

Appendix 4.08a-c

Appendix S.03a

BLUMEL HALL REMODEL - PROJECT SCHEDULE - MAIN BUILDING - WINTER TERM FINISH

Wed 4/18/12

ID	Task Name	Duration	Start	Finish	Predecessor	Calendar
1	PROJECT PLANNING	88 days	Fri 5/13/11	Tue 9/13/11		11/27
8	REQUESTS FOR PROPOSALS AND SELECTION	51 days	Wed 10/12/11	Wed 12/21/11		3/4
19	DESIGN	110 days	Wed 11/23/11	Tue 4/24/12		6/10
20	Schematic Design	40 days	Wed 11/23/11	Tue 1/17/12	18FS-21 days	
21	Construction Documents	70 days	Wed 1/18/12	Tue 4/24/12	20 days	
22	Issue Roof Design for Bid.	0 days	Fri 3/9/12	Fri 3/9/12	20FS+3 days	
23	Submit for Permit/ Bid	10 days	Wed 4/25/12	Tue 5/8/12	21, 22 days	
24	Contractor Bid	20 days	Wed 5/9/12	Tue 6/5/12	23 days	
25	Award Bid	10 days	Wed 6/6/12	Tue 6/19/12	24 days	
26	Issue Contract	20 days	Wed 6/20/12	Tue 7/17/12	25 days	
27	City of Portland Permitting	37 days	Wed 5/9/12	Thu 6/28/12	23 days	
28	CONSTRUCTION	169 days	Wed 7/18/12	Mon 3/11/13		
29	PSUJ AUX to Clear 9th Floor of Blumel Hall	5 days	Wed 7/18/12	Tue 7/24/12	26FS-5 days	
30	Phase 0 - Roof Replacement and Roof Work	75 days	Wed 7/25/12	Tue 11/6/12	27, 26, 21 days	
31	Setup, erect stairs, visqueen over windows, etc	5 days	Wed 7/25/12	Tue 7/31/12		
32	Demo, Reroof, Curbs, Guardrail Support, Roof Anchors, Stair Base, and Flash	55 days	Wed 8/1/12	Tue 10/16/12	31 days	
33	Abate Roof	2 days	Wed 8/8/12	Thu 8/9/12	32SS+5 days	
34	AT&T to install base steel (intermittent, short periods)	40 days	Fri 8/10/12	Thu 10/4/12	32SS+7 days	
35	Special Inspections (Intermittent)	50 days	Wed 8/8/12	Tue 10/16/12	32SS+5 days	
36	Install New Rooftop HVAC Units	15 days	Wed 10/17/12	Tue 11/6/12	32 days	
37	AT&T to install new structures.	15 days	Wed 10/17/12	Tue 11/6/12	32 days	
38	Final flashing for boiler flue	2 days	Fri 10/12/12	Mon 10/15/12	46FF-1C days	
39	Roof Complete	0 days	Tue 11/6/12	Tue 11/6/12	36, 37, 31 days	
40	Phase I - Construct infrastructure upgrades and remodel in entire building	169 days	Wed 7/18/12	Mon 3/11/13	26 days	
41	Replace water piping.	70 days	Tue 9/4/12	Mon 12/10/12		
42	2nd floor	15 days	Tue 9/4/12	Mon 9/24/12	29FS+1 days	
43	8th floor lateral piping replacement	25 days	Tue 9/4/12	Mon 10/8/12	29FS+2 days	
44	Risers	55 days	Tue 9/25/12	Mon 12/10/12	42 days	
45	Fire alarm panel replacement	20 days	Tue 9/4/12	Mon 10/1/12		
46	Boiler replacement	40 days	Tue 9/4/12	Mon 10/29/12		
47	Complete infrastructure upgrades	0 days	Mon 12/10/12	Mon 12/10/12	44, 46 days	
48	Commission infrastructure upgrades	25 days	Tue 12/11/12	Mon 1/14/13	30, 44, 41 days	
49	Room and corridor remodels for entire building	169 days	Wed 7/18/12	Mon 3/11/13		
50	Rm 301 - Create mock up for remodeled unit	50 days	Wed 7/18/12	Tue 9/25/12	26 days	
51	Demo	90 days	Tue 9/4/12	Mon 1/7/13		
52	MEP Rough In	90 days	Tue 9/11/12	Mon 1/14/13	51SS+5 days	
53	Install Cabinets	90 days	Tue 10/23/12	Mon 2/25/13	52SS+3 days, 50 days	
54	MEP Trim	90 days	Tue 10/30/12	Mon 3/4/13	53SS+5 days	
55	Architectural Finishes	90 days	Tue 11/6/12	Mon 3/11/13	54SS+5 days	
56	Room and Corridor Completion Inspections	70 days	Tue 12/4/12	Mon 3/11/13	54SS+2 days, 50 days	
57	1st floor Lounge/ Lobby Remodels	95 days	Tue 9/4/12	Mon 1/14/13		
58	Demo	40 days	Tue 9/4/12	Mon 10/29/12		
59	MEP Rough In	40 days	Tue 9/11/12	Mon 11/5/12	58SS+5 days	
60	Install Cabinets	40 days	Tue 10/23/12	Mon 12/17/12	59SS+3 days	
61	MEP Trim	40 days	Tue 10/30/12	Mon 12/24/12	60SS+5 days	
62	Architectural Finishes	40 days	Tue 11/13/12	Mon 1/7/13	61SS+1 days	
63	Complete 3rd and 4th floors	0 days	Mon 1/7/13	Mon 1/7/13	62 days	
64	Lounge and Lobby Completion Inspections	5 days	Tue 1/8/13	Mon 1/14/13	63 days	

Project: BH Schedule 01-12-12
Date: Wed 4/18/12

Task: [Pattern] Milestone: [Diamond] External Task: [Pattern] Critical Path: [Pattern]

Split: [Dotted Line] Summary: [Thick Arrow] External Milestone: [Diamond]

Progress: [Solid Arrow] Project Summary: [Thick Arrow] Deadline: [Arrow]

BLUMEL HALL REMODEL - PROJECT SCHEDULE - MAIN BUILDING - FALL TERM FINISH

Wed 4/18/12

ID	Task Name	Duration	Start	Finish	Predecessor	11/27	3/4	May 1, '12	6/10	9/16	Nov 21, '12	12/23	3/31	Jun
----	-----------	----------	-------	--------	-------------	-------	-----	------------	------	------	-------------	-------	------	-----



ID	Task Name	Duration	Start	Finish	Predecessor
1	PROJECT PLANNING	88 days	Fri 5/3/11	Tue 9/13/11	
8	REQUESTS FOR PROPOSALS AND SELECTION	51 days	Wed 10/12/11	Wed 12/21/11	
19	DESIGN	110 days	Wed 11/23/11	Tue 4/24/12	
20	Schematic Design	40 days	Wed 11/23/11	Tue 1/17/12	18FS-21 days
21	Construction Documents	70 days	Wed 1/18/12	Tue 4/24/12	20
22	Issue Roof Design for Bid.	0 days	Fri 3/9/12	Fri 3/9/12	20FS+3 days
23	Submit for Permit/ Bid	10 days	Wed 4/25/12	Tue 5/8/12	21, 22
24	Contractor Bid	20 days	Wed 5/9/12	Tue 6/5/12	23
25	Award Bid	10 days	Wed 6/6/12	Tue 6/19/12	24
26	Issue Contract	20 days	Wed 6/20/12	Tue 7/17/12	25
27	City of Portland Permitting	37 days	Wed 5/9/12	Thu 6/28/12	23
28	CONSTRUCTION	124 days	Wed 7/18/12	Mon 1/7/13	
29	PSU/ AUX to Clear 9th Floor of Blumel Hall	5 days	Wed 7/18/12	Tue 7/24/12	28FS-5 days
30	Phase 0 - Roof Replacement and Roof Work	75 days	Wed 7/25/12	Tue 11/6/12	27, 26, 21
31	Setup, erect stairs, visqueen over windows, etc	5 days	Wed 7/25/12	Tue 7/31/12	
32	Demo, Reroof, Curbs, Guardrail Support, Roof Anchors, Stair Base, and Flash	55 days	Wed 8/1/12	Tue 10/16/12	31
33	Abate Roof	2 days	Wed 8/8/12	Thu 8/9/12	32SS+5 days
34	AT&T to install base steel (intermittent, short periods)	40 days	Fri 8/10/12	Thu 10/4/12	32SS+7 days
35	Special Inspections (Intermittent)	50 days	Wed 8/8/12	Tue 10/16/12	32SS+5 days
36	Install New Rooftop HVAC Units	15 days	Wed 10/17/12	Tue 11/6/12	32
37	AT&T to install new structures.	15 days	Wed 10/17/12	Tue 11/6/12	32
38	Final flashing for boiler flue	2 days	Fri 10/12/12	Mon 10/15/12	46FF-1C days
39	Roof Complete	0 days	Tue 11/6/12	Tue 11/6/12	38, 36, 31
40	Phase I - Construct infrastructure upgrades and remodel in entire building	124 days	Wed 7/18/12	Mon 1/7/13	26
41	Replace water piping.	65 days	Tue 9/4/12	Mon 12/3/12	
42	2nd floor	15 days	Tue 9/4/12	Mon 9/24/12	29FS+1 days
43	8th floor lateral piping replacement	25 days	Tue 9/4/12	Mon 10/8/12	29FS+2 days
44	Risers	50 days	Tue 9/25/12	Mon 12/3/12	42
45	Fire alarm panel replacement	20 days	Tue 9/4/12	Mon 10/1/12	
46	Boiler replacement	40 days	Tue 9/4/12	Mon 10/29/12	
47	Complete infrastructure upgrades	0 days	Mon 12/3/12	Mon 12/3/12	44, 46
48	PSU to commission infrastructure upgrades	25 days	Tue 12/4/12	Mon 1/7/13	30, 44, 46
49	Room and corridor remodels for entire building	104 days	Wed 7/18/12	Mon 12/10/12	
50	Rm 301 - Create mock up for remodeled unit	43 days	Wed 7/18/12	Fri 9/14/12	26
51	Mockup Approved	0 days	Fri 9/14/12	Fri 9/14/12	50
52	Demo	45 days	Tue 9/4/12	Mon 11/5/12	
53	MEP Rough In	45 days	Tue 9/11/12	Mon 11/12/12	52SS+5 days
54	Install Cabinets	45 days	Tue 9/18/12	Mon 11/19/12	53SS+5 days, 51
55	MEP Trim	45 days	Tue 9/25/12	Mon 11/26/12	54SS+5 days
56	Architectural Finishes	45 days	Tue 10/2/12	Mon 12/3/12	55SS+5 days
57	Room and Corridor Completion Inspections	45 days	Tue 10/9/12	Mon 12/10/12	50, 56SS days
58	Room and Corridor Remodel Completed	0 days	Mon 12/10/12	Mon 12/10/12	57
59	1st floor Lounge/ Lobby Remodels	55 days	Tue 9/4/12	Mon 11/19/12	
60	Demo	25 days	Tue 9/4/12	Mon 10/8/12	
61	MEP Rough In	25 days	Tue 9/11/12	Mon 10/15/12	60SS+5 days
62	Install Cabinets	25 days	Tue 9/18/12	Mon 10/22/12	61SS+5 days
63	MEP Trim	25 days	Tue 9/25/12	Mon 10/29/12	62SS+5 days
64	Architectural Finishes	25 days	Tue 10/9/12	Mon 11/12/12	63SS+1 days
65	Lounge and Lobby Completion Inspections	5 days	Tue 11/13/12	Mon 11/19/12	64
66	1st Floor Lounge and Lobby Complete	0 days	Mon 11/19/12	Mon 11/19/12	65

Project: BH Schedule 01-12-12
Date: Wed 4/18/12

Page 1

Task **Milestone** **External Tasks** **Critical Path**

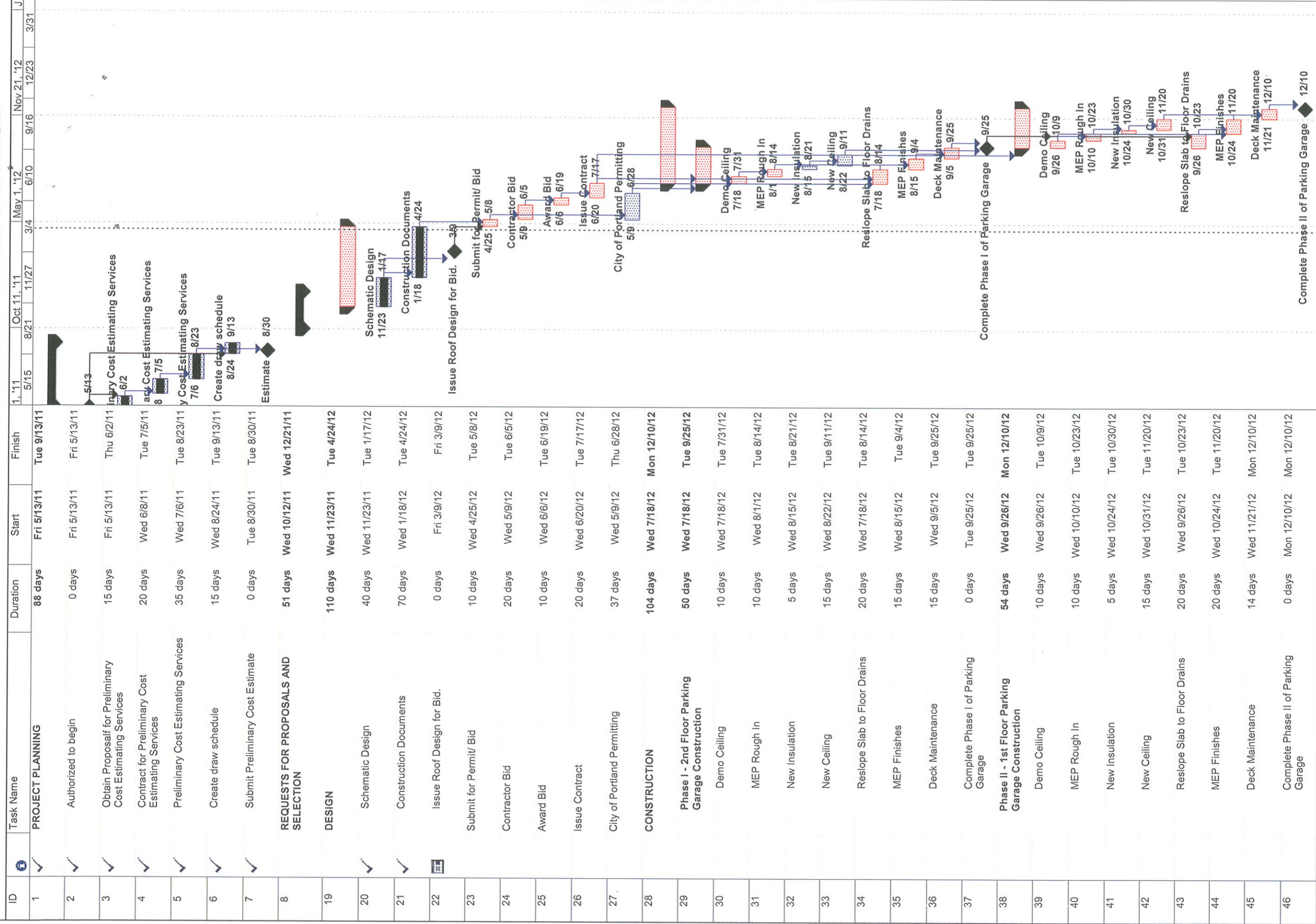
Split **Summary** **External Milestone** **Deadline**

Progress **Project Summary**

Appendix S.03C

BLUMEL HALL REMODEL - PROJECT SCHEDULE - PARKING GARAGE

Wed 4/18/12



Project: BH Schedule 01-12-12
Date: Wed 4/18/12

Task: [Task Icon] Summary: [Summary Icon] Milestone: [Milestone Icon]

Split: [Split Icon] Project Summary: [Project Summary Icon] External Tasks: [External Tasks Icon]

Progress: [Progress Icon] External Milestone: [External Milestone Icon]

Deadline: [Deadline Icon] Critical Path: [Critical Path Icon]

Page 1