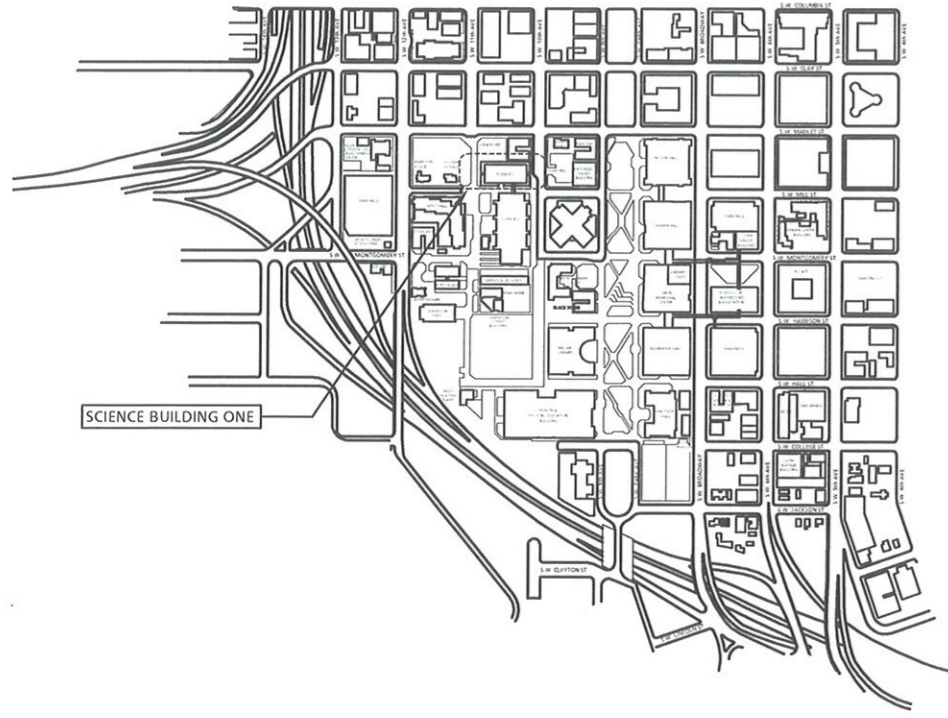
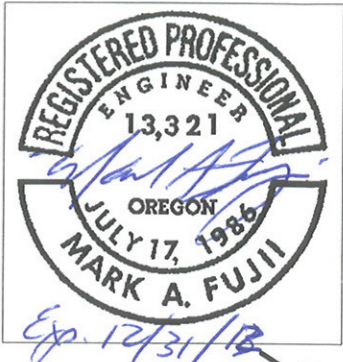
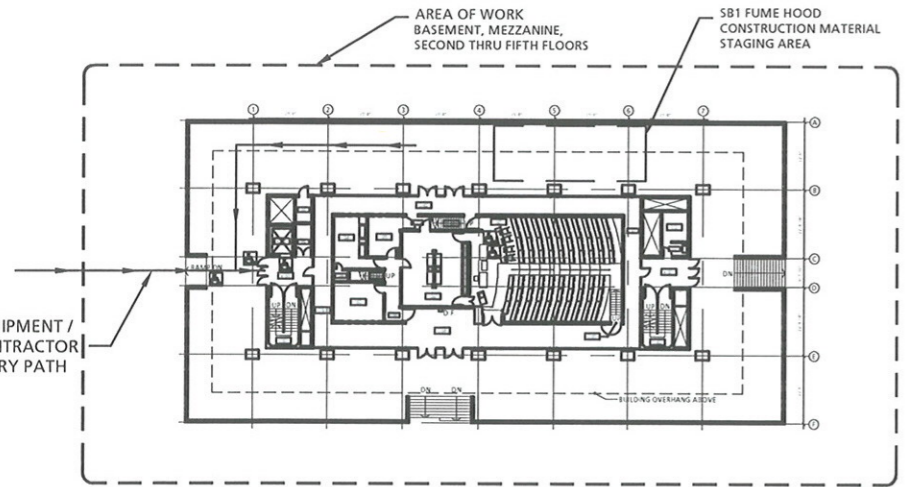


PSU - Science Building One

2011 SB1 EDA - Fume Hood Replacement



VICINITY MAP



FLOOR PLAN

SCALE: 1/32" = 1'-0"



LEGAL DESCRIPTION

PORTLAND ADDITION,
BLOCK 242 TAX LOT R667726740, R667726760, R667726780
1025 SW MILL STREET
PORTLAND, OREGON 97201

CODE INFORMATION

OCCUPANCY TYPE A3
BUILDING CONSTRUCTION TYPE - EXISTING

MECHANICAL SYMBOLS

- GENERAL EXHAUST AIR
- FUME EXHAUST / LAB EXHAUST AIR
- DEMOLISH EXISTING
- EXISTING COLD DUCT SUPPLY AIR (CSA)
- EXISTING HOT DUCT SUPPLY AIR (HSA)
- EXISTING / NEW
- CONNECT TO EXISTING / NEW

DRAWING INDEX

- M0.1 COVER SHEET, LEGENDS, ABBREVIATIONS, SCHEDULES AND NOTES
- M0.2 LEGENDS, ABBREVIATIONS, SCHEDULES AND NOTES
- M0.3 GENERAL NOTES, GENERAL CONDITIONS, AND SPECIFICATIONS
- M0.4 SCHEDULES
- M2.0 FIRST FLOOR MEZZANINE PLAN - MECHANICAL
- M2.1 SECOND FLOOR PLAN - MECHANICAL
- M2.2 THIRD FLOOR PLAN - MECHANICAL
- M2.3 THIRD FLOOR PLAN - MECHANICAL - CONTINUED
- M2.4 FOURTH FLOOR PLAN - MECHANICAL
- M2.5 FIFTH FLOOR PLAN - MECHANICAL

ABBREVIATIONS

AF	AIRFOIL	ID	INSIDE(DIAMETER/DIMENSION)
AFF	ABOVE FINISHED FLOOR	IE	INVERT ELEVATION
AHP	APPARATUS HOUSING PLENUM	IN	INCH(ES)
ALT	ALTERNATIVE	INSUL	INSULATION
AL	ALUMINUM	ISOL	ISOLAT(OR)(ION)
APD	AIR PRESSURE DROP	KW	KILOWATT
APPROX	APPROXIMATELY	KWH	KILOWATT HOUR
ARCH	ARCHITECT(URAL)	L	LENGTH
AUTO	AUTOMATIC	LAT	LEAVING AIR TEMP
BDD	BACKDRAFT DAMPER	LB	POUND
BI	BACKWARD INCLINED	LDB	LEAVING DRY BULB
BLDG	BUILDING	LEA	LABORATORY EXHAUST AIR
BSMT	BASEMENT	LF	LINEAR FEET
BTU	BRITISH THERMAL UNIT	LFT	LEAVING FLUID TEMPERATURE
BTUH	BRITISH THERMAL UNITS PER HOUR	LVG	LEAVING
CFH	CUBIC FEET PER HOUR	LWB	LEAVING WET BULB
CFM	CUBIC FEET PER MINUTE	LWT	LEAVING WATER TEMPERATURE
CFS	CUBIC FEET PER SECOND	MAX	MAXIMUM
CLG	CEILING OR COOLING	MBH	THOUSAND BTU PER HOUR
CONC	CONCRETE	MECH	MECHANICAL
CONN	CONNECT(ION)	MFR	MANUFACTURER
CONT	CONTINUE(ED)(UATION)	MIN	MINIMUM
CL	CENTERLINE	MISC	MISCELLANEOUS
CSA	COLD SUPPLY AIR	MOD	MOTOR OPERATED DAMPER
DDC	DIRECT DIGITAL CONTROL	MTD	MOUNTED
DEFL	DEFLECTION	NC	NORMALLY CLOSED
DN	DOWN	NIC	NOT IN CONTRACT
DP	DEW POINT	NO	NORMALLY OPEN
DWDI	DOUBLE WIDTH DOUBLE INLET	OAD	OUTSIDE AIR DAMPER
DWG	DRAWING	OC	ON CENTER DISTANCE
EA	EXHAUST AIR	OSA	OUTSIDE AIR
EAD	EXHAUST AIR DAMPER	PH	PHASE
EAT	ENTERING AIR TEMPERATURE	PP	POLYPROPYLENE
EDB	ENTERING DRY BULB	PSI	POUNDS PER SQUARE INCH
EFF	EFFICIENCY	PVC	POLYVINYL CHLORIDE
EFT	ENTERING FLUID TEMPERATURE	PVS	PVC COATED STEEL
ELEC	ELECTRIC(AL)	R (RAD)	RADIUS
ELEV	ELEVATION	RA	RETURN AIR
ENGR	ENGINEER	RAD	RETURN AIR DAMPER
EQ	EQUAL	REV	REVISION
EQUIP	EQUIPMENT	RH	RELATIVE HUMIDITY
ESP	EXTERNAL STATIC PRESSURE	RPM	REVOLUTIONS PER MINUTE
EWB	ENTERING WET BULB	SA	SUPPLY AIR
EWT	ENTERING WATER TEMPERATURE	SCFM	STANDARD CUBIC FEET PER MINUTE
EX	EXTRACTOR	SD	SMOKE DAMPER
EXH	EXHAUST	SECT	SECTION
EXIST(E)	EXISTING	SENS	SENSIBLE
EXP	EXPANSION	SIM	SIMILAR
F	DEGREES FAHRENHEIT	SP	STATIC PRESSURE
FC	FORWARD CURVED	SPEC	SPECIFICATION
FE	FUME EXHAUST	SQ	SQUARE
FIG	FIGURE	SF	SQUARE FOOT(FEET)
FILT	FILTER	SQ IN	SQUARE INCH(ES)
FLEX	FLEXIBLE	SS	STAINLESS STEEL
FPD	FLUID PRESSURE DROP	STL	STEEL
FPM	FEET PER MINUTE	STRUCT	STRUCTURE(E)(AL)
FPS	FEET PER SECOND	SWP	SINGLE WALL PLENUM
FT	FEET/FOOT	SWSI	SINGLE WIDTH SINGLE INLET
FU	FIXTURE UNIT	TA	TRANSFER AIR
FUT	FUTURE	TBD	TO BE DETERMINED
FV	FACE VELOCITY	TEMP	TEMPERATURE
GA	GAGE/GAUGE	THRU	THROUGH
GAL	GALLON	TSP	TOTAL STATIC PRESSURE
GALV	GALVANIZED	TYP	TYPICAL
GE	GENERAL EXHAUST	UPS	UNINTERRUPTED POWER SUPPLY
GLY	GLYCOL	V	VOLTS
GPH	GALLONS PER HOUR	VD	VOLUME DAMPER
GPM	GALLONS PER MINUTE	VEL	VELOCITY
H	HEIGHT	VERT	VENT(OR)ROUGH ROOF
HORIZ	HORIZONTAL	VTR	
HP	HORSEPOWER	W	WIDTH
HTG	HEATING	WG	WATER GAGE DROP
HSA	HOT SUPPLY AIR	WPD	
		W	WITH
		W/O	WITHOUT

2011 SB1 EDA - FUME-HOOD-REPLACEMENT

242, SCIENCE BUILDING 1 (ONE), 1025 S.W. MILL, Portland, Oregon 97201
PORTLAND STATE UNIVERSITY
PORTLAND STATE UNIVERSITY, FACILITIES DEPT., 617 SW MONTGOMERY STREET, Ph: (503)725-3738, Fax: (503)725-4429

JOB NO.:	SB112C01
DRAWN:	IQ
CHECKED:	MF
DATE:	12/21/2011
ISSUED FOR	
BID / PERMIT:	3/21/2012

REVISIONS	
#	DATE-BY/DESCRIP.
△	
△	
△	
△	
△	

SHEET TITLE
PLANS, SECTIONS,
ELEVATIONS, DETAILS,
NOTES, SCHEDULES

BID/PERMIT SET

M0.1

FUME HOOD SCHEDULE

TAG NO.	BUILDING	LAB SERVED	MANUFACTURER	MODEL (NOTE 4, 9, 10, 11, 12)	SIZE		MAX FACE VELOCITY (FPM)	MAX EXHAUST AIR VOLUME 28" SASH (CFM)	EXHAUST AIR VOLUME 18" SASH (CFM)	MIN EXHAUST AIR VOLUME (CLOSED) (CFM)	SERVICE FIXTURE (NOTE 3, 8)					ELEC OUTLETS GFCI (QT'Y)	WEIGHT (LB)	ELEC REQ'TS (NOTE 3)		REMARKS	
					LENGTH (IN)	DEPTH (IN)					COLD WATER (NOTE 5) (QT'Y)	HOT WATER (NOTE 6) (QT'Y)	GAS (QT'Y)	AIR (QT'Y)	PASS THRU OUTLET (QT'Y)			CUP SINK (NOTE 7) (QT'Y)	(V/PH)		BREAKER SIZE (AMPS)
SB1-FH-204A	SCIENCE BUILDING 1	204	LABCONCO	XSTREAM	72	39.2	60	710	450	310	2	-	-	2	2	2	4	475	115/1PH	20	
SB1-FH-204B	SCIENCE BUILDING 1	204	LABCONCO	XSTREAM	72	39.2	60	710	450	310	2	-	-	2	2	2	4	475	115/1PH	20	
SB1-FH-204C	SCIENCE BUILDING 1	204	LABCONCO	XSTREAM	96	39.2	60	1000	640	420	2	-	-	2	2	2	4	610	115/1PH	20	
SB1-FH-309D	SCIENCE BUILDING 1	309	LABCONCO	XSTREAM	96	39.2	60	1000	640	420	4	-	-	2	2	2	4	610	115/1PH	20	
SB1-FH-323C	SCIENCE BUILDING 1	323	LABCONCO	XSTREAM	72	39.2	60	710	450	310	4	-	-	2	2	2	4	475	115/1PH	20	
SB1-FH-504A	SCIENCE BUILDING 1	504	LABCONCO	XSTREAM	72	39.2	60	710	450	450	2	-	-	2	2	2	4	475	115/1PH	20	ABI #1 - SEE NOTE 2
SB1-FH-540A	SCIENCE BUILDING 1	540A	LABCONCO	XSTREAM	48	39.2	60	440	280	280	2	-	-	2	2	2	4	355	115/1PH	20	ABI #2 - SEE NOTE 2

- NOTES:
- NOT USED
 - BID ALTERNATE. PROVIDE SEPARATE ITEMIZED COST FOR REVIEW AND EVALUATION. SEE DRAWINGS FOR BID ALTERNATE NUMBER.
 - SINGLE POINT UTILITY AND ELECTRICAL CONNECTION.
 - PROVIDE NEW SPILL STOPPER WORK SURFACE. NEW WORK SURFACE TO BE FLUSH WITH EXISTING COUNTERTOP SURFACE. FIELD VERIFY EXACT HEIGHT.
 - PROVIDE COLD WATER GOOSENECK FAUCET KIT WITH GREEN EPOXY-COATED BRASS RIGID / SWIVEL GOOSENECK AND ELEVATED VACUUM BREAKER. CHICAGO FAUCET AND VALVE ONLY.
 - PROVIDE HOT / COLD WATER MIXING GOOSENECK FAUCET WITH WHITE EPOXY-COATED BRASS RIGID/ SWIVEL GOOSENECK ELEVATED VACUUM BREAKER. CHICAGO FAUCET AND VALVE ONLY.
 - PROVIDE 1.5" LABORATORY WASTE CONNECTION FOR CUP SINK WITH TRAP. CONNECT LAB WASTE AND VENT TO EXISTING SYSTEM. FIELD VERIFY EXACT PIPING AND CUP SINK LOCATION.
 - SINGLE POINT PLUMBING CONNECTION TO COLD WATER, HOT WATER AND GAS.
 - PROVIDE FRONT CEILING ENCLOSURE SUITABLE FOR 9 FEET CEILING HEIGHT. SEE M2.X DRAWING FOR SIDE PANEL NOTE. FIELD VERIFY EXACT ENCLOSURE HEIGHT. PROVIDE SEISMIC ANCHOR TO HOOD AND CABINET.
 - PROVIDE SASH STOP KITS AS PART OF THE HOOD. SET SASH STOP AT 18" HEIGHT.
 - PROVIDE MATCHING SOLVENT STORAGE CABINET WITH VENT KIT AS PART OF THE PACKAGE.
 - FUME HOOD SHALL BE ABLE TO FIT THROUGH A 34" CLEAR DOOR TO THE LAB SPACE AND 78"x41" ELEVATOR CART CLEARANCE EXCEPT AS NOTED ON PLAN AND FIELD VERIFY EXACT TRAVEL PATH.

DUAL DUCT VAV TERMINAL UNIT SCHEDULE

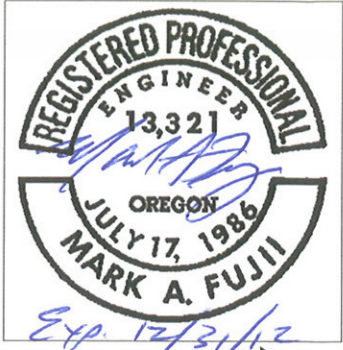
TAG NO.	BUILDING	LAB SERVED	MANUFACTURER MODEL	HOT INLET SIZE (IN)	COLD INLET SIZE (IN)	OCCUPIED PERIOD				UNOCCUPIED PERIOD SUPPLY VOLUME (CFM)	REMARKS
						COLD DUCT		HOT DUCT			
						MAX SUPPLY VOLUME (CFM)	MIN SUPPLY VOLUME (CFM)	MAX SUPPLY VOLUME (CFM)	MIN SUPPLY VOLUME (CFM)		
SB1-DD-504	SCIENCE BUILDING 1	504	SIEMENS / APOGEE	8	8	600	200	520	160	250	ABI#1 - SEE NOTE 1
SB1-DD-540A	SCIENCE BUILDING 1	540A	SIEMENS / APOGEE	8	8	450	130	370	340	170	ABI#2 - SEE NOTE 1
SB1-DD-204	SCIENCE BUILDING 1	204	SIEMENS / APOGEE	10	10	1140	640	1000	640	940	

- NOTES:
- BID ALTERNATE. PROVIDE SEPARATE ITEMIZED COST FOR REVIEW AND EVALUATION. COORDINATE WITH OWNER / FACILITY PRIOR TO START WORK. SEE DRAWINGS FOR BID ALTERNATE NUMBER.

FUME HOOD EXHAUST TERMINAL UNIT SCHEDULE

TAG NO.	BUILDING	LAB SERVED	MANUFACTURER MODEL	EXHAUST CONNECT SIZE (IN)	MAX EXHAUST VOLUME (CFM)	MIN EXHAUST VOLUME (CFM)	REMARKS
SB1-FVV-204A	SCIENCE BUILDING 1	204	SIEMENS / APOGEE	9	710	310	SEE NOTE 2
SB1-FVV-204B	SCIENCE BUILDING 1	204	SIEMENS / APOGEE	9	710	310	SEE NOTE 2
SB1-FVV-204C	SCIENCE BUILDING 1	204	SIEMENS / APOGEE	10	1000	420	
SB1-FVV-309D	SCIENCE BUILDING 1	309D	SIEMENS / APOGEE	10	1000	420	
SB1-FVV-323C	SCIENCE BUILDING 1	323	SIEMENS / APOGEE	9	710	310	SEE NOTE 2
SB1-FVV-504	SCIENCE BUILDING 1	504	SIEMENS / APOGEE	9	710	310	ABI #1 - SEE NOTE 1 & 2
SB1-FVV-540A	SCIENCE BUILDING 1	540A	SIEMENS / APOGEE	7	440	190	SEE NOTE 2

- NOTES:
- BID ALTERNATE. PROVIDE SEPARATE ITEMIZED COST FOR REVIEW AND EVALUATION. COORDINATE WITH OWNER / FACILITY PRIOR TO START WORK. SEE DRAWINGS FOR BID ALTERNATE NUMBER.
 - FUME HOOD EXHAUST OPENING IS 12". PROVIDE TRANSITION FITTING AT EXHAUST CONNECTION. COORDINATE WITH SIEMENS CONTROLS FOR FINAL EXHAUST TERMINAL UNIT SIZE.



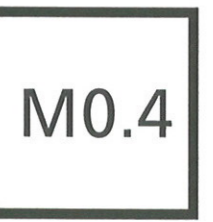
2011 SB1 EDA - FUME-HOOD-REPLACEMENT
 242, SCIENCE BUILDING 1 (ONE), 1025 S.W. MILL, Portland, Oregon 97201
PORTLAND STATE UNIVERSITY
 PORTLAND STATE UNIVERSITY, FACILITIES DEPT., 617 SW MONTGOMERY STREET, Ph: (503)725-3738, Fax: (503)725-4329

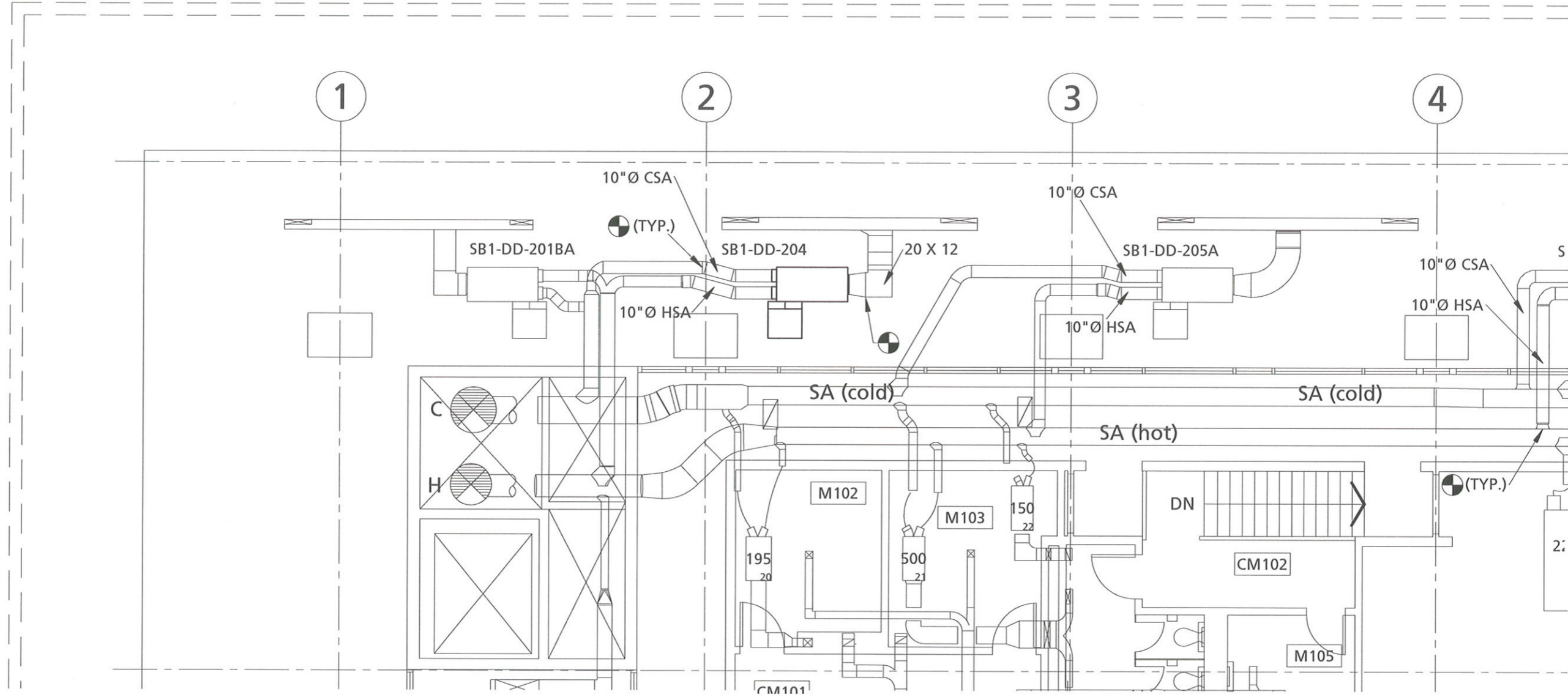
JOB NO.: SB112C01
 DRAWN: IQ
 CHECKED: MF
 DATE: 12/21/2011
 ISSUED FOR
 BID / PERMIT: 3/21/2012

REVISIONS
#-DATE-BY/DESCR.

SHEET TITLE
SCHEDULES

BID/PERMIT SET





FIRST FLOOR MEZZANINE PLAN - MECHANICAL

Scale: 1/4" = 1'-0"

GENERAL NOTES

- A** SEE M0.1 TO M0.5 FOR LEGENDS, ABBREVIATIONS, GENERAL CONDITIONS, SPECIFICATIONS AND MECHANICAL GENERAL NOTES.
- B** RETAIN ABATEMENT CONTRACTOR FOR ITEMS DEMOLISHED THAT CONTAIN ASBESTOS. TYP OF ALL.

2011 SB1 EDA - FUME-HOOD-REPLACEMENT
 242, SCIENCE BUILDING 1 (ONE), 1025 S.W. MILL, Portland, Oregon 97201
PORTLAND STATE UNIVERSITY
 PORTLAND STATE UNIVERSITY, FACILITIES DEPT., 617 SW MONTGOMERY STREET, Ph. (503)725-3738, Fax (503)725-4325

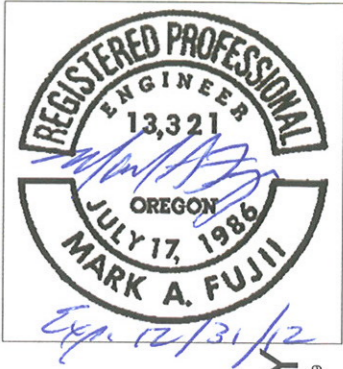
JOB NO.:	SB112C01
DRAWN:	IQ
CHECKED:	MF
DATE:	12/21/2011
ISSUED FOR	
BID / PERMIT:	3/21/2012

REVISIONS	
#	DATE-BY/DESCR.

SHEET TITLE

BID/PERMIT SET

M2.0



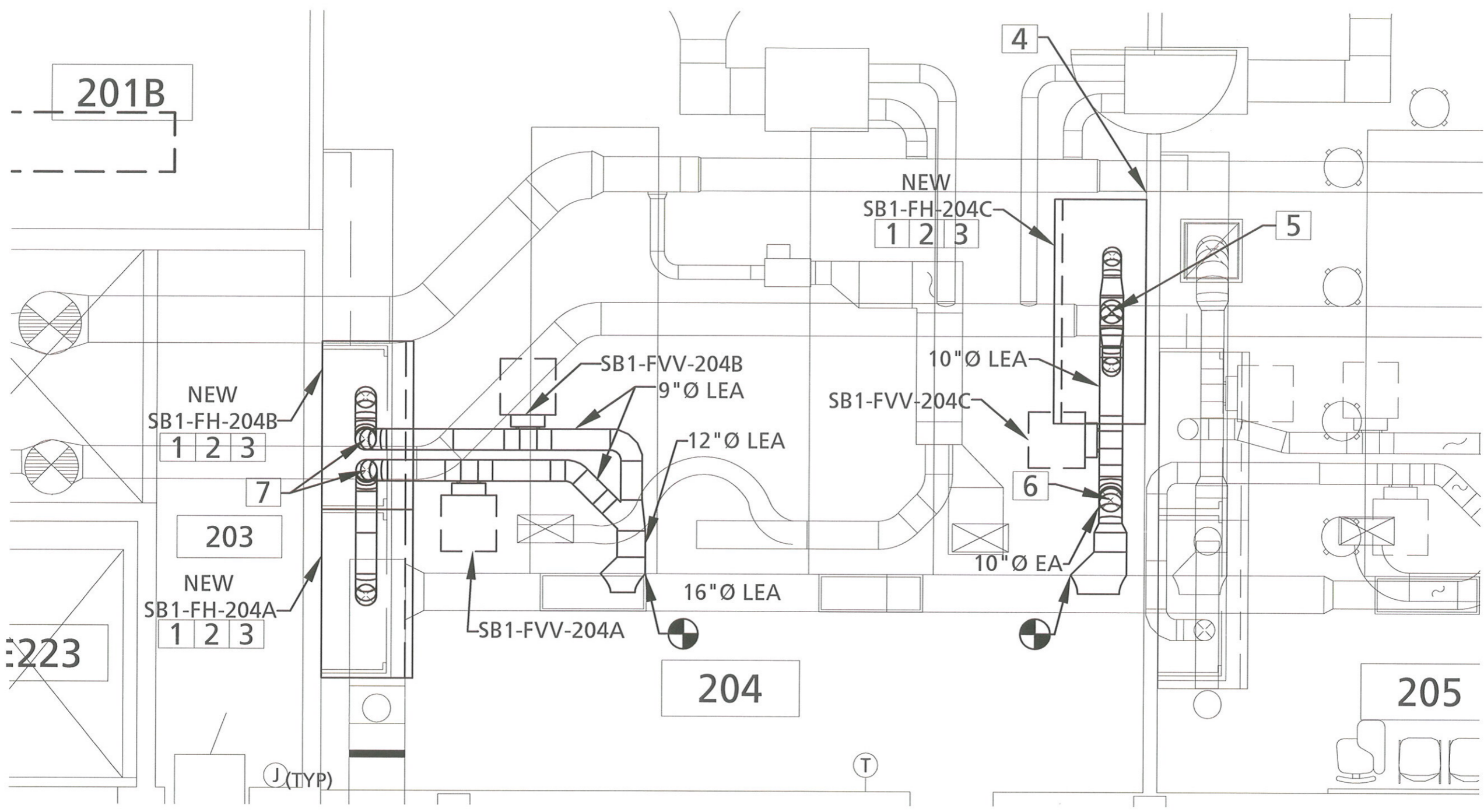
2011 SB1 EDA - FUME HOOD-REPLACEMENT

242, SCIENCE BUILDING 1 (ONE), 1025 S.W. MILL, Portland, Oregon 97201
PORTLAND STATE UNIVERSITY
 PORTLAND STATE UNIVERSITY, FACILITIES DEPT., 617 SW MONTGOMERY STREET, Ph. (503)725-3738, Fax. (503)725-4829

JOB NO.: SB112C01
 DRAWN: IQ
 CHECKED: MF
 DATE: 12/21/2011
 ISSUED FOR
 BID / PERMIT: 3/21/2012

REVISIONS	
#	DATE-BY/DESCRP.
△	
△	
△	
△	

SHEET TITLE
 BID/PERMIT SET



SECOND FLOOR PLAN - MECHANICAL
 1" = 1'0"
 0 1' 2'

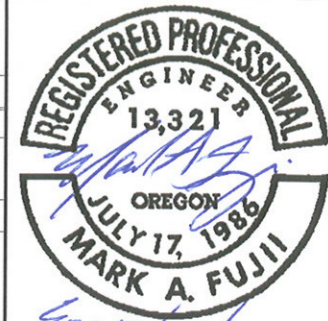
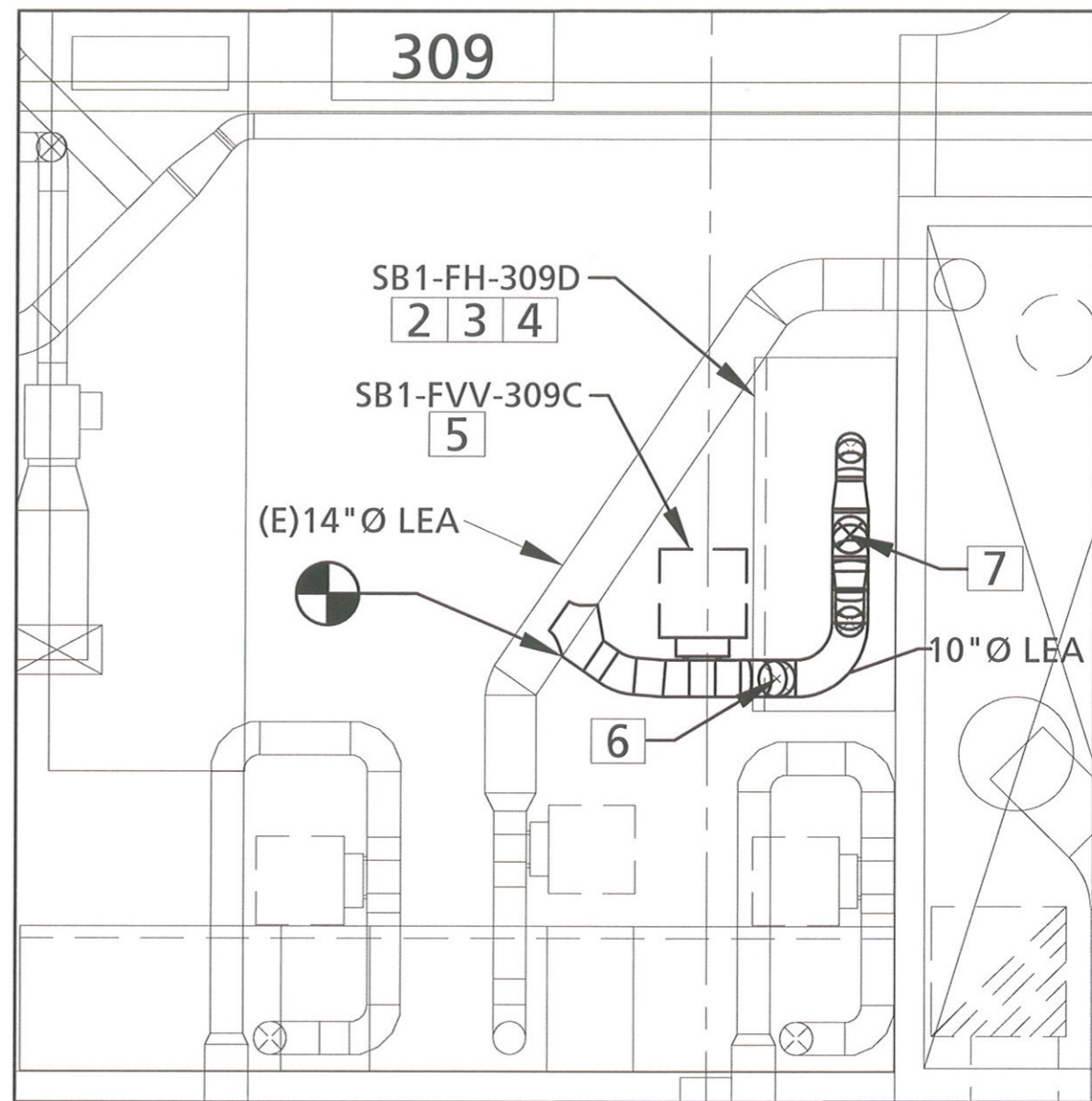
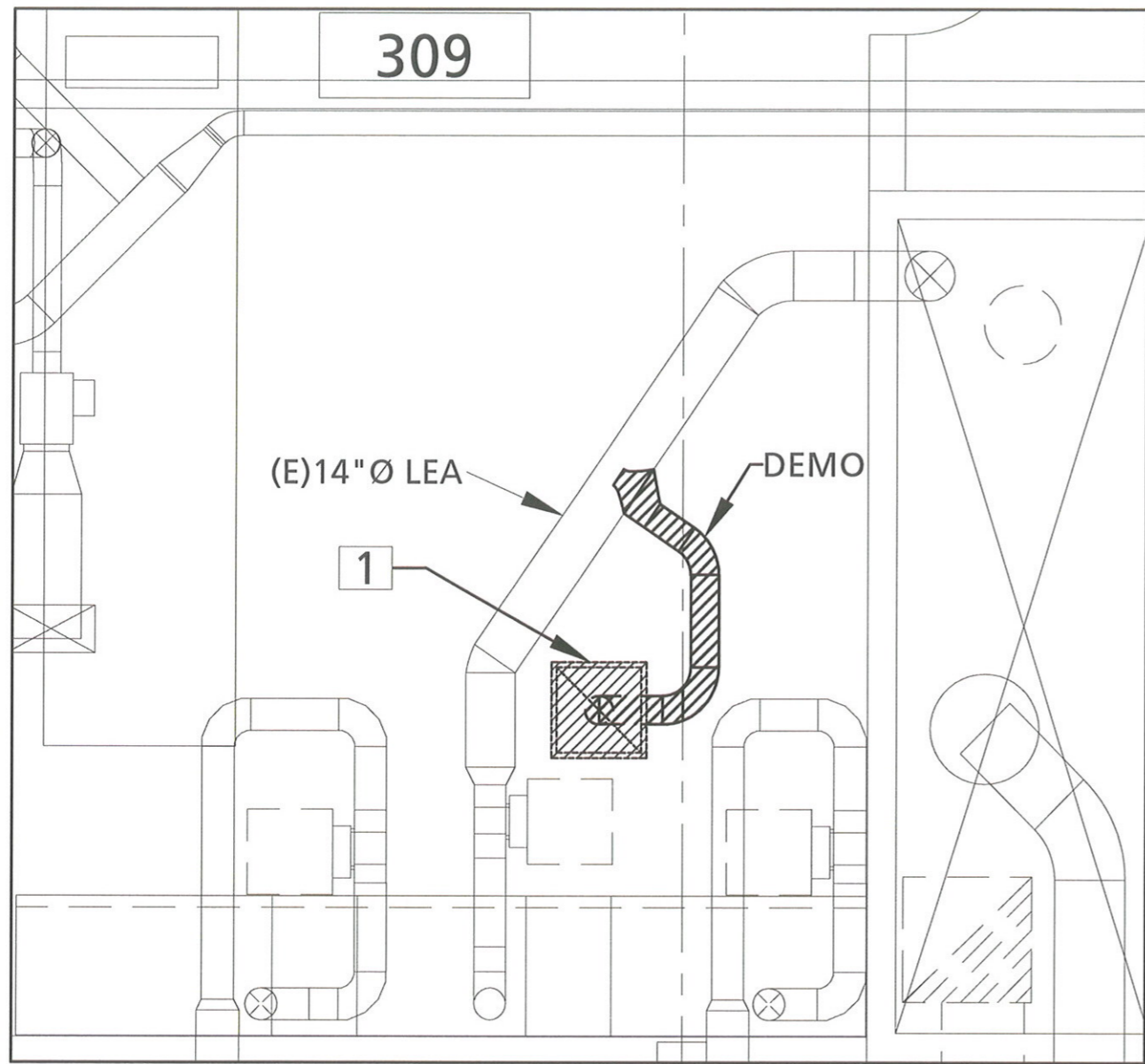
- GENERAL NOTES**
- [A] SEE M0.1 TO M0.5 FOR LEGENDS, ABBREVIATIONS, GENERAL CONDITIONS, SPECIFICATIONS AND MECHANICAL GENERAL NOTES.
 - [B] RETAIN ABATEMENT CONTRACTOR FOR ITEMS DEMOLISHED THAT CONTAIN ASBESTOS. TYP OF ALL.

- KEYED NOTES**
- [1] EXTEND COLD WATER, AIR, WASTE, GAS, AND ELECTRICAL FROM EXISTING CAP TO NEW FUME HOOD. FIELD VERIFY EXACT CONNECTION LOCATIONS.
 - [2] PROVIDE PANEL TO ENCLOSE SPACE ABOVE FUME HOOD. PRIME AND PAINT PANEL TO MATCH FUME HOOD. FIELD VERIFY EXACT PANEL LOCATION AND SIZE.
 - [3] FURNISH AND INSTALL NEW FUME HOOD WITH BASE CABINETS.
 - [4] RELOCATE EXIST. ELECTRICAL RECEPTACLE IF REQ'D.
 - [5] 10" DUCT DROPS BELOW CEILING IN FUME HOOD SHROUD, THEN SPLITS TO 8" DUCTS TO TERMINATION POINTS.
 - [6] DUCTS DROPS TO PASS EXIST. BEAM

- [7] ROUTE NEW DUCT BELOW CEILING IN FUME HOOD SHROUD, THEN TO TERMINATION POINTS.

1
M2.1

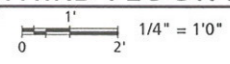
M2.1



2011 SB1 EDA - FUME-HOOD-REPLACEMENT

242, SCIENCE BUILDING 1 (ONE), 1025 S.W. MILL, Portland, Oregon 97201
PORTLAND STATE UNIVERSITY
 PORTLAND STATE UNIVERSITY, FACILITIES DEPT., 617 SW MONTGOMERY STREET, Ph. (503)725-3736, Fax (503)725-4329

THIRD FLOOR PLAN - MECHANICAL PLAN



GENERAL NOTES

- A** SEE M0.1 TO M0.5 FOR LEGENDS, ABBREVIATIONS, GENERAL CONDITIONS, SPECIFICATIONS AND MECHANICAL GENERAL NOTES.
- B** RETAIN ABATEMENT CONTRACTOR FOR ITEMS DEMOLISHED THAT CONTAIN ASBESTOS. TYP OF ALL.

KEYED NOTES

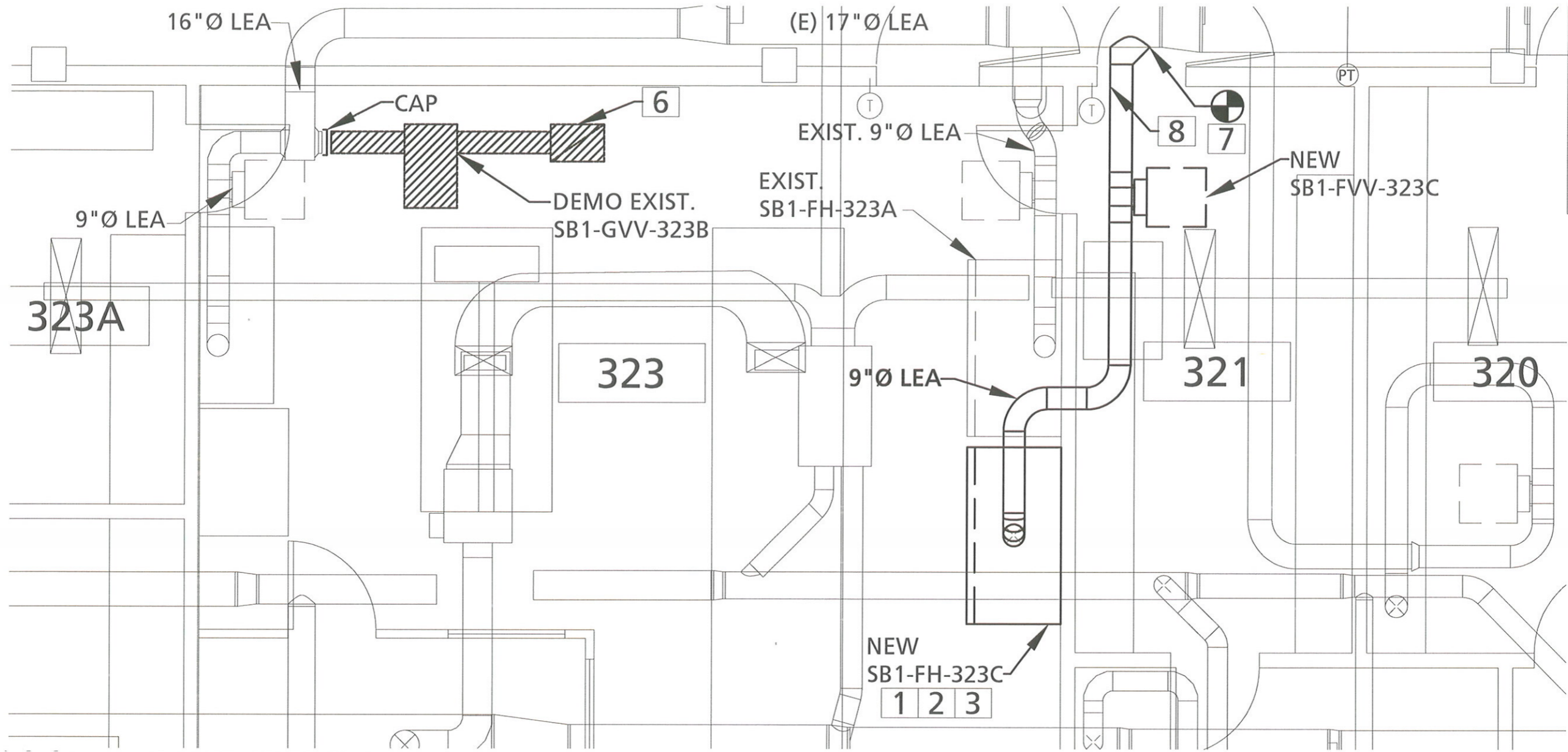
- 1** DEMO EXISTING CEILING EXHAUST GRILLE AND DUCT. REPLACE WITH CEILING TILE TO MATCH.
- 2** EXTEND COLD WATER, AIR WASTE, GAS AND ELECTRICAL FROM EXISTING CAP TO NEW FUME HOOD. FIELD VERIFY EXACT CONNECTION LOCATIONS.
- 3** PROVIDE PANEL TO ENCLOSE SPACE ABOVE FUME HOOD. PRIME AND PAINT PANEL TO MATCH FUME HOOD.
- 4** FURNISH AND INSTALL NEW FUME HOOD.
- 5** REPLACE EXISTING GVV-309C WITH NEW FVV-309C.
- 6** ROUTE NEW EXHAUST DUCT BELOW CEILING IN FUME HOOD SHROUD. RELOCATE WATER UTILITIES AS REQ'D.
- 7** 10" DUCT DROPS AND SPLITS TO 8" DUCTS TO TERMINATION POINTS.

1
M2.2

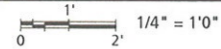
REVISIONS	
#	DATE-BY/DESCRIP.

BID/PERMIT SET

M2.2



↑ THIRD FLOOR PLAN - MECHANICAL



GENERAL NOTES

- A** SEE M0.1 TO M0.5 FOR LEGENDS, ABBREVIATIONS, GENERAL CONDITIONS, SPECIFICATIONS AND MECHANICAL GENERAL NOTES.
- B** RETAIN ABATEMENT CONTRACTOR FOR ITEMS DEMOLISHED THAT CONTAIN ASBESTOS. TYP OF ALL.

KEYED NOTES

- 1** EXTEND COLD WATER, AIR WASTE, GAS AND ELECTRICAL FROM EXISTING CAP TO NEW FUME HOOD. FIELD VERIFY EXACT CONNECTION LOCATIONS.
- 2** PROVIDE PANEL TO ENCLOSE SPACE ABOVE FUME HOOD. PRIME AND PAINT PANEL TO MATCH FUME HOOD.
- 3** FURNISH AND INSTALL NEW FUME HOOD.
- 4** REPLACE EXISTING GVV-309C WITH NEW FVV-309C.
- 5** DEMO EXISTING CEILING EXHAUST GRILLE AND DUCT. REPLACE WITH CEILING TILE TO MATCH.
- 6** REPLACE EXISTING RETURN AIR GRILLE WITH CEILING TILE.
- 7** INCLUDE BALANCING DAMPER AT CONNECTION TO EXISTING DUCTING.
- 8** SEAL PENETRATIONS

2011 SB1 EDA - FUME-HOOD-REPLACEMENT

242, SCIENCE BUILDING 1 (ONE), 1025 S.W. MILL, Portland, Oregon 97201
PORTLAND STATE UNIVERSITY
 PORTLAND STATE UNIVERSITY, FACILITIES DEPT., 617 SW MONTGOMERY STREET, Ph. (503)725-3738, Fax. (503)725-4329

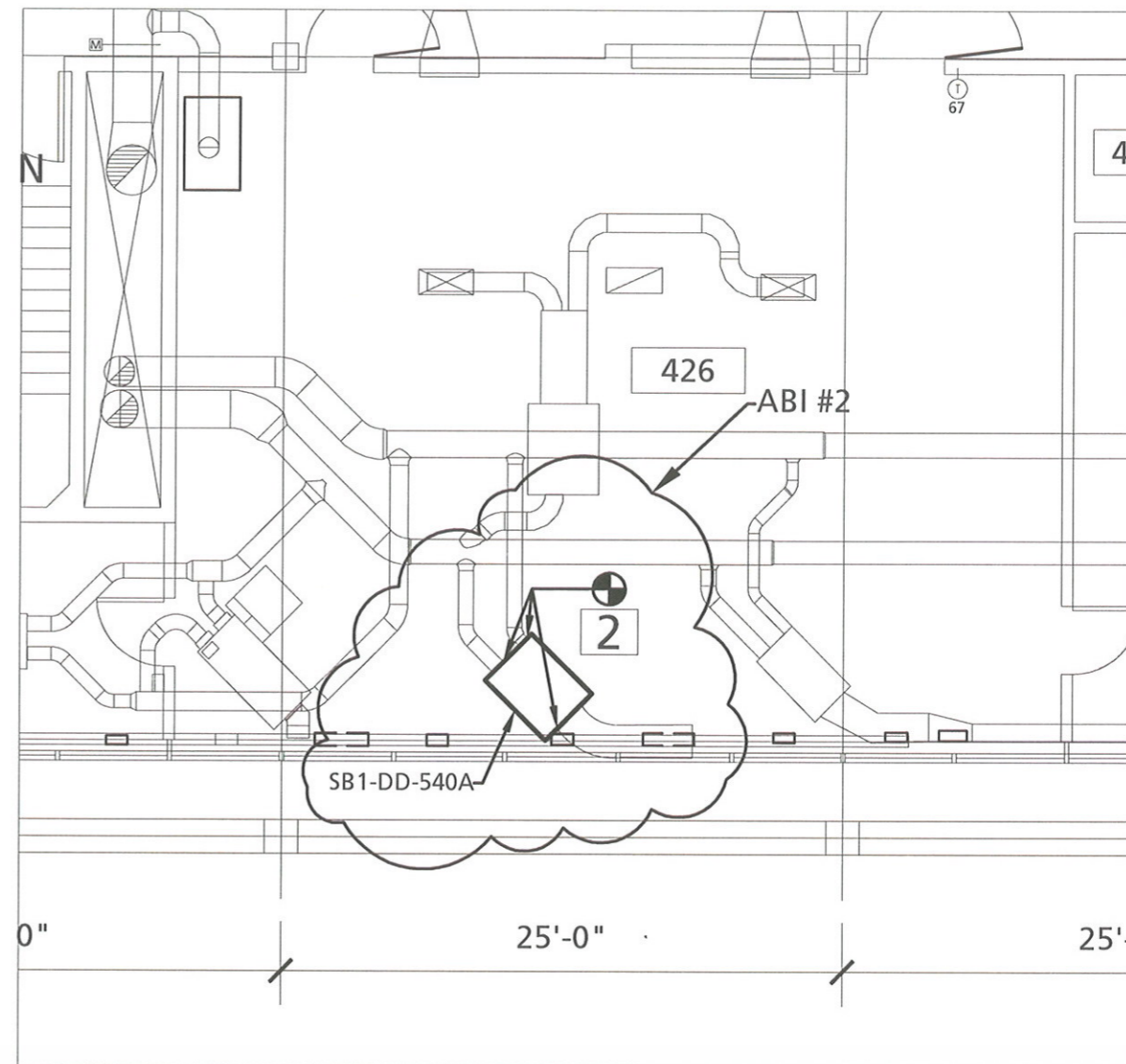
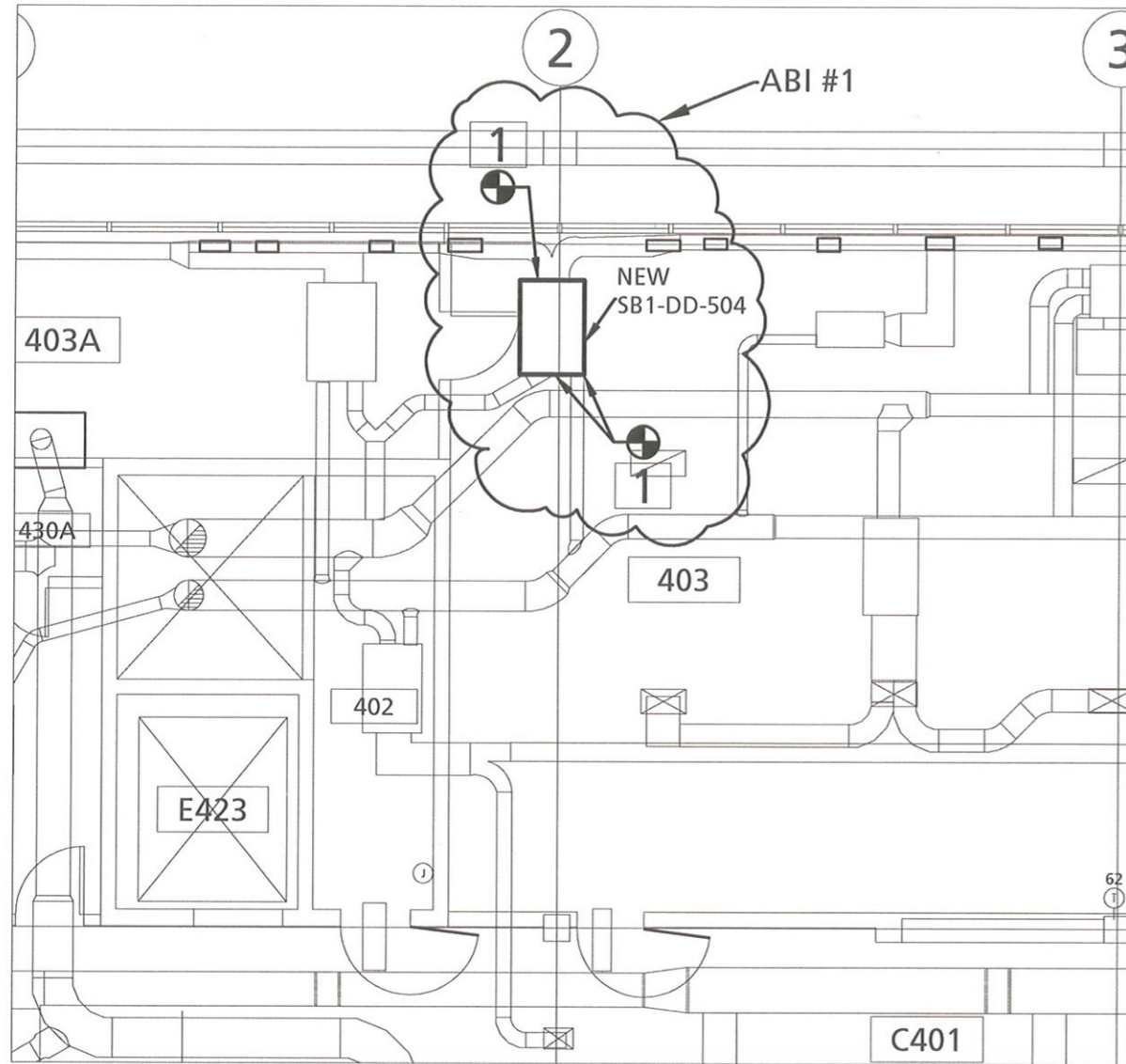
JOB NO.:	SB112C01
DRAWN:	IQ
CHECKED:	MF
DATE:	12/21/2011
ISSUED FOR	
BID / PERMIT:	3/21/2012

REVISIONS	
#	DATE-BY/DESCRP.

SHEET TITLE

BID/PERMIT SET

M2.3



↑ FOURTH FLOOR PLAN - MECHANICAL
 0 1' 2' 1/4" = 1'0"

GENERAL NOTES

- A** SEE M0.1 TO M0.5 FOR LEGENDS, ABBREVIATIONS, GENERAL CONDITIONS, SPECIFICATIONS AND MECHANICAL GENERAL NOTES.
- B** RETAIN ABATEMENT CONTRACTOR FOR ITEMS DEMOLISHED THAT CONTAIN ASBESTOS. TYP OF ALL.

KEYED NOTES

- 1** RECONNECT DUCT TO NEW SB1-DD-504.
- 2** RECONNECT EXIST. DUCT TO NEW SB1-DD-540A.



2011 SB1 EDA - FUME-HOOD-REPLACEMENT
 242, SCIENCE BUILDING 1 (ONE), 1025 S.W. MILL, Portland, Oregon 97201
PORTLAND STATE UNIVERSITY
 PORTLAND STATE UNIVERSITY, FACILITIES DEPT., 617 SW MONTGOMERY STREET, Ph. (503)725-3738, Fax (503)725-4329

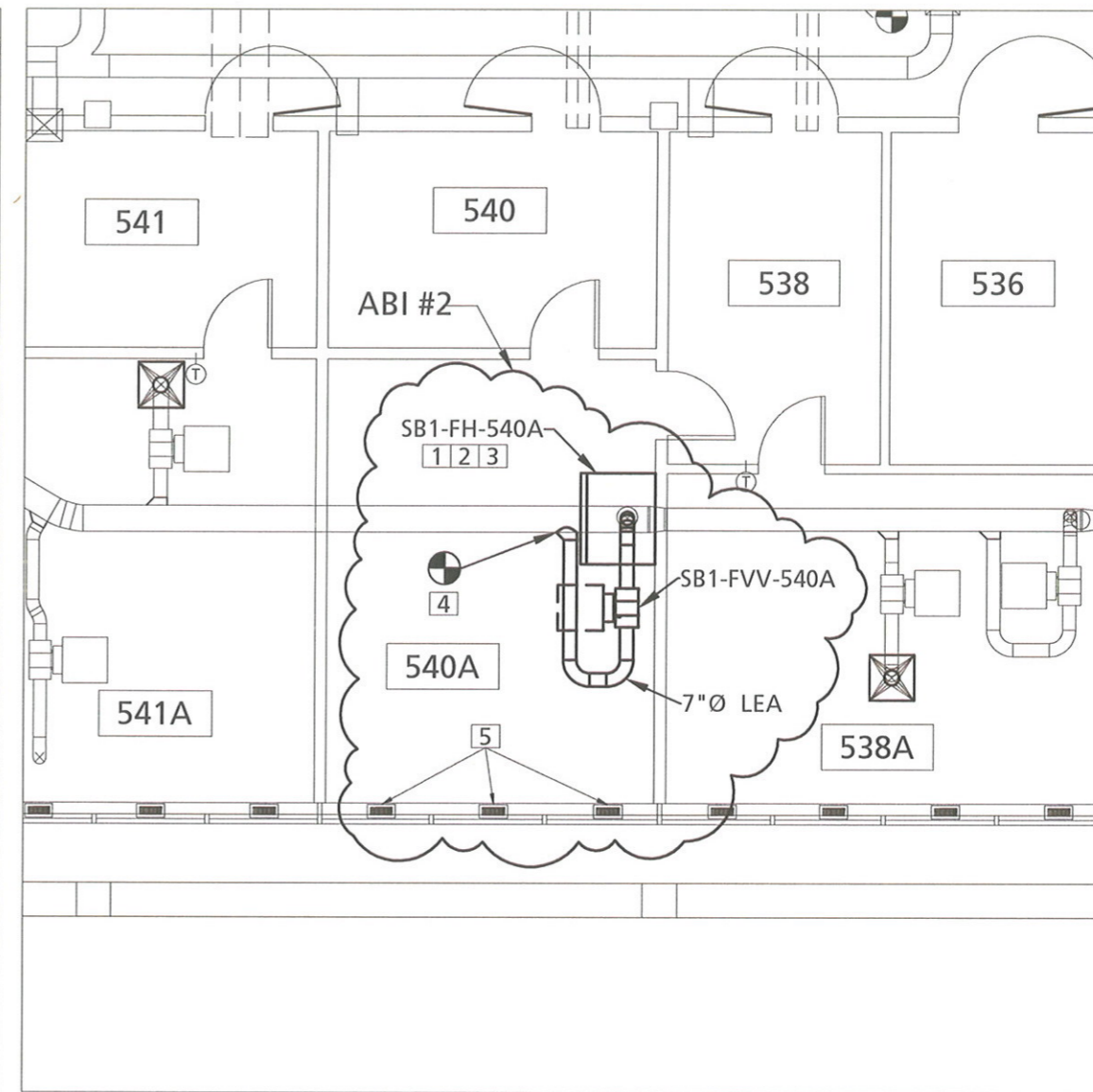
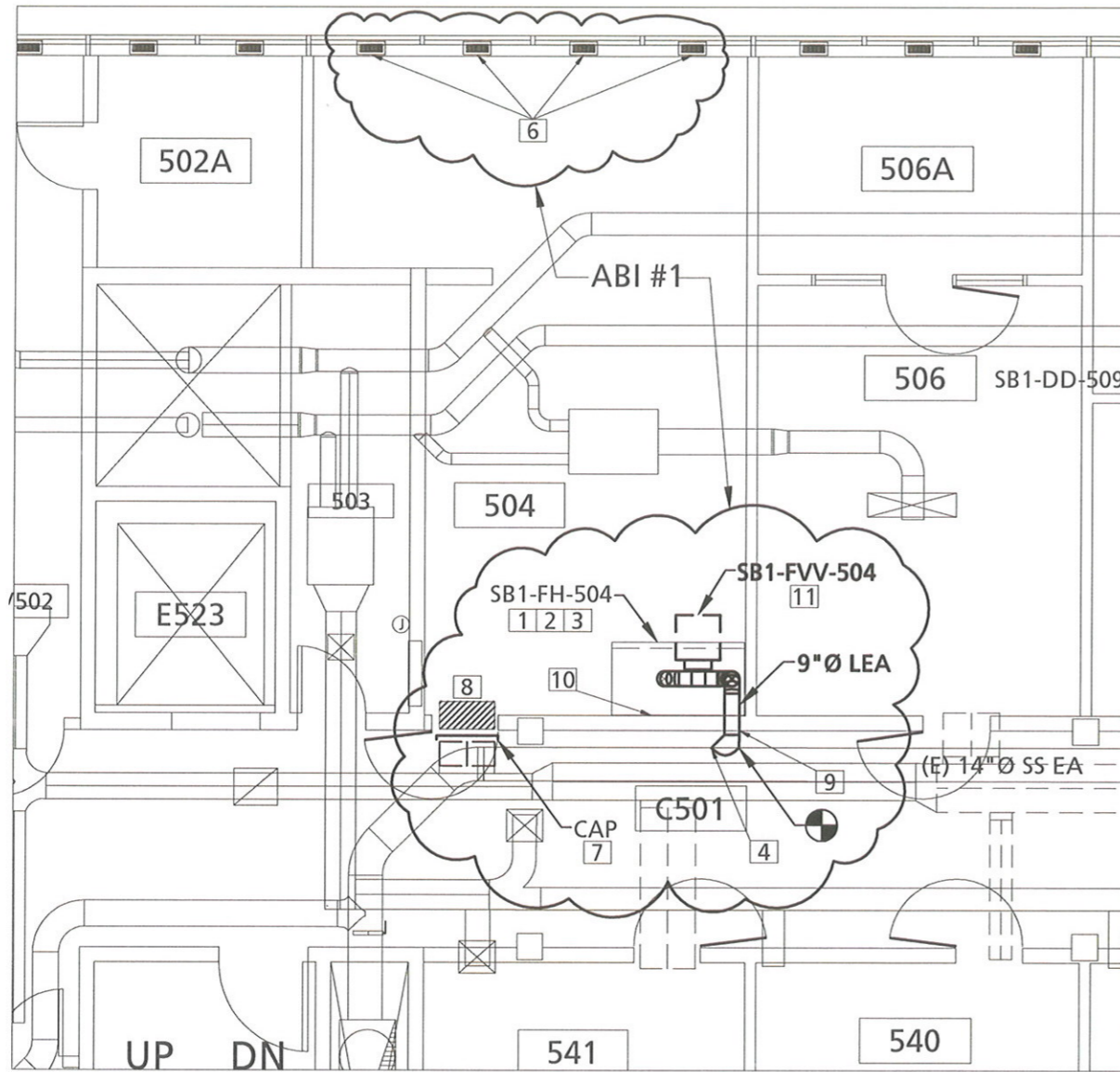
JOB NO.:	SB112C01
DRAWN:	IQ
CHECKED:	MF
DATE:	12/21/2011
ISSUED FOR:	
BID / PERMIT:	3/21/2012

REVISIONS	
#	DATE-BY/DESCRP.
△	
△	
△	
△	

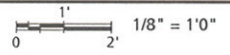
SHEET TITLE

BID/PERMIT SET

M2.4



FIFTH FLOOR PLAN - MECHANICAL



2011 SB1 EDA - FUME-HOOD-REPLACEMENT

242, SCIENCE BUILDING 1 (ONE), 1025 S.W. MILL, Portland, Oregon 97201
PORTLAND STATE UNIVERSITY
 PORTLAND STATE UNIVERSITY, FACILITIES DEPT., 617 SW MONTGOMERY STREET, Ph. (503)725-3738, Fax (503)725-4329

JOB NO.:	SB112C01
DRAWN:	IQ
CHECKED:	MF
DATE:	12/21/2011
ISSUED FOR	
BID / PERMIT:	3/21/2012

REVISIONS	
#	DATE-BY/DESCRP.
△	
△	
△	
△	

SHEET TITLE

BID/PERMIT SET

GENERAL NOTES

- A** SEE M0.1 TO M0.5 FOR LEGENDS, ABBREVIATIONS, GENERAL CONDITIONS, SPECIFICATIONS AND MECHANICAL GENERAL NOTES.
- B** RETAIN ABATEMENT CONTRACTOR FOR ITEMS DEMOLISHED THAT CONTAIN ASBESTOS. TYP OF ALL.

KEYED NOTES

- 1** CONNECT EXISTING UTILITIES TO NEW FUME HOOD. EXTEND COLD WATER, AIR, WASTE, GAS AND ELECTRICAL FROM EXISTING CAP TO NEW FUME HOOD. FIELD VERIFY EXACT CONNECTION LOCATIONS.
- 2** PROVIDE PANEL TO ENCLOSE SPACE ABOVE FUME HOOD. PRIME AND PAINT PANEL TO MATCH FUME HOOD.
- 3** FURNISH AND INSTALL NEW FUME HOOD.
- 4** PROVIDE BALANCING DAMPER AT POINT OF CONNECTION
- 5** BALANCE DIFFUSER TO 70 CFM (TYP. 3)
- 6** BALANCE DIFFUSER TO 100 CFM (TYP. 4)
- 7** DEMO RETURN AIR DUCT AND CAP AT MAIN.
- 8** REMOVE RA GRILLE, DRYWALL AND PAINT TO MATCH.
- 9** FIRE SEAL PENETRATION.
- 10** DEMO EXIST. UPPER AND LOWER CABINET.
- 11** ROUTE NEW DUCT THROUGH EXIST. OPENING IN STEEL BEAM.

M2.5