

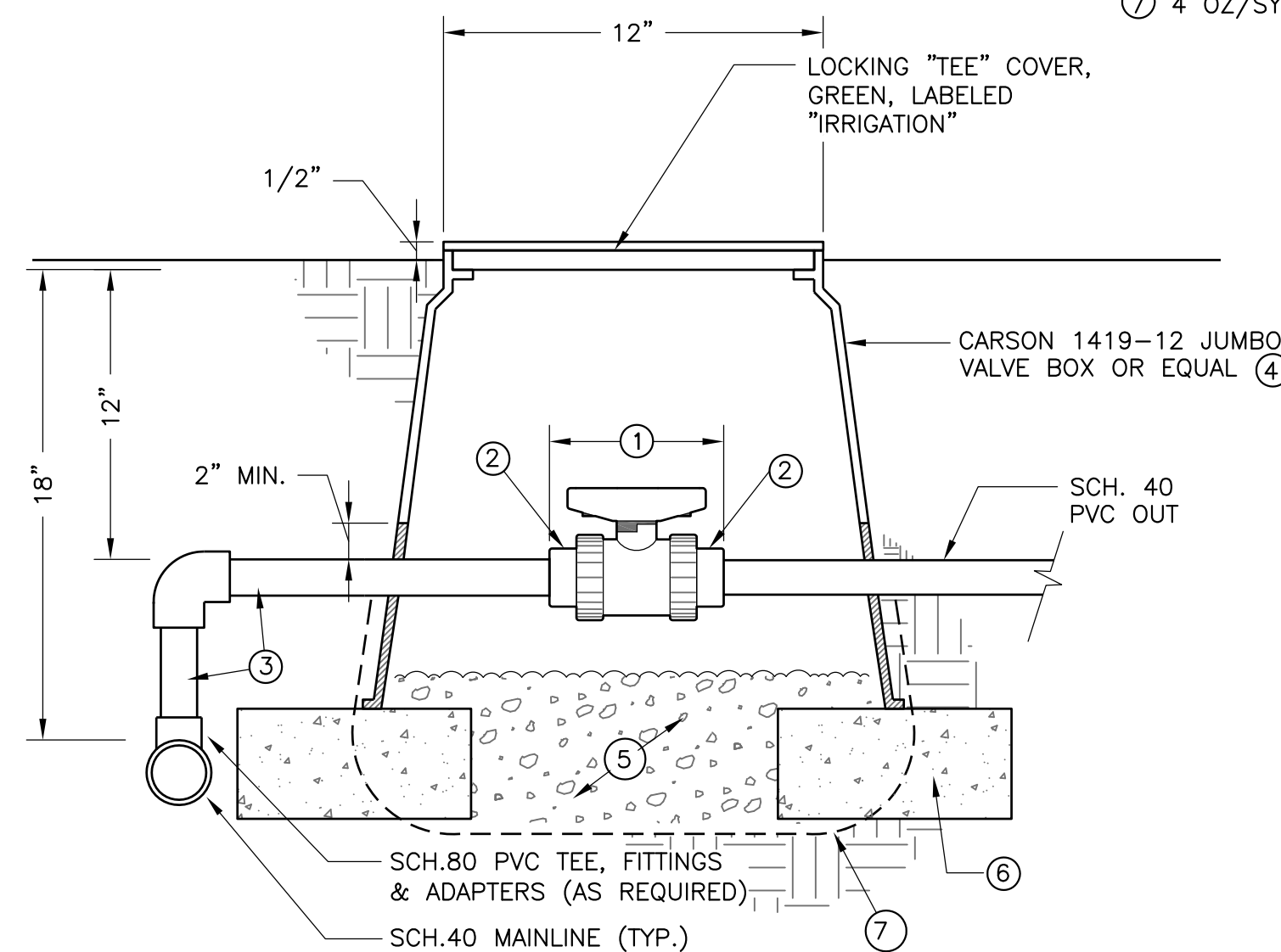
**NOTES:**

- ① BRASS GATE VALVE, THREADED INLET/OUTLET, SIZED PER THE DRAWINGS OR ASSOCIATED INLET-SIDE PIPE
- ② BRASS UNION
- ③ BRASS NIPPLE
- ④ SCHEDULE 40- PVC BUSHING, SxT
- ⑤ MIN. 6" DEPTH 5/8" WASHED PEA GRAVEL

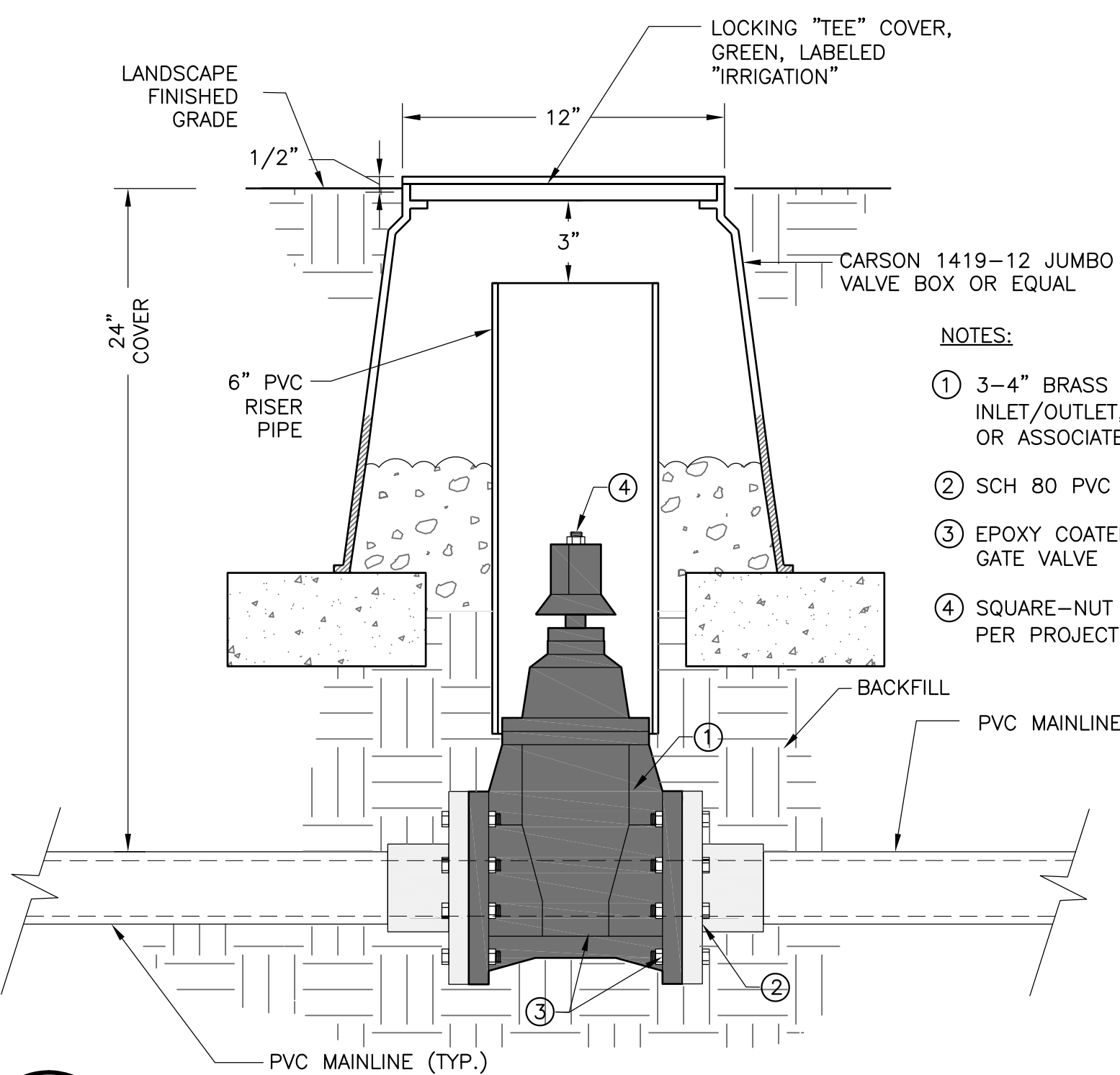
**1** GATE VALVE & BOX (1.5 INCH & SMALLER)  
F-7.4 NOT TO SCALE

**NOTES:**

- ① SPEARS TRUE-UNION PVC BALL
- ② PVC UNION
- ③ MIN. 12" HORIZONTAL & VERTICAL OFFSET FROM MAINLINE
- ④ PLASTIC VALVE BOX, MIN. 12"Ø
- ⑤ MIN. 6" DEPTH 5/8" WASHED PEA GRAVEL
- ⑥ BRICK UNDER EACH CORNER OF THE VALVE BOX
- ⑦ 4 OZ/SY NON-WOVEN GEOTEXTILE



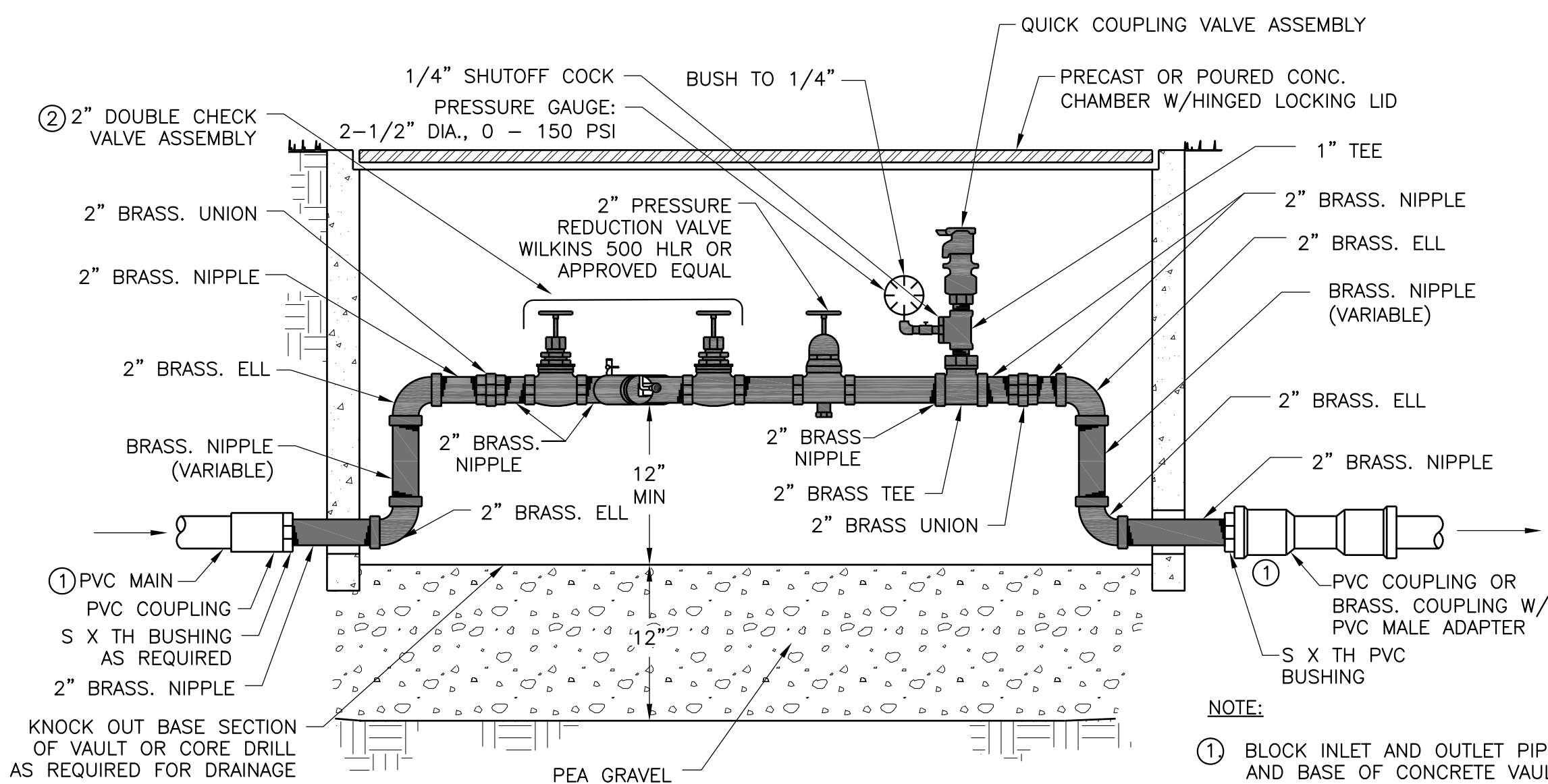
**4** BALL VALVE IN LANDSCAPE  
F-7.4 NOT TO SCALE



**NOTES:**

- ① 3-4" BRASS GATE VALVE, FLANGED INLET/OUTLET, SIZED PER THE DRAWINGS OR ASSOCIATED INLET-SIDE PIPE
- ② SCH 80 PVC FLANGE
- ③ EPOXY COATED IRON BODY RESILIENT SEAL GATE VALVE
- ④ SQUARE-NUT ACTUATOR (PROVIDE 2 KEYS PER PROJECT)

**2** GATE VALVE & BOX (2 INCH & LARGER)  
F-7.4 NOT TO SCALE



**NOTE:**

- ① BLOCK INLET AND OUTLET PIPES AND BASE OF CONCRETE VAULT TO PREVENT SETTLEMENT
- ② RE-CERTIFY EXISTING DOUBLE CHECK VALVE ASSEMBLY

**5** DOUBLE CHECK VALVE ASSEMBLY  
F-7.4 NOT TO SCALE



www.AuslandGroup.com  
Ashland 541.482.0923  
Eugene 541.345.1094  
Grants Pass 541.476.3788  
Medford 541.773.3387



Drawn By:	CPW, JS	Director Decision Date:	N/A
Designed By:	EJG	First Submittal Date:	07-07-2015
Checked By:	EJG, RSH	Second Submittal Date:	
Approved:		City Approval Date:	
Rev 1:		By:	
Rev 2:		By:	
Rev 3:		By:	
As-Built:			

OREGON TECH TRACK AND SOCCER PROJECT  
CONSTRUCTION DOCUMENTS  
MAP NO. 38-09-00, TAX LOT 4900  
3201 CAMPUS DRIVE, KLAMATH FALLS, OREGON  
CITY PROJECT NO. OIT-2704-P-13-17

VERIFY SCALES  
ORIGINAL DRAWING: 1" = 1'-0"  
IF NOT ONE INCH ON THIS SHEET, ADJUST SCALES ACCORDINGLY

REGISTERED LANDSCAPE ARCHITECT  
548  
ROBERT HARDING  
OREGON  
05/31/15

SHEET  
**F-7.4**  
IRRIGATION & WASHWATER DETAILS