

### IRRIGATION NOTES

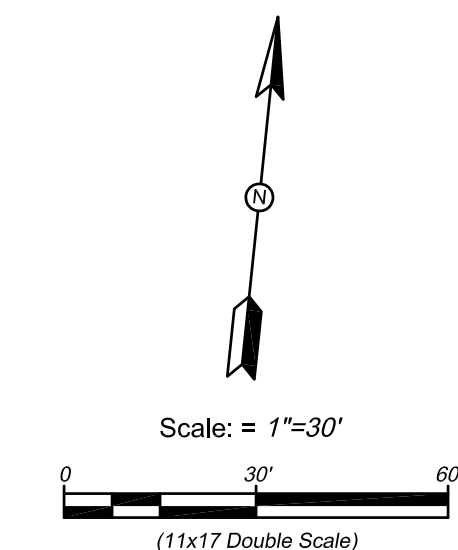
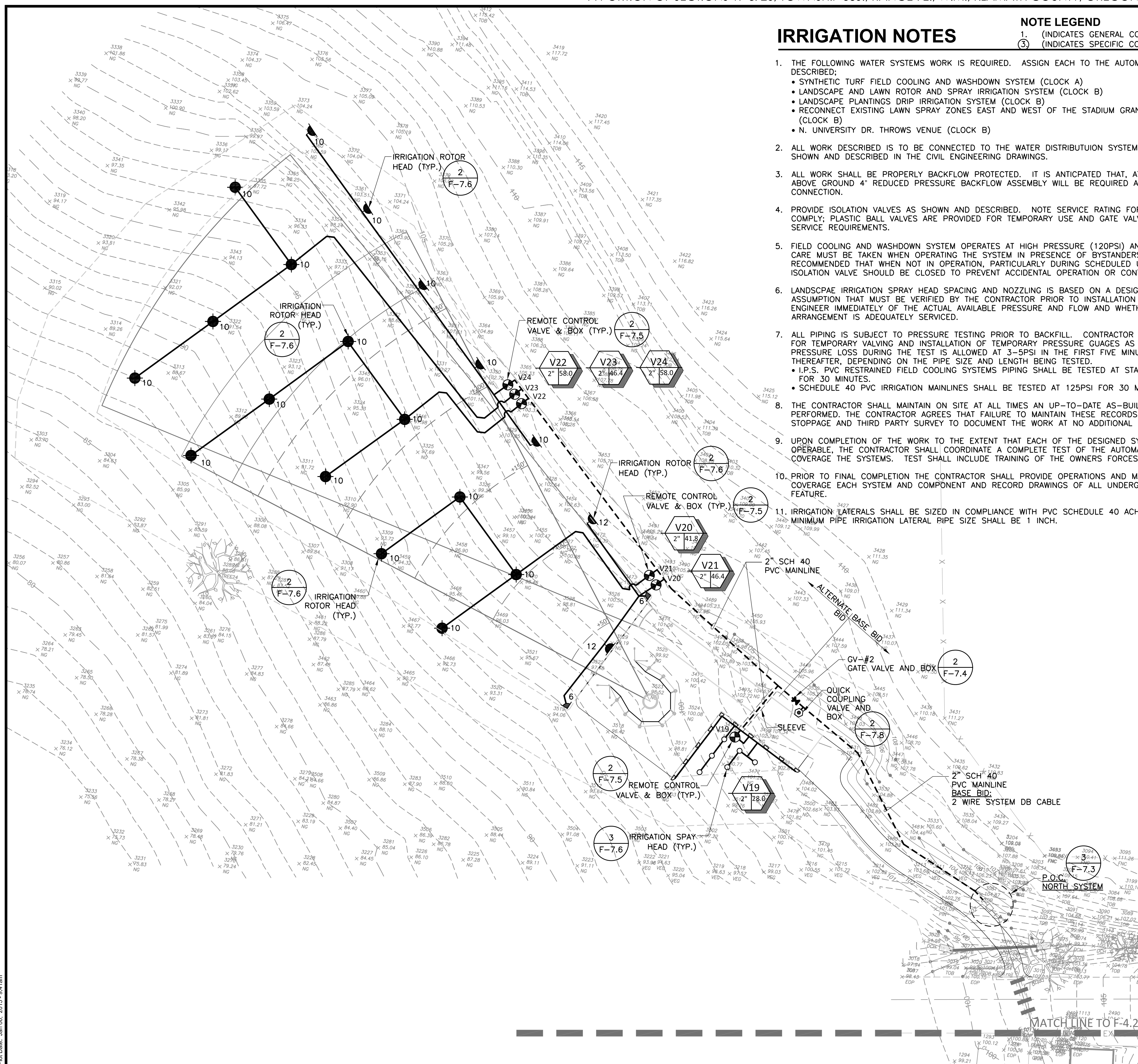
#### NOTE LEGEND

- 1. (INDICATES GENERAL CONSTRUCTION NOTE)
- ③ (INDICATES SPECIFIC CONSTRUCTION KEYNOTE)

1. THE FOLLOWING WATER SYSTEMS WORK IS REQUIRED. ASSIGN EACH TO THE AUTOMATIC CONTROLLER DESCRIBED:
  - SYNTHETIC TURF FIELD COOLING AND WASHDOWN SYSTEM (CLOCK A)
  - LANDSCAPE AND LAWN ROTOR AND SPRAY IRRIGATION SYSTEM (CLOCK B)
  - LANDSCAPE PLANTINGS DRIP IRRIGATION SYSTEM (CLOCK B)
  - RECONNECT EXISTING LAWN SPRAY ZONES EAST AND WEST OF THE STADIUM GRANDSTAND STRUCTURE (CLOCK B)
  - N. UNIVERSITY DR. THROWS VENUE (CLOCK B)
2. ALL WORK DESCRIBED IS TO BE CONNECTED TO THE WATER DISTRIBUTION SYSTEM EXISTING ON SITE AS SHOWN AND DESCRIBED IN THE CIVIL ENGINEERING DRAWINGS.
3. ALL WORK SHALL BE PROPERLY BACKFLOW PROTECTED. IT IS ANTICIPATED THAT, AT A MINIMUM, A HEATED, ABOVE GROUND 4" REDUCED PRESSURE BACKFLOW ASSEMBLY WILL BE REQUIRED AT THE POINT OF CONNECTION.
4. PROVIDE ISOLATION VALVES AS SHOWN AND DESCRIBED. NOTE SERVICE RATING FOR EACH VALVE AND COMPLY; PLASTIC BALL VALVES ARE PROVIDED FOR TEMPORARY USE AND GATE VALVES FOR LONGER-TERM SERVICE REQUIREMENTS.
5. FIELD COOLING AND WASHDOWN SYSTEM OPERATES AT HIGH PRESSURE (120PSI) AND FLOW (100GPM) RATES. CARE MUST BE TAKEN WHEN OPERATING THE SYSTEM IN PRESENCE OF BYSTANDERS OR PEDESTRIANS. IT IS RECOMMENDED THAT WHEN NOT IN OPERATION, PARTICULARLY DURING SCHEDULED USE, THE SYSTEM ISOLATION VALVE SHOULD BE CLOSED TO PREVENT ACCIDENTAL OPERATION OR CONTROLLER MALFUNCTION.
6. LANDSCAPE IRRIGATION SPRAY HEAD SPACING AND NOZZLING IS BASED ON A DESIGN PRESSURE AND FLOW ASSUMPTION THAT MUST BE VERIFIED BY THE CONTRACTOR PRIOR TO INSTALLATION OF PIPING. NOTIFY THE ENGINEER IMMEDIATELY OF THE ACTUAL AVAILABLE PRESSURE AND FLOW AND WHETHER THE DESIGNED ZONING ARRANGEMENT IS ADEQUATELY SERVICED.
7. ALL PIPING IS SUBJECT TO PRESSURE TESTING PRIOR TO BACKFILL. CONTRACTOR TO MAKE ACCOMODATIONS FOR TEMPORARY VALVING AND INSTALLATION OF TEMPORARY PRESSURE GAUGES AS NEEDED. GENERALLY, PRESSURE LOSS DURING THE TEST IS ALLOWED AT 3-5PSI IN THE FIRST FIVE MINUTES, NO MORE THAN 2PSI THEREAFTER, DEPENDING ON THE PIPE SIZE AND LENGTH BEING TESTED.
  - I.P.S. PVC RESTRAINED FIELD COOLING SYSTEMS PIPING SHALL BE TESTED AT STATIC PRESSURE PLUS 25% FOR 30 MINUTES.
  - SCHEDULE 40 PVC IRRIGATION MAINLINES SHALL BE TESTED AT 125PSI FOR 30 MINUTES.
8. THE CONTRACTOR SHALL MAINTAIN ON SITE AT ALL TIMES AN UP-TO-DATE AS-BUILT RECORD OF A WORK PERFORMED. THE CONTRACTOR AGREES THAT FAILURE TO MAINTAIN THESE RECORDS REQUIRES A WORK STOPPAGE AND THIRD PARTY SURVEY TO DOCUMENT THE WORK AT NO ADDITIONAL EXPENSE TO THE OWNER.
9. UPON COMPLETION OF THE WORK TO THE EXTENT THAT EACH OF THE DESIGNED SYSTEMS IS FULLY OPERABLE, THE CONTRACTOR SHALL COORDINATE A COMPLETE TEST OF THE AUTOMATIC OPERATION AND COVERAGE THE SYSTEMS. TEST SHALL INCLUDE TRAINING OF THE OWNERS FORCES IN SAID OPERATION.
10. PRIOR TO FINAL COMPLETION THE CONTRACTOR SHALL PROVIDE OPERATIONS AND MAINTENANCE MANUALS COVERAGE EACH SYSTEM AND COMPONENT AND RECORD DRAWINGS OF ALL UNDERGROUND AND SURFACE FEATURE.
11. IRRIGATION LATERALS SHALL BE SIZED IN COMPLIANCE WITH PVC SCHEDULE 40 ACHIEVING MINIMAL PSI LOSS. MINIMUM PIPE IRRIGATION LATERAL PIPE SIZE SHALL BE 1 INCH.

### IRRIGATION LEGEND

- 2" GATE VALVE AND BOX
- 1" QUICK COUPLER VALVE AND BOX
- SCH 40 LANDSCAPE IRRIGATION MAINLINE
- SCH 40 LANDSCAPE IRRIGATION LATERALS
- RAINBIRD F4-PC-SS-NP-6, 80 PSI, 49" RADIUS, 6.9 GPM
- RAINBIRD F4-PC-SS-NP-10, 80 PSI, 55" RADIUS, 11.6 GPM
- RAINBIRD F4-PC-SS-NP-12, 80 PSI, 61" RADIUS, 14.0 GPM
- RAINBIRD F4-FC-SS-NP-10, 80 PSI, 55" RADIUS, 11.6 GPM
- FULL POP UP SPRINKLER 30 PSI, 12' RADIUS, 2.60 GPM, RAINBIRD 1800-SAM-PRS
- HALF POP UP SPRINKLER 30 PSI, 12' RADIUS, 1.30 GPM, RAINBIRD 1800-SAM-PRS
- QUARTER POP UP SPRINKLER 30 PSI, 12' RADIUS, 0.65 GPM, RAINBIRD 1800-SAM-PRS
- REMOTE CONTROL VALVE IN INDIVIDUAL BOX RAINBIRD PEB-PRS-D SPRAY HEADS AND RAINBIRD PEB ROTOR HEADS
- IRRIGATION SLEEVE
- VALVE STATION
- VALVE SIZE
- VALVE GALLONS PER MINUTE (GPM)



www.AuslandGroup.com  
 Ashland 541.482.0923  
 Eugene 541.345.1094  
 Grants Pass 541.476.3788  
 Medford 541.773.3387



Drawn By:	CPW, JS	Director Decision Date:	N.A.
Designed By:	EUG	First Submittal Date:	07-07-2015
Checked By:	EUG, RSH	Second Submittal Date:	
Approved:		City Approval Date:	
Rev 1:		By:	
Rev 2:		By:	
Rev 3:		By:	
As-Built:			

OREGON TECH TRACK AND SOCCER PROJECT  
 CONSTRUCTION DOCUMENTS  
 MAP NO. 38-09-00, TAX LOT 4900  
 3201 CAMPUS DRIVE, KLAMATH FALLS, OREGON  
 CITY PROJECT NO. OIT-2704-P-13-17

VERIFY SCALES  
 ORIGINAL DRAWING: BAR IS ONE INCH LONG  
 IF NOT ONE INCH ON THIS SHEET, ADJUST SCALES ACCORDINGLY

REGISTERED LANDSCAPE ARCHITECT  
 548  
 Robert Harding  
 OREGON  
 05/31/15

SHEET  
**F-4.2**  
 FIELD EVENTS  
 IRRIGATION PLAN



Drawing name: K:\Files\Current Project Files\Oregon Institute of Technology Drawings\F-01\_OIT CURRENT 22-04.dwg  
 Plot Date: Jun 09, 2015 8:54am