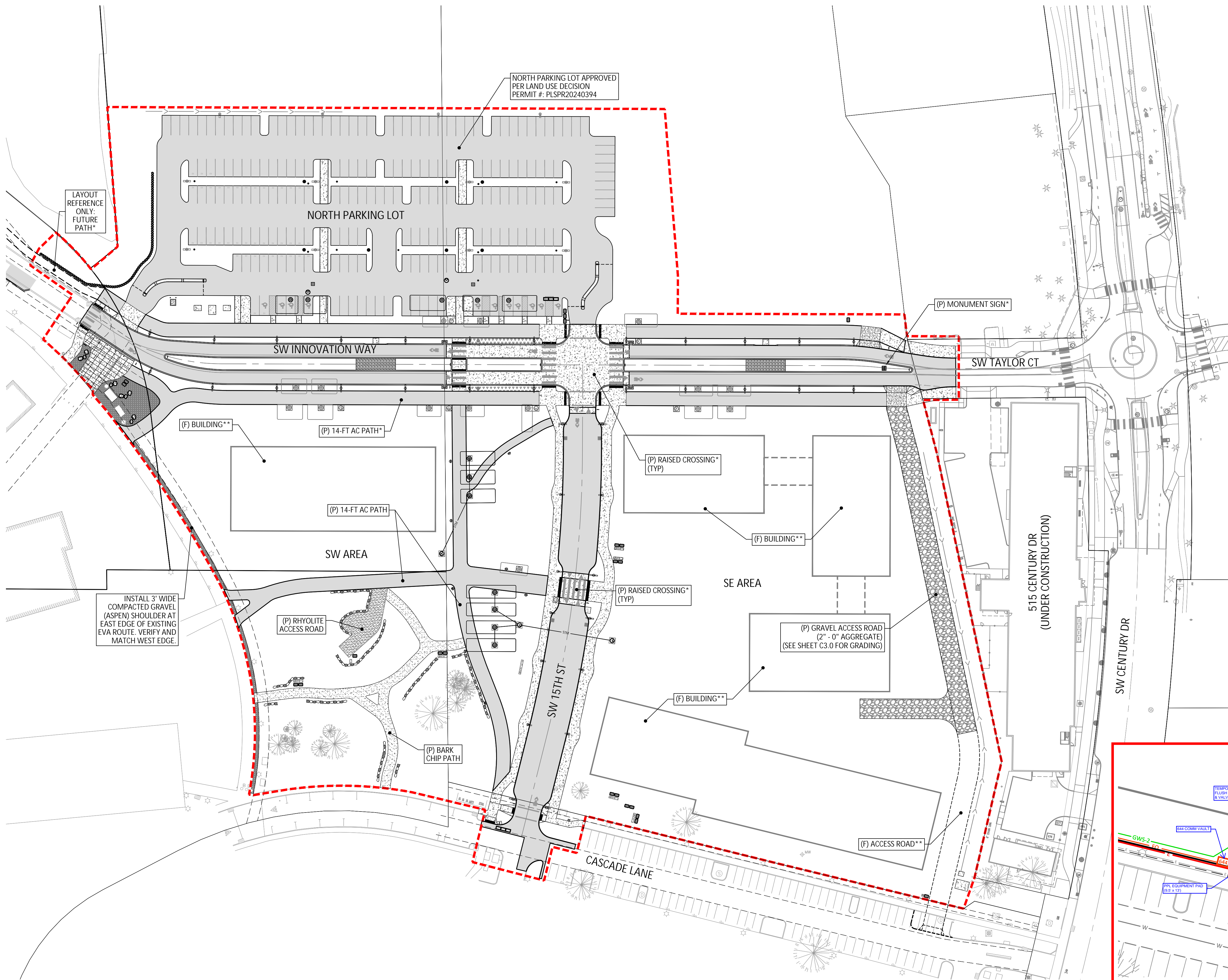


P:\03-Bend\KIR-Kinzie-River\KIR-05 (OSU-C-DR)\KIR05-DWG\Sheets\SIMP\KIR05-SIMP_C2_Site Plan.dwg



LEGEND:

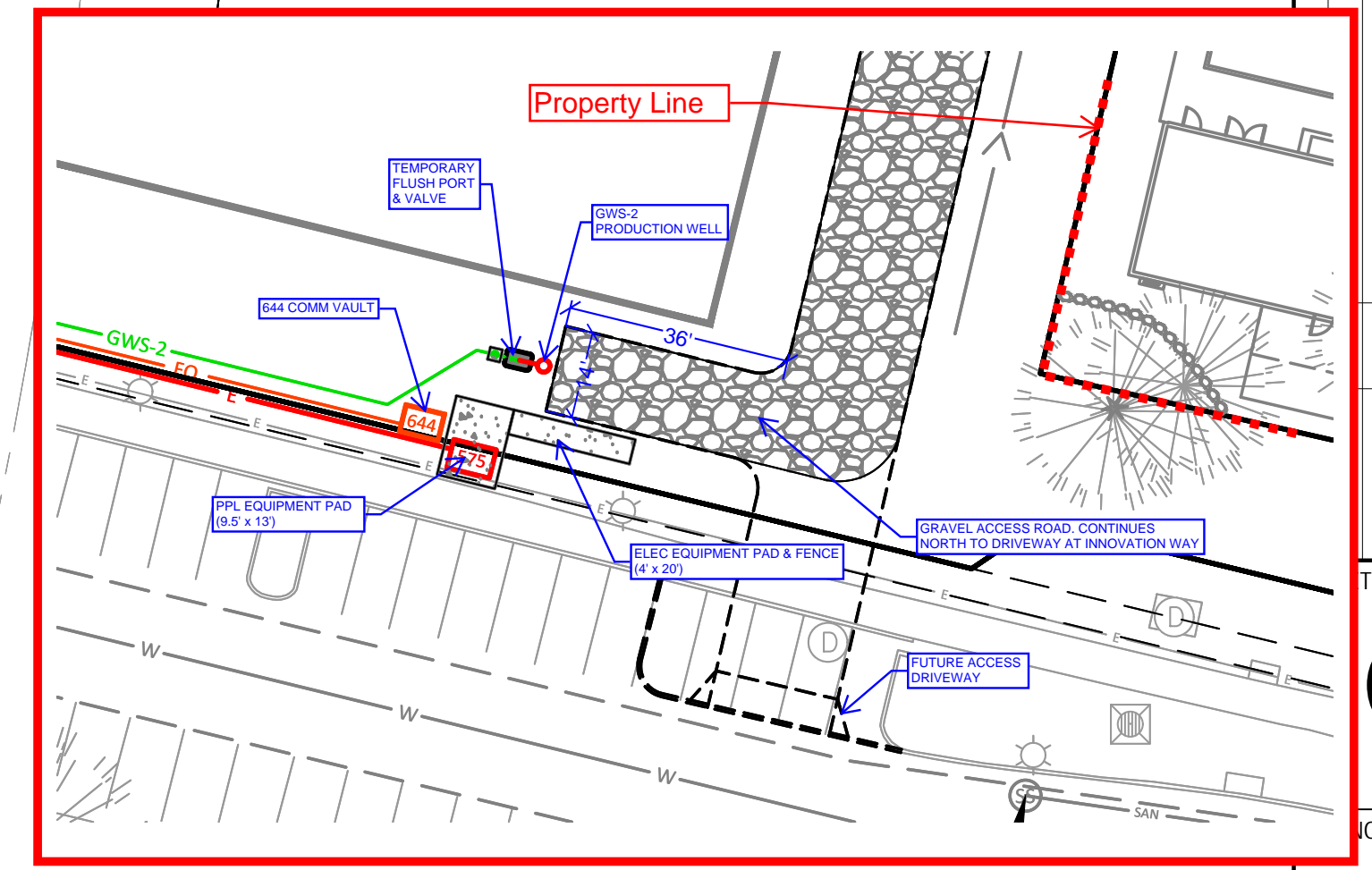
- APPROXIMATE LIMITS OF CONSTRUCTION
- - - EXISTING TAXLOT LINE
- CENTER LINE
- AC PAVEMENT

PARKING DATA

AREA	# OF STALLS
NORTH PARKING LOT	215

*NOTE:
SHOWN FOR REFERENCE ONLY. SEE PUBLIC INFRASTRUCTURE PLANS FOR ROADWAY PLANS.
PERMIT #: PRINFR202400714

**NOTE:
SHOWN FOR REFERENCE ONLY. FINAL DESIGN AND LOCATION TO BE DETERMINED AT TIME OF PARCEL DEVELOPMENT.



OVERALL SITE MAP
OSU-CASCADES INNOVATION DISTRICT
REMEDIATION PHASE 1
BEND, OREGON

Harper Houf Peterson Righellis Inc.
ENGINEERS*PLANNERS
LANDSCAPE ARCHITECTS & SURVEYORS
250 NW Franklin Avenue, Suite 404, Bend, OR 97703
phone: 541.318.1161 www.hhpr.com fax: 541.318.1141

REGISTERED PROFESSIONAL ENGINEER
NICOLAS G. SPEROS
OREGON
MAY 15, 2019
EXPIRES: 06/30/26

DESIGNED:	MD
DRAWN:	MD
CHECKED:	NS
DATE:	12.23.2024

DATE	NO.	DESCRIPTION
		R E V I S I O N S

T NO.
C2.0
NO. PRSIMP202400716