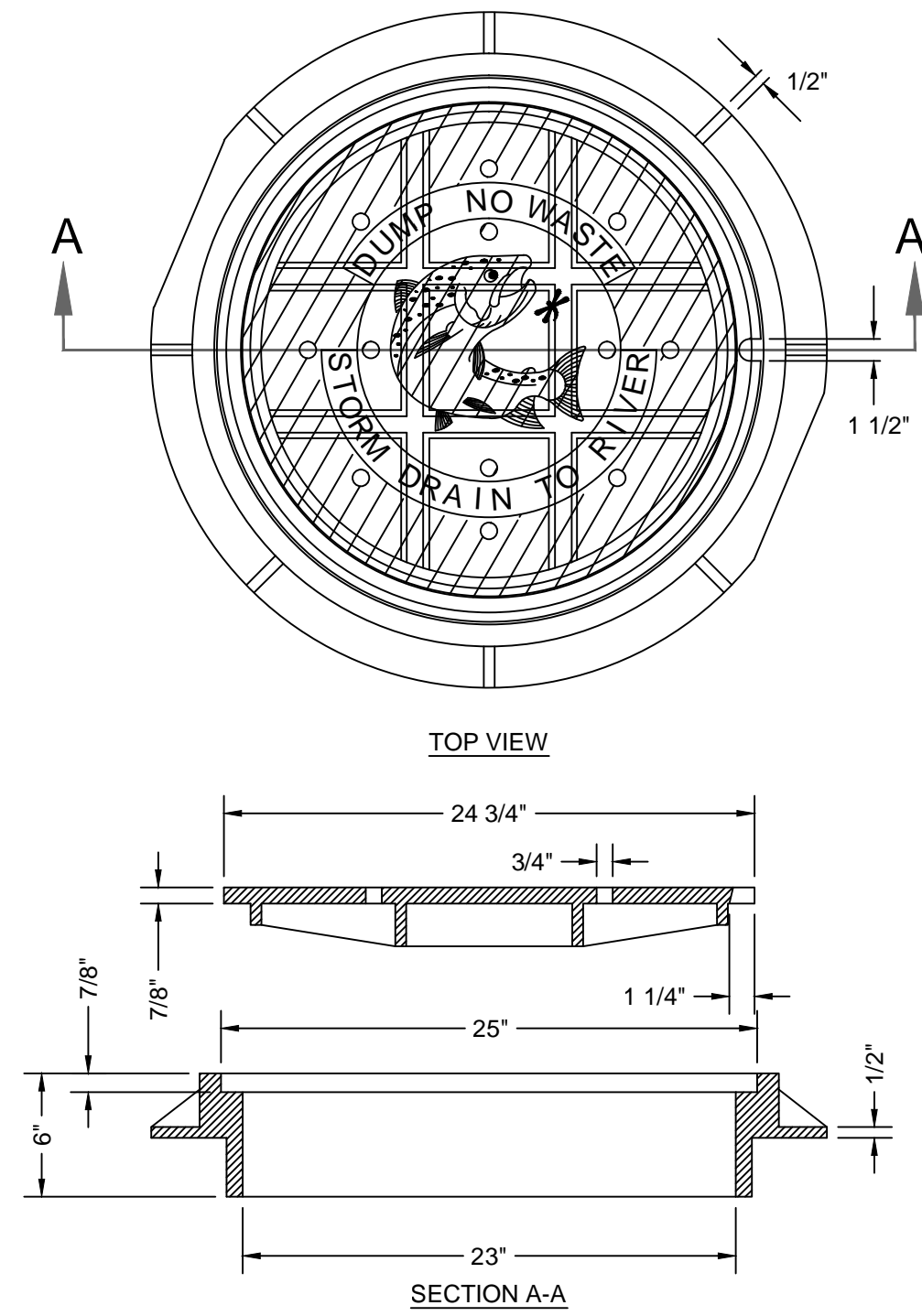


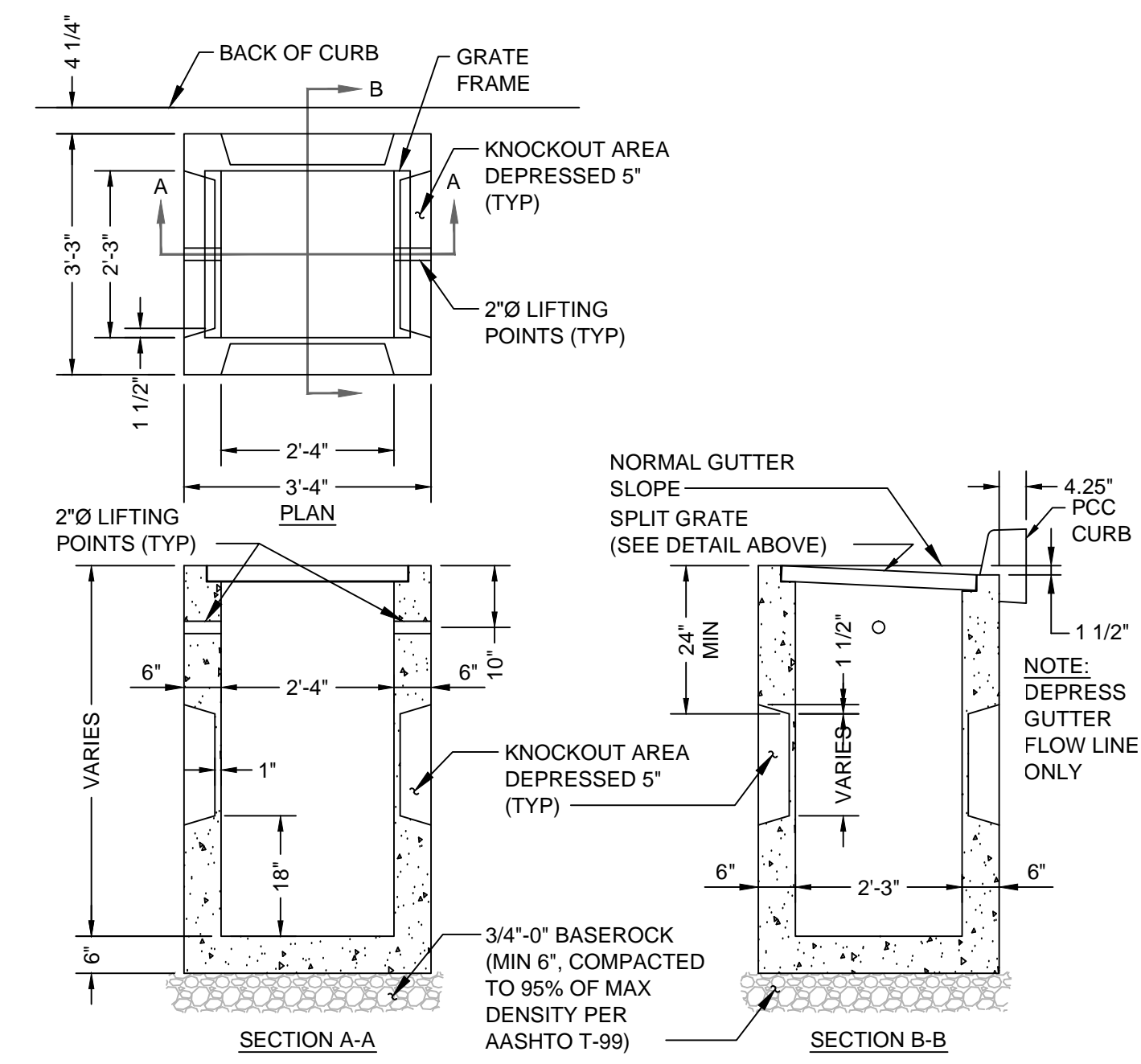
NOTE: ALL PRECAST SECTIONS SHALL CONFORM TO REQUIREMENTS OF ASTM C 478.

1
C2.4 Storm Manhole w/ Water Quality Tee
SCALE: NTS



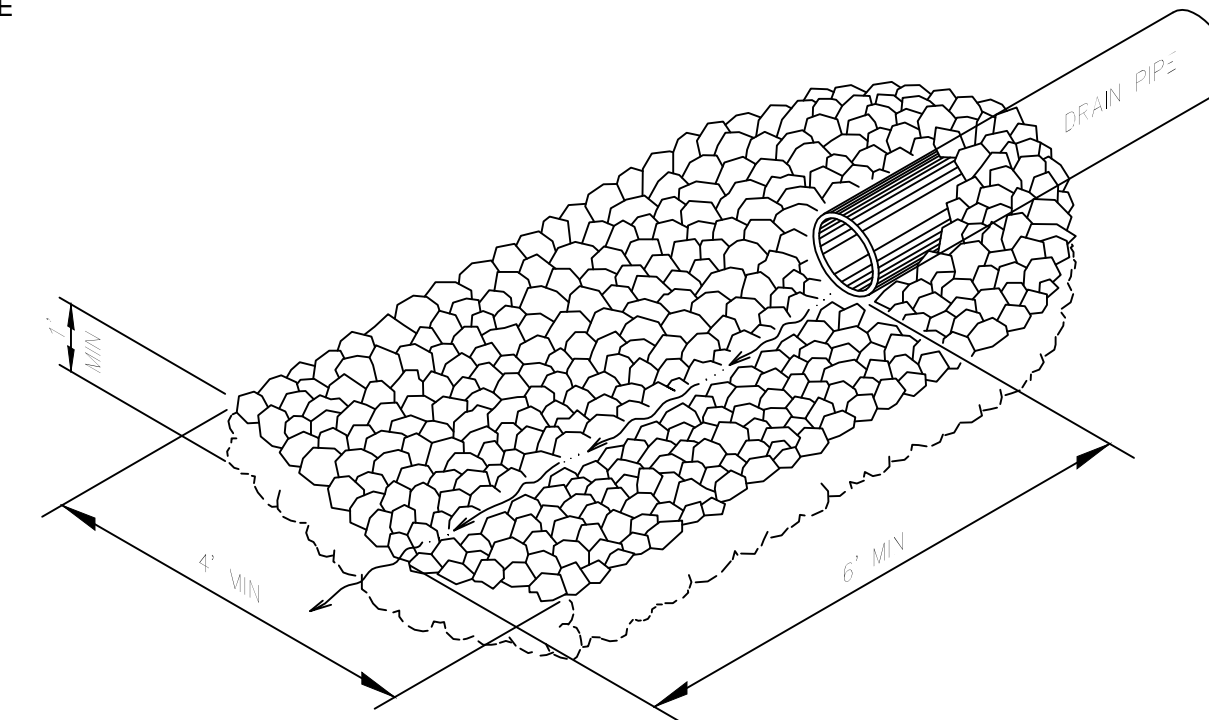
- NOTES:
1. RING AND COVER TO BE MACHINED TO A TRUE 25" AND A TRUE BEARING ALL AROUND.
 2. CASTINGS TO BE: D&L FOUNDRY AND SUPPLY MODEL A-2107, OR APPROVED EQUAL.

2
C2.4 Manhole Ring and Cover
SCALE: NTS



- CONSTRUCTION NOTES:
1. GRATE AND FRAME MAY EACH BE OF CAST IRON OR WELDED STEEL CONSTRUCTION.
 2. FOR PRECAST BOX; CURBS MUST BE HAND FORMED 10" EACH SIDE OF CATCH BASIN.
 3. CONCRETE STRENGTH SHALL BE 5000 PSI WITH FIBER MESH.
 4. CATCH BASIN AND GRATE SHALL MEET HS20 LOADING.
 5. A MINIMUM SUMP DEPTH OF 18" IS REQUIRED.
 6. OUTLET PIPE SHALL HAVE A MINIMUM OF 24" OF COVER.

3
C2.4 Catch Basin
SCALE: NTS



4
C2.4 Riprap Dissipation Pad
SCALE: NTS



www.AuslandGroup.com

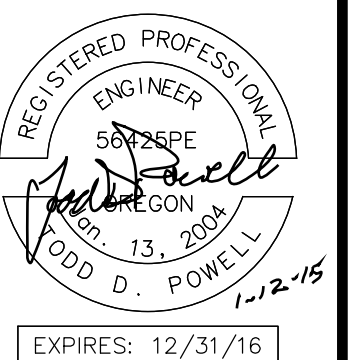
Ashland 541.482.0923
Eugene 541.345.1094
Grants Pass 541.476.3788
Medford 541.773.3387



Director Decision Date:	N.A.
First Submittal Date:	
Second Submittal Date:	
City Approval Date:	
Drawn By:	TDP
Designed By:	TDP
Checked By:	TDP, MAMA
Approved:	
Rev 1:	By: [Signature]
Rev 2:	By: [Signature]
Rev 3:	By: [Signature]
As-Shift:	

OREGON TECH TRACK AND
SOCCER PROJECT
CONSTRUCTION DOCUMENTS
MAP NO. 38.09-00, TAX LOT 4900
3201 CAMPUS DRIVE, KLAMATH FALLS, OREGON
CITY PROJECT NO. OIT-270-P-13-17

VERIFY SCALES
ORIGINAL DRAWING
1" = 10' ONE INCH ON
IF NOT ONE INCH ON THIS
SHEET, ADJUST SCALES
ACCORDINGLY



C-2.4
STORM DETAILS