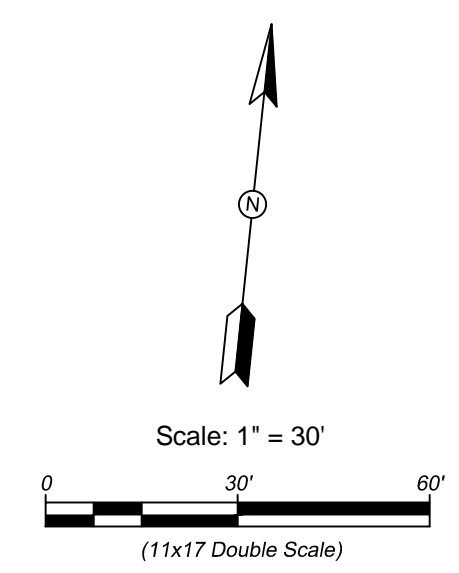


**DEMOLITION NOTES:**

- 1 REMOVE EXISTING INFELD SOD MATERIAL TO A DEPTH OF 3' (0.25) AND HAUL TO THE DESIGNATED DISPOSAL SITE ON CAMPUS, APPROX. 2 BLOCKS NORTHEAST OF THE CONSTRUCTION SITE.
- 2 THE CONTRACTOR SHALL HAND EXCAVATE TO THE TOP OF EXISTING POWER AND COMMUNICATION CONDUITS IN ASSUMED LOCATIONS AND NOTIFY THE PROJECT ENGINEER IN WRITING OF THE LOCATION AND ELEVATIONS PRIOR TO THE DEMOLITION AND CONSTRUCTION ACTIVITIES. THE EXISTING POWER AND COMMUNICATION CONDUITS SHALL BE PROTECTED THROUGHOUT ALL DEMOLITION AND CONSTRUCTION ACTIVITIES.
- 3 PROTECT EXISTING TRANSFORMER & ELECTRICAL/COMMUNICATION EQUIPMENT THROUGHOUT CONSTRUCTION.
- 4 REMOVE ALL EXISTING RUBBERIZED RUNNING TRACK AND FIELD EVENT SURFACING AND DISPOSE OF OFFSITE.
- 5 SAWCUT EXISTING ASPHALT PAVING. CONTRACTOR SHOULD ANTICIPATE DAMAGE TO THE WORK IN PROGRESS AND NOT CUT TO THE FINAL LIMIT UNTIL READY TO PAVE BACK TO THE NEAT EDGE.
- 6 REMOVE EXISTING TRACK AND FIELD EVENT ASPHALT AND CONCRETE PAVING AND DISPOSE OF OFFSITE. THE CONTRACTOR SHALL ASSUME REMOVAL AND OFFSITE DISPOSAL OF AN EXISTING CONCRETE CURB BELOW THE SURFACE OF THE TRACK ASPHALT PAVING AT THE TRACK INTERIOR AND EXTERIOR EDGES.
- 7 REMOVE EXISTING ASPHALT PAVING BETWEEN GRANDSTAND AND RUNNING TRACK AND DISPOSE OF OFFSITE. PROTECT EXISTING GRANDSTAND STRUCTURE, STAIRWAYS, AND UTILITIES IN THE AREA THROUGHOUT CONSTRUCTION.
- 8 REMOVE EXISTING CONCRETE/ASPHALT PAVING AND DISPOSE OF OFF SITE.
- 9 REMOVE EXISTING CONCRETE CURBING AND DISPOSE OF OFF SITE.
- 10 REMOVE EXISTING CATCH BASINS AND DISPOSE OF OFF SITE. CAP EXISTING DRAINLINE TO REMAIN (IF APPLICABLE). BACKFILL EXCAVATED AREAS WITH STRUCTURAL FILL TO 95% COMPACTION WITH 12 INCH MAXIMUM LIFTS.
- 11 REMOVE ALL EXISTING SUBSURFACE DRAINAGE LATERAL PERFORATED PIPING AND COLLECTOR PIPING FROM THE FIELD AREA AND DISPOSE OF OFFSITE. BACKFILL EXCAVATED AREAS WITH STRUCTURAL FILL OR EXISTING SAND OR PEA GRAVEL TO 95% COMPACTION WITH 12 INCH MAXIMUM LIFTS.
- 12 REMOVE ALL EXISTING SPRINKLER HEADS AND RISER ASSEMBLIES. CLEAN THOROUGHLY, PACKAGE, AND DELIVER TO THE OWNER ONSITE. BACKFILL EXCAVATED AREAS WITH STRUCTURAL FILL TO 95% COMPACTION WITH 12 INCH MAXIMUM LIFTS.
- 13 REMOVE EXISTING IRRIGATION VALVES AND BOXES. CLEAN THOROUGHLY, PACKAGE, AND DELIVER TO THE OWNER ONSITE. BACKFILL EXCAVATED AREAS WITH STRUCTURAL FILL TO 95% COMPACTION WITH 12 INCH MAXIMUM LIFTS.
- 14 REMOVE EXISTING DISCUS CAGE CONCRETE FOOTINGS AND SLEEVES AND DISPOSE OF OFFSITE. BACKFILL EXCAVATED AREAS WITH STRUCTURAL FILL TO 95% COMPACTION WITH 12 INCH MAXIMUM LIFTS.
- 15 REMOVE EXISTING POLE VAULT BOXES AND CONCRETE BASE AND DISPOSE OF OFF SITE.
- 16 REMOVE EXISTING SHOT PUT LANDING AREA EDGING AND DISPOSE OF OFF SITE.
- 17 REMOVE EXISTING CIDERS AND STOCKPILE ONSITE FOR RE-USE IN NEW SHOT PUT LANDING AREA.
- 18 EXISTING EXCAVATED SAND ROOT ZONE MATERIAL FROM FIELD AREA TO BE USED AS FILL FOR BACKFILLING AND RESTORATION OF THE PERIMETER AREAS
- 19 PROTECT IN PLACE EXISTING ITEM
- 20 CUT AND REMOVE EXISTING WOOD LIGHT POLE AND DISPOSE OF OFFSITE. CUT MINIMUM 2- FEET BELOW PROPOSED SUBGRADE.
- 21 REMOVE EXISTING WATER LINE AND DISPOSE OF OFFSITE.



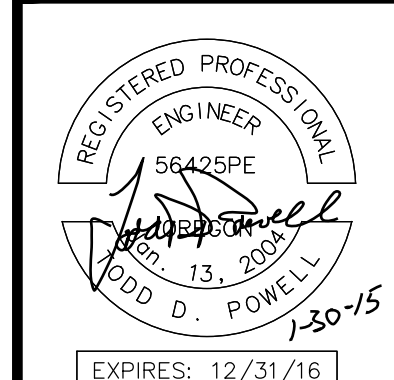
www.AuslandGroup.com  
 Ashland 541.482.0923  
 Eugene 541.345.1094  
 Grants Pass 541.476.3788  
 Medford 541.773.3387



Director Decision Date:	N.A.
First Submittal Date:	
Second Submittal Date:	
TDP, RMA	
Drawn By:	TDP
Designed By:	TDP
Checked By:	TDP, RMA
Approved:	
Rev 1	By: [Signature]
Rev 2	By: [Signature]
Rev 3	By: [Signature]
As-Built	

**OREGON TECH TRACK AND SOCCER PROJECT**  
**CONSTRUCTION DOCUMENTS**  
 MAP NO. 38-09-00, TAX LOT 4900  
 3201 CAMPUS DRIVE, KLAMATH FALLS, OREGON  
 CITY PROJECT NO. OIT-270-P-13-17

**VERIFY SCALES**  
 ORIGINAL DRAWING  
 BAR IS ONE INCH LONG  
 IF NOT ONE INCH ON THIS SHEET, ADJUST SCALES ACCORDINGLY



**C-1.1**  
 TRACK DEMO

Drawing name: W:\Projects - Current\14-0708 OIT Soccer & Track Design\Pre Development\Drawings\Working Drawings\14-0708 OIT Civil Sheets.dwg  
 Plot Date: Jan 30, 2015 - 4:28pm