



VICINITY MAP
SCALE: 1" = 800'



OREGON UTILITY
NOTIFICATION CENTER
1-800-332-2344



OSU CASCADES LITTLE KITS CHILD CARE FACILITY

JULY 2024
COB PROJECT NO. PLSR20220845
CITY OF BEND, DESCHUTES COUNTY, OREGON

OWNER:
**OREGON STATE
UNIVERSITY-CASCADES**
1500 SW CHANDLER AVENUE
BEND, OREGON 97702

SCHEDULE OF IMPROVEMENTS:

CITY OF BEND:

102 SY	LOCAL STREET IMPROVEMENT
27 SY	PUBLIC ALLEY IMPROVEMENT
94 SF	CONCRETE SIDEWALK
116 SF	CONCRETE DRIVEWAY
19 LF	CITY STANDARD CURB, 12"
2 EA	6" GATE VALVE
18 LF	6" WATER FIRE SERVICE PIPING



**OSU CASCADES
LITTLE KITS
COVER SHEET**
DESCHUTES COUNTY, OREGON

SHEET INDEX

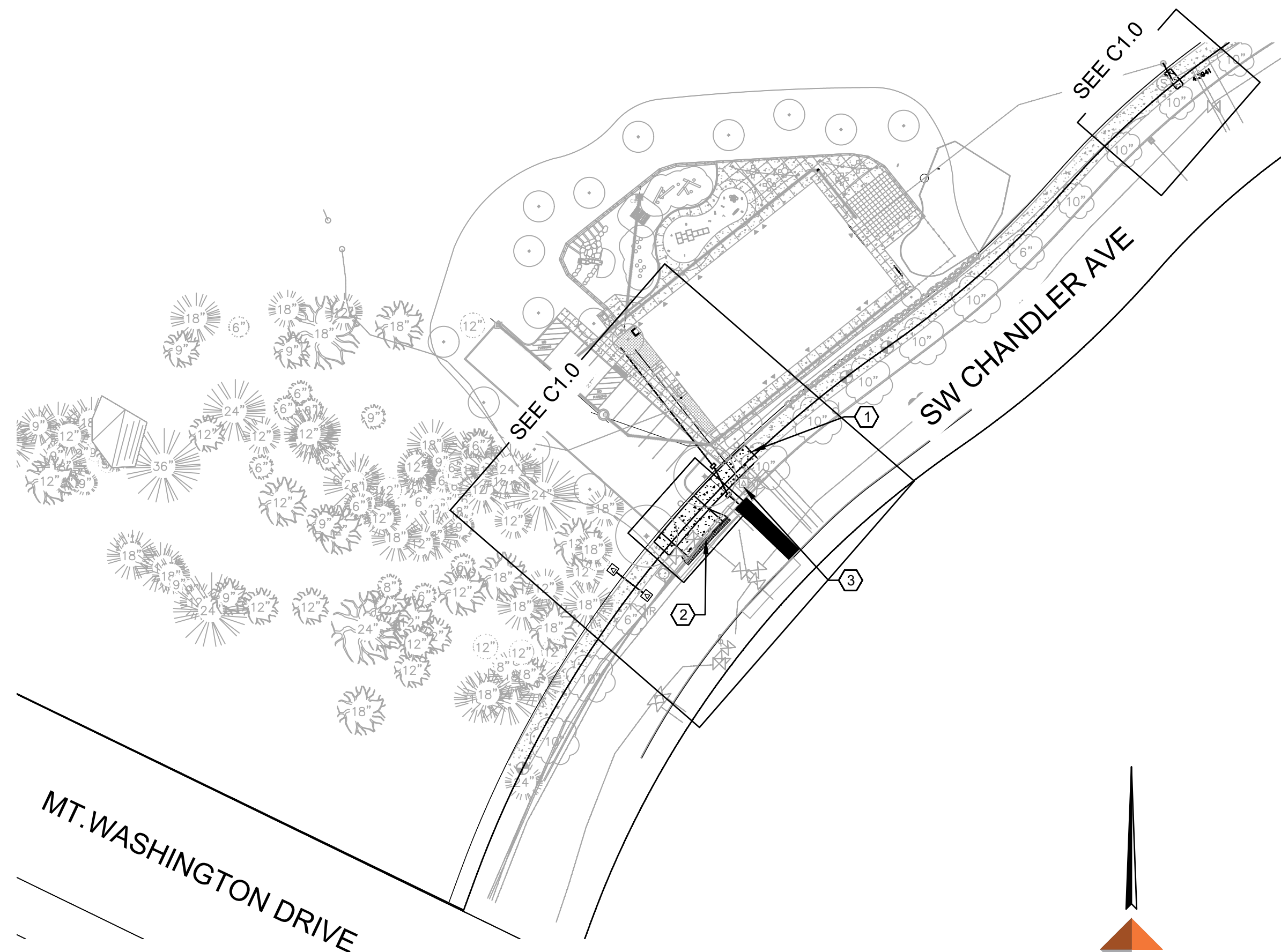
- G1.0 COVER SHEET
- G2.0 CONSTRUCTION NOTES
- G3.0 STANDARD DETAILS
- C1.0 SITE PLAN AND PROFILE
- C2.0 TRAFFIC CONTROL PLAN

DEMOLITION NOTES

1. SAWCUT, REMOVE AND DISPOSE OF EXISTING ±64 LF SIDEWALK.
2. SAWCUT, REMOVE AND DISPOSE OF EXISTING ±30.5 LF CURB.
3. PROTECT EXISTING ELECTRICAL EQUIPMENT IN PLACE.

EROSION CONTROL NOTES

1. EROSION CONTROL AND TREE PROTECTION SHALL BE IN ACCORDANCE WITH THE SITE IMPROVEMENT PERMIT ("SIMP": PRSIMP20240XXXX) TO BE CONSTRUCTED CONCURRENTLY WITH INFRASTRUCTURE. NO WORK SHALL BEGIN UNTIL PROVISIONS OF THE SIMP ARE IN PLACE AND SHALL BE MAINTAINED THROUGHOUT CONSTRUCTION.



1 SITE PLAN
G1.0 SCALE: 1"=50'



APPROVALS:

- CITY OF BEND ENGINEER: _____
NOTE: SIGNATURE DOES NOT GRANT APPROVAL TO COMMENCE CONSTRUCTION.
- BEND FIRE DEPARTMENT: _____
- PACIFIC POWER: _____
- TDS: _____
- CASCADE NATURAL GAS: _____
- LUMEN: _____

CONTROL POINT TABLE

POINT #	COCS NORTHING	COCS EASTING	DESCRIPTION
44	379696.72	3285078.54	SCRIBE X
45	379443.97	3284882.91	SCRIBE X
46	379596.50	3284961.24	SCRIBE X
47	379420.19	3284854.95	PK IN CONCRETE
48	379609.45	3285044.36	PK AND WASHER IN AC
805	379344.34	3284934.50	PK IN AC

PROJECT DATA

- APPLICANT/OWNER:**
LANDSCAPE ARCHITECT:
CAMERON MCCARTHY
160 EAST BROADWAY
EUGENE, OREGON 97401
JAY BATTLESON - JBATTLESON@CAMERONMCCARTHY.COM
- OWNER:**
OREGON STATE UNIVERSITY-CASCADES
1500 SW CHANDLER AVENUE
BEND, OREGON 97702
- PLANNER/ENGINEER:**
DOWL
963 SW SIMPSON AVE, SUITE 200
BEND, OREGON 97702
ADAM CONWAY - ACONWAY@DOWL.COM
- TRAFFIC ENGINEER:**
TRANSIGHT CONSULTING
61271 SPLENDOR LANE
BEND, OR 97702
JOE BESSMAN - JOE@TRANSIGHTCONSULTING.COM



REVISIONS:

DOWL
WWW.DOWL.COM
963 SW Simpson Ave, Suite 200
Bend, Oregon 97702
541-385-4772

DESIGNED BY: AC
DRAWN BY: RB
SCALE: VARIES
FILE: SACCS.CV.14889
DATE: 07/12/24

VERIFY SCALES
0 1" BAR EQUALS ONE INCH ON ORIGINAL DRAWING

SHEET:
G1.0

PRINF#20240XXXX



OREGON UTILITY
NOTIFICATION CENTER
1-800-332-2344

LEGEND

EXISTING	PROPOSED	PROPOSED	EXISTING
		---	---
		---	---
		---	---
		---	---
		---	---
		---	---
		---	---
		---	---
		---	---
		---	---
		---	---
		---	---
		---	---
		---	---
		---	---
		---	---
		---	---
		---	---
		---	---
		---	---
		---	---
		---	---
		---	---
		---	---
		---	---
		---	---
		---	---
		---	---
		---	---
		---	---
		---	---
		---	---
		---	---
		---	---
		---	---
		---	---
		---	---
		---	---
		---	---
		---	---
		---	---
		---	---
		---	---
		---	---
		---	---
		---	---
		---	---
		---	---
		---	---
		---	---
		---	---
		---	---
		---	---
		---	---
		---	---
		---	---
		---	---

FADED BACK FEATURES ARE EXISTING (EXCEPT FOR FOUND MONUMENTS)

ABBREVIATIONS

AC	ASPHALT CONCRETE
BL	BIKE LANE
COB	CITY OF BEND
CTL	CENTER TURN LANE
CY	CUBIC YARDS
DWG	DRAWING
EP	EDGE OF PAVEMENT
FC	FACE OF CURB (FLOWLINE)
FG	FINISHED GRADE
HMAC	HOT MIXED ASPHALT CONCRETE
ISD	INTERSECTION SIGHT DISTANCE
N/A	NOT APPLICABLE
OPT	OPTIONAL
PCC	PORTLAND CEMENT CONCRETE
PKG	PARKING
PS	PLANTER STRIP
RA	ROUNDABOUT
ROW	RIGHT OF WAY
STD	STANDARD
TC	TOP OF CURB (BACK)
TL	TRAVEL LANE
TP	TOP OF PAVEMENT
UGB	URBAN GROWTH BOUNDARY
VAR	VARIES

APPLICANT:
 JL WARD CO
 20505 MURPHY RD
 BEND, OREGON 97702

PLANNER/ENGINEER:
 DOWL
 963 SW SIMPSON AVE, SUITE 200
 BEND, OREGON 97702
 RON HAND - RHAND@DOWL.COM
 ADAM CONWAY - ACONWAY@DOWL.COM

PROPERTY DATA:
 TAX LOT: 1812160000619
 AREA: 48.12 ACRES
 ZONE: RS
 WATER: CITY OF BEND
 SEWER: CITY OF BEND
 POWER: PACIFIC POWER
 PHONE: CENTURY LINK
 NATURAL GAS: CASCADE NATURAL GAS
 SCHOOL DISTRICT: BEND-LAPINE
 FIRE: CITY OF BEND
 TOPOGRAPHY: NATIVE VEGETATION AND ROCK

THERE ARE NO KNOWN, NATURAL HAZARDS OR LOCALLY OR FEDERALLY DESIGNATED HISTORIC AND CULTURAL RESOURCES.

THRUST BLOCK BEARING AREA CALCULATION PER OREGON STD DWG RD250

A=THRUST BLOCK BEARING AREA
 T=THRUST AT FITTING IN POUNDS (FROM TABLE A OF OREGON STD DWG RD250)
 B=SOIL BEARING CAPACITY (FROM TABLE B OF RD250)
 P₀=DESIGN TEST PRESSURE (150 PSI)
 P₁=TABLE PRESSURE (FROM TABLE A OF RD250)

$A = (T/B)(P_0/P_1)$
 $A = (3035/3000)(150/250)$
 A=0.607

1
 G2.0 THRUST BLOCK BEARING AREA CALCULATION
 NTS



OSU CASCADES
 LITTLE KITS
 COVER SHEET
 DESCHUTES COUNTY, OREGON



REVISIONS:

NO.	DATE	DESCRIPTION

DOWL
 WWW.DOWL.COM
 963 SW Simpson, #200
 Bend, Oregon 97702
 541-385-4772

DESIGNED BY: AC
 DRAWN BY: RB
 SCALE: VARIES
 FILE: SA_CSC.CV.14890
 DATE: 07/12/24

VERIFY SCALES
 0 1" BAR EQUALS ONE INCH ON ORIGINAL DRAWING

SHEET:
G2.0

PRINF#20240XXXX



OREGON UTILITY
 NOTIFICATION CENTER
 1-800-332-2344



EXPIRES 12-31-25

OSU CASCADES LITTLE KITS STANDARD DETAILS

DESCHUTES COUNTY, OREGON



CITY OF BEND

REVISIONS:

DESIGNED BY: AC
DRAWN BY: RE
SCALE: VARIES
FILE: SA-CSC-CV-1-16890

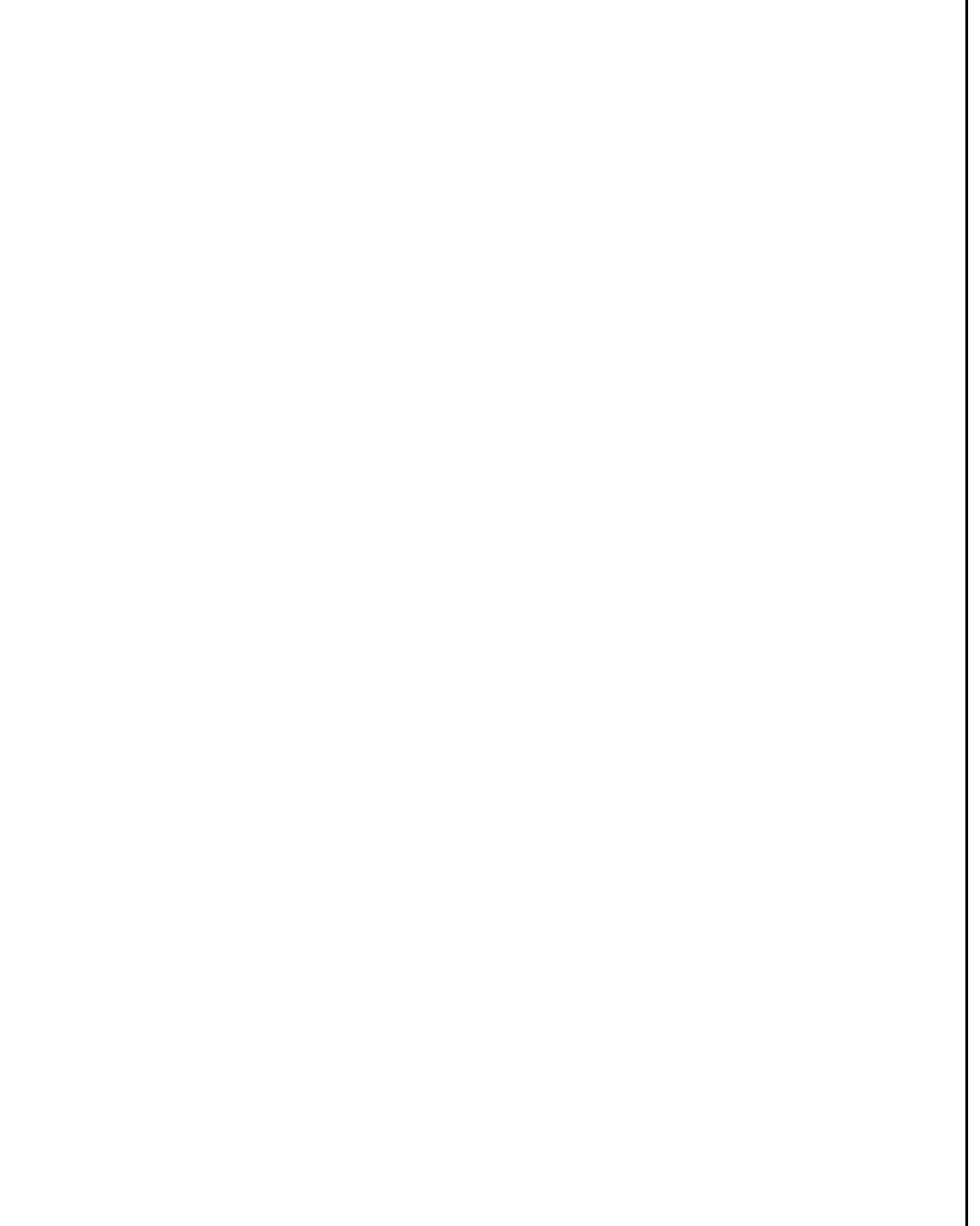
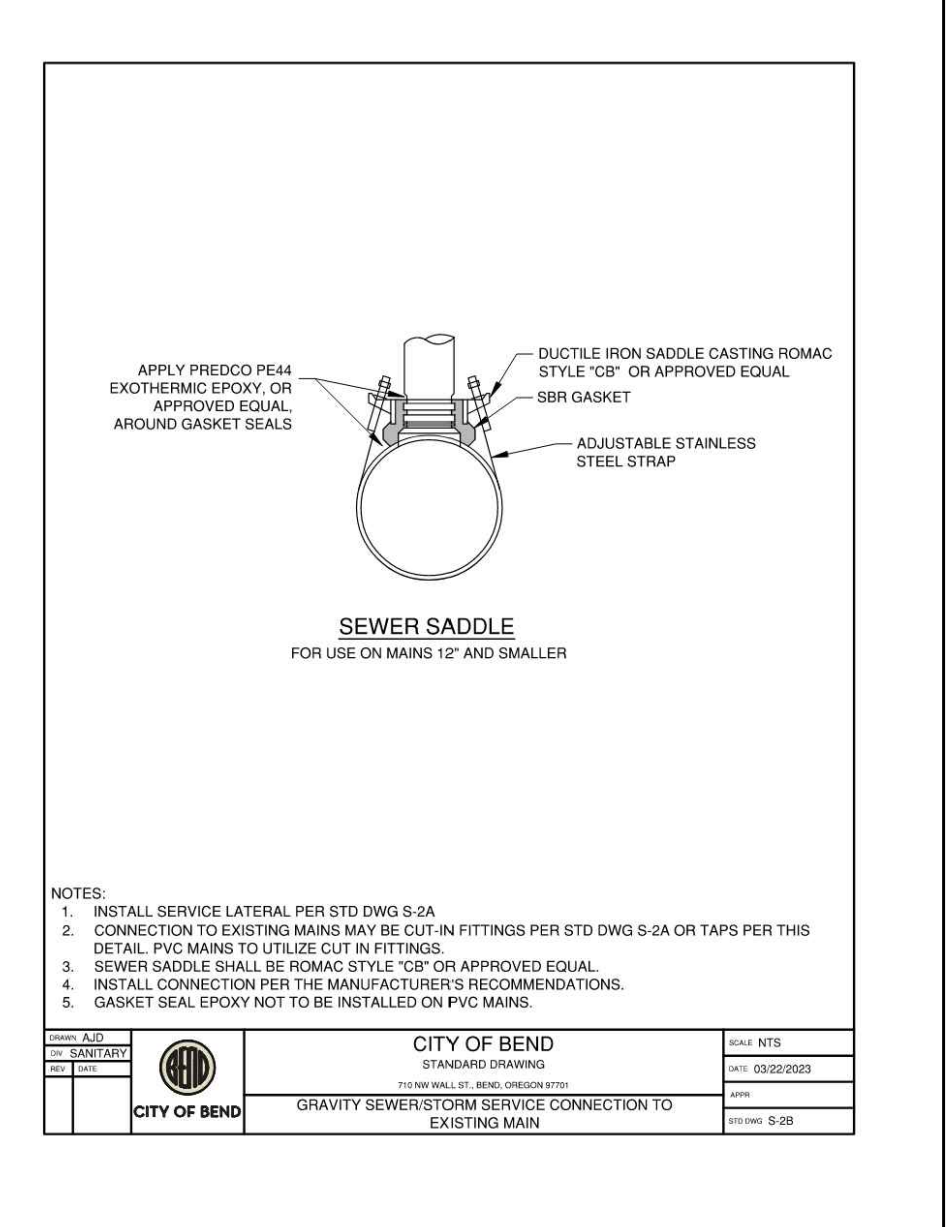
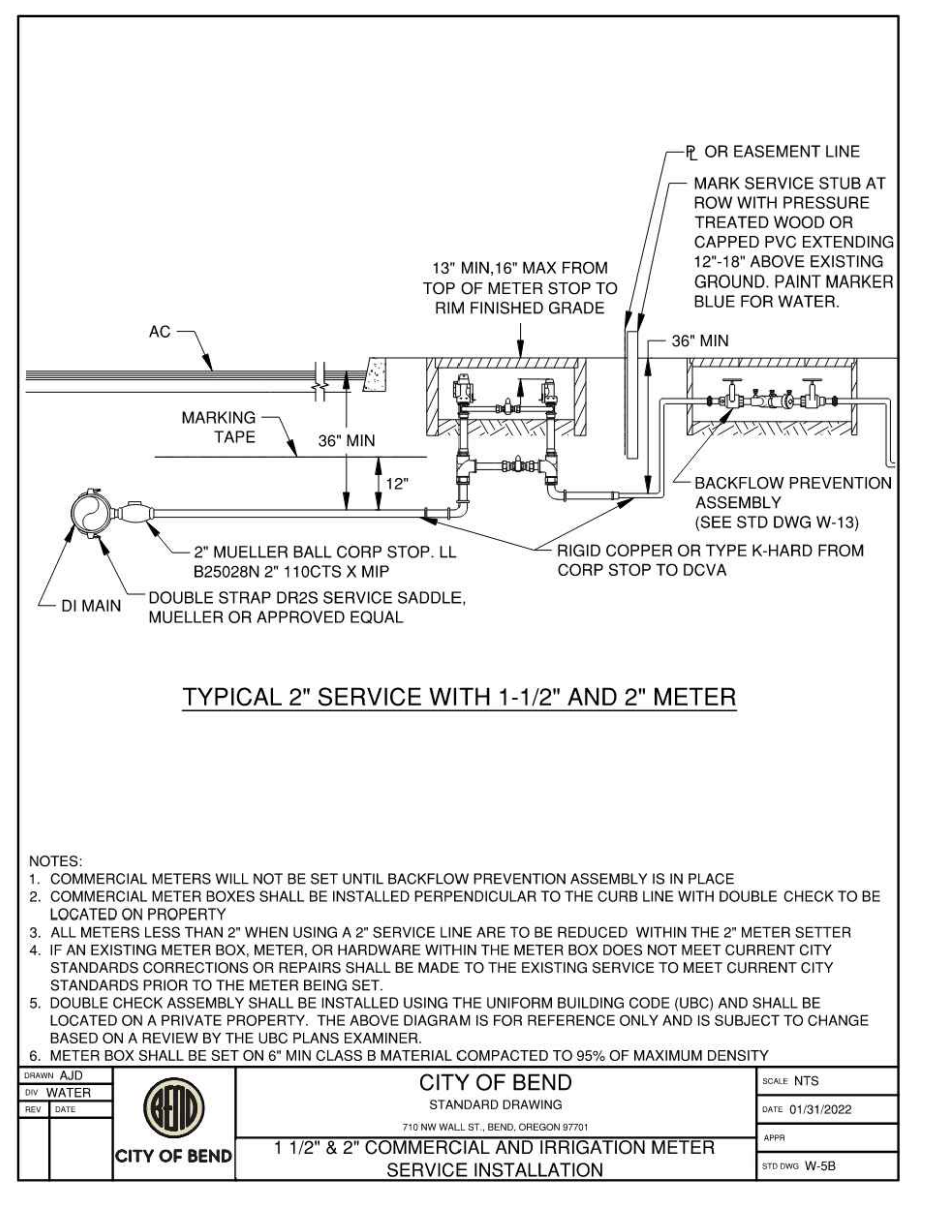
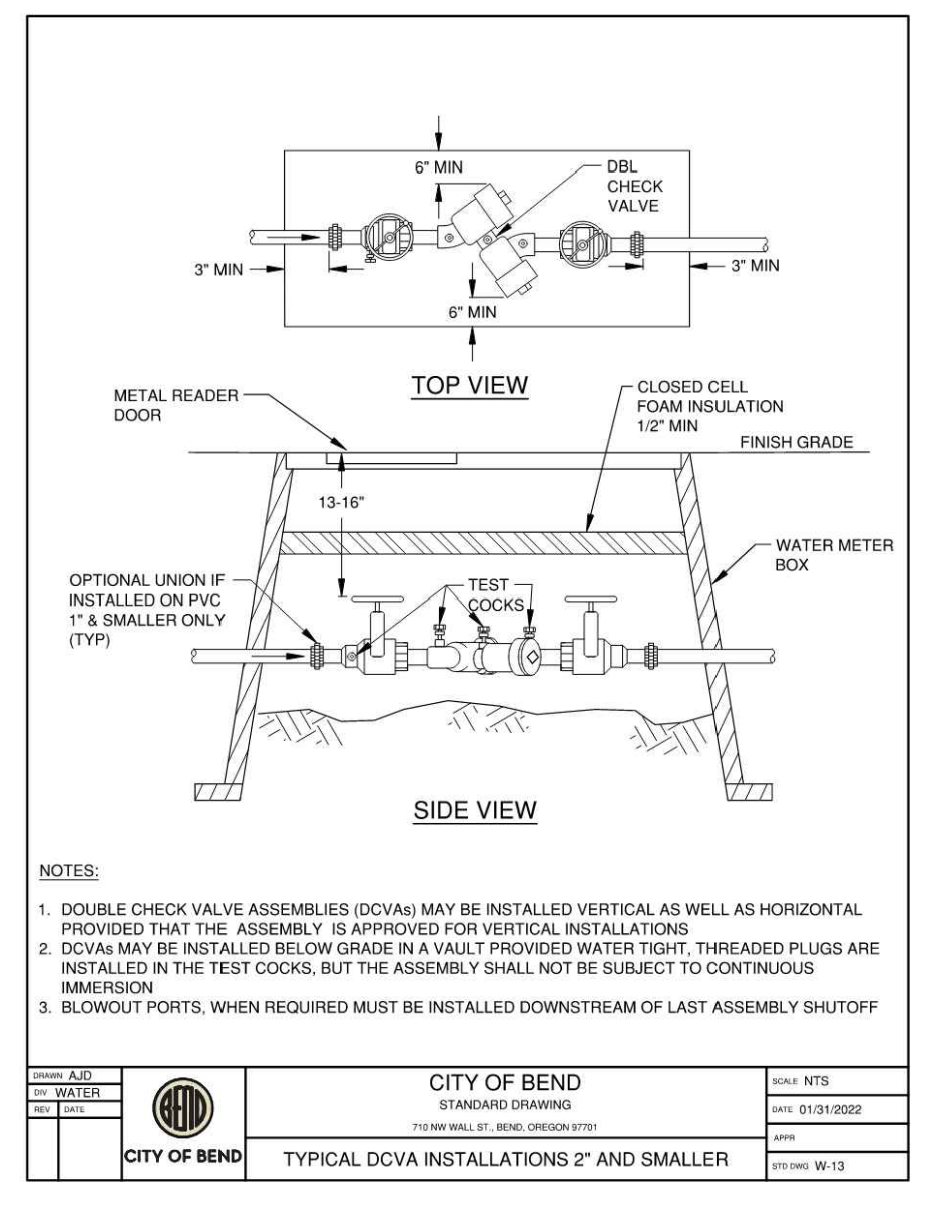
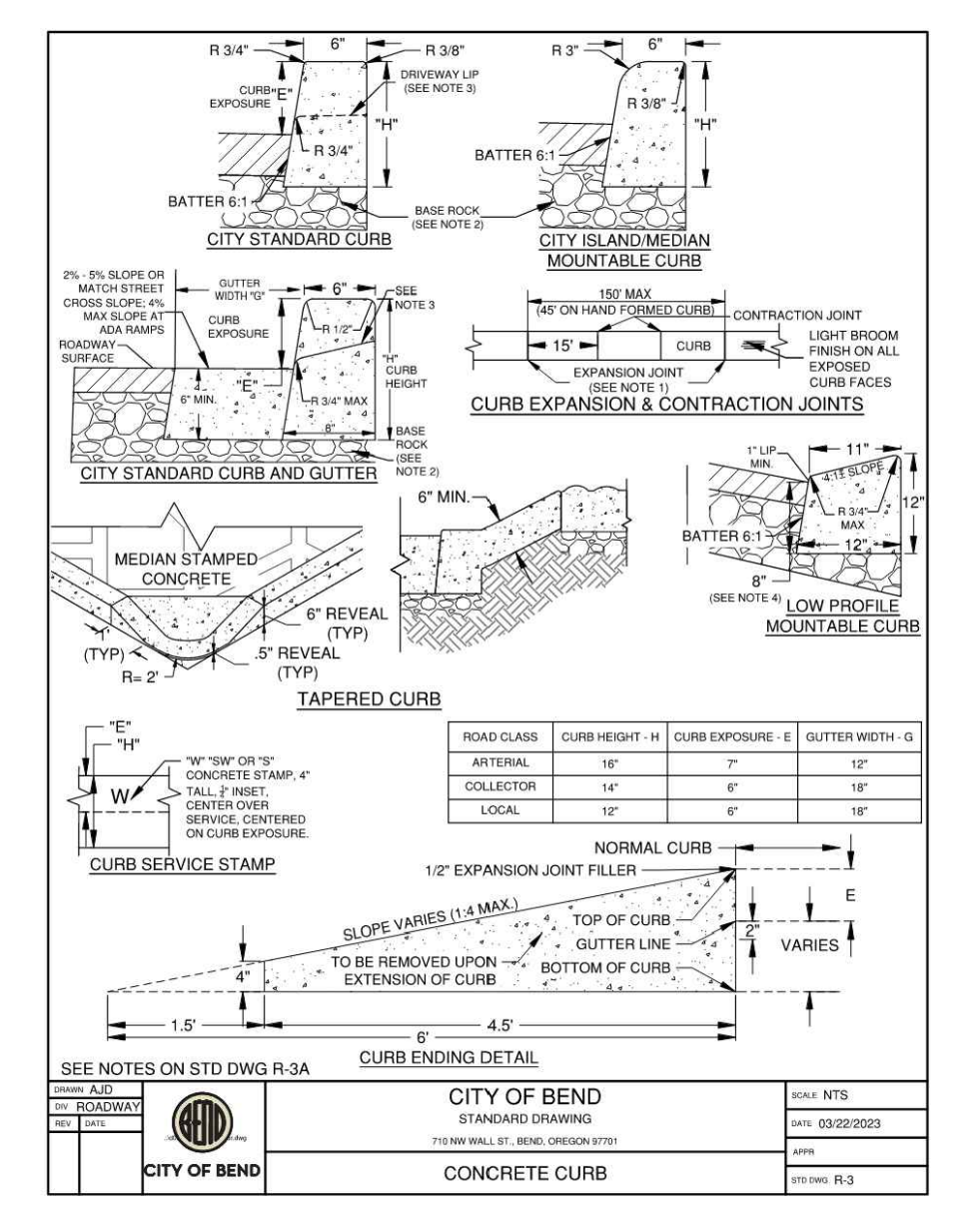
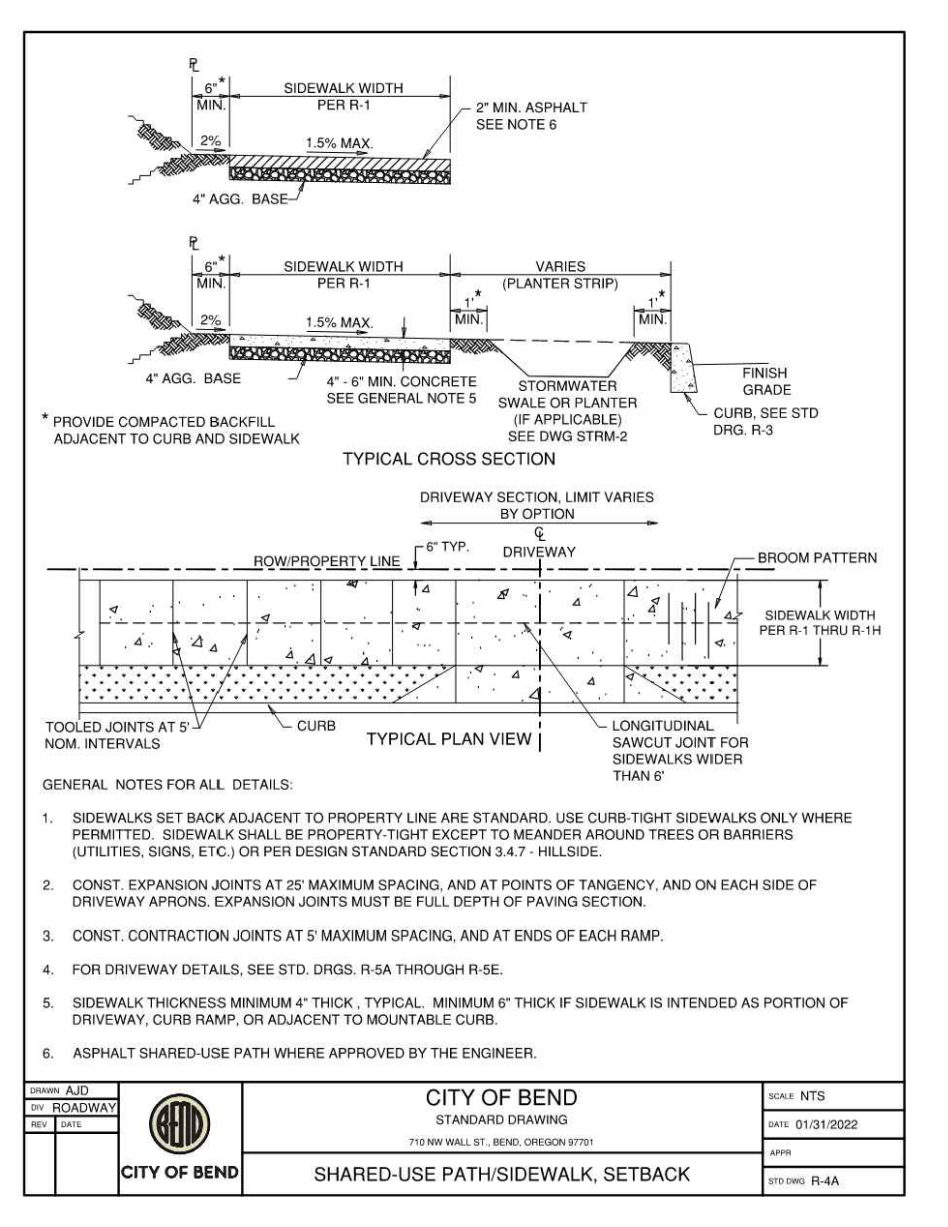
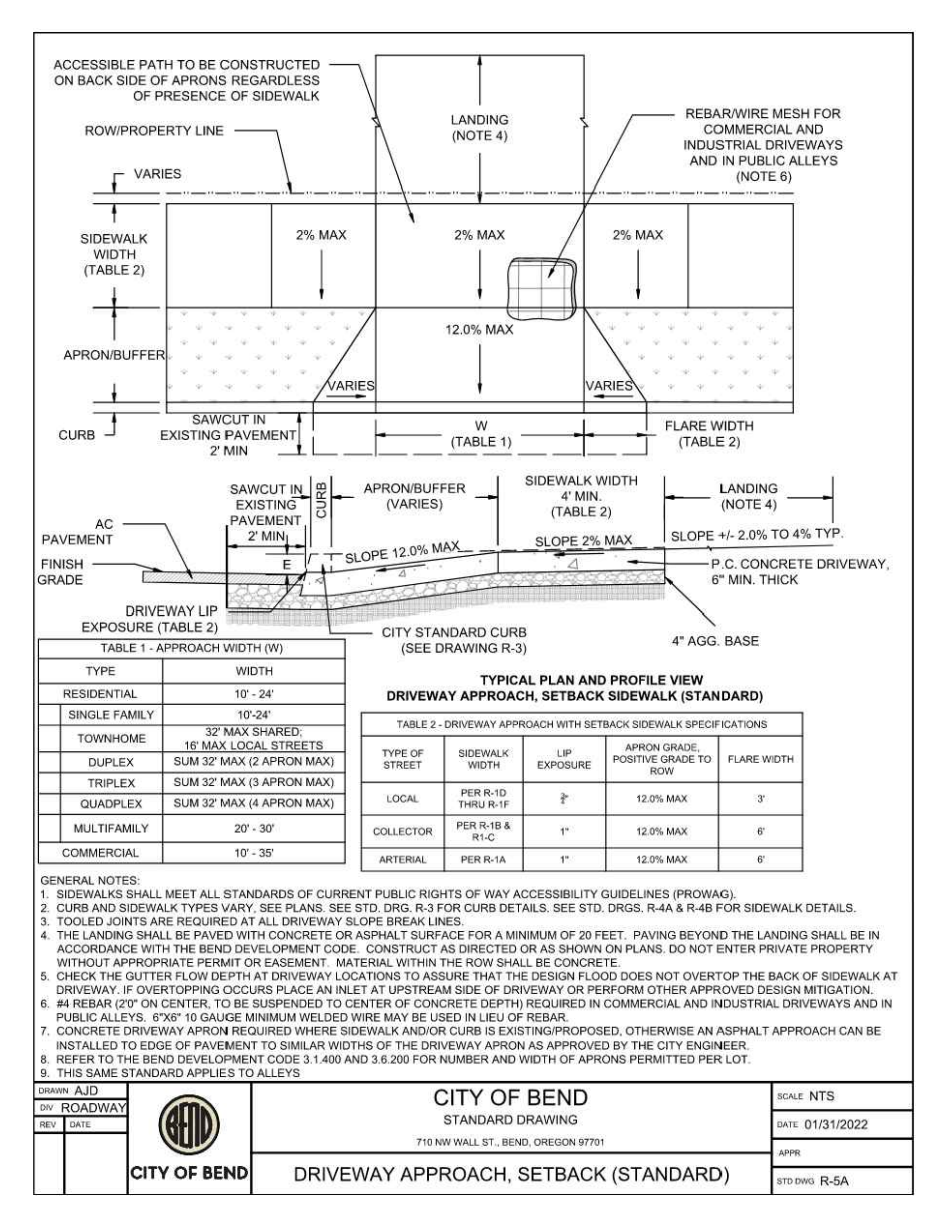
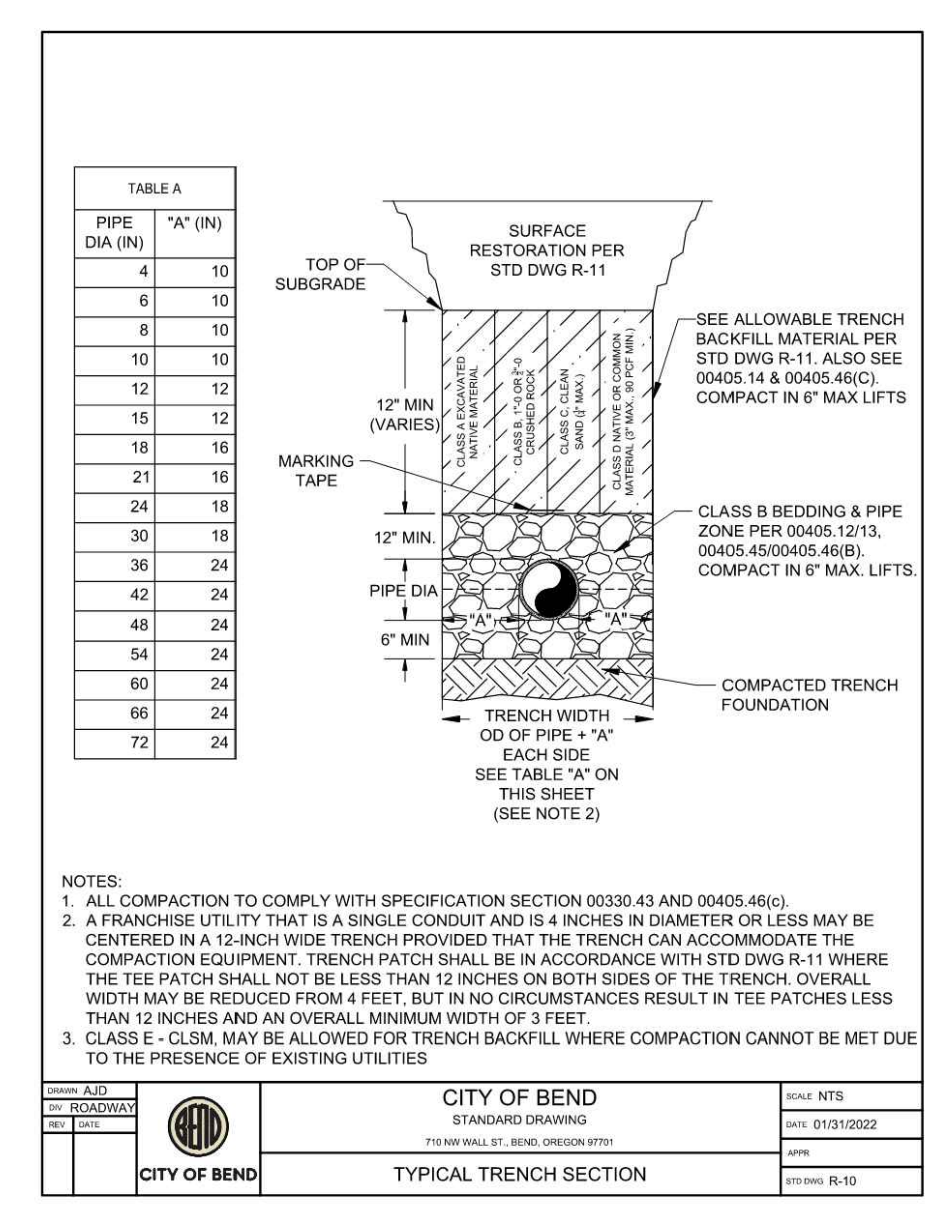
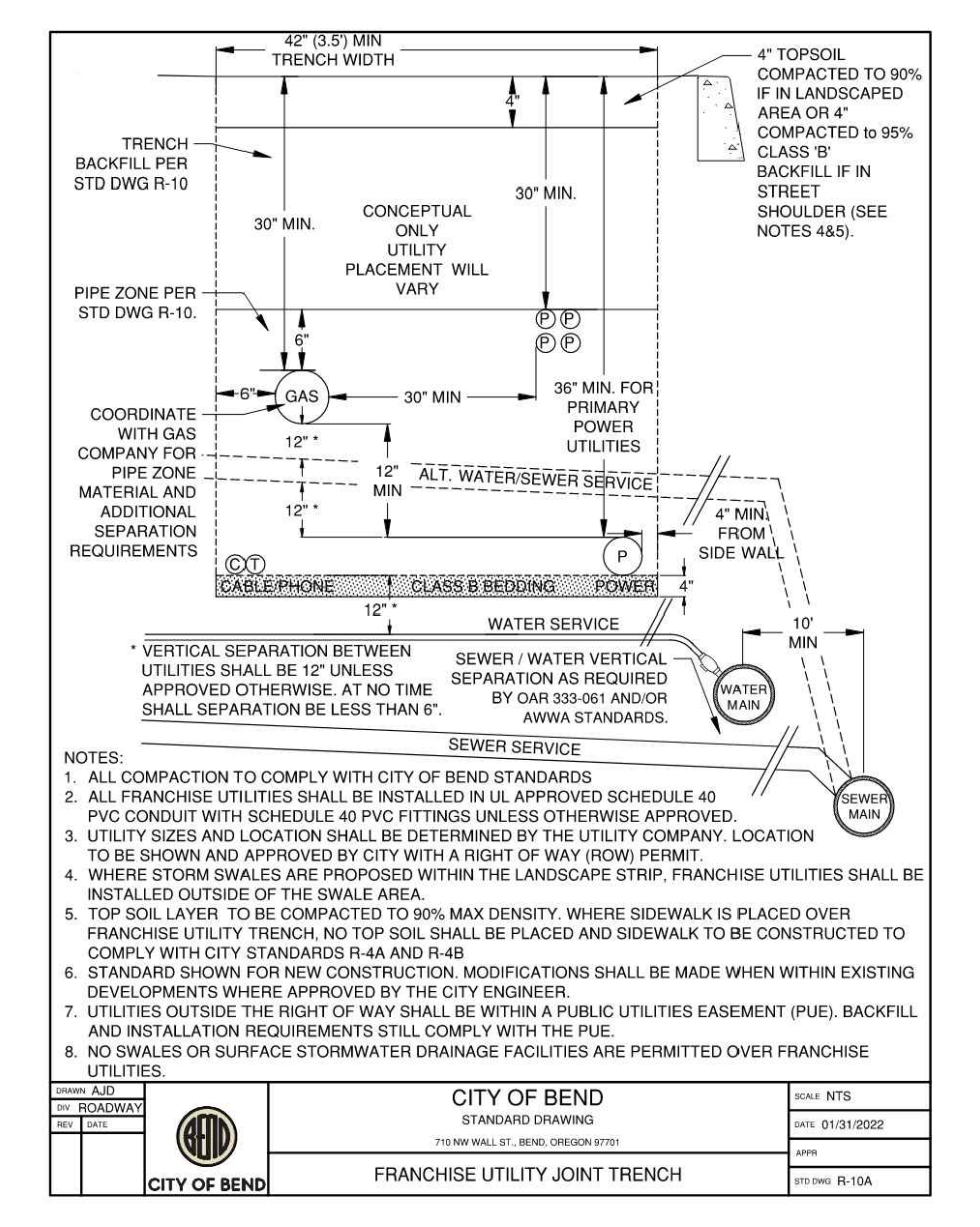
983 SW Simpson, #200
Bend, Oregon 97702
541-385-4772

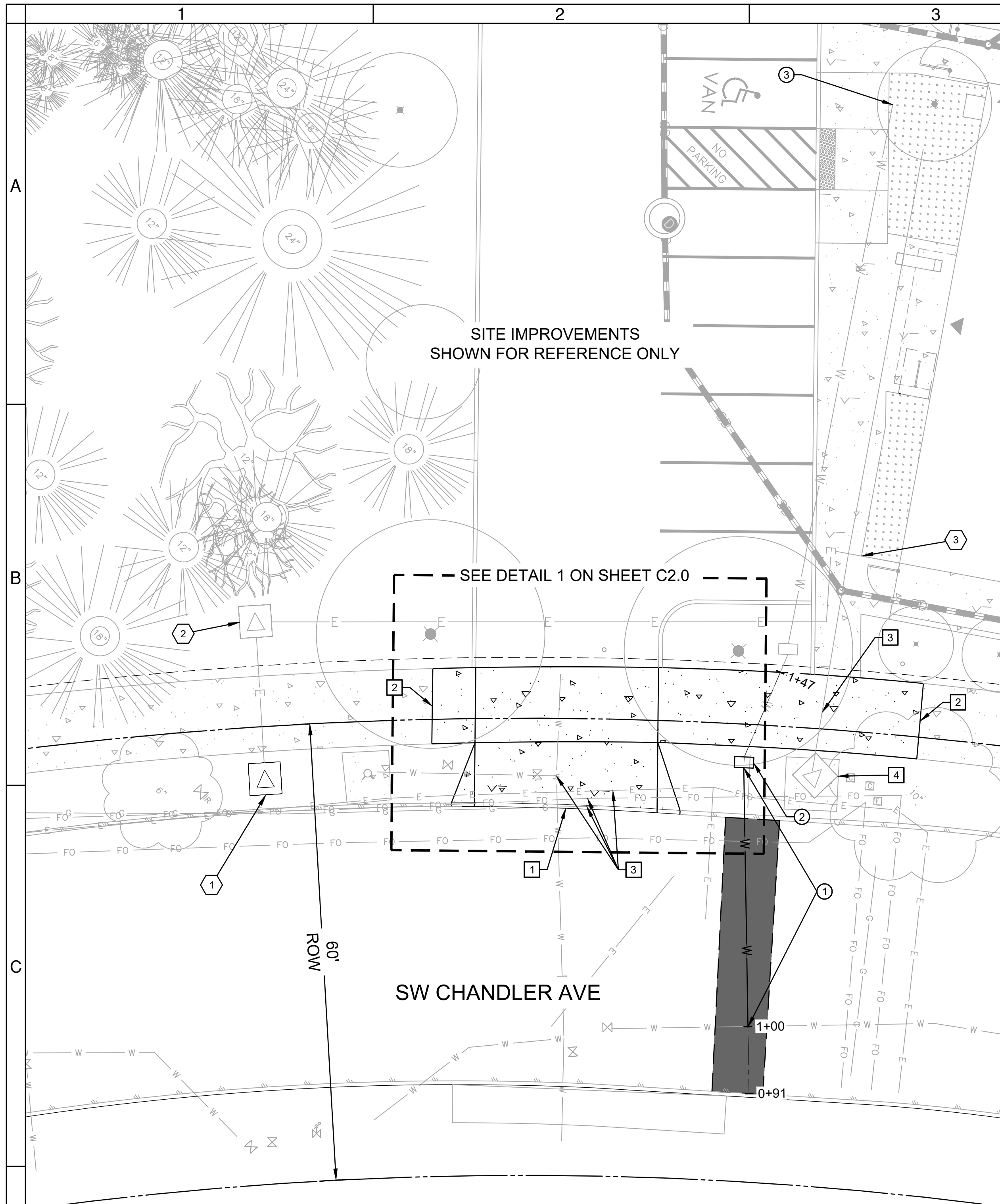
DATE: 07/12/24

VERIFY SCALES
0 1"
BAR EQUALS ONE INCH
ON ORIGINAL DRAWING

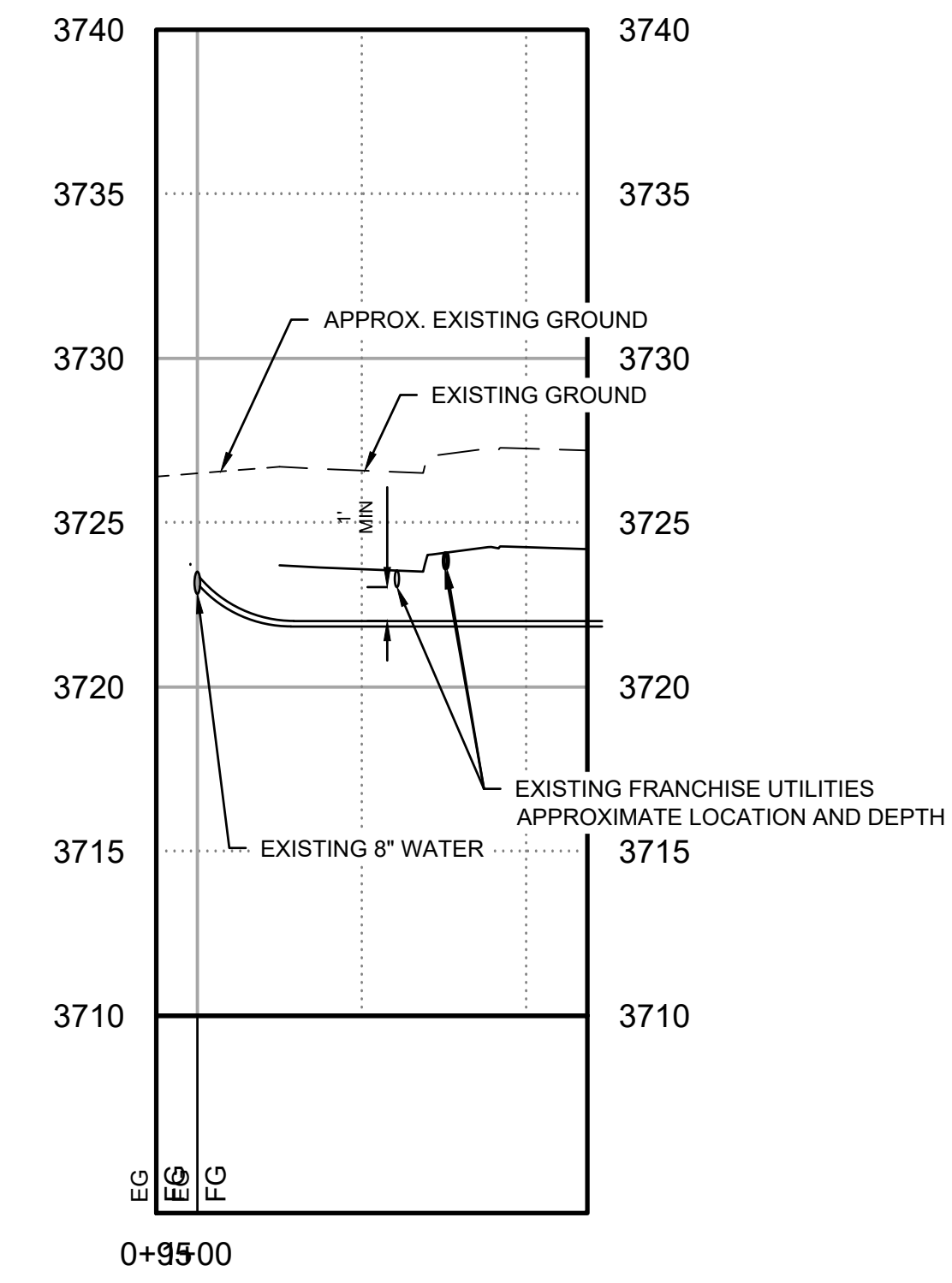
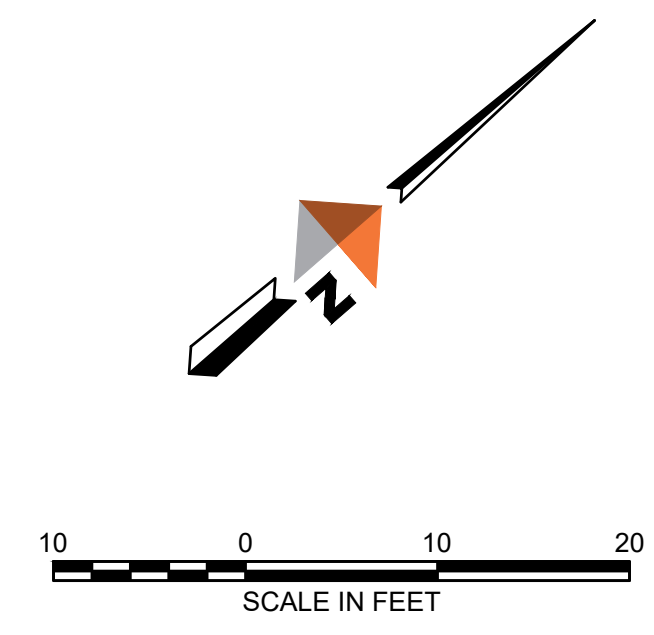
G3.0

PRIN#20240XXXX





1 SITE PLAN
C1.0 SCALE: 1"=10'



3 WATER SERVICE PROFILE
C1.0 SCALE: H:1"=10' V:1"=5'

GENERAL NOTES

- SEE LANDSCAPE PLAN SHEETS L0.1 AND L0.2 FOR ADDITIONAL SITE DETAILS

ELECTRIC CONSTRUCTION NOTES

- PROPOSED POWER CABINET
- PROPOSED 75KVA PM TRANSFORMER
- PROPOSED ELECTRIC SERVICE METER LOCATION

WATER CONSTRUCTION NOTES

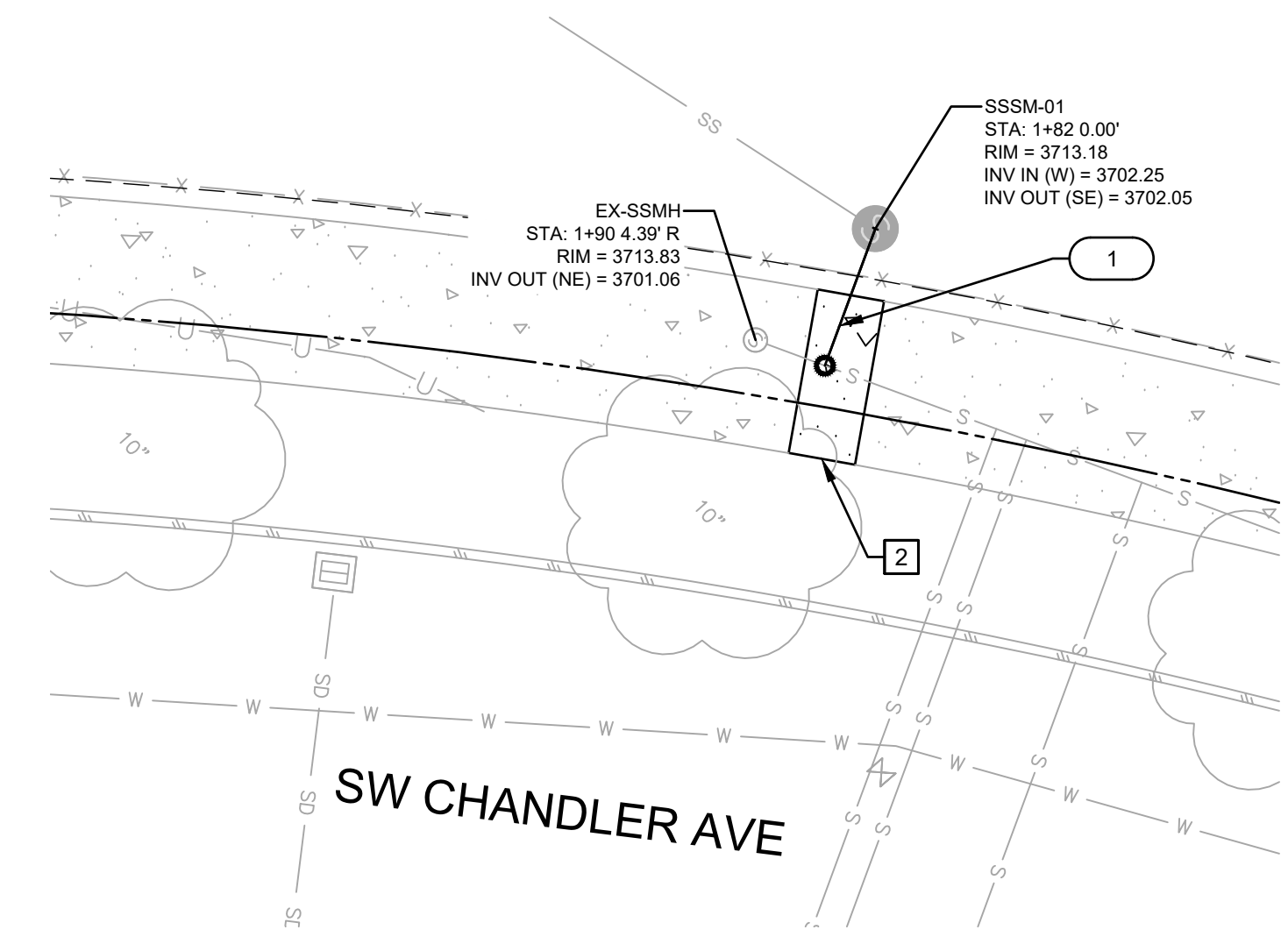
- CONNECT 2" COMMERCIAL WATER SERVICE (1 1/2" METER) TO EXISTING MAIN WITH TAPPING SLEEVE AND SADDLE PER COB STD DWG. W-5B. INSTALL THRUST BLOCK BEHIND TAP PER OREGON STD DWG R250 (SEE 2/G2.0)
- INSTALL 2" DOUBLE CHECK VALVE ASSEMBLY PER COB STD DWG W-13.
- EXTEND 2" WATER SERVICE TO WITHIN 5' OF BUILDING. TO BE CONSTRUCTED UNDER SEPARATE PERMIT

SITE CONSTRUCTION NOTES

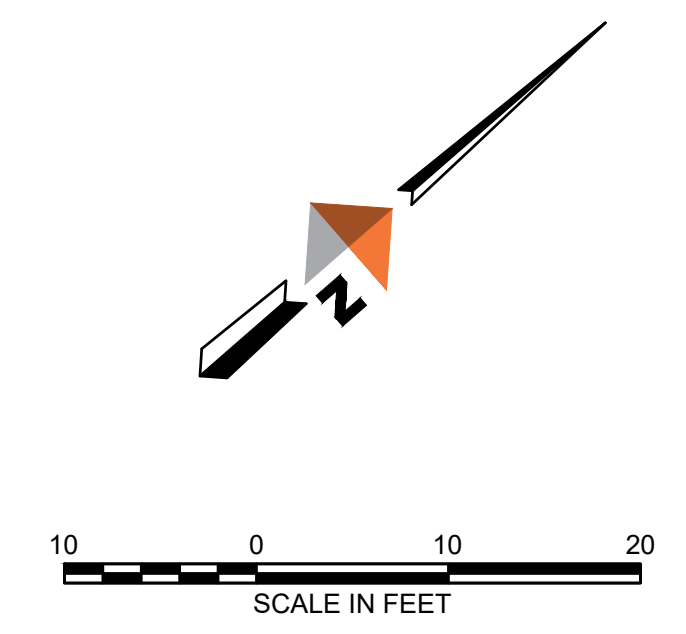
- INSTALL DRIVEWAY APPROACH PER COB STD DWG R-5A.
- INSTALL SIDEWALK PER COB STD DWG R-4A (5' MINIMUM WIDTH).
- PROTECT EXISTING UTILITIES. CONTRACTOR TO POTHOLE PRIOR TO CONSTRUCTION AND NOTIFY ENGINEER OF ANY CONFLICTS.
- PROTECT EXISTING ELECTRICAL EQUIPMENT.

SANITARY SEWER CONSTRUCTION NOTES

- INSTALL SANITARY SEWER SERVICE TO EXISTING SEWER MAIN PER COB STD DWG S-2B.
- INSTALL SEWER SAMPLING MANHOLE PER COB STD DWG S-15.

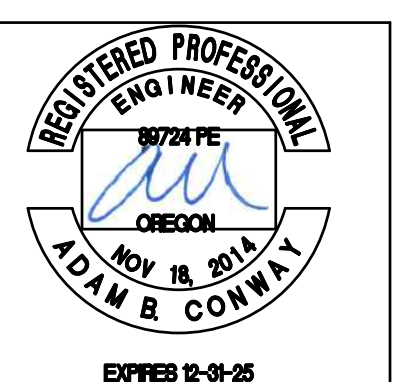


2 SITE PLAN
C1.0 SCALE: 1"=10'



POTENTIAL UNDERGROUND FACILITY OWNERS
"ONE CALL"
UTILITY NOTIFICATION CENTER
1-800-332-2344

ATTENTION:
OREGON LAW REQUIRES YOU TO FOLLOW RULES ADOPTED BY THE OREGON UTILITY NOTIFICATION CENTER. THOSE RULES ARE SET FORTH IN OAR 952-001-0010 THROUGH OAR 952-001-0090. YOU MAY OBTAIN COPIES OF THE RULES BY CALLING THE CENTER.
(NOTE: THE TELEPHONE NUMBER FOR THE OREGON UTILITY NOTIFICATION CENTER IS 1-800-332-2344 or 811).



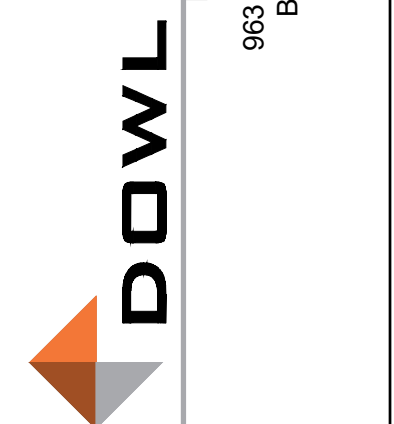
**OSU CASCADES
LITTLE KITS
SITE PLAN AND PROFILE**
DESCHUTES COUNTY, OREGON



REVISIONS:

DESIGNED BY: AC
DRAWN BY: RB
SCALE: VARIES
FILE: SC_CS_C1.1-1880

WWW.DOWL.COM
983 SW Simpson #200
Bend, Oregon 97702
541-385-4772

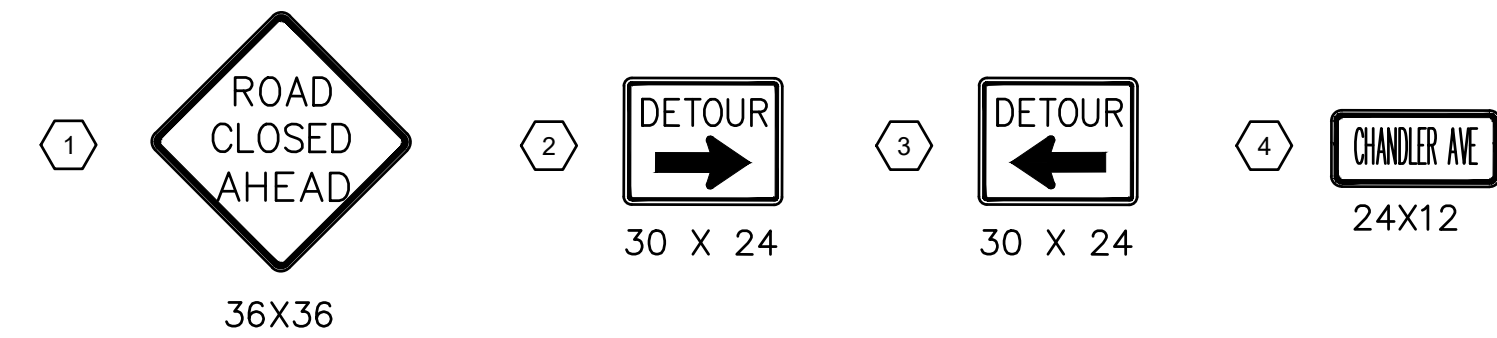


DATE: 7/15/2024

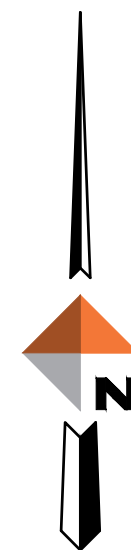
VERIFY SCALES
0 1"
BAR EQUALS ONE INCH ON ORIGINAL DRAWING

SHEET:
C1.0

PRIN#20240XXXX

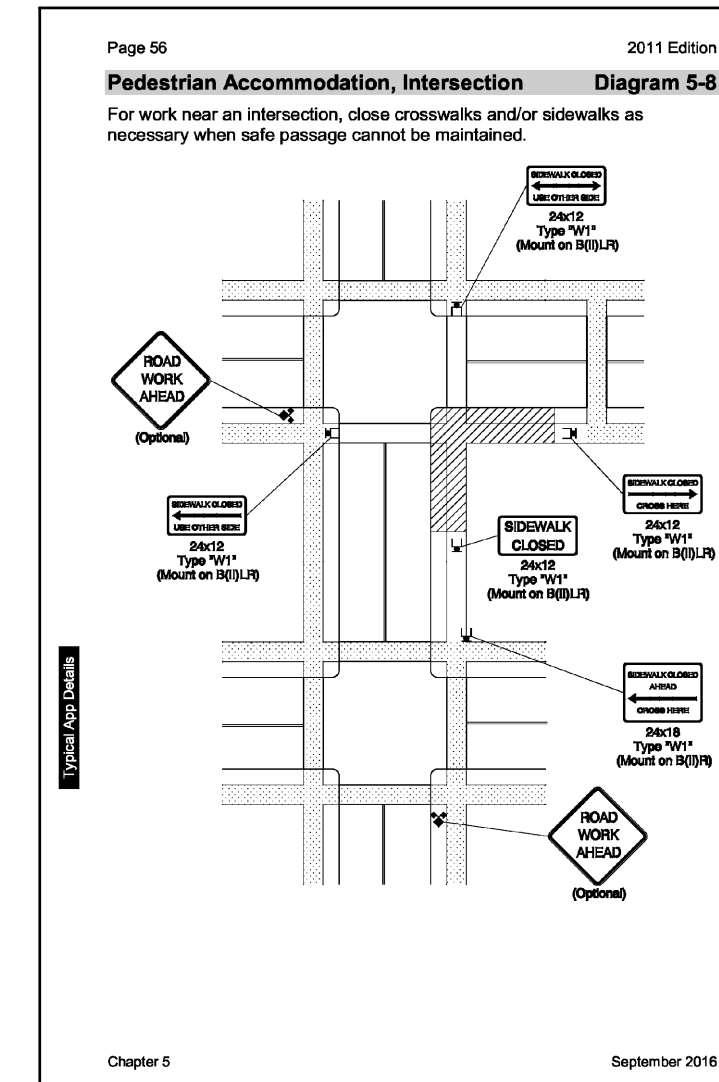


TRAFFIC CONTROL PLAN
N.T.S.



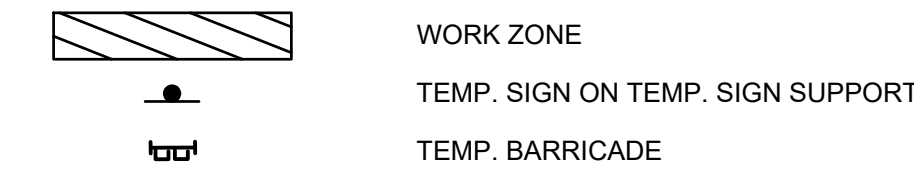
TRAFFIC CONTROL NOTES #

1. PROVIDE PEDESTRIAN ACCOMMODATION SIGNAGE IN ACCORDANCE WITH OREGON TEMPORARY TRAFFIC CONTROL HANDBOOK (OTTCH) DIAGRAM 5-8, SEE 1/C4.0.
2. INSTALL ROAD CLOSED SIGN MOUNTED ON TYPE III BARRICADES



1 OTTCH DIAGRAM 5-8
C4.0 NTS

LEGEND



ATTENTION: OREGON LAW REQUIRES YOU TO FOLLOW RULES ADOPTED BY THE OREGON UTILITY NOTIFICATION CENTER. THOSE RULES ARE SET FORTH IN OAR 952-001-0010 THROUGH OAR 952-001-0090, YOU MAY OBTAIN COPIES OF THE RULES BY CALLING THE CENTER.
(NOTE: THE TELEPHONE NUMBER FOR THE OREGON UTILITY NOTIFICATION CENTER IS 1-800-332-2344 OR 811).

POTENTIAL UNDERGROUND FACILITY OWNERS
"ONE CALL"
UTILITY NOTIFICATION CENTER
1-800-332-2344

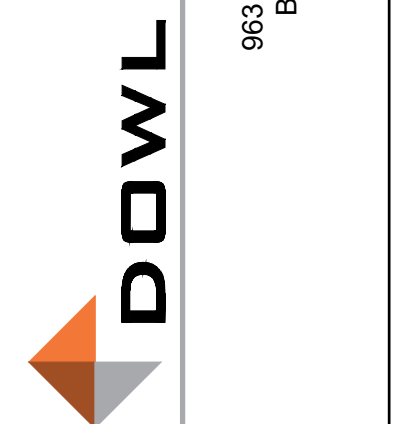


OSU CASCADES
LITTLE KITS
TRAFFIC CONTROL PLAN
DESCHUTES COUNTY, OREGON



REVISIONS:

DESIGNED BY: AC
DRAWN BY: RB
SCALE: VARIES
FILE: SC_CS_CU-14880



DATE: 07/12/24

VERIFY SCALES
0 1"
BAR EQUALS ONE INCH ON ORIGINAL DRAWING

SHEET:
C2.0

PRINF#20240XXXX