



Oregon State University

SEWER RENEWALS FY25 CONSTRUCTION SERVICES

REQUEST FOR PROPOSAL (RFP) #2024-015876

ADDENDUM NO. 2

ISSUE DATE: July 19, 2024

CONTRACT ADMINISTRATOR:

Matt Hausman, Construction Contracts Officer

Construction Contracts Administration

Email: ConstructionContracts@oregonstate.edu

This Addendum is hereby issued to inform you of revisions and or clarifications to the above-referenced Solicitation and/or the Contract Documents for the Project, to the extent they have been modified herein. Any conflict or inconsistency between this Addendum and the Solicitation Document or any previous addenda will be resolved in favor of this Addendum. Proposals shall conform to this Addendum. Unless specifically changed by this Addendum, all other requirements, terms and conditions of the Solicitation Document and or Contract Documents, and any previous addenda, remain unchanged and can be modified only in writing by OSU. The following changes are hereby made:

QUESTION/ANSWER:

Item 1 Q: Is there a count of the manholes that need to be replaced aside from the new flat top and riser in CIP 1-8?

A: After thinking about this more, we have elected to preserve & protect all existing manholes, less the flat top and riser for CIP 1-8. Instead, we would like the interior joints and penetrations of all existing MH's cleaned and resealed with grout.

Item 2 Q: What is the depth of the pipe and manholes, and will there be an addendum with this information?

A: Included with this addendum is a marked-up Site Plan identifying depths, or approximate depths. Also included is a utility plan for the Jefferson Street Building that identifies some roof drain downspout connections.

Item 3 Q: The RFP does not address if the Bid Form is included in the page count or not. With the Proposal only being 10 pages max, it would be nice if the Bid Form was not part of the page count. Please clarify.

A: The Bid Form will not count towards the 10-page limit.

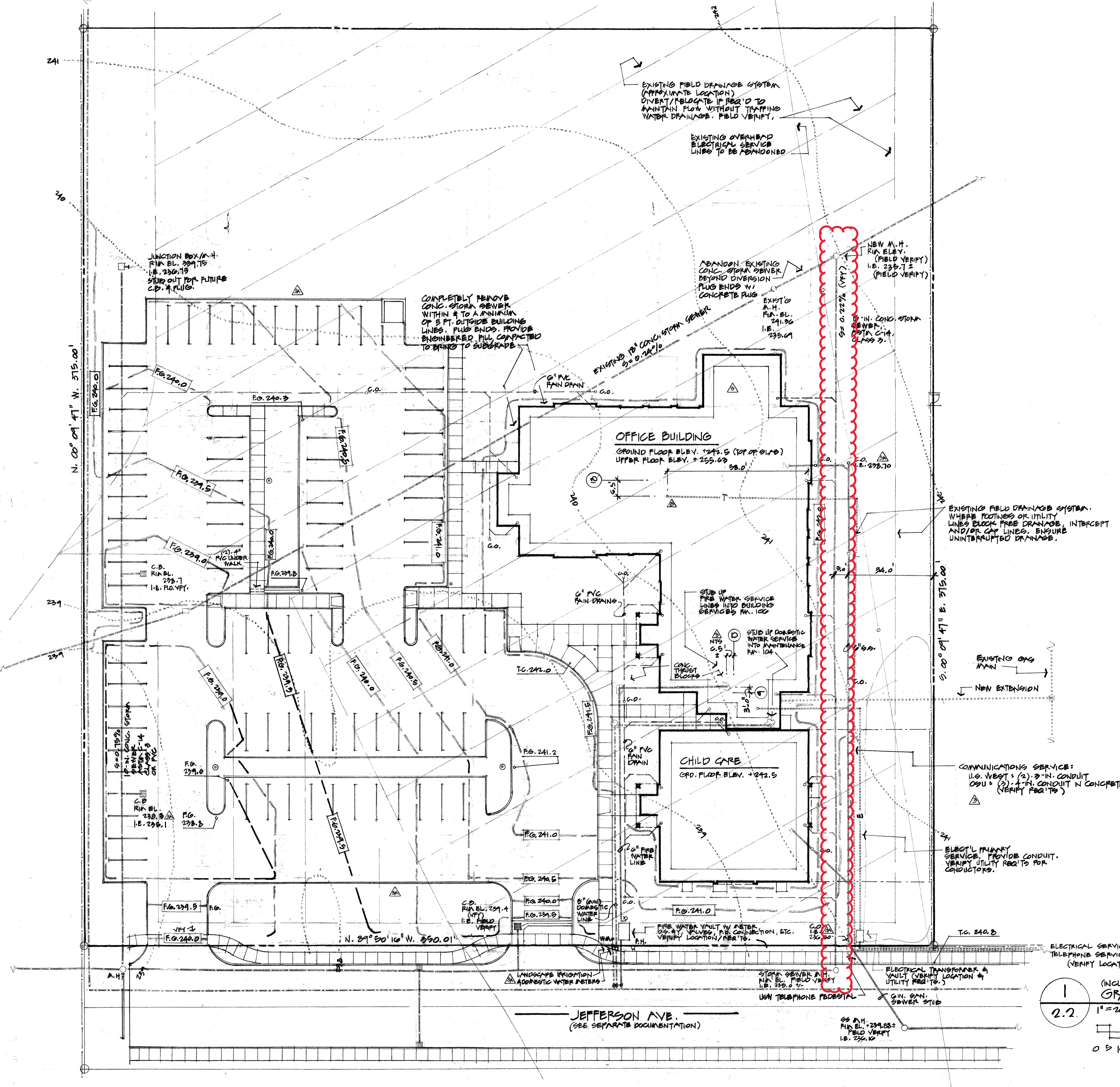
Item 4 Q: Location CIP 1-8 calls for the spot repair and manhole cone removal and repair with flat top. Is there any channel modifications or flow improvement work inside of the structure anticipated?

A: At the upstream manhole for CIP 1-8, there is some built up grout on the downstream main connection that catches debris. The grout is to be removed and the channel rehabilitated.

END OF ADDENDUM NO. 2

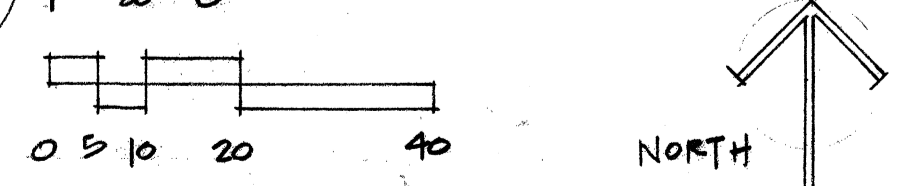
LEGEND:

- GAS LINE. TRENCHING & BACKFILL FOR NEW GAS LINE INSTALLATION BY GAS UTILITY.
- T--- TELEPHONE & CABLE TV LINES. PROVIDE MIN. (2) 3"-IN. CONDUIT, TRENCHING & BACKFILL FOR CABLE INSTALLATION BY UTILITIES.
- E--- ELECTRICAL SERVICE LINES. PROVIDE CONDUIT, TRENCHING & BACKFILL FOR CONDUCTOR INSTALLATION BY UTILITIES.
- S--- SANITARY WASTE LINES. SET AS DEEPLY AS PRACTICABLE TO ACCOMMODATE FUTURE EXPANSION TO NORTH & WEST.
- DW--- DOMESTIC WATER SERVICE LINE SIZED FOR CURRENT USE, PLUS LANDSCAPE IRRIGATION SYSTEM, PLUS FUTURE EXPANSION.
- FW--- FIRE WATER SERVICE LINE. SIZED FOR CURRENT SYSTEM, PLUS FUTURE EXPANSION AREA (MIN. 6"-IN. DIA.) SEE NOTES FOR LOCATION. SEE SPECIFICATIONS FOR OTHER REQ'TS.
- CONCRETE VAULT. SEE NOTES. VERIFY SIZE & CONFIGURATION FOR SPECIFIC USE.
- W.M. WATER METER & VAULT. VERIFY REQ'TS. W/ WATER UTILITY & USE ANTICIPATED. SIZE FOR CURRENT USE.
- S=0.12%--- EXISTING CONCRETE STORM SEWER W/ SLOPE INDICATED.
- S=0.14%--- NEW CONCRETE STORM SEWER, ASTM C-14, GRADE 3, W/ SLOPE INDICATED. (MC PERMITTED AT CATCH BASIN DRAIN LINES).
- E--- EXISTING FIELD DRAINAGE LINES. (NEW INTERCEPT LINES, IF REQ'D TO MATCH MATERIALS & INSTALLATION, OF APPROVED).
- R--- RAIN DRAIN LINES FROM RAIN DRAIN LEADERS/ROOF DRAINING. MIN. 6"-IN. MC.
- C.O.--- CLEAN-OUT
- A.H. ANHOLE WITH FIN ELEVATION (FIELD VERIFY) & INVERT ELEVATION.
- C.B. U.S.C. APPROVED TYPE CATCH BASIN/AREA DRAIN WITH FIN ELEVATION (FIELD VERIFY) & INVERT ELEVATION. UNLESS NO INVERT ELEVATION IS INDICATED, LOCATE LINE AS DEEPLY AS IS PRACTICABLE, WITH 1.0% SLOPE TO OUTLET, OR AS APPROVED.
- G.O.--- EXISTING GRADES
- R.G.--- REVISED GRADES
- F.G.--- FINISH GRADE ELEVATION
- S.G.--- FINISH GRADE SPOT ELEVATION
- T.C.--- TOP OF CURB SLOE ELEVATION



ELECTRICAL SERVICE (P.P. & L)
TELEPHONE SERVICE (U.S. WEST COMMUNICATIONS)
(VERIFY LOCATIONS/REQUIREMENTS)

1 (INCLUDING PHASE 2)
2.2 GRADING & UTILITIES PLAN



- ▲ AUGUST 10, 1990
- ▲ AUGUST 4, 1990
- ▲ JULY 30, 1990
- PARKING LOT, APPROACHES, ETC.
- JUN 25 1989

