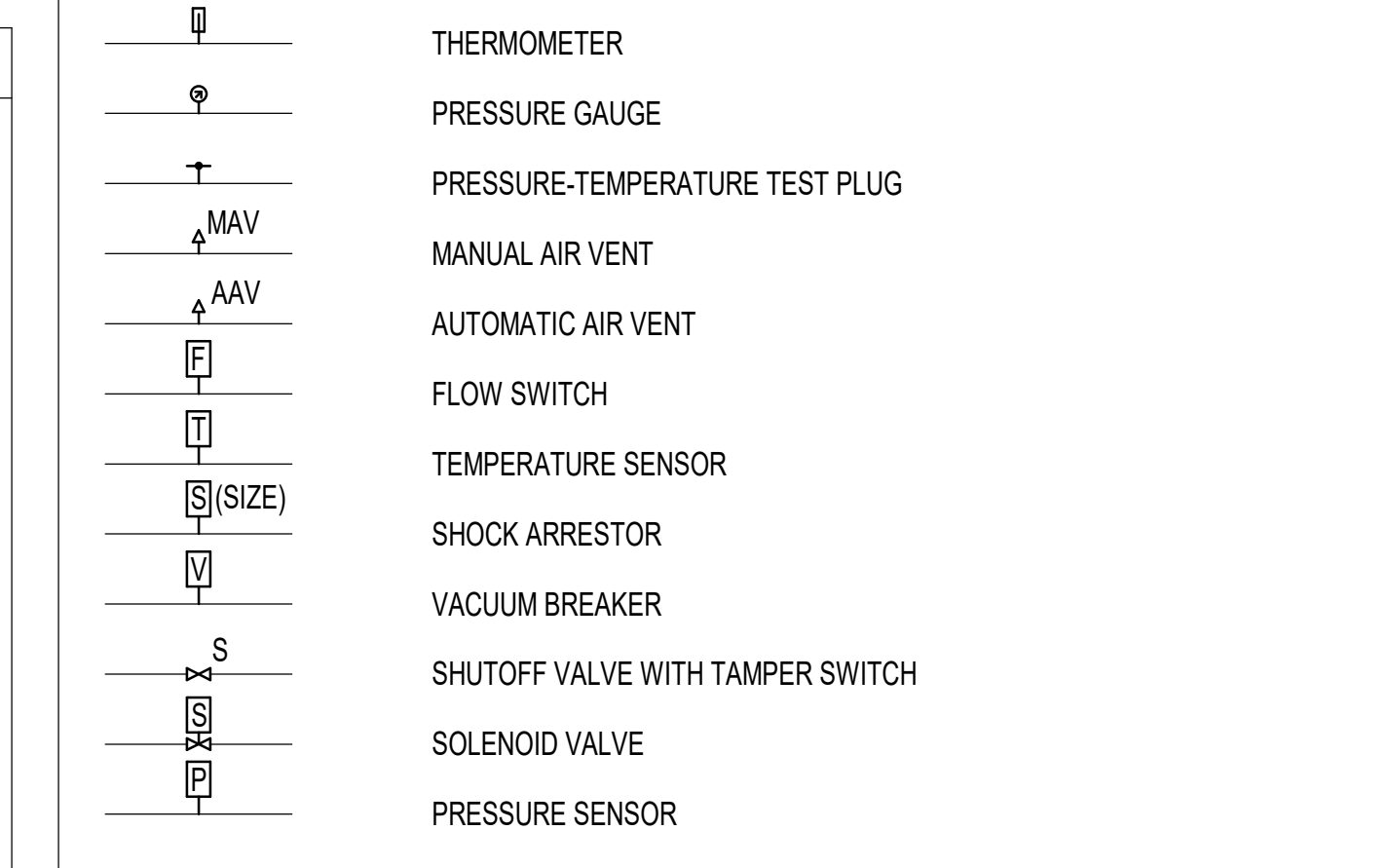
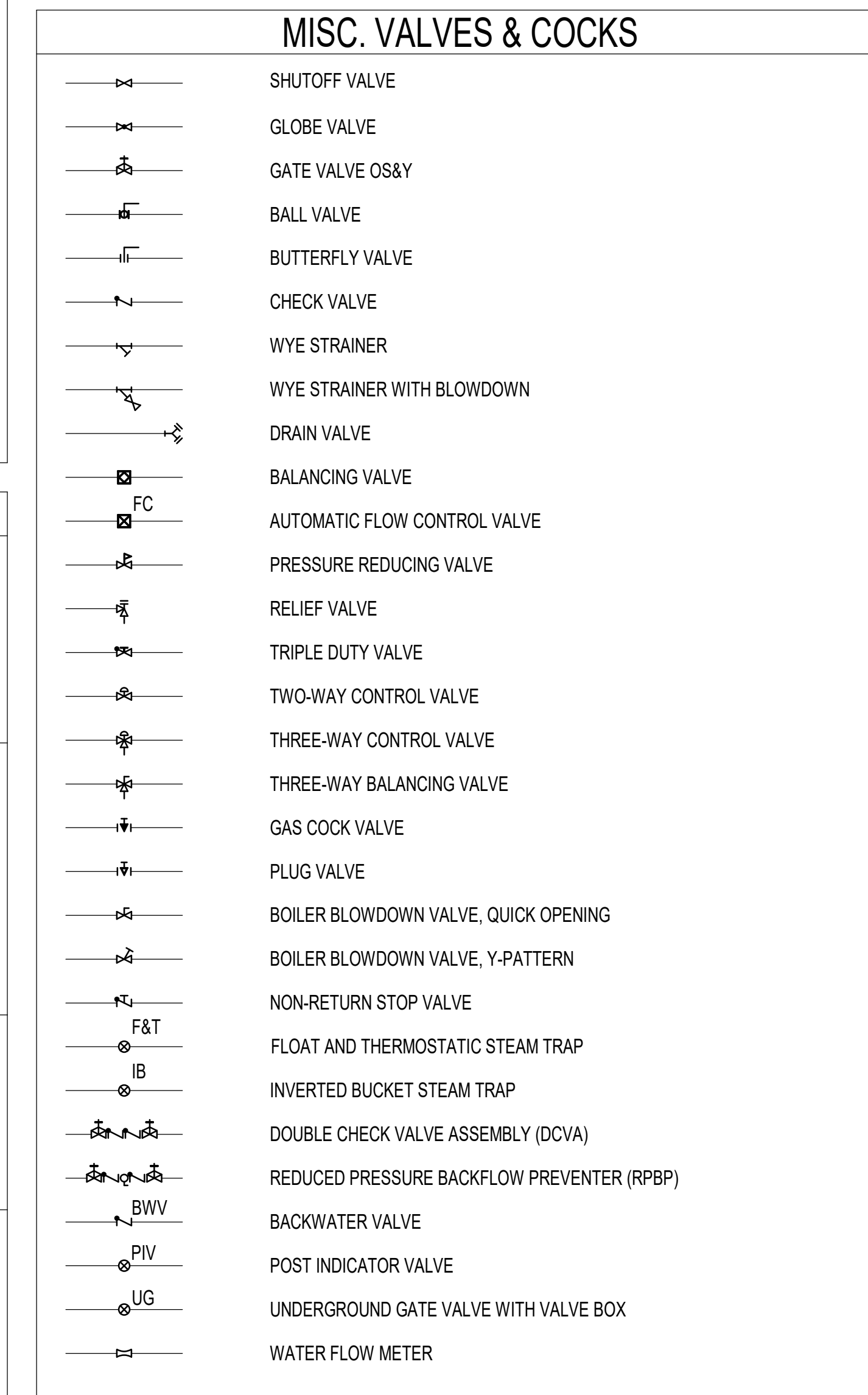


### GENERAL NOTES:

A. THIS IS A STANDARD LEGEND SHEET, THEREFORE, SOME SYMBOLS MAY APPEAR ON THIS SHEET THAT DO NOT APPEAR ON THE DRAWINGS.



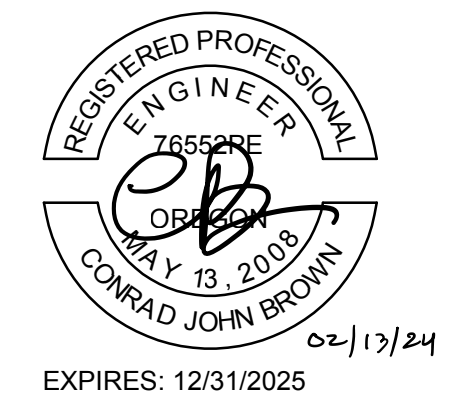
### PLUMBING SHEET LIST

SHEET #	SHEET NAME
P-001	SYMBOLS, LEGENDS AND ABBREVIATIONS - PLUMBING
P-002	SYMBOLS, LEGENDS AND ABBREVIATIONS - PLUMBING
P-221	SCHEMATIC 1ST FLOOR PLAN - PLUMBING
P-222	SCHEMATIC 2ND FLOOR PLAN - PLUMBING & FIRE PROTECTION
Grand total: 4	

# ROWELL BROKAW

1203 Willamette Street  
Suite 210  
Eugene, Oregon 97401  
541 485 1003  
rowellbrokaw.com

Architecture. Design. Strategy.



### REVISIONS TO THIS SHEET

REV.	DATE	DESCRIPTION
1		

### SET ISSUE DATE

BP	2024.02.09
100% DD	2023.12.15
100% SD	2023.10.28

### PROJECT TRACKING

RBA #:	2327
P.I.C.:	
PM / PA:	

Owner  
**OSU FRC**

Project Name  
**AZALEA EARLY CHILDHOOD CENTER**

Project Address  
**1050 SW MADISON AVE,  
CORVALLIS OR 97333**

**SYMBOLS, LEGENDS AND ABBREVIATIONS - PLUMBING**

# P-001

STANDARD ABBREVIATIONS

AD	AREA DRAIN	F	DEGREES FAHRENHEIT	MAX	MAXIMUM	TD	TRENCH DRAIN
ADA	AMERICANS WITH DISABILITIES ACT	FC	FORWARD CURVED	MBH	THOUSAND BTU PER HOUR	TDH	TOTAL DISCHARGE HEAD
AF	AIRFOIL	FCO	FLOOR CLEANOUT	MCA	MINIMUM CIRCUIT AMPACITY	TDL	TOTAL DEVELOPED LENGTH
AFF	ABOVE FINISHED FLOOR	FD	FIRE DAMPER (MECHANICAL)	MECH	MECHANICAL	TEMP	TEMPERATURE
AHP	APPARATUS HOUSING PLENUM	FD	FLOOR DRAIN (PLUMBING)	MERV	MINIMUM EFFICIENCY REPORTING VALUE	TMV	THERMOSTATIC MIXING VALVE
AL	ALUMINUM	FDC	FIRE DEPARTMENT CONNECTION	MFR	MANUFACTURER	TOP	TOP OF PIPE
ALT	ALTERNATIVE	FFE	FINISHED FLOOR ELEVATION	MIN	MINIMUM	TP	TRAP PRIMER VALVE
AP	ACCESS PANEL	FIG	FIGURE	MISC	MISCELLANEOUS	TS	TAMPER SWITCH
APD	AIR PRSSURE DROP	FL	FLOOR	MOCOP	MAXIMUM OVERCURRENT PROTECTION	TSP	TOTAL STATIC PRESSURE
APPROX	APPROXIMATELY	FLA	FULL LOAD AMPACITY	MS	MOP SINK	TYP	TYPICAL
ARCH	ARCHITECT, ARCHITECTURAL	FLEX	FLEXIBLE	MTD	MOUNTED	U	URINAL
AS	AUTOMATIC SPRINKLER	FP	FIRE PUMP	NC	NORMALLY CLOSED	UG	UNDERGROUND
AUTO	AUTOMATIC	FPD	FLUID PRESSURE DROP	NIC	NOT IN CONTRACT	UP	UP (PENETRATES FLOOR SLAB)
BDD	BACKDRAFT DAMPER	PPM	FEET PER MINUTE	NO	NORMALLY OPEN	UON	UNLESS OTHERWISE NOTED
BFF	BELOW FINISHED FLOOR	FPS	FEET PER SECOND	NPS	NOMINAL PIPE SIZE	V	VOLTS
BHP	BREAK HORESPOWER	FS	FLOOR SINK	NRS	NON-RISING STEM	VB	VACUUM BREAKER
BI	BACKWARD INCLINED	FSD	FIRE SMOKE DAMPER	NTS	NOT TO SCALE	VD	VOLUME DAMPER
BLDG	BUILDING	FT	FEET/FOOT	OAT	OUTSIDE AIR TEMPERATURE	VEL	VELOCITY
BOP	BOTTOM OF PIPE	FTR	FINNED TUBE RADIATOR	OC	ON CENTER DISTANCE	VERT	VERTICAL
BOS	BOTTOM OF STRUCTURE	FLT	FLUSH TANK	OD	OVERFLOW DRAIN	VFD	VARIABLE FREQUENCY DRIVE
BSMT	BASEMENT	FU	FIXTURE UNIT	OS&Y	OUTSIDE SCREW & YOKE GATE VALVE	VTR	VENT THROUGH ROOF
BTU	BRITISH THERMAL UNIT	FV	FLUSH VALVE	OSA	OUTSIDE AIR	W	WIDTH
BTUH	BRITISH THERMAL UNITS PER HOUR	(F)	FUTURE	PD	PLANTER DRAIN	WB	WET BULB
BTV	BUTTERFLY VALVE	G	GRADE	P/I/T	PITCH PER FOOT	WC	WATER CLOSET
BV	BALANCING VALVE	GA	GAGE/GAUGE	PG	PRESSURE GAUGE	WCO	WALL CLEANOUT
CALC	CALCULATION	GAL	GALLON	PH	PHASE	WFO	WATER FIXTURE UNITS
CB	CATCH BASIN	GALV	GALVANIZED	PIV	POST INDICATING VALVE	WG	WATER GAUGE
CFH	CUBIC FEET PER HOUR	GLY	GLYCOL	PP	POLYPROPYLENE	WH	WALL HYDRANT
CFM	CUBIC FEET PER MINUTE	GH	GROUND HYDRANT	PRV	PRESSURE REDUCING VALVE	WHA	WATER HAMMER ARRESTOR
CFS	CUBIC FEET PER SECOND	GPH	GALLONS PER HOUR	PS	PRESSURE SWITCH	WPD	WATER PRESSURE DROP
CI	CAST IRON	GPM	GALLONS PER MINUTE	PSI	POUNDS PER SQUARE INCH	WTD	WATER TEMPERATURE DROP
CL	CENTERLINE	GV	GATE VALVE	PSIG	POUNDS PER SQUARE INCH (GAUGE)	WTR	WATER TEMPERATURE RISE
CLG	CEILING OR COOLING	H	HEIGHT	PVC	POLYVINYL CHLORIDE	W/	WITH
CO	CARBON MONOXIDE	PVS	PVC COATED STEEL	R_RAD	RADIUS	W/O	WITHOUT
CO	CLEANOUT	HB	HOSE BIBB	RA	RELIEF AIR		
CONC	CONCRETE	HD	HUB DRAIN	RD	ROOF DRAIN		
CONN	CONNECT, CONNECTION	HORIZ	HORIZONTAL	RET	RETURN AIR		
CONT	CONTINUED, CONTINUATION	HP	HORSEPOWER	REV	REVISION		
CP	CIRCULATING PUMP	HR	HOUR	RH	RELATIVE HUMIDITY		
CTG	CLEANOUT TO GRADE	HSW	HORIZONTAL SIDE WALL	RISE	RISE (WITHIN FLOOR)		
CV	CHECK VALVE	HT	HEAT TRACE	RM	ROOM MANIFOLD		
DB	DRY BULB	HTG	HEATING	RN	RISER NIPPLE		
DDC	DIRECT DIGITAL CONTROL	HV	HOSE VALVE	RPM	REVOLUTIONS PER MINUTE		
DEFL	DEFLECTION	HVC	HOSE VALVE CABINET	S	SINK		
DF	DRINKING FOUNTAIN	ID	INSIDE DIAMETER, INSIDE DIMENSION	SA	SUPPLY AIR		
DFU	DRAINAGE FIXTURE UNIT	IE	INVERT ELEVATION	SB	SWAY BRACE		
DI	DEIONIZED	IN	INCH, INCHES	SCFM	STANDARD CUBIC FEET PER MINUTE		
DIA	DIAMETER	INSUL	INSULATION	SD	SHOWER DRAIN (PLUMBING)		
DIP	DUCTILE IRON PIPE	IPS	IRON PIPE SIZE	SD	SMOKE DAMPER (MECHANICAL)		
DN	DOWN (PENETRATES FLOOR)	ISO	ISOMETRIC	SE	SEWAGE EJECTOR		
DP	DEW POINT	ISOL	ISOLATOR, ISOLATION	SECT	SECTION		
DR	DRAIN	JP	JOCKEY PUMP	SENS	SENSIBLE		
DV	DRAIN VALVE	KW	KILOWATT	SF	SQUARE FOOT, SQUARE FEET		
DROP	DROP (WITHIN FLOOR)	KWH	KILOWATT HOUR	SH	SHOWER		
DWDI	DOUBLE WIDTH DOUBLE INLET	L	LENGTH	SIM	SIMILAR		
DWG	DRAWING	LAV	LAVATORY	SOV	SHUTOFF VALVE		
(E), EXIST	EXISTING	LB	POUND	SP	STATIC PRESSURE		
EAT	ENTERING AIR TEMPERATURE	LDB	LEAVING DRY BULB	SPEC	SPECIFICATION		
EC	EXTENDED COVERAGE	LF	LINEAR FEET	SQ	SQUARE		
ECM	ELECTRONICALLY COMMUTATED MOTOR	LFT	LEAVING FLUID TEMPERATURE	SQ IN	SQUARE INCH, SQUARE INCHES		
EDB	ENTERING DRY BULB	LVG	LEAVING	SS	STAINLESS STEEL (ALL)		
EEW	EMERGENCY EYE WASH	LWB	LEAVING WET BULB	SSP	STANDARD SPRAY PENDENT		
EFF	EFFICIENCY	LWT	LEAVING WATER TEMPERATURE	SSU	STANDARD SPRAY UPRIGHT		
EFT	ENTERING FLUID TEMPERATURE			STL	STEEL		
ELEC	ELECTRIC, ELECTRICAL			STRUCT	STRUCTURE, STRUCTURAL		
ELEV	ELEVATION			SWP	SINGLE WALL PLENUM		
ENGR	ENGINEER			SWSI	SINGLE WIDTH SINGLE INLET		
EQ	EQUAL						
EQUIP	EQUIPMENT						
ES	EMERGENCY SHOWER						
ESP	EXTERNAL STATIC PRESSURE						
ET	EXPANSION TANK						
EWB	ENTERING WET BULB						
EWC	ELECTRIC WATER COOLER						
EWH	ELECTRIC WATER HEATER						
EWT	ENTERING WATER TEMPERATURE						
EX	EXTRACTOR						
EXP	EXPANSION						
EXH	EXHAUST OR EXHAUST AIR						

PLUMBING PIPING

---	W	WASTE ABOVE GRADE	---	SR	SILVER RECOVERY
---	W	WASTE BELOW GRADE	---	MA	MEDICAL AIR
---	PW	PUMPED WASTE ABOVE GRADE	---	MAI	MEDICAL AIR INTAKE
---	PW	PUMPED WASTE BELOW GRADE	---	MV	MEDICAL VACUUM
---	SD	STORM DRAIN ABOVE GRADE	---	MVE	MEDICAL EVACUATION EXHAUST
---	SD	STORM DRAIN BELOW GRADE	---	MVEX	MEDICAL VACUUM EXHAUST
---	PSD	PUMPED STORM DRAIN ABOVE GRADE	---	WAGD	WASTE ANESTHETIC GAS DISPOSAL
---	PSD	PUMPED STORM DRAIN BELOW GRADE	---	N2O	NITROUS OXIDE
---	OD	OVERFLOW DRAIN ABOVE GRADE	---	O2	OXYGEN
---	OD	OVERFLOW DRAIN BELOW GRADE	---	IA	INSTRUMENT AIR
---	GW	GREASE WASTE ABOVE GRADE	---	IAI	INSTRUMENT AIR INTAKE
---	GW	GREASE WASTE BELOW GRADE	---	A	COMPRESSED AIR
---	GV	GREASE VENT	---	AR	ARGON
---	D	DRAIN (CONDENSATE/INDIRECT)	---	ATV	ATMOSPHERIC VENT
---	V	VENT	---	CAS	CLEAN AIR SUPPLY
---	CW	COLD WATER	---	CBG	CARBON DIOXIDE
---	HW	HOT WATER	---	CDA	CLEAN DRY AIR
---	RHW	RECIRCULATING HOT WATER	---	CHL	CHLORINE
---	TW	TEMPERED WATER	---	CO2	CARBON DIOXIDE
---	HTW	HIGH TEMPERATURE HOT WATER	---	DCL	DECHLORINATED WATER
---	RHTW	HIGH TEMPERATURE RECIRCULATING HOT WATER	---	HPA	HIGH PURITY AIR
---	RTW	RECIRCULATING TEMPERED WATER	---	H2	HYDROGEN
---	ICW	INDUSTRIAL COLD WATER	---	N2	NITROGEN
---	IHW	INDUSTRIAL HOT WATER	---	LP	LIQUEFIED PETROLEUM
---	IRHW	INDUSTRIAL RECIRCULATING HOT WATER	---	LV	LAB VACUUM
---	G	NATURAL GAS (LOW PRESSURE)	---	LN2	LIQUID NITROGEN
---	MG	NATURAL GAS (MEDIUM PRESSURE)	---	LW	LAB WASTE ABOVE GRADE
---	GV	GAS VENT	---	LW	LAB WASTE BELOW GRADE
---	FOF	FUEL OIL FILL	---	LWV	LAB VENT
---	FOR	FUEL OIL RETURN	---	PCW	PROCESS COLD WATER
---	FOS	FUEL OIL SUPPLY	---	PGW	PROCESS GREY WATER
---	FOV	FUEL OIL VENT	---	PT	PNEUMATIC TUBE
---	IRR	IRRIGATION	---	SL	SLURRY LINE
---	NPW	NON-POTABLE WATER	---	PD	PUMPED DISCHARGE
---	LP	LOW PRESSURE COLD WATER	---	VPD	VACUUM PUMP DISCHARGE
---	LP	LOW PRESSURE HOT WATER	---	ADV	ALUMINUM DUST VACUUM
---	LP	LOW PRESSURE RECIRCULATING HOT WATER	---	CV	HOUSECLEANING VACUUM
---	HP	HIGH PRESSURE COLD WATER	---	DMV	DRY MOP VACUUM
---	HP	HIGH PRESSURE HOT WATER	---	EV	EVACUATION VACUUM
---	HP	HIGH PRESSURE RECIRCULATING HOT WATER	---	PV	PROCESS VACUUM
---	DWS	DRINKING WATER SUPPLY (CHILLED)	---	WMV	WET MOP VACUUM
---	DWR	DRINKING WATER RETURN (CHILLED)			
---	IW	ICE WATER			
---	WW	WELL WATER			
---	AV	ACID VENT			
---	AW	ACID WASTE ABOVE GRADE			
---	AW	ACID WASTE BELOW GRADE			
---	DIS	DEIONIZED WATER SUPPLY			
---	DIR	DEIONIZED WATER RETURN			
---	DRC	DEIONIZED WATER RECLAIM			
---	EWS	EMERGENCY EYEWASH & SHOWER			
---	DS	DISTILLED WATER			
---	RO	REVERSE OSMOSIS WATER			
---	ROR	REVERSE OSMOSIS RECIRCULATED WATER			
---	SHWS	SOLAR HOT WATER SUPPLY			
---	SHWR	SOLAR HOT WATER RETURN			
---	DA	DENTAL AIR			
---	DV	DENTAL VACUUM			
---	FW	FLUORIDE WASTE ABOVE GRADE			
---	FW	FLUORIDE WASTE BELOW GRADE			

ROWELL BROKAW

1203 Willamette Street  
Suite 210  
Eugene, Oregon 97401  
541 485 1003  
rowellbrokaw.com

Architecture. Design. Strategy.



REVISIONS TO THIS SHEET

REV.	DATE	DESCRIPTION
1		

SET ISSUE DATE

BP	2024.02.09
100% DD	2023.12.15
100% SD	2023.10.28

PROJECT TRACKING

RBA #: 2327  
P.I.C.:  
PM / PA:

Owner  
**OSU FRC**

Project Name  
**AZALEA EARLY CHILDHOOD CENTER**

Project Address  
**1050 SW MADISON AVE,  
CORVALLIS OR 97333**

SYMBOLS, LEGENDS AND ABBREVIATIONS - PLUMBING

P-002

# ROWELL BROKAW

1203 Willamette Street  
Suite 210  
Eugene, Oregon 97401  
541 485 1003  
rowellbrokaw.com

Architecture. Design. Strategy.



EXPIRES: 12/31/2025

## REVISIONS TO THIS SHEET

REV.	DATE	DESCRIPTION
1		

## SET ISSUE DATE

BP	2024.02.09
100% DD	2023.12.15
100% SD	2023.10.28

## PROJECT TRACKING

RBA #: 2327  
P.I.C:  
PM / PA:

Owner  
**OSU FRC**

Project Name  
**AZALEA EARLY CHILDHOOD CENTER**

Project Address  
**1050 SW MADISON AVE,  
CORVALLIS OR 97333**

## EQUIPMENT SCHEDULE - PLUMBING

# P-003

## PLUMBING FIXTURE SCHEDULE

TAG NUMBER	FIXTURE TYPE	ROUGH-IN SIZE (INCHES)					GPM/GPF	ELEC. CONNECTION	DESCRIPTION	NOTES
		W	V	CW	HW	TW				
WC-1	WATER CLOSET	4	2	1-1/2	-	-	1.28	N	WALL HUNG, (SENSOR OR MANUAL) FLUSH VALVE	
WC-2	WATER CLOSET	4	2	1-1/2	-	-	1.28	N	WALL HUNG, (SENSOR OR MANUAL) FLUSH VALVE, ADA	
L-1	LAVATORY	2	1-1/2	1/2	1/2	-	0.5	N	WALL HUNG, (SENSOR) FAUCET, (ADA)	
S-1	SINK (CLASSROOM)	2	1-1/2	3/4	3/4	-	1.5	-	COUNTERTOP, (ADA)	
S-2	SINK (CLASSROOM)	2	1-1/2	3/4	3/4	-	1.5	-	COUNTERTOP, (ADA)	
S-3	SINK	2	1-1/2	3/4	3/4	-	1.5	-	COUNTERTOP, (SINGLE) COMPARTMENT, (ADA)	
S-4	SINK	2	1-1/2	3/4	3/4	-	1.5	-	COUNTERTOP, (SINGLE) COMPARTMENT, (ADA)	
DF-1	DRINKING FOUNTAIN	2	1-1/4	1/2	-	-	-	N	WALL HUNG, (DUAL) HEIGHT, (ADA), (BOTTLE FILLER)	

### GENERAL NOTES:

A. NONE.  
B. NONE.  
NOTES:  
1. NONE.  
2. NONE.

## DRAINS AND CLEANOUTS SCHEDULE

TAG	TYPE	MANUFACTURER & MODEL	TRAP PRIMER CONNECTION (Y/N)	DESCRIPTION
FD-1	FLOOR DRAIN	JAY R SMITH 2005 SERIES	Y/N	FINISHED AREAS, ROUND NICKEL BRONZE VANDAL RESISTANT GRATE, CAST IRON BODY, FLASHING COLLAR, ADJUSTABLE STRAINER, NO-HUB OUTLET

### GENERAL NOTES:

A. NONE.  
B. NONE.  
NOTES:  
1. NONE.  
2. NONE.

## PIPE SCHEDULE

SERVICE	MATERIAL
ABOVE GRADE - 4" AND SMALLER	COPPER: ASTM B88 HARD DRAWN COPPER TUBING, TYPE L, WROUGHT COPPER FITTINGS (150 PSI SERVICE), ANSI B16.22 SOLDERED JOINTS, ANSI B16.50 BRAZED JOINTS (PIPING 2 INCHES AND LARGER).
SANITARY WASTE	BELOW GRADE CAST IRON SOIL PIPE, SERVICE WEIGHT (NO HUB); NO HUB PIPE AND FITTINGS ASTM A74, CISPI, WITH 28 GAUGE 304 STAINLESS STEEL CLAMP AND CORRUGATED SHIELD ASSEMBLIES HAVING NEOPRENE GASKETS ASTM C564, CISPI 310-90.
	ABOVE GRADE CAST IRON SOIL PIPE, SERVICE WEIGHT (NO HUB); NO HUB PIPE AND FITTINGS ASTM A74, CISPI, WITH STAINLESS STEEL CLAMP AND CORRUGATED SHIELD ASSEMBLIES HAVING NEOPRENE GASKETS ASTM C564, CISPI 310-90.
SANITARY VENT	BELOW GRADE CAST IRON SOIL PIPE, SERVICE WEIGHT (NO HUB); NO HUB PIPE AND FITTINGS ASTM A74, CISPI, WITH 28 GAUGE 304 STAINLESS STEEL CLAMP AND CORRUGATED SHIELD ASSEMBLIES HAVING NEOPRENE GASKETS ASTM C564, CISPI 310-90.
	BELOW GRADE SCHEDULE 40 PVC OR ABS DWV: ASTM D2665-85a, ASTM D3311-82.
	ABOVE GRADE CAST IRON SOIL PIPE, SERVICE WEIGHT (NO HUB); NO HUB PIPE AND FITTINGS ASTM A74, CISPI, WITH STAINLESS STEEL CLAMP AND CORRUGATED SHIELD ASSEMBLIES HAVING NEOPRENE GASKETS ASTM C564, CISPI 310-90.
	ABOVE GRADE SCHEDULE 40 PVC OR ABS DWV: ASTM D2665-85a, ASTM D3311-82. NOT ALLOWED IN AIR PLENUMS.
MISC. INDIRECT WASTE	COPPER: ASTM B88 HARD DRAWN COPPER TUBING, TYPE L, WROUGHT COPPER FITTINGS (150 PSI SERVICE), ANSI B16.22 SOLDERED JOINTS.
PUMPED WASTE	COPPER: ASTM B88 HARD DRAWN COPPER TUBING, TYPE L, WROUGHT COPPER FITTINGS (150 PSI SERVICE), ANSI B16.22 SOLDERED JOINTS, ANSI B16.50 BRAZED JOINTS (PIPING 2 INCHES AND LARGER).
TRAP PRIMING LINES	COPPER: ASTM B88 HARD DRAWN COPPER TUBING, TYPE L ANNEALED, WROUGHT COPPER FITTINGS (150 PSI SERVICE), ANSI B16.22 SOLDERED JOINTS.



EXPIRES: 12/31/2025

REVISIONS TO THIS SHEET		
REV.	DATE	DESCRIPTION
1		

SET	ISSUE	DATE
BP	2024.02.09	
100% DD	2023.12.15	
100% SD	2023.10.28	

PROJECT TRACKING	
RBA #:	2327
P.I.C.:	
PM / PA:	

Owner  
**OSU FRC**

Project Name  
**AZALEA EARLY CHILDHOOD CENTER**

Project Address  
**1050 SW MADISON AVE,  
CORVALLIS OR 97333**

**SCHEMATIC 1ST FLOOR PLAN - PLUMBING**

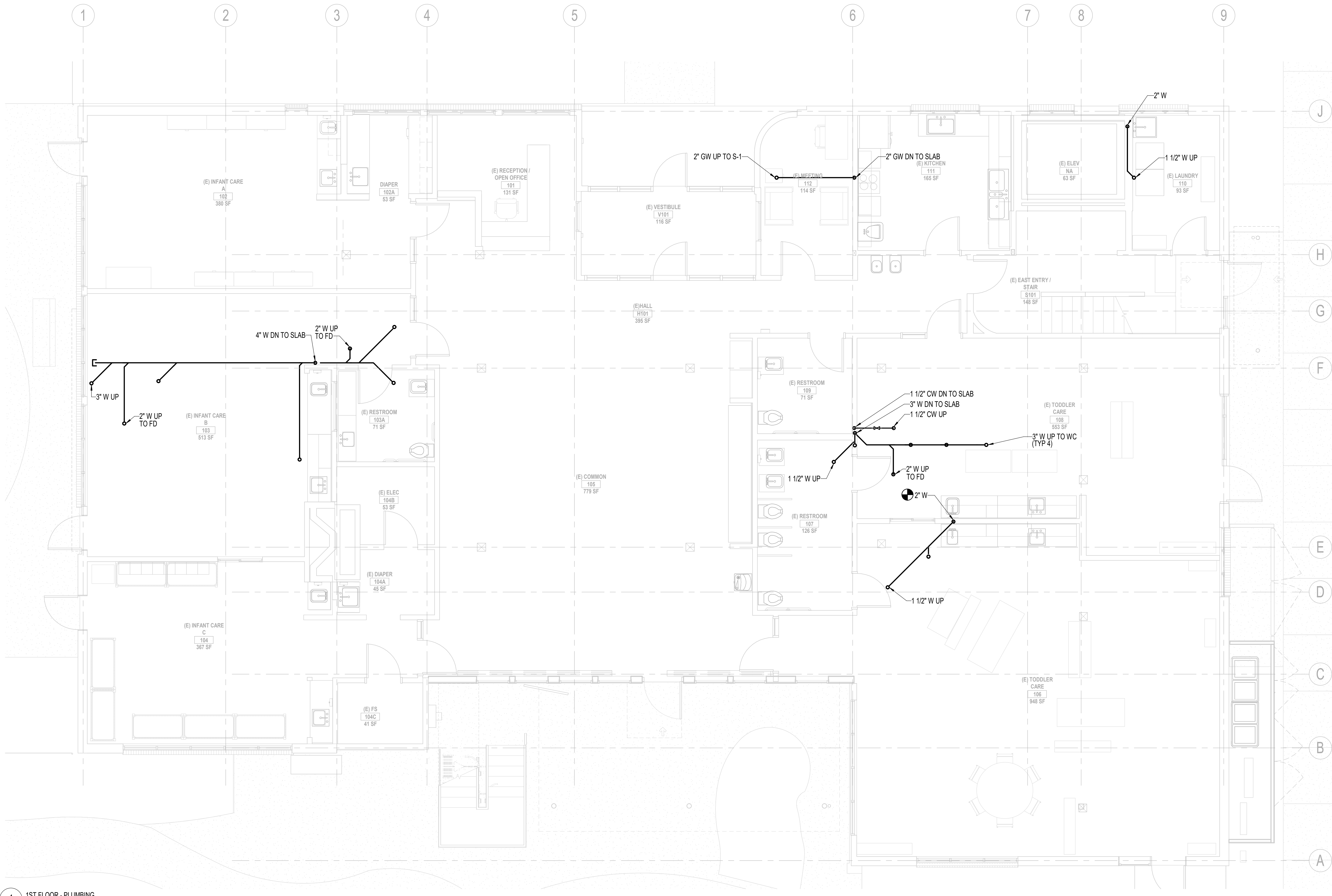
**P-221**

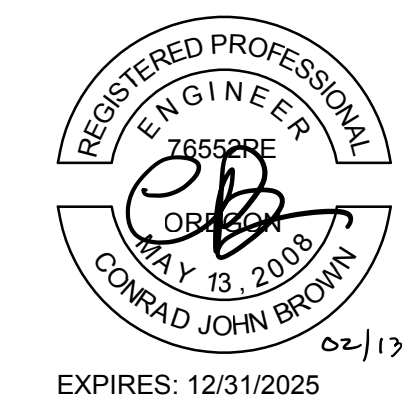
**NOTES:**

- KEYNOTE 1
- KEYNOTE 2

**GENERAL NOTES:**

- A. GENERAL PLUMBING NOTE A.
- B. GENERAL PLUMBING NOTE B.
- C. GENERAL PLUMBING NOTE C.
- D. GENERAL PLUMBING NOTE D.
- E. GENERAL PLUMBING NOTE E.
- F. GENERAL PLUMBING NOTE F.
- G. GENERAL PLUMBING NOTE G.
- H. GENERAL PLUMBING NOTE H.
- I. GENERAL PLUMBING NOTE I.
- J. GENERAL PLUMBING NOTE J.





REV.	DATE	DESCRIPTION
1		

SET	ISSUE	DATE
BP	2024.02.09	
100% DD	2023.12.15	
100% SD	2023.10.28	

PROJECT TRACKING	
RBA #:	2327
P.I.C.:	
PM / PA:	

Owner  
**OSU FRC**

Project Name  
**AZALEA EARLY CHILDHOOD CENTER**

Project Address  
**1050 SW MADISON AVE,  
CORVALLIS OR 97333**

**SCHEMATIC 2ND FLOOR  
PLAN - PLUMBING &  
FIRE PROTECTION**

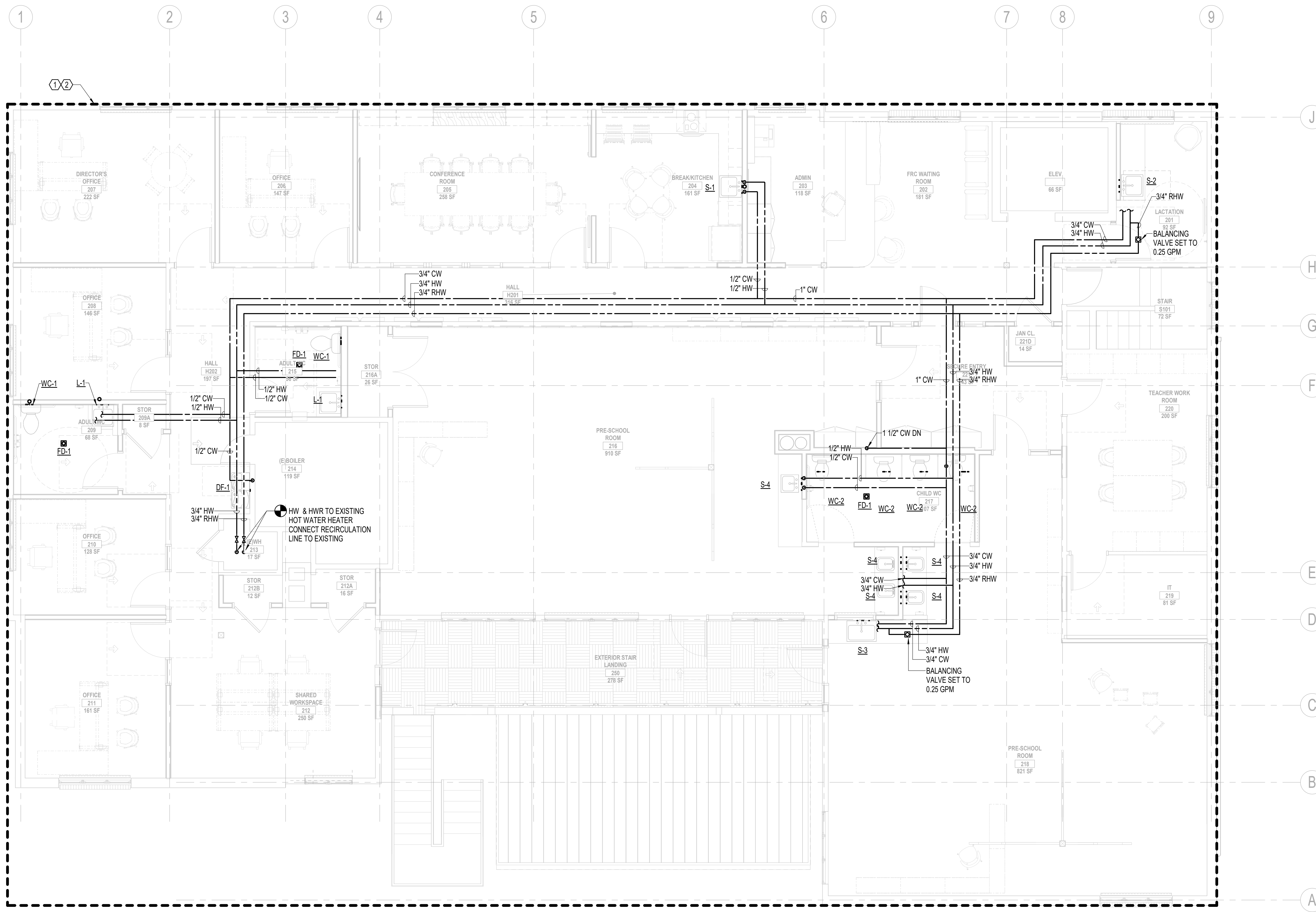
## P-222

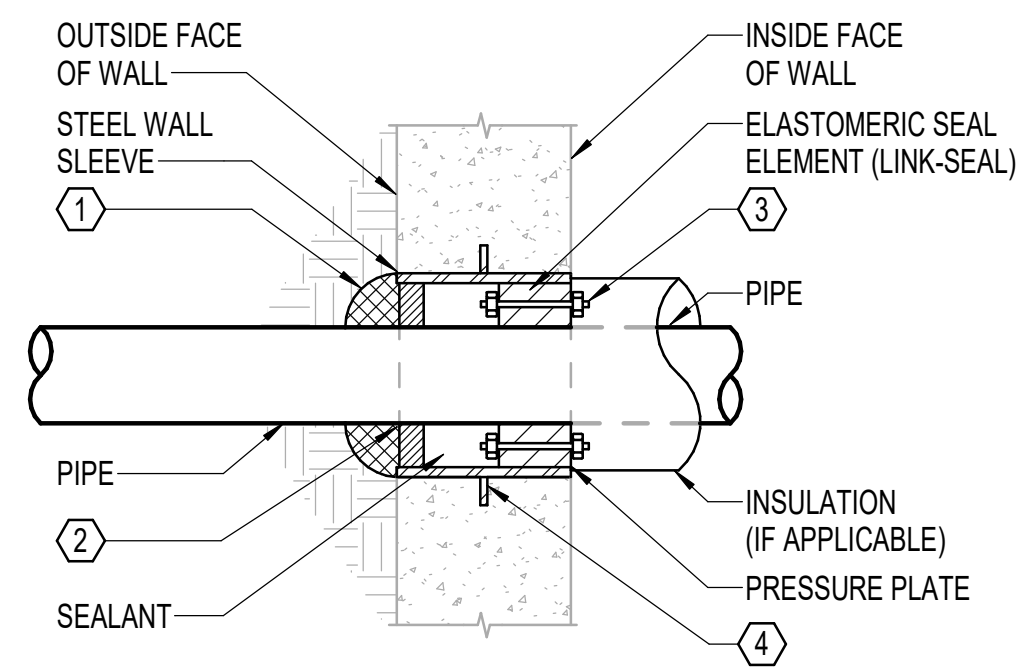
### NOTES:

1. DEMO ALL SPRINKLER PIPE ON FLOOR. REVISE DISTRIBUTION TO FIRST FLOOR TO RISE UP IN WALL.
2. PROVIDE ALL NEW SPRINKLER MAINS BRANCHES AND HEADS TO SUIT SECOND FLOOR LAYOUT. PROVIDE CONCEALED HEADS IN AREAS WITH CEILINGS.

### GENERAL NOTES:

- |                             |                             |
|-----------------------------|-----------------------------|
| A. GENERAL PLUMBING NOTE A. | F. GENERAL PLUMBING NOTE F. |
| B. GENERAL PLUMBING NOTE B. | G. GENERAL PLUMBING NOTE G. |
| C. GENERAL PLUMBING NOTE C. | H. GENERAL PLUMBING NOTE H. |
| D. GENERAL PLUMBING NOTE D. | I. GENERAL PLUMBING NOTE I. |
| E. GENERAL PLUMBING NOTE E. | J. GENERAL PLUMBING NOTE J. |





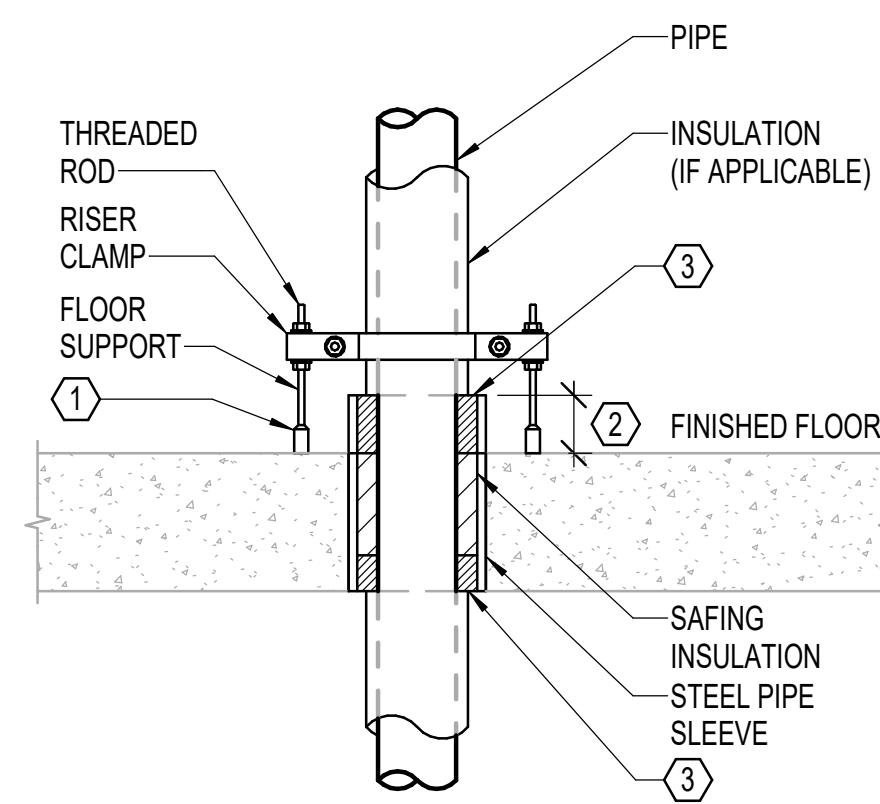
**GENERAL NOTES:**

- A. REFER TO SPECIFICATION 220500 FOR ADDITIONAL INFORMATION.

**NOTES:**

1. SEAL OUTSIDE OF JOINT WITH MASTIC SEALANT.
2. SEAL OUTSIDE OF PENETRATION WITH RESILIENT WATERPROOF CAULKING.
3. STAINLESS STEEL BOLTS, NUTS AND WASHERS.
4. ANCHOR COLLAR, 2" WATER STOP, CONTINUOUSLY WELDED ON BOTH SIDES.

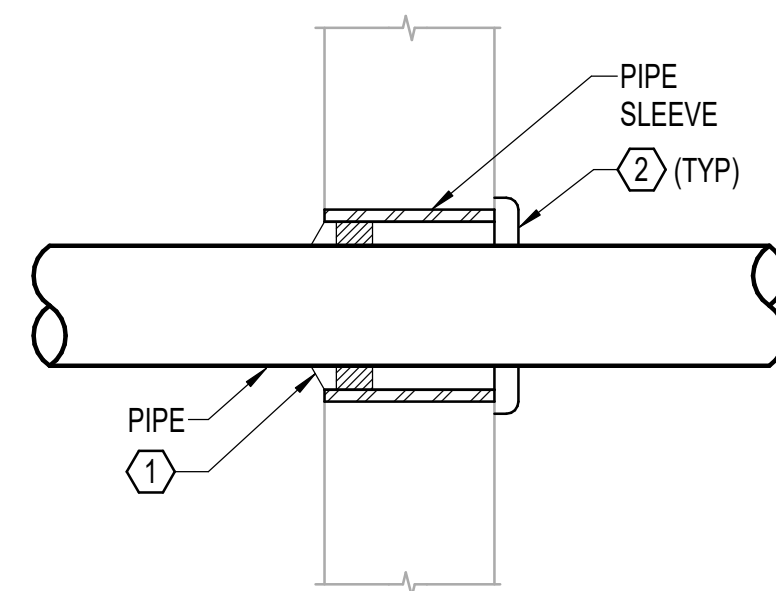
5 BELOW GRADE WALL PENETRATION DETAIL  
NONE



**NOTES:**

1. ROD COUPLING, PROVIDE SUPPORT SPRING MOUNTS WHERE NEEDED.
2. 2" MINIMUM - MECHANICAL ROOMS AND SHAFTS. 1" MINIMUM - ALL OTHER LOCATIONS.
3. PROVIDE FIRESTOPPING / SEAL PER SPECIFICATIONS.

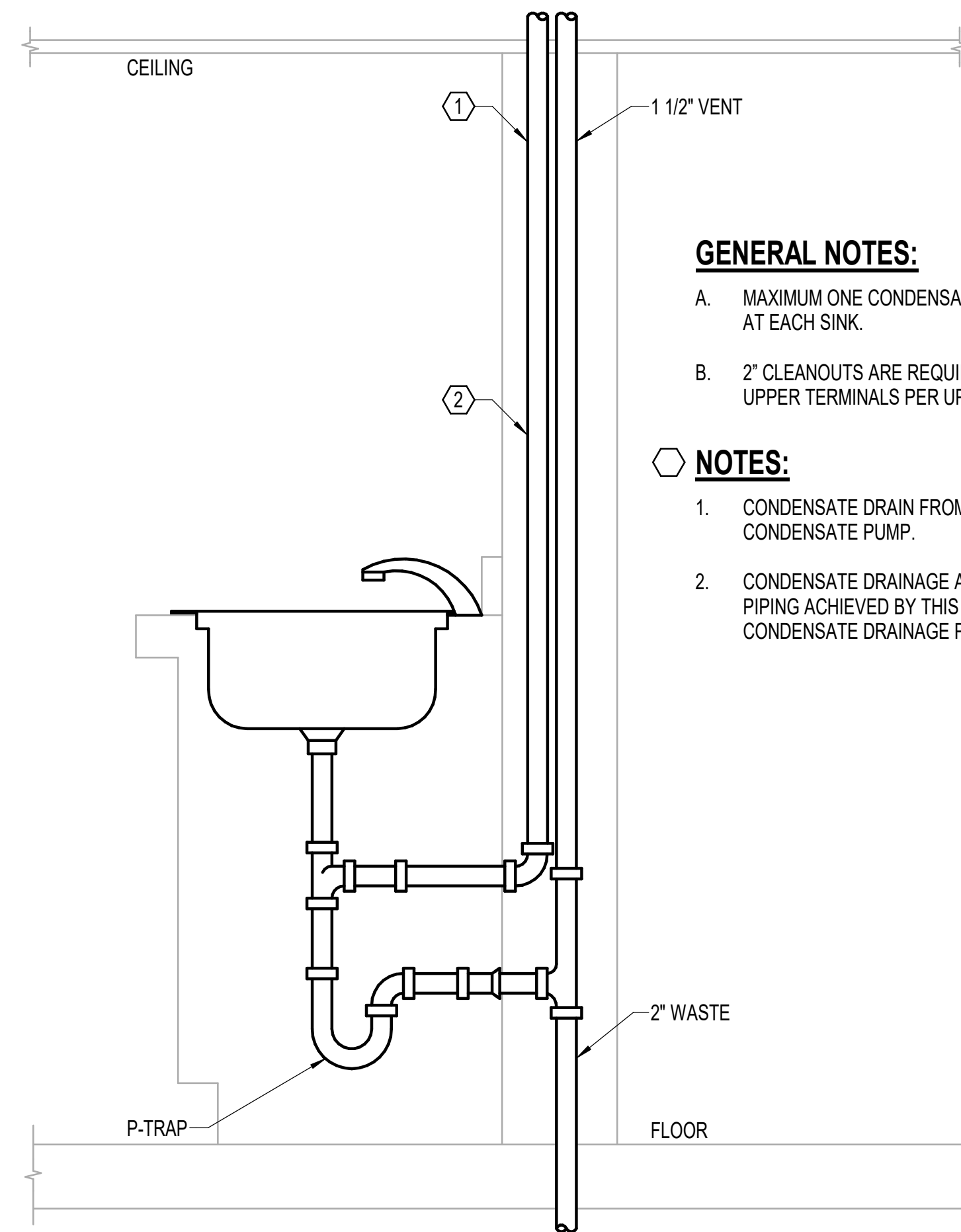
6 FLOOR PENETRATION DETAIL  
NONE



**NOTES:**

1. PROVIDE FIRESTOPPING / SEAL PER SPECIFICATIONS. TYPICAL FOR RATED WALLS.
2. ESCUTCHEON, FOR FINISHED INTERIOR WALLS.

7 INTERIOR WALL PENETRATION DETAIL  
NONE



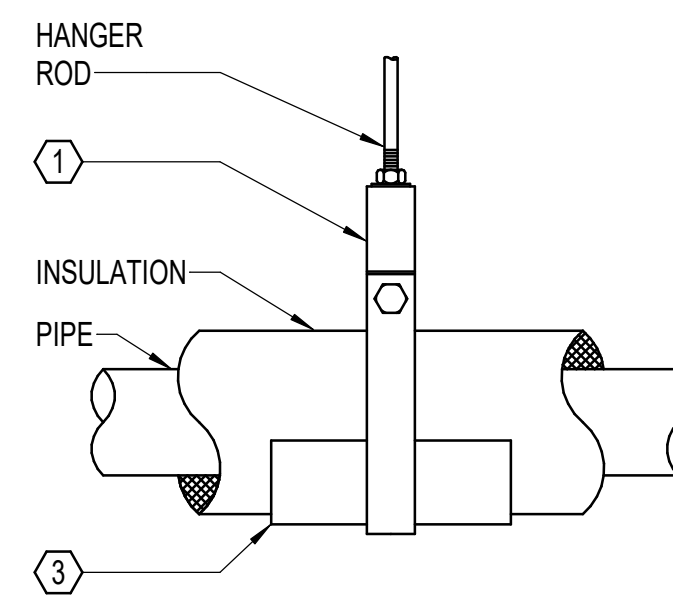
**GENERAL NOTES:**

- A. MAXIMUM ONE CONDENSATE DRAIN CONNECTION AT EACH SINK.
- B. 2" CLEANOUTS ARE REQUIRED ON ALL SINKS UPPER TERMINALS PER UPC SECTION 707.0.

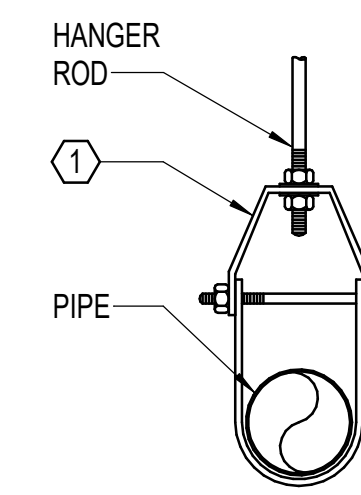
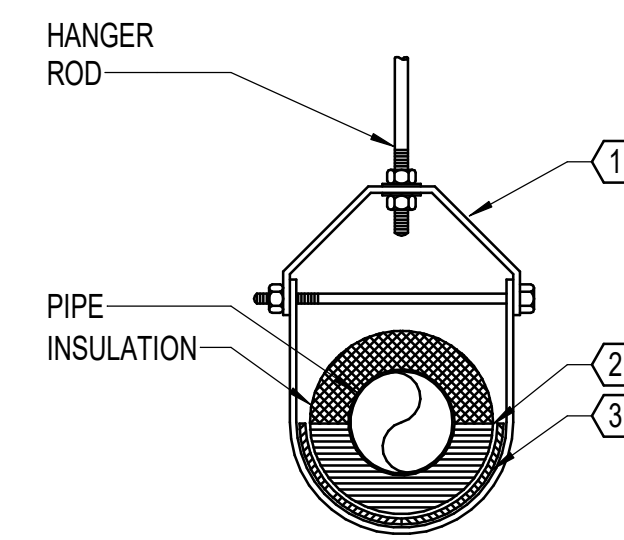
**NOTES:**

1. CONDENSATE DRAIN FROM MECHANICAL UNIT OR CONDENSATE PUMP.
2. CONDENSATE DRAINAGE AIR BREAK FROM WASTE PIPING ACHIEVED BY THIS VERTICAL SECTION OF CONDENSATE DRAINAGE PIPING.

3 CONDENSATE DRAINAGE SINK TAILPIECE CONNECTION DETAIL  
NONE



INSULATED PIPE WITH VAPOR BARRIER



UNINSULATED PIPE

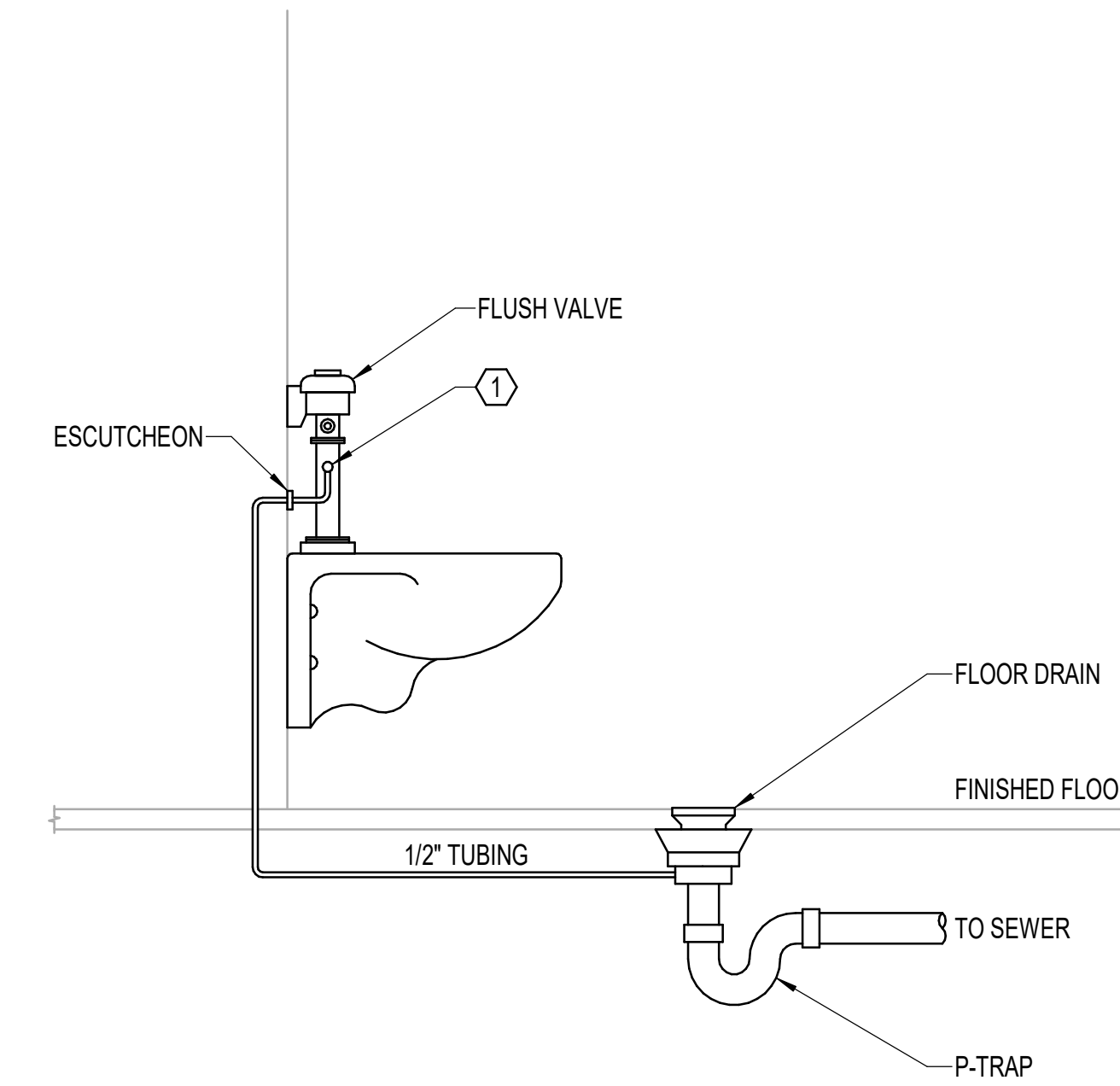
**GENERAL NOTES:**

- A. REFER TO SPECIFICATION 22 07 00 FOR INSULATION THICKNESS REQUIREMENTS AND VAPOR BARRIER VS NON-VAPOR BARRIER INSTALLATION REQUIREMENTS.

**NOTES:**

1. PIPE HANGER (CLEVIS OR RING STYLE). REFER TO SPECIFICATION 22 05 29 FOR TYPE TO BE USED BASED ON PIPE SIZE AND INSTALLATION (INSULATED VS UNINSULATED PIPING).
2. HIGH DENSITY INSULATION INSERT. REFER TO SPECIFICATION 22 07 00.
3. INSULATION PROTECTION SHIELD. 12" LONG (MIN).

4 PIPE SUPPORT DETAIL - HANGER  
NONE



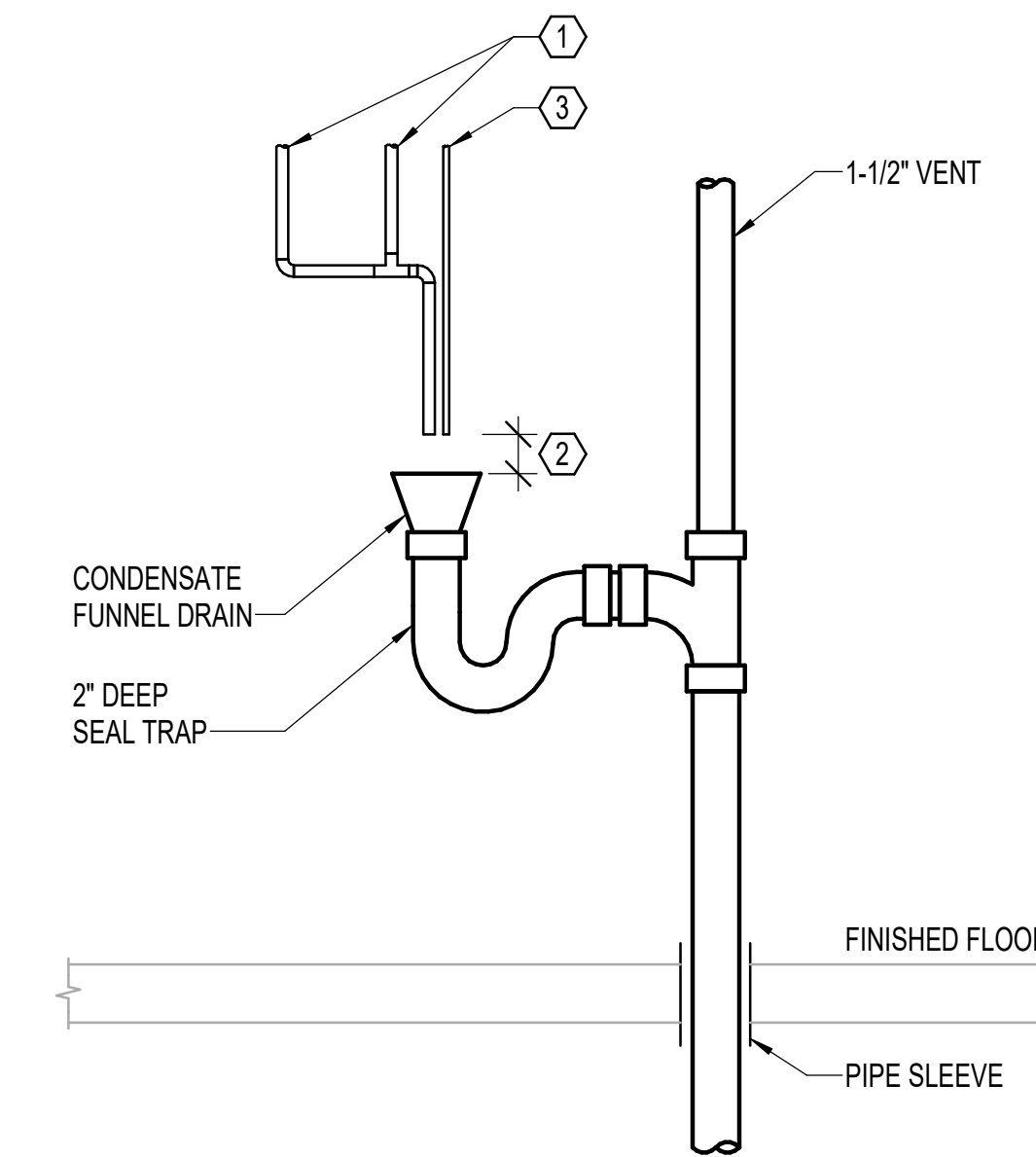
**GENERAL NOTES:**

- A. ALL FLOOR DRAINS, FLOOR SINKS AND SIMILAR TRAPS SHALL BE PRIMED.
- B. REFER TO SPECIFICATIONS FOR ALLOWABLE TRAP PRIMER LINE PIPE MATERIALS.
- C. REFER TO MANUFACTURER LITERATURE FOR INSTALLATION INSTRUCTIONS.

**NOTES:**

1. FLUSH VALVE TRAP PRIMER OUTLET.

1 FLUSH VALVE TRAP PRIMER  
NONE



**NOTES:**

1. CONDENSATE FROM HVAC EQUIPMENT. MULTIPLE OR SINGLE DISCHARGE PIPING.
2. 2" MIN AIR GAP.
3. FROM TRAP PRIMER VALVE. PROVIDE TRAP PRIMER IF DISCHARGE IS NOT CONTINUOUS.

2 CONDENSATE DRAIN - FUNNEL DRAIN DETAIL  
NONE

**ROWELL BROKAW**

1203 Willamette Street  
Suite 210  
Eugene, Oregon 97401  
541 485 1003  
rowellbrokaw.com

Architecture. Design. Strategy.



**REVISIONS TO THIS SHEET**

REV.	DATE	DESCRIPTION
1		

**SET ISSUE DATE**

BP	2024.02.09
100% DD	2023.12.15
100% SD	2023.10.28

**PROJECT TRACKING**

RBA #:	2327
P.I.C.:	
PM / PA:	

Owner  
**OSU FRC**

Project Name  
**AZALEA EARLY CHILDHOOD CENTER**

Project Address  
**1050 SW MADISON AVE,  
CORVALLIS OR 97333**

**DETAILS - PLUMBING**

**P-501**