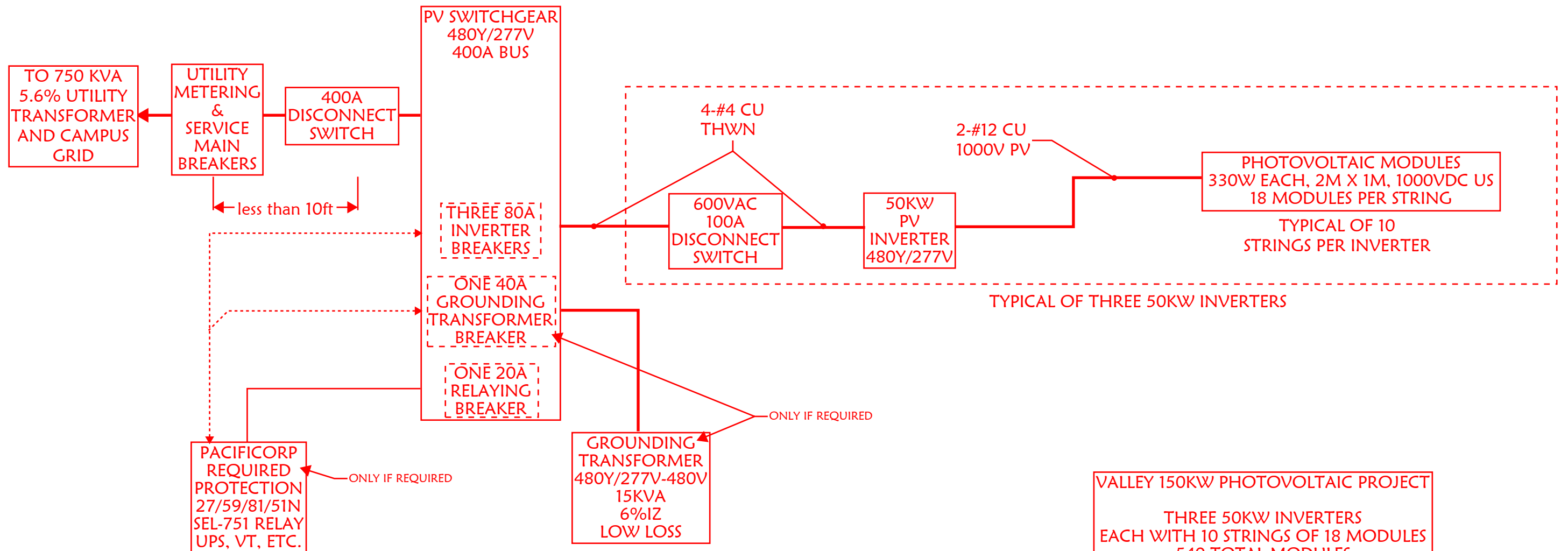


1. MODULES ARE ASSUMED TO BE 1500V, 3.28FT X 6.56FT IN DIMENSION, INSTALLED FLAT ON ROOF.
2. OREGON CODE REQUIRES MINIMUM 4FT PATHS, ALL EDGES, NOT MORE THAN 150FT APART.
3. INTERNATIONAL FIRE CODE REQUIRES CENTRAL PATHS TO INCLUDE ROOM FOR CUTOUTS.
4. CODE REQUIRES AT LEAST 4FT ON ALL SIDES OF VENTILATION STRUCTURES.
5. ONCE PATHS AND EDGES ARE ASSIGNED, MOUNTING AREA IS DETERMINED.
6. MODULE COUNT IS REDUCED TO FIT ENTIRE MODULES, LEAVING ADDITIONAL PATH SPACE.
7. 2 SONNETER MODULE WILL BE RATED ~325-333W.
8. MAXIMUM MODULE COUNT IS 546 MODULES.
9. STC PEAK RATING IS 180KW.
10. ASSUMING ABOUT 1.15 DC/AC RATING, INVERTER RATING COULD BE ~157KW.
11. SUGGEST THREE 50KW INVERTERS FOR 150KW AC RATING.
12. WITH 18 MODULES PER STRING, 30 STRINGS MAX., 540 MODULES.
13. EACH 50KW INVERTER WITH 10 STRINGS, 180 MODULES, 59.4KWDC, 1.19DC/AC RATIO

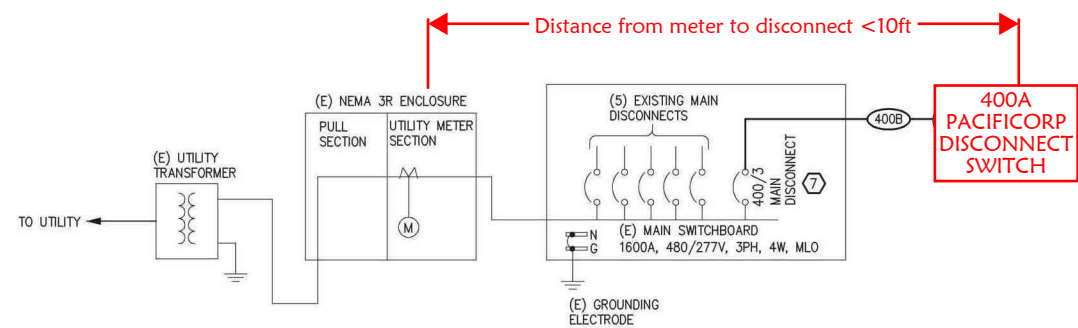
1  
A104  
ROOF LEVEL OVERALL PLAN  
1/16" = 1'-0"  
0 8' 16' 32'  
TRUE NORTH



VALLEY 150KW PHOTOVOLTAIC PROJECT

THREE 50KW INVERTERS  
EACH WITH 10 STRINGS OF 18 MODULES  
540 TOTAL MODULES  
178,200 WDC STC RATING  
1.19 DC/AC RATIO

JULY 31, 2019



EXISTING VALLEY POWER RISER DIAGRAM