



**OREGON STATE UNIVERSITY
REQUEST FOR QUOTE (RFQ)**

		ISSUE DATE:	January 5 th , 2015
RFQ #	ML174250	RFQ DUE DATE:	January 14th @2:00 PM
DELIVER TO:		REQUESTED BY / RETURN QUOTE TO:	
DEPARTMENT:	Crop and Soil Science	NAME:	Mark Lessel
ADDRESS:	107 Crop Science Building	E-MAIL:	Mark.lessel@oregonstate.edu
CITY, STATE ZIP:	Corvallis, OR 97331	TELEPHONE:	541-737-3667
REQUIRED DELIVERY DATE:	ASAP	FAX:	541-737-2170

ITEM	DESCRIPTION	QTY	UNIT	UNIT PRICE	TOTAL PRICE
1	2014 Ford F-150 STX SuperCrew, 5-1/2' Box, 5.0L V8 FFV Engine. (See Spec Sheet #1) for complete Specs. OR 2014 Ford F-150 XLT SuperCrew, 6-1/2' Box, 5.0L V8 FFV Engine. (See Spec Sheet #2) for complete Specs.	1	EA		
	BRAND & MODEL & YEAR SPECIFIC-NO SUBSTITUTIONS.SHIPPING COSTS & DELIVERY MUST BE ADDED TO COST				

Delivery is f.o.b. destination, prepaid and allowed. Shipping, freight and handling must be included in quoted prices. Additional costs for such are disallowed. **TOTAL**

DELIVERY TIME AFTER RECEIPT OF ORDER: _____ PRICES VALID THROUGH: _____

SPECIAL INSTRUCTIONS: 1. Unless otherwise specified, all items quoted are to be new, unused and not remanufactured in any way. 2. Brand names are for the purpose of describing and establishing the characteristics desired and are not intended to limit or restrict competition. Quoters may submit quotes for substantially equivalent products unless the RFQ provides that a specific brand is necessary because of compatibility requirements, etc. All such brand substitutions shall be subject to approval by OSU. 3. Quoters must clearly identify all products quoted. Brand name and model or number must be shown. 4. Only documents issued as addenda by OSU serve to change the RFQ in any way. 5. OSU reserves the right to make the award by item, partial or whole lots, groups of items or entire quote, whichever is in the best interest of OSU. 6. OSU may reject any Quote not in compliance with the RFQ, attachments, and addenda, or if it is in the best interest of OSU.	VENDOR INFORMATION:	
	COMPANY:	
	ADDRESS:	
	CITY, STATE, ZIP:	
	CONTACT NAME:	
	E-MAIL:	
	TELEPHONE:	
	FAX:	
	VENDOR SIGNATURE:	
	<i>By signature below the undersigned certifies that they are authorized to act on behalf of the quoter and will comply with all aspects of the quote herein.</i>	
SIGNATURE:		
NAME/TITLE:		

This procurement is subject to the indicated Oregon State University Standard Terms and Conditions for: Goods Services Purchase Order Construction Software. The indicated terms and conditions may be viewed at <http://pacs.oregonstate.edu/terms-and-conditions>



Go Further

2014 | FORD F-150



Colors No Preference, Except No Black Exterior

 Exterior:

 Interior:

Your Selections

Model

- 2014 Ford F-150 STX SuperCrew®, 5-1/2' Box, 5.0L V8 FFV Engine, Six-Speed Automatic Electronic Transmission w/Tow/Haul Mode, 4X4, 3.55 Non-Limited Slip Axle Ratio

Packages

- 201A
- Equipment Group 201A Discount
- Power Equipment Group
- Trailer Tow Package
- Communications Package
- STX Décor Package

Exterior

- Tuxedo Black
- Less Secondary Color
- Fog Lamps
- SelectShift® Automatic Transmission
- Power Black Mirrors
- 5" Chrome Step Bars
- 3.55 Non-Limited Slip Axle Ratio
- 18" Machined-Aluminum Wheels
- P275/65R18 OWL All-Terrain Tires

Interior

- Steel Gray
- Cruise Control
- My Key®
- Vinyl Flooring Black
- Single CD w/ SYNC® Basic
- SYNC®
- SiriusXM Satellite Radio
- Cloth 40/20/40 Front Seats w/Manual Driver Lumbar

Accessories

- None Selected

Standard Features

Interior Features

- Manual air conditioning
- Gauges, easy-to-read
- Customer information display
- Display center (includes warning messages and text functions, e.g. door ajar)
- Outside temperature display
- Dome lamp, rear
- Dome lamp with map light, front (SuperCab and SuperCrew® models)
- Fade-to-off interior lighting
- Delayed accessory power
- Power locks with integrated key transmitter keyless entry including auto-lock (SuperCrew® on XL)
- Horn, dual-note
- Power point, front
- Power point, rear (SuperCab and SuperCrew® models)
- Black urethane steering wheel
- Steering wheel, tilt
- Cruise control
- Intermittent windshield wipers
- Manual day/night rearview mirror
- Deployable cupholder under 20% seat
- Rear door cupholders for SuperCab and SuperCrew®
- Visors with passenger-side mirror
- Grab handles, front passenger-side and for SuperCrew®, rear
- Black vinyl floor covering

Exterior Features

- Painted body color front and rear step bumpers with body-color upper fascia
- Body color grille surround with bar-style insert
- Handles, door and tailgate - black
- Removable tailgate with key lock and lift assist
- Cargo box tie-down hooks, four
- Sideview mirror Skull caps - black
- Side mirrors - Power
- Side mirrors - Integrated spotter mirror, driver's side
- Stone cuffs - Black (Rear only on SVT Raptor)
- Clear lens dual-beam halogen headlamps
- Cargo lamp, integrated with identification lamps that increase intensity when the brakes are applied
- Tow hooks, front (two) - (4x4 only)
- Styleside six-and-a-half-foot box
- Regular Cab
- Accessory Delay
- First-row power windows, one-touch down driver and passenger side
- Rear window with fixed solar tinted glass
- Spare Tire Carrier - rear underframe, winch-type with safety catch
- Fuel Tank - 26-gallon

Power and Handling

- Easy Fuel capless fuel filler
- MyKey
- Auxiliary audio input jack
- AM/FM single CD with clock
- Cloth 40/20/40 front seats
- 60/40 flip-up split rear seat (SuperCab and SuperCrew only)
- Jack - Two-ton capacity
- Electronic six-speed automatic transmission with Tow/Haul mode
- Electronic-Shift-On-the-Fly (ESOF) (4x4)
- Steering - Power rack-and-pinion steering
- AdvanceTrac with Roll Stability Control™ (RSC)
- Front axle - Long-spindle double wishbone, coil-over-shock independent front suspension
- Battery - Maintenance-free 78-AH (750 CCA)
- Trailer sway control
- Fully boxed frame
- 4x2
- 17" machined aluminum wheels with painted accents
- P235/75R17 BSW all-terrain tires
- Springs - Front coil; rear leaf, two-stage variable rate
- Tire Pressure Monitoring System (TPMS)
- 3.7L V6 Engine
- Electronic 6-speed automatic transmission with tow/haul mode

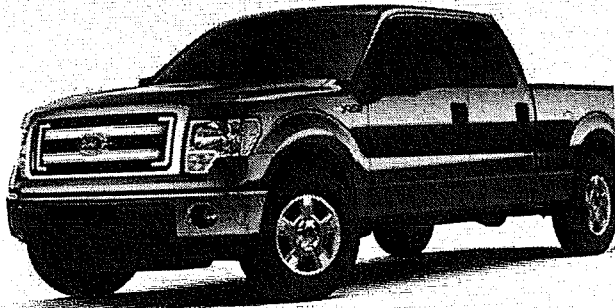
Safety

- Remote Keyless Entry System
- Safety cage
- Airbags - Dual-stage driver and front passenger
- Airbags - front seat-mounted side
- Airbags - Safety Canopy side curtains
- Safety belts - Three-point restraint for all seating positions
- Brakes - Four-wheel disc Anti-lock Braking System (ABS)
- SecuriLock passive anti-theft system
- Belt-Minder System
- Spare tire and wheel lock
- SOS Post-Crash Alert System™
- Perimeter Alarm



Go Further

2014 | FORD F-150



Colors

No Preference, Except No Black Exterior

 Exterior:

 Interior:

Your Selections

Model

- 2014 Ford F-150 XLT SuperCrew®, 6-1/2' Box, 5.0L V8 FFV Engine, Six-Speed Automatic Electronic Transmission w/Tow/Haul Mode, 4X4, 3.55 Non-Limited Slip Axle Ratio

Packages

- 300A
- Power Equipment Group
- Trailer Tow Package

Exterior

- Sterling Gray
- Less Secondary Color
- Fog Lamps
- SelectShift® Automatic Transmission
- Power Black Mirrors
- 3.55 Non-Limited Slip Axle Ratio
- 17" Machined Aluminum Wheels w/Painted Accents
- P265/70R17 OWL All-Terrain Tires

Interior

- Steel Gray

- Color-coordinated Carpet w/Carpeted Floor Mats
- Cruise Control
- My Key®
- Single CD w/ SYNC® Basic
- SYNC®
- Cloth 40/20/40 Front Seat w/Manual Driver Lumbar

Accessories

- None Selected

Standard Features

Interior Features

- Manual air conditioning
- Gauges, easy-to-read
- Customer information display
- Display center (includes warning messages and text functions, e.g. door ajar)
- Outside temperature display
- Dome lamp, rear
- Dome lamp with map light, front (SuperCab and SuperCrew models)
- Fade-to-off interior lighting
- Delayed accessory power
- Power locks with integrated key transmitter keyless entry including auto-lock (SuperCrew on XL)
- Horn, dual-note
- Power point, front
- Power point, rear (SuperCab and SuperCrew models)
- Color-coordinated urethane steering wheel
- Steering wheel, tilt
- Cruise control
- Additional steering wheel-mounted controls
- Intermittent windshield wipers
- Manual day/night rearview mirror
- Deployable cupholder under 20% seat
- Rear door cupholders for SuperCab and SuperCrew
- Visors with covered mirrors for the driver and front passenger
- Grab handles, front passenger-side and for SuperCrew, rear

Exterior Features

- Chrome front and rear step bumpers with body color upper fascia (on Lariat with monotone paint)
- Chrome grille and surround with chrome bar-style insert
- Handles, door and tailgate - black
- Removable tailgate with key lock and lift assist
- Cargo box tie-down hooks, four
- Sideview mirror Skull caps - black
- Side mirrors - Power
- Side mirrors - Integrated spotter mirror, driver's side
- Stone cuffs - Black (Rear only on SVT Raptor)
- Clear lens dual-beam halogen headlamps
- Auto-lamp automatic on-off headlamps
- Fog lamps
- Cargo lamp, integrated with identification lamps that increase intensity when the brakes are applied
- Tow hooks, front (two) - (4x4 only)
- Styleside six-and-a-half-foot box
- Regular Cab
- Accessory Delay
- First-row power windows, one-touch down driver and passenger side
- Rear window with fixed privacy tint glass
- Spare Tire Carrier - rear underframe, winch-type with safety catch
- Fuel Tank - 26-gallon

- Color-coordinated carpet with carpeted floor mats for front and rear
- Easy Fuel[®] capless fuel filler
- MyKey[®]
- Auxiliary audio input jack
- AM/FM single CD with clock
- SYNC[®] with AppLink™
- Cloth 40/20/40 front seats
- 60/40 flip-up split rear seat (SuperCab and SuperCrew[®] only)
- Jack - Two-ton capacity
- SYNC[®] with MyFord[®]

Power and Handling

- Electronic six-speed automatic transmission with Tow/Haul mode
- Electronic-Shift-On-the-Fly (ESOF) (4x4)
- Steering - Power rack-and-pinion steering
- AdvanceTrac[®] with Roll Stability Control™ (RSC[®])
- Front axle - Long-spindle double wishbone, coil-over-shock independent front suspension
- Battery - Maintenance-free 78-AH (750 CCA)
- Trailer sway control
- Fully boxed frame
- 4x2
- 17" machined aluminum wheels with painted accents
- P235/75R17 BSW all-terrain tires
- Springs - Front coil; rear leaf, two-stage variable rate
- Tire Pressure Monitoring System (TPMS)
- 3.7L V6 Engine
- Electronic 6-speed automatic transmission with tow/haul mode

Safety

- Remote Keyless Entry System
- Safety cage
- Airbags - Dual-stage driver and front passenger
- Airbags - front seat-mounted side
- Airbags - Safety Canopy[®] side curtains
- Safety belts - Three-point restraint for all seating positions
- Brakes - Four-wheel disc Anti-lock Braking System (ABS)
- SecuriLock[®] passive anti-theft system
- Belt-Minder[®] System
- SecuriCode™ keyless entry keypad - driver's side
- Spare tire and wheel lock
- SOS Post-Crash Alert System™
- Perimeter Alarm