



**SHEET INDEX**

SHEET NUMBER	SHEET NAME
1.0 General	
G0.01	COVER PAGE AND DRAWING INDEX
G0.02	CODE SUMMARY AND LIFE SAFETY PLANS
G0.03	CODE SUMMARY AND LIFE SAFETY PLANS
G0.04	OCCUPANCY SAFETY DURING CONSTRUCTION
3.0 Architectural	
A0.01	LIST OF ABBREVIATIONS AND SYMBOLS
AD1.01	DEMOLITION PLANS
AD1.51	DEMOLITION REFLECTED CEILING PLANS
A1.00	OVERALL FLOOR PLANS
A1.01	FLOOR PLANS
AX1.01	ASSEMBLIES PLAN
A1.51	REFLECTED CEILING PLANS
A2.51	INTERIOR ELEVATIONS
A2.52	INTERIOR ELEVATIONS
A4.51	ENLARGED PLANS, INTERIOR ELEVATIONS, AND DETAILS
A5.01	ASSEMBLIES
A5.51	DETAILS
A5.52	DETAILS
A6.01	SCHEDULES
A9.01	3D VIEWS
A9.02	3D VIEWS
4.0 Mechanical	
M0.01	LEGEND, GENERAL NOTES & SHEET INDEX
M1.01	DEMOLITION PLAN
M1.21	FLOOR PLANS
M1.41	FIRE PROTECTION PLAN
M5.01	DETAILS
M6.01	SCHEDULES
M7.01	ZONE MAP
5.0 Electrical	
E0.01	LEGEND, GENERAL NOTES & SHEET INDEX
E1.01	DEMOLITION PLAN
E1.10	LIGHTING PLAN
E1.21	POWER DISTRIBUTION
E1.31	LOW VOLTAGE PLAN
E6.01	SCHEDULES
Grand total: 33	

**PROJECT TEAM DIRECTORY**

**OWNER**  
 Oregon State University Capital Planning and Development  
 230 Oak Creek Building Oregon State University  
 Corvallis, OR 97330  
 Contact: Bill Callender  
 E-mail: Bill.Callender@oregonstate.edu

**ARCHITECT**  
 Woofler Bolch Architecture  
 107 SE Washington Street, Suite 228  
 Portland, OR 97214  
 Contact: Miles Woofler  
 Phone: 503 724 0111  
 E-mail: miles@wooflerbolch.com

**INTERIOR DESIGNER**  
 Nossan Norman Design Studio  
 Contact: Angeliqe Nossan  
 p. 503 964 1872  
 E-mail: angeliqe@nossannorman.com

**STRUCTURAL ENGINEER**  
 KPFF Structural Engineers  
 111 SW 5th Avenue #2500  
 Portland, OR 97205  
 Contact: Josh Richards  
 Phone: 503 764 0532  
 E-Mail: Josh.Richards@kpff.com

**MEP ENGINEER**  
 Systems West Engineers  
 725 A Street  
 Springfield, OR 97477  
 Contact: Nate Jenkins  
 Phone: 541 342 7210  
 njenkins@SystemsWestEngineers.com



CONSTRUCTION DOCUMENTS

**Oregon State University**  
 425 SW 26th St.  
 Corvallis OR  
 97331-3301

**OSU Dixon Recreation Center Improvements Projects**  
 425 SW 26th St.  
 Corvallis OR  
 97331-3301

Date 02/03/23

Project No. 220301

Revisions

NO.	DESCRIPTION	DATE

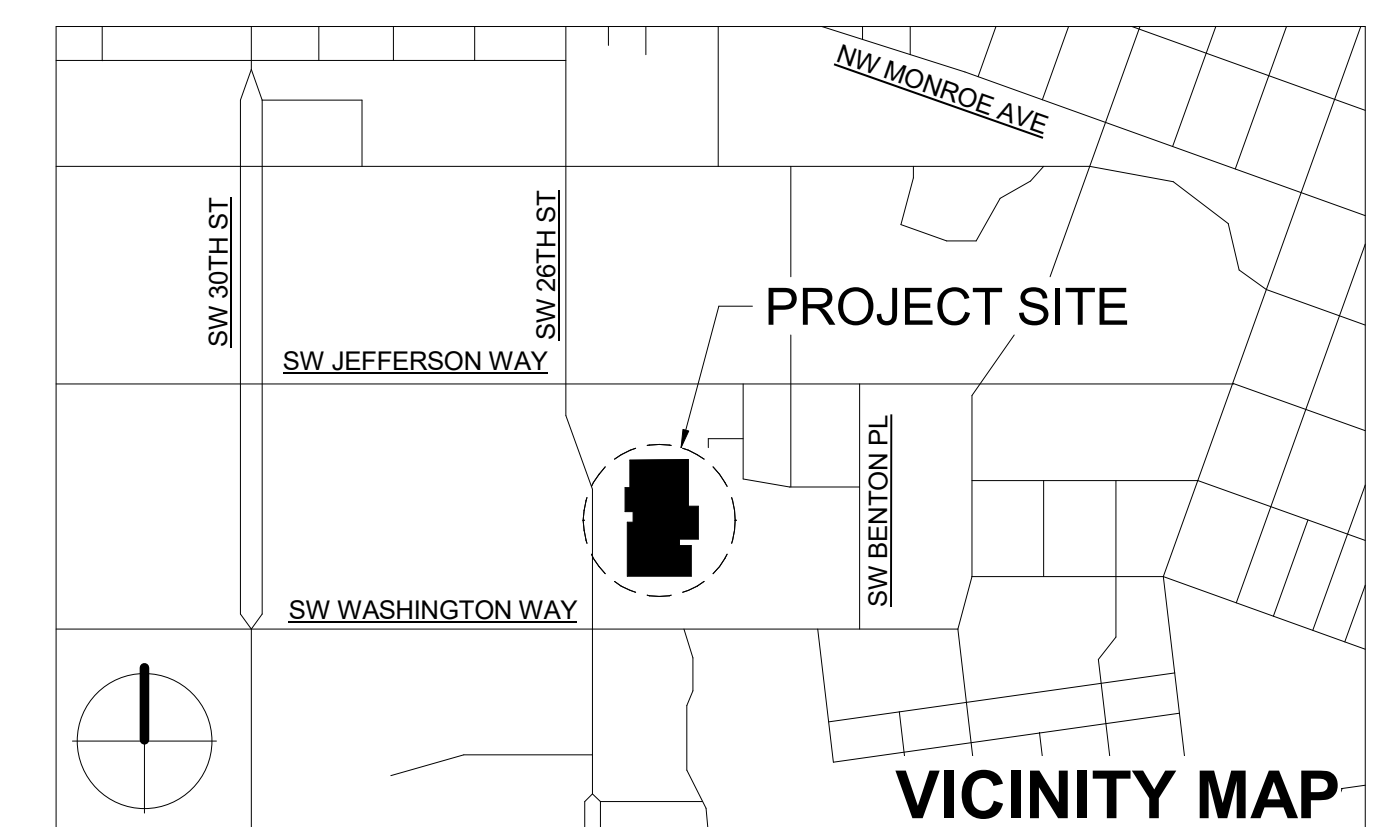
COVER PAGE AND DRAWING INDEX

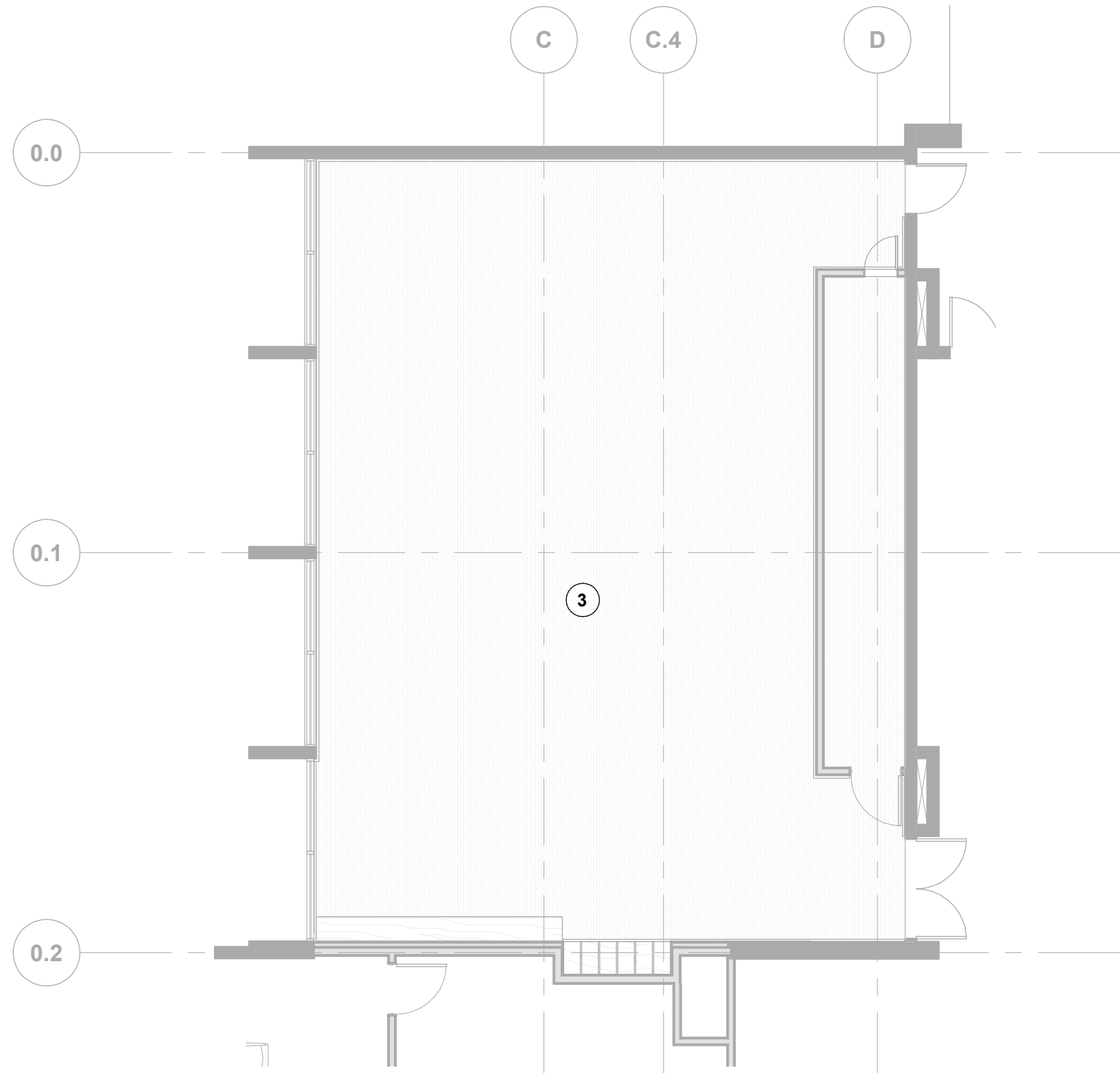
**G0.01**

**OSU DIXON RECREATION CENTER IMPROVEMENTS PROJECTS**  
 425 SW 26th Street  
 Corvallis, OR 97331

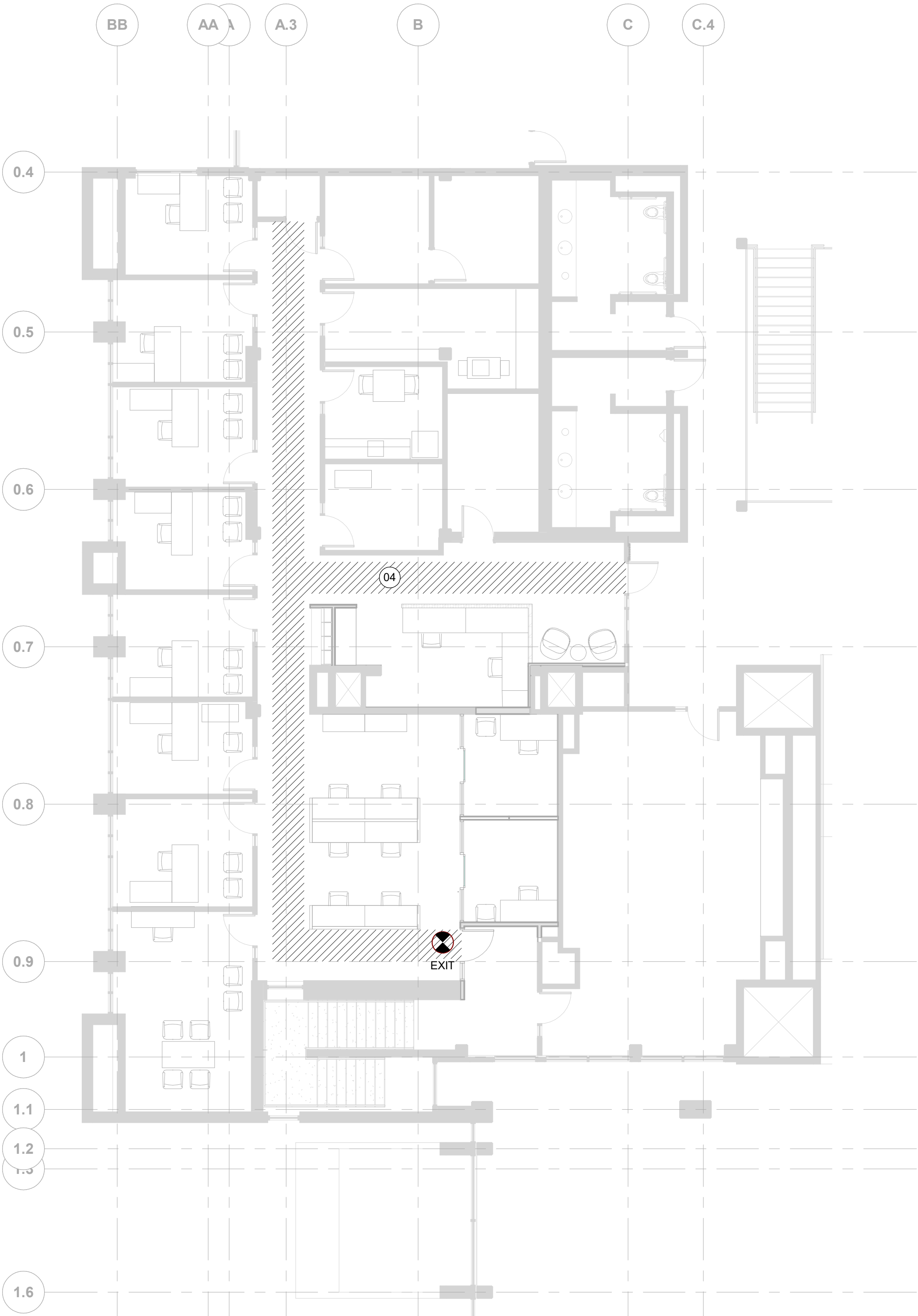
CONSTRUCTION DOCUMENTS

FEBRUARY 03, 2023

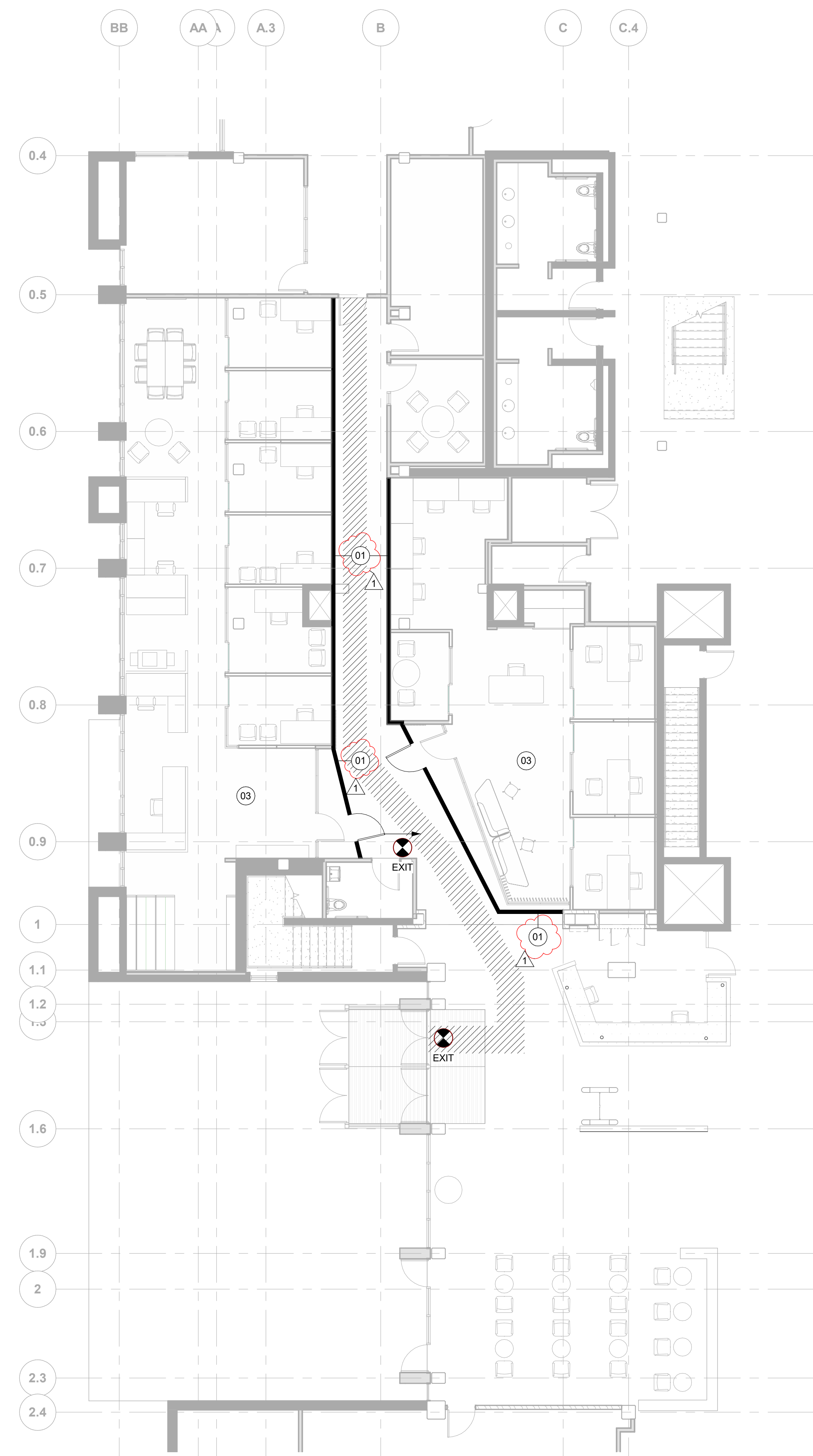




3 SAFETY DURING CONSTRUCTION PLAN - LEVEL 02 - MIND BODY STUDIO  
1/8" = 1'-0"



2 SAFETY DURING CONSTRUCTION PLAN - LEVEL 02 - ADMINISTRATIVE SUITE  
1/8" = 1'-0"



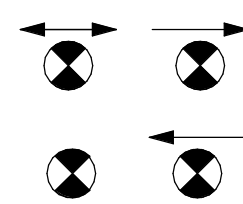


1 SAFETY DURING CONSTRUCTION PLAN - LEVEL 01 - WEST ENTRY AREA  
1/8" = 1'-0"

### OCCUPANTS SAFETY DURING CONSTRUCTION SUMMARY

1. BUILDING WILL REMAIN OCCUPIED DURING CONSTRUCTION. CONTRACTOR TO ENSURE CONSTRUCTION ACTIVITIES DO NOT IMPACT LIFE SAFETY OF BUILDING OCCUPANTS.
2. OCCUPANCY SAFETY PLAN WILL BE IN EFFECT FOR THE DURATION OF PERMITTED CONSTRUCTION.
3. CONTRACTOR TO PROVIDE ALL TEMPORARY CONSTRUCTION PARTITIONS. TEMPORARY PARTITIONS OR BARRIERS ARE TO BE CONSTRUCTED UTILIZING METAL STUD FRAMING AND 5/8" GYPSUM BOARD. CAVITY IS TO BE FILLED WITH ACOUSTICAL BATT INSULATION. WALL IS TO BE FULL HEIGHT TO STRUCTURE ABOVE.
4. ALL OPENINGS IN TEMPORARY PARTITIONS ARE TO BE SECURED WITH DOORS AND LOCKS.
5. STUDENTS, STAFF, AND PUBLIC ARE NOT ALLOWED IN WORK ZONES DURING CONSTRUCTION UNLESS ESCORTED BY GENERAL CONTRACTOR STAFF. APPROVED PERSONAL PROTECTIVE EQUIPMENT MUST BE WORN BEFORE ENTERING WORK ZONES.
6. EGRESS PATHS MUST BE MAINTAINED DURING CONSTRUCTION. TEMPORARY EXITS AND DIRECTIONAL SIGNAGE TO BE PROVIDED BY CONTRACTOR IN AREAS WHERE EXISTING EGRESS ROUTES ARE ALTERED. LIGHTING/EMERGENCY LIGHTING MUST BE PROVIDED TO MAINTAIN REQUIRED LIGHT LEVELS IN PATH OF EGRESS.
7. FIRE ALARM AND FIRE SPRINKLER SYSTEMS ARE TO REMAIN ONLINE IN OCCUPIED SPACES DURING CONSTRUCTION. ANY SHUT DOWNS OR INTERRUPTED TO BE COORDINATED WITH OWNER PRIOR TO OCCURRING.
8. ALL TEMPORARY DOORS ARE TO HAVE A 3'-0" X 6'-8" LEAF.

#### LEGEND

-  PATH OF EGRESS TRAVEL
-  TEMPORARY PARTITIONS
-  EXIT SIGNS

#### KEY NOTES

1. TEMPORARY PARTITION. SEE OCCUPANTS SAFETY DURING CONSTRUCTION SUMMARY. CONTRACTOR TO COORDINATE LOCATION WITH EXISTING OVERHEAD UTILITIES. PATCH AND REPAIR FINISHED TO REMAIN.
2. AT LOCATIONS WHERE TEMPORARY PARTITIONS ARE IN THE SAME LOCATION AS FINAL WALLS, CONTRACTOR MAY ELECT TO BUILD FINAL WALL AS CONSTRUCTION BARRIER.
3. SPACE TO REMAIN UNOCCUPIED DURING CONSTRUCTION.
4. SPACE TO REMAIN UNOCCUPIED DURING CONSTRUCTION. COORDINATE ACTIVITIES WITH OWNER.



CONSTRUCTION DOCUMENTS

Oregon State University  
425 SW 26th St.  
Corvallis OR 97331-3301

OSU Dixon Recreation Center Improvements Projects  
425 SW 26th St.  
Corvallis OR 97331-3301

Date 02/03/23  
Project No. 220301

NO.	DESCRIPTION	DATE
1	ADD. 1	03/16/23

OCCUPANCY SAFETY DURING CONSTRUCTION

**DRAWING SYMBOLS**

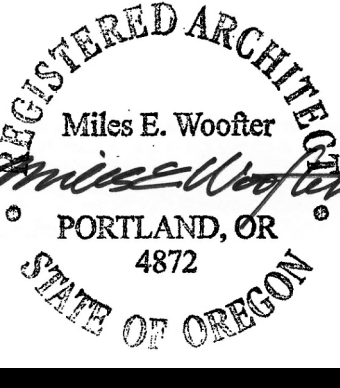
	<b>BUILDING SECTION</b>
	<b>WALL SECTION</b>
	<b>DETAIL CALL OUT</b>
	<b>EXTERIOR ELEVATION</b>
	<b>INTERIOR ELEVATION</b>
	<b>PARTITION TYPE</b>
	<b>DOOR TAG</b>
	<b>ELEVATION TAG</b>
	<b>NORTH ARROW</b>
	<b>ROOM NAME AND NUMBER</b>
	<b>KEYNOTE</b>
	<b>REVISION REFERENCE ONLY MOST RECENT REVISION SHOWN CLOUDED</b>
	<b>PROPERTY LINE</b>
	<b>FINISH TYPE</b>
	<b>BREAK LINE</b>
	<b>GRID LINE</b>
	<b>FLOOR TYPE</b>
	<b>CEILING TYPE</b>

**MATERIAL SYMBOLS**

	<b>CIP CONCRETE</b>
	<b>PRECAST CONCRETE</b>
	<b>CONCRETE MASONRY UNIT</b>
	<b>BRICK</b>
	<b>STEEL</b>
	<b>ALUMINUM</b>
	<b>GYPSUM WALL BOARD</b>
	<b>LATH AND PLASTER</b>
	<b>GRAVEL</b>
	<b>RIGID INSULATION</b>
	<b>BATT INSULATION</b>
	<b>FIREPROOFING SAND</b>
	<b>SOLID MORTAR</b>
	<b>FIRESTOPPING</b>
	<b>EARTH</b>
	<b>CONTINUOUS WOOD FRAMING</b>
	<b>WOOD BLOCKING</b>
	<b>PLYWOOD</b>
	<b>PARTICLE BOARD</b>
	<b>SOLID WOOD</b>

**ABBREVIATIONS**

&	AND	LAM	LAMINATE
L	ANGLE	LAV	LAVATORY
@	AT	LINO	LINOLEUM
Ø	CENTERLINE	LT	LIGHT
±	DIAMETER OR ROUND	LY	LOUVER
±	PLUS / MINUS	MATL	MATERIAL
°	DEGREES	MAX	MAXIMUM
#	POUND OR NUMBER	MECH	MECHANICAL
>	GREATER THAN	MEMB	MEMBRANE
<	LESS THAN	MFR	MANUFACTURER
A	ALIGN	MIN	MINIMUM
AB	ANCHOR BOLT / ACOUSTICAL BOARD	MISC	MISCELLANEOUS
A/C	AIR CONDITIONING	MTD	MOUNTED
ACST	ACOUSTICAL	MTL	METAL
AD	AREA DRAIN	MULL	MULLION
ADDL	ADDITIONAL	(N)	NEW
ADJ	ADJUSTABLE OR ADJACENT	NIC	NOT IN CONTRACT
ADJ	ADJUSTABLE OR ADJACENT	NO	NUMBER
AF	ABOVE FINISHED FLOOR	NOI	NOMINAL
AGGR	AGGREGATE	NNO	NOT NORMALLY OCCUPIED
ALUM	ALUMINUM	NTS	NOT TO SCALE
APPROX	APPROXIMATE	OA	OVERALL
ARCH	ARCHITECTURAL	OC	ON CENTER
BD	BOARD	OD	OUTSIDE DIAMETER
BLDG	BUILDING	OF	OWNER FURNISHED -
BLKG	BLOCKING	OF	CONTRACTOR INSTALLED
BM	BEAM	OF	OWNER FURNISHED
BO	BOTTOM OF	OF	OWNER INSTALLED
BOT	BOTTOM	OPNG	OPENING
CAB	CABINET	OPP	OPPOSITE
CB	CATCH BASIN	P, PTD	PAINT(ED)
CBB	CEMENT BACKER BOARD	PBD	PARTICLE BOARD
CEM	CEMENT	PERF	PERFORATED
CER	CERAMIC	PL	PROPERTY LINE
CFCI	CONTRACTOR FURNISHED	PLAM	PLASTIC LAMINATE / PLATE
CFCI	CONTRACTOR INSTALLED	PLAS	PLASTER
CIP	CAST IN PLACE	PLYWD	PLYWOOD
CJ	CONSTRUCTION OR CONTROL JOINT	PNL	PANEL
CONSTR	CONSTRUCTION	PR	PAIR
CONT	CONTINUOUS	PT	POINT
CPT	CARPET	PTN	PARTITION
CT	CERAMIC TILE	QT	QUARRY TILE
CTR	CENTER	R	RADIUS OR RISER
DBL	DOUBLE	RR	REST ROOM
DET	DETAIL	RA	RETURN AIR
DEMO	DEMOLITION, DEMOLISH	RB	RESILIENT BASE
DIA	DIAMETER	RCP	REFLECTED CEILING PLAN(S)
DIM	DIMENSION	RDF	ROOF DRAIN
DN	DOWN	REF	REFRIGERATOR
DR	DOOR	REINF	REINFORCED
DS	DOWNSPOUT	REQ'D	REQUIRED
DWG	DRAWING	RESIL	RESILIENT
EA	EACH	RM	ROOM
EL	ELEVATION	RO	ROUGH OPENING
ELEC	ELECTRICAL	RTU	ROOF TOP UNIT
EOS	EDGE OF SLAB	RVS	REVERSED
EP	ELECTRICAL PANEL	RWL	RAIN WATER LEADER
EQ	EQUAL	SC	SOLID CORE
EW	ELECTRIC WATER HEATER	SCHED	SCHEDULE
EXIST, (E)	EXISTING	SD	STORM DRAIN
EXT	EXTERIOR	SDT	STATIC-DISSIPATIVE TILE
FAN	FAN COIL UNIT	SECT	SECTION
FD	FLOOR DRAIN	SHR	SHOWER
FDTN	FOUNDATION	SHT	SHEET
FE	FIRE EXTINGUISHER	SIM	SIMILAR
FEC	FIRE EXTINGUISHER CABINET	SKLT	SKYLIGHT
FIN	FINISH	SPEC	SPECIFICATION
FIN FLR	FINISH FLOOR	SS	SOLID-SURFACING
FLR	FLOOR	SST	STAINLESS STEEL
FOC	FACE OF CONCRETE	ST	STONE
FOF	FACE OF FINISH	STC	SOUND TRANSMISSION CLASS
FOS	FACE OF STUD	STD	STANDARD
FP	FIREPROOF	STL	STEEL
FT	FOOT OR FEET	STOR	STORAGE
FTG	FOOTING	STRUCT	STRUCTURAL
G	GROUND	TR	TREAD
GAGE	GAGE, GAUGE	THK	THICKNESS
GALV	GALVANIZED	THRU	THROUGH
GB	GRAB BAR	TO	TOP OF
GL	GLASS	TOC	TOP OF CONCRETE/CURB
GR	GRADE	TOL	TOLERANCE
GWB	GYPSUM WALL BOARD	TOS	TOP OF STEEL
GWB-IR	GYPSUM (WALL)BOARD - IMPACT RESISTANT	TOW	TOP OF WALL
GWB-WR	GYPSUM (WALL)BOARD - WATER RESISTANT	TYP	TYPICAL
HB	HOSE BIBB	UNO	UNLESS NOTED OTHERWISE
HC	HOLLOW CORE	UNON	UNLESS OTHERWISE NOTED
HDWD	HARDWOOD	VIF	VERIFY IN FIELD
HDWR	HARDWARE	W/	WITH
HM	HOLLOW METAL	WC	WATER CLOSET
HOR,	HORIZ HORIZONTAL	WD	WOOD
HR	HOUR	WDF	WOOD FLOOR
HT	HEIGHT	WDP	WOOD PANELING
HVAC	HEATING, VENTILATING & AIR CONDITIONING	WH	WATER HEATER
ID	INSIDE DIAMETER	WM	WIRE MESH
IN	INCHES	W/O	WITHOUT
INSUL	INSULATION	WP	WATERPROOF
JAN	JANITOR	WWF	WELDED WIRE FABRIC
JS	JOINT SEALANT		
JT	JOINT		



**CONSTRUCTION DOCUMENTS**

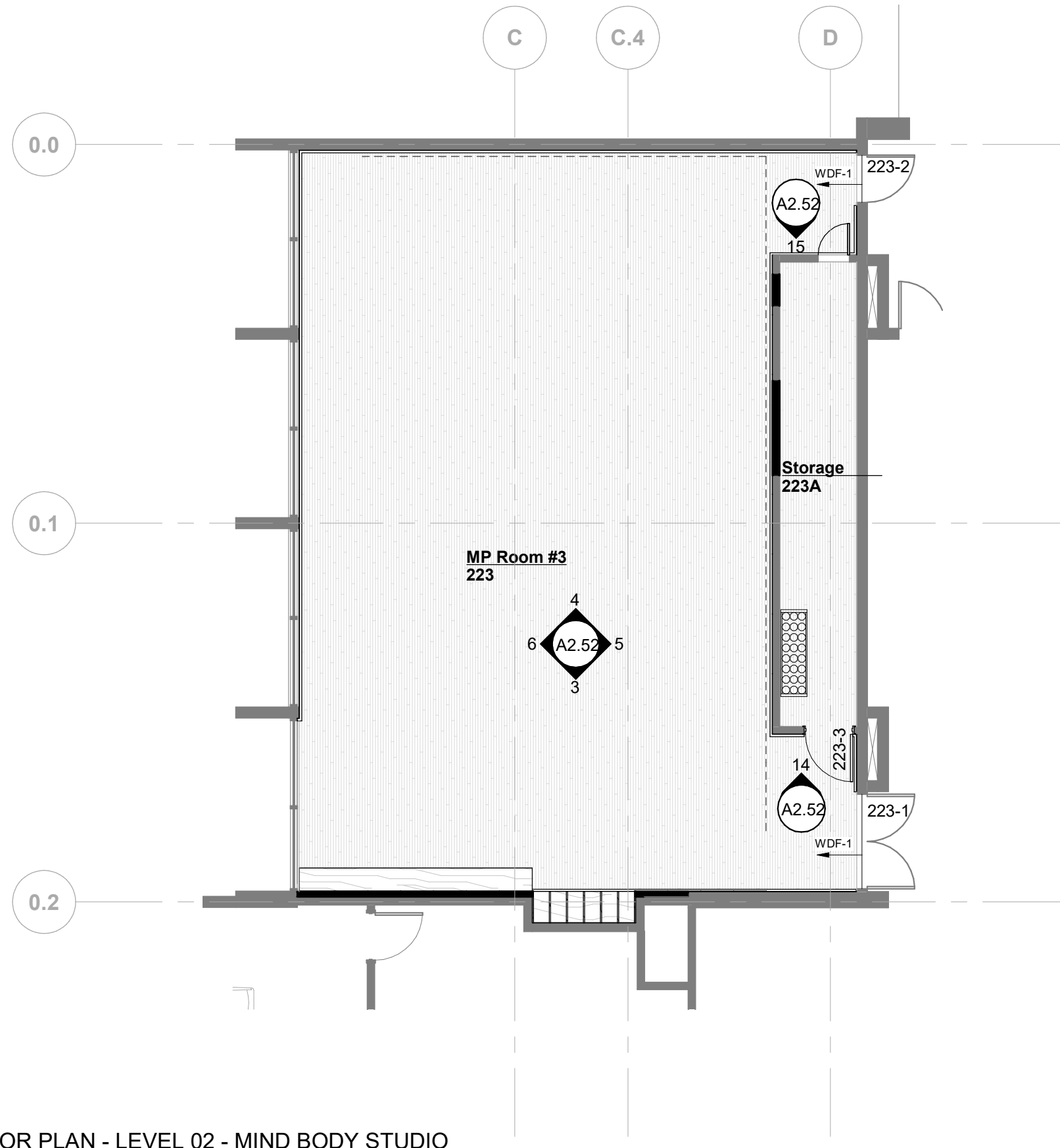
**Oregon State University**  
425 SW 26th St.  
Corvallis OR  
97331-3301

**OSU Dixon Recreation Center Improvements Projects**  
425 SW 26th St.  
Corvallis OR  
97331-3301

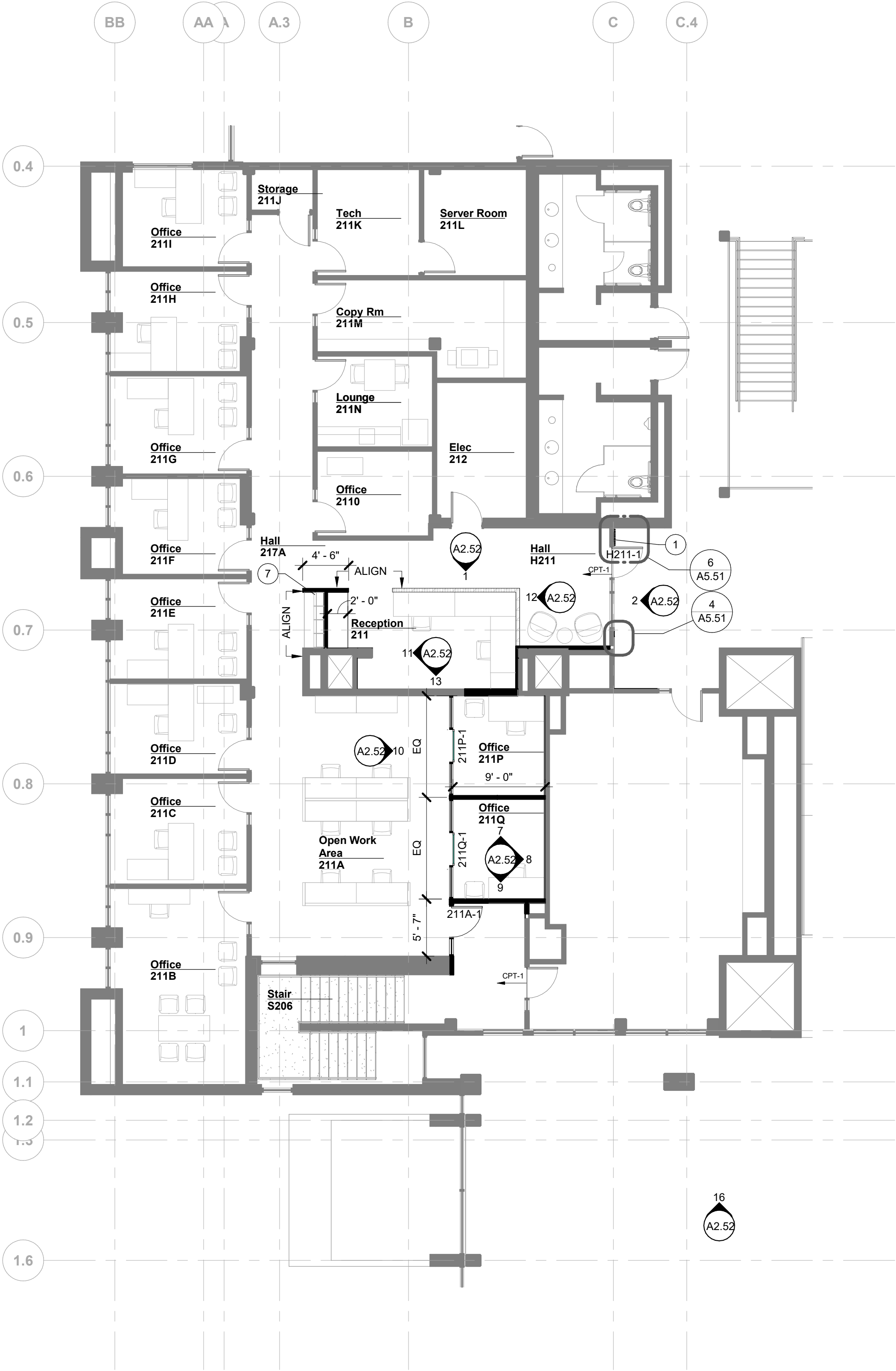
Date 02/03/23  
Project No. 220301

Revisions		
NO.	DESCRIPTION	DATE
1	ADD. 1	03/16/23

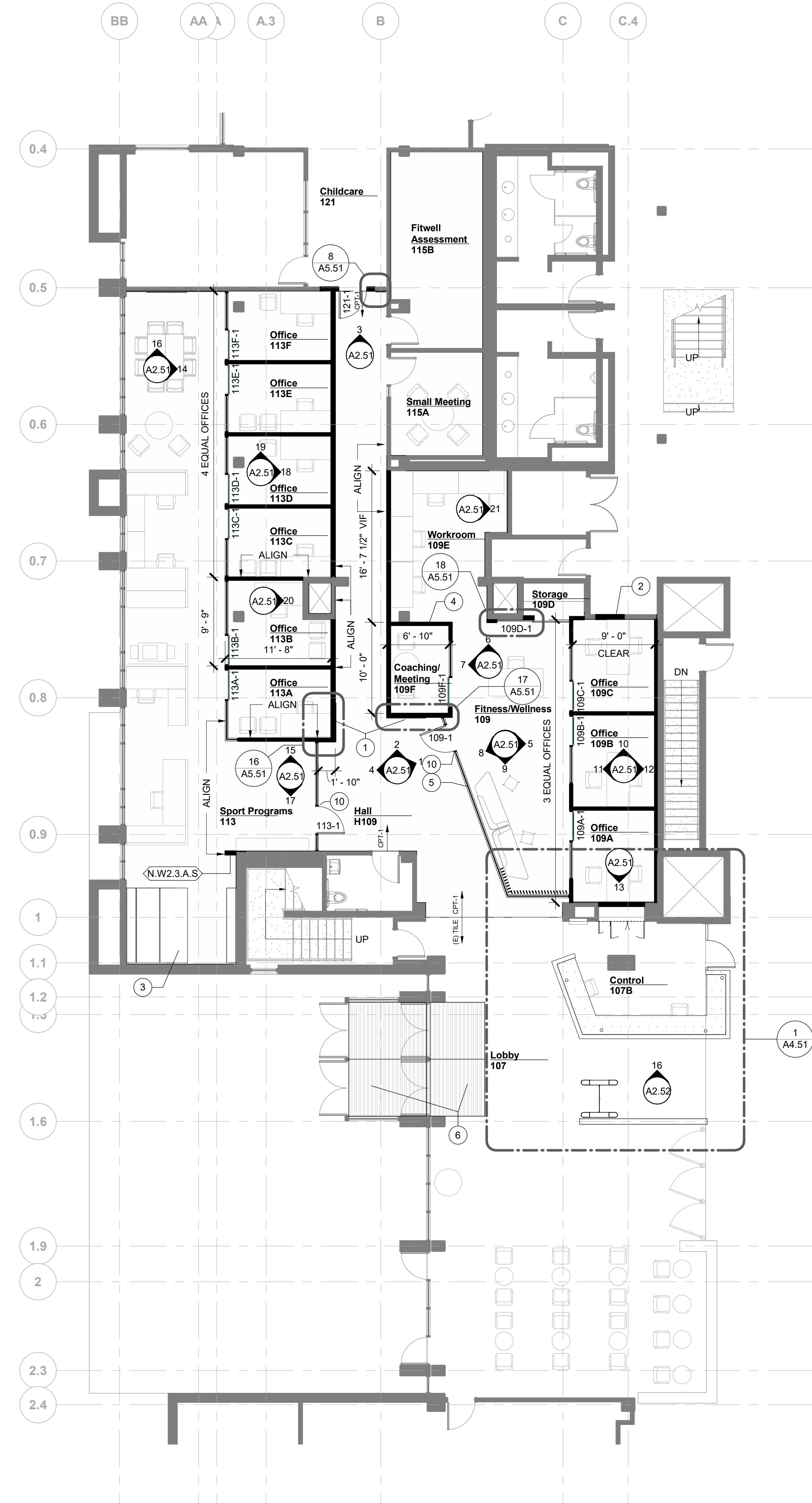
LIST OF ABBREVIATIONS AND SYMBOLS



3 FLOOR PLAN - LEVEL 02 - MIND BODY STUDIO  
1/8" = 1'-0"



2 FLOOR PLAN - LEVEL 02 - ADMINISTRATIVE SUITE  
1/8" = 1'-0"



1 FLOOR PLAN - LEVEL 01 - WEST ENTRY AREA  
1/8" = 1'-0"

FLOOR PLAN NOTES

1. REFER TO A0.01 FOR GENERAL USE SYMBOLS, MATERIALS, AND ABBREVIATIONS
2. REFER TO ASSEMBLY SHEETS FOR WALL & FLOOR ASSEMBLIES
3. STUD SIZES TYPICALLY USED THROUGHOUT PROJECT ARE SHOWN - REFER TO METAL STUD SIZE ON WALL ASSEMBLIES SHEET FOR REQUIRED SIZES. SEE ASSEMBLY NOTES FOR GAUGES AND SPACING. COORDINATE BLOCKING AND BRACING REQUIREMENTS FOR WALL HUNG ITEMS.
4. DIMENSIONS SHOWN ARE TO FACE OF GYPSUM BOARD FINISH, UNLESS OTHERWISE NOTED. REFER TO ENLARGED PLANS FOR DIMENSIONS WITHIN THOSE AREAS.
5. CONTRACTOR TO VERIFY ALL DIMENSIONS IN THE FIELD. IF ANY DISCREPANCIES ARISE BETWEEN EXISTING CONDITIONS AND DESIGN DOCUMENTS, CONTRACTOR SHALL NOTIFY ARCHITECT.
6. FURNITURE IS SHOWN FOR REFERENCE ONLY IN HALFTONE. NOT IN CONTRACT.
7. SEE AX1.01 FOR WALL AND FLOOR ASSEMBLIES.

FLOOR PLAN LEGEND

- EXISTING
- NEW CONSTRUCTION
- ||||| WOOD SLAT WALL

KEYNOTES - FLOOR PLAN

- 1 WALL-MOUNTED WOOD SLATS (BY CONTRACTOR) AND SUITE NAME SIGNAGE (BY OTHERS). SEE DETAILS ON A5.51.
- 2 INFILL (E) DOOR OPENING, MATCH (E) WALL ASSEMBLY
- 3 MANUAL MOBILE STORAGE SHELVING UNITS
- 4 IIA WALL TO BYPASS COLUMN
- 5 BUTT-GLAZED FLOOR-TO-CEILING GLAZING AT SUITES
- 6 (N) ENTRANCE FLOOR GRILLE (EFG-1)
- 7 (E) MAILBOXES AND CASEWORK TO REMAIN
- 9 (N) ENTRANCE FLOOR GRILLE (EFG-1)
- 10 CARD READER ACCESS



CONSTRUCTION DOCUMENTS

Oregon State University  
425 SW 26th St.  
Corvallis OR  
97331-3301

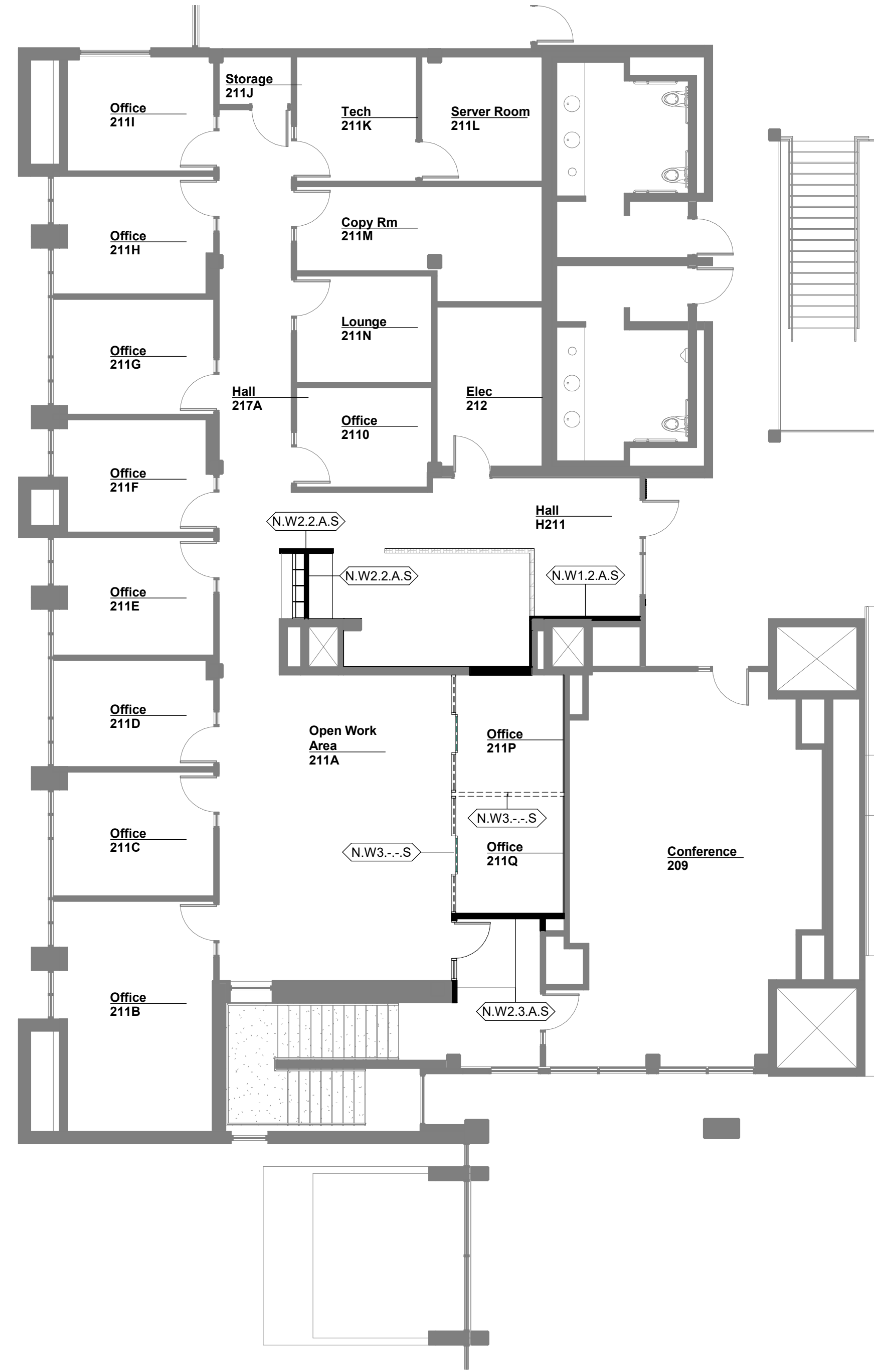
OSU Dixon Recreation Center  
Improvements Projects  
425 SW 26th St.  
Corvallis OR  
97331-3301

Date 02/03/23  
Project No. 220301

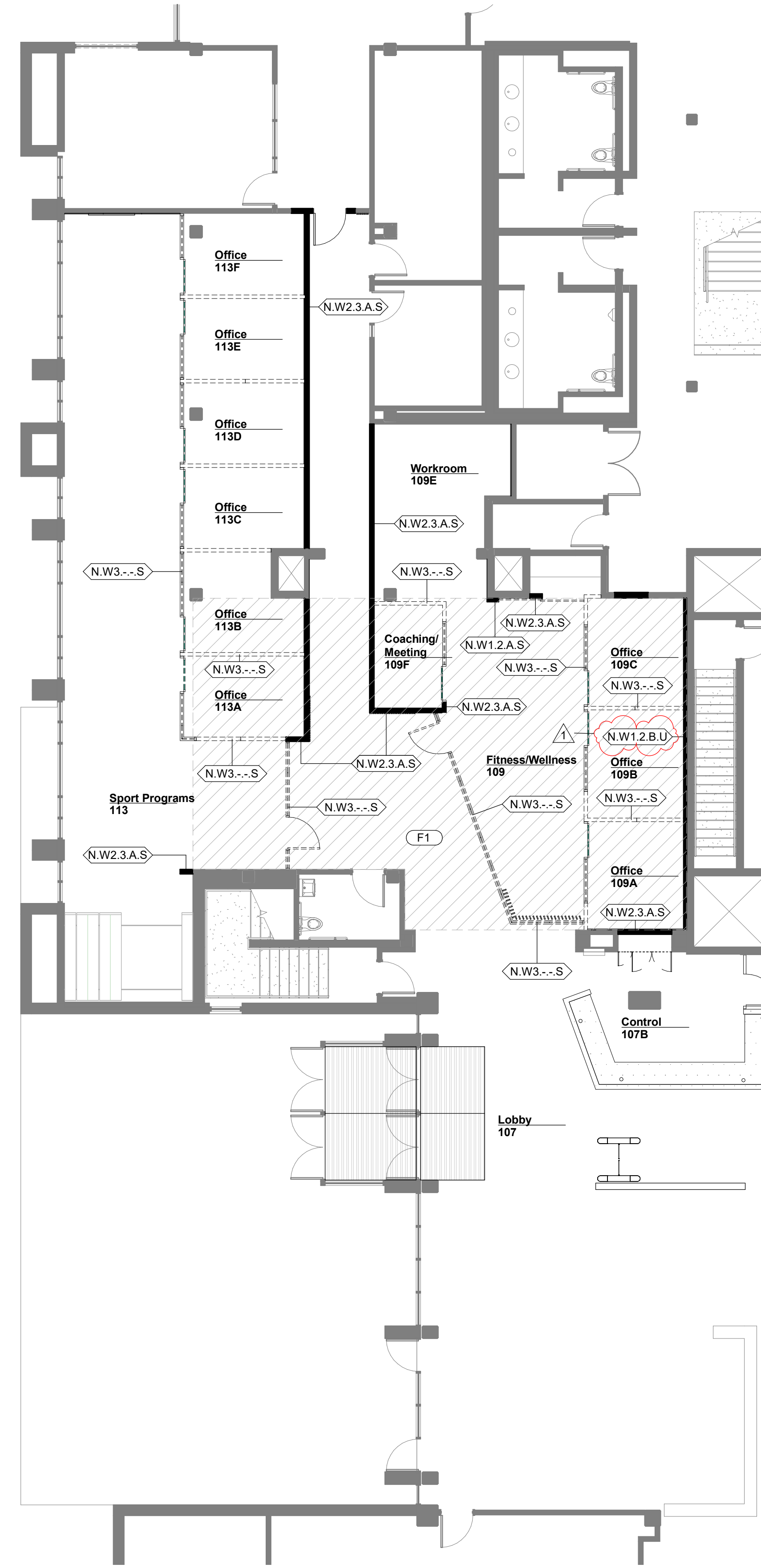
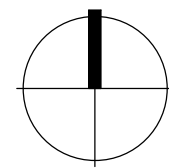
Revisions

NO.	DESCRIPTION	DATE
1	ADD. 1	03/16/23

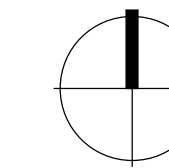
FLOOR PLANS



② PROPOSED PLAN - LEVEL 02 - INTEGRATED INTERIOR ASSEMBLIES DIAGRAM  
1/8" = 1'-0"



① PROPOSED PLAN - LEVEL 01 - INTEGRATED INTERIOR ASSEMBLIES DIAGRAM  
1/8" = 1'-0"



**INTEGRATED INTERIOR ASSEMBLIES DIAGRAM LEGEND**

- EXISTING
- NEW CONSTRUCTION
- INTEGRATED INTERIOR ASSEMBLY
- FLOOR INFILL, SEE F1/A5.01

**w+b**  
woofler bolch architecture  
107 SE Washington Street, Suite 228  
Portland, OR 97214  
503.724.0111

REGISTERED ARCHITECTS  
Miles E. Woofler  
Miles E. Woofler  
PORTLAND, OR  
4872  
STATE OF OREGON

CONSTRUCTION DOCUMENTS

**Oregon State University**  
425 SW 26th St.  
Corvallis OR  
97331-3301

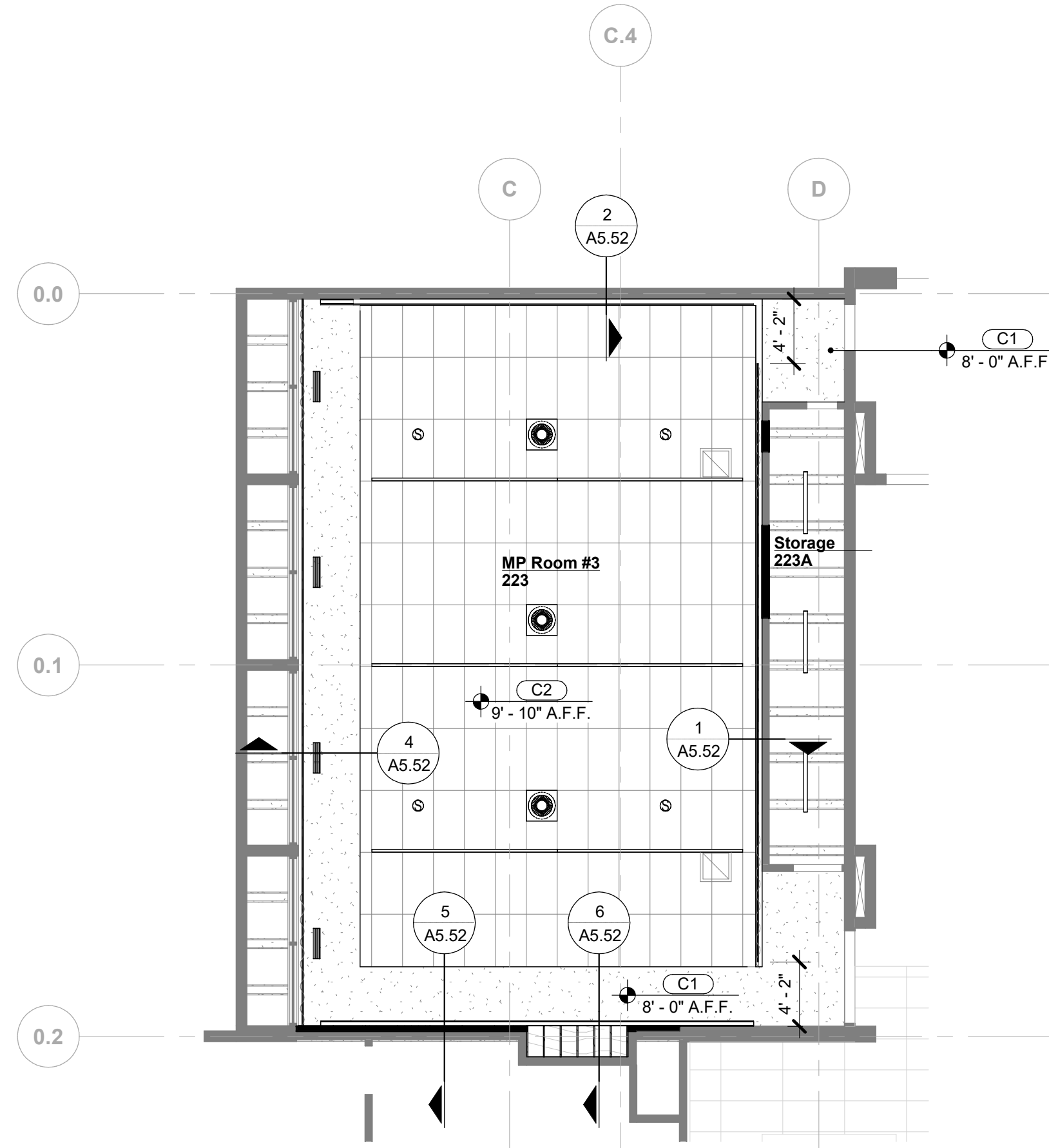
**OSU Dixon Recreation Center Improvements Projects**  
425 SW 26th St.  
Corvallis OR  
97331-3301

Date 02/03/23  
Project No. 220301

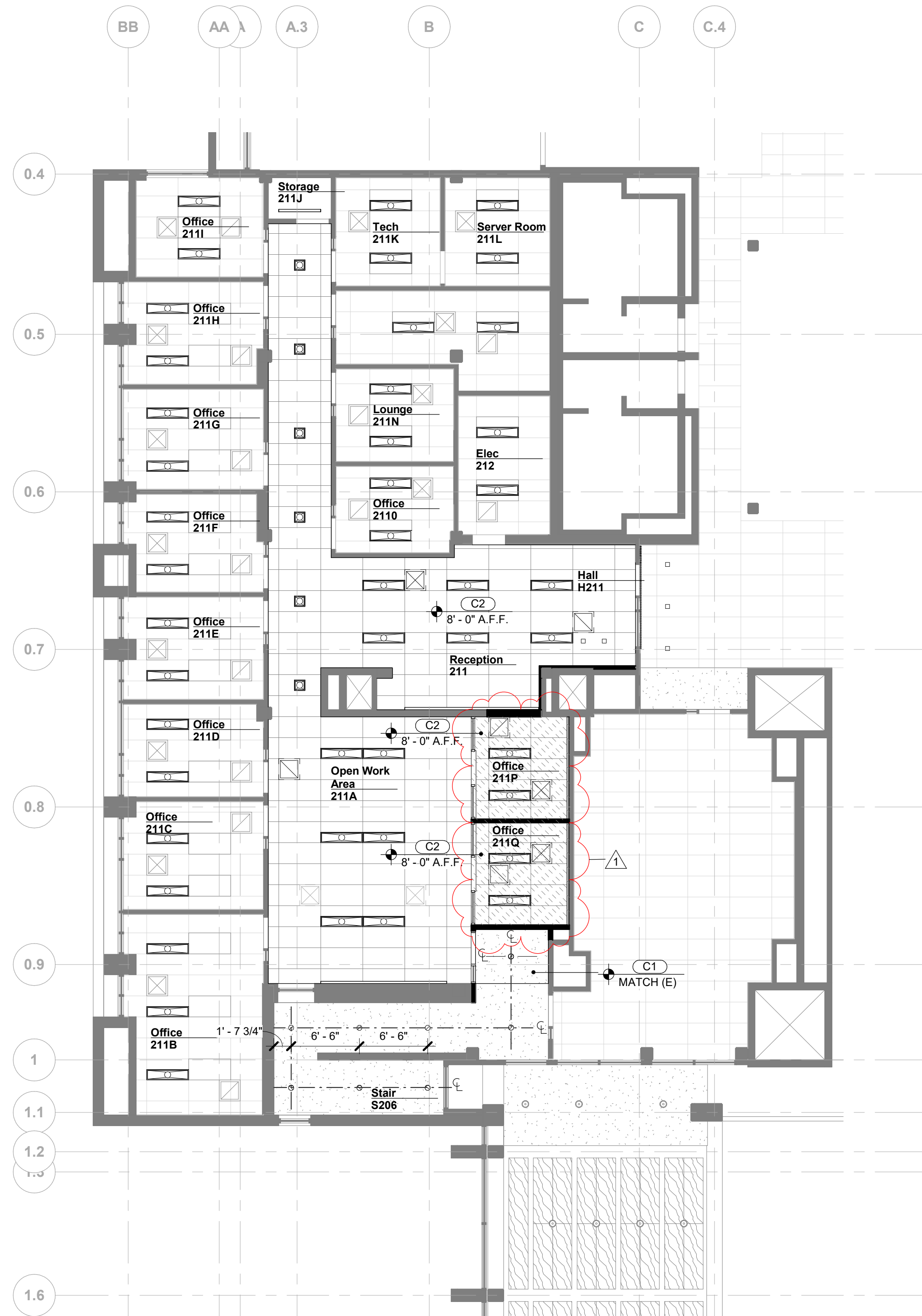
Revisions

NO.	DESCRIPTION	DATE
1	ADD. 1	03/16/23

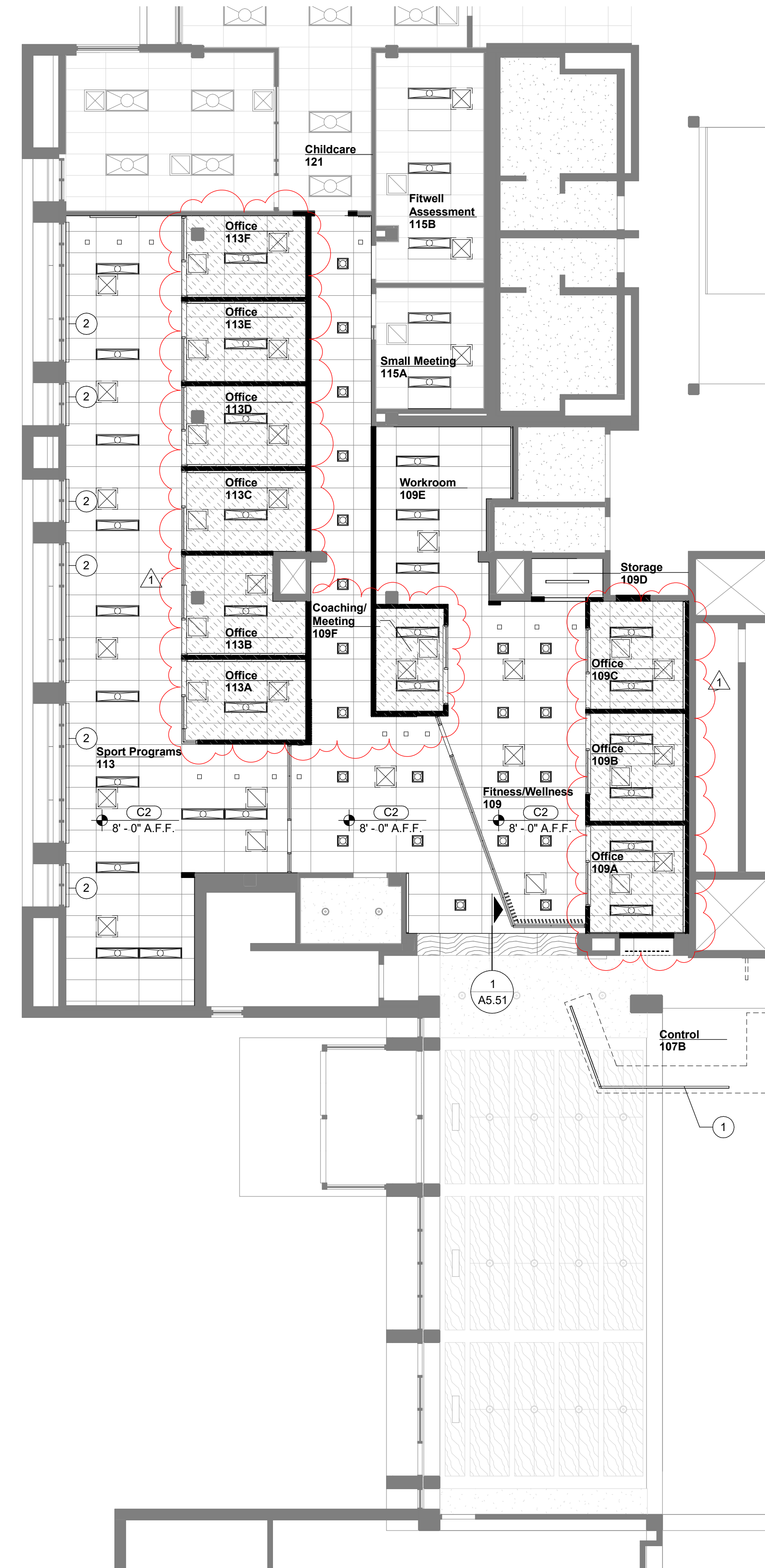
ASSEMBLIES PLAN



3 REFLECTED CEILING PLAN - LEVEL 02 - MIND BODY STUDIO  
1/8" = 1'-0"



2 REFLECTED CEILING PLAN - LEVEL 02 - ADMIN SUITE  
1/8" = 1'-0"

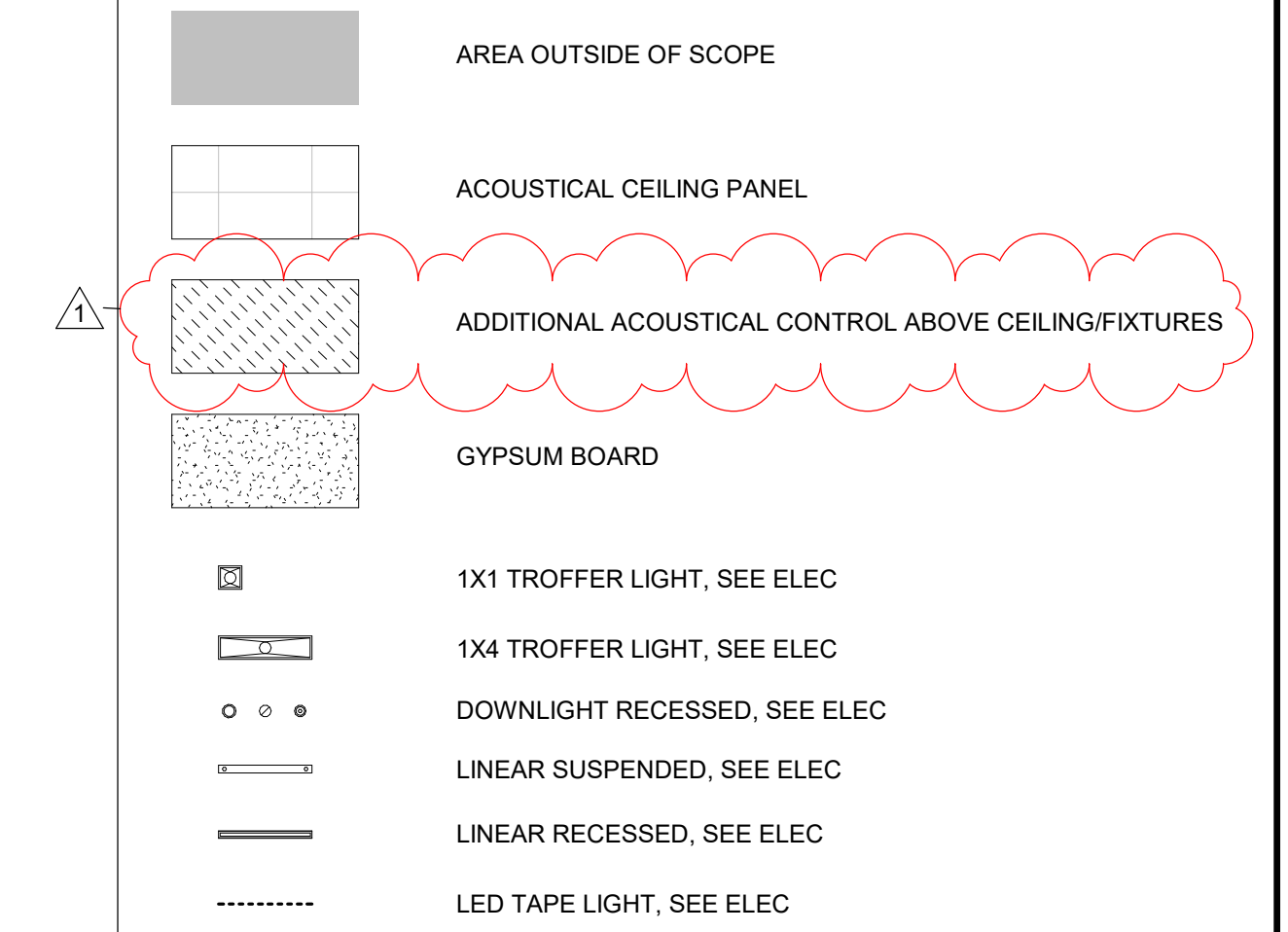


1 REFLECTED CEILING PLAN - LEVEL 01 - WEST ENTRY AREA  
1/8" = 1'-0"

**CEILING PLAN NOTES**

1. REFER TO ASSEMBLY SHEETS FOR CEILING ASSEMBLIES.
2. REFER TO FINISH SCHEDULE FOR FINISHES AND NOTES AT CEILINGS.
3. ALIGN LIGHT FIXTURES, SPEAKERS, SMOKE DETECTORS, SPRINKLER HEADS AND OTHER DEVICES AS INDICATED ON THE DRAWINGS. VERIFY PLACEMENT WITH ARCHITECT FOR DEVICES AND FIXTURES NOT SHOWN.
4. PROVIDE METAL STUD OR STEEL DIAGONAL BRACING TO STRUCTURE ABOVE CEILING AT 4'-0" ON CENTER MAXIMUM WHERE REQUIRED AT SOFFITS, COVES, PARTITIONS, AND OTHER ASSEMBLIES WHETHER OR NOT INDICATED ON DRAWINGS.

**CEILING LEGEND**



**KEYNOTES - CEILING PLANS**

1. SUSPEND LIGHT FIXTURE FROM LEVEL 2 AND LEVEL 3 CEILINGS. COORDINATE WITH (E) SUSPENDED ARTWORK - VIF
2. (E) ROLLER SHADES AND SHADE POCKETS REINSTALLED

Revisions

NO.	DESCRIPTION	DATE
1	ADD. 1	03/16/23

INTERIOR FINISH SCHEDULE

Table with columns: Revision, Room, Room Name, Floor Finish, Base Finish, Walls (North, East, South, West), Ceiling Finish, Comments.

COMMENTS: 1. EXISTING TILE FLOORING, PATCH AND REPAIR AS REQUIRED. SEE DRAWINGS FOR MORE INFORMATION. 2. EXISTING 2-3/4" SLAB RECESS, INFILL SUBFLOOR WITH RIGID FOAM AND 1" MAXIMUM OF LIGHTWEIGHT HYDRAULIC CEMENT OVERLAYMENT. SEE DRAWINGS AND SPECIFICATIONS FOR MORE INFORMATION.

DOOR SCHEDULE

Table with columns: Revision, Door Number, Room Name, Hardware Set, Fire Rating, Door Profile, Width, Height, Material, Finish, Glass Type, Frame Profile, Material, Finish, Comments.

DOOR SCHEDULE - INTEGRATED INTERIOR ASSEMBLIES

Table with columns: Revision, Door Number, Room Name, Hardware Set, Fire Rating, Door Profile, Width, Height, Material, Finish, Glass Type, Frame Profile, Material, Finish, Comments.

GENERAL NOTES

- 1. REFER TO HARDWARE SCHEDULE IN SPECIFICATIONS. COORDINATE HARDWARE WITH DOOR PROFILE, SIZE, AND CONSTRUCTION. 2. PAINT INTERIOR HOLLOW METAL DOORS AND FRAMES TO MATCH COLOR OF ADJACENT WALL U.N.O. ON DOOR SCHEDULE.

DOOR ABBREVIATIONS

- ALUM ALUMINUM
ANO CLR CLEAR ANODIZED ALUMINUM
CLR SEAL CLEAR SEAL

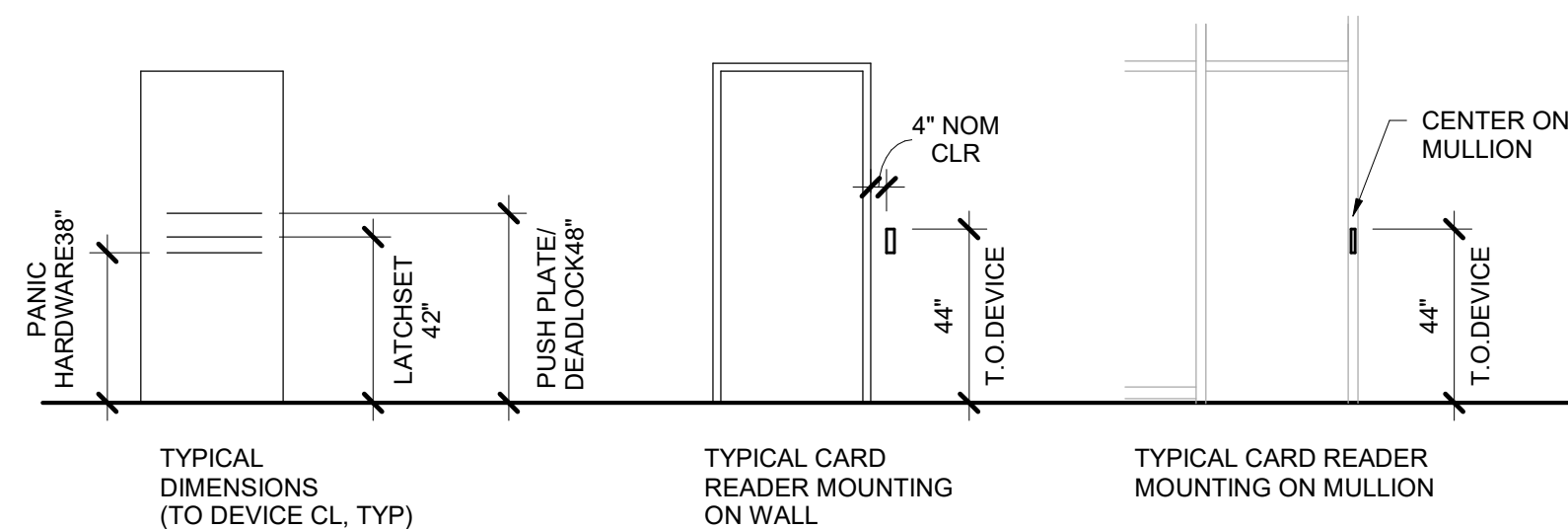
DOOR SCHEDULE COMMENTS

- 1. DOOR IS PART OF WINDOW SYSTEM. VERIFY SIZE WITH WINDOW/RELITE SCHEDULE OR EXTERIOR/INTERIOR ELEVATIONS. 2. ELECTRONIC CARD ACCESS, COORDINATE CONDUIT AND POWER REQUIREMENTS WITH OWNER, ELECTRICAL, AND SECURITY.

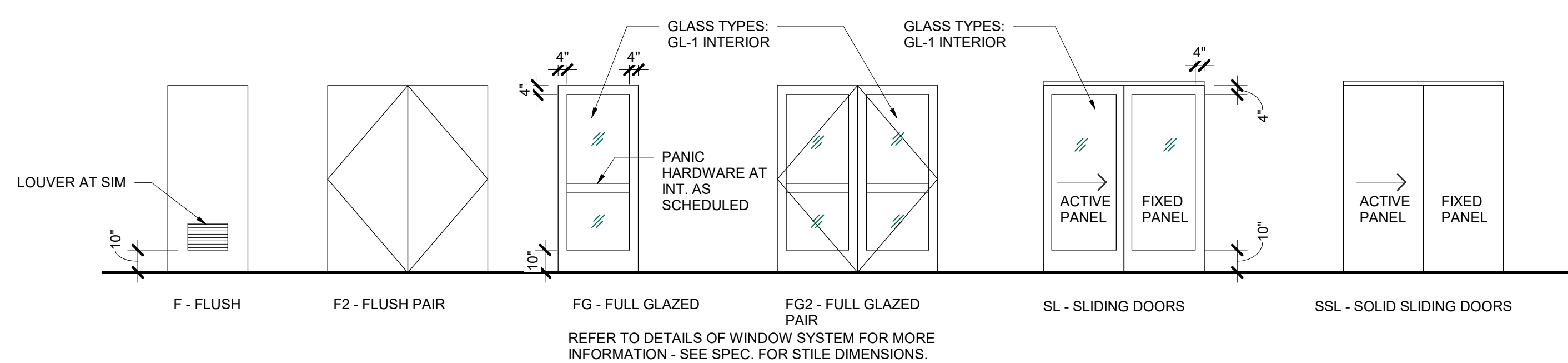
MANUFACTURER'S ABBREVIATIONS

- AD ADAMS RITE
AA ASSA ABLOY
BM BESAM

DOOR DEVICE/HARDWARE MOUNTING HEIGHTS



DOOR PROFILES



MATERIAL LEGEND

Table with columns: Tag, Product Type, Manufacturer, Model #, Finish/Color, Dimension, Notes.

MATERIAL LEGEND - INTEGRATED INTERIOR ASSEMBLIES

Table with columns: Tag, Product Type, Manufacturer, Model #, Finish/Color, Dimension, Notes.

FRAME PROFILES

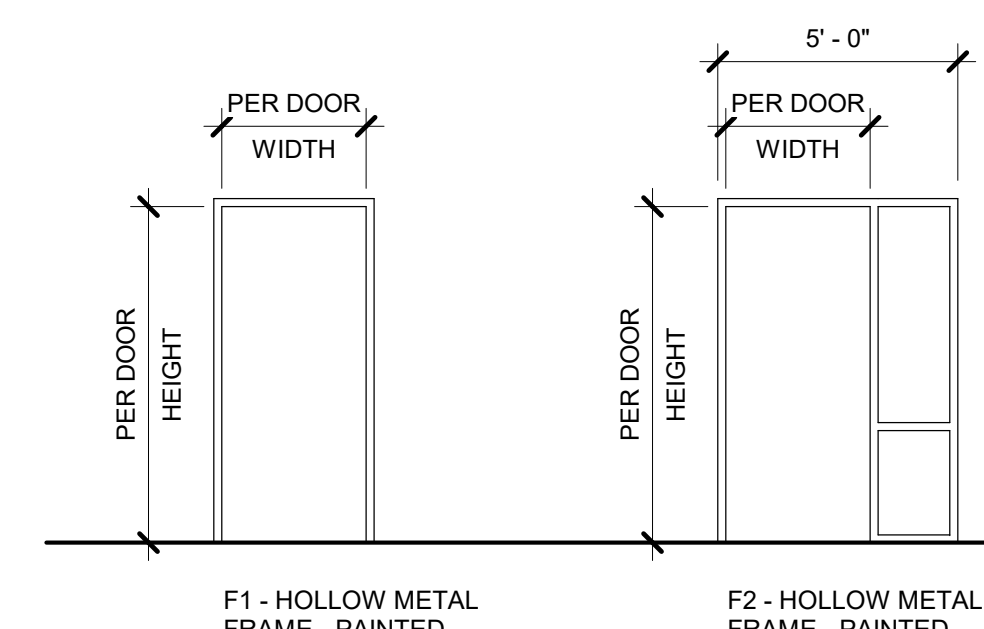


Table with columns: NO., DESCRIPTION, DATE. Includes a Revisions section.



1 AXONOMETRIC VIEW LOOKING EAST AT LEVEL 2 ADMIN SUITE - FOR REFERENCE ONLY  
NTS



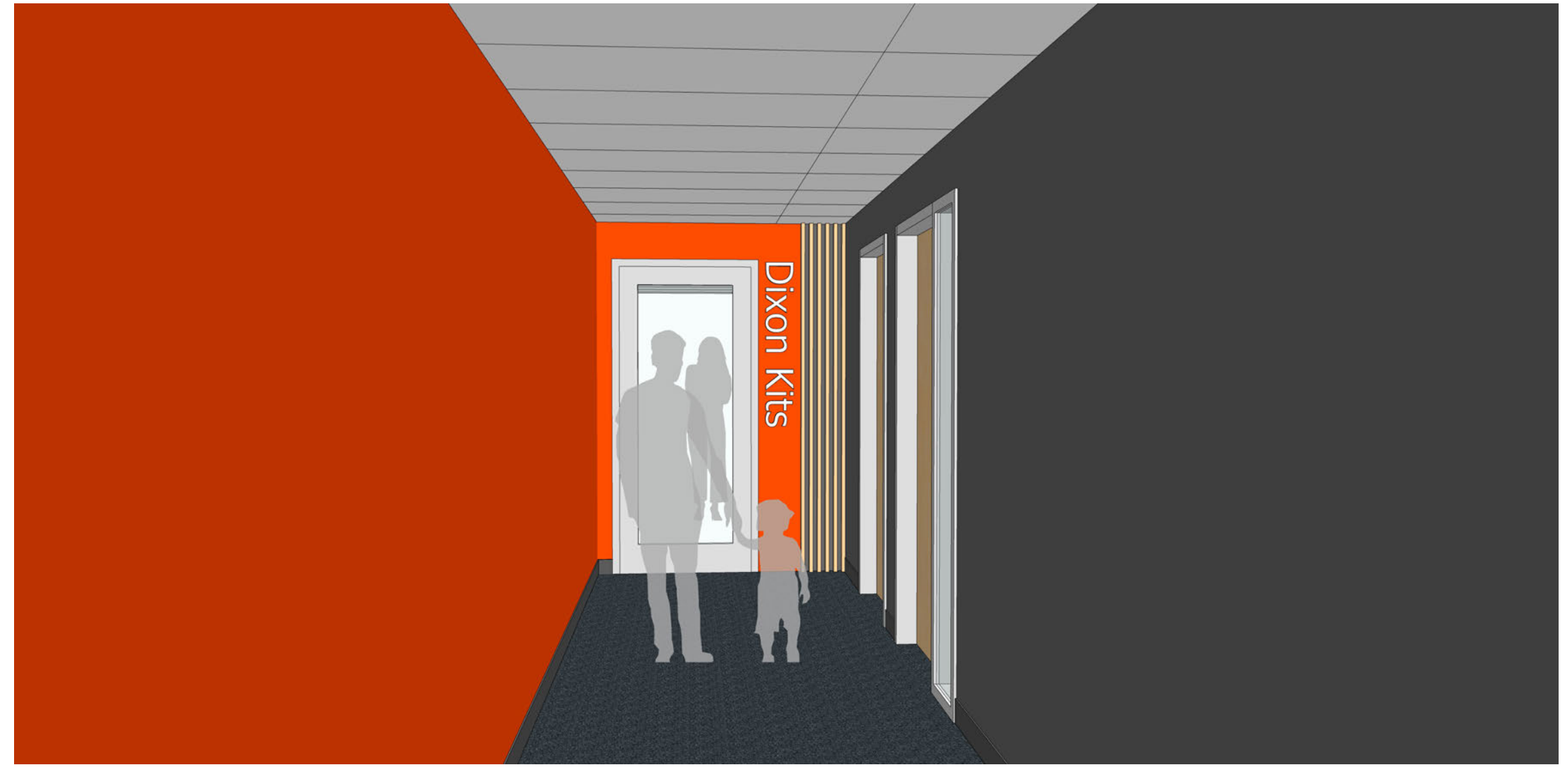
2 AXONOMETRIC VIEW LOOKING SOUTH TOWARD LEVEL 2 ADMIN SUITE RECEPTION AREA - FOR REFERENCE ONLY  
NTS



3 AXONOMETRIC VIEW LOOKING NE AT LEVEL 1 WEST ENTRY AREA - FOR REFERENCE ONLY  
NTS



4 VIEW LOOKING WEST TOWARD LEVEL 2 REC SPORTS ENTRY - FOR REFERENCE ONLY  
NTS



5 VIEW LOOKING NORTH AT LEVEL 1 CHILDCARE ENTRY - FOR REFERENCE ONLY  
NTS



6 VIEW LOOKING VIEW LOOKING NW AT LEVEL 1 SUITE ENTRIES - FOR REFERENCE ONLY  
NTS



7 VIEW LOOKING NORTH AT WEST ENTRY LOBBY - FOR REFERENCE ONLY  
NTS

NO.	DESCRIPTION	DATE





① PERSPECTIVE VIEW LOOKING NORTHEAST AT LEVEL 2 MIND BODY STUDIO - FOR REFERENCE ONLY  
NTS



② PERSPECTIVE VIEW LOOKING EAST AT LEVEL 2 MIND BODY STUDIO - FOR REFERENCE ONLY  
NTS



③ PERSPECTIVE VIEW LOOKING NORTH AT LEVEL 2 MIND BODY STUDIO - FOR REFERENCE ONLY  
NTS

NO.	DESCRIPTION	DATE

SHEET NOTES:

1. UTILIZE EXISTING CIRCUITS MADE AVAILABLE DURING DEMOLITION TO SERVE LIGHTING SHOWN ON SHEET.

REFERENCE NOTES:

- ① RGBW CONTROLLER FOR TYPE T FIXTURES.
- ② DOWNLIGHTS TO BE REPLACED ONE FOR ONE IN THIS AREA.
- ③ 1" LUMINAIRE ASSEMBLY TO BE SUSPENDED 8 AFF. FIXTURE ASSEMBLY TO BE SUSPENDED PARTIALLY FROM THE FIRST FLOOR CEILING AND PARTIALLY FROM THE SECOND FLOOR CEILING IN THE LOBBY SPACE. CONNECT FIXTURES TO EXISTING CONTROLS IN ADJACENT SPACES.
- ④ CONNECT LIGHTS TO EXISTING LIGHTING CIRCUIT IN MAIN CORRIDOR.
- ⑤ CONNECT LIGHTING IN THESE AREA THROUGH SPARE RELAY IN LIGHTING CONTROL PANEL ON SECOND FLOOR. PROGRAM SO LIGHTS ARE ON DURING NORMAL OFFICE HOUR. PROGRAM OFF HOURS SO LIGHTS CAN BE MANUALLY TURNED ON THROUGH LOW VOLTAGE SWITCH AND OCCUPANCY SENSORS IN SPACE.
- ⑥ REPLACE EXISTING SWITCH WITH 0-10V DIMMER. CONNECT SUCH THAT NEW DIMMER CONTROLS LINEAR. FIXTURE TYPE B24 ONLY.
- ⑦ CONNECT NEW LIGHTS THROUGH EXISING KEY SWITCH USED FOR PREVIOUS LIGHTS.
- ⑧ NEW LOCATION OF CRESTRON LIGHTING CONTROL SYSTEM. EXTEND WIRING TO THIS LOCATION AS NECESSARY.



CONSTRUCTION DOCUMENTS

Date 02/02/23

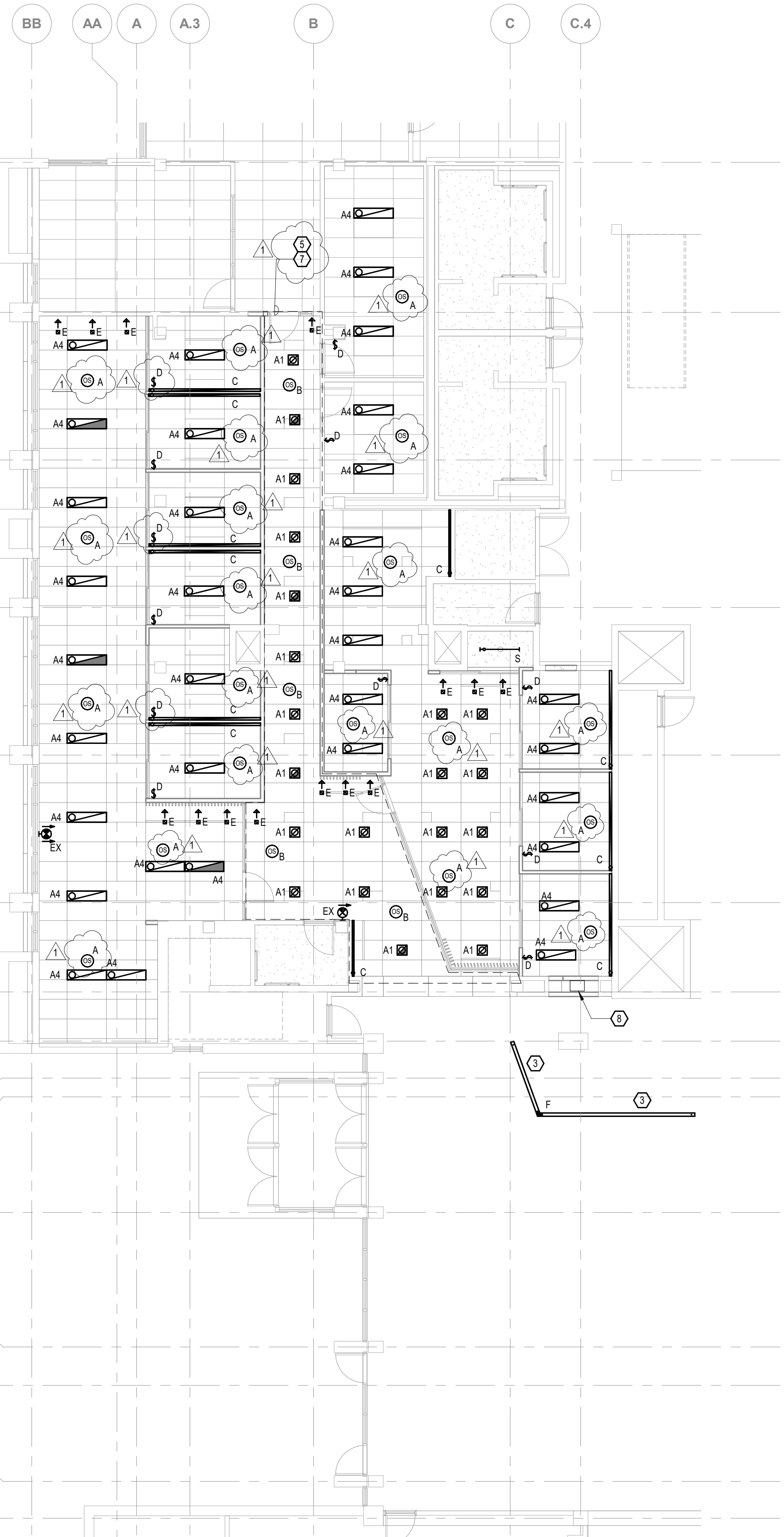
Project No. 220301

Revisions

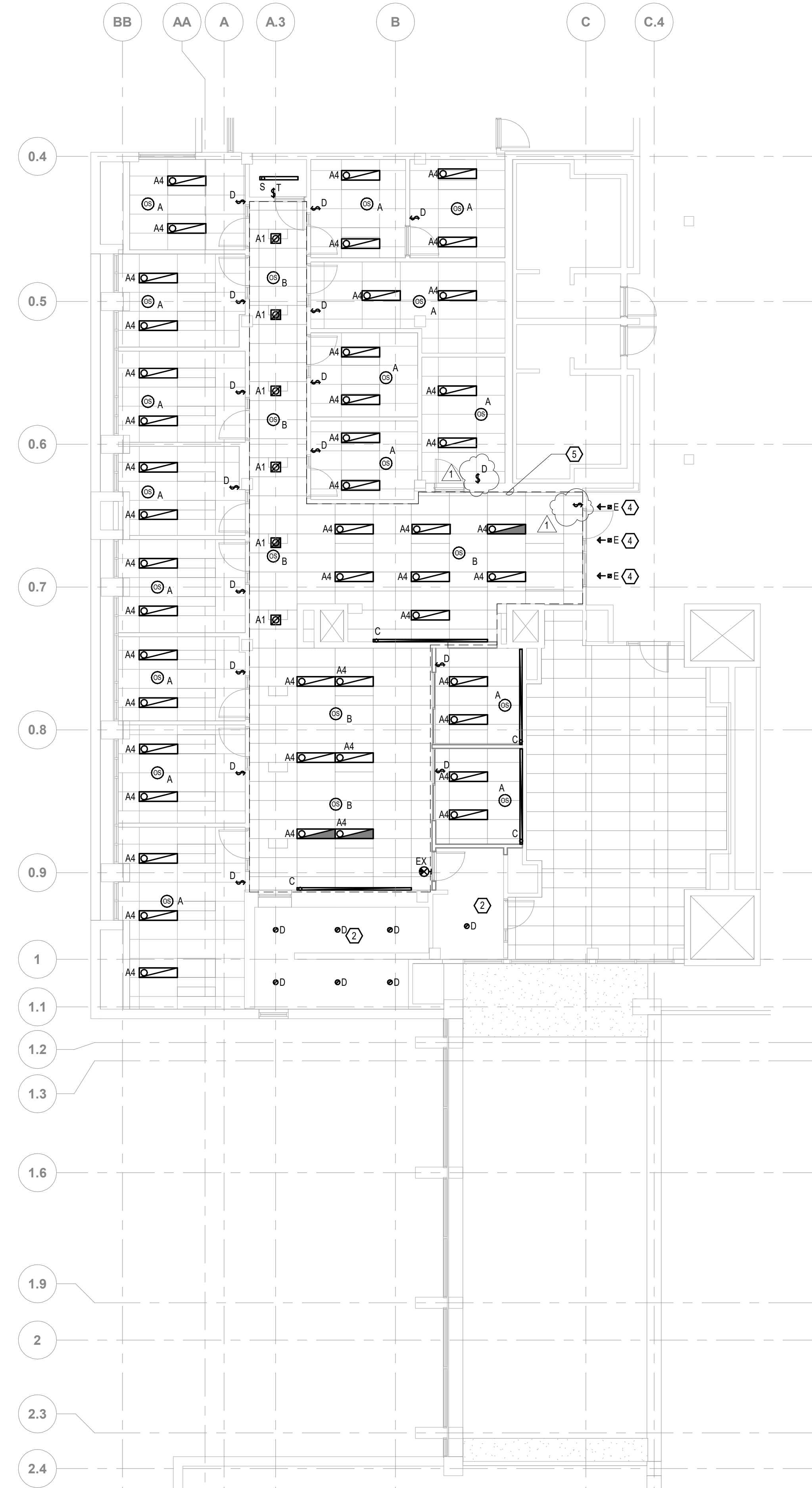
NO.	DESCRIPTION	DATE
1	ADD	03/16/2023

LIGHTING PLAN - LEVEL 1

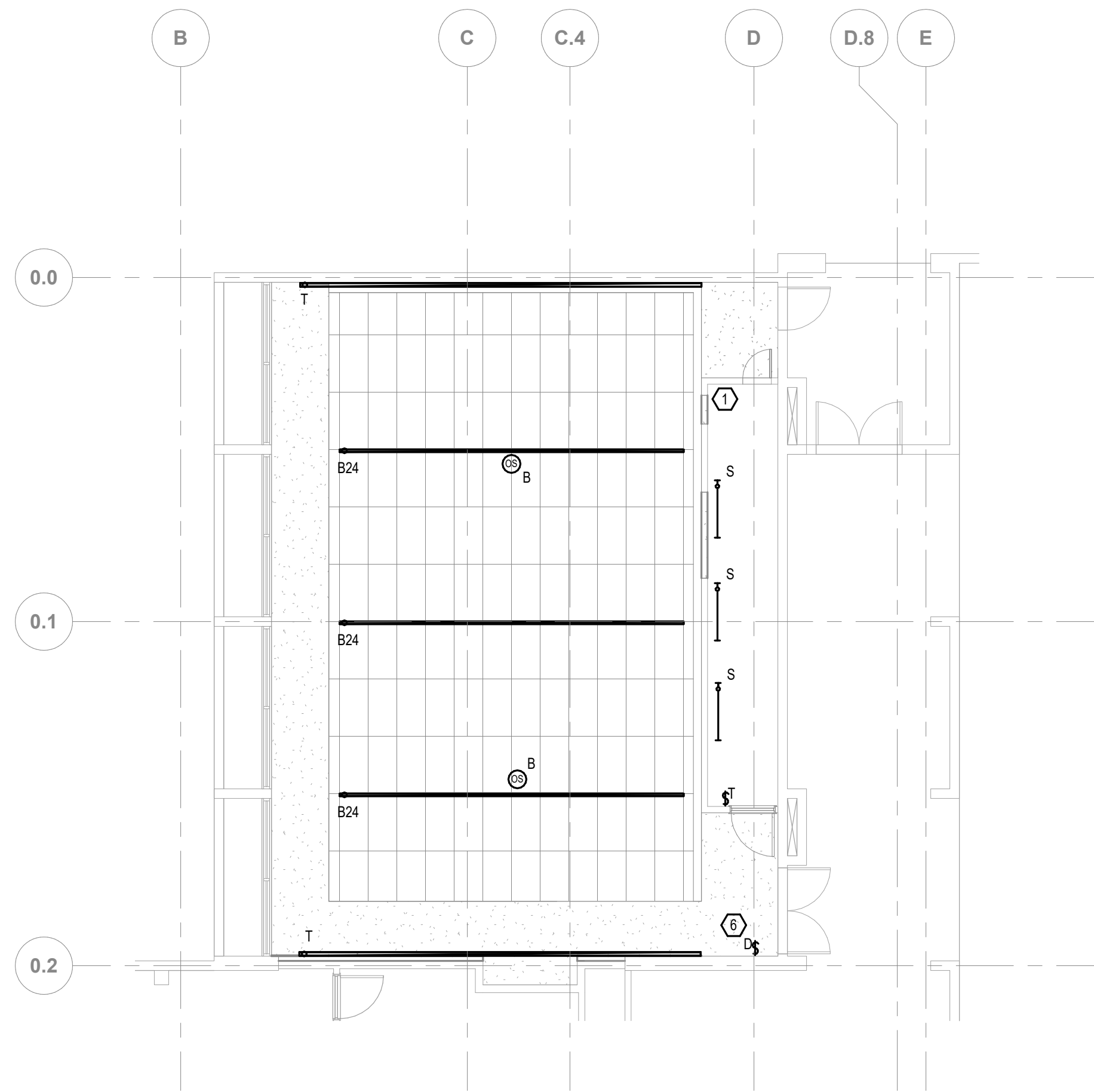
E110



① Level 01 Lighting - Program Suites - RCP  
1/8" = 1'-0"



② Level 02 Lighting - Admin Suite - RCP  
1/8" = 1'-0"



③ Level 02 Lighting - MP Room #4 - RCP  
1/8" = 1'-0"



