



**REQUEST FOR INFORMATION
No. DL174000I**

**Disassemble and Transport Large/Heavy
Wood Processing Equipment**

I. SCHEDULE OF EVENTS

SCHEDULE OF EVENTS:

Issue Date..... December 11, 2014

Due Date and Time..... December 17, 2014 (3:00 pm, PT)

II. ISSUING OFFICE AND CONTACT

ISSUING OFFICE:

The Procurement, Contracts and Material Management (PCMM) department of Oregon State University (OSU) is the issuing office and is the sole point of contact for this Request for Information. All concerns or questions pertaining to this Request for Information should be appropriately addressed to the individual identified below:

CONTACT PERSON:

Name: Debora Lauer
Title: Purchasing Analyst II

Telephone: (541) 737-7343
Fax: (541) 737-2160
E-Mail: Debora.Lauer@oregonstate.edu

Address: Oregon State University
PCMM
644 SW 13th Avenue
Corvallis, Oregon 97333

III. INTRODUCTION

INTRODUCTION:

This is a Request for Information (RFI), issued by Oregon State University (OSU) Procurement, Contracts and Material Management (PCMM). The purpose of this RFI is to solicit input from potential contractors for information pertaining to the disassembly and transportation of Large/Heavy Wood Processing Equipment from Boise, Idaho to Oregon State University, Corvallis, Oregon.

OREGON STATE UNIVERSITY:

Founded in 1868, Oregon State University is a comprehensive, research-extensive, public university located in Corvallis. OSU is one of only two American universities to hold the Land Grant, Sea Grant, Space Grant and Sun Grant designations. OSU is also the only Oregon institution to hold the Carnegie Foundation's top ranking for research universities, a recognition of the depth and quality of OSU's graduate education and research programs.

Through its centers, institutes, Extension offices and Experiment Stations, OSU has a presence in almost every one of Oregon's 36 counties, including its main campus in Corvallis, the Hatfield Marine Sciences Center in Newport and OSU-Cascades Campus in Bend. OSU offers undergraduate, master's and doctoral degrees through 12 academic colleges enrolling more than 26,000 students from every county in Oregon, every state in the country and more than 90 nations.

IV. REQUIREMENTS

The contractor will be responsible for disassembling, labeling, packaging, loading, shipping and unloading of the heavy equipment (see pictures attached). The disassembly must be documented in a manner to allow reassembly. The task of reassembly will be the subject of a future request for bid. This equipment is located at Weyerhaeuser in Boise, Idaho. The estimated weight of the equipment is 140,000 pounds and may take an estimated 8 trucks for transportation to Oregon. One component alone weighs approximately 132,000 with dimensions 13' x 17' x 20' (LxWxH). The equipment must be removed from Weyerhaeuser by March 31, 2015.

V. SUBMITTALS

Respondents are requested to submit the following:

- Submit one copy of your response; which can be submitted via email as a pdf file
- Narrative describing the respondent's approach to fulfilling OSU's requirements;
- An estimated timeline for the above referenced requirements
- Estimated pricing for the completion of the above requirements
- Examples of work and materials from similar projects.

Responses must be sent to the contact person identified in Section II of this RFI.

Information gathered in this process could potentially be incorporated in an Invitation to Bid (ITB) or Request for Proposal (RFP). Any resulting RFP or ITB will be openly competitive and therefore responses should not be exclusive or restrict competition. This RFI does not obligate OSU to issue an RFP or ITB nor to include information submitted by respondents.

A contract will not be issued directly from this RFI, nor will issuance or acceptance of submittals or subsequent conversations bind OSU into any type of contractual obligation or relationship.

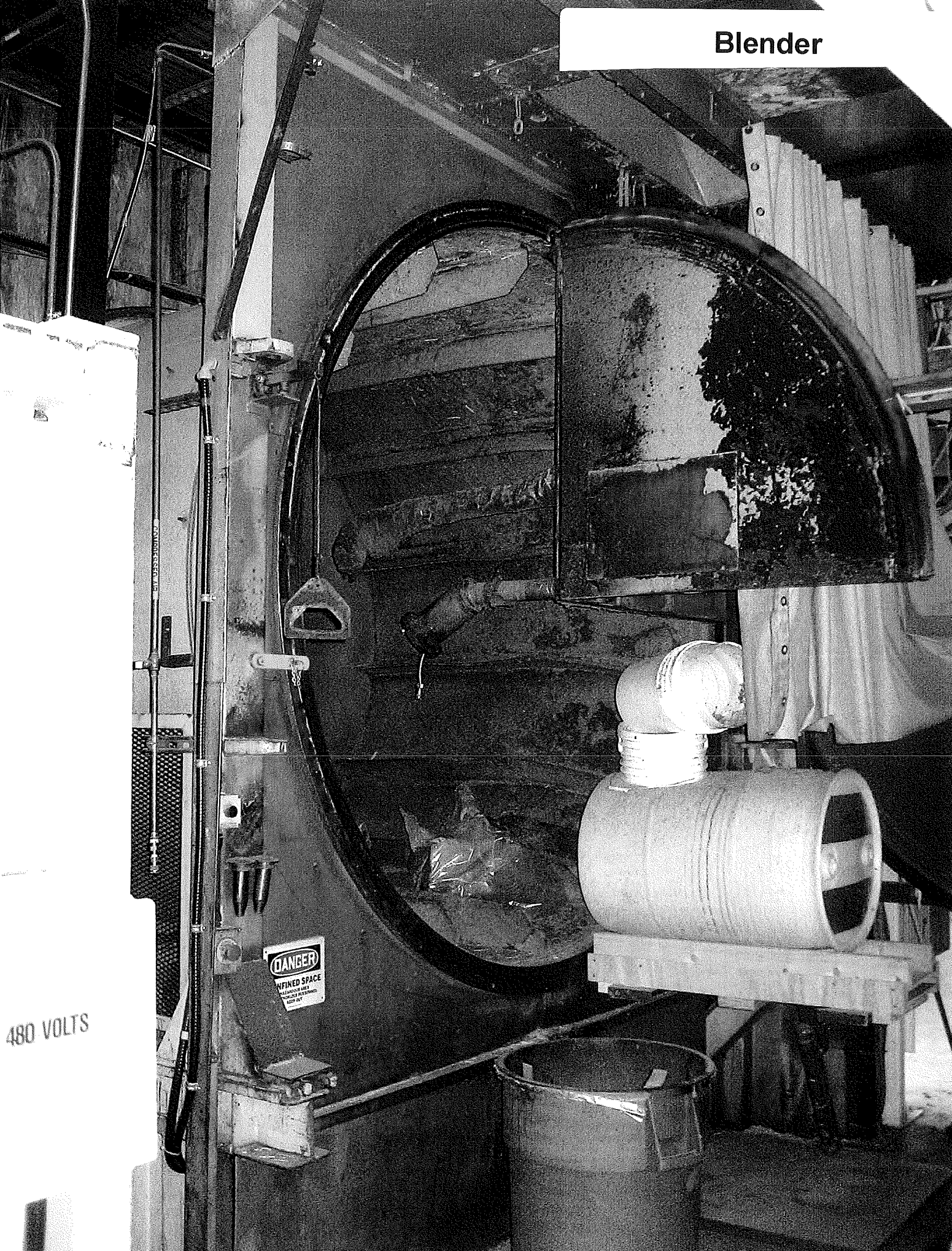
Blender Control Mezzanine



Blender

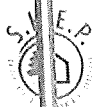
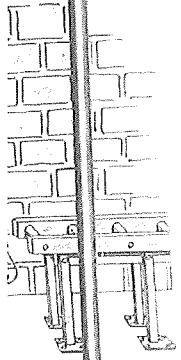
480 VOLTS

⚠ DANGER
UNFINISHED SPACE
ALL WORK MUST
BE COMPLETED
KEEP OUT



Boiler

ipm
beer
ed.



EMERGENCY



EMERGENCY



with this lock emergency
release button push and
hold together with
thumb and forefinger



Do not touch emergency
release button of the gate
while the gate is moving
or when the gate is
fully open. The gate
may become loose or
fall off the track.

made by
Alex. M. L. Co.



EMERGENCY



EMERGENCY



EMERGENCY



EMERGENCY

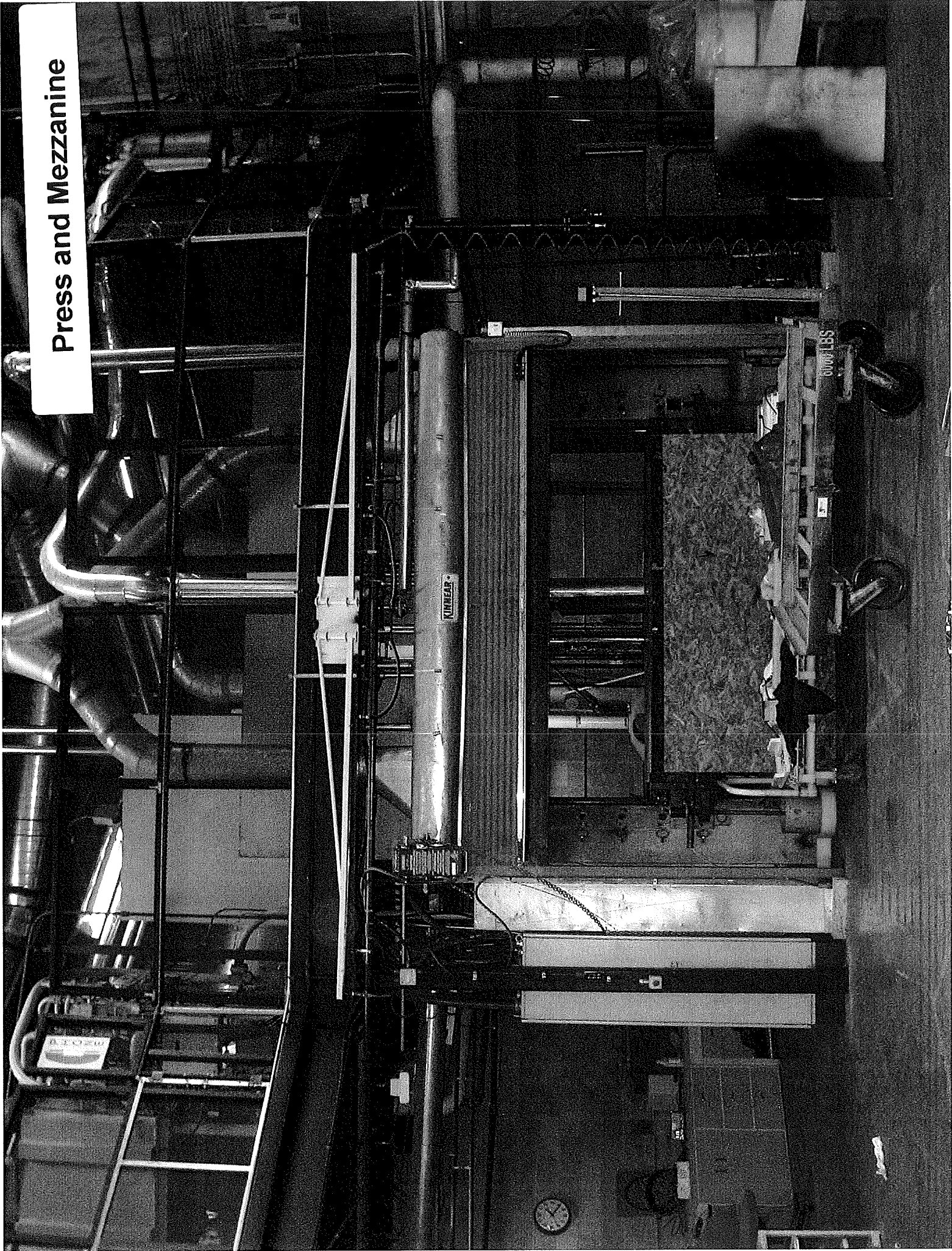


EMERGENCY



EMERGENCY

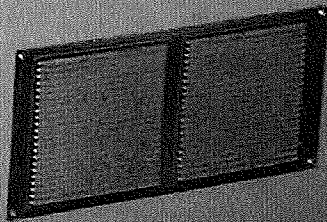
Press and Mezzanine



Press Cabinet

PLC-CABINET

PLC Controls
& Conditioners
120 VOLTS
Feed from MCC # 1
CT1
-6-79



Press, Mezzanine and Billet Rack



Small Dryer Ovens

