

GENERAL NOTES

- PORTABLE EQUIPMENT AND ALTERNATE EQUIPMENT LOCATIONS SHOWN IN LIGHT GRAY.

REVISIONS

REV	SH	ZONE	ITEM	DESCRIPTION	DATE	APPL. SIG & ORG
	ALL	ALL	-	INITIAL ISSUE		
				THIS DOCUMENT UPDATES THE CONTRACT DRAWING GENERAL ARRANGEMENTS, DRAWING NO. 12100-070-01, REV A, DATED 7/29/16 WITH FOLLOWING CHANGES:		
4	8B	1		REMOVED REFERENCE TO 'THRUSTER LUBE OIL TANK'		
4	4B	2		REMOVED CLEANING GEAR LOCKER		
4	3B	3		ADDED HORIZONTAL WT BOUNDARY, CHANGED ROOM NUMBER TO BOW THRUSTER VOID 4-5-0 AND EXTENDED GRATING TO AFT END OF BOWTHRUSTER ROOM		
4	2B	4		ADDED INSPECTION ACCESS TO VOID (2-(-2)-0		
6	2B	5		MOVED HATCH TO BE CENTERED ON FRAME 11.5		
7	3D	6		MOVED HATCH TO BE CENTERED ON FRAME 11.5		
8	4D	7		REMOVED ROOM NUMBER FROM WORK SHOP AREA		
8	4C	8		CHANGED ROOM NUMBER TO 3-31-0		
8	3C	9		EXTENDED GRATING TO AFT END OF BOW THRUSTER ROOM, CHANGED DEPICTION		
8	2D	10		ADDED INSPECTION ACCESS TO VOID (2-(-2)-0	11/16/17	JBB/G&C

RESERVED AS NOTED

(REVISIONS CONTINUE ON SEE SHEET 1A)


31	TRANSDUCER CONDUITS	6096-506-003
30	CONSOLE ARRANGEMENT	6096-417-001
29	SCHEDULE OF WINDOWS DOORS AND HATCHES	6096-167-100
28	ELECTRICAL EQUIPMENT ARRANGEMENT	6096-300-003
27	MAIN MAST	6096-171-001
26	HABITABILITY SPACE SKETCHES	6096-640-001
25	PORT TRANSDUCER POLE	M015736
24	SEA CHEST ARRANGEMENTS	6096-163-001
23	EMERGENCY TOWING PLAN	6096-500-003
22	ANCHOR HANDLING & MOORING FOUNDATIONS	6096-581-001
21	ALUMINUM SUPERSTRUCTURE ARRANGEMENT	6096-150-001
20	BROW DESIGN AND STORAGE	6096-616-002
19	PROVISION COOLING PLANT (HEINEN & HOPMAN)	32817023-601
18	CHILLER (HEINEN & HOPMAN)	32817023-401
17	ANCHOR WINCH RIGHT VERSION	RH321674
16	ANCHOR WINCH LEFT VERSION	RH321675
15	PORTABLE WINCH (RAPP)	RH324106
14	PORTABLE OFFSHORE FOLDABLE TELESCOPIC CRANE (RAPP)	MG-FT005D-S2
13	HYDROGRAPHIC WINCH (RAPP)	RH324104
12	MAIN A-FRAME STERN (RAPP)	18729
11	PORTABLE A-FRAME SIDE (RAPP)	17864
10	CTD DAVIT (RAPP)	17844
9	OFFSHORE FOLDABLE TELESCOPIC CRANE - MAIN DECK (RAPP)	MG-FT020DH-S3
8	PILOTHOUSE & CHART ROOM ARRANGEMENT	6096-661-001
7	MACHINERY ARRANGEMENT	6096-500-001
6	HEATING, VENTILATION & AIR CONDITIONING SYSTEM	6096-512-001
5	FREERING PORT ARRANGEMENT & DETAILS	6096-190-001
4	OVERBOARD HANDLING SYSTEMS	6096-710-001
3	MOORING ARRANGEMENT	6096-580-001
2	LINES PLAN	6096-070-002
1	TECHNICAL SPECIFICATION	12100.05

REFERENCE PLANS
SPECIAL NOTATIONS

THIS DRAWING IS A LIVE DOCUMENT AND REFLECTS LATEST DESIGN DATA AS NOTED. SEE REFERENCES FOR INFORMATION.

DRAWING CONFIDENTIALITY STATEMENT

THIS DRAWING IS TO BE USED FOR CONSTRUCTION OF THE REGIONAL CLASS RESEARCH VESSELS. USE AND/OR REPRODUCTION OF THIS DRAWING AND FURTHER DISSEMINATION IS AUTHORIZED ONLY AS DIRECTED BY BOLLINGER SHIPYARDS OR OREGON STATE UNIVERSITY.

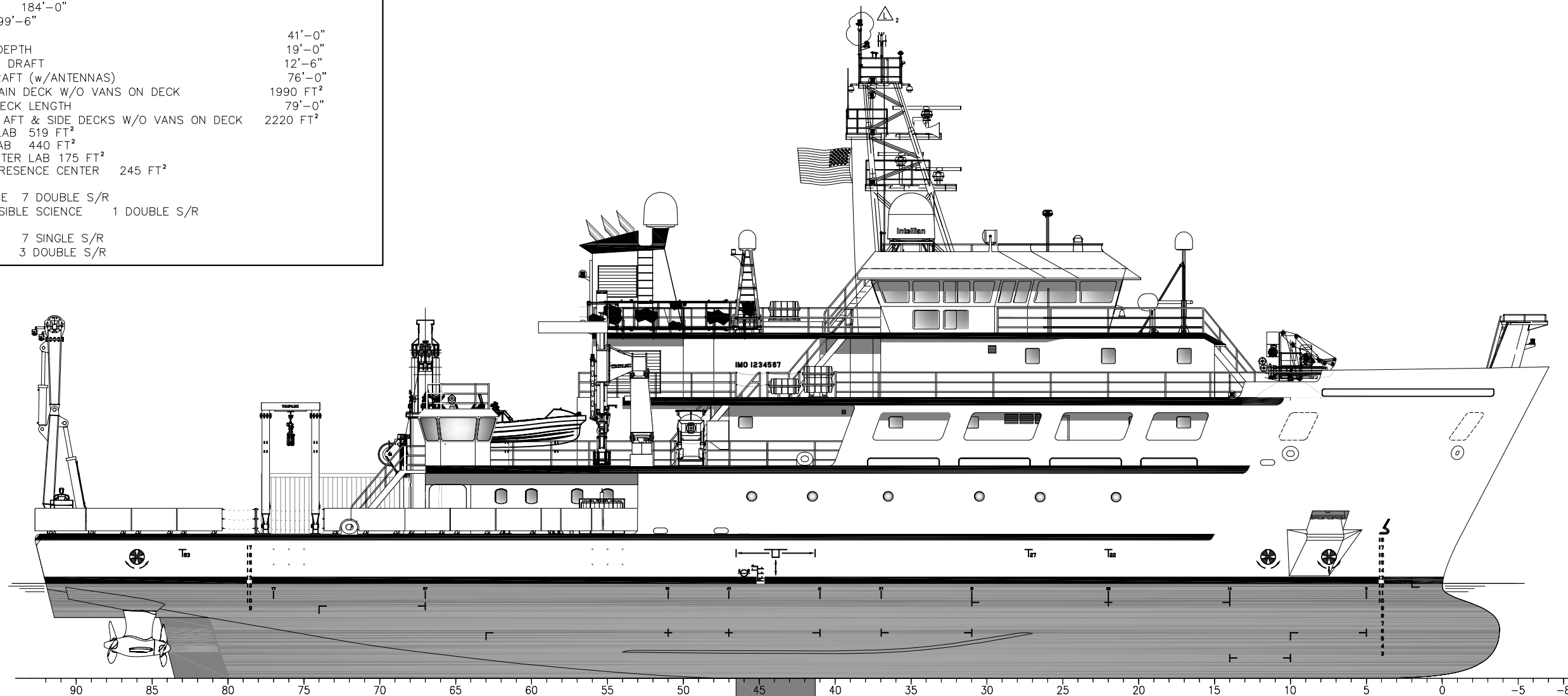
KEY:
 ZONE KNOWN TO REQUIRE CHANGES AS DESIGN MATURES

BOLLINGER HOUMA SHIPYARDS, LLC. 301 BOLLINGER LN HOUMA, LA 70363 PHONE: (985) 872-2305 CONTRACT/PO NO. 184162		OREGON STATE UNIVERSITY CORVALLIS, OR 97331 199'-6" REGIONAL CLASS RESEARCH VESSEL GENERAL ARRANGEMENT COVER SHEET	
DRAWN: J. PIZZITOLA 01/12/18 CHECKED: C. MCCANN 01/12/18 APPROVED: C. FLY 01/12/18	SIZE: D FSCM CAGE NO.: 64513 DRAWING NO.: 6096-070-001 SCALE: NONE HULL #: 6096 6097 6098	SHEET 1 OF 10	REV: L

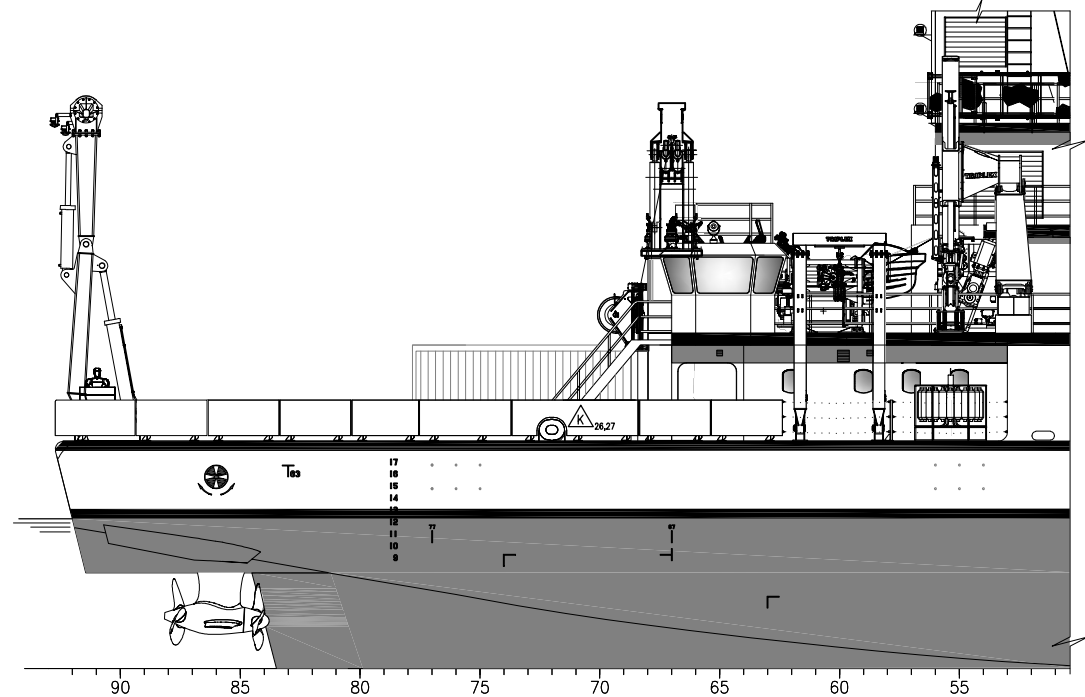
PROFESSIONAL ENGINEER STAMP



VESSEL PARTICULARS	
LWL	184'-0"
LOA	199'-6"
BEAM	41'-0"
HULL DEPTH	19'-0"
DESIGN DRAFT	12'-6"
AIR DRAFT (w/ANTENNAS)	76'-0"
AFT MAIN DECK W/O VANS ON DECK	1990 FT ²
SIDE DECK LENGTH	79'-0"
TOTAL AFT & SIDE DECKS W/O VANS ON DECK	2220 FT ²
MAIN LAB	519 FT ²
WET LAB	440 FT ²
COMPUTER LAB	175 FT ²
DATAPRESENCE CENTER	245 FT ²
SCIENCE	7 DOUBLE S/R
ACCESSIBLE SCIENCE	1 DOUBLE S/R
CREW	7 SINGLE S/R
	3 DOUBLE S/R



ELEVATION 2-5A
OUTBOARD PROFILE
1/8"=1'-0"



ELEVATION 2-6A
OUTBOARD PROFILE w/SIDE A-FRAME GATE OPEN
1/8"=1'-0"

PROFESSIONAL ENGINEER STAMP

OREGON STATE UNIVERSITY CORVALLIS, OR 97331			
199'-6" REGIONAL CLASS RESEARCH VESSEL			
GENERAL ARRANGEMENT ELEVATION - OUTBOARD PROFILE			
SIZE D	FSCM CAGE NO. 64513	DRAWING NO. 6096-070-001	REV L
SCALE: NONE	HULL #: 6096 6097 6098		SHEET 2 OF 10

TOP OF MAST
88'-7" ABL

MAST 03 LEVEL
78'-5" ABL

MAST 02 LEVEL
71'-8" ABL

MAST 01 LEVEL
64'-11" ABL

04 LEVEL
54'-0" ABL

03 LEVEL
45'-6" ABL

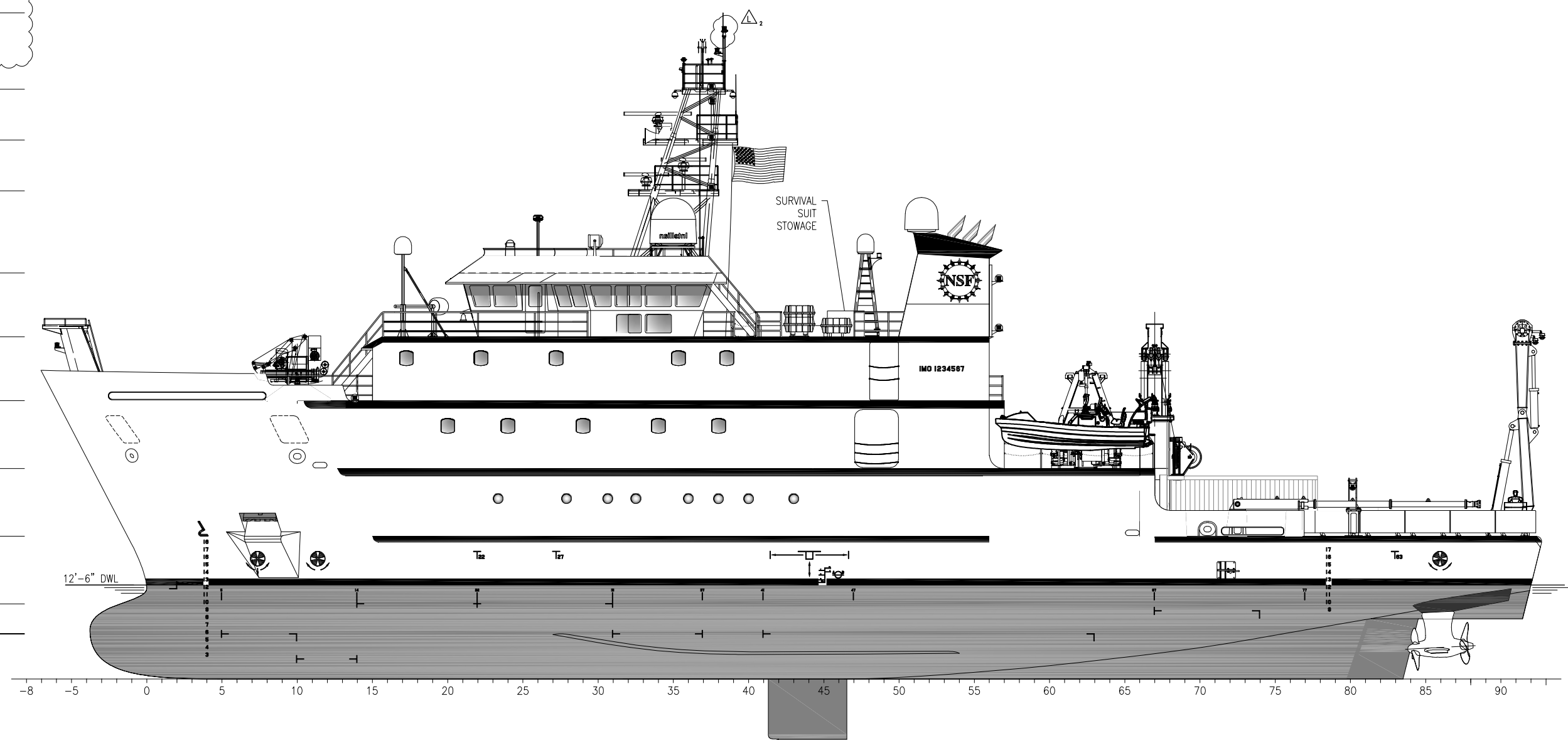
02 LEVEL
37'-0" ABL

01 LEVEL
28'-0" ABL

MAIN DECK
19'-0" ABL

1st PLATFORM
10'-0" ABL

TANK TOP
6'-0" ABL



12'-6" DWL

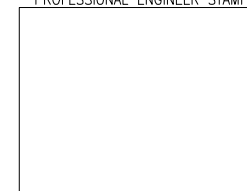
IMO 1234567

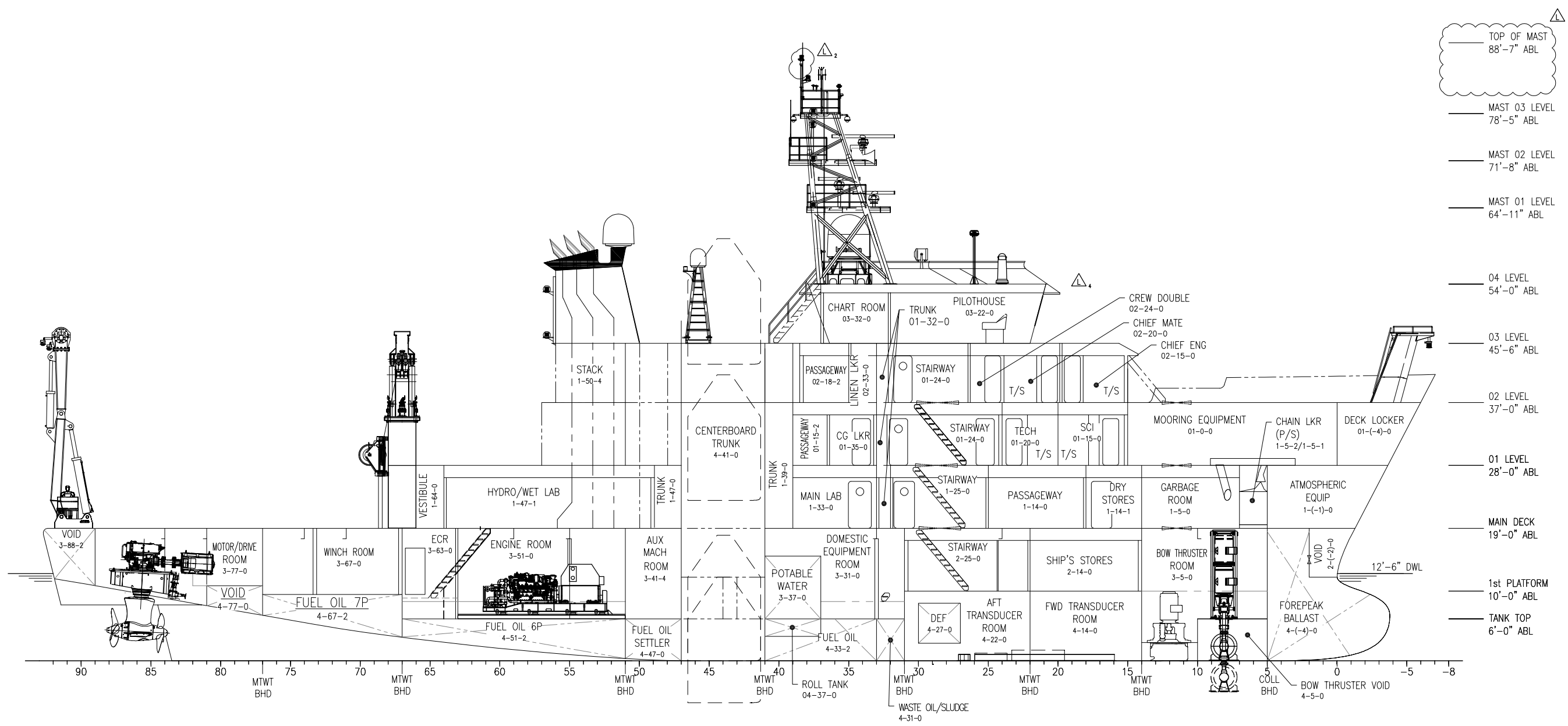
SURVIVAL SUIT STOWAGE

ELEVATION 3-4A
PORT OUTBOARD PROFILE
1/8"=1'-0"

OREGON STATE UNIVERSITY CORVALLIS, OR 97331			
199'-6" REGIONAL CLASS RESEARCH VESSEL GENERAL ARRANGEMENT ELEVATION - PORT OUTBOARD PROFILE			
SIZE D	FSCM CAGE NO. 64513	DRAWING NO. 6096-070-001	REV L
SCALE: NONE	HULL #: 6096 6097 6098	SHEET 3 OF 10	

PROFESSIONAL ENGINEER STAMP





- TOP OF MAST
88'-7" ABL
- MAST 03 LEVEL
78'-5" ABL
- MAST 02 LEVEL
71'-8" ABL
- MAST 01 LEVEL
64'-11" ABL
- 04 LEVEL
54'-0" ABL
- 03 LEVEL
45'-6" ABL
- 02 LEVEL
37'-0" ABL
- 01 LEVEL
28'-0" ABL
- MAIN DECK
19'-0" ABL
- 1st PLATFORM
10'-0" ABL
- TANK TOP
6'-0" ABL

ELEVATION 4-5A
INBOARD PROFILE
1/8"=1'-0"

PROFESSIONAL ENGINEER STAMP

OREGON STATE UNIVERSITY CORVALLIS, OR 97331			
199'-6" REGIONAL CLASS RESEARCH VESSEL			
GENERAL ARRANGEMENT ELEVATION - INBOARD PROFILE			
SIZE D	FSCM CAGE NO. 64513	DRAWING NO. 6096-070-001	REV L
SCALE: NONE	HULL #: 6096 6097 6098	SHEET 4 OF 10	

8 7 6 5 4 3 2 1

D

D

C

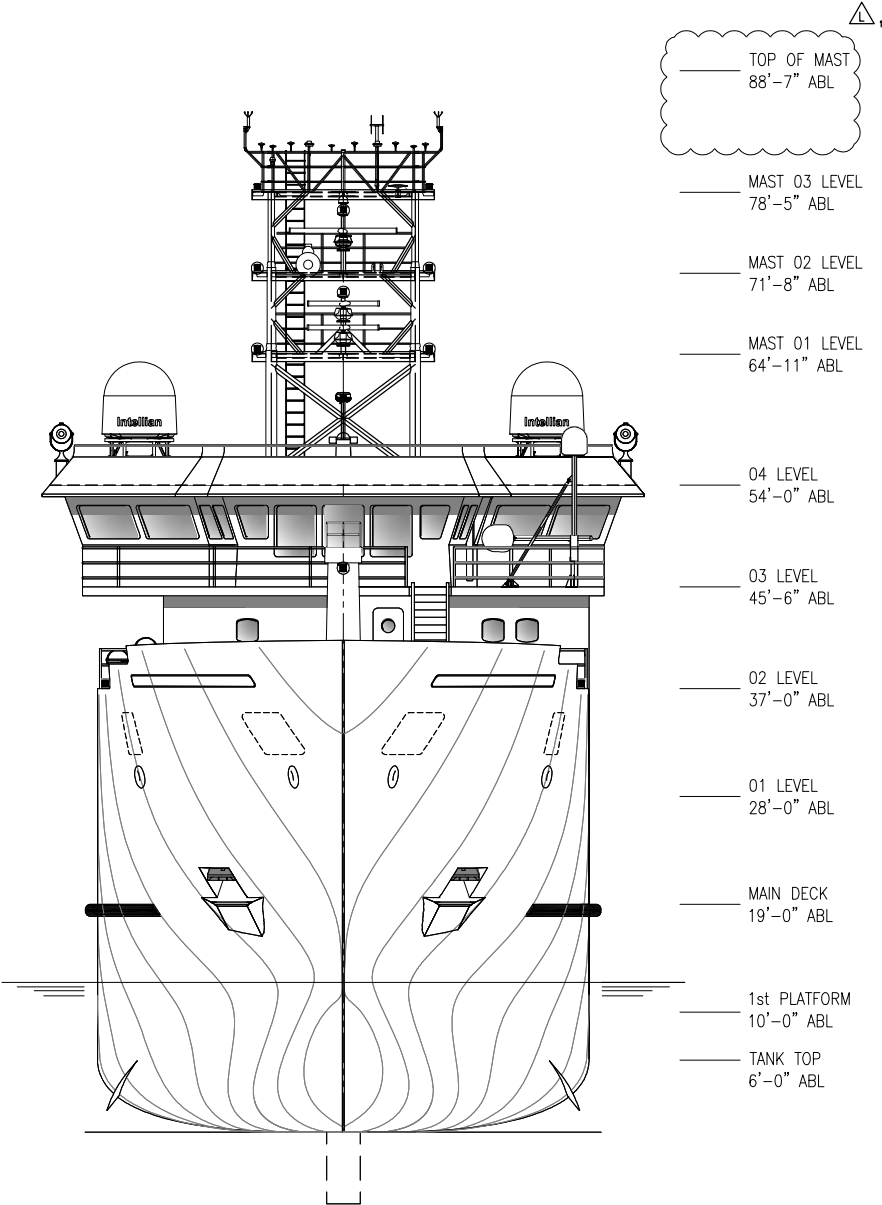
C

B

B

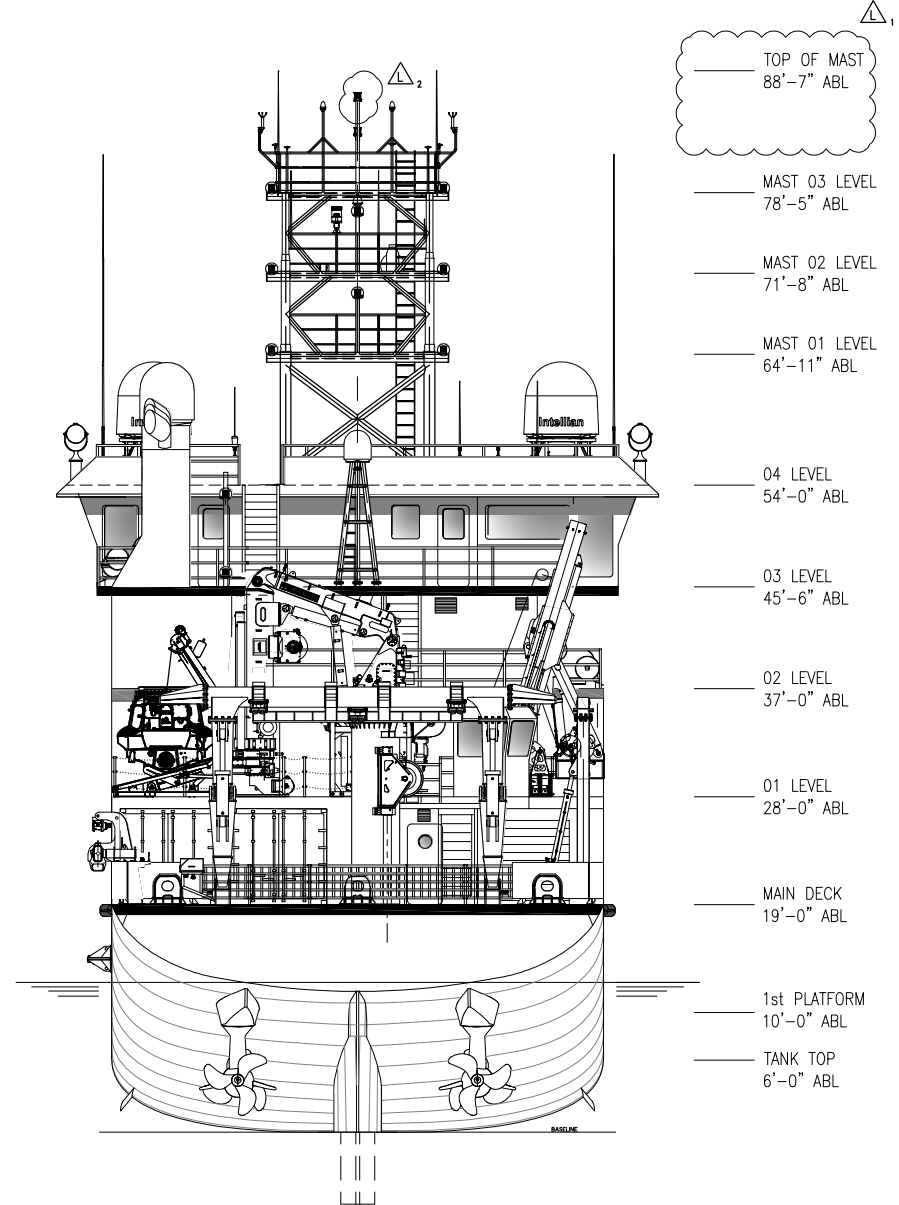
A

A



- TOP OF MAST
88'-7" ABL
- MAST 03 LEVEL
78'-5" ABL
- MAST 02 LEVEL
71'-8" ABL
- MAST 01 LEVEL
64'-11" ABL
- 04 LEVEL
54'-0" ABL
- 03 LEVEL
45'-6" ABL
- 02 LEVEL
37'-0" ABL
- 01 LEVEL
28'-0" ABL
- MAIN DECK
19'-0" ABL
- 1st PLATFORM
10'-0" ABL
- TANK TOP
6'-0" ABL

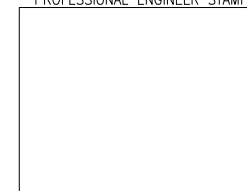
SECTION 5-6A
LOOKING AFT
1/8"=1'-0"



- TOP OF MAST
88'-7" ABL
- MAST 03 LEVEL
78'-5" ABL
- MAST 02 LEVEL
71'-8" ABL
- MAST 01 LEVEL
64'-11" ABL
- 04 LEVEL
54'-0" ABL
- 03 LEVEL
45'-6" ABL
- 02 LEVEL
37'-0" ABL
- 01 LEVEL
28'-0" ABL
- MAIN DECK
19'-0" ABL
- 1st PLATFORM
10'-0" ABL
- TANK TOP
6'-0" ABL

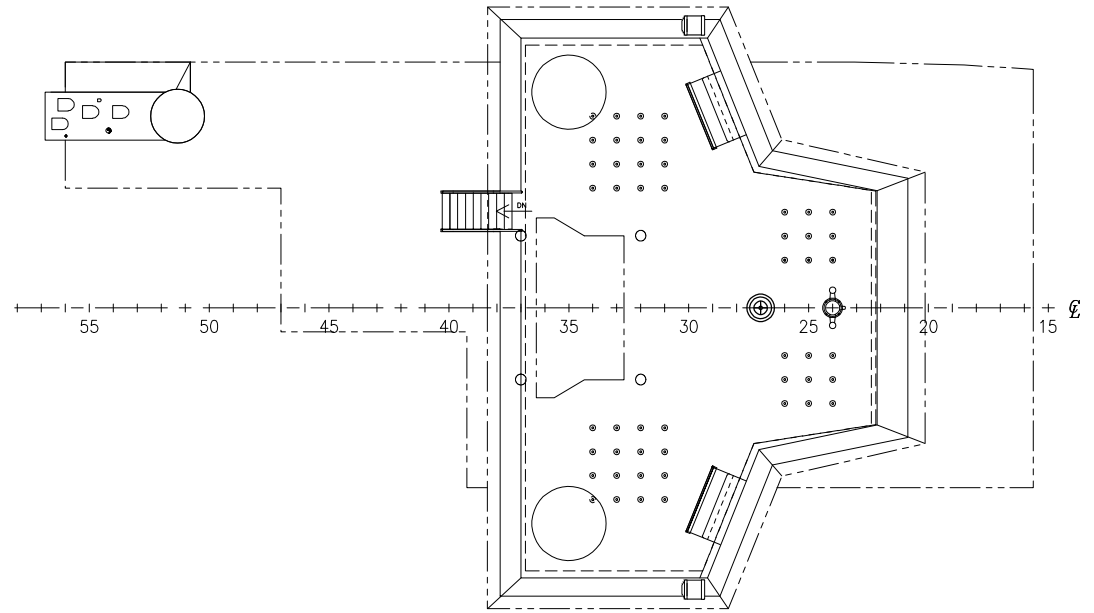
SECTION 5-3A
LOOKING FWD
1/8"=1'-0"

PROFESSIONAL ENGINEER STAMP

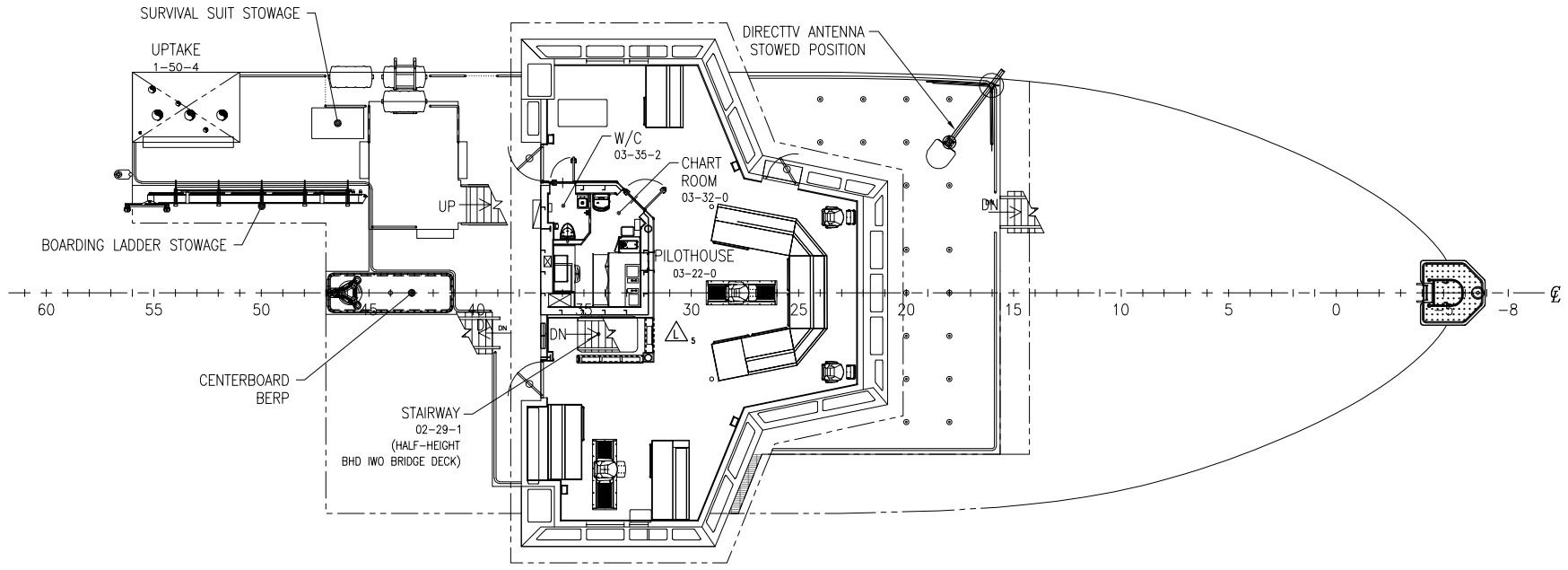


OREGON STATE UNIVERSITY CORVALLIS, OR 97331			
199'-6" REGIONAL CLASS RESEARCH VESSEL			
GENERAL ARRANGEMENT SECTION - END VIEWS			
SIZE D	FSCM CAGE NO. 64513	DRAWING NO. 6096-070-001	REV L
SCALE: NONE	HULL #: 6096 6097 6098		SHEET 5 OF 10

8 7 6 5 4 3 2 1

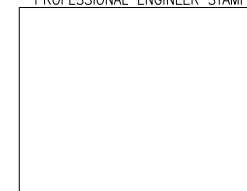


PLAN 6-5C
 04 LEVEL (PILOTHOUSE TOP)
 1/8"=1'-0"

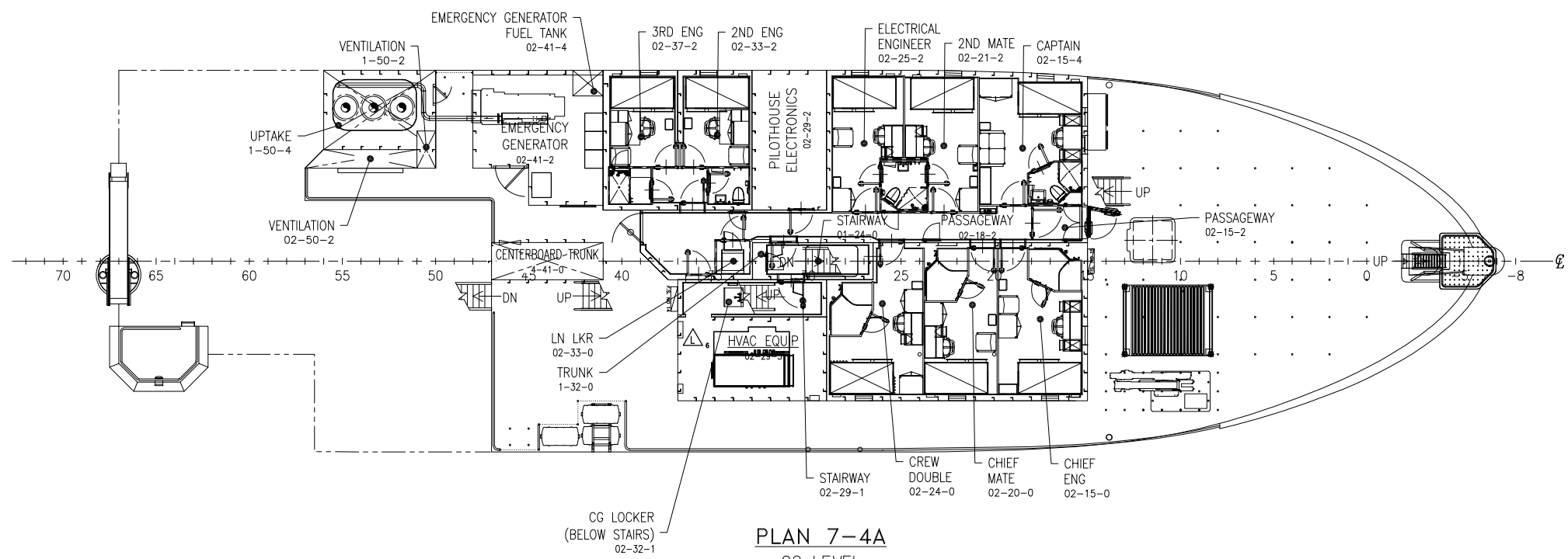


PLAN 6-4A
 03 LEVEL (PILOTHOUSE)
 1/8"=1'-0"

PROFESSIONAL ENGINEER STAMP



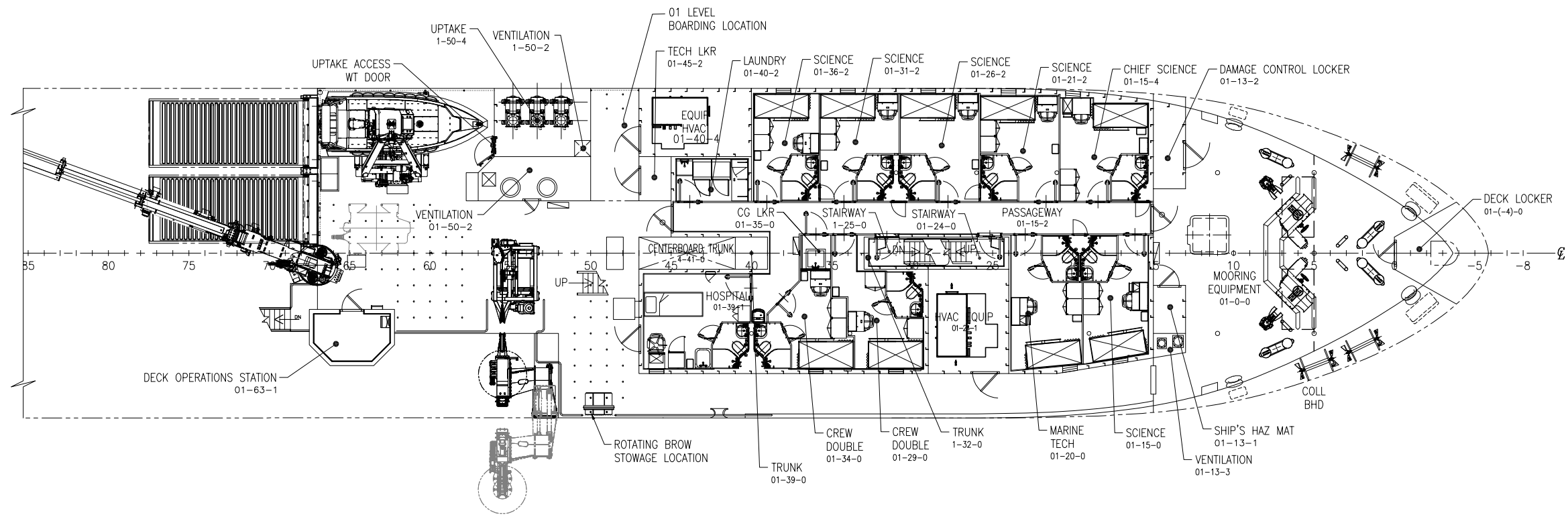
OREGON STATE UNIVERSITY CORVALLIS, OR 97331			
199'-6" REGIONAL CLASS RESEARCH VESSEL			
GENERAL ARRANGEMENT			
PLAN VIEW - 02, 03, & 04 LEVEL			
SIZE D	FSCM CAGE NO. 64513	DRAWING NO. 6096-070-001	REV L
SCALE: NONE	HULL #: 6096 6097 6098		SHEET 6 OF 10



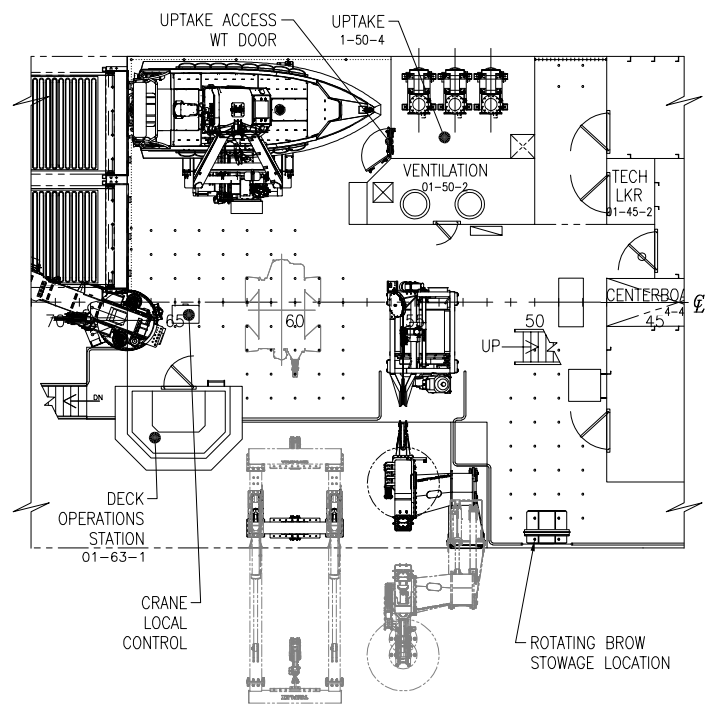
PLAN 7-4A
02 LEVEL
1/8"=1'-0"

PROFESSIONAL ENGINEER STAMP

OREGON STATE UNIVERSITY CORVALLIS, OR 97331			
199'-6" REGIONAL CLASS RESEARCH VESSEL			
GENERAL ARRANGEMENT			
PLAN VIEW - 02, 03, & 04 LEVEL			
SIZE D	FSCM CAGE NO. 64513	DRAWING NO. 6096-070-001	REV L
SCALE: NONE	HULL #: 6096 6097 6098		SHEET 7 OF 10



PLAN 8-4C
 01 LEVEL
 1/8"=1'-0"



PLAN 8-6A
 01 LEVEL, ALTERNATE WINCH DECK
 1/8"=1'-0"

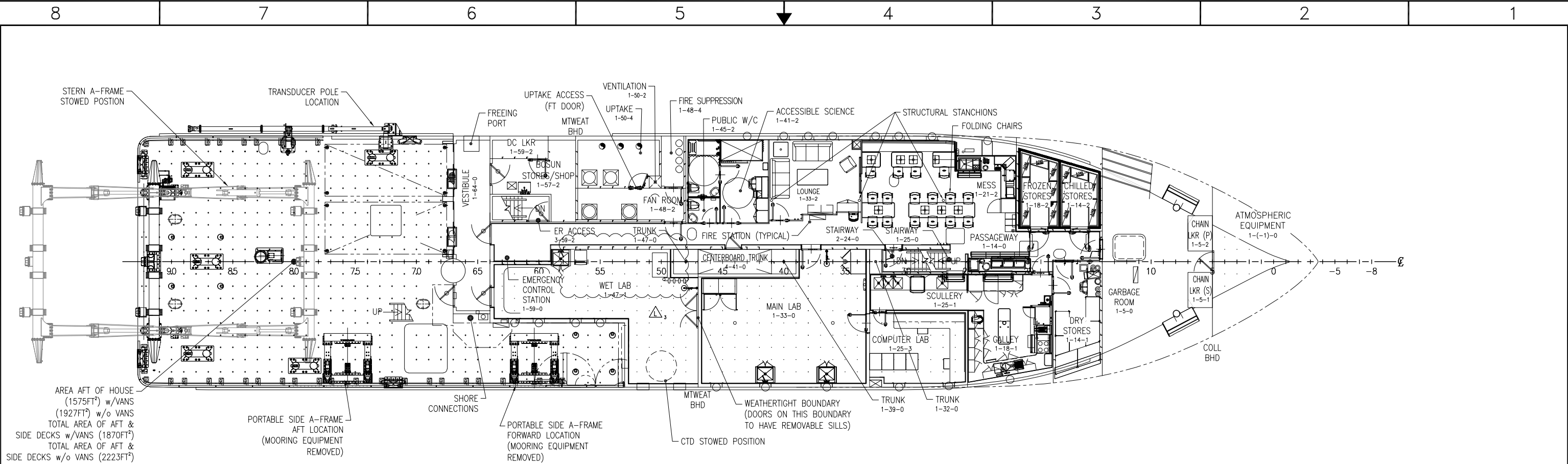
PROFESSIONAL ENGINEER STAMP

OREGON STATE UNIVERSITY
 CORVALLIS, OR 97331

199'-6" REGIONAL CLASS RESEARCH VESSEL

GENERAL
 ARRANGEMENT
 PLAN VIEW - MAIN DECK & 01 LEVEL

SIZE D	FSCM CAGE NO. 64513	DRAWING NO. 6096-070-001	REV L
SCALE: NONE	HULL # 6096 6097 6098		SHEET 8 OF 10

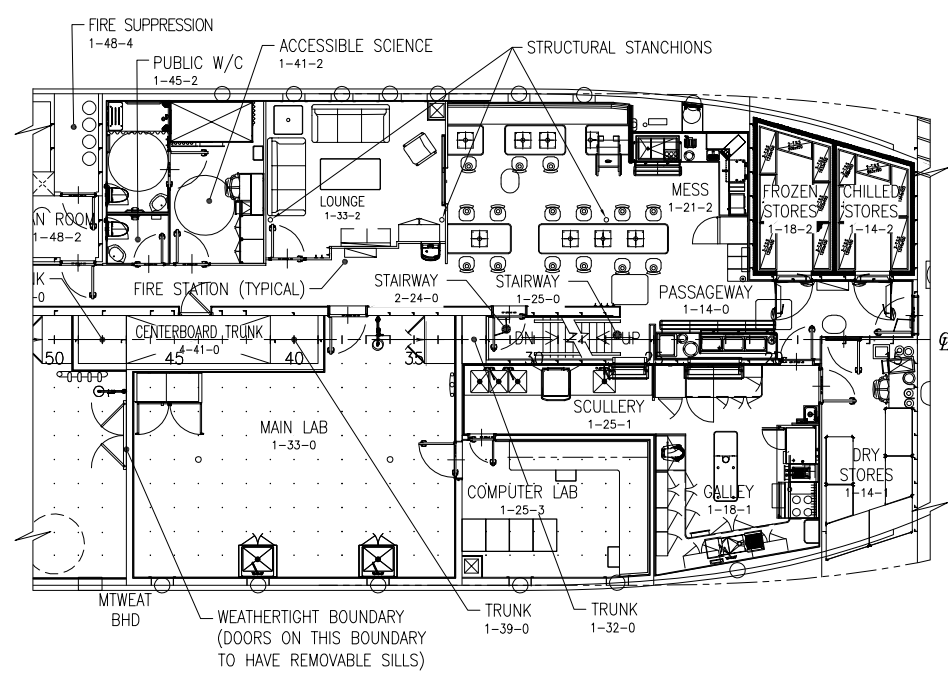


AREA AFT OF HOUSE
(1575FT²) w/VANS
(1927FT²) w/o VANS
TOTAL AREA OF AFT &
SIDE DECKS w/VANS (1870FT²)
TOTAL AREA OF AFT &
SIDE DECKS w/o VANS (2223FT²)

PORTABLE SIDE A-FRAME
AFT LOCATION
(MOORING EQUIPMENT
REMOVED)

PORTABLE SIDE A-FRAME
FORWARD LOCATION
(MOORING EQUIPMENT
REMOVED)

PLAN 9-4C
MAIN DECK
HULL 6096 & 6098
1/8"=1'-0"



PLAN 9-4A
MAIN DECK
HULL 6097
1/8"=1'-0"

PROFESSIONAL ENGINEER STAMP

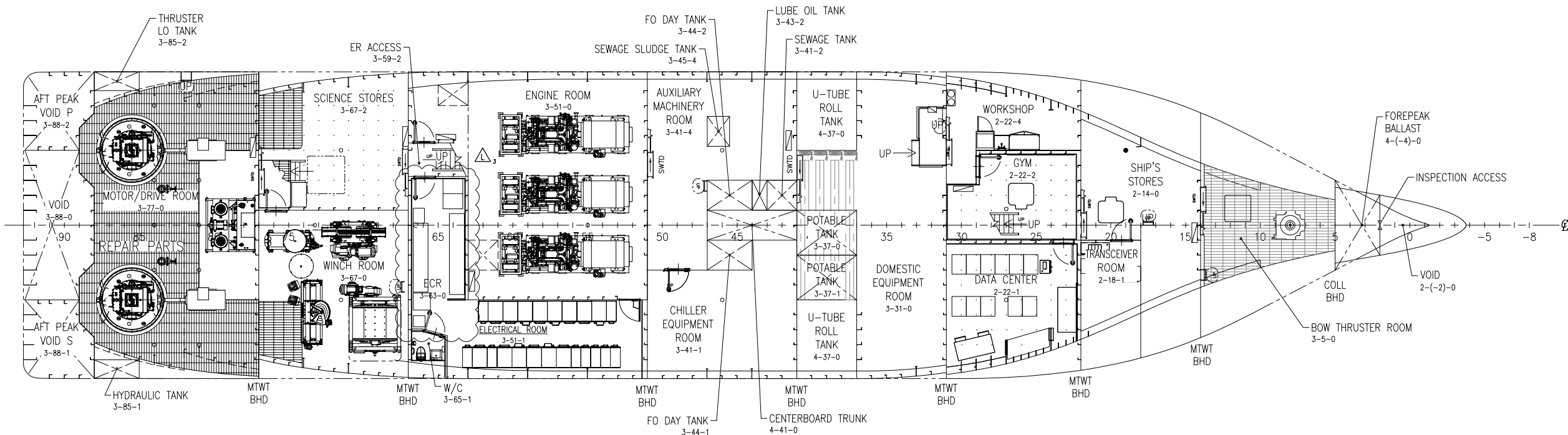
OREGON STATE UNIVERSITY
CORVALLIS, OR 97331

199'-6" REGIONAL CLASS RESEARCH VESSEL

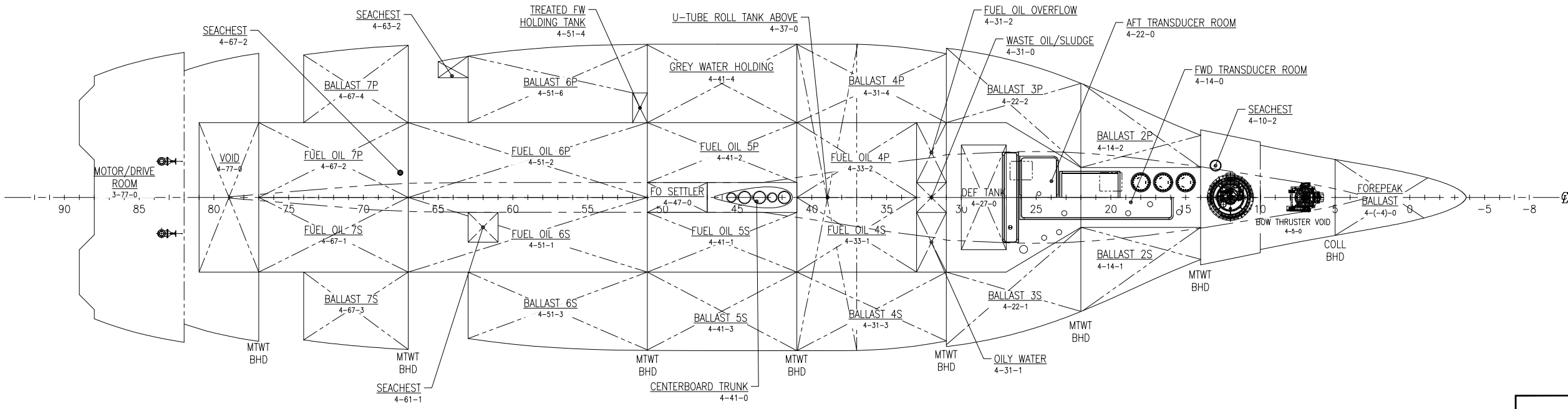
GENERAL
ARRANGEMENT

PLAN VIEW - MAIN DECK & 01 LEVEL

SIZE D	FSCM CAGE NO. 64513	DRAWING NO. 6096-070-001	REV L
SCALE: NONE	HULL #: 6096 6097 6098		SHEET 9 OF 10



PLAN 10-5C
 HOLD & 1ST PLATFORM DECKS
 1/8"=1'-0"



PLAN 10-5A
 TANK TOP
 1/8"=1'-0"

OREGON STATE UNIVERSITY
 CORVALLIS, OR 97331

199'-6" REGIONAL CLASS RESEARCH VESSEL

GENERAL ARRANGEMENT
 PLAN VIEW - TANK TOP, HOLD & 1ST PLATFORM

SIZE	FSCM CAGE NO.	DRAWING NO.	REV
D	64513	6096-070-001	L
SCALE:	NONE	HULL #: 6096 6097 6098	SHEET 10 OF 10

PROFESSIONAL ENGINEER STAMP