

SHEET LIST	
SHT	TITLE
1	GENERAL NOTES, REFERENCES, & EQUIPMENT LIST
2	CABLE BLOCK DIAGRAM - MAIN RACK PA STATIONS & EXTERNAL CONNECTIONS
3	CABLE BLOCK DIAGRAM - SPEAKER LOOPS IN 03,02 & 01 LEVEL
4	CABLE BLOCK DIAGRAM - SPEAKER LOOPS IN MAIN DECK AND HOLD DECK LEVEL
5	CABLE BLOCK DIAGRAM - EOT SYSTEM
6	SYSTEM ARRANGEMENT - 03 LEVEL
7	SYSTEM ARRANGEMENT - 02 LEVEL
8	SYSTEM ARRANGEMENT - 01 LEVEL
9	SYSTEM ARRANGEMENT - MAIN DECK
10	SYSTEM ARRANGEMENT - HOLD & 1ST PLATFORM DECKS

GENERAL NOTES

- SHIELDED TWISTED PAIR CABLES MUST BE USED FOR THE LOUDSPEAKER LOOPS.
- ALL JUNCTION BOXES ARE YARDS SUPPLY (SHOWN AS 'JB' & DOTS).
- SHIPS CABLES ARE YARDS SUPPLY.
- PA-ZONES:
 - PA GROUP 1: ENTIRE VESSEL (ALL CALL) -> ALL ZONES.
 - PA GROUP 2: ENTIRE INTERIOR OF VESSEL -> ZONE#5,#6,#7,#8.
 - PA GROUP 3: WEATHER DECK -> ZONE#1.
 - PA GROUP 4: WORKING DECK AFT (MAIN DECK AND 01 LEVEL) -> ZONE#2.
 - PA GROUP 5: MACHINERY SPACES -> ZONE#3.
 - PA GROUP 6: ACCOMMODATION SPACES -> ZONE#4.
 - PA GROUP 7: PASSAGEWAYS, MESS, LOUNGE, GALLEY -> ZONE#5.
 - PA GROUP 8: LABS, VAN LOCATIONS, DATA CENTER -> ZONE#6.
 - PA GROUP 9: LOUDHAILER -> ZONE#7.
 - PA GROUP 10: MOORING -> ZONE#8.
- ETHERNET CABLE RUNS SHOULD NOT EXCEED 100M
- TO GET FULL REDUNDANCY FOR GA-SOUND COVERAGE, SOME OF THE LOUDSPEAKING TELEPHONES MAY HAVE TO BE USED AS PART OF LOOP-B.
- THE CONSTRUCTION OF CABLE SHALL BE IN ACCORDANCE WITH 'MIL-DTL-24643' CABLES, ELECTRIC, LOW SMOKE HALOGEN-FREE, FOR SHIPBOARD USE, IEEE45, RECOMMENDED PRACTICE OF ELECTRIC INSTALLATIONS ON SHIPBOARD; OR IEC 60092, ELECTRICAL INSTALLATION IN SHIPS FOR MARINE, LOW-SMOKE, HALOGEN-FREE, PVC-FREE, FLAME-RETARDANT CABLE, AS ALLOWED BY THE REGULATIONS. CABLES SHALL BE NEXANS MPRX CABLE IN THE SIZES INDICATED IN THE BODY OF THE DRAWING.

REVISIONS						
REV	SH	ZONE	ITEM	DESCRIPTION	DATE	APPVL SIG & ORG
P1	ALL	ALL	-	PRELIMINARY ISSUE	04/08/18	DV
P2	ALL	ALL	-	ISSUE FOR APPROVAL	07/02/18	DV
P3	ALL	ALL	-	AMENDED DRAWING TO REFLECT GENERAL ARRANGEMENT CHANGES	07/23/18	DV
-	ALL	ALL	-	ADDRESSED GENERAL DRAWING COMMENTS	05/29/19	DV
-	ALL	ALL	-	SPLIT THE CABLING DRAWING TO MULTIPLE SHEETS FOR BETTER VISIBILITY	05/29/19	DV
-	ALL	ALL	1	ADDED EOT CABLING DRAWING	05/29/19	DV
-	2	ALL	2	CORRECTED EXTERNAL PA STATIONS TO ROUTE VIA DIAL PHONE SYSTEM	04/03/20	DV
-	1	ALL	3	UPDATED EQUIPMENT LIST TO REFLECT MFG UPDATE	04/03/20	DV
-	3	B1	4	ADDED SPEAKER TO DECK OPS STATION	04/10/20	DV
-	8	B6				
-	5	ALL	5	ADDED CABLING TO IMACS AND VDR	04/10/20	DV

PA-GA EQUIPMENT LIST					
ID	PART #	DESCRIPTION	QTY	MANUFACTURER	REMARKS
1	2810010054	CAB42FW PRE-ASSEMBLED CABINET FLOOR 19" 42 HU	1	ZENITEL	
2	9PX30000GRT	2200VA UPS	1	EATON	LOCATED IN CAB42FW CABINET
3	9PXEBM72RT	EXTENDED BATTERY MODULE FOR 2-3kVA 2U UPS	1	EATON	LOCATED IN CAB42FW CABINET
4A	9011810012	POWER MODULE 208 AC MAIN, 208 AC EMERGENCY TYPE C	1	ZENITEL	LOCATED IN CAB42FW CABINET
4B	INDRELAY-MS	RELAY OUTPUT CARD FOR 9PX UPS	1	EATON	LOCATED IN CAB42FW CABINET
5	1154002001	ENSER-8 EXIGO MANAGED NETWORK SWITCH, 24/48VDC	2	ZENITEL	LOCATED IN CAB42FW CABINET
6	1023697006	EPIPR-6 EXIGO POWER INJECTOR, SPARE PAIR POE, 6 PORTS	2	ZENITEL	LOCATED IN CAB42FW CABINET
7	1023597000	EPMN-120 EXIGO POWER SUPPLY FOR ENSER-8, 120W 90-260VAC TO 48VDC	2	ZENITEL	LOCATED IN CAB42FW CABINET
8	2220018010	PATCH CABLE UTP CAT.5E 0.5M GREY	6	ZENITEL	LOCATED IN CAB42FW CABINET
9	2220018019	PATCH CABLE UTP CAT.6E 1M GREY	16	ZENITEL	LOCATED IN CAB42FW CABINET
10	1023000100	ESC1 EXIGO SYSTEM CONTROLLER PACKAGE	2	ZENITEL	LOCATED IN CAB42FW CABINET
11	1023102200	ENA2200 EXIGO AMPLIFIER 2 X 200W	8	ZENITEL	LOCATED IN CAB42FW CABINET
12	2340120009	SPA-REL-V3 MULTIPURPOSE POTENTIAL FREE RELAY CONTACT	2	ZENITEL	LOCATED IN CAB42FW CABINET
13	3005010176	SPA-REL-V2 MULTIPURPOSE POTENTIAL FREE RELAY CONTACT	2	ZENITEL	LOCATED IN CAB42FW CABINET
14	1023200033	ECPIR-3P EXIGO CALL PANEL, PTT + 3 BUTTONS	2	ZENITEL	
15	1023253008	EXIGO BUTTON EXPANSION MODULE, 8 BUTTONS	4	ZENITEL	CONNECTED TO ECPIR-3P
16	1023533011	EMMAR-1H EXIGO HANDHELD MICROPHONE, 1 BUTTON	2	ZENITEL	CONNECTED TO ECPIR-3P
17	2340300001	SPA-AC1PW GEN. ALARM BUTTON -PULS	1	ZENITEL	
18	2131000138	CL-200T - CEILING LOUDSPEAKER WITH STEEL FIRE DOME	50	ZENITEL	
19	2131000206	VLS-15T/F HORN SPEAKER 15W, WATERTIGHT - IP-66	31	ZENITEL	
20	2340020016	SAFE-561IP(T) VOICE ALARM LOUDSPEAKER 6W- IP55	2	ZENITEL	
21	3005020052	SB01 SOCKETBOX WP F/PML-5 FOR P-290	3	ZENITEL	
22	3006090313	64P3004 PLUGG C16-1 4-PIN MALE	3	ZENITEL	USED FOR SB01/VLS-15
23	1008122010	TFIE-1 TURBINE FULL-SIZE INDUSTRIAL IP EXTENDED-1	6	ZENITEL	
24	3006102032	EHS-2200 ORANGE ROTARY LIGHT 220 VAC	5	ZENITEL	
EOT EQUIPMENT LIST					
31	000442	CONSTANT RINGING BELL, 90DB	2	EDWARDS SIGNAL	
32	SCT1468	EOT TRANSCEIVER, ECR	1	BEIER	
33	SCT1469	EOT TRANSCEIVER, WHEELHOUSE	1	BEIER	
INSTALLATION CABLES (ALL CABLES ARE TO BE LSZH)					
C1	TBD	* CONDUCTOR **AWG LSZH POWER CABLE	-	TBD	NOTED AS MPRX **X**
C2	TBD	INDIVIDUALLY SCREENED TWISTED * PAIR 18AWG LSZH CONTROL CABLE	-	TBD	NOTED AS TX(I) 2X*X18AWG
C3	TBD	CATEGORY 7 800 S/FTP LSZH ETHERNET CABLE	-	TBD	NOTED AS S/FTP CAT7

2. SPEAKERS ARE SHOWN IN GENERAL VICINITY OF EACH SPACE. FINAL LOCATION WITHIN THE SPACE TO BE DETERMINED

1. ENTERTAINMENT SYSTEM MUTE SIGNAL INTERFACE TO BE FINALIZED

RESERVATIONS	
NO.	TITLE
9	VOYAGE DATA RECORDER 6096-444-001
8	ELECTRONIC NAVIGATION SYSTEMS 6096-423-001
7	IMACS CABLE BLOCK DIAGRAM 6096-436-001
6	FIRE DETECTION SYSTEM 6096-436-015
5	TELEPHONE SYSTEMS 6096-432-001
4	ELECTRICAL ONE LINE DIAGRAM 6096-300-001
3	DC SYSTEMS ONE LINE DIAGRAM 6096-313-002
2	GENERAL ARRANGEMENT 6096-070-001
1	TECHNICAL SPECIFICATION (GLOSTEN) 12100

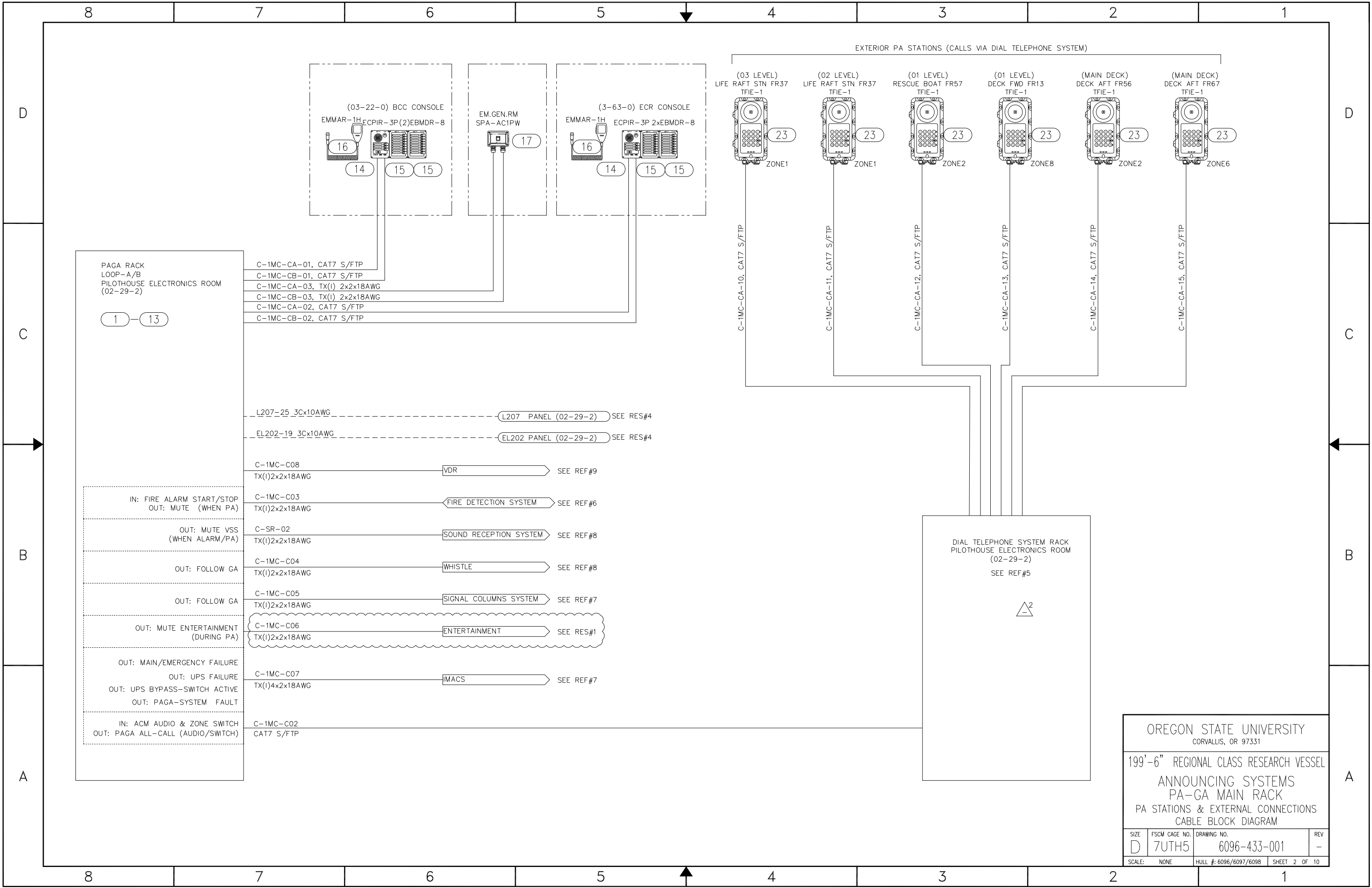
REFERENCE PLANS

DRAWING CONFIDENTIALITY STATEMENT

THIS DRAWING IS TO BE USED FOR CONSTRUCTION OF THE REGIONAL CLASS RESEARCH VESSELS. USE AND/OR REPRODUCTION OF THIS DRAWING AND FURTHER DISSEMINATION IS AUTHORIZED ONLY AS DIRECTED BY GULF ISLAND SHIPYARDS OR OREGON STATE UNIVERSITY.

<p>301 GULF ISLAND ROAD HOUMA, LA 70363 PHONE: (985) 872-2305 CONTRACT/PO NO. 184162</p>	<p>OREGON STATE UNIVERSITY CORVALLIS, OR 97331</p>	
	<p>199'-6" REGIONAL CLASS RESEARCH VESSEL ANNOUNCING SYSTEMS TITLE SHEET CABLE BLOCK DIAGRAM & SYSTEM ARRANGEMENT</p>	
<p>DRAWN: BT 04/03/20 CHECKED: JJ 04/03/20 APPROVED: DV 04/03/20</p>	<p>SIZE: D FSCM CAGE NO.: 7UTH5 DRAWING NO.: 6096-433-001</p>	<p>REV: - SCALE: NONE HULL #: 6096/6097/6098 SHEET 1 OF 10</p>

PROFESSIONAL ENGINEER STAMP

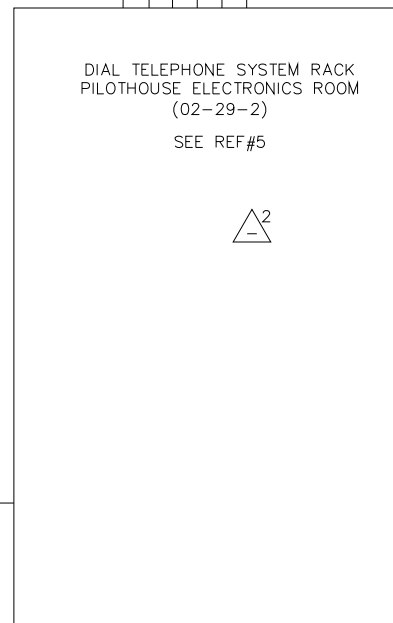
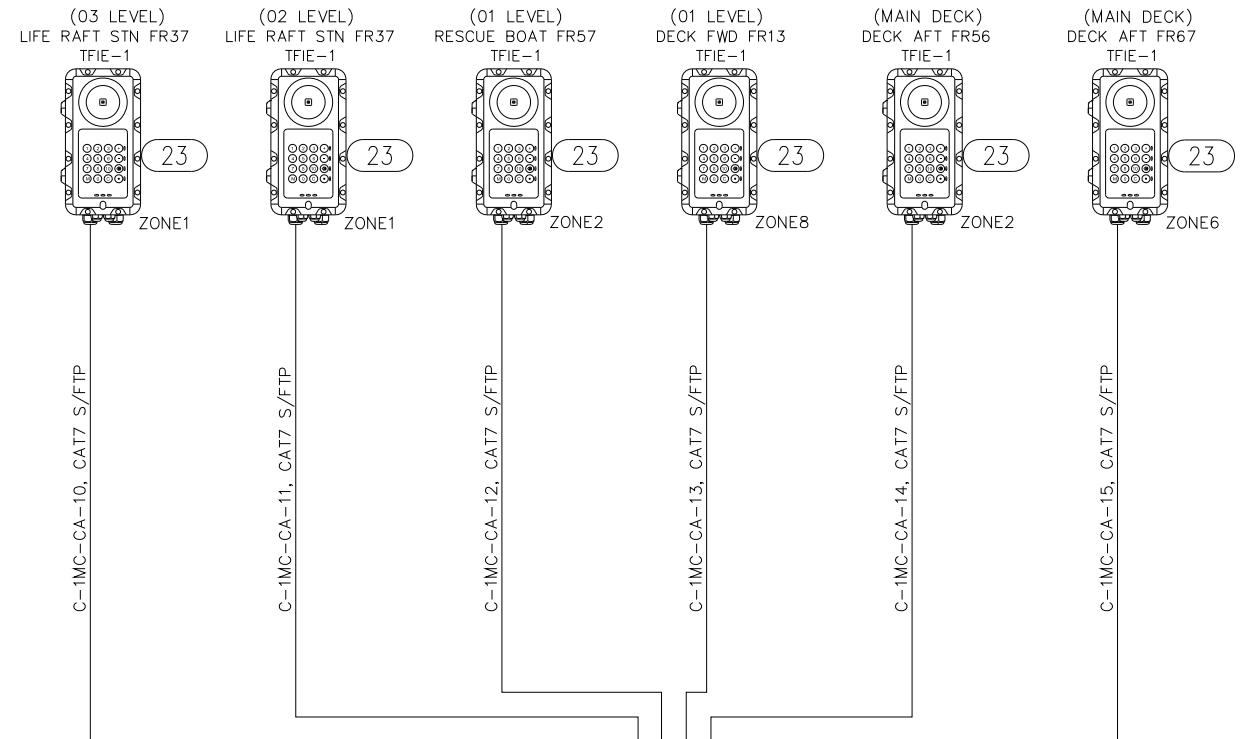


C-1MC-CA-01, CAT7 S/FTP
 C-1MC-CB-01, CAT7 S/FTP
 C-1MC-CA-03, TX(1) 2x2x18AWG
 C-1MC-CB-03, TX(1) 2x2x18AWG
 C-1MC-CA-02, CAT7 S/FTP
 C-1MC-CB-02, CAT7 S/FTP

L207-25 3Cx10AWG ----- L207 PANEL (02-29-2) SEE RES#4
 EL202-19 3Cx10AWG ----- EL202 PANEL (02-29-2) SEE RES#4

C-1MC-C08 TX(1)2x2x18AWG → VDR SEE REF#9
 C-1MC-C03 TX(1)2x2x18AWG → FIRE DETECTION SYSTEM SEE REF#6
 C-SR-02 TX(1)2x2x18AWG → SOUND RECEPTION SYSTEM SEE REF#8
 C-1MC-C04 TX(1)2x2x18AWG → WHISTLE SEE REF#8
 C-1MC-C05 TX(1)2x2x18AWG → SIGNAL COLUMNS SYSTEM SEE REF#7
 C-1MC-C06 TX(1)2x2x18AWG → ENTERTAINMENT SEE RES#1
 C-1MC-C07 TX(1)4x2x18AWG → IMACS SEE REF#7
 C-1MC-C02 CAT7 S/FTP

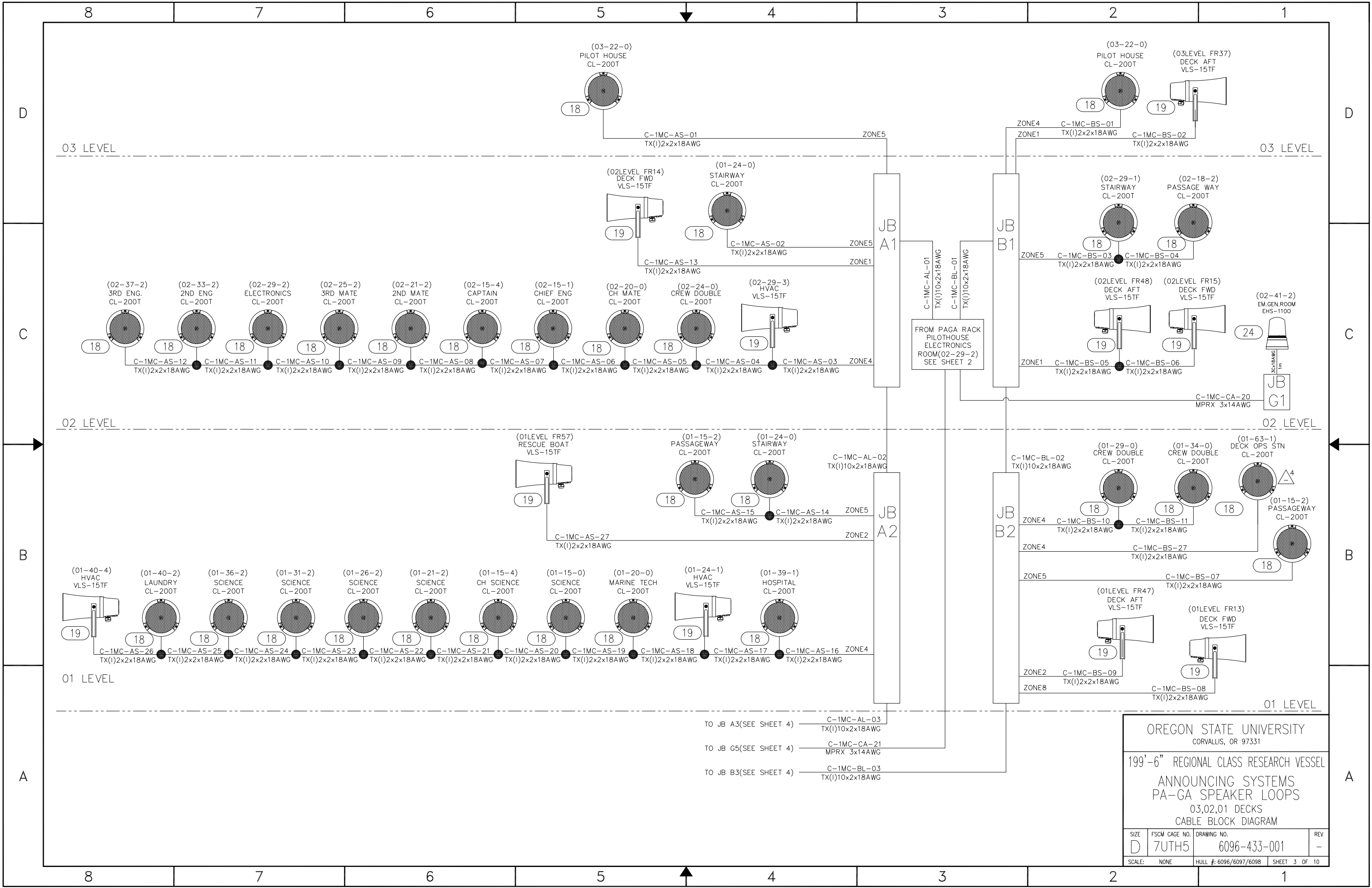
EXTERIOR PA STATIONS (CALLS VIA DIAL TELEPHONE SYSTEM)



OREGON STATE UNIVERSITY
 CORVALLIS, OR 97331

199'-6" REGIONAL CLASS RESEARCH VESSEL
 ANNOUNCING SYSTEMS
 PA-GA MAIN RACK
 PA STATIONS & EXTERNAL CONNECTIONS
 CABLE BLOCK DIAGRAM

SIZE	FSCM CAGE NO.	DRAWING NO.	REV
D	7UTH5	6096-433-001	-
SCALE:	NONE	HULL #: 6096/6097/6098	SHEET 2 OF 10

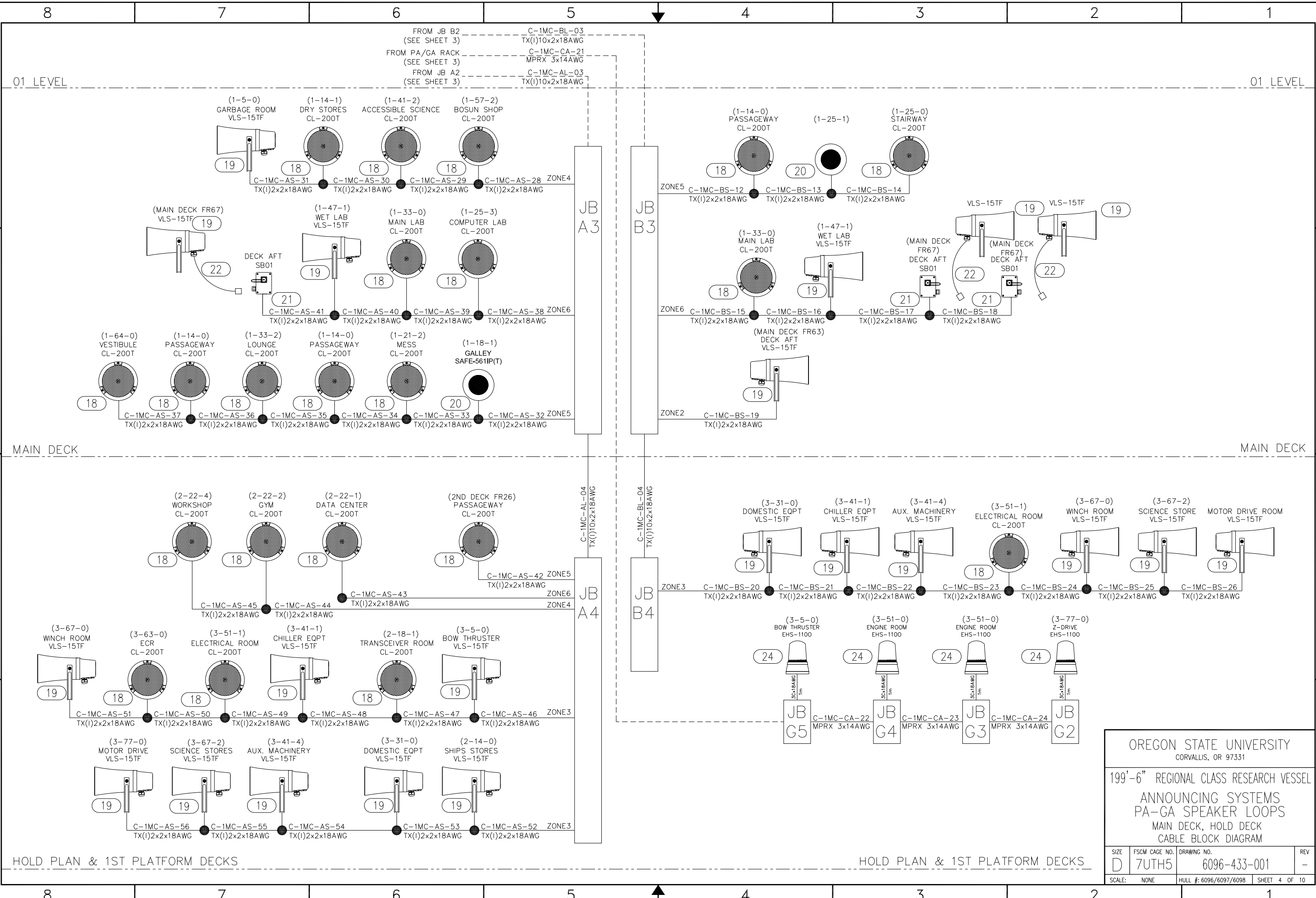


OREGON STATE UNIVERSITY
CORVALLIS, OR 97331

199'-6" REGIONAL CLASS RESEARCH VESSEL

ANNOUNCING SYSTEMS
PA-GA SPEAKER LOOPS
03,02,01 DECKS
CABLE BLOCK DIAGRAM

SIZE	FSCM CAGE NO.	DRAWING NO.	REV
D	7UTH5	6096-433-001	-
SCALE:	NONE	HULL #: 6096/6097/6098	SHEET 3 OF 10

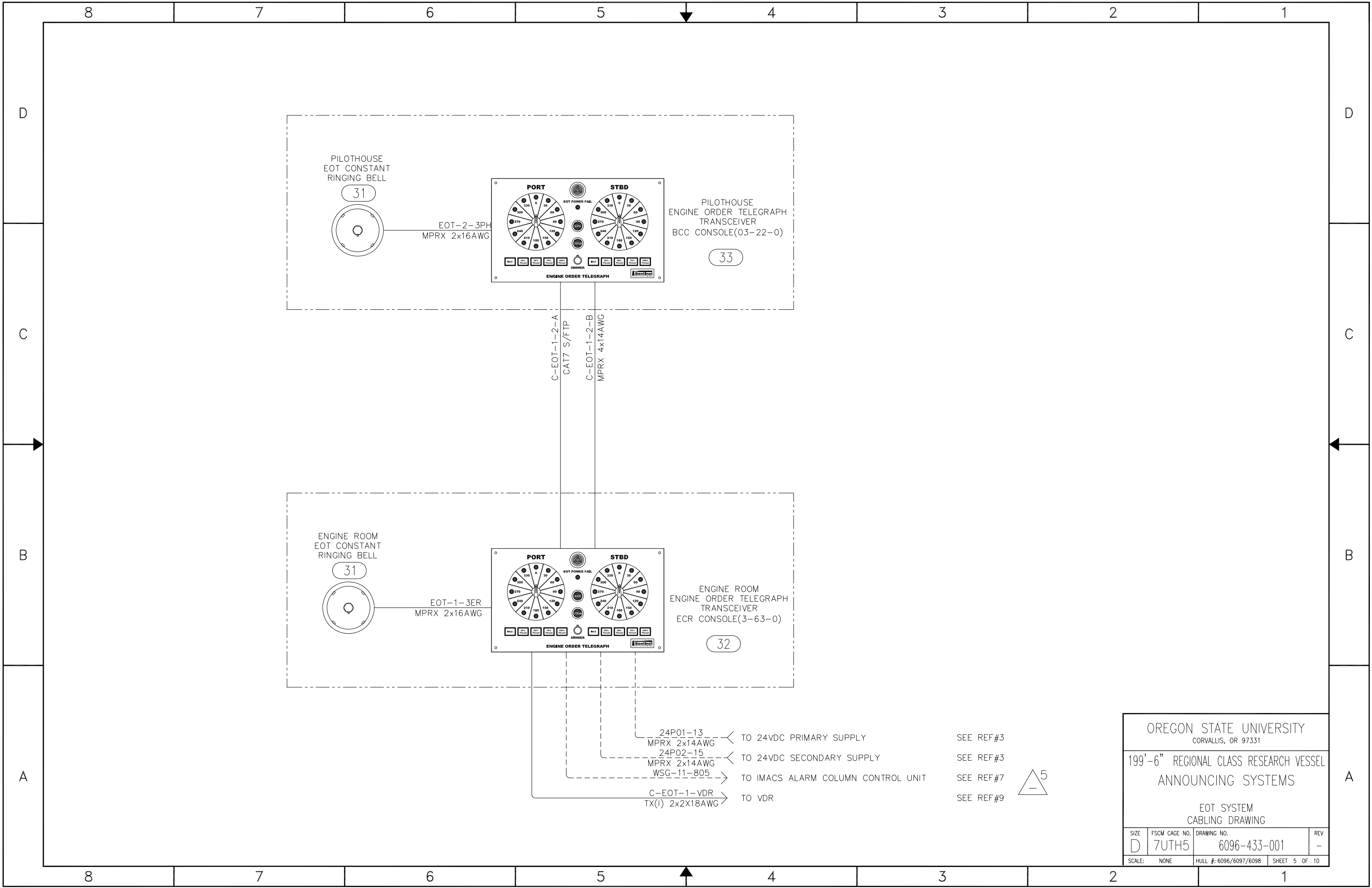


OREGON STATE UNIVERSITY
 CORVALLIS, OR 97331

199'-6" REGIONAL CLASS RESEARCH VESSEL

ANNOUNCING SYSTEMS
 PA-GA SPEAKER LOOPS
 MAIN DECK, HOLD DECK
 CABLE BLOCK DIAGRAM

SIZE D	FSCM CAGE NO. 7UTH5	DRAWING NO. 6096-433-001	REV -
SCALE: NONE	HULL #: 6096/6097/6098	SHEET 4 OF 10	



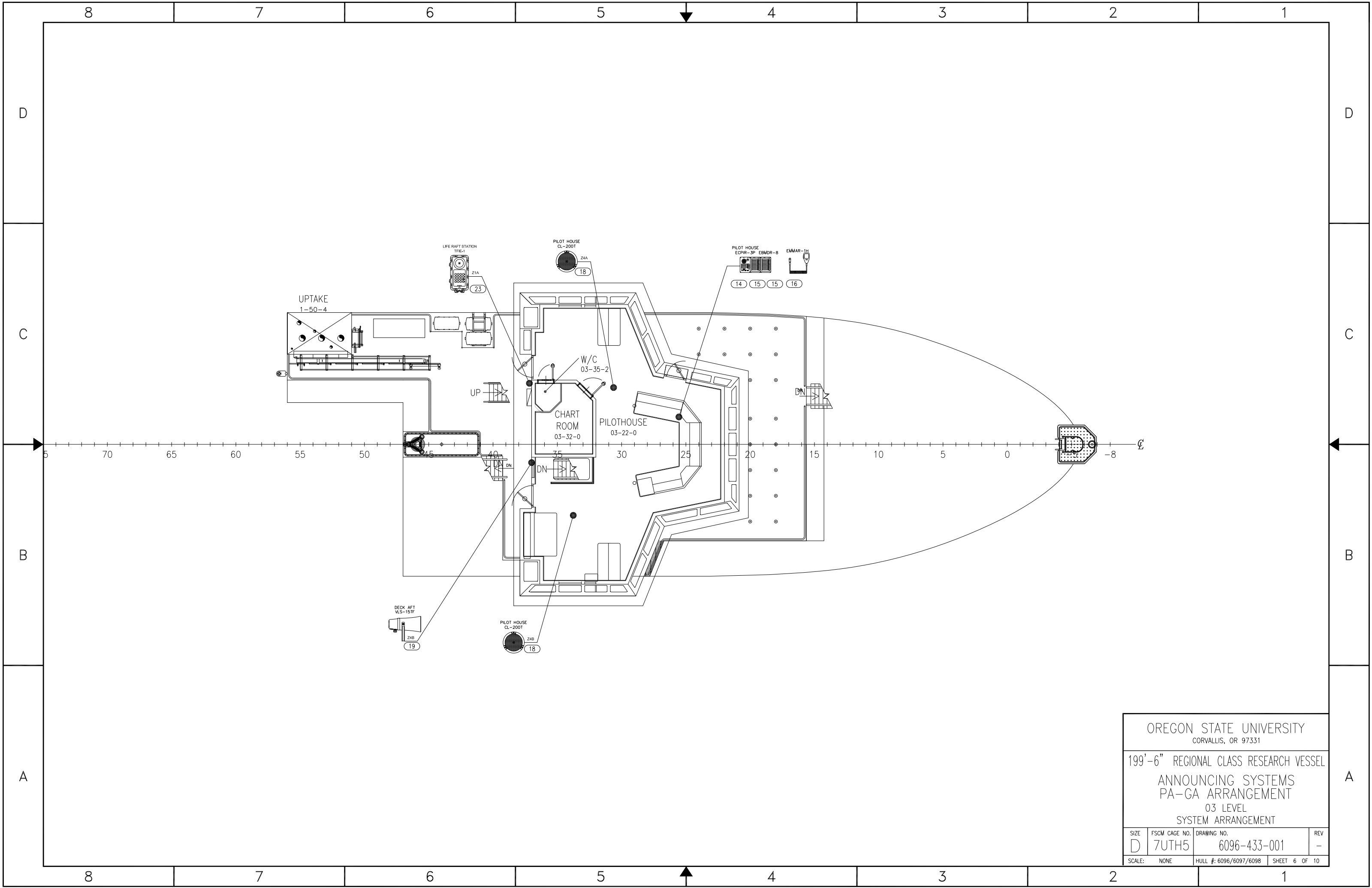
OREGON STATE UNIVERSITY
CORVALLIS, OR 97331

199'-6" REGIONAL CLASS RESEARCH VESSEL
ANNOUNCING SYSTEMS

EOT SYSTEM
CABLING DRAWING

SIZE D	FSCM CAGE NO. 7UTH5	DRAWING NO. 6096-433-001	REV -
SCALE: NONE		HULL #: 6096/6097/6098	SHEET 5 OF 10

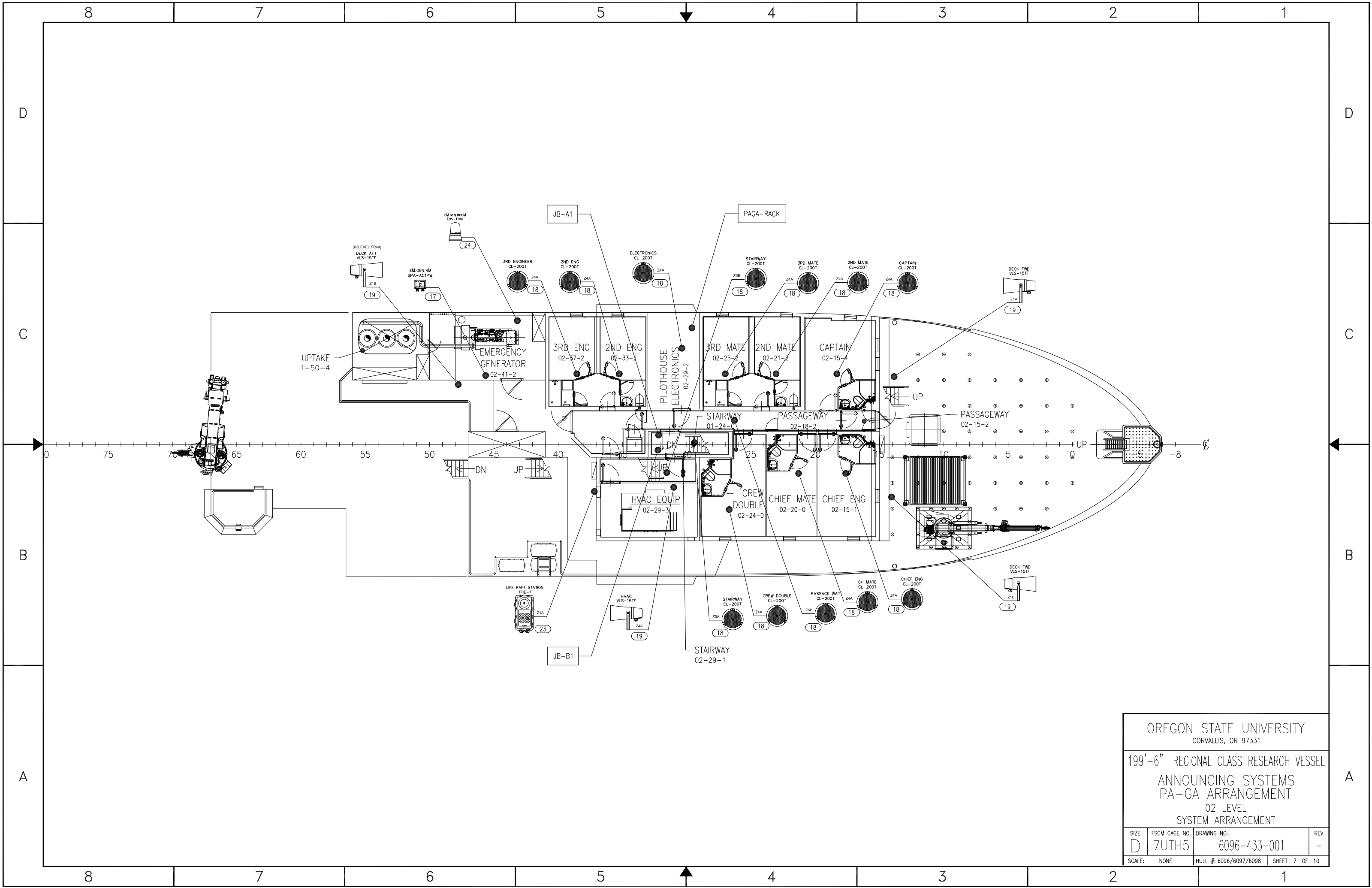




OREGON STATE UNIVERSITY
CORVALLIS, OR 97331

199'-6" REGIONAL CLASS RESEARCH VESSEL
ANNOUNCING SYSTEMS
PA-GA ARRANGEMENT
03 LEVEL
SYSTEM ARRANGEMENT

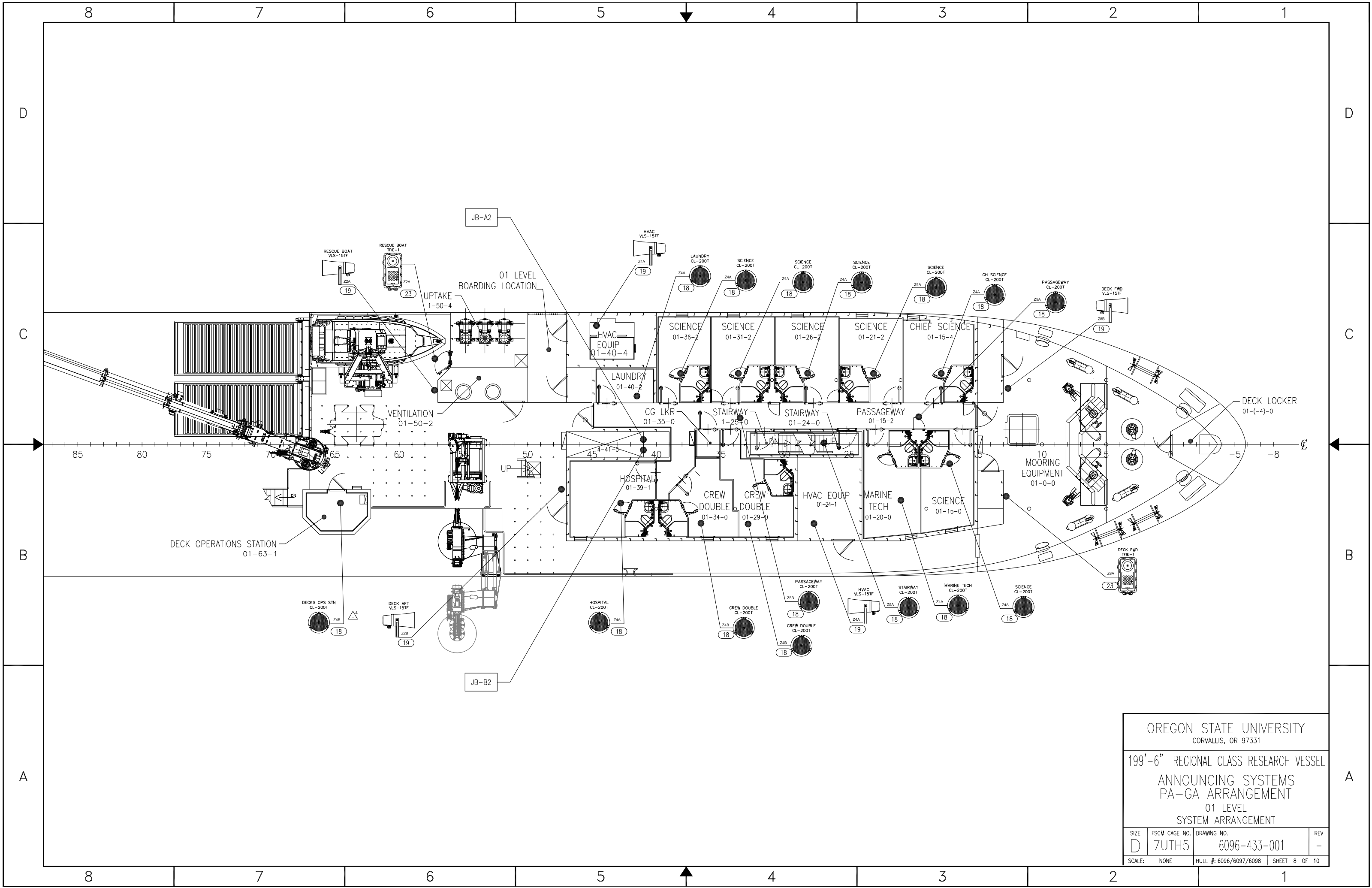
SIZE D	FSCM CAGE NO. 7UTH5	DRAWING NO. 6096-433-001	REV -
SCALE: NONE		HULL #: 6096/6097/6098	SHEET 6 OF 10



OREGON STATE UNIVERSITY
CORVALLIS, OR 97331

199'-6" REGIONAL CLASS RESEARCH VESSEL
ANNOUNCING SYSTEMS
PA-GA ARRANGEMENT
02 LEVEL
SYSTEM ARRANGEMENT

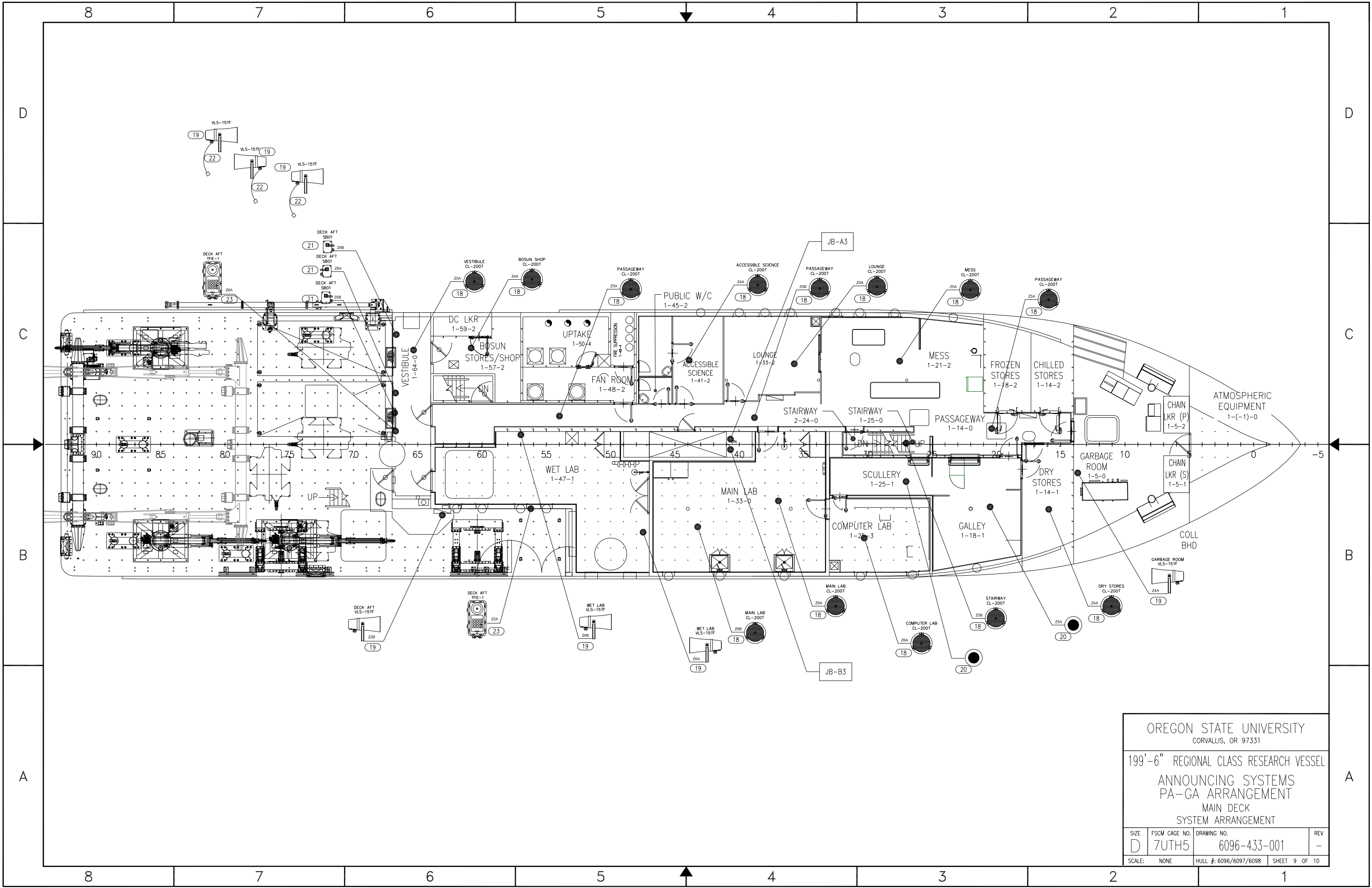
SIZE D	FSCM CAGE NO. 7UTH5	DRAWING NO. 6096-433-001	REV -
SCALE: NONE		HULL #: 6096/6097/6098	SHEET 7 OF 10



OREGON STATE UNIVERSITY
CORVALLIS, OR 97331

199'-6" REGIONAL CLASS RESEARCH VESSEL
ANNOUNCING SYSTEMS
PA-GA ARRANGEMENT
01 LEVEL
SYSTEM ARRANGEMENT

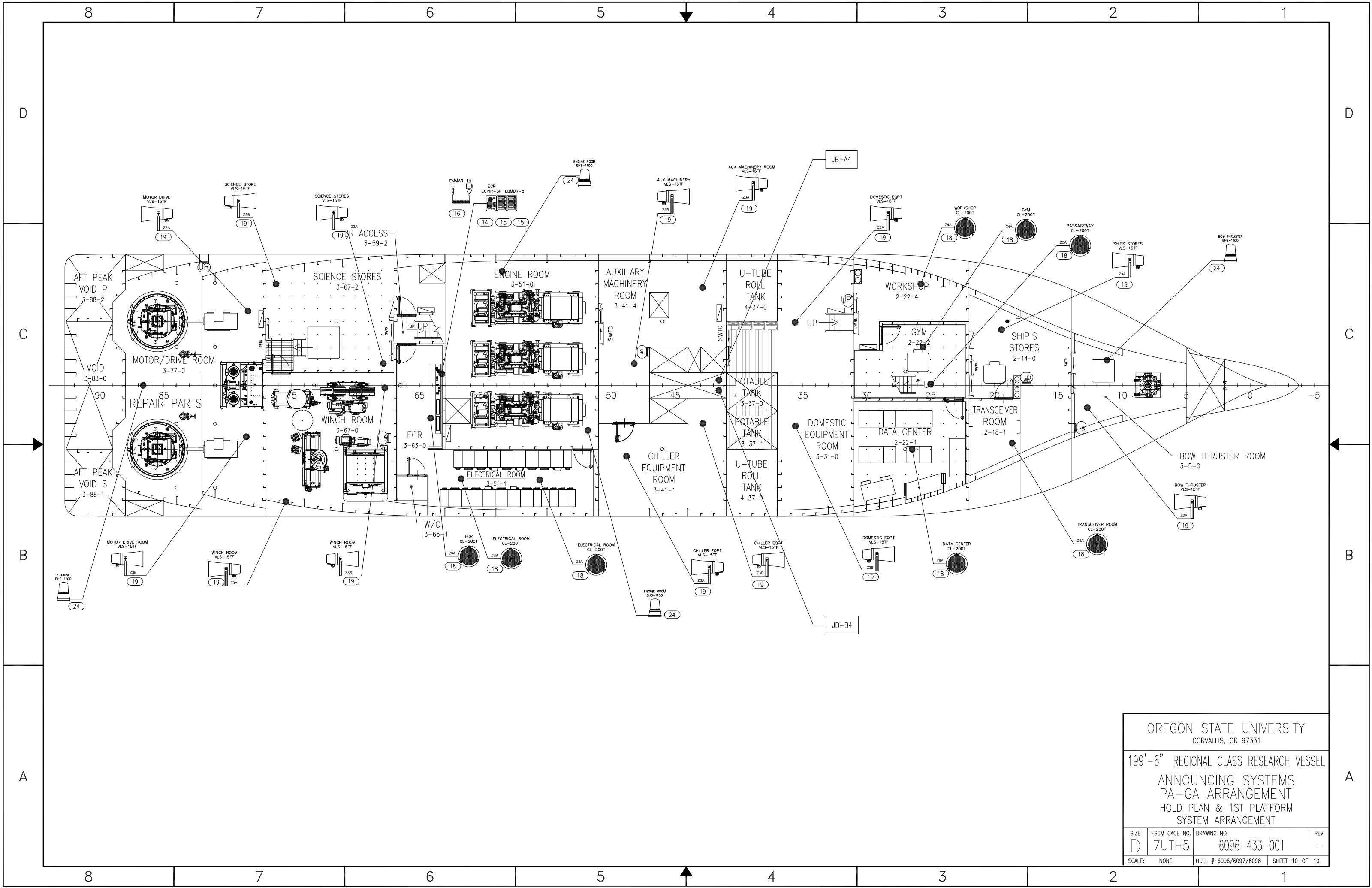
SIZE D	FSCM CAGE NO. 7UTH5	DRAWING NO. 6096-433-001	REV -
SCALE: NONE		HULL #: 6096/6097/6098	SHEET 8 OF 10



OREGON STATE UNIVERSITY
CORVALLIS, OR 97331

199'-6" REGIONAL CLASS RESEARCH VESSEL
ANNOUNCING SYSTEMS
PA-GA ARRANGEMENT
MAIN DECK
SYSTEM ARRANGEMENT

SIZE D	FSCM CAGE NO. 7UTH5	DRAWING NO. 6096-433-001	REV -
SCALE: NONE		HULL #: 6096/6097/6098	SHEET 9 OF 10



OREGON STATE UNIVERSITY
CORVALLIS, OR 97331

199'-6" REGIONAL CLASS RESEARCH VESSEL
ANNOUNCING SYSTEMS
PA-GA ARRANGEMENT
HOLD PLAN & 1ST PLATFORM
SYSTEM ARRANGEMENT

SIZE D	FSCM CAGE NO. 7UTH5	DRAWING NO. 6096-433-001	REV -
SCALE: NONE		HULL #: 6096/6097/6098	SHEET 10 OF 10