



Oregon State University

RESER STADIUM WESTSIDE COMPLETION FOOD SERVICE EQUIPMENT

PROJECT NUMBER: 1994-20

ITB #2022-008423

ADDENDUM NO. TWO (2)

ISSUE DATE: June 13, 2022

CONTRACT ADMINISTRATOR:

Matt Hausman, Construction Contracts Officer

Construction Contracts Administration

Email: ConstructionContracts@oregonstate.edu

This Addendum is hereby issued to inform you of the following revisions and or clarifications to the above-referenced Solicitation and/or the Contract Documents for the Project, to the extent they have been modified herein. Any conflict or inconsistency between this Addendum and the Solicitation Document or any previous addenda will be resolved in favor of this Addendum. Proposals shall conform to this Addendum. Unless specifically changed by this Addendum, all other requirements, terms and conditions of the Solicitation Document and or Contract Documents, and any previous addenda, remain unchanged and can be modified only in writing by OSU. The following changes are hereby made:

BID DUE DATE/TIME

Item 1 The Bid Due Date/Time has been extended until 6/16/2022 at 2:00 PM PT.

QUESTION AND ANSWER:

Item 2 Q: Regarding Addendum 1: Item # 3, sales tax, we are showing that there is no state or city sales tax in Oregon. What taxes should be included in our bid?

A: It is the responsibility of the Bidder to determine what, if any, taxes are applicable on the project.

Item 3 Q: Regarding Addendum 1: Item # 7 & #26, references plan sheet QF700-4 & QF700-5.

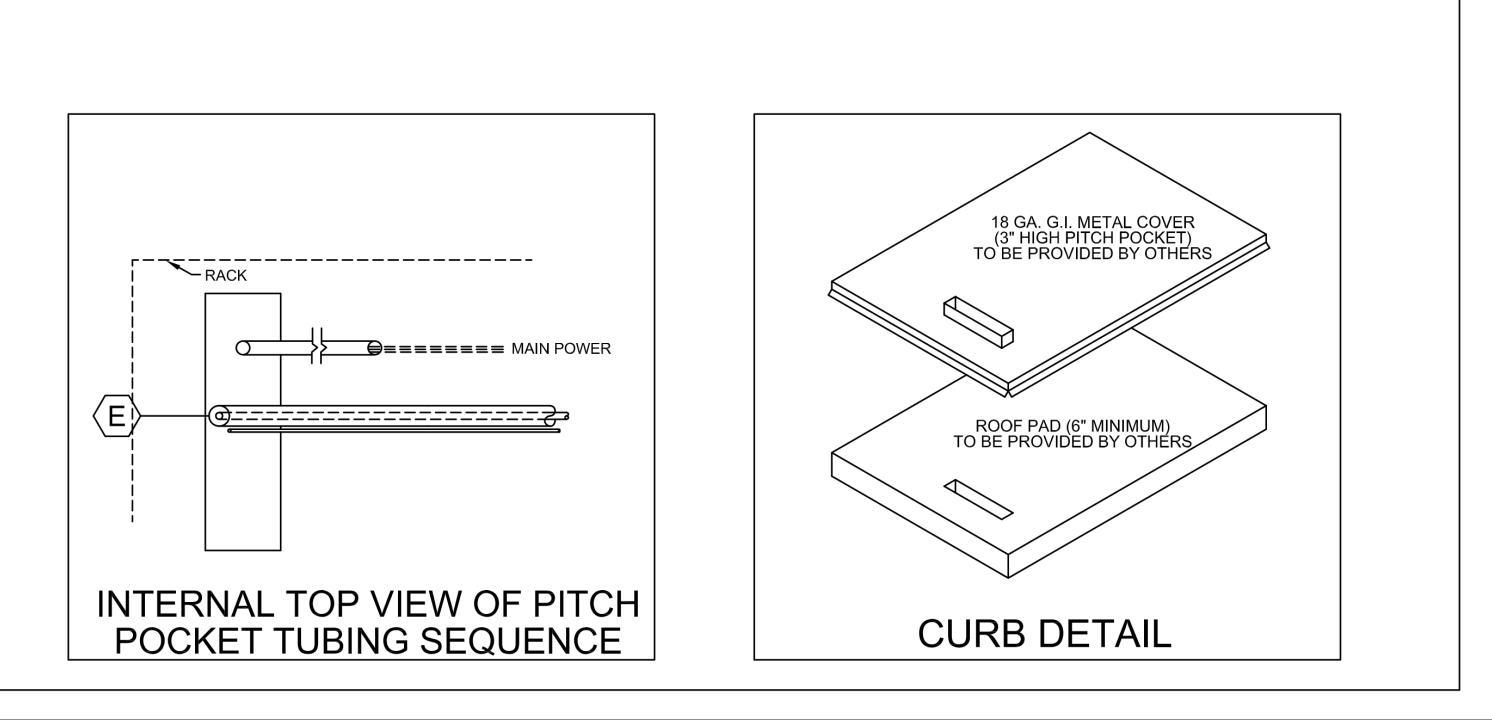
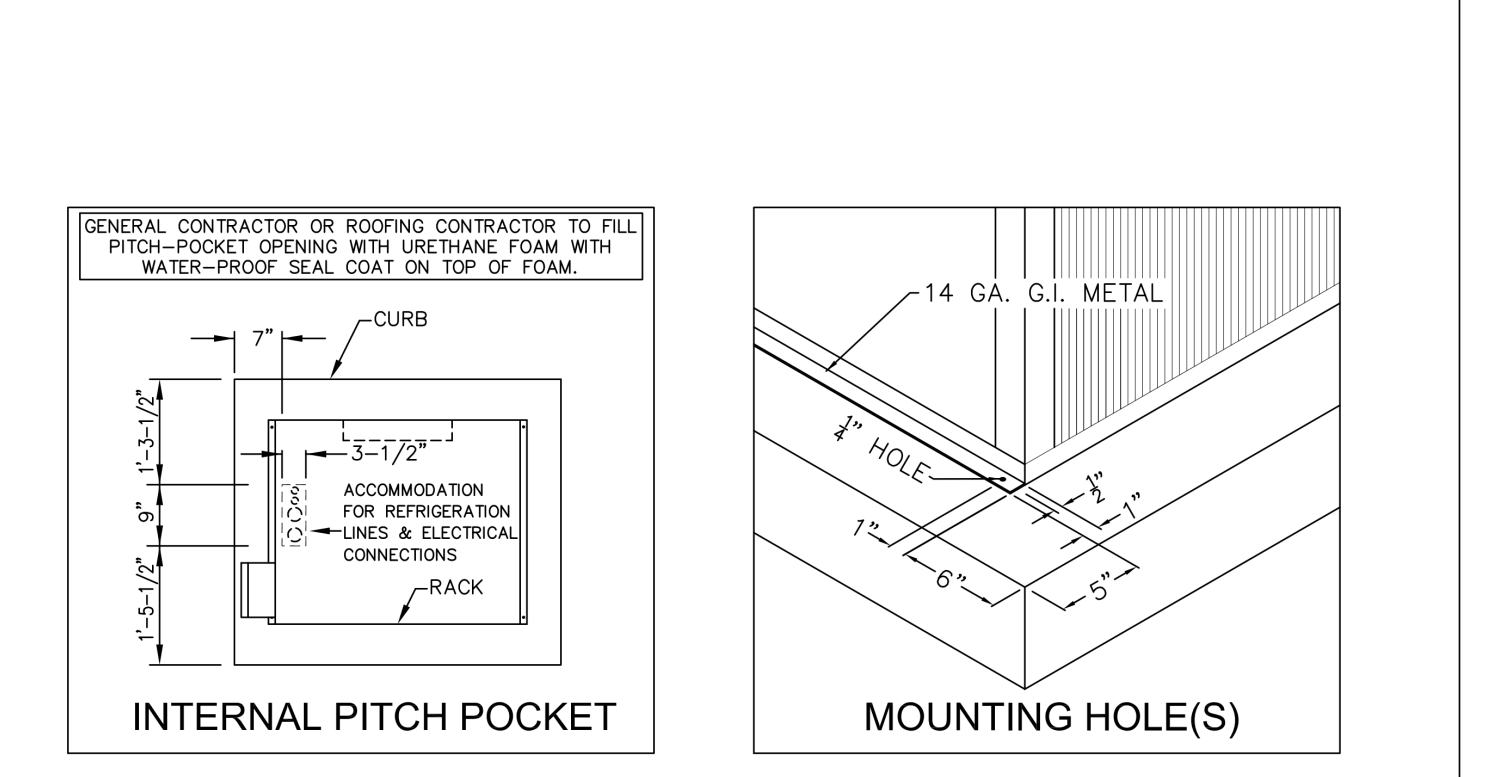
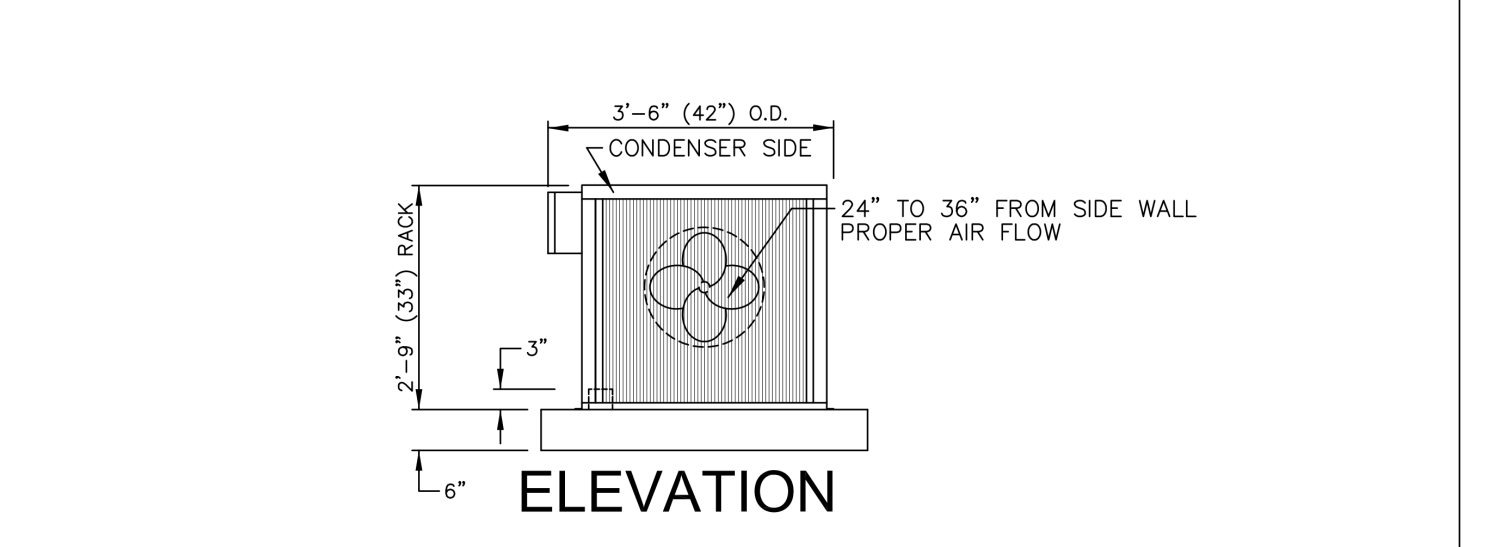
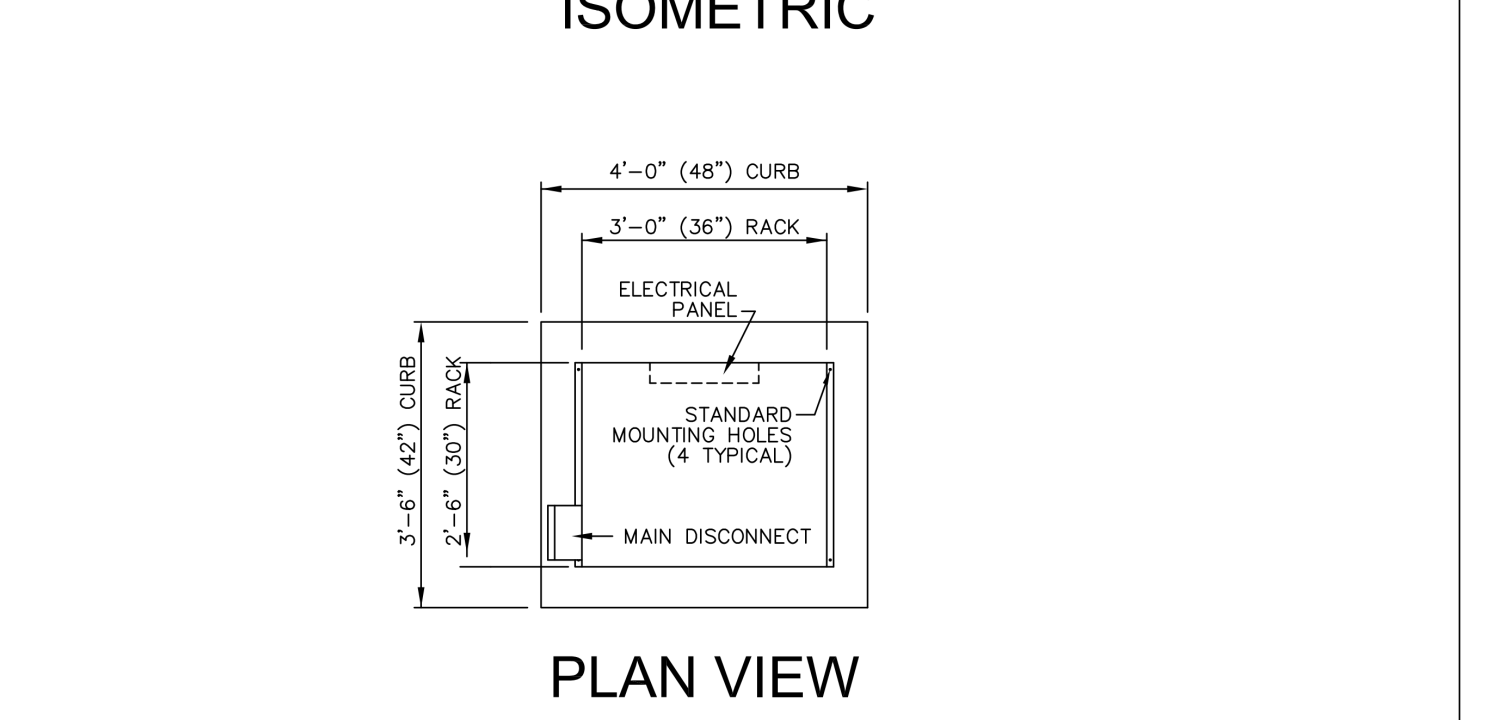
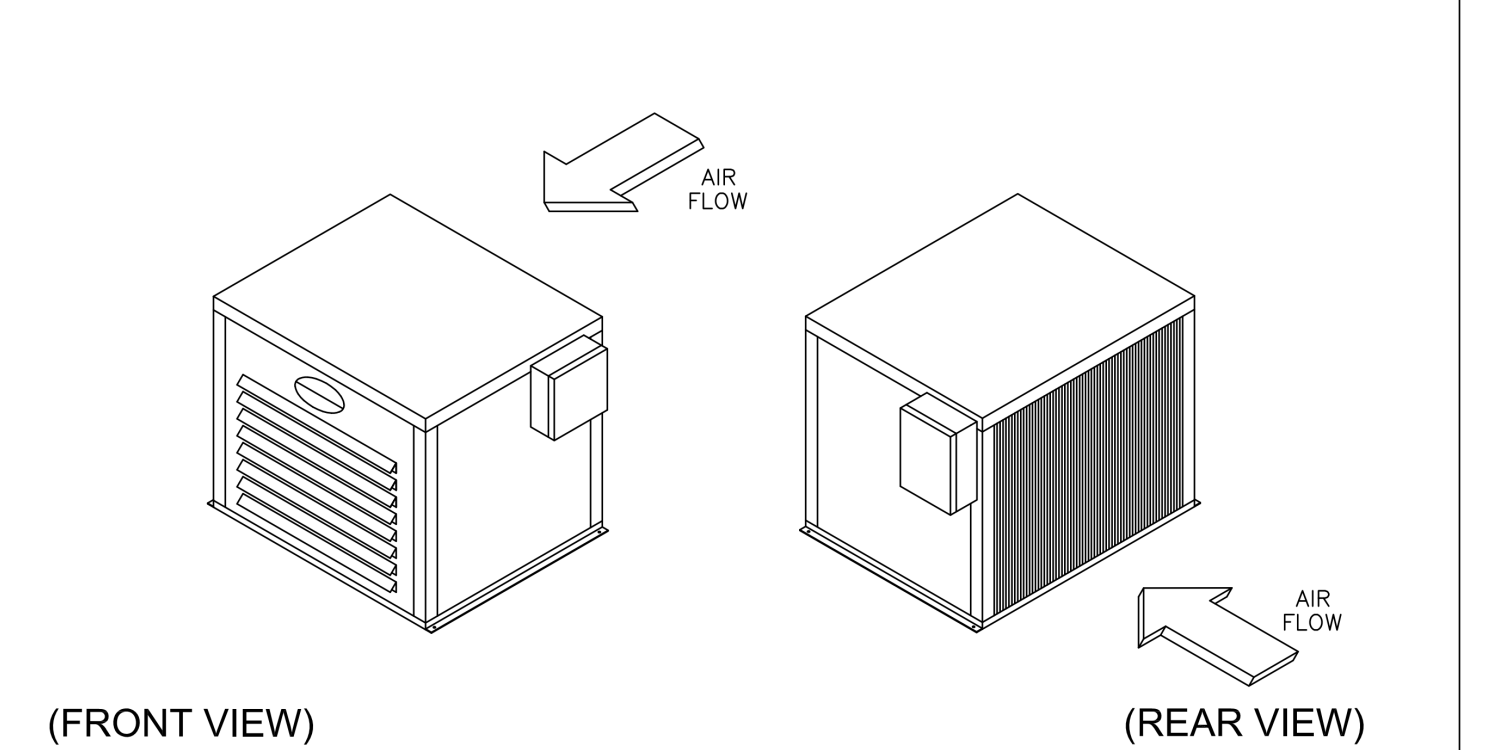
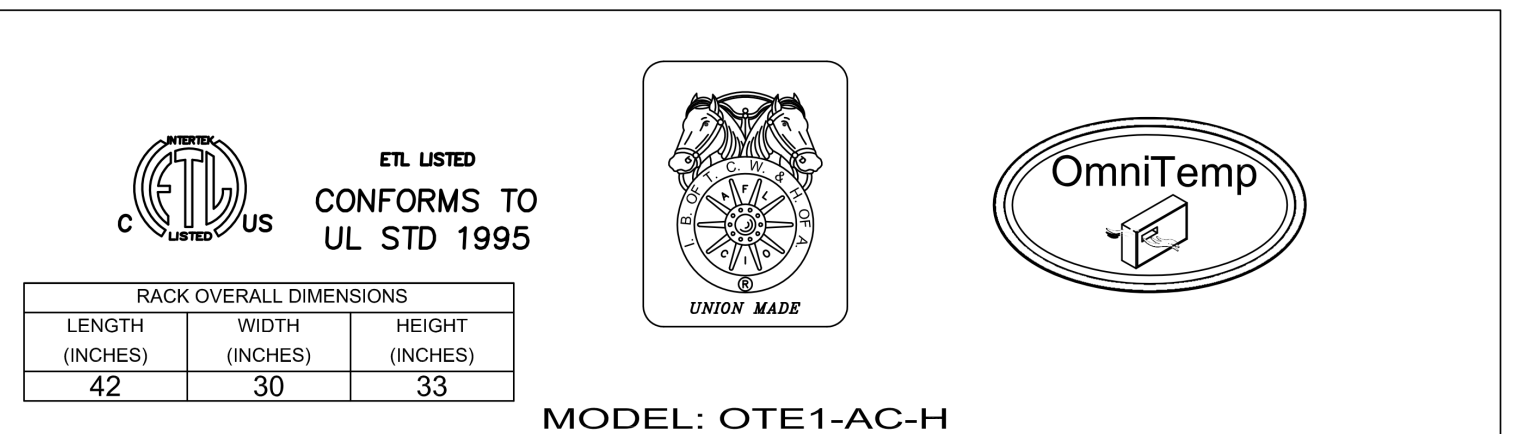
Although QF700-4 & QF700-5 drawings are referenced on the plan index page AF011, these two drawings are not included in the downloaded plans?

A: The two drawings are included with this addendum.

- Item 4 Q: Regarding Addendum 1: Item # 12, states that F31 is a spare number, not corner guards. The corner guards on plan sheet QF412-2 are labeled as item # C31. Should these be relabeled as item # F31?
A: QF412-2 should have item #F31 called out as corner guards. The overall total will remain the same.
- Item 5 Q: Item #A1, walk-in cooler on plan sheet QF411-1 is showing Keg Shelving in the cooler, but no item # for these are shown on the drawings and no specifications are provided. Will the keg shelving be provided by others?
A: Will be supplied by others.
- Item 6 Q: The Arctic Drawings shown on FSE Drawings QF701-6 and QF701-7 make reference to Walk-In coolers for item #'s J3 and K3. These Coolers are not shown on the Floor Plans, and are not specified in the FSE Specifications. Item #'s J3 and K3 are both listed as spare numbers in the specs and on the floor plan equipment schedules. Are we to provide these coolers?
A: Will be supplied by others.
- Item 7 Q: Please confirm that substitutions are not allowed per the mandatory pre-bid meeting?
A: Confirmed.
- Item 8 Q: #B37 counter calls for Decor Finish. Who is to provide this? The counter base will be in the foodservice bid. If the Decor Finish is to be in foodservice scope, please have architect send more details.
A: The Décor Finish to be provided by others, the bid item to include only the stainless steel countertops.

END OF ADDENDUM NO. TWO (2)

OMNI TEMP REFRIGERATION RACK



REMOTE REFRIGERATION EQUIPMENT SCHEDULE

Table with columns: Fixture Information, Compressor Information, Coil Information, Rack Features. Includes equipment details for Walk-In Cooler #D1.

Design Notes: 1) Refrigeration installer must have nitrogen flowing through all pipes during all brazing. 2) OmniTeam, Inc. will not pay for any damage in the solenoid(s) or expansion valve(s), caused by scale in the pipe.

EVAPORATOR COIL SPECIFICATIONS

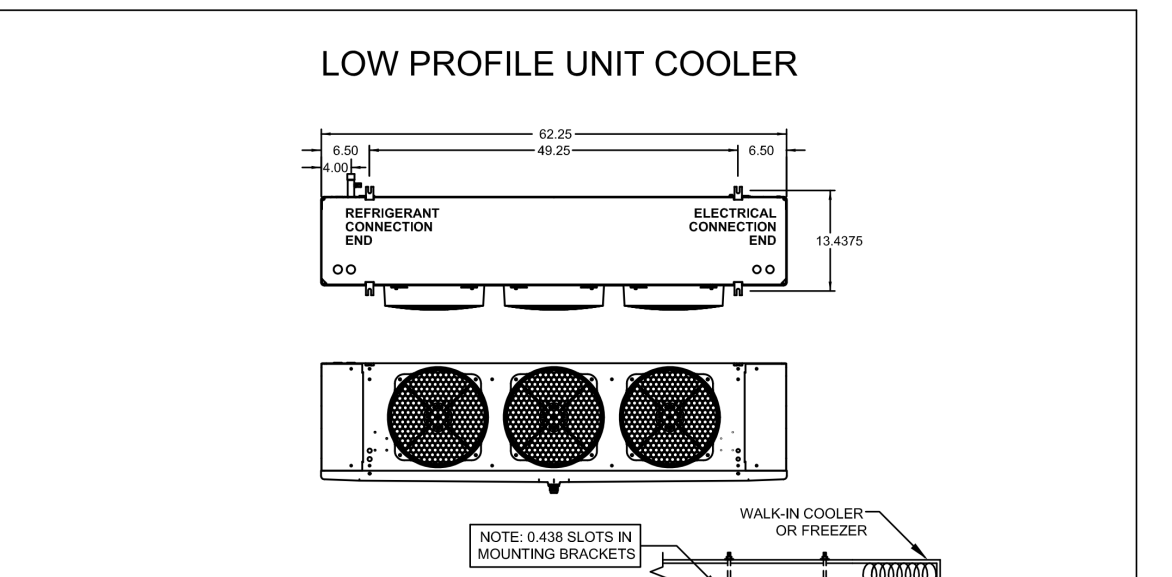
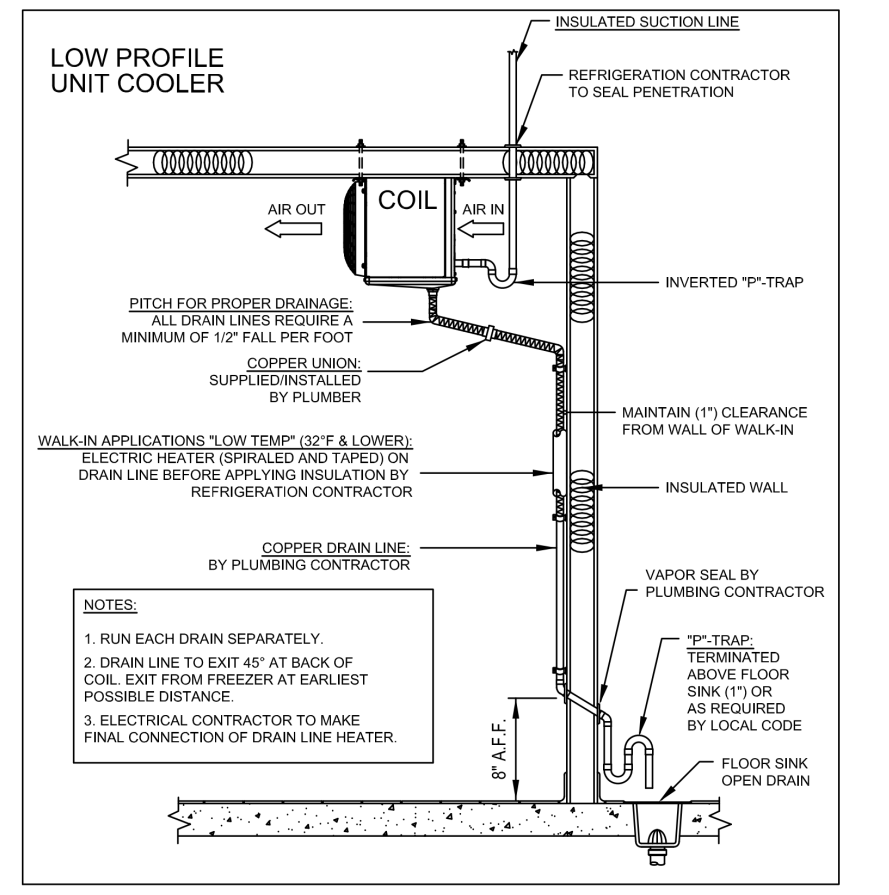


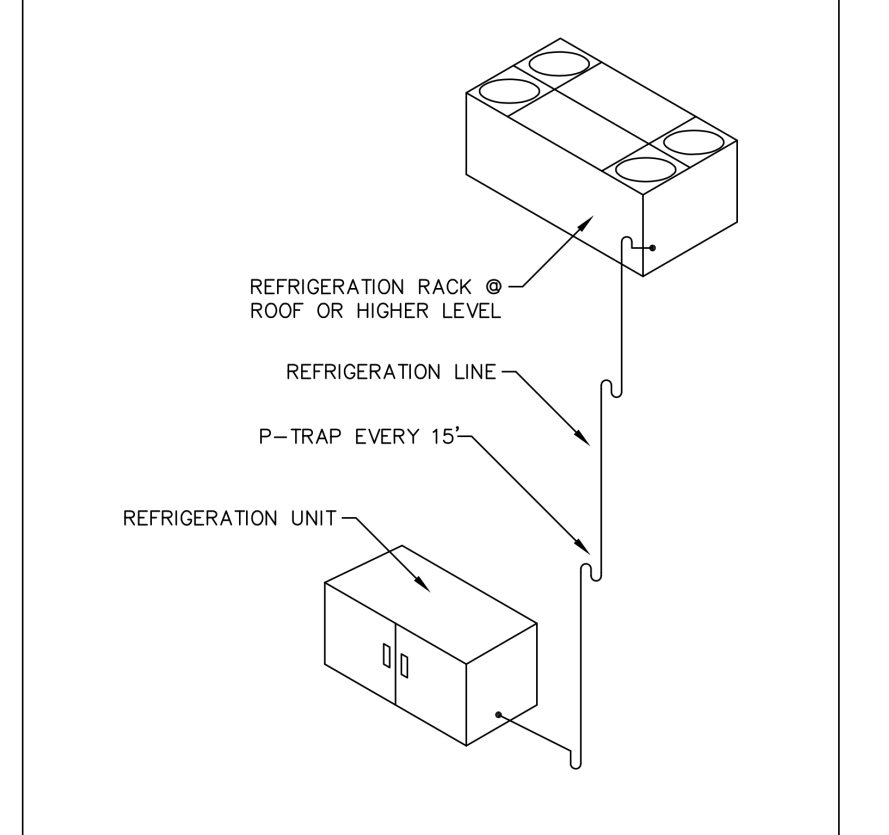
Table: DIMENSIONAL DATA LISTED IN INCHES. Lists dimensions for various parts of the evaporator coil.

Table: AIR DEFROST - (2) FANS. Lists fan specifications including model, medium, amp, and voltage.

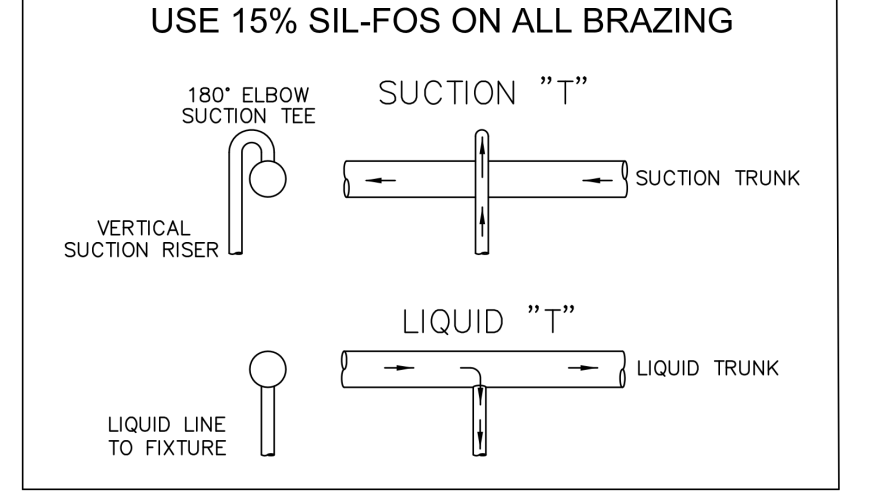
CONDENSATE DRAIN LINES



TYPICAL PIPING FOR VERTICAL RISERS



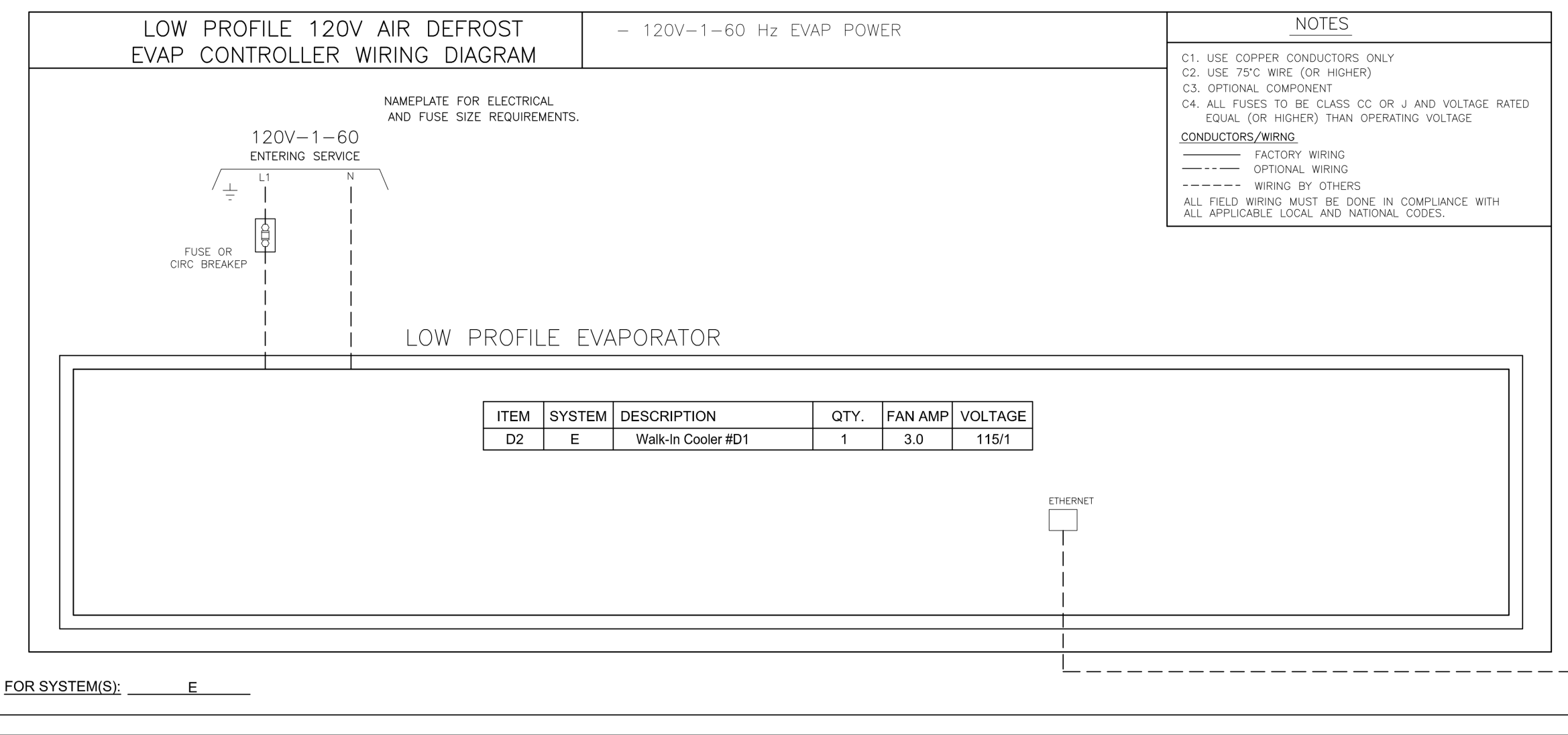
TYPICAL BRANCH PIPING FOR TEE'S



GENERAL NOTES

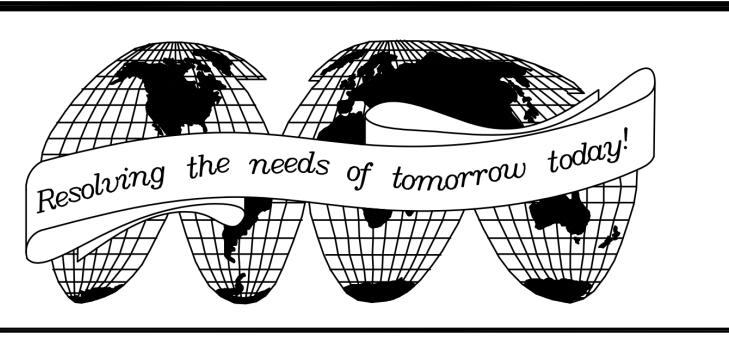
GENERAL: CONTRACTORS SHALL VERIFY ALL DIMENSIONS AND COORDINATE WITH OMNI TEMP REFRIGERATION. REFRIGERATION: ALL COILS SUPPLIED WITH EXPANSION VALVES, THERMOSTATS AND SOLENOID VALVES MOUNTED AND PIPED IN EACH COIL SUPPLY BY OMNI TEMP REFRIGERATION.

AIR DEFROST WIRING W/ ESP FOR WALK-IN COOLER



THIS PLAN IS PRIMARILY A GENERAL ARRANGEMENT OF EQUIPMENT FOR THE CONVENIENCE OF CONTRACTORS AND IS MADE FROM AVAILABLE INFORMATION.

Table with columns: NO., REVISION, DATE, BY, NO., REVISION, DATE, BY. Shows revision history for the drawing.




OmniTeam, Inc. Manufacturer of OmniTemp Refrigeration Products 9300 Hall Road, Downey, California 90241

OSU Reser Stadium (#D2.1) Corvallis, OR Refrigeration Plan

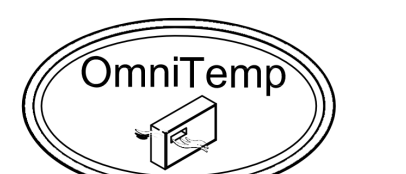
Table with columns: DATE, DESIGN #, SHEET NUMBER, SCALE, DESIGNED BY, DRAWN BY. Includes project metadata.

E D C B A

OMNI TEMP REFRIGERATION RACK

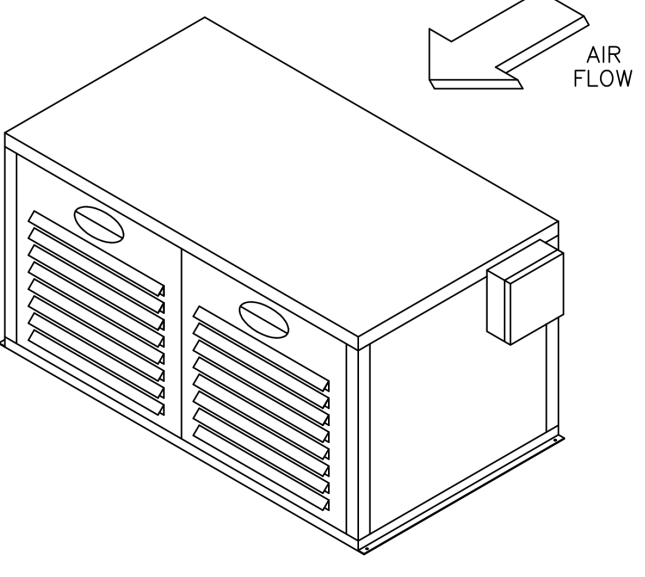


ETL LISTED
CONFORMS TO
UL STD 1995

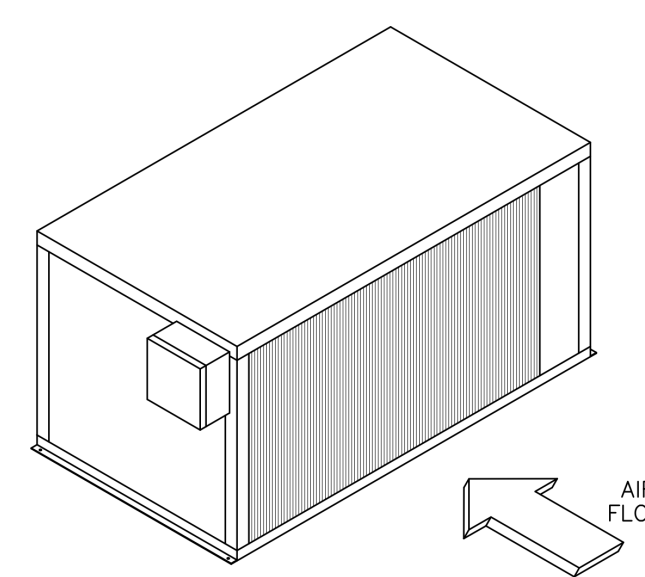


MODEL: OTB2-AC-H

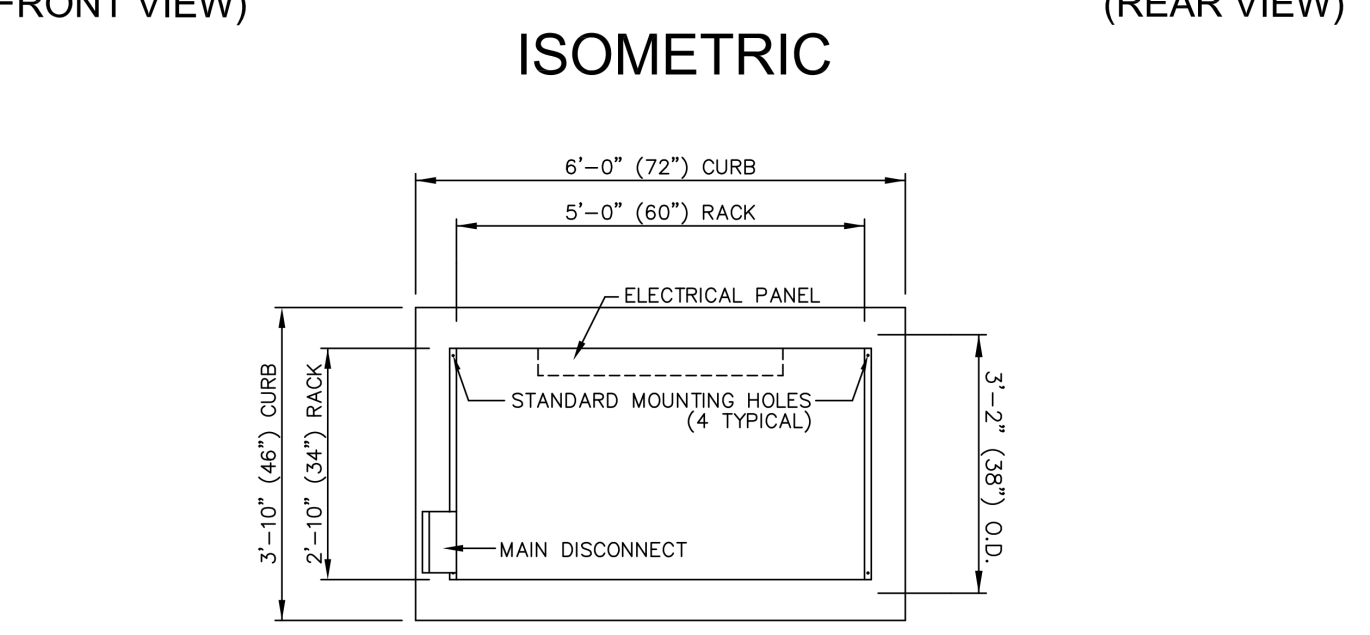
RACK OVERALL DIMENSIONS		
LENGTH (INCHES)	WIDTH (INCHES)	HEIGHT (INCHES)
66	38	33



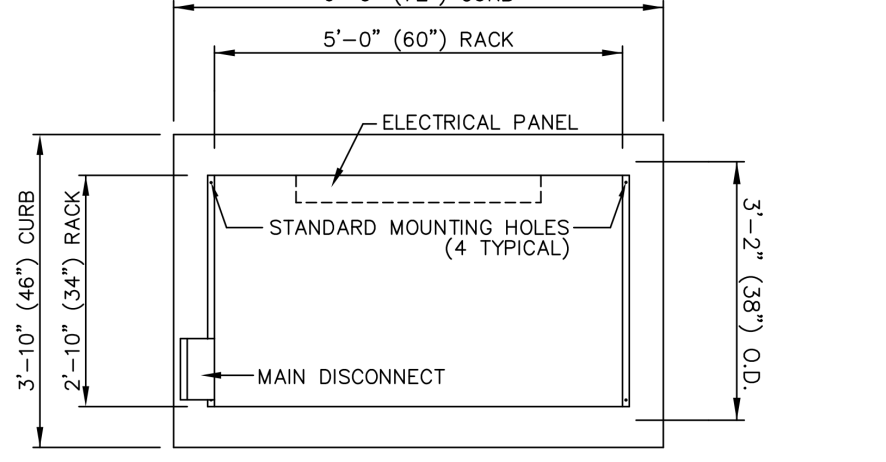
(FRONT VIEW)



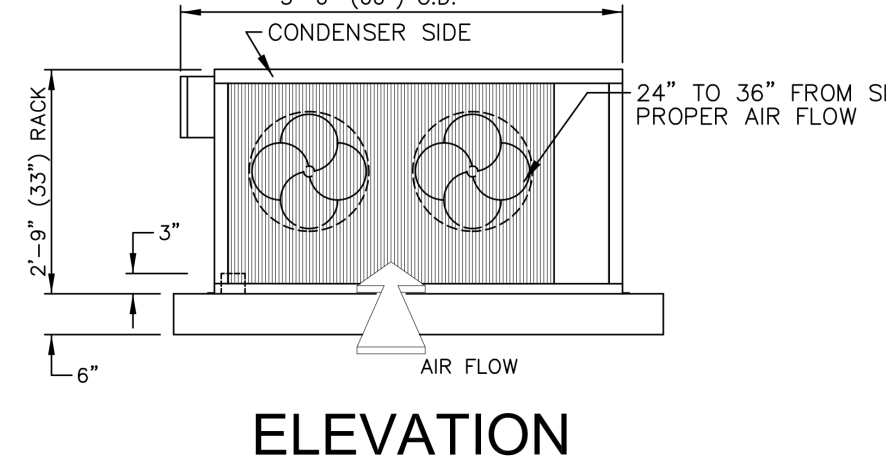
(REAR VIEW)



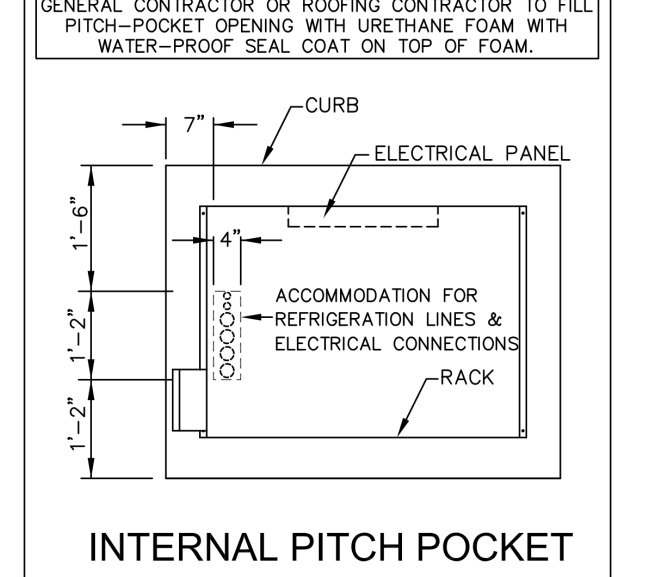
ISOMETRIC



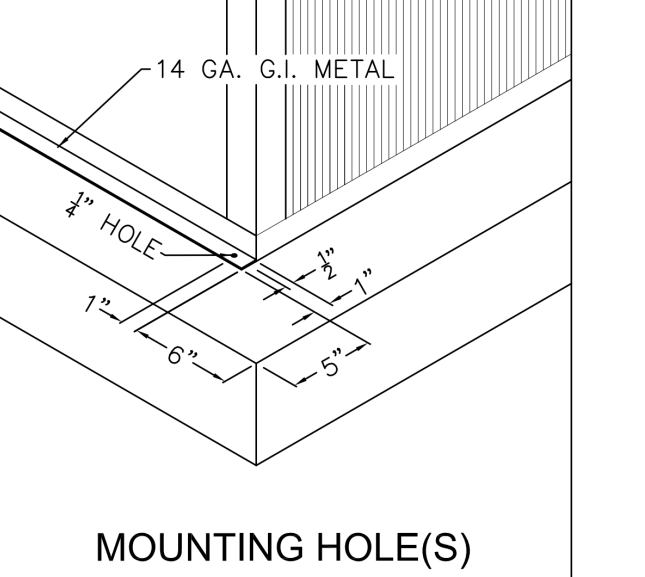
PLAN VIEW



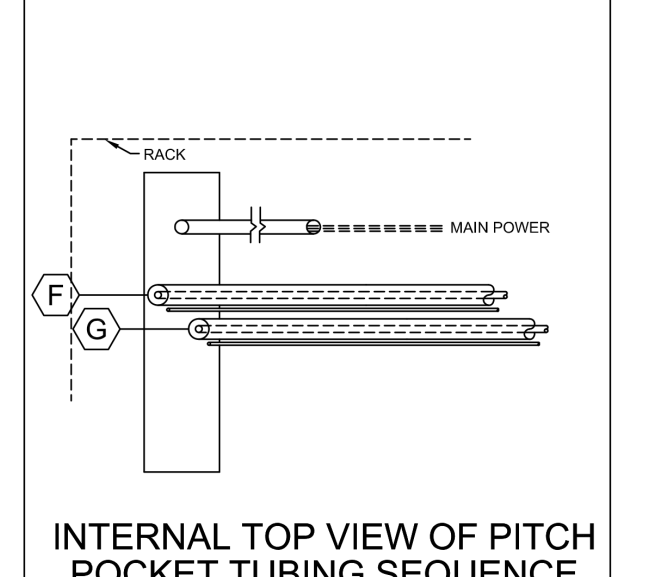
ELEVATION



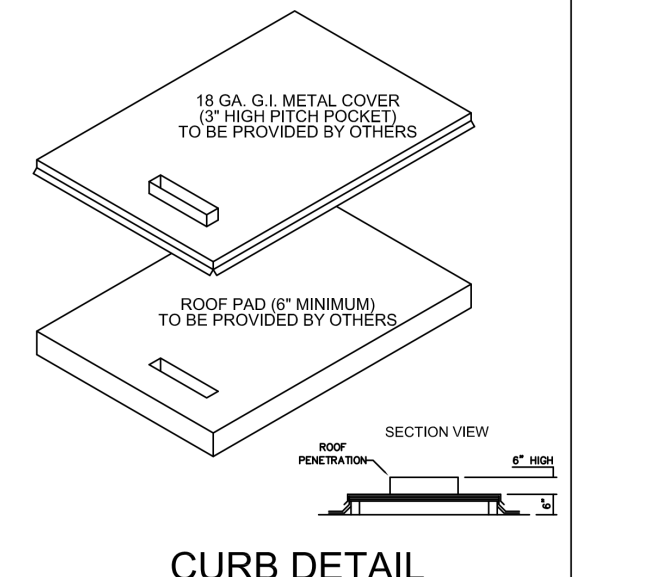
INTERNAL PITCH POCKET



MOUNTING HOLE(S)



INTERNAL TOP VIEW OF PITCH POCKET TUBING SEQUENCE



CURB DETAIL

REMOTE REFRIGERATION EQUIPMENT SCHEDULE

OmniTeam, Inc.
Refriation Products
9300 Hall Road
Downey, California 90241
(800) 423-9660 (Toll-Free)
(562) 862-7466 (Fax)

Project Name: OSU Reser Stadium
Rack Item Number: E32.1
Project Location: Corvallis, OR
Project Notes: Revised Area
Consultant Firm: Ricca Design Studios
Consultant: Tommy Wuyek
Consultant Representative: Factory

OmniTeam Model: OTB2-AC-H-2-0-3-4
Equipment: Multi-Compressor Rack
Condenser Type: Air-Cooled
Size of Rack Frame: 60" L x 34" W x 33" H
Weight of Rack: 795 Lbs.
Weight of Coils: 311 Lbs.
Power Supply: 460-480V/3PH/60Hz w/Step-Down Transformer
Connected Load: 15.3 Amps
Minimum Ampacity: 17.0 Amps
Max Overload Size: 30 Amps

Design #: D2101002 Date: 02/02/22
Designed By: A.J.

FIXTURE INFORMATION	COMPRESSOR INFORMATION				COIL INFORMATION														
	F	I	C	C	C	C	C	C											
E32 F Walk-In Freezer #E31	11.8	10.20	448a	ZF3KAE-TFD	4.00	6.4	49.5	460/3	13.1	D 1	KLP313VE-52D	1.8	1.8	208/1	11.9	11.9	208/1	X	SDSESP+
E42 G Walk-In Cooler #E41	29.9	35.25	448a	ZB30KCE-TFD	4.00	6.7	47.5	460/3	34.1	D 2	KLP317MA-51D	3.0	6.0	115/1				X	SDSESP+

RACK FEATURES		RACK FEATURES ELECTRICAL INFORMATION	
1-Condenser Fan Motor	EC motor	0.25	2.2
1-Condenser Fan Motor	EC motor	0.25	2.2

Rack Design Notes:

- A voltage variation of +/- 10% of nameplate utilization voltage is acceptable.
- Type of defrost for the systems are: "A" (off-cycle) air defrost, "D" demand defrost, "E" electric defrost.
- Each (compressor) system is supplied with a crankcase heater and head pressure controls factory installed.
- Low temperature (compressor) system(s) are supplied with suction line accumulator factory installed.
- All compressors and coated condensers are sized to operate at an air ambient of 105°F.
- All evaporator coils supplied by Omni with matching thermostat (Tstat), solenoid & expansion valves along with "EC" motors (W/Fs only) factory installed.
- Walk-in coil(s) supplied with "SmartSpeed" for low energy consumption (savings).
- Electrical contractor to provide power for medium and low temperature evaporator coils. Power from building. Provide separate power source for each evaporator.
- Walk-in(s) with "Electric Defrost" no longer requires inter-connecting wire to the rack, a direct 208-volt power source is needed.
- Ventilation of room. By Others, required to exhaust 67550 CFM/hour.
- Refrigeration design is based on a maximum line run of 150' for (each system) liquid and suction lines. This includes a vertical allowance of 35'.
- The information disclosed herein was originated by and is the property of OmniTeam Inc. and except for rights expressly granted to the customer, OmniTeam Inc. reserves all patent, property, design, use, sale, manufacturing and reproduction rights thereto.

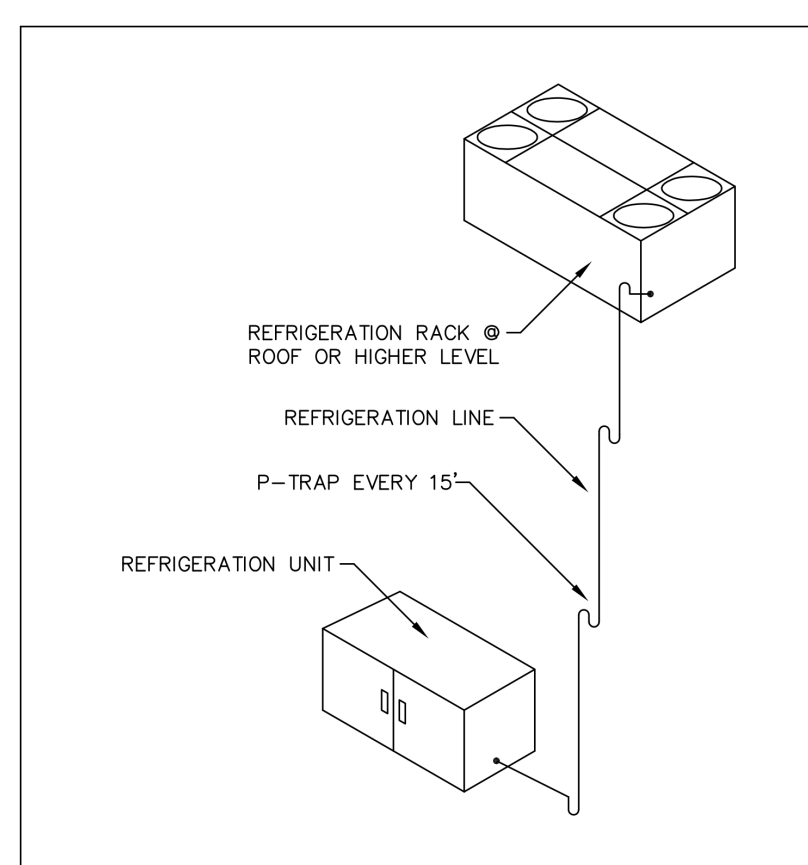
Kitchen Equipment Contractor (or his Refrigeration Contractor) Notes:

- It is the installing contractor's responsibility to follow all applicable codes & current refrigeration industry standards and practices when determining line sizes, installation and start-up of OmniTeam equipment.

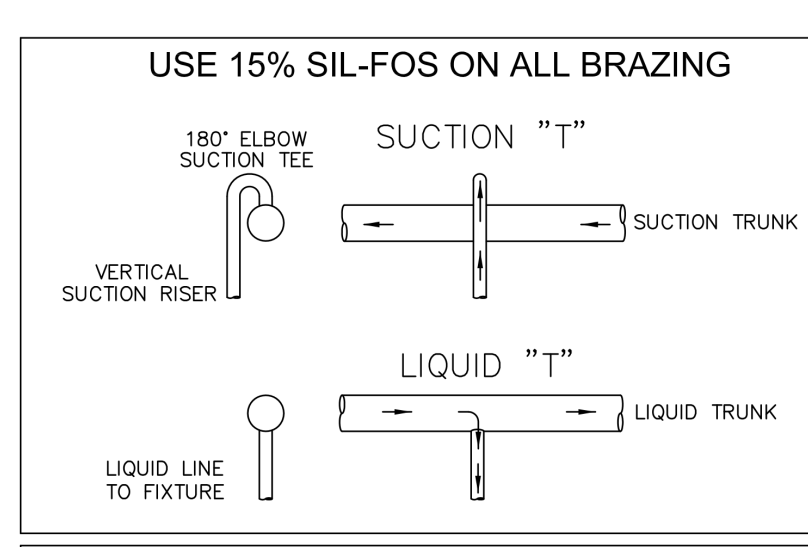
WARNING NOTICE:

- Refrigeration installer must have nitrogen flowing through all pipes during all brazing.
- OmniTeam, Inc. will not pay for any damage in the solenoid(s) or expansion valve(s), caused by scale in the pipe.

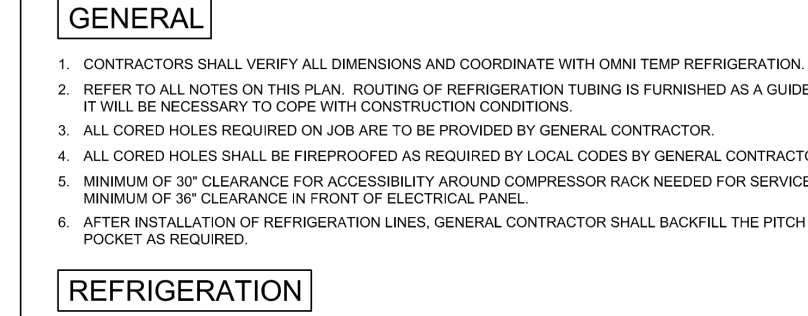
TYPICAL PIPING FOR VERTICAL RISERS



TYPICAL BRANCH PIPING FOR TEES



USE 15% SIL-FOS ON ALL BRAZING

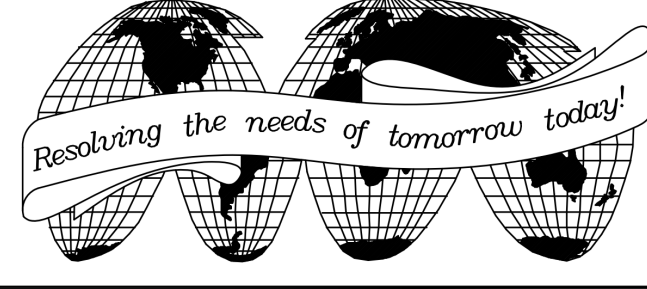


GENERAL NOTES

- GENERAL**
- CONTRACTORS SHALL VERIFY ALL DIMENSIONS AND COORDINATE WITH OMNI TEMP REFRIGERATION.
 - REFER TO ALL NOTES ON THIS PLAN. ROUTING OF REFRIGERATION TUBING IS FURNISHED AS A GUIDE. IT WILL BE NECESSARY TO COORDINATE WITH CONSTRUCTION CONDITIONS.
 - ALL CORDED HOLES REQUIRED ON JOB ARE TO BE PROVIDED BY GENERAL CONTRACTOR.
 - ALL CORDED HOLES SHALL BE REFRIGERATED AS REQUIRED BY LOCAL CODES BY GENERAL CONTRACTOR. MINIMUM OF 3" CLEARANCE FOR ACCESSIBILITY AND NO COMPRESSOR RACK NEEDED FOR CONTRACTOR.
 - AFTER INSTALLATION OF REFRIGERATION LINES, GENERAL CONTRACTOR SHALL BACKFILL THE PITCH POCKET AS REQUIRED.
- REFRIGERATION**
- NOTE: ALL COILS SUPPLIED WITH EXPANSION VALVES, THERMOSTATS AND SOLENOID VALVES MOUNTED AND PRE-WIRED IN EACH COIL (SUPPLIED BY OMNI TEMP REFRIGERATION (UNLESS OTHERWISE NOTED ON PRINTS)).
- ALL COILS TO BE REFRIGERATED GRADE ACAP TYPE "1" (CLEANED & BLENDED). JOINTS FOR ALL MAIN COPPER TUBING SHALL BE WELDED (SEE DETAIL). SUCTION LINES TO BE INSULATED WITH 1" MINIMUM (2" MINIMUM) WALL INSULATION FOR COLLECTORS AND 1" MINIMUM (2" MINIMUM) WALL INSULATION FOR FREEZERS.
 - ALL SUCTION LINES WITH LEFT OR MORE VERTICAL RISE ARE TO BE TRAPPED FOR PROPER OIL RETURN FOR STEEL TO COPPER CONNECTIONS. USE SILVER SOLDER. FOR COPPER TO COPPER CONNECTIONS, USE 60/40 (SILVER SOLDER). NOT RECOMMENDED FOR REFRIGERATION.
 - AFTER ALL PIPING CONNECTIONS OF COMPRESSOR RACK AND EVAPORATOR COILS HAVE BEEN COMPLETED, PRESURE WITH NITROGEN TO 150 PSI FOR A MINIMUM OF 15 MINUTES FOR FINAL PRESSURE TEST.
 - ALL 1/2" O.D. PIPING SHALL BE PRESSURE TESTED WITH NITROGEN AT 100 PSI FOR 10 MIN AND HOLD FOR 10 MINUTES. PRESURE WITH NITROGEN TO 150 PSI FOR A MINIMUM OF 15 MINUTES FOR FINAL PRESSURE TEST.
 - ALL COMPLETED REFRIGERATION SYSTEMS MUST BE EVACUATED TO 100 MICRONS OR LESS WITH VACUUM PUMP.
 - FURNISH AND INSTALL A WATT PER VFT, 200V HEATER TAPE ON WALK-IN FREEZER DRUMS.
 - ALL COILS SUPPLIED BY OTHERS MUST HAVE EXPANSION VALVES COMPATIBLE WITH THE REFRIGERANT USED ON EACH SYSTEM.
 - ALL FIELD PIPING RESPONSIBLE TO USE TO HAVE PLASTIC BUSHINGS BETWEEN CLAMPS AND PIPING, NO COPPER TO STEEL CONTACT PERMITTED.
 - OWNER NOT RESPONSIBLE FOR FIELD WIRING.
- SAFETY CAUTION:** EACH SYSTEM AND EVAPORATOR IS SHIPPED UNDER NITROGEN PRESSURE. USE CAUTION AND EXERCISE SAFETY AT ALL TIMES WHEN CUTTING LINES ON EVAPORATORS AND REFRIGERATION COILS.
- ELECTRICAL**
- ELECTRICAL CONTRACTOR (DIVISION 16) IS TO PROVIDE POWER FOR REFRIGERATION RACK AND ALL COILS. ELECTRICAL CONNECTION REQUIRED FOR RACK CONTROL PANEL, REFRIGERATION SYSTEMS AS PER THE WIRING DIAGRAM.
 - ELECTRICAL CONTRACTOR (DIVISION 16) TO PROVIDE THREE COLORED SERVICE FROM THE THERMOSTATS AT THE REFRIGERATION PACKAGE TO BLOWER COILS IN THE FIXTURE FOR AUTOMATIC DEFROST. UNLESS THE BLOWER INDICATES OTHERWISE.
 - ALL ELECTRICAL WIRES AND INSTALLATIONS SHALL BE IN ACCORDANCE WITH THE WIRING DIAGRAM AND LOCAL CODES.
 - ELECTRICAL CONTRACTOR (DIVISION 16) TO PROVIDE ANY DISCONNECT SWITCHES NEEDED BY LOCAL CODES.
 - POW VOLT TESTS, THERMOCYCLE AND INSULATION TO BE DONE BY FIELD ELECTRICIAN.
 - FIELD ELECTRICIAN TO CONNECT COPPER ELECTRICAL LINES TO RACK SYSTEM.
- PLUMBING**
- PLUMBING CONTRACTOR (DIVISION 16) TO PROVIDE 1/2" O.D. COPPER CONDENSATE DRAIN LINES FROM WALK-IN FREEZER AND REFRIGERATION. PIPING TO BE MINIMUM OF 1/2" DIA. COPPER CONDENSATE DRAIN LINES TO BE TRAPPED OUTSIDE OF BOX TO AVOID ENTRAPMENT OF AIR. PROVIDE INDIVIDUAL DRAIN LINES PER REFRIGERATION PACKAGE, UNLESS OTHERWISE INDICATED.
 - PLUMBING CONTRACTOR (DIVISION 16) TO VERIFY THE METHOD USED AND LOCATION FOR FUTURE DRAINING WHEN REQUIRED. INSTALLATION OF DRAIN LINE SHALL BE DONE BEFORE THE WALL IS CLOSED OFF.

THIS PLAN IS PRIMARILY A GENERAL ARRANGEMENT OF EQUIPMENT FOR THE CONVENIENCE OF CONTRACTORS AND IS MADE FROM AVAILABLE INFORMATION. BUT MEASUREMENTS ARE TO BE VERIFIED ON THE JOB. PLUMBING, ELECTRICAL, REFRIGERATION, AND VENT OUTLETS HAVE BEEN LOCATED AS ACCURATELY AS POSSIBLE AND ARE INTENDED TO SUIT EQUIPMENT TO BE SUPPLIED. WE ACCEPT NO RESPONSIBILITY FOR WORK DONE BY SAID CONTRACTORS AND WILL NOT STAND ANY EXPENSE FOR CHANGES MADE NECESSARY BY LOCAL BUILDING CODES, ORDINANCES, STRUCTURAL CONDITIONS, OR BY THE SUBSTITUTION OR CHANGES IN EQUIPMENT SHOWN ON THIS PLAN. THIS DRAWING IS THE PROPERTY OF OMNITEAM INCORPORATED. IT IS NOT TO BE REPRODUCED OR DISTRIBUTED, EITHER IN WHOLE OR IN PART.

NO.	REVISION	DATE	BY	NO.	REVISION	DATE	BY
1	Initial Design #02101002	02/03/22	CG				



Resolving the needs of tomorrow today!

OmniTeam, Inc.
Manufacturer of OmniTemp Refrigeration Products
9300 Hall Road, Downey, California 90241
(800) 423-9660 (Toll-Free) - (562) 862-7466 (Fax)
Web page address: www.omniteaminc.com
E-Mail: CathyB@omniteaminc.com

OSU Reser Stadium (#E32.1)

Corvallis, OR

Refrigeration Plan

DATE: 02/02/22	DESIGN #: D2101002	SHEET NUMBER: R1
SCALE: None	DESIGNED BY: A.J.	Of 2
DRAWN BY: Cathy Godinez		

E
D
C
B
A