

**LASELLS STEWART CENTER MECHANICAL & ROOF
RENEWAL**

EXHIBIT I – Alternate Narrative and Alternate Drawings



Oregon State
University

**Construction Contracts Administration
Oregon State University
644 SW 13th Ave.
Corvallis, Oregon 97333**

ALTERNATES NARRATIVE

1.01 GENERAL

- A. Narrative generally describes changes to Specifications and Drawings related to the Alternate Scope of Work.
- B. Clarifying notes on "Changes to Specifications" terminology, applies:
 - 1. INSERT means to change or add paragraphs that will result in renumbering subsequent paragraphs.
 - 2. REVISE means to change paragraphs that will not result in renumbering subsequent paragraphs.
 - 3. ADD means to add new paragraphs with new numbers, to add new sections to replace sections that have been deleted, or to add new sections to the specifications.
 - 4. DELETE means to eliminate from the specifications.

1.02 DIVISION 01 GENERAL REQUIREMENTS

- A. General: Specification Sections referenced below are dated February 21, 2022:
- B. Section 012300 – ALTERNATE.
 - 1. Add Section 012300 – Alternates. Section describes process for Alternates and includes List of Alternates.
 - a. List of Alternates. Provides description of work for each Alternate.

1.03 DIVISIONS 02 - 49 SPECIFICATION SECTIONS

- A. General: Specification Sections referenced below are dated February 21, 2022:
- B. Section 233113 – Air Distribution.
 - 1. Alternates 3A, 3B, 3C and 3D. See Sheet A8.11A for Work Areas A, B, C and D.
 - 2. In Work Areas not selected by Owner for remove and replace, then existing diffusers and grilles shall remain.
 - 3. Section 233113 – Air Distribution, Subsection 2.06 Diffusers, Grilles and Registers applicable to replacement work within designated Work Areas.
- C. Section 265119 - LED Interior Lighting.
 - 1. Alternates 3A, 3B, 3C and 3D. See Sheet A8.11A for Work Areas A, B, C and D.
 - 2. In Work Areas not selected by Owner for remove and replace, then existing interior lighting shall remain.
 - 3. Delete Section 265119 – LED Interior Lighting. Where existing ceilings remain and are not replaced.

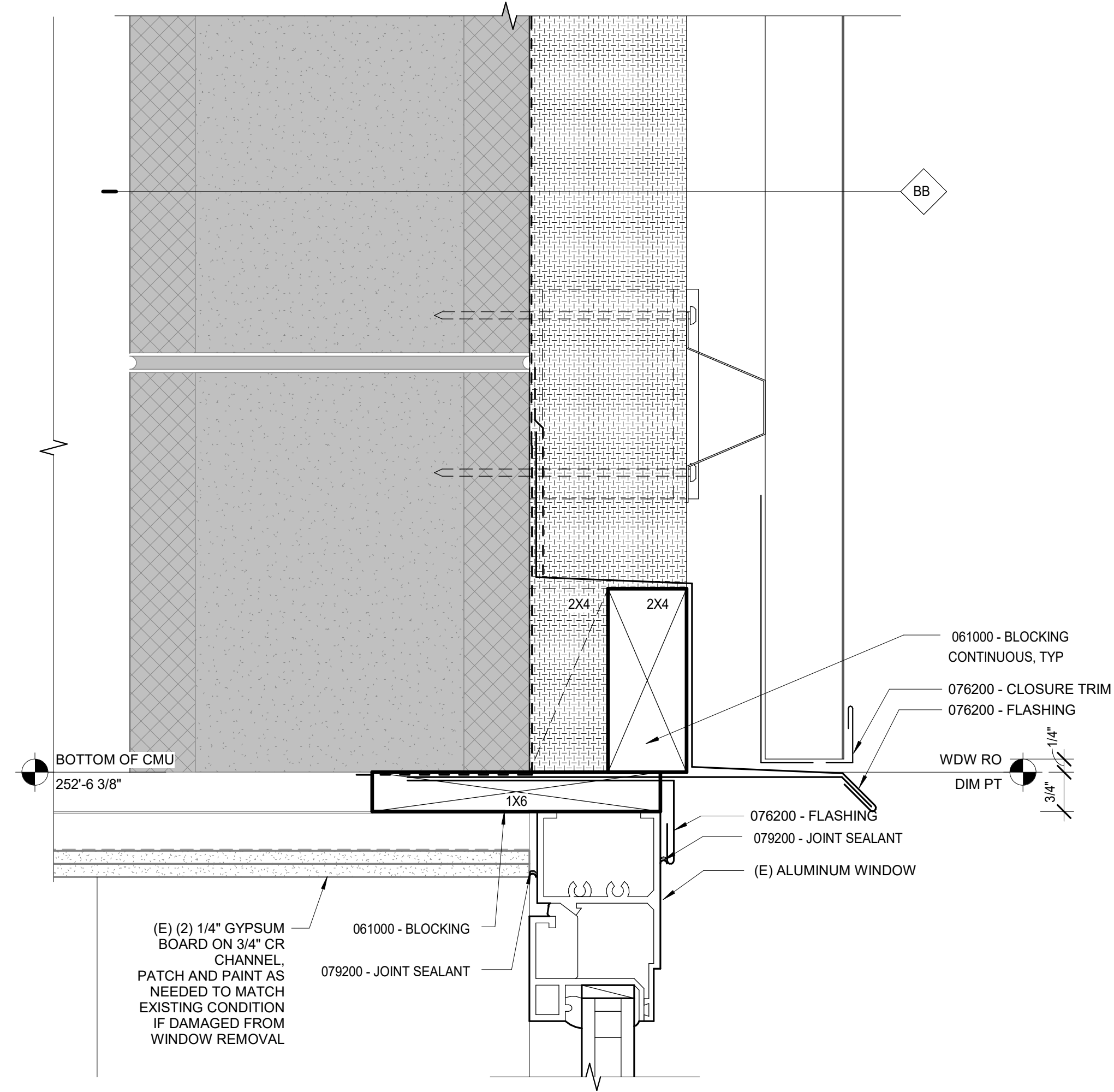
1.04 DRAWING SHEETS

- A. General: Drawing Sheets referenced below are dated February 21, 2022:
- B. Sheet A5.21A – Exterior Window Details replaces details 1 and 2/ sheet A5.21.
 - 1. Alternate 1: Removes and replace existing window in modified window opening.

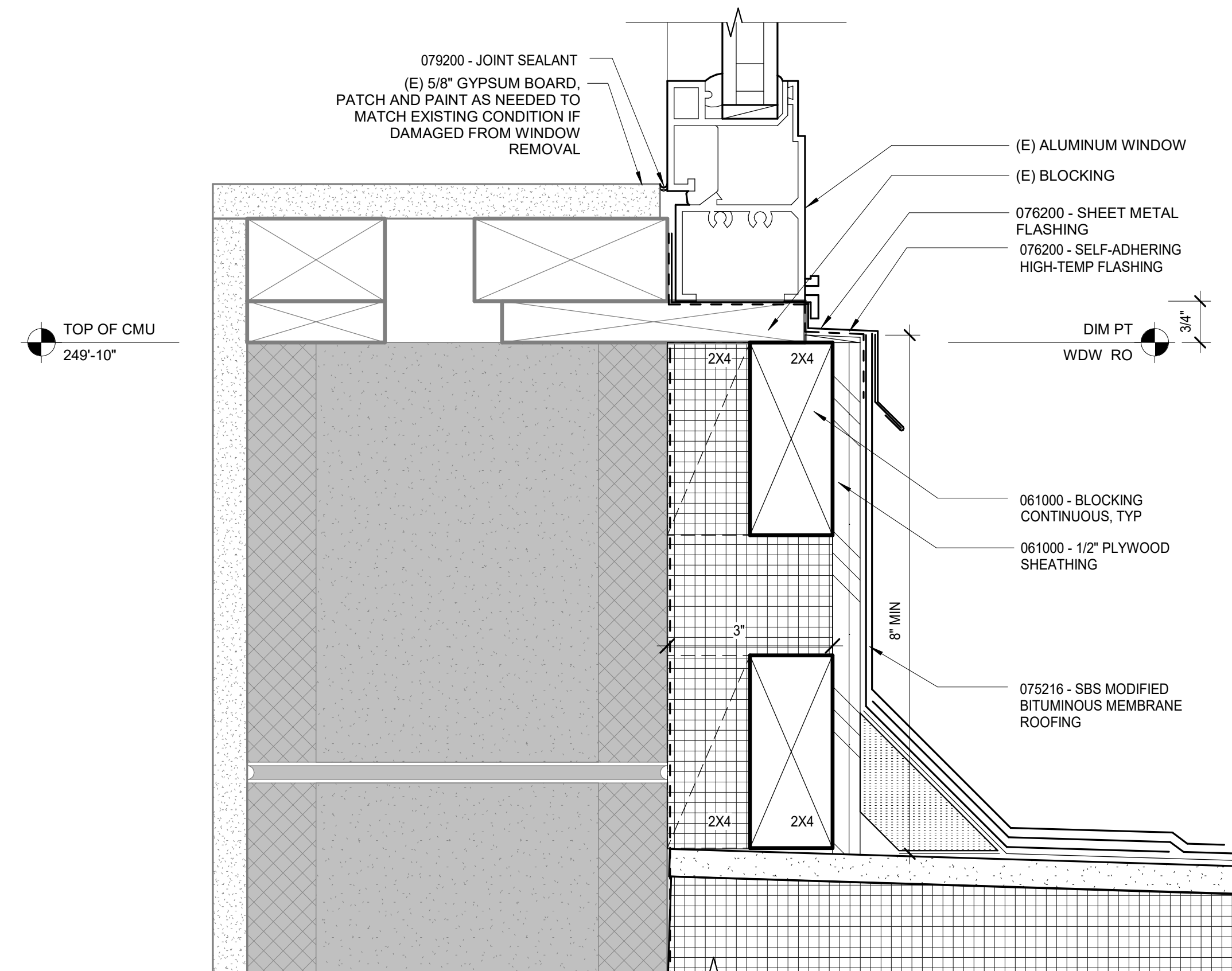
- C. Sheet A5.51A – Exterior Details:
1. Alternate 4: Detail 1/A5.51A replaces 1/A5.51 showing the increased height of parapet wall at Main roof.
 2. Alternate 5: Detail 3/ A5.51A replaces by Detail 2/A5.51 showing increased height of parapet wall at Electrical Room roof.
 3. Alternate 6: Details 2 and 4/ A5.51A replace Details 1 and 2 A5.52 showing increased height of parapet wall at Auditorium.
 4. Alternate 7: Detail 5/ A5.51A revises parapet height at Stairwell roof.
- D. Sheet A8.11A – Reflected Ceiling Plan – Lower Level.
1. Sheet A8.11A – Reflected Ceiling Plan- Lower Level – replaces:
 - a. Detail 1 Sheet AD8.11 – DEMO Reflected Ceiling Plan – Lower Level
 - b. Detail 1 Sheet A8.11 – Reflected Ceiling Plan – Lower level.
 2. Alternate 3: Sheet A8.11A indicates limited access areas for remove and replace of equipment above ceilings.
 3. Alternates 3A, 3B, 3C and 3D: Sheet A8.11A indicates Work Areas A, B, C and D.
 - a. Sheet A8.11A provides plan of existing ceiling system including, but not limited to lighting, diffusers, and grilles, attached equipment and other systems to remain.
- E. Sheet M0.01 – Schedules
1. Alternate 3 – Limited Demolition.
 2. Alternates 3A, 3B, 3C and 3D: See Sheet A8.11A for Work Areas A, B, C and D.
 3. M0.01 Diffuser and Grille Schedule. Remove and replace existing diffusers and grilles within Owner designated Work Areas. In other areas existing diffusers and grilles to remain.
- F. Sheet MD1.01 – Demo - Main Level Plan – HVAC
1. Alternate 3 – Limited Demolition.
 - a. MD1.01 General Notes. D. Revise note to read “Cap and remove hydronic pipe within 5 feet of VAV terminal units. Beyond 5 feet of VAV terminal unit, abandon hydronic pipe in place except as noted otherwise for Boiler B-1, Boiler B-2, and other roof top equipment.”
 2. Alternates 3A, 3B, 3C and 3D: See Sheet A8.11A for Work Areas A, B, C and D.
 - a. Detail 1/MD1.01. Remove and replace existing diffusers and grilles within Owner designated Work Areas. In other areas existing diffusers and grilles to remain.
- G. Sheet M2.01 –Main Level Plan – HVAC
1. Alternate 3 – Limited Demolition.
 - a. M2.01 General Notes. C. Revise note to read “Cap and remove hydronic pipe within 5 feet of VAV terminal units. Beyond 5 feet of VAV terminal unit, abandon hydronic pipe in place except as noted otherwise for Boiler B-1, Boiler B-2, and other roof top equipment.”
 2. Alternates 3A, 3B, 3C and 3D: See Sheet A8.11A for Work Areas A, B, C and D.

- a. M2.01 General Notes. E. Note applicable to Owner designated Work Areas where ceiling remove and replace with new work occurs. Where not designated, existing diffusers, and ducts to remain.
 - b. Detail 1/MD1.01. Remove and replace existing diffusers and grilles within Owner designated Work Areas. In other areas existing diffusers and grilles to remain.
- H. Sheet M9.01 – Mechanical Details
1. Alternates 3A, 3B, 3C and 3D: See Sheet A8.11A for Work Areas A, B, C and D.
 2. Detail 5/ A9.01 Ceiling Diffuser Mount – Rigid. Detail applicable to remove and replace existing diffusers and grilles within Owner designated Work Areas. In other areas existing diffusers and grilles to remain. See Sheet A8.11A for Work Areas A, B, C and D.
- I. Sheet E0.01 – Basis of Design and Calculation Tables
1. Alternates 3A, 3B, 3C and 3D: See Sheet A8.11A for Work Areas A, B, C and D.
 2. Sheet E0.01 Basis of Design Note 3 – Revise note to read, "Remove and replace existing interior lighting and controls within Owner designated Work Areas." In other areas existing interior lighting and controls to remain.
 3. Sheet E0.01 Basis of Design Note 3. Power A. Demolition – Revise note to read, "Remove and replace existing interior lighting and controls within Owner designated Work Areas." In other areas existing interior lighting and controls to remain.
- J. Sheet E0.03 – Luminaire Schedule and Controls BOD
1. Alternates 3A, 3B, 3C and 3D: See Sheet A8.11A for Work Areas A, B, C and D.
 2. Remove and replace existing interior lighting and controls within Owner designated Work Areas. In other areas existing interior lighting and controls to remain.
- K. Sheet E2.01 – Main Level Plan – Lighting
1. Alternates 3A, 3B, 3C and 3D: Sheet A8.11A for Work Areas A, B, C and D.
 2. Remove and replace existing interior lighting and controls within Owner designated Work Areas. In other areas existing interior lighting and controls to remain.
- 1.05 ATTACHMENTS
- A. This Alternate Set includes the following attachments:
1. Specification Sections, dated February 21, 2022:
 - a. Section 012300 – Alternates.
 - b. Section 012300 – List of Alternates.
 2. Drawing Sheets, dated February 21, 2022:
 - a. Sheet A5.21A – Exterior Window Details.
 - b. Sheet A5.51A – Exterior Details.
 - c. Sheet A8.11A – Reflected Ceiling Plan – Lower Level.

END OF ALTERNATES NARRATIVE



1 WINDOW HEAD AT AUDITORIUM - ALTERNATE NO. 1
6" = 1'-0"



2 WINDOW SILL AT AUDITORIUM - ALTERNATE NO. 1
6" = 1'-0"

#	REVISIONS	DATE

Oregon State University
LSC Mech & Roof Renewal

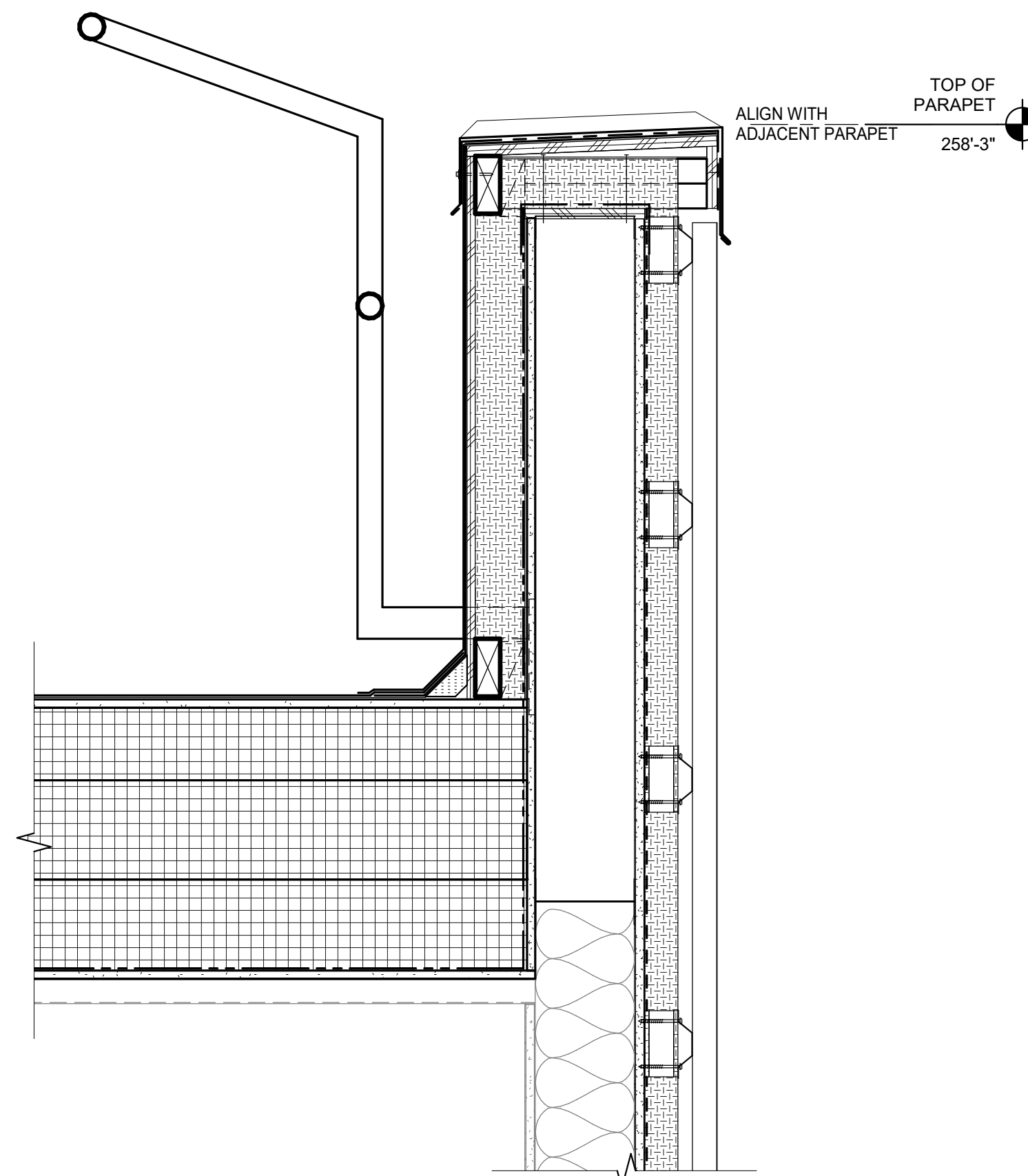
875 SW 26TH STREET
CORVALLIS, OR 97331
JOB NO: 2240-21
ISSUE DATE: 02/21/2021
Jurisdiction Stamp Area

EXTERIOR
WINDOW
DETAILS

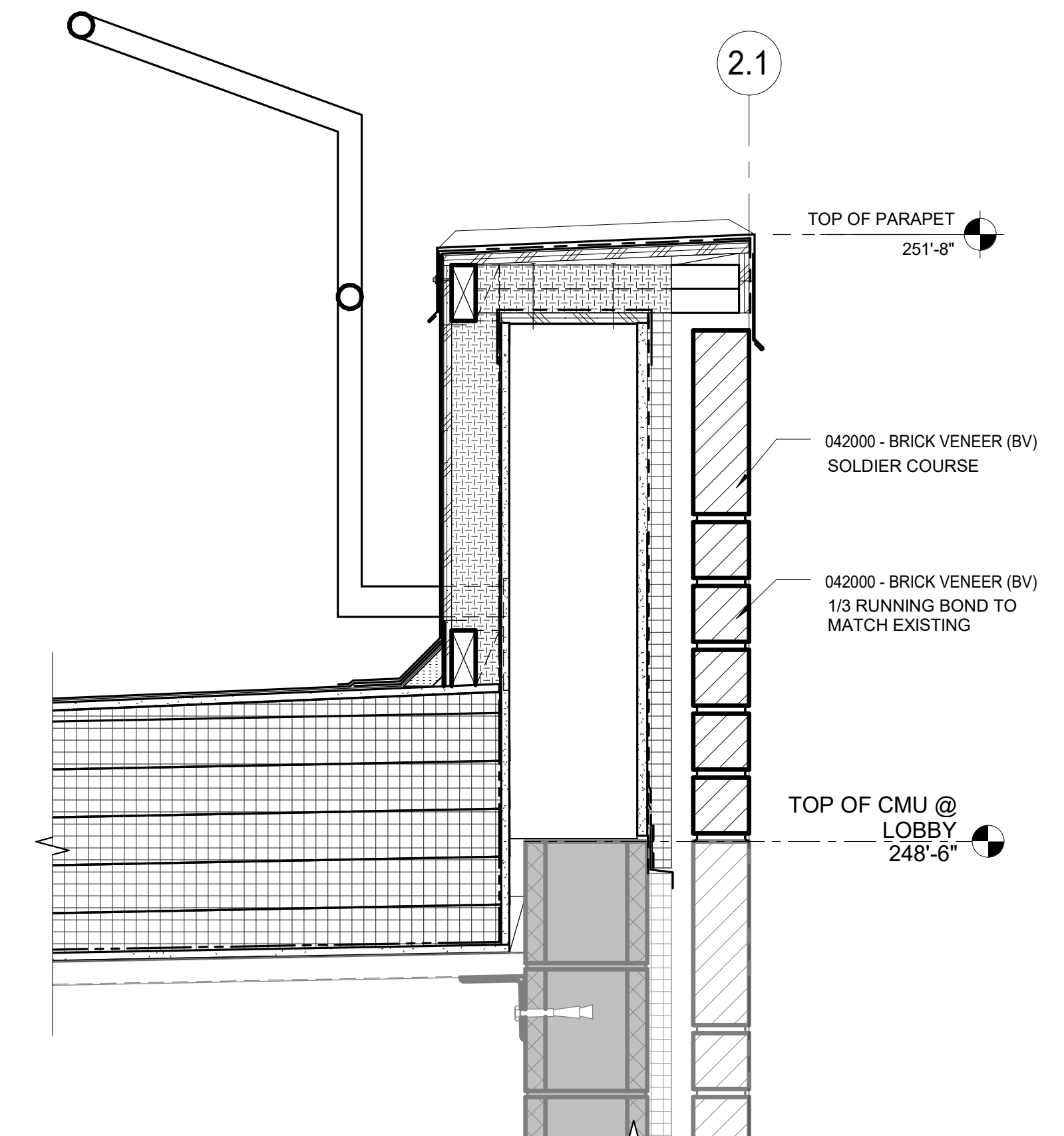
A5.21A

ALTERNATE SET

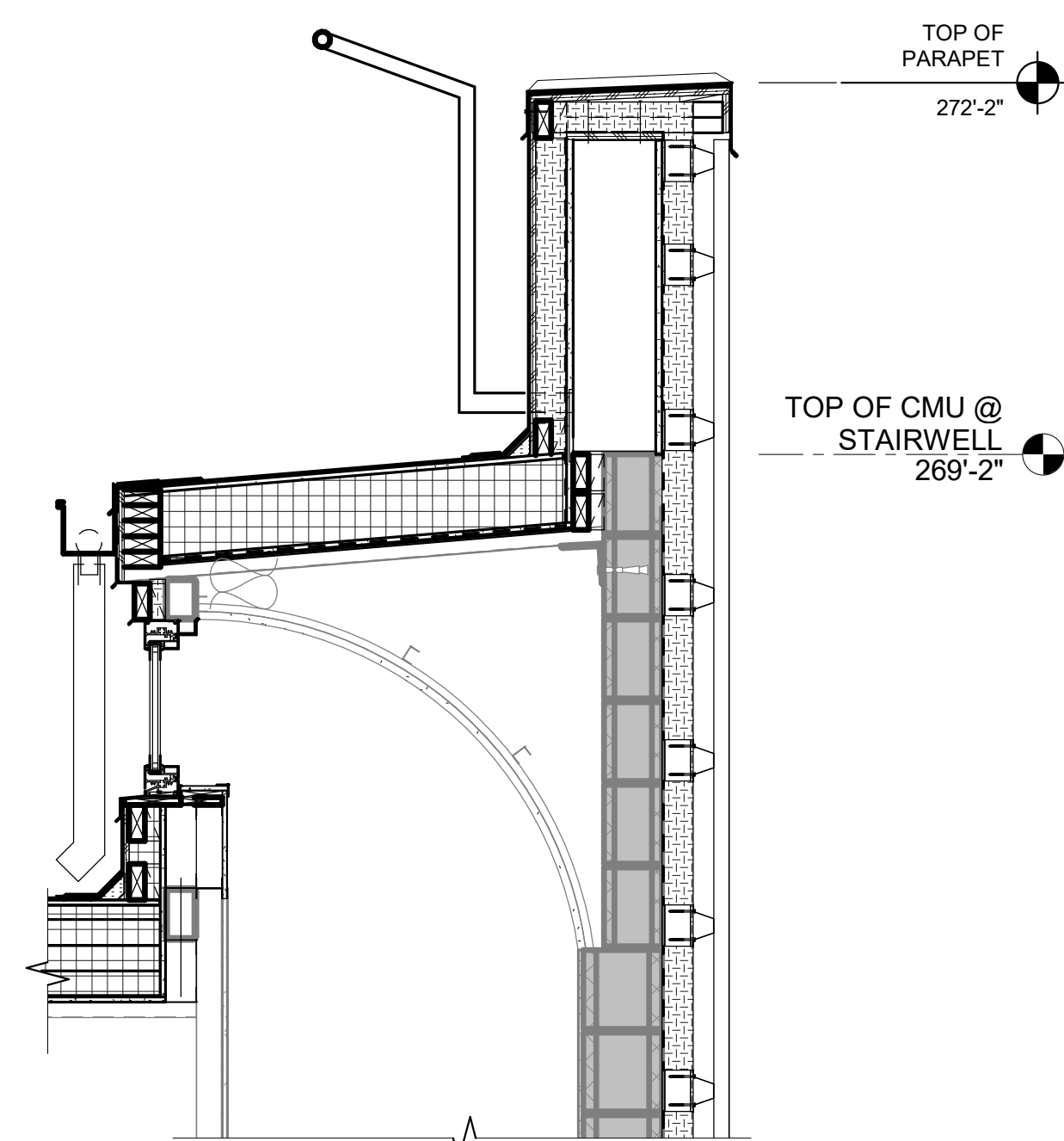
#	REVISIONS	DATE



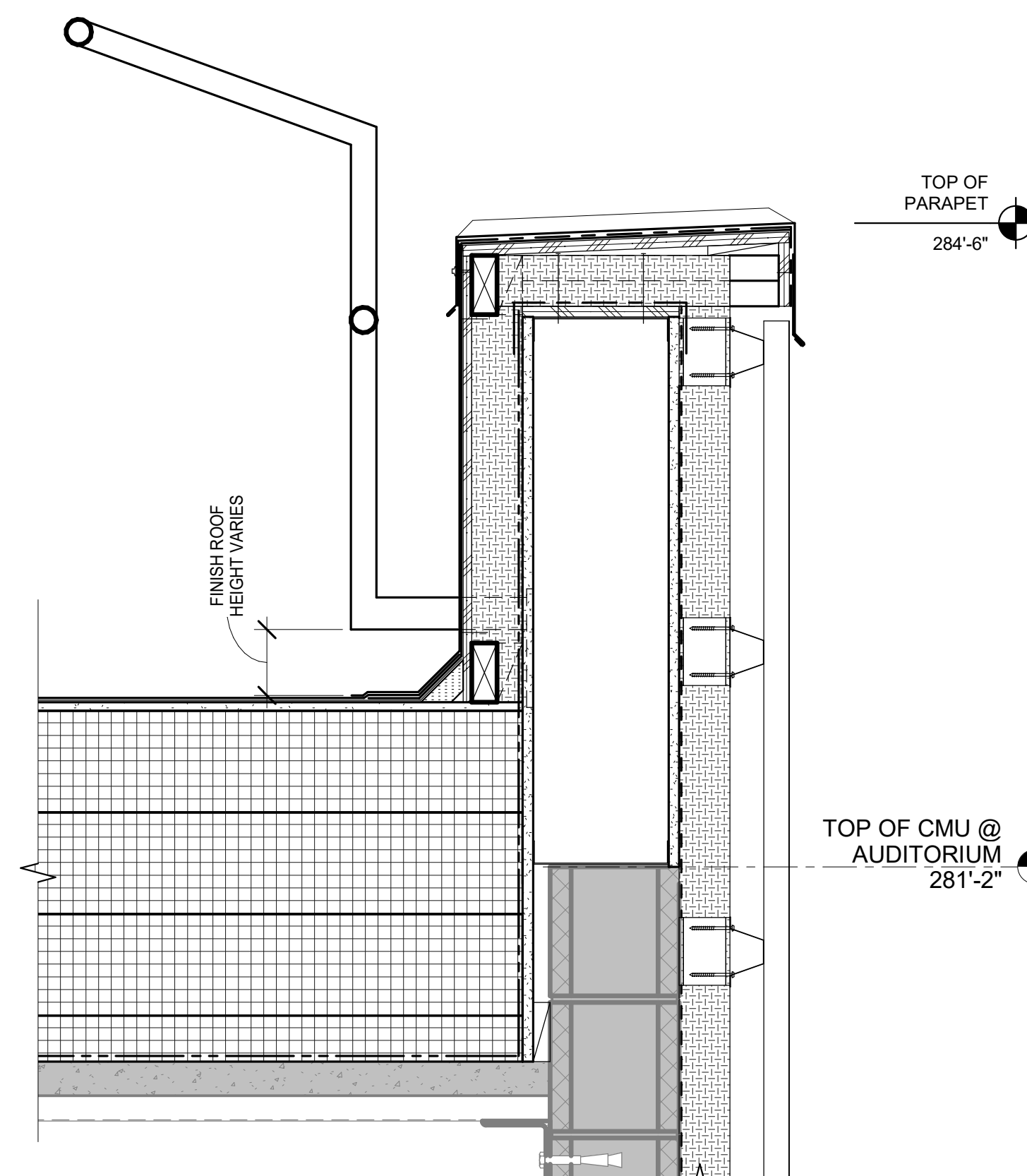
3 S PARAPET AT ELEC RM ROOF - ALTERNATE NO.5
1 1/2" = 1'-0"



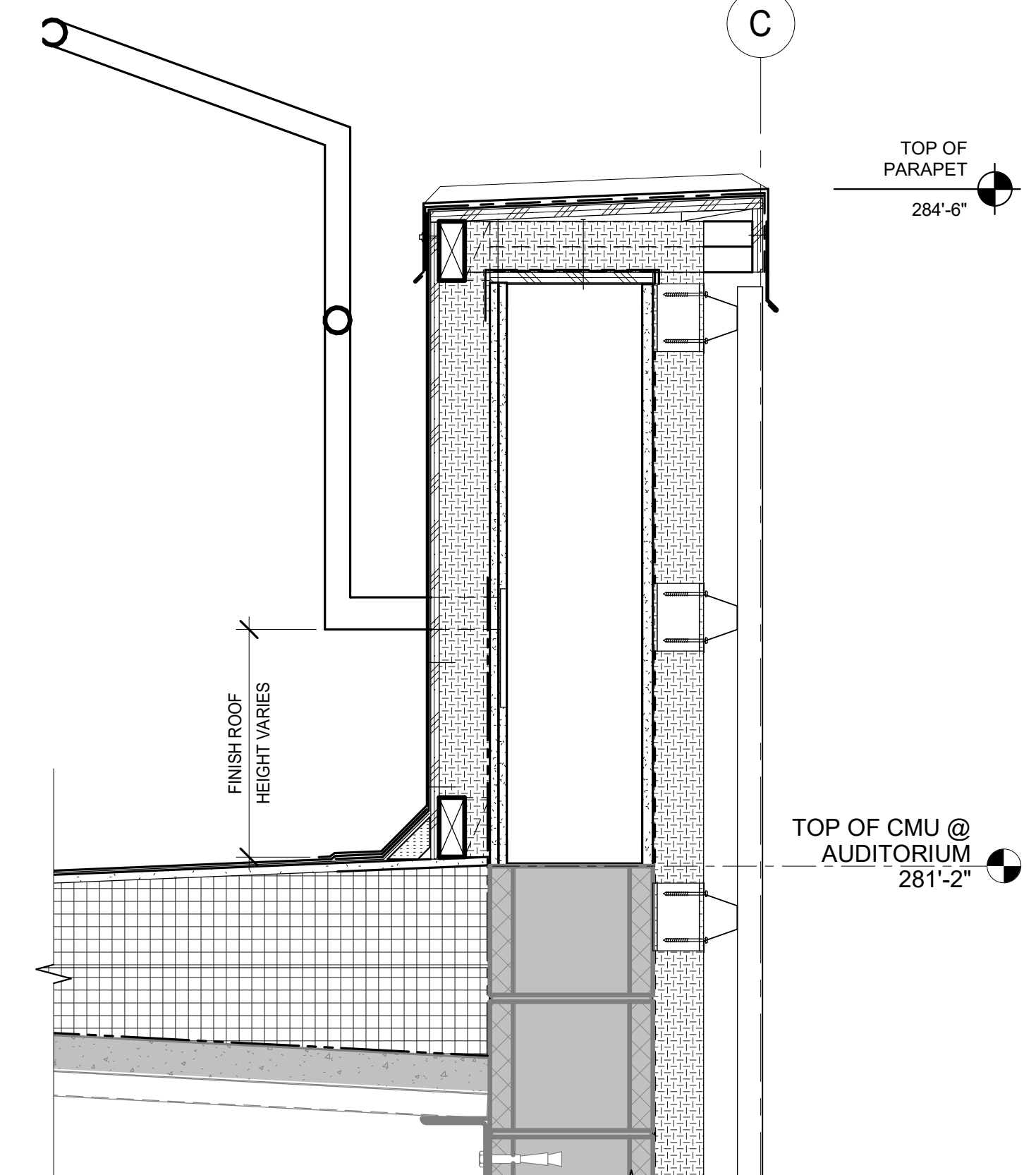
1 TYP PARAPET AT MAIN ROOF - ALTERNATE NO.4
1 1/2" = 1'-0"



5 TYP STAIRWELL ROOF SECTION - ALTERNATE NO.7
3/4" = 1'-0"

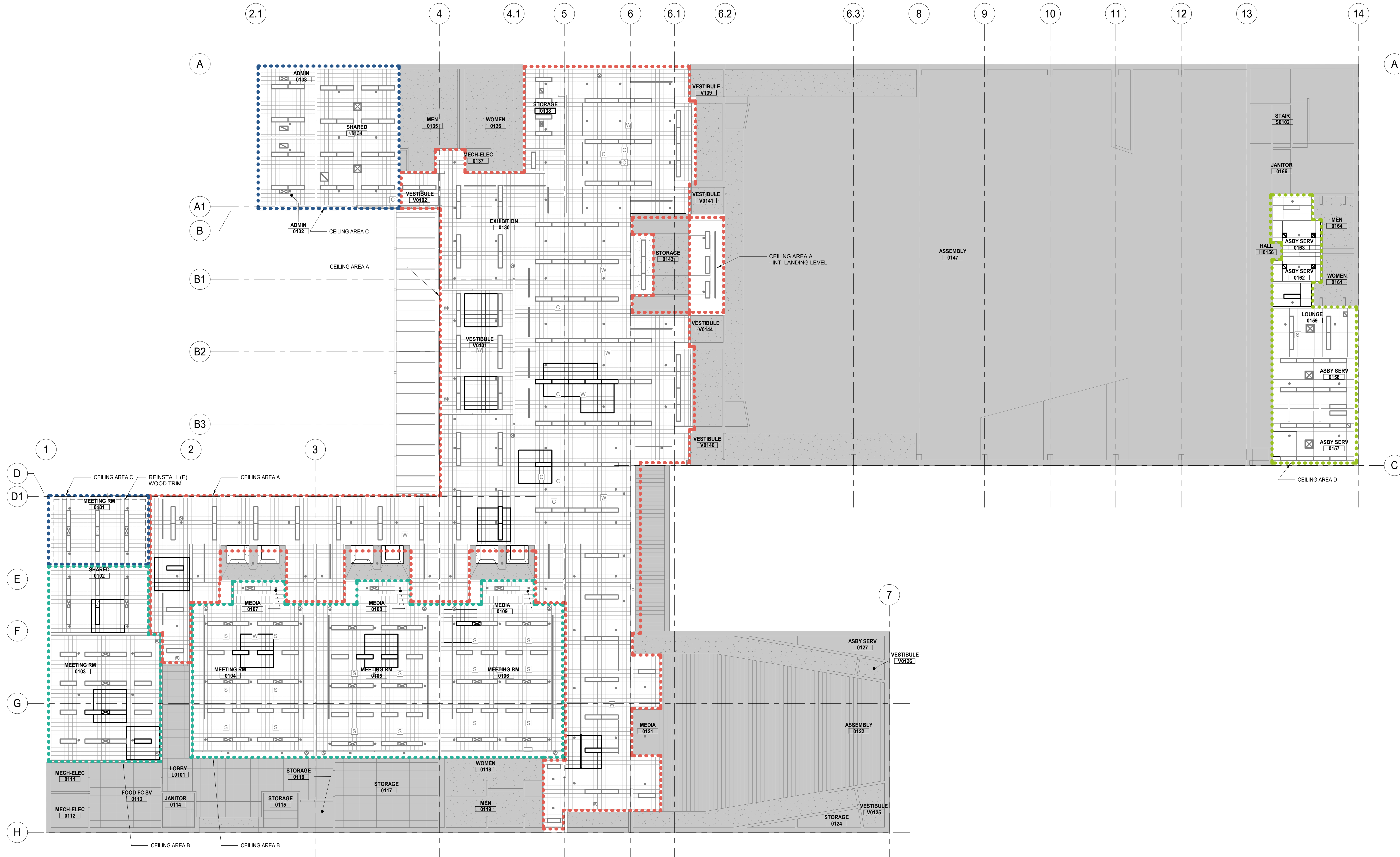


4 TYP PARAPET AT AUDITORIUM WEST - ALTERNATE NO.6
1 1/2" = 1'-0"

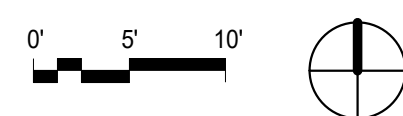


2 TYP PARAPET AT AUDITORIUM - ALTERNATE NO.6
1 1/2" = 1'-0"

#	REVISIONS	DATE



1 REFLECTED CEILING PLAN - LOWER LEVEL - ALTERNATE NO.3
1" = 10'-0"



RCP LEGEND

(E) CEILING AREA - NOT IN SCOPE	REMOVE, SALVAGE AND REINSTALL (E) LINEAR LIGHT FIXTURE	(E) CEILING MOUNTED SECURITY CAMERA, REMOVE AND REINSTALL IF IMPACTED BY CEILING REMOVAL	REMOVE, SALVAGE AND REINSTALL (E) SUPPLY AIR DIFFUSER, SIZE VARIES
(E) 12" x 12" ACOUSTICAL CEILING PANEL TO REMAIN	(E) LINEAR LIGHT FIXTURE TO REMAIN	(E) CEILING MOUNTED WIRELESS ACCESS POINT, REMOVE AND REINSTALL IF IMPACTED BY CEILING REMOVAL	(E) SUPPLY AIR DIFFUSER TO REMAIN, SIZE VARIES
REMOVE, SALVAGE AND REINSTALL (E) 12" x 12" ACOUSTICAL CEILING PANEL AND SUSPENSION SYSTEM	REMOVE, SALVAGE AND REINSTALL (E) TRACK LIGHT FIXTURE	REINSTALL AUDIO SPEAKER, REMOVE AND REINSTALL IF IMPACTED BY CEILING REMOVAL	REMOVE, SALVAGE AND REINSTALL (E) RETURN AIR GRILLE, SIZE VARIES
(E) 24x48 ACOUSTICAL CEILING PANEL TO REMAIN	(E) TRACK LIGHT FIXTURE TO REMAIN	(E) CEILING MOUNTED EXIT SIGN, REMOVE AND REINSTALL IF IMPACTED BY CEILING REMOVAL	(E) RETURN AIR GRILLE TO REMAIN, SIZE VARIES
REMOVE, SALVAGE AND REINSTALL (E) 24x48 ACOUSTICAL CEILING PANEL AND SUSPENSIONS SYSTEM		(E) WALL MOUNTED EXIT SIGN, REMOVE AND REINSTALL IF IMPACTED BY CEILING REMOVAL	(E) FIRE SPRINKLER TO REMAIN, PROTECT IN PLACE, SHOWN FOR LAYOUT PURPOSES ONLY
(E) GYPSUM BOARD TO REMAIN			