

KEY PLAN 1-5B
 PISTON CORING DEPLOYMENT & RECOVERY SYSTEM TRANSOM APPURTENANCE
 NTS

GENERAL NOTES

1. THE INTENT OF THIS DRAWING IS TO DETAIL THE TRANSOM PCDRS APPURTENANCE TO BE MOUNTED ON ANY REGIONAL CLASS VESSEL WITH A 24" DECK SOCKET GRID.
2. STEEL PLATE SHALL BE AS SHOWN, SHAPES TO BE ASTM A572 GR 50 OR BETTER OR ASTM A529 GR 50 OR BETTER, PIPE TO BE ASTM A53 GR.B.
3. ALL WELDS SHALL BE DOUBLE CONTINUOUS FILLET, LEGS TO BE 1/2 THINNER PLATE THICKNESS + 1/16" UNLESS NOTED OTHERWISE.
4. DISTURBED SURFACES ARE TO BE GROUND TO SSPC 3 AND REPAINTED PER SPECIFICATION.
5. ALL MATERIAL, HARDWARE, AND WORKMANSHIP SHALL BE IN ACCORDANCE WITH ABS REQUIREMENTS, REF. 1. WELDING TO BE IN CONFORMANCE WITH AWS D.1.1.
6. ONLY LOW HYDROGEN ELECTRODES 70XX SHALL BE USED.
7. NO ALLOWANCE MADE FOR FITUP OR SHRINKAGE.

REFERENCES

1. ABS GUIDE FOR SHIPBUILDING AND REPAIR QUALITY STANDARD FOR HULL STRUCTURES DURING CONSTRUCTION, MARCH 2007
2. GLOSTEN DWG. NO. 12100-070-01, GENERAL ARRANGEMENT

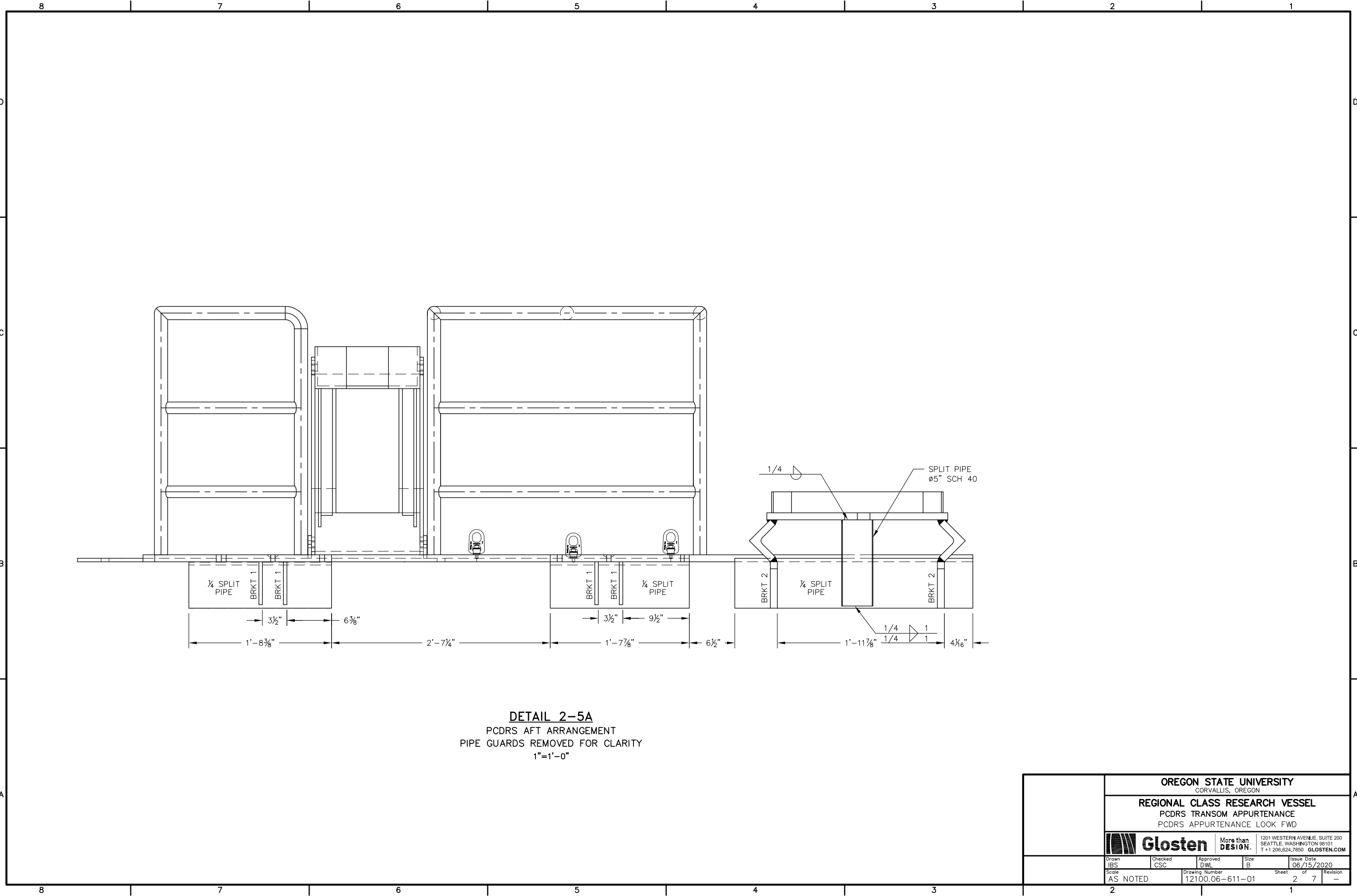
REVISIONS

ZONE	REV	DESCRIPTION	DATE	APPD
	A	INITIAL RELEASE	06/15/20	DWL

OREGON STATE UNIVERSITY
 CORVALLIS, OREGON
REGIONAL CLASS RESEARCH VESSEL
 PCDRS TRANSOM APPURTENANCE
 KEY PLAN

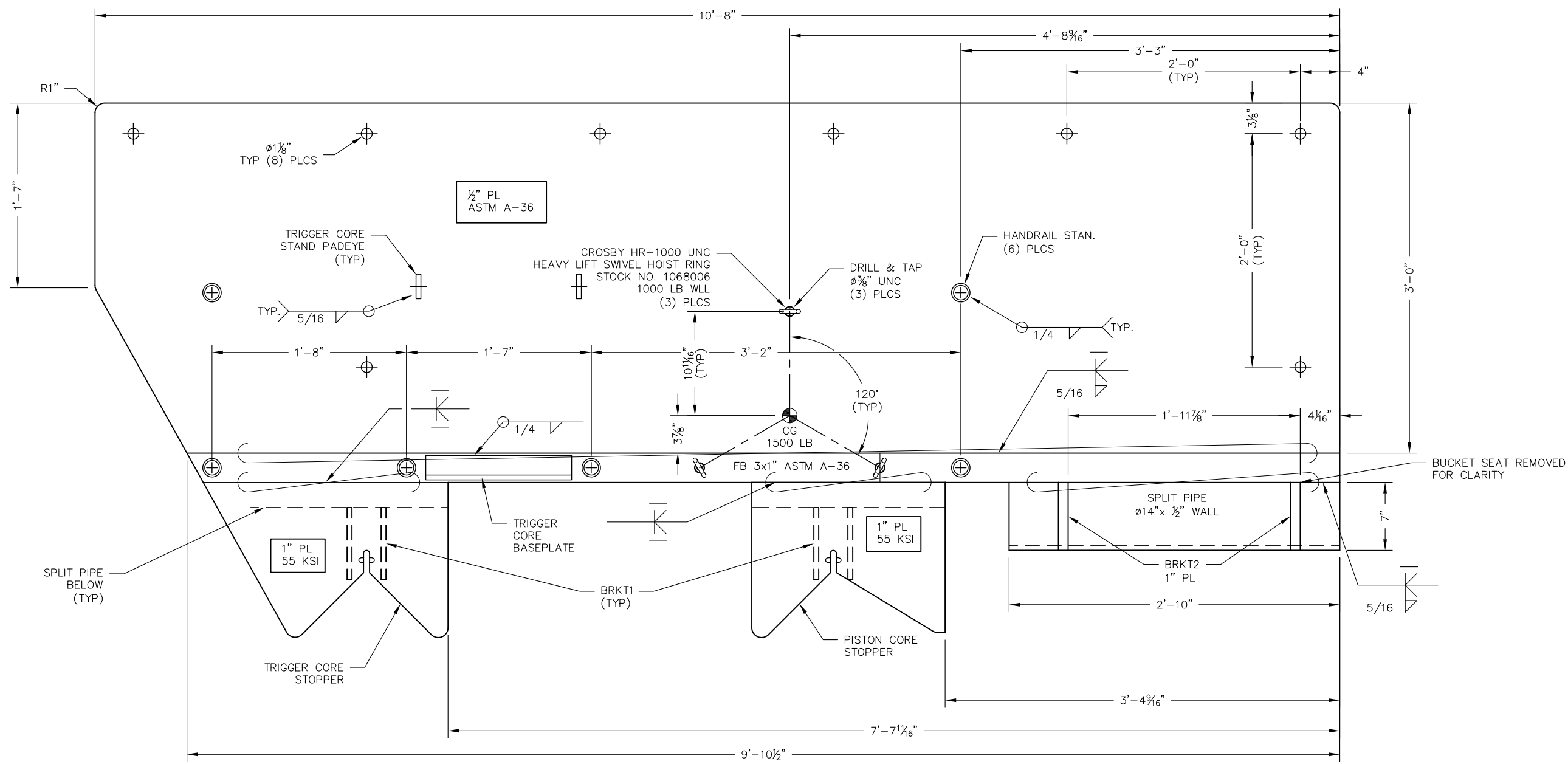


Drawn IBS	Checked CSC	Approved DWL	Size B	Issue Date 06/15/2020
Scale AS NOTED	Drawing Number 12100.06-611-01	Sheet 1	of 7	Revision -



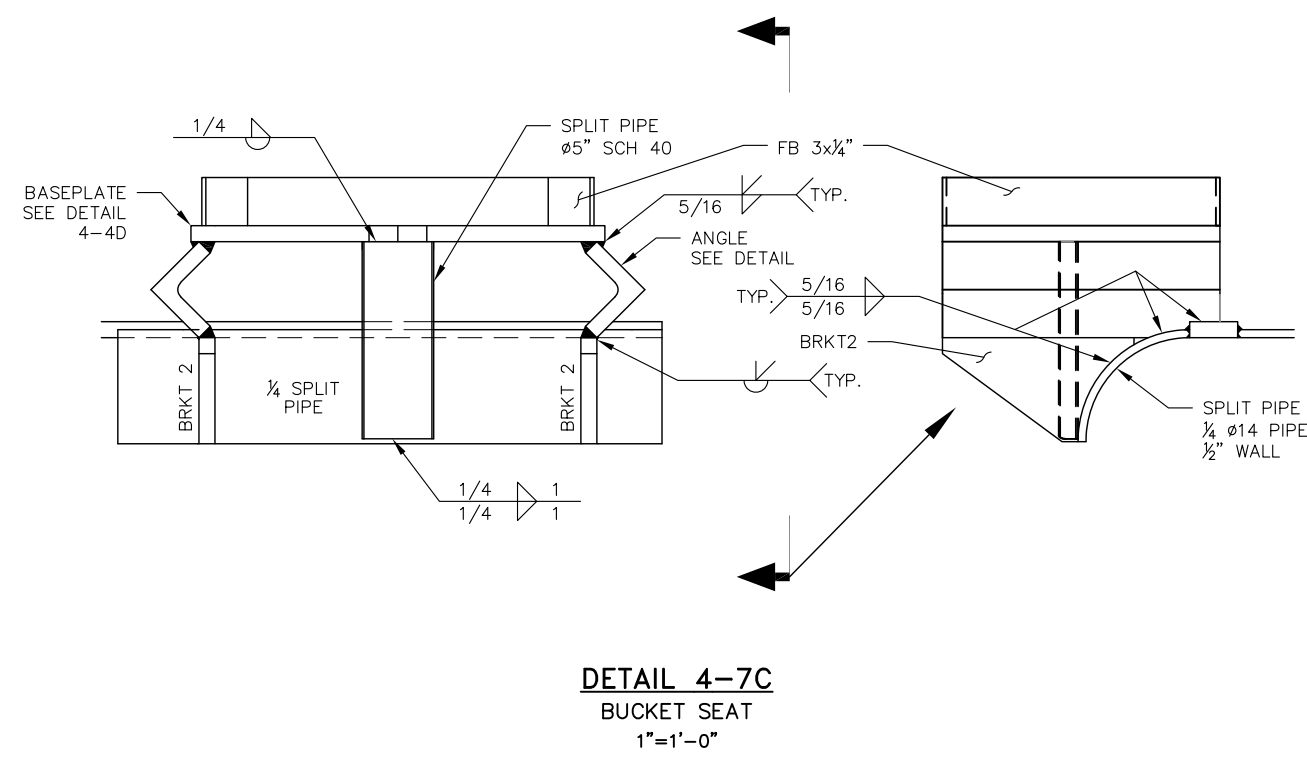
DETAIL 2-5A
 PCDRS AFT ARRANGEMENT
 PIPE GUARDS REMOVED FOR CLARITY
 1"=1'-0"

OREGON STATE UNIVERSITY CORVALLIS, OREGON				
REGIONAL CLASS RESEARCH VESSEL PCDRS TRANSOM APPURTENANCE PCDRS APPURTENANCE LOOK FWD				
Glosten		More than DESIGN.	1201 WESTERN AVENUE, SUITE 200 SEATTLE, WASHINGTON 98101 T+1 206.624.7850 GLOSTEN.COM	
Drawn IBS	Checked CSC	Approved DWL	Size B	Issue Date 06/15/2020
Scale AS NOTED	Drawing Number 12100.06-611-01	Sheet 2	of 7	Revision -

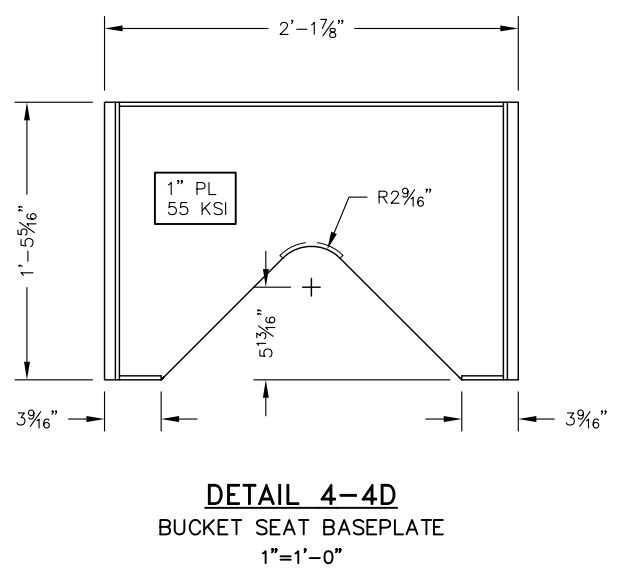


PLAN 3-5B
 DECK PLATE
 1"=1'-0"

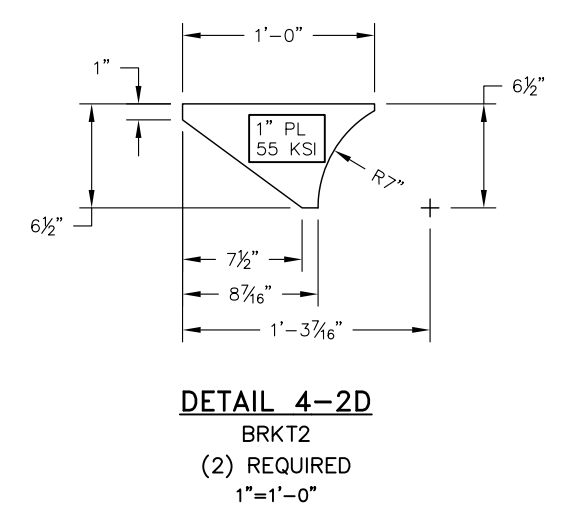
OREGON STATE UNIVERSITY CORVALLIS, OREGON					
REGIONAL CLASS RESEARCH VESSEL PCDRS TRANSM APPURTENANCE DECK PLATE					
Glosten		More than DESIGN.		1201 WESTERN AVENUE, SUITE 200 SEATTLE, WASHINGTON 98101 T+1 206.624.7850 GLOSTEN.COM	
Drawn	Checked	Approved	Size	Issue Date	
IBS	CSC	DWL	B	06/15/2020	
Scale	Drawing Number	Sheet	of	Revision	
AS NOTED	12100.06-611-01	3	7		



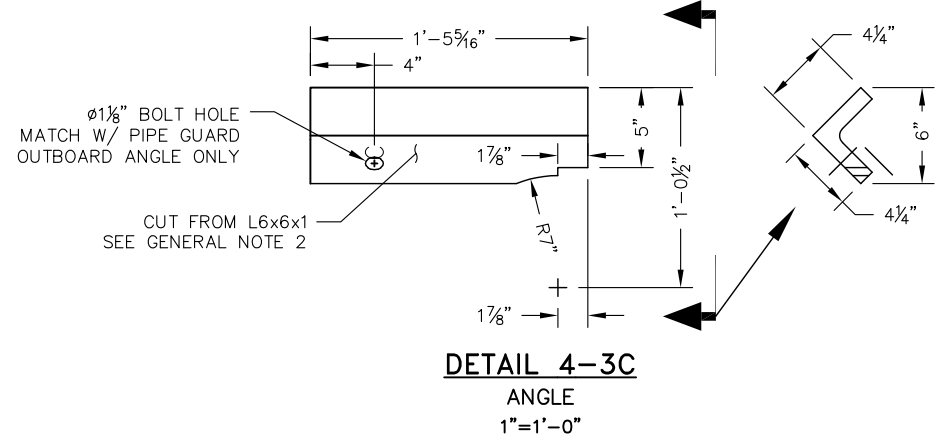
DETAIL 4-7C
 BUCKET SEAT
 1"=1'-0"



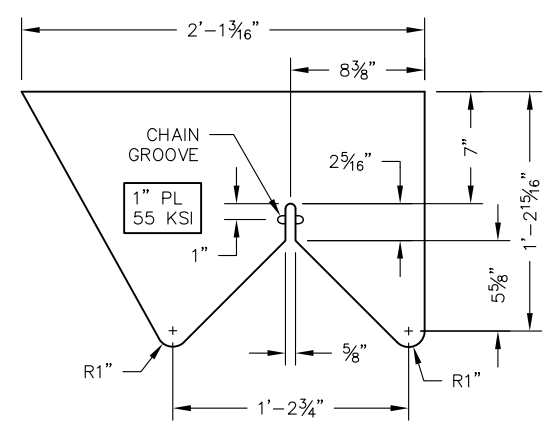
DETAIL 4-4D
 BUCKET SEAT BASEPLATE
 1"=1'-0"



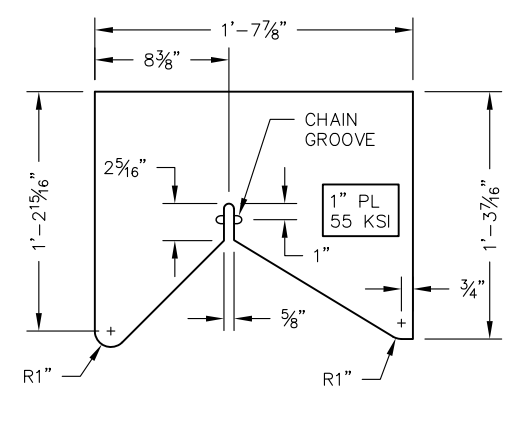
DETAIL 4-2D
 BRKT2
 (2) REQUIRED
 1"=1'-0"



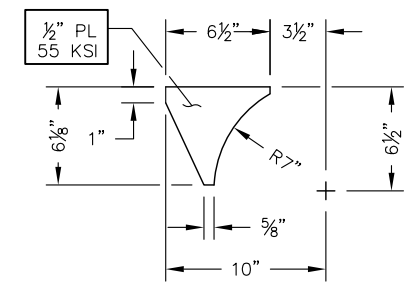
DETAIL 4-3C
 ANGLE
 1"=1'-0"



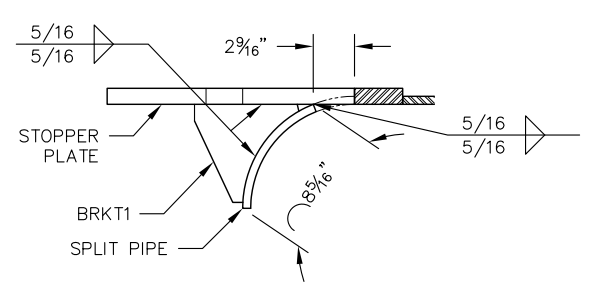
DETAIL 4-7A
 TRIGGER CORE STOPPER PLATE
 1"=1'-0"



DETAIL 4-5A
 PISTON CORE STOPPER PLATE
 1"=1'-0"

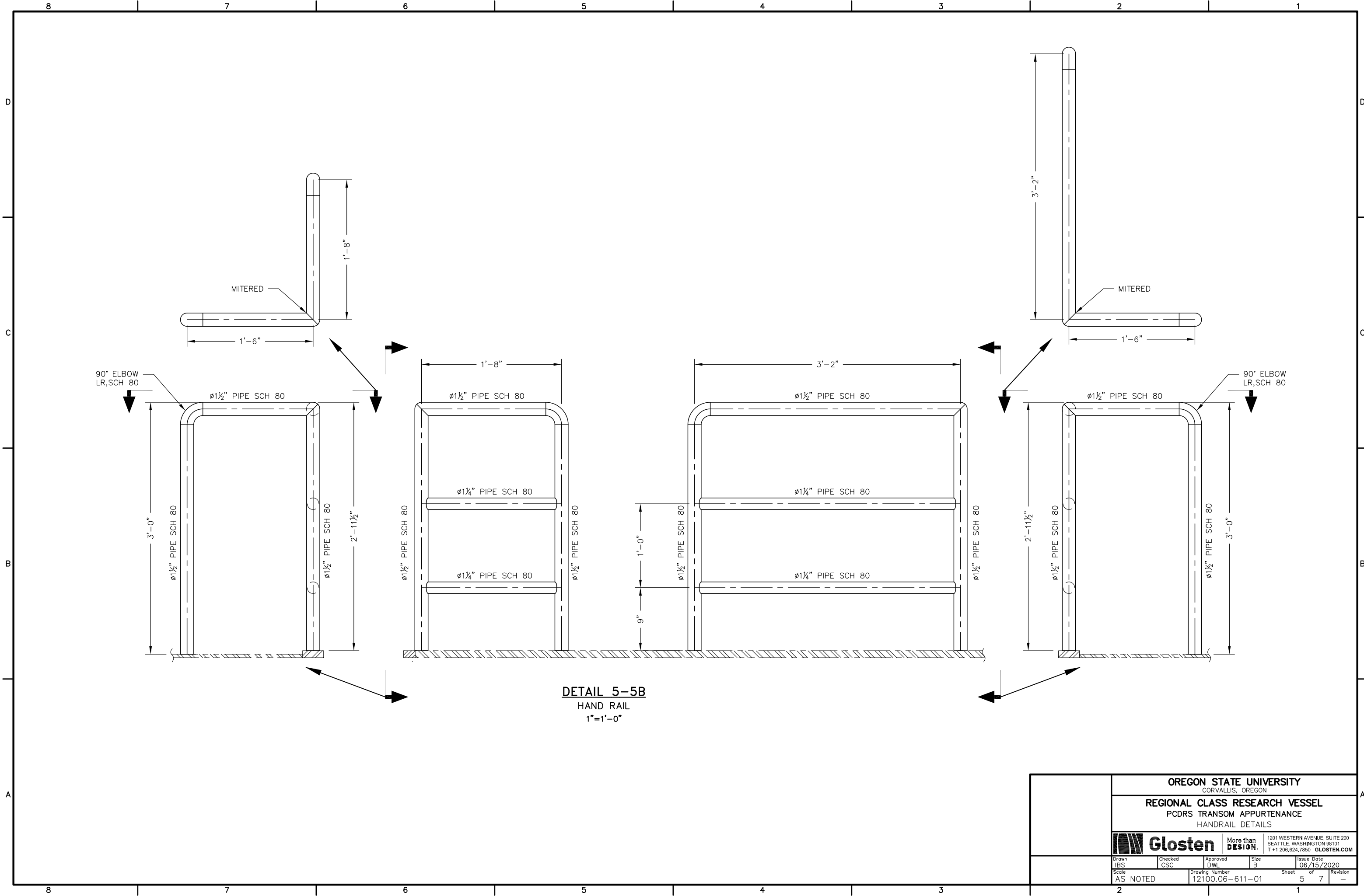


DETAIL 4-4A
 BRKT1
 (4) REQUIRED
 1"=1'-0"



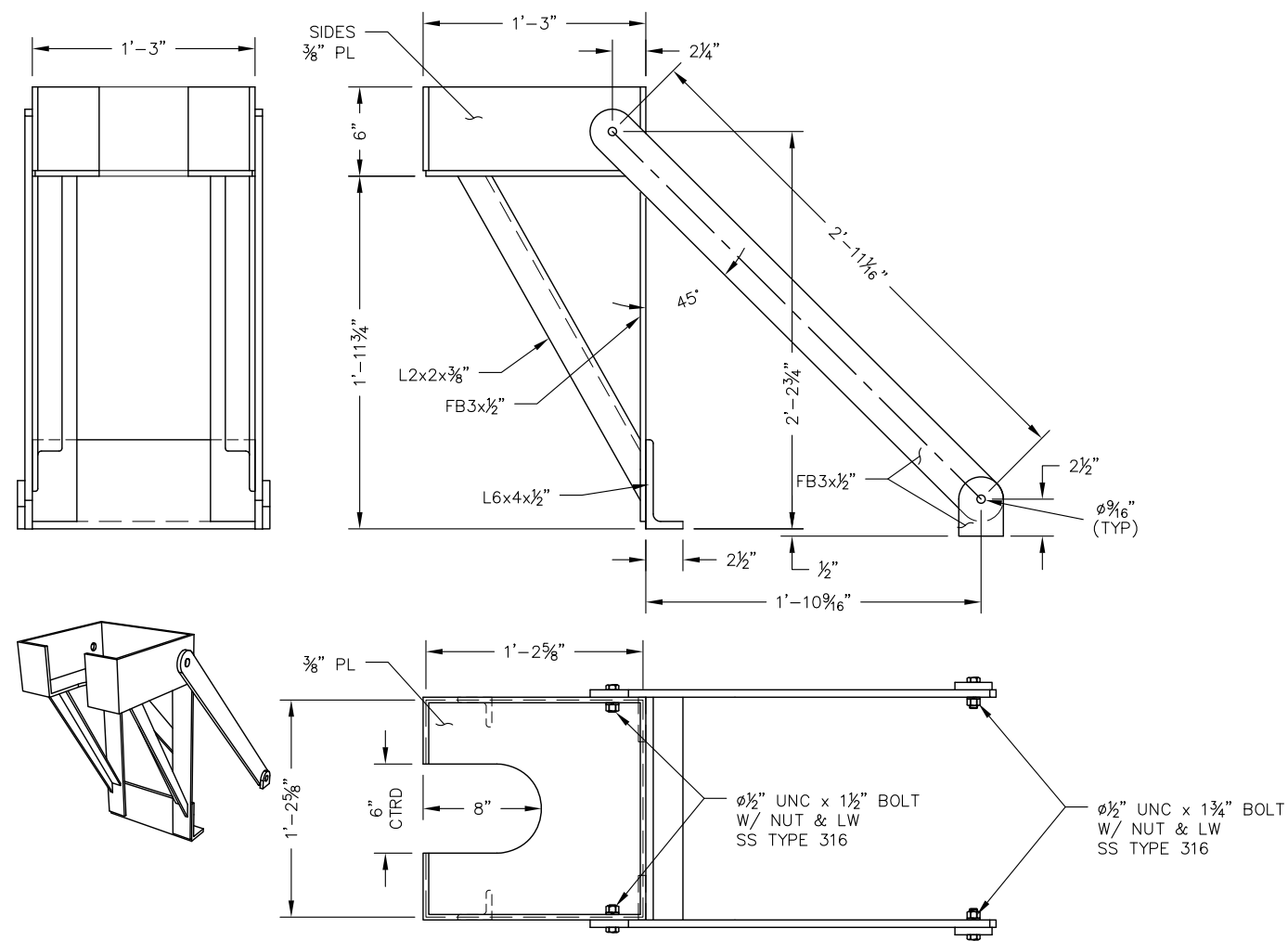
DETAIL 4-3A
 TYPICAL STOPPER BRACKET ASSEMBLY
 1"=1'-0"

OREGON STATE UNIVERSITY CORVALLIS, OREGON				
REGIONAL CLASS RESEARCH VESSEL PCDRS TRANSM APPURTENANCE DECK PLATE DETAILS				
Glosten		More than DESIGN.		1201 WESTERN AVENUE, SUITE 200 SEATTLE, WASHINGTON 98101 T+1 206.624.7850 GLOSTEN.COM
Drawn IBS	Checked CSC	Approved DWL	Size B	Issue Date 06/15/2020
Scale AS NOTED	Drawing Number 12100.06-611-01	Sheet 4	of 7	Revision -



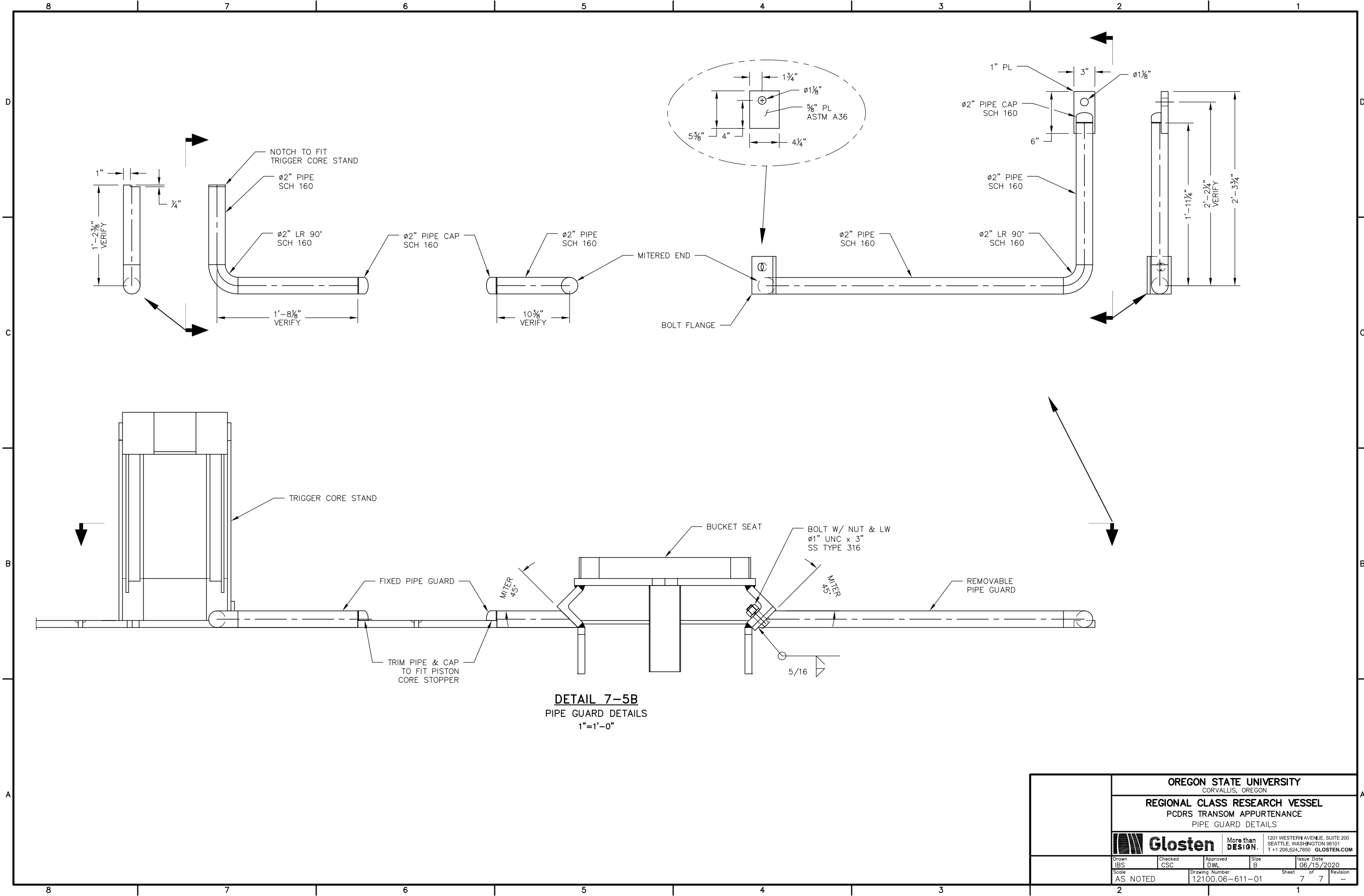
DETAIL 5-5B
 HAND RAIL
 1"=1'-0"

OREGON STATE UNIVERSITY CORVALLIS, OREGON					
REGIONAL CLASS RESEARCH VESSEL PCDRS TRANSM APPURTENANCE HANDRAIL DETAILS					
 Glosten		More than DESIGN.		<small>1201 WESTERN AVENUE, SUITE 200 SEATTLE, WASHINGTON 98101 T+1 206.624.7850 GLOSTEN.COM</small>	
Drawn IBS	Checked CSC	Approved DWL	Size B	Issue Date 06/15/2020	Revision -
Scale AS NOTED		Drawing Number 12100.06-611-01		Sheet 5	of 7



DETAIL 6-5B
 TRIGGER CORE STAND
 1"=1'-0"

OREGON STATE UNIVERSITY CORVALLIS, OREGON					
REGIONAL CLASS RESEARCH VESSEL PCDRS TRANSON APPURTENANCE TRIGGER CORE STAND DETAILS					
		More than DESIGN.		1201 WESTERN AVENUE, SUITE 200 SEATTLE, WASHINGTON 98101 T +1 206.624.7850 GLOSTEN.COM	
Drawn IBS	Checked CSC	Approved DWL	Size B	Issue Date 06/15/2020	Revision -
Scale AS NOTED		Drawing Number 12100.06-611-01		Sheet 6	of 7



DETAIL 7-5B
 PIPE GUARD DETAILS
 1"=1'-0"

OREGON STATE UNIVERSITY CORVALLIS, OREGON			
REGIONAL CLASS RESEARCH VESSEL PCDRS TRANSON APPURTENANCE PIPE GUARD DETAILS			
		More than DESIGN.	
1201 WESTERN AVENUE, SUITE 200 SEATTLE, WASHINGTON 98101 T +1 206.624.7850		GLOSTEN.COM	
Drawn IBS	Checked CSC	Approved DWL	Size B
Scale AS NOTED		Drawing Number 12100.06-611-01	Issue Date 06/15/2020
		Sheet 7	of 7
		Revision -	