

RESERVED
AS NOTED

GENERAL NOTES
1. PORTABLE EQUIPMENT AND ALTERNATE EQUIPMENT LOCATIONS SHOWN IN LIGHT GRAY.

REVISIONS						
REV	SH	ZONE	ITEM	DESCRIPTION	DATE	APPL SIG & ORG
-	ALL	ALL	-	INITIAL ISSUE	11/16/17	JBB/G&C
4	8B		1	REMOVED REFERENCE TO 'THRUSTER LUBE OIL TANK'		
4	4B		2	REMOVED CLEANING GEAR LOCKER		
4	3B		3	ADDED HORIZONTAL WT BOUNDARY, CHANGED ROOM NUMBER TO BOW THRUSTER VOID 4-5-0 AND EXTENDED GRATING TO AFT END OF BOWTHRUSTER ROOM		
4	2B		4	ADDED INSPECTION ACCESS TO VOID (2-(-2)-0		
6	2B		5	MOVED HATCH TO BE CENTERED ON FRAME 11.5		
7	3D		6	MOVED HATCH TO BE CENTERED ON FRAME 11.5		
8	4D		7	REMOVED ROOM NUMBER FROM WORK SHOP AREA		
8	4C		8	CHANGED ROOM NUMBER TO 3-31-0		
8	3C		9	EXTENDED GRATING TO AFT END OF BOW THRUSTER ROOM, CHANGED DEPICTION		
8	2D		10	ADDED INSPECTION ACCESS TO VOID (2-(-2)-0 (REVISIONS CONTINUE ON SEE SHEET 1A)		

25	PORT TRANSDUCER POLE	M015736
24	SEA CHEST ARRANGEMENTS	6096-163-001
23	EMERGENCY TOWING PLAN	6096-500-003
22	ANCHOR HANDLING & MOORING FOUNDATIONS	6096-581-001
21	ALUMINUM SUPERSTRUCTURE ARRANGEMENT	6096-150-001
20	BROW DESIGN AND STORAGE	6096-616-002
19	PROVISION COOLING PLANT (HEINEN & HOPMAN)	32817023-601
18	CHILLER (HEINEN & HOPMAN)	32817023-401
17	ANCHOR WINCH RIGHT VERSION	RH321674
16	ANCHOR WINCH LEFT VERSION	RH321675
15	PORTABLE WINCH (RAPP)	RH324106
14	PORTABLE OFFSHORE FOLDABLE TELESCOPIC CRANE (RAPP)	MG-FT005D-S2
13	HYDROGRAPHIC WINCH (RAPP)	RH324104
12	MAIN A-FRAME STERN (RAPP)	18729
11	PORTABLE A-FRAME SIDE (RAPP)	17864
10	CTD DAVIT (RAPP)	17844
9	OFFSHORE FOLDABLE TELESCOPIC CRANE - MAIN DECK (RAPP)	MG-FT020DH-S3
8	PILOTHOUSE & CHART ROOM ARRANGEMENT	6096-661-001
7	MACHINERY ARRANGEMENT	6096-500-001
6	HEATING, VENTILATION & AIR CONDITIONING SYSTEM	6096-512-001
5	FREING PORT ARRANGEMENT & DETAILS	6096-190-001
4	OVERBOARD HANDLING SYSTEMS	6096-710-001
3	MOORING ARRANGEMENT	6096-580-001
2	LINES PLAN	6096-070-002
1	TECHNICAL SPECIFICATION	12100.05
NO.	TITLE	DRAWING NUMBER

REFERENCE PLANS
SPECIAL NOTATIONS

THIS DRAWING IS A LIVE DOCUMENT AND REFLECTS LATEST DESIGN DATA AS NOTED. SEE REFERENCES FOR INFORMATION.

DRAWING CONFIDENTIALITY STATEMENT
THIS DRAWING IS TO BE USED FOR CONSTRUCTION OF THE REGIONAL CLASS RESEARCH VESSELS. USE AND/OR REPRODUCTION OF THIS DRAWING AND FURTHER DISSEMINATION IS AUTHORIZED ONLY AS DIRECTED BY GULF ISLAND SHIPYARDS OR OREGON STATE UNIVERSITY.

GULF ISLAND SHIPYARDS
301 GULF ISLAND ROAD
HOUMA, LA 70363
PHONE: (985) 872-2305
CONTRACT/PO NO.
184162

OREGON STATE UNIVERSITY
CORVALLIS, OR 97331
199'-6" REGIONAL CLASS RESEARCH VESSEL
GENERAL ARRANGEMENT COVER SHEET

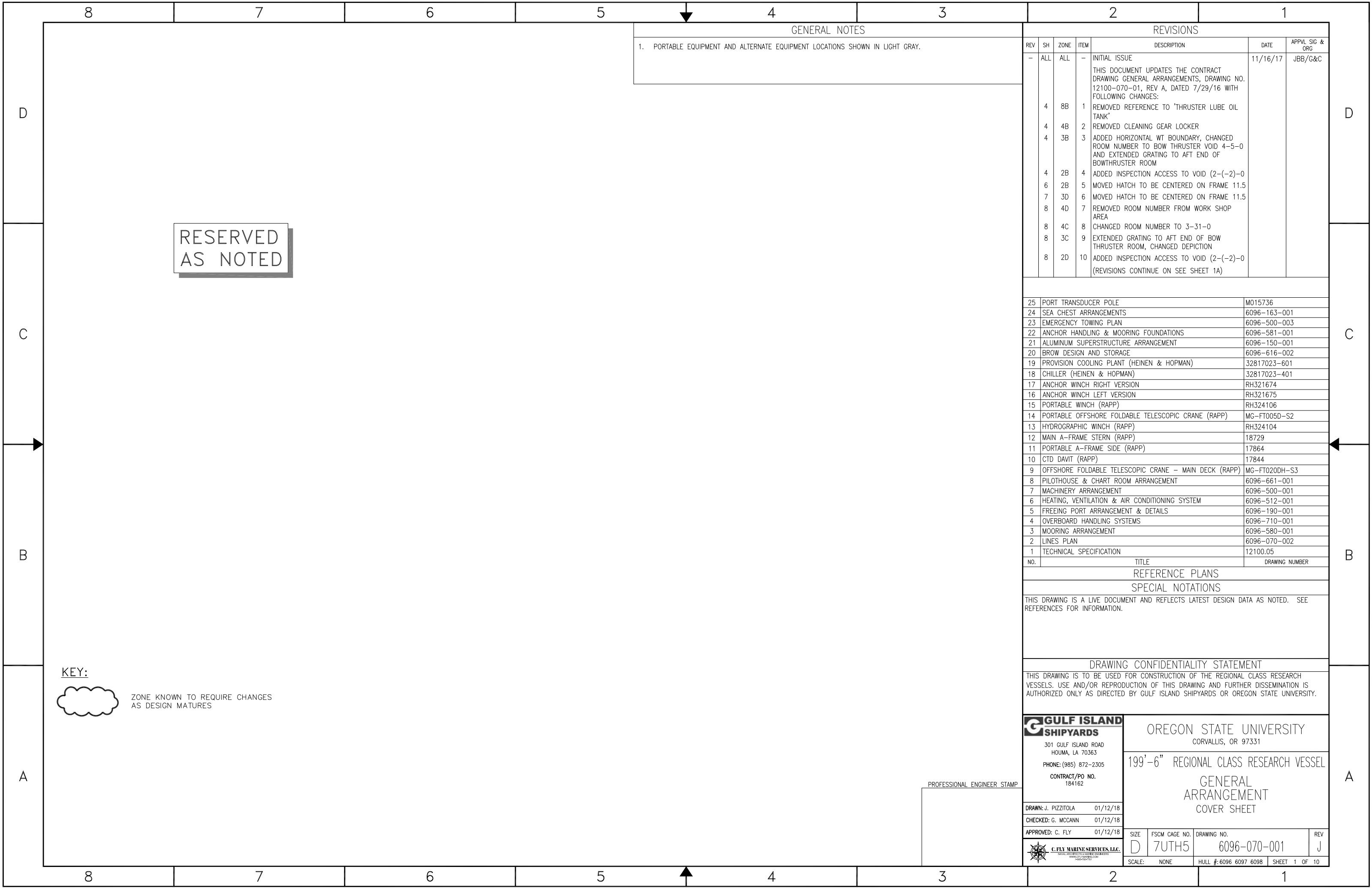
DRAWN: J. PIZZITOLA 01/12/18
CHECKED: G. MCCANN 01/12/18
APPROVED: C. FLY 01/12/18

C.FLY MARINE SERVICES, LLC.
MARINE DESIGN & CONSTRUCTION
WWW.CFLYMARINE.COM

PROFESSIONAL ENGINEER STAMP
SCALE: NONE HULL #: 6096 6097 6098 SHEET 1 OF 10

KEY:
 ZONE KNOWN TO REQUIRE CHANGES AS DESIGN MATURES

PROFESSIONAL ENGINEER STAMP



REVISIONS CONTINUED

REVISIONS CONTINUED

REV	SH	ZONE	ITEM	DESCRIPTION	DATE	APPVL SIG & ORG
D	9	4C	39	IN LOUNGE RELOCATED JOINER BHD FROM FR 33 TO FRAME 33 1/2 AS FOR CHANGE ORDER 27 FOR HULL 6096 ONLY.	6/11/19	AD/CF
	9	4C	40	IN LOUNGE RELOCATED FWD, STARBOARD BHD TO PORT TO MAINTAIN PASSAGEWAY WIDTH FOR HULL 6096 ONLY.		
	9	4C	41	DELETED 654-1 ROUND TABLE FOR HULL 6096 ONLY.		
	9	4C	42	REPLACED 600-2 PADDED ARM CHAIR WITH 3 PERSON SOFA FOR HULL 6096 ONLY.		
	9	4C	43	REPLACED 645-4 SOFA WITH 3 PERSON SOFA FOR HULL 6096 ONLY.		
	9	4C	44	DELETED 645-7 2 DRAWER FILLING CABINET FOR HULL 6096 ONLY.		
	9	4C	45	DELETED 645-6 DESK FOR HULL 6096 ONLY.		
	9	4C	46	REPLACED 640-16 BOOK SHELF WITH 72" TALL BOOKSHELF FOR HULL 6096 ONLY.		
	9	4C	47	ADDED 1 COFFEE TABLE FOR HULL 6096 ONLY.		
	9	4C	48	ADDED 1 STORAGE CABINET FOR HULL 6096 ONLY.		
	9	4C	49	DELETED HALF HEIGHT BHD IN MESS FOR HULL 6096 ONLY.		
	9	4C	50	LOCATED STRUCTURAL SANCTIONS FOR HULL 6096 ONLY.		
	9	4C	51	REMOVED BOOTH SEATING FOR HULL 6096 ONLY.		
	9	4C	52	ADDED LONG CUSHIONED BENCH SEATED ALONG OUTBOARD SHELL, ALSO REPLACED RECTANGULAR TABLES WITH LONGER TABLES WITH ROUND CORNERS FOR HULL 6096 ONLY.		
	9	4C	53	INCREASED SEATING FROM 18 TO 20 BY PROVIDING 16 SIDE CHAIRS FOR HULL 6096 ONLY.		
	9	4C	54	REARRANGED WHEEL CHAIR LOCATION FOR HULL 6096 ONLY.		
	9	4C	55	MOVED SLIDING DOORS TO FIT NEW ARRANGEMENT FOR HULL 6096 ONLY.		
D	9	4C	56	ADDED DOOR TO DC LKR.	6/19/19	AD/CF
	9	4C	57	ADDED FREEING PORT TO VESTIBULE.		
	9	4C	58	MOVED DOOR IN BOSUN STORES/SHOP 10 INCHES TOWARDS PORTSIDE.		
	9	4C	59	SHIFTED CLEAR FUEL OVERFLOW INBOARD.		
	9	4C	60	SHIFTED EYEWASH OUTBOARD.		
	10	5C,5A	61	MOVED INBOARD BHD OUTBOARD TO MATCH NEW SEACHEST ARRANGEMENT.		
	8	6A	62	REMOVED SHORE POWER LOCATION.		
E	2	6A	1	REVISED ELEVATION PER OSU COMMENTS.	8/8/19	GPM/CFF
	3	4A	2	ADDED SIDE SHELL SOCKETS, PER OSU COMMENTS.		
	4	5A	3,4	REVISED FLAG BLOCK CABLE PIPE. REVISED CENTERLINE STANCHIONS PER OSU COMMENTS		
	5	3A	5	REVISED PER OSU COMMENTS.		
	6	5C,4A	6	UPDATE EXHAUST UPTAKE VIEWS, ADDING EMERGENCY EXHAUST, AND VARIOUS VENTS.		
	8	4C	7	VERIFIED WARDROBE/SEC. WITH MARINE INTERIORS ARRANGEMENT.		
	9	4C,4A	8	REVISED PER OSU COMMENTS. ADDED PARTIAL PLAN VIEW, FOR HULL #6097, INDICATING THE FIXED PEDESTAL SEATING IN THE MESS AREA. HULL'S #6096 & 6098, WILL HAVE FOLDING CHAIRS FOR SEATING.		
	3	3B	10	REMOVED OUTBOARD PORT RUBRAIN FR56-FR67	9/12/19	KS/CFF
	9	3D,3B	11	MOVED SANCTIONS TO CORRECT LOCATION IN MESS		
	9	3C,3A	12	ADDED MISSING PORTLIGHTS TO MAIN DECK		
F	9	2D	1	UPDATED TO REFLECT CHANGE ORDER 38	9/16/19	
G	2,3	2C,7B	1	EXTENDED ANCHOR HANDLING BOLSTER TO 13'6" ABV BL	11/18/19	JGP/CFF
	4	7B	2	ADDED UNDERWATER CAMERA	1/08/2020	MJF/CFF
	10	7C,7D	2			
H	4	4C	1	UPDATED HEIGHT OF POTABLE WATER TANK	3/20/2020	JGP/CFF
	4	6C	2	REMOVED PRELIMINARY FROM CRANE		
	7	4C	3	REMOVED UPPER VIEW OF HULLS 6096 & 6098 PER CO-045		

	7	4C	4	ADJUSTED HEAD SPACE TO ACCOMMODATE ELECTRICAL PANEL AT FR. 17		
	8	6B, 6D	5	ADDED CONTAINMENT FOR VENTILATION INTAKE		
	9	2B, 2C	6	REARRANGED DRY STORES TO MATCH MODEL		
VAR	VAR	VAR	7	UPDATED RAILING ON 01 DECK		
	6	5B	8	UPDATED CHART TABLE PER CO-046		
	3, 9	2B, 6D	9	UPDATED TRANSDUCER POLE LOCATION PER CO-050		
J	2,3	VAR	1	UPDATED FWD MAST LIGHT.		
	4	4B	2	UPDATED POTABLE WATER TANK.		
	7	5B,4B	3	UPDATED DOORS AND BULKHEADS.		
	8	5D	4	UPDATED EQUIPMENT IN HAVC EQUIP 01-40-4.		
	10	6C	5	UPDATED W/C 3-65-1 ARRANGEMENT.		
	8	6B,6C	6	ADDED CRANE LOCAL CONTROL AND UPDATED SLEWING LOCK LOCATION.		
	10	3C	7	RELOCATED CONDUITS TO TRANSCEIVER ROOM 2-18-1.	9/1/20	KJM

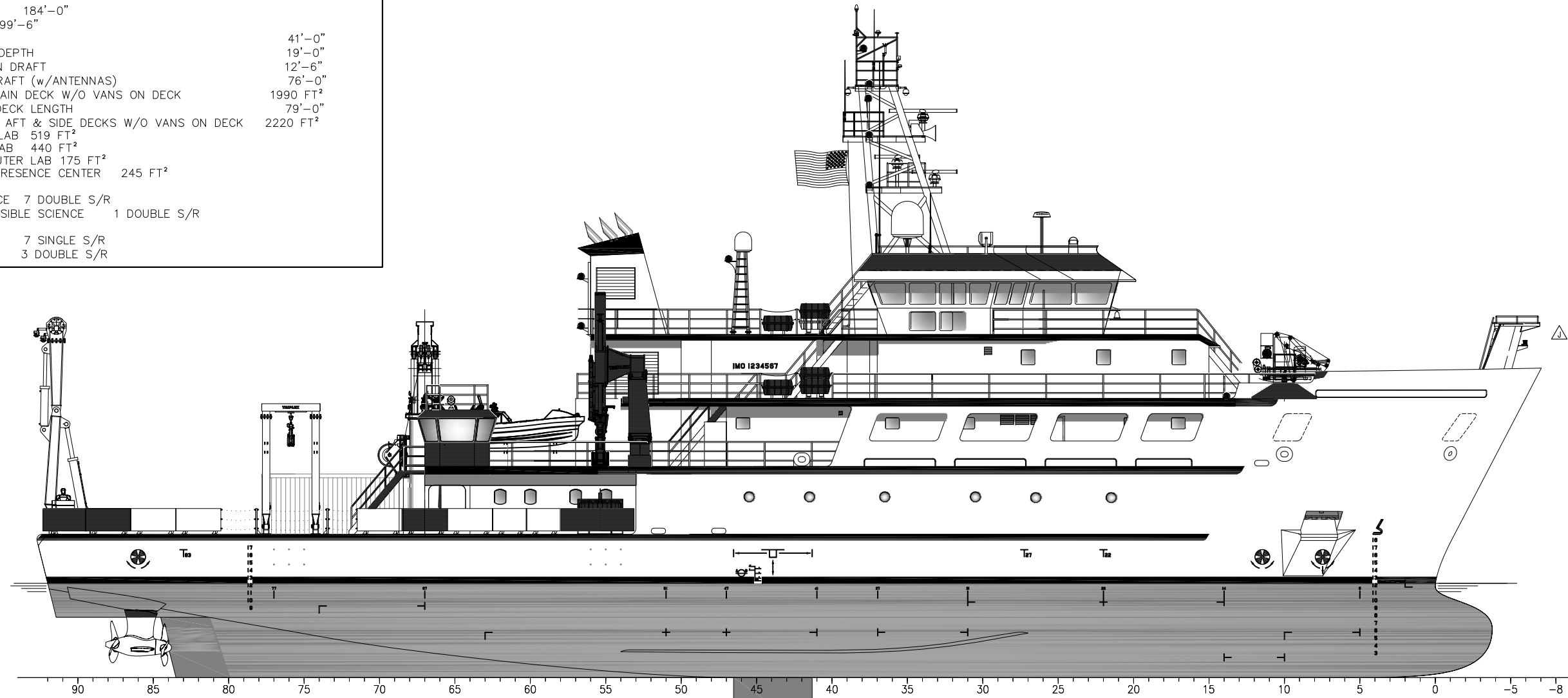
OREGON STATE UNIVERSITY
CORVALLIS, OR 97331

199'-6" REGIONAL CLASS RESEARCH VESSEL
GENERAL
ARRANGEMENT
GENERAL NOTES & REFERENCES

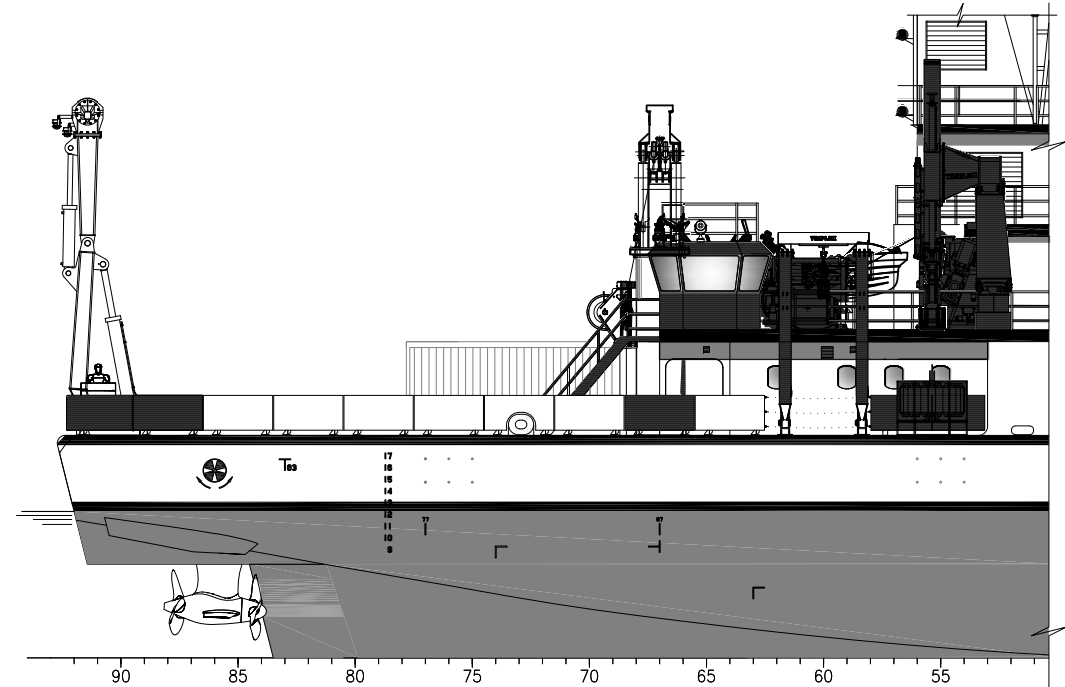
PROFESSIONAL ENGINEER STAMP

SIZE	FSCM CAGE NO.	DRAWING NO.	REV
D	7UTH5	6096-070-001	J
SCALE:	NONE	HULL #: 6096 6097 6098	SHEET 1B OF 10

VESSEL PARTICULARS	
LWL	184'-0"
LOA	199'-6"
BEAM	41'-0"
HULL DEPTH	19'-0"
DESIGN DRAFT	12'-6"
AIR DRAFT (w/ANTENNAS)	76'-0"
AFT MAIN DECK W/O VANS ON DECK	1990 FT ²
SIDE DECK LENGTH	79'-0"
TOTAL AFT & SIDE DECKS W/O VANS ON DECK	2220 FT ²
MAIN LAB	519 FT ²
WET LAB	440 FT ²
COMPUTER LAB	175 FT ²
DATAPRESENCE CENTER	245 FT ²
SCIENCE	7 DOUBLE S/R
ACCESSIBLE SCIENCE	1 DOUBLE S/R
CREW	7 SINGLE S/R
	3 DOUBLE S/R



ELEVATION 2-5A
OUTBOARD PROFILE
1/8"=1'-0"

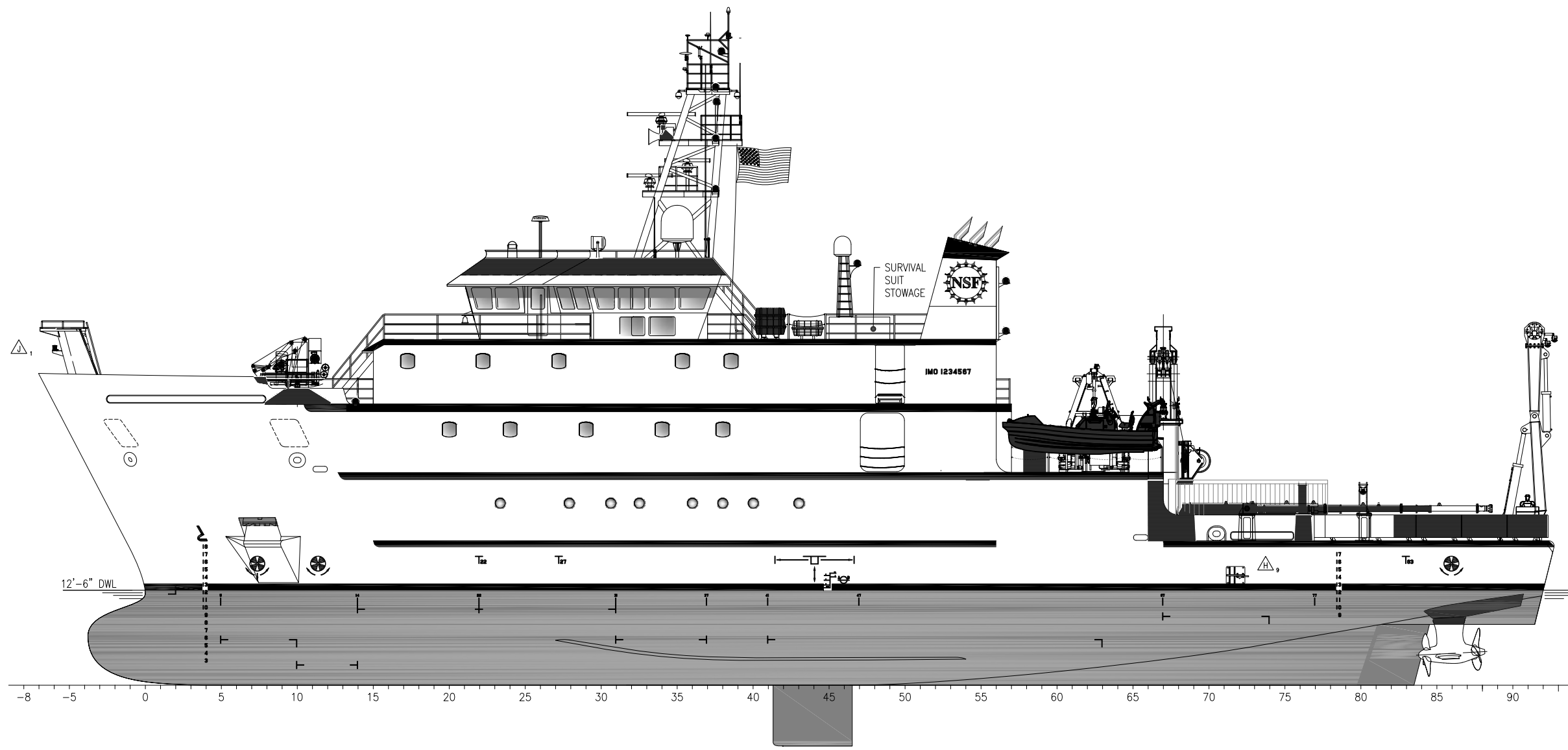


ELEVATION 2-6A
OUTBOARD PROFILE w/SIDE A-FRAME GATE OPEN
1/8"=1'-0"

OREGON STATE UNIVERSITY
CORVALLIS, OR 97331
199'-6" REGIONAL CLASS RESEARCH VESSEL
GENERAL ARRANGEMENT
ELEVATION - OUTBOARD PROFILE

PROFESSIONAL ENGINEER STAMP

SIZE D	FSCM CAGE NO. 7UTH5	DRAWING NO. 6096-070-001	REV J
SCALE: NONE	HULL #: 6096 6097 6098	SHEET 2 OF 10	

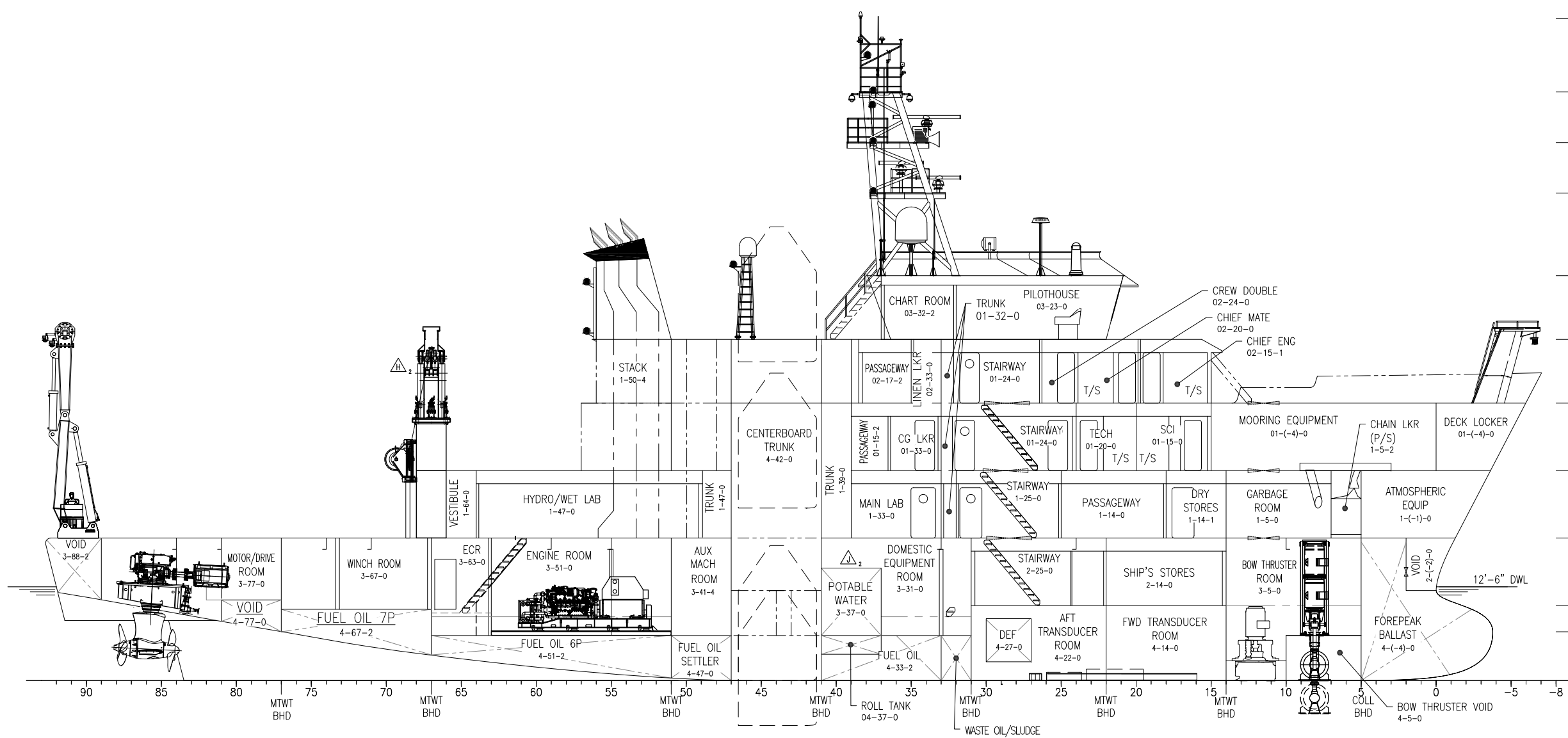


ELEVATION 3-4A
 PORT OUTBOARD PROFILE
 1/8"=1'-0"

OREGON STATE UNIVERSITY
 CORVALLIS, OR 97331
 199'-6" REGIONAL CLASS RESEARCH VESSEL
 GENERAL
 ARRANGEMENT
 ELEVATION - PORT OUTBOARD PROFILE

PROFESSIONAL ENGINEER STAMP

SIZE	FSCM CAGE NO.	DRAWING NO.	REV
D	7UTH5	6096-070-001	J
SCALE:	NONE	HULL #: 6096 6097 6098	SHEET 3 OF 10



- AIR DRAFT
88'-4" ABL
- MAST 03 LEVEL
78'-6" ABL
- MAST 02 LEVEL
71'-9" ABL
- MAST 01 LEVEL
65'-0" ABL
- 04 LEVEL
54'-0" ABL
- 03 LEVEL
45'-6" ABL
- 02 LEVEL
37'-0" ABL
- 01 LEVEL
28'-0" ABL
- MAIN DECK
19'-0" ABL
- 1st PLATFORM
10'-0" ABL
- TANK TOP
6'-0" ABL

ELEVATION 4-5A
INBOARD PROFILE
1/8"=1'-0"

OREGON STATE UNIVERSITY
CORVALLIS, OR 97331

199'-6" REGIONAL CLASS RESEARCH VESSEL
GENERAL ARRANGEMENT
ELEVATION - INBOARD PROFILE

SIZE D	FSCM CAGE NO. 7UTH5	DRAWING NO. 6096-070-001	REV J
SCALE: NONE		HULL #: 6096 6097 6098	SHEET 4 OF 10

PROFESSIONAL ENGINEER STAMP

8

7

6

5

4

3

2

1

D

D

C

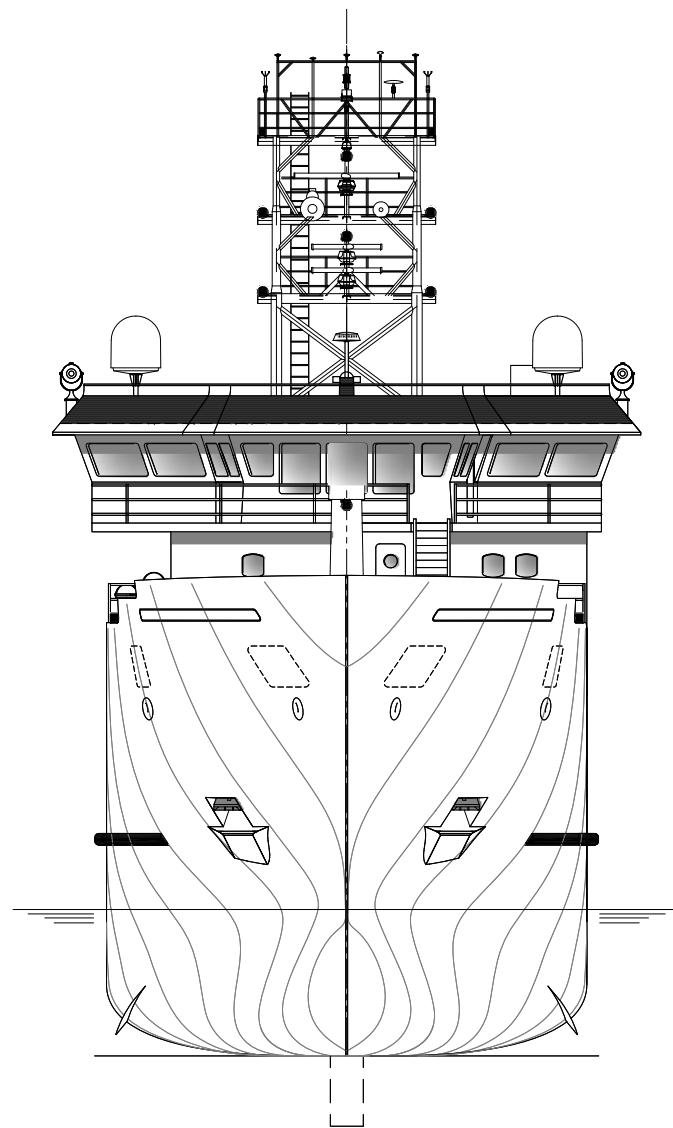
C

B

B

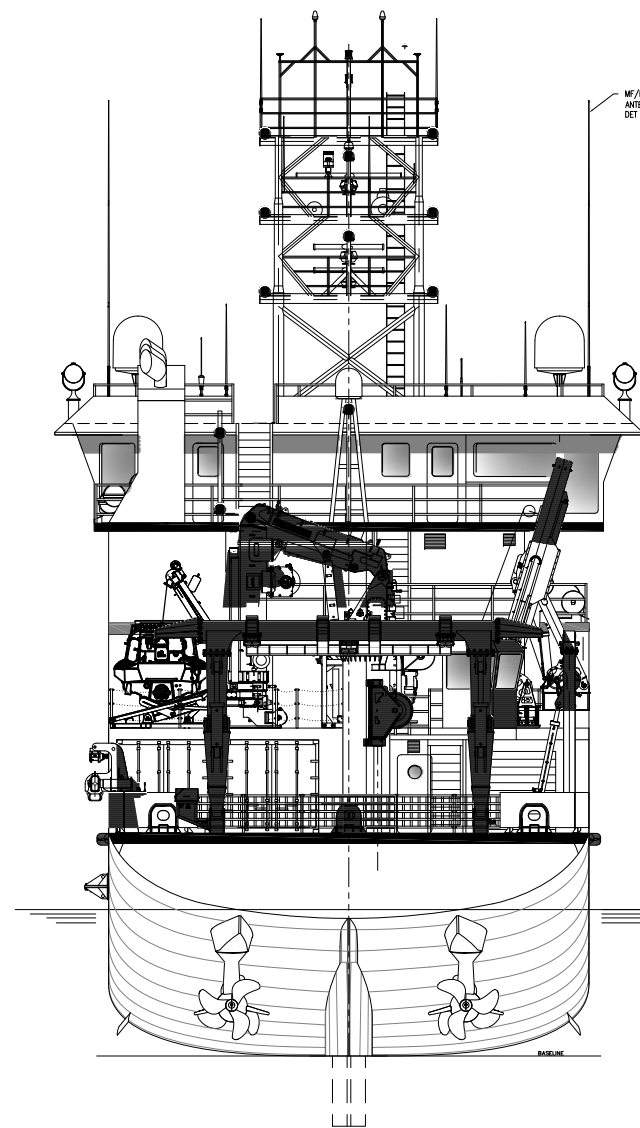
A

A



- AIR DRAFT
88'-4" ABL
- MAST 03 LEVEL
78'-6" ABL
- MAST 02 LEVEL
71'-9" ABL
- MAST 01 LEVEL
65'-0" ABL
- 04 LEVEL
54'-0" ABL
- 03 LEVEL
45'-6" ABL
- 02 LEVEL
37'-0" ABL
- 01 LEVEL
28'-0" ABL
- MAIN DECK
19'-0" ABL
- 1st PLATFORM
10'-0" ABL
- TANK TOP
6'-0" ABL

SECTION 5-6A
LOOKING AFT
1/8"=1'-0"



- AIR DRAFT
88'-4" ABL
- MAST 03 LEVEL
78'-6" ABL
- MAST 02 LEVEL
71'-9" ABL
- MAST 01 LEVEL
65'-0" ABL
- 04 LEVEL
54'-0" ABL
- 03 LEVEL
45'-6" ABL
- 02 LEVEL
37'-0" ABL
- 01 LEVEL
28'-0" ABL
- MAIN DECK
19'-0" ABL
- 1st PLATFORM
10'-0" ABL
- TANK TOP
6'-0" ABL

SECTION 5-3A
LOOKING FWD
1/8"=1'-0"

PROFESSIONAL ENGINEER STAMP

OREGON STATE UNIVERSITY
CORVALLIS, OR 97331
199'-6" REGIONAL CLASS RESEARCH VESSEL
GENERAL
ARRANGEMENT
SECTION - END VIEWS

SIZE D	FSCM CAGE NO. 7UTH5	DRAWING NO. 6096-070-001	REV J
SCALE: NONE		HULL #: 6096 6097 6098	SHEET 5 OF 10

8

7

6

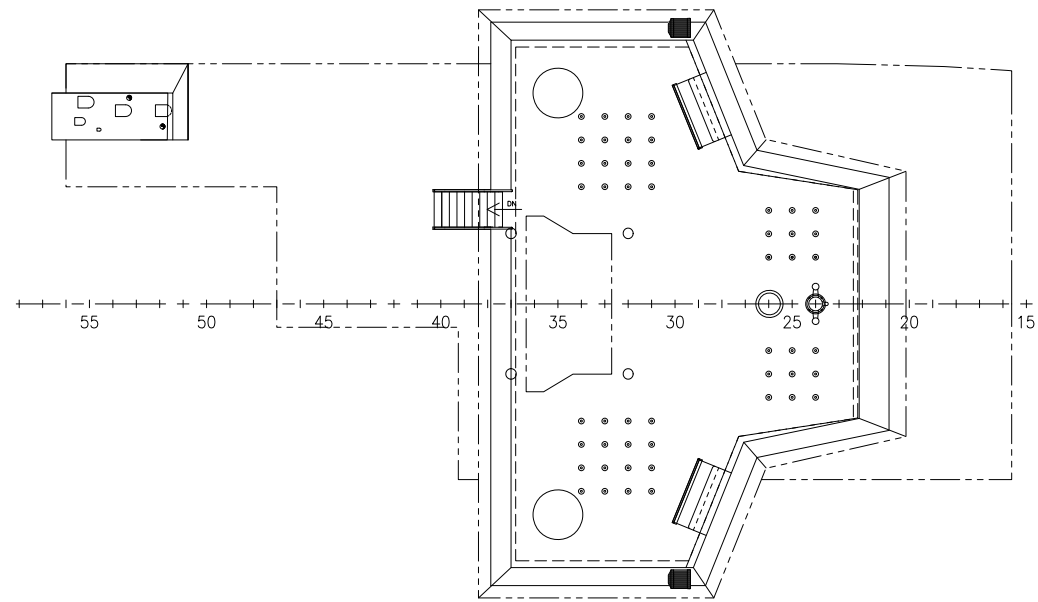
5

4

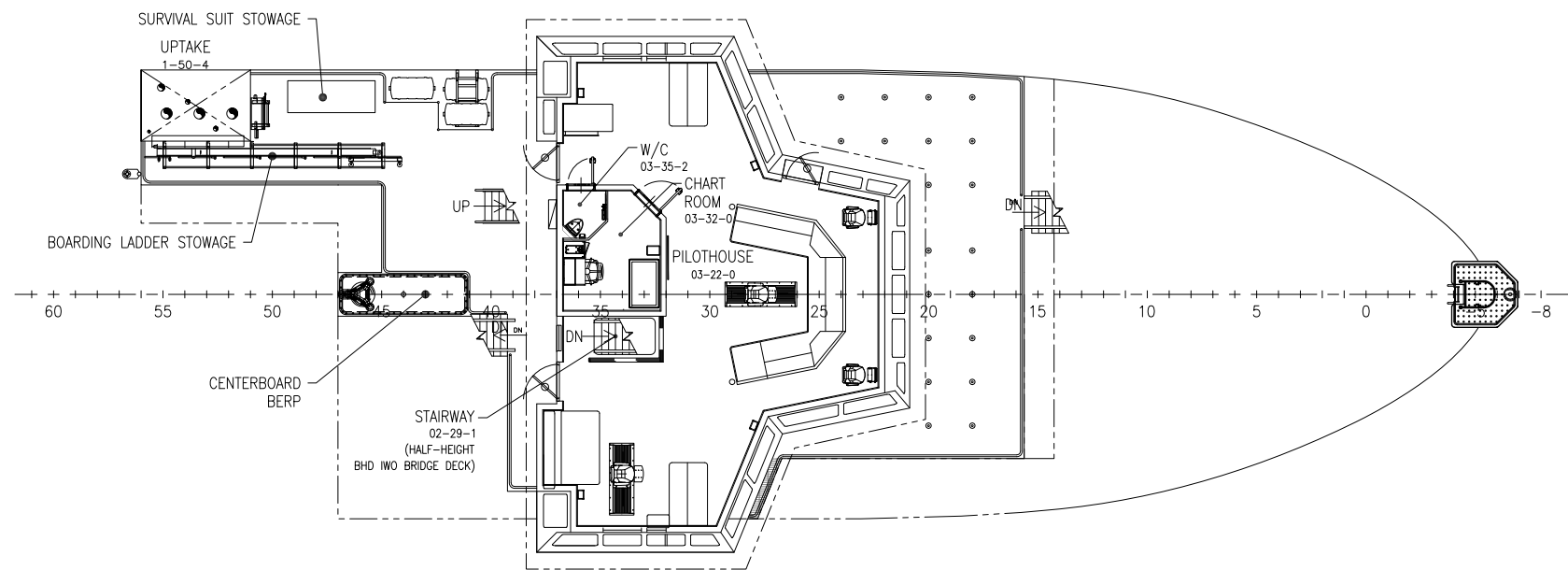
3

2

1



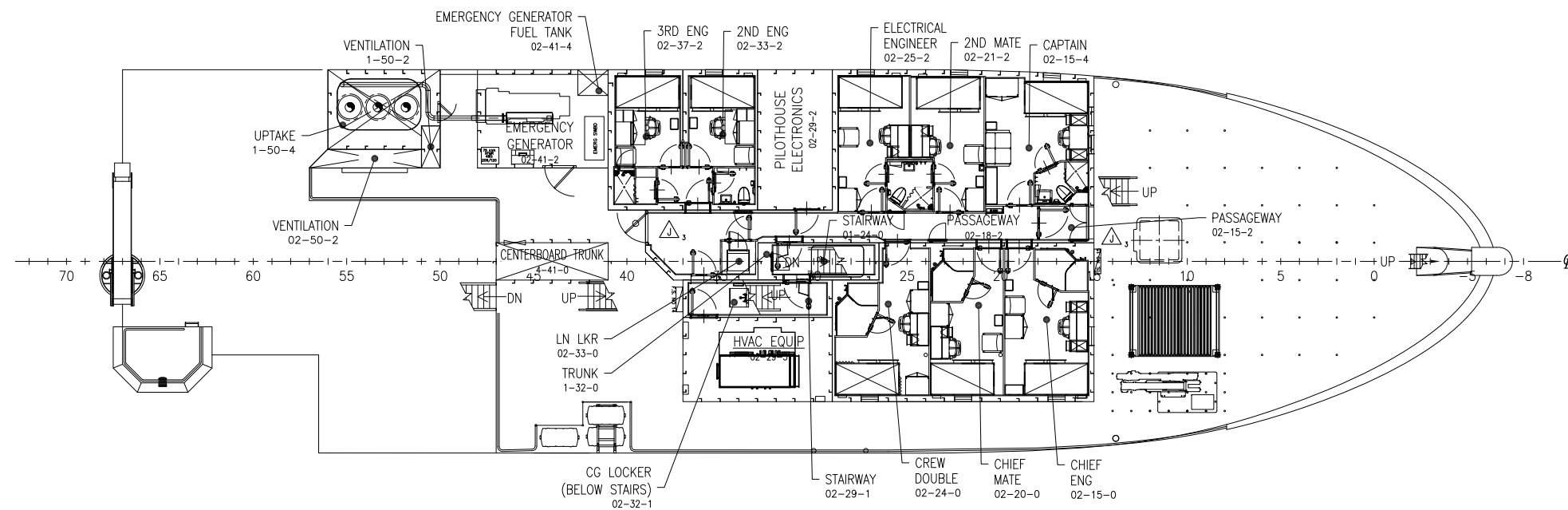
PLAN 6-5C
 04 LEVEL (PILOTHOUSE TOP)
 1/8"=1'-0"



PLAN 6-4A
 03 LEVEL (PILOTHOUSE)
 1/8"=1'-0"

PROFESSIONAL ENGINEER STAMP

OREGON STATE UNIVERSITY CORVALLIS, OR 97331			
199'-6" REGIONAL CLASS RESEARCH VESSEL			
GENERAL ARRANGEMENT			
PLAN VIEW - 02, 03, & 04 LEVEL			
SIZE D	FSCM CAGE NO. 7UTH5	DRAWING NO. 6096-070-001	REV J
SCALE: NONE	HULL #: 6096 6097 6098	SHEET 6 OF 10	

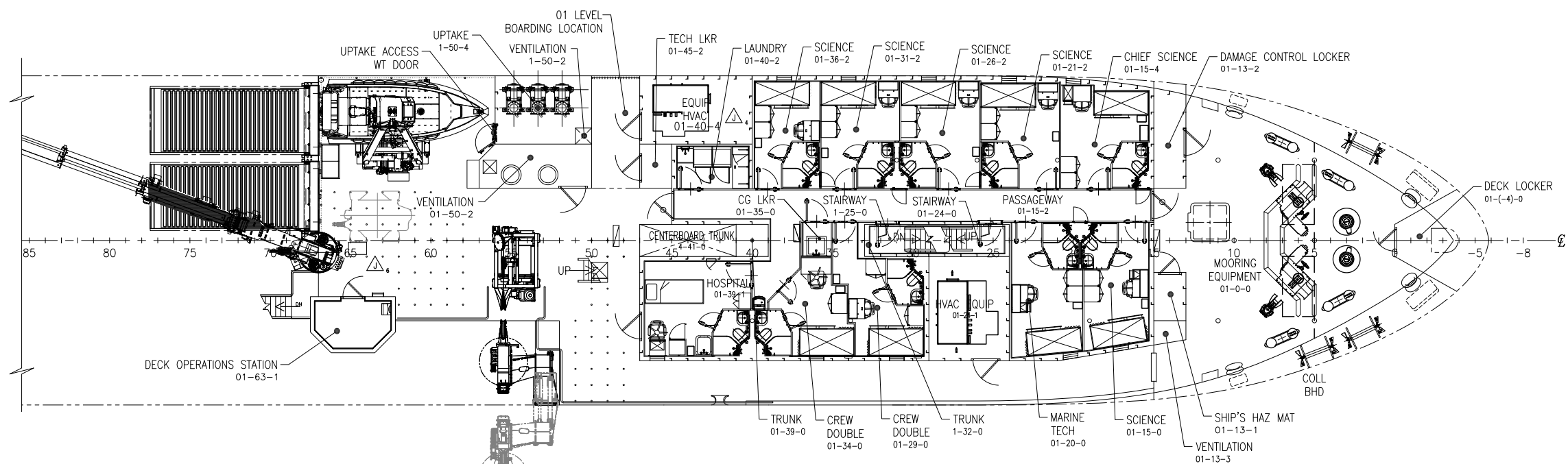


PLAN 7-4A
02 LEVEL
1/8" = 1'-0"

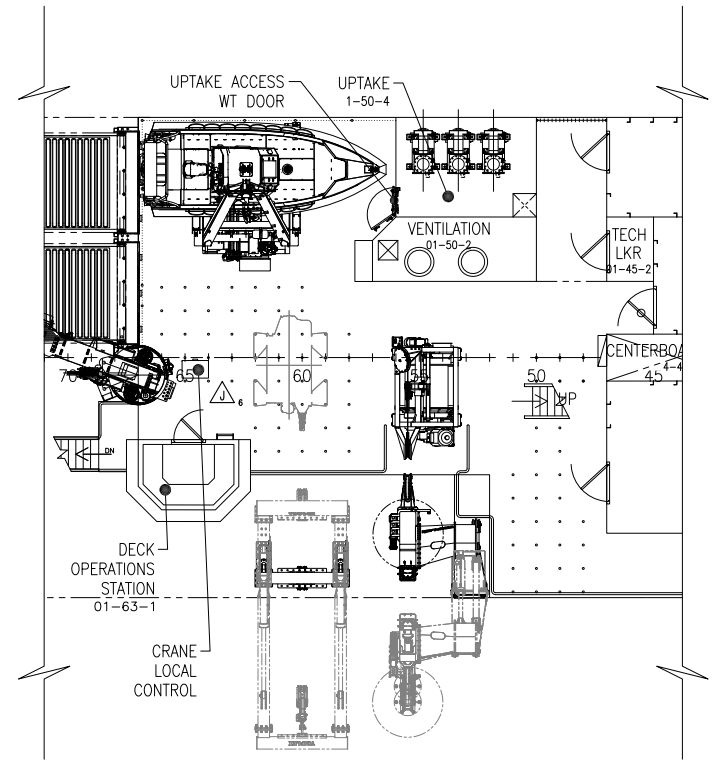
PROFESSIONAL ENGINEER STAMP

OREGON STATE UNIVERSITY
CORVALLIS, OR 97331
199'-6" REGIONAL CLASS RESEARCH VESSEL
GENERAL ARRANGEMENT
PLAN VIEW - 02, 03, & 04 LEVEL

SIZE D	FSCM CAGE NO. 7UTH5	DRAWING NO. 6096-070-001	REV J
SCALE: NONE	HULL #: 6096 6097 6098	SHEET 7 OF 10	



PLAN 8-4C
 01 LEVEL
 1/8"=1'-0"



PLAN 8-6A
 01 LEVEL, ALTERNATE WINCH DECK
 1/8"=1'-0"

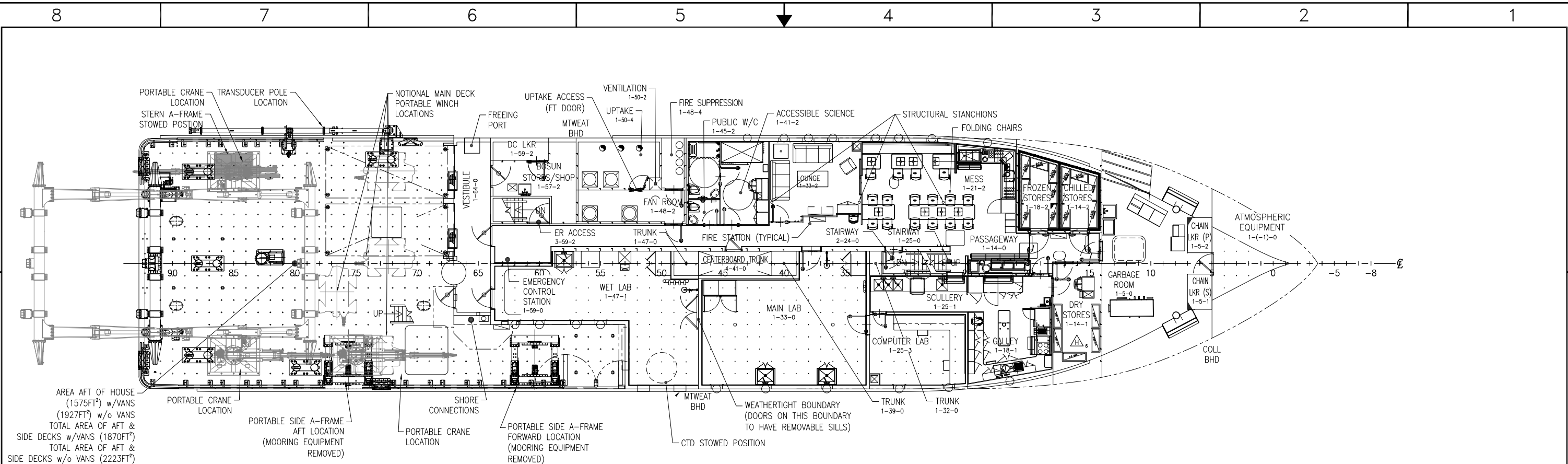
PROFESSIONAL ENGINEER STAMP

OREGON STATE UNIVERSITY
 CORVALLIS, OR 97331

199'-6" REGIONAL CLASS RESEARCH VESSEL

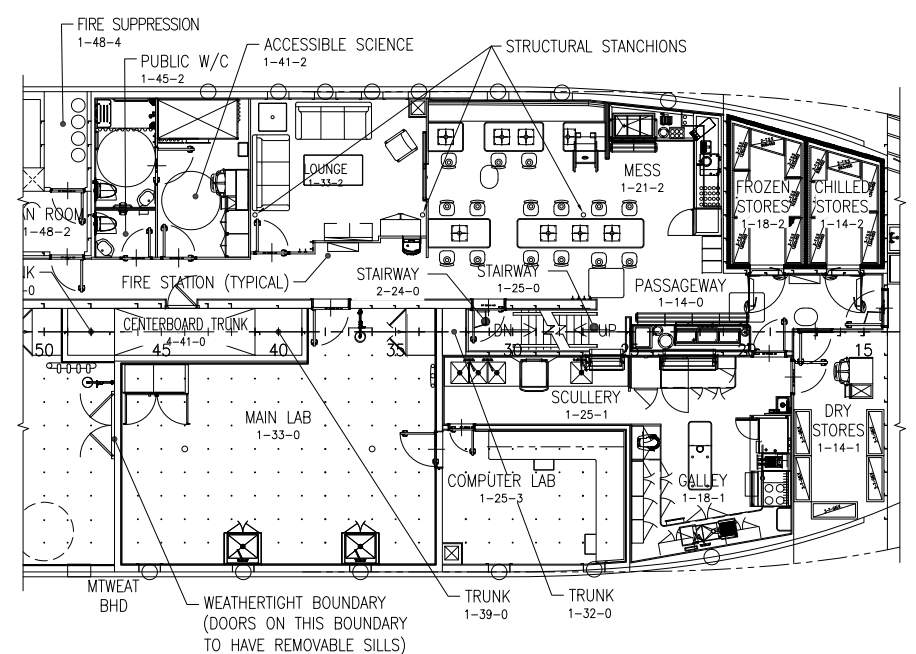
GENERAL ARRANGEMENT
 PLAN VIEW - MAIN DECK & 01 LEVEL

SIZE	FSCM CAGE NO.	DRAWING NO.	REV
D	7UTH5	6096-070-001	J
SCALE:	NONE	HULL #: 6096 6097 6098	SHEET 8 OF 10



AREA AFT OF HOUSE (1575FT²) w/VANS (1927FT²) w/o VANS
 TOTAL AREA OF AFT & SIDE DECKS w/VANS (1870FT²)
 TOTAL AREA OF AFT & SIDE DECKS w/o VANS (2223FT²)

PLAN 9-4C
 MAIN DECK
 HULL 6096 & 6098
 1/8"=1'-0"

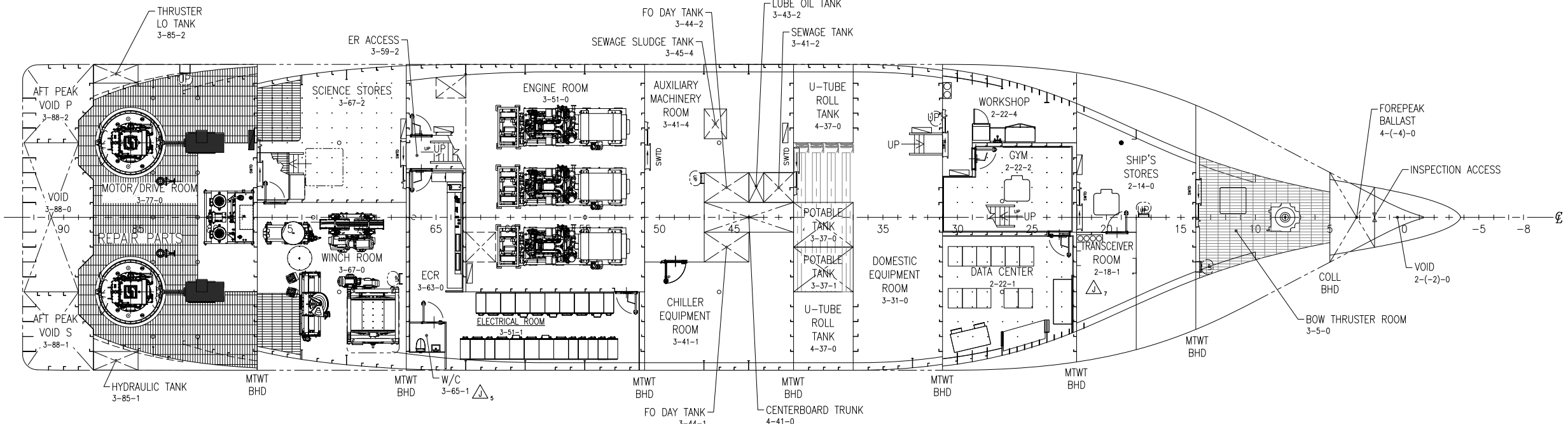


PLAN 9-4A
 MAIN DECK
 HULL 6097
 1/8"=1'-0"

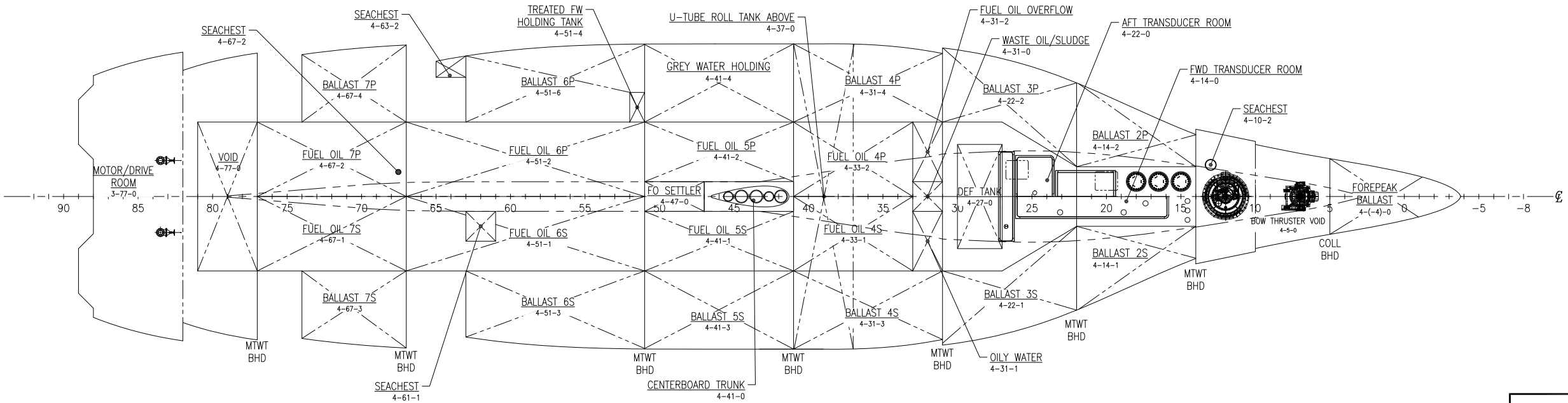
PROFESSIONAL ENGINEER STAMP

OREGON STATE UNIVERSITY
 CORVALLIS, OR 97331
 199'-6" REGIONAL CLASS RESEARCH VESSEL
 GENERAL ARRANGEMENT
 PLAN VIEW - MAIN DECK & 01 LEVEL

SIZE	FSCM CAGE NO.	DRAWING NO.	REV
D	7UTH5	6096-070-001	J
SCALE:	NONE	HULL #: 6096 6097 6098	SHEET 9 OF 10



PLAN 10-5C
 HOLD & 1ST PLATFORM DECKS
 1/8"=1'-0"



PLAN 10-5A
 TANK TOP
 1/8"=1'-0"

PROFESSIONAL ENGINEER STAMP

OREGON STATE UNIVERSITY CORVALLIS, OR 97331			
199'-6" REGIONAL CLASS RESEARCH VESSEL			
GENERAL ARRANGEMENT			
PLAN VIEW - TANK TOP, HOLD & 1ST PLATFORM			
SIZE D	FSCM CAGE NO. 7UTH5	DRAWING NO. 6096-070-001	REV J
SCALE: NONE	HULL #: 6096 6097 6098	SHEET 10 OF 10	