

SUBSTITUTION REQUEST FORM

TO: Oregon State University, Attn: Hanna Emerson

PROJECT: OSU Dairy Research Center

SPECIFIED ITEM:

07.41.13      5      2.02/A      Acceptable Manufacturers - Metal Roof Panels

Section      Page      Paragraph      Description

The undersigned requests consideration of the following:

PROPOSED SUBSTITUTION: Pac-Clad/Petersen Aluminum - Snap-Clad panel

Attached data includes product description, specifications, drawings, photographs, performance and test data adequate for evaluation of the request; applicable portions of the data are clearly identified.

Attached data also includes description of changes to Contract Documents which proposed substitution will require for its proper installation.

The undersigned states that the following paragraphs, unless modified on attachments, are correct:

1. The proposed substitution does not affect dimensions shown on Drawings.
2. The undersigned will pay for changes to the building design, including engineering design, detailing and construction costs caused by the requested substitution.
3. The proposed substitution will have no adverse effect on other trades, the construction schedule, or specified warranty requirements.
4. Maintenance and service parts will be locally available for the proposed substitution.

The undersigned further states that the function, appearance and quality of the Proposed Substitution are equivalent or superior to the Specified Item.

Submitted by:

Signature \_\_\_\_\_

Firm Harper Winn c/o Pac-Clad/Petersen Aluminum

Address 2327 W. Commodore Way  
Seattle, WA

Date 6/21/2020

Telephone Paul Amos - (503) 481-5867

For use by Design Consultant:

Accepted       Accepted as noted

Not Accepted       Received too late

By \_\_\_\_\_

Date \_\_\_\_\_

Remarks \_\_\_\_\_

See Addendum  
1 for Approval

Attachments:

- 1) Snap-Clad Product Data Sheet, 2) 3-Part Specification, 3) Color Chart offering, 4) Isometric Drawing, 5) UL Table, 6) Weather Tight Warranty Sample, 6) Finish Warranty sample.

# SNAP-CLAD PANEL

## MATERIALS

.032 aluminum

24 gauge steel

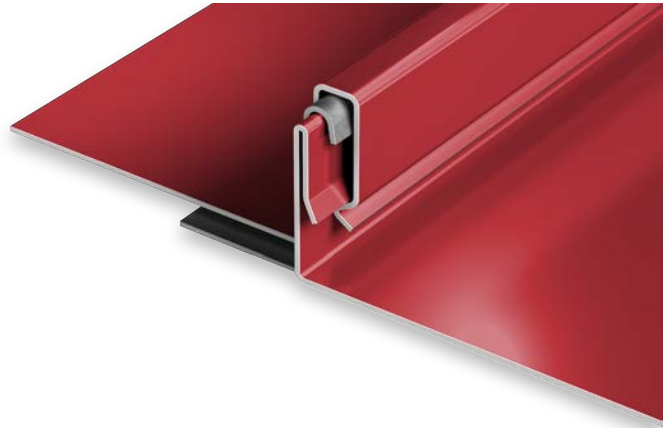
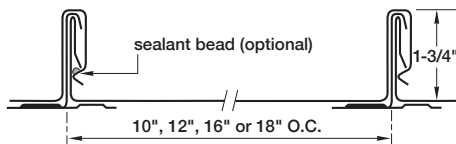
.040 aluminum

22 gauge steel

## SPECS

10", 12", 16" or 18" O.C. 1-3/4" High

UL-90



## PRODUCT FEATURES

- ▶ Architectural/structural panel
- ▶ Herr-Voss corrective leveled
- ▶ Factory-applied sealant available
- ▶ Continuous interlock
- ▶ Labor-saving one-piece design
- ▶ Stiffener beads upon request
- ▶ Striations upon request
- ▶ Factory eave notching available
- ▶ 30-year-non-prorated finish warranty
- ▶ Maximum factory-produced panel length is 64' (check w/factory for longer lengths)

- ▶ Weathertightness warranty available
- ▶ 43 stocked colors (24 gauge steel)
- ▶ 15 stocked colors (22 gauge steel)
- ▶ 36 stocked colors (.032 aluminum)
- ▶ 22 stocked colors (.040 aluminum)
- ▶ Panels available in Galvalume Plus

## UL CLASSIFICATION

- ▶ UL-580 Class 90 wind uplift
- ▶ UL-1897 wind uplift
- ▶ UL-790 Class A fire rated
- ▶ UL-263 fire resistance rated

- ▶ UL-2218 impact resistance rated
- ▶ UL-90 rated aluminum panel up to 16" O.C.

## ASTM TESTS

- ▶ ASTM E1592 tested
- ▶ ASTM E283/1680 tested
- ▶ ASTM E331/1646 tested

## FLORIDA BUILDING & MIAMI-DADE PRODUCT APPROVALS

Please refer to [pac-clad.com](http://pac-clad.com) or your local factory for specific product approval numbers for Snap-Clad.

Note: UL 90 is available on steel panels up to 18" on center, and on aluminum panels up to 16" on center.

**SECTION 07410**  
**PREFORMED METAL STANDING SEAM ROOFING**

**PART 1 - GENERAL**

**1.1 DESCRIPTION OF WORK**

- A. This section covers the pre-finished, pre-fabricated Architectural standing seam roof system. All metal trim, accessories, fasteners, insulation and sealants indicated on the drawings as part of this section.
- B. Drawings and general provisions of the Contract, including general and Supplementary Conditions and Division 01 Specifications, apply to this section.
- C. Related Work Specified Elsewhere
  - 1. Roof Deck structural steel, flat roof systems, perimeter edge systems. Roof hatches, firestopping not included in this section.

**1.2 SUMMARY**

- A. Section Includes
  - 1. Factory formed Standing Seam metal roof panels
- B. Related work specified elsewhere. (Note: select from the below or add appropriate sections)
  - 1. Section 05100 - Structural Steel
  - 2. Section 05200 or 05400 - Steel Joists
  - 3. Section 07600 - Flashing and Sheet Metal

**1.3 DEFINITIONS**

- A. Metal Roof Panel Assembly: Metal roof panels, attachment system components, miscellaneous metal framing, thermal, and accessories necessary for a complete weathertight roofing system.
- B. References:
  - 1. American Society for Testing and Materials (ASTM)
    - a. ASTM A 653: Steel Sheet, Zinc Coated by the Hot Dip Process
    - b. ASTM A 792: Steel Sheet, Aluminum-Zinc Alloy Coated by the Hot Dip Process
    - c. ASTM B 209: Aluminum and Aluminum Alloy Sheet and Plate
    - d. ASTM B370 Standard Specification for Copper Sheet and Strip for Building Construction
  - 2. Sheet Metal and Air Conditioning Contractors National Association (SMACNA)
    - a. SMACNA Architectural Sheet Metal Manual, 1993 edition
  - 3. American Iron and Steel Institute (AISI)
    - a. AISI Cold Formed Steel Design Manual
  - 4. Aluminum Association
    - a. Aluminum Design Manual
  - 5. Metal Construction Association

- a. Preformed metal Wall Guidelines
- 6. Code References
  - a. ASCE, Minimum Loads for Buildings and Other Structures
  - b. BOCA National Building Codes
  - c. UBC Uniform Building Code
  - d. SBC Standard Building Code

#### **1.4 QUALITY ASSURANCE**

- A. products establish a minimum of quality required.
- B. Manufacturer and erector shall demonstrate experience of a minimum of five (5) years in this type of project.
- C. Panels shall be factory-produced only. No portable, installer-owned or installer-rented machines will be permitted.

#### **1.5 SUBSTITUTIONS**

- A. The material, products and equipment specified in this section establish a standard for required function, dimension, appearance and quality to be met by any proposed substitution.

#### **1.6 SYSTEM DESCRIPTION**

- A. Material to comply with:
  - 1. ASTM A 653 Standard Specification for Steel Sheet, Zinc-Coated (Galvanized) or Zinc-Iron Alloy Coated (Galvannealed) by the Hot-Dip Process

#### **1.7 ROOF SYSTEM PERFORMANCE TESTING**

- A. General Performance: Metal roof panels shall comply with performance requirements without failure due to defective manufacture, fabrication, installation or other defects in construction.
- B. Roof System shall be designed to meet Standard Building Code Wind Load requirements.
- C. Panels to meet:
  - 1. Water Penetration: When tested per ASTM E-283/1680 and ASTM E-331/1646 there shall be no uncontrolled water penetration or air infiltration through the panel joints.
  - 2. Roof System shall be designed to meet a UL Class 90 wind uplift in accordance with UL standard 580 and panel system shall be ASTM 1592 Tested and approved
  - 3. UL 2218 - Impact Resistance rated.

#### **1.8 WARRANTIES**

- A. Weathertight warranty: Manufacturer's standard form in which manufacturer agrees to repair or replace standing seam metal roof panel assemblies that fail to remain weathertight, including leaks, within specified warranty period.
  - 1. Warranty Period: 20 Years from date of Substantial Completion
- B. Finish warranty: Manufacturer's standard form in which manufacturer agrees to repair finish or replace standing seam metal roof panels that show evidence of deterioration of factory-applied finish within specified warranty period.
  - 1. Exposed Panels Finish - deterioration includes the following:
    - a. Color fading more than 5 hunter units when tested according to ASTM D 2244
    - b. Chalking in excess of a No. 8 rating when tested according to ASTM D 4214
    - c. Cracking, checking, peeling or failure of a paint to adhere to a bare metal.
  - 2. Warranty Period: 20 Years from the date of substantial completion
- C. Applicator shall furnish written warranty for a two (2) year period from date of substantial completion of building covering repairs required to maintain roof and flashings in watertight condition.

## **1.9 SUBMITTALS**

- A. Furnish detailed drawings showing profile and gauge of exterior sheets, location and type of fasteners, location, gauges, shape and method of attachment of all trim locations and types of sealants, and any other details as may be required for a weather-tight installation.
- B. Provide finish samples of all colors specified.
- C. Shop drawings: Show fabrication and installation layouts of metal roof panels, metal wall panels or metal soffit panels, details of edge conditions, side-seam joints, panel profiles, corners, anchorages, trim, flashings, closures and accessories, and special details.  
Distinguish between factory and field-assembled work
- D. Coordination Drawings: Roof plans, drawn to scale, on which the following are shown and coordinated with each other, base don input from installer of the items involved:
  - 1. Roof panels and attachments
  - 2. Metal trusses, bracings and supports
  - 3. Roof-mounted items including snow guards and items mounted on roof curbs.
- E. LEED Submittals
  - 1. Product Test reports for Credit SS 7.2. For roof panels, indicating that the panels comply with Solar Reflective Index requirement
  - 2. Product data for Credit MR 4.1 and credit MR 4.2: Indicating the percentages by weight of postconsumer and preconsumer recycled content for products having recycled content.

## **1.10 DELIVERY, STORAGE AND HANDLING**

- A. Ordering: Comply with manufacturer's ordering instruction and lead time requirements to avoid construction delays.

- B. Deliver components, sheets, metal roof panels and other manufactured items so as not to be damaged or deformed. Package metal roof panels for protection during transportation and handling.
- C. Unload, store and erect metal roof panels in a manner to prevent bending, warping, twisting and surface damage.
- D. Stack metal roof panels on platforms or pallets, covered with suitable weathertight and ventilated covering. Store metal roof panels to ensure dryness. Do not store metal roof panels in contact with other materials that might cause staining, denting or other surface damage.
- E. Protect strippable protective coating on any metal coated product from exposure to sunlight and high humidity, except to the extent necessary for material installation.

### **1.11 PROJECT CONDITIONS**

- A. Weather Limitations: proceed with installation only when existing and forecasted weather conditions permit metal roof panel work to be performed.
- B. Field Measurements: Verify actual dimensions of construction contiguous with metal roof panels by field measurements before fabrication.

### **1.12 COORDINATION**

- A. Coordinate sizes and locations of roof curbs, equipment supports and roof penetrations with actual equipment provided.
- B. Coordinate metal roof panels with rain drainage work, flashing, trim and construction of decks, parapet walls and other adjoining work to provide a leakproof, secure and noncorrosive installation.

## **PART 2 - PRODUCTS**

### **2.1 PANEL DESIGN**

- A. General: Provide factory-formed metal roof panels designed to be installed by lapping and interconnecting raised side edges of adjacent panels with joint type indicated and mechanically attaching panels to supports using concealed clips in side laps. Include clips, cleats, pressure plates and accessories required for a weathertight installation.
- B. Roof panels shall be Snap Clad standing seam in 18" widths with 1 3/4" high seam.
- C. Panels to be produced without Factory supplied hot melt mastic in the seams.
- D. Panels to be produced With Striations.
- E. Panels to be designed for attachment with concealed fastener clips, spaced as required by the manufacturer to provide for both positive and negative design loads, while allowing for the expansion and contraction of the entire roof system resulting from variations in temperature.
- F. Forming: Use continuous end rolling method. No end laps on panels. No portable rollforming machines will be permitted on this project, no installer-owned or installer-rented machines will be permitted. It is the intent of the Architect to provide Factory-Manufactured panel systems only for this project.

## 2.2 ACCEPTABLE MANUFACTURERS

- A. This project is detailed around the roofing product of Petersen Aluminum Corporation , Snap Clad.

## 2.3 MATERIALS AND FINISHES

- A. Preformed roofing panels shall be fabricated of 24 GA Steel
- B. Color shall be Dark Bronze
- C. Finish shall be Kynar 500 or Hylar 5000 Fluorocarbon coating with a top side film thickness of 0.70 to 0.90 mil over a 0.25 to 0.3 mil prime coat to provide a total dry film thickness of 0.95 to 1.25 mil, to meet AAMA 621. Bottom side shall be coated with a primer with a dry film thickness of 0.25 mil. Finish shall conform to all tests for adhesions, flexibility and longevity as specified by Kynar 500 or Hylar 5000 finish supplier.
- D. If Strippable coating to be applied on the pre-finished panels to the top side to protect the finish during fabrication, shipping and handling, film shall be removed before installation.
- E. Trim: Trim shall be fabricated of the same material and finish to match the profile, and will be press broken in lengths of 10 to 12 feet. Trim shall be formed only by the manufacturer of their approved dealer. Trim to be erected in overlapped condition. Use lap strips only as indicated on drawings. Miter conditions shall be factory welded material to match the sheeting.
- F. Closures: use composition or metal profiled closures at the top of each elevation to close ends of the panels. Metal closures to be made in the same material and finish as face sheet.
- G. Fasteners: Fasteners shall be of type, material, size, corrosion resistance, holding power and other properties required to fasten miscellaneous framing members to substrates.
- H. Substrate shall be Plywood
- I. Roofing Underlayment
  1. On all surfaces to be covered with roofing material, furnish and install a 40 mil Peel & Stick membrane, required as outlined by metal panel manufacturer. Membrane to be a minimum of 40 mil thickness, smooth, non-granular, high temperature. **Basis of design:** Carlisle WIP 300 HT High Temperature Protection Self Adhering Roofing Underlayment. Other acceptable manufacturers include:
    - a. W.R Grace "Ice & Water Shield"
    - b. Interwrap Titanium PSU-30
    - c. Tamko TW Tile and Metal Underlayment
  2. Underlayment shall be laid in horizontal layers with joints lapped toward the eaves a minimum of 6, and well secured along laps and at ends as necessary to properly hold the felt in place. All underlayment shall be preserved unbroken and whole.
  3. Peel and Stick Underlayment shall lap all hips and ridges at least 12 to form double thickness and shall be lapped 6 over the metal of any valley or built-in gutters and shall be installed as required by the Standing Seam Panel Manufacturer to attain the desired 20 Year Weathertightness Warranty.

#### J. Sealants

1. Provide two-part polysulfide class B non-sag type for vertical and horizontal joints or
2. one part polysulfide not containing pitch or phenolic extenders or
3. Exterior grade silicone sealant recommended by roofing manufacturer or
4. One part non-sag, gun grade exterior type polyurethane recommended by the roofing manufacturer.

### **2.4 FABRICATION**

- A. Comply with dimensions, profile limitations, gauges and fabrication details shown and if not shown, provide manufacturer's standard product fabrication.
- B. Fabricate components of the system in factory, ready for field assembly.
- C. Fabricate components and assemble units to comply with fire performance requirements specified.
- D. Apply specified finishes in conformance with manufacturer's standard, and according to manufacturer's instructions.

## **PART 3 - EXECUTION**

### **3.1 INSPECTION**

- A. Examine alignment of structural steel and related supports, primary and secondary roof framing, solid roof sheathing, prior to installation.
- B. For the record, prepare written report, endorsed by installer, listing conditions detrimental to performance of the Work.
- C. Proceed with installation only after unsatisfactory conditions have been corrected.

### **3.2 FASTENERS**

- A. Secure units to supports
- B. Place fasteners as indicated in manufacturer's standards.

### **3.3 INSTALLATION**

- A. Panels shall be installed plumb and true in a proper alignment and in relation to the structural framing. The erector must have at least five years successful experience with similar applications.
- B. Install metal panels, fasteners, trim and related sealants in accordance with approved shop drawings and as may be required for a weather-tight installation.
- C. Remove all strippable coating and provide a dry-wipe down cleaning of the panels as they are erected.

### **3.4 DAMAGED MATERIAL**

- A. Upon determination of responsibility, repair or replace damaged metal panels and trim to the satisfaction of the Architect and Owner.

END OF SECTION



\$ FOREST GREEN



\$ HARTFORD GREEN



▲★\$ MILITARY BLUE



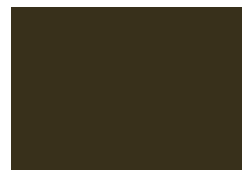
\$ BERKSHIRE BLUE



▲★\$ SLATE BLUE



\$ AWARD BLUE



▲\$ AGED BRONZE



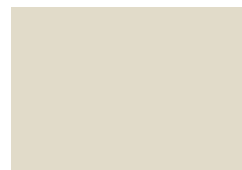
▲★\$ MEDIUM BRONZE



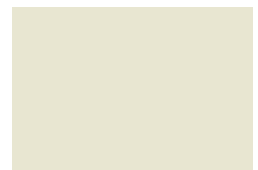
▲★\$ CARDINAL RED



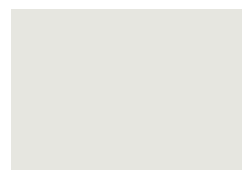
▲★\$ COLONIAL RED



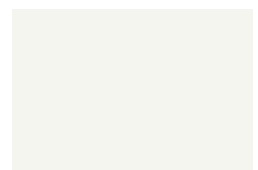
▲★\$ SANDSTONE



▲★\$ ALMOND



▲★\$ STONE WHITE

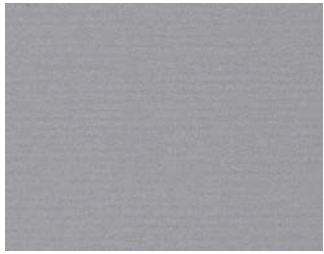


▲★\$ BONE WHITE

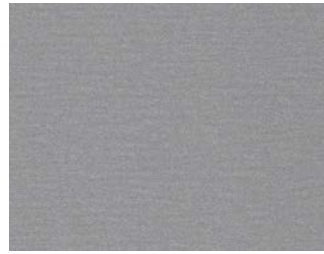
# Color Guide

[PAC-CLAD.COM](http://PAC-CLAD.COM)

# Premium Colors



●▲★\$ ANODIC CLEAR



●▲★\$ SILVERSMITH



●▲★\$ SILVER



●▲★\$ CHAMPAGNE



●▲★\$ ZINC



●▲★\$ WEATHERED ZINC



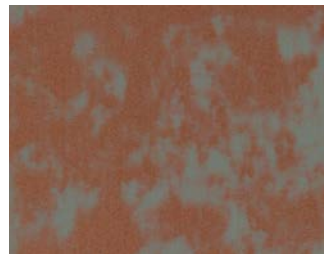
●▲★\$ COPPER PENNY



●▲★\$ AGED COPPER



●▲★\$ WEATHERED STEEL



●▲★\$ WEATHERED COPPER

Kynar 500® or Hylar 5000® pre-finished steel and aluminum for roofing, curtainwall and storefront applications.



● Metallic Colors   ★ ENERGY STAR® Colors   \$ Pricing  
▲ Cool Colors   🏰 Premium Colors

See back for color availability chart.

# Standard Colors



▲★\$ PATINA GREEN



▲★\$ TEAL



▲★\$ HEMLOCK GREEN



\$ FOREST GREEN



\$ HARTFORD GREEN



▲★\$ EVERGREEN



▲★\$ HUNTER GREEN



▲★\$ ARCADIA GREEN



▲★\$ MILITARY BLUE



\$ BERKSHIRE BLUE



▲\$ GRAPHITE



▲★\$ CHARCOAL



\$ INTERSTATE BLUE



▲★\$ SLATE BLUE



\$ AWARD BLUE



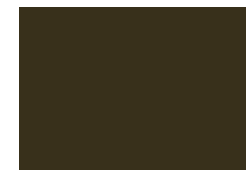
\$ MATTE BLACK



▲★\$ DARK BRONZE



▲\$ BURNISHED SLATE



▲\$ AGED BRONZE



▲★\$ MEDIUM BRONZE



▲★\$ MANSARD BROWN



\$ BURGUNDY



▲★\$ TERRA COTTA



▲★\$ CARDINAL RED



▲★\$ COLONIAL RED



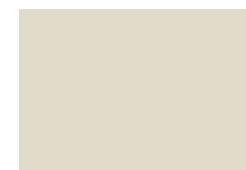
\$ MIDNIGHT BRONZE



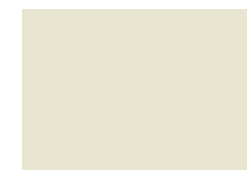
▲★\$ MUSKET GRAY



▲★\$ SIERRA TAN



▲★\$ SANDSTONE



▲★\$ ALMOND



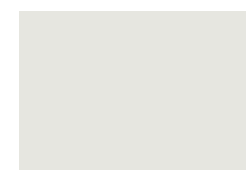
▲★\$ SLATE GRAY



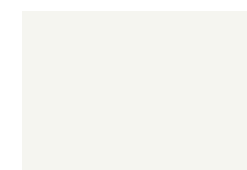
▲★\$ CITYSCAPE



▲★\$ GRANITE



▲★\$ STONE WHITE



▲★\$ BONE WHITE



**PAC-CLAD**  
P E T E R S E N

HQ: 800 PAC CLAD   TX: 800 441 8661   MD: 800 344 1400  
AZ: 833 750 1935   GA: 800 272 4482   MN: 877 571 2025

[PAC-CLAD.COM](http://PAC-CLAD.COM)

# PAC-CLAD® Color Availability

PAC-CLAD STANDARD COLORS	REFLECTIVITY	EMISSIVITY	3 YEAR EXPOSURE	SRI	STEEL		ALUMINUM				ENERGY STAR
					24 GA.	22 GA.	.032	.040	.050	.063	
AGED BRONZE	0.28	0.86	N/A	27	✓						
ALMOND	0.53	0.87	0.52	62	✓	✓	✓	✓	✓		★
ARCADIA GREEN	0.30	0.88	0.30	31	✓		✓				★
AWARD BLUE	0.21	0.86	0.20	18	✓		✓		✓		
BERKSHIRE BLUE*	0.26	0.87	0.25	25	✓						
BLACK ALUMINUM**	0.20	0.86	0.19	17			✓	✓	✓	✓	
MATTE BLACK STEEL**	0.23	0.87	0.22	21	✓	✓					
BONE WHITE	0.65	0.86	0.64	78	✓	✓	✓	✓	✓	✓	★
BURGUNDY	0.23	0.87	0.22	21	✓		✓		✓		
BURNISHED SLATE	0.29	0.85	N/A	28	✓						
CARDINAL RED	0.36	0.86	0.36	38	✓		✓		✓		★
CHARCOAL	0.26	0.87	0.26	25	✓		✓		✓		★
CITYSCAPE	0.43	0.87	0.43	48	✓	✓	✓	✓	✓		★
COLONIAL RED	0.32	0.88	0.32	34	✓		✓	✓	✓		★
DARK BRONZE	0.26	0.88	0.26	26	✓	✓	✓	✓	✓	✓	★
EVERGREEN	0.25	0.86	0.23	24	✓		✓				★
FOREST GREEN	0.10	0.87	0.10	5	✓	✓	✓	✓	✓		
GRANITE*	0.36	0.87	0.36	39	✓	✓	✓	✓	✓		★
GRAPHITE	0.27	0.86	N/A	26	✓						
HARTFORD GREEN	0.09	0.88	0.09	4	✓		✓	✓	✓		
HEMLOCK GREEN	0.30	0.85	0.31	30	✓		✓		✓		★
HUNTER GREEN	0.26	0.86	0.25	25	✓		✓				★
INTERSTATE BLUE	0.13	0.87	0.12	8	✓		✓		✓		
MANSARD BROWN	0.28	0.85	0.28	27	✓	✓	✓	✓	✓		★
MEDIUM BRONZE	0.25	0.88	0.24	24	✓	✓	✓	✓	✓	✓	★
MIDNIGHT BRONZE	0.06	0.88	N/A	0	✓			✓			
MILITARY BLUE	0.29	0.87	0.28	30	✓		✓				★
MUSKET GRAY	0.28	0.87	0.27	28	✓	✓	✓		✓		★
PATINA GREEN	0.34	0.86	0.33	35	✓		✓				★
SANDSTONE	0.46	0.87	0.46	52	✓	✓	✓	✓	✓	✓	★
SIERRA TAN	0.31	0.87	0.31	32	✓	✓	✓	✓	✓		★
SLATE BLUE	0.23	0.87	0.22	21	✓		✓				★
SLATE GRAY	0.35	0.88	0.34	38	✓	✓	✓	✓	✓		★
STONE WHITE	0.67	0.85	0.65	80	✓	✓	✓	✓	✓	✓	★
TEAL	0.26	0.87	0.26	25	✓		✓				★
TERRA COTTA	0.36	0.88	0.35	39	✓		✓		✓		★
<b>PAC-CLAD PREMIUM COLORS</b>											
AGED COPPER	0.25	0.87	0.24	24	✓		✓		✓		★
ANODIC CLEAR	0.55	0.80	N/A	62				✓			
CHAMPAGNE	0.40	0.82	0.36	42	✓		✓	✓	✓		★
COPPER PENNY	0.45	0.87	0.44	51	✓		✓	✓	✓		★
SILVER	0.48	0.81	0.46	53	✓	✓	✓	✓	✓		★
SILVERSMITH	0.52	0.81	N/A	58				✓			
WEATHERED COPPER	0.45	0.88	N/A	51	✓						
WEATHERED STEEL	0.32	0.89	N/A	34	✓						
WEATHERED ZINC	0.25	0.82	0.24	22	✓	✓	✓		✓		★
ZINC	0.30	0.88	0.29	31	✓		✓	✓	✓		★
<b>CLEAR-COAT ACRYLIC FINISH (NON-KYNAR)</b>											
GALVALUME PLUS	0.68	0.14	0.55	57	✓	✓					★

PAC-CLAD Premium finishes are available from stock at a moderate extra cost. PAC-CLAD Copper Penny is a Non-Weathering finish. Solar Reflectance Index calculated according to ASTM E-1980.

\*Low Gloss/Low Sheen, 70% PVDF finish \*\* Appearance differs for Black Aluminum and Matte Black Steel

## ENERGY STAR PERFORMANCE CRITERIA:

Emissivity uses ASTM C1371 Reflectivity uses ASTM C1549.

## TECHNICAL DATA FOR KYNAR 500/HYLAR 5000 COATING:

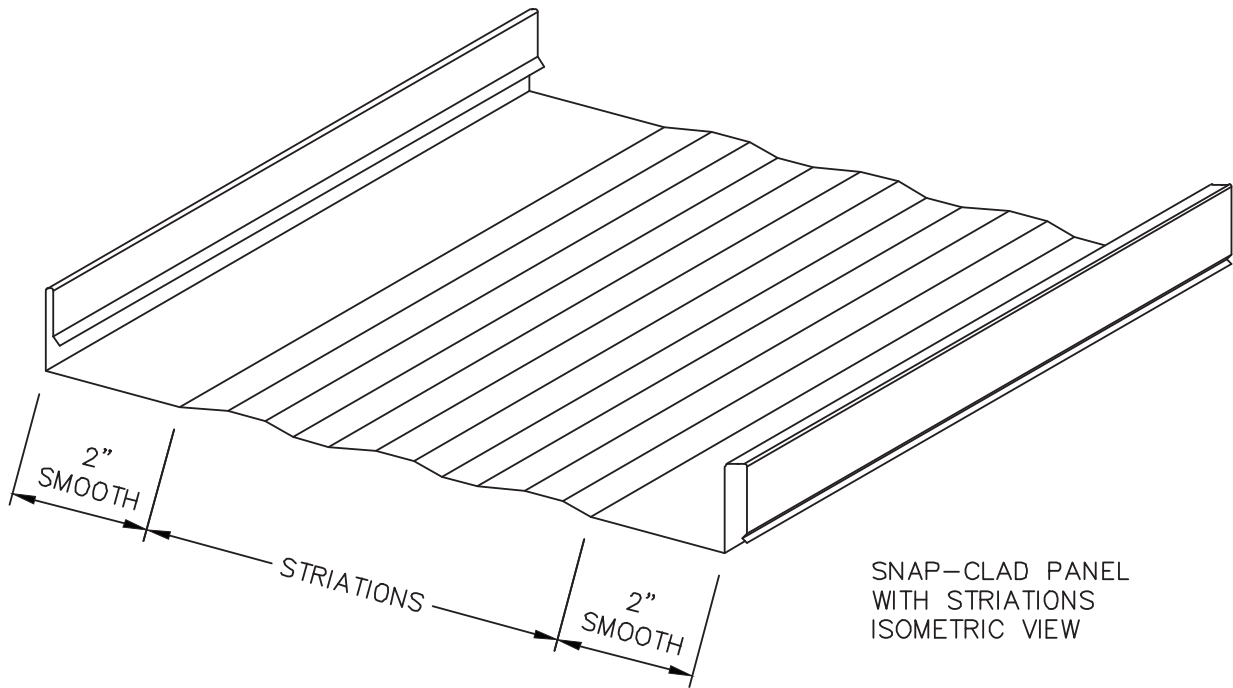
- ▶ South Florida Exposure: Color (ASTM D 2244) - No more than 5ΔE Hunter units at 20 years; Chalk (ASTM D 4214) - Rating no less than 8 at 20 years; Film integrity - 20 years.
- ▶ Accelerated Weathering (ASTM D 4587, ASTM G 154): 5000 Hours; Chalk, per ASTM D 4214, rating of 6 or better; Color, per ASTM D 2244, < 5ΔE (Hunter Units) color change.

- ▶ Humidity Resistance (ASTM D 2247): Galvalume or HDG, 100% RH, 2000 hours - No field blisters; Aluminum, 100% RH, 3000 hours - No field blisters
- ▶ Salt Spray Resistance (ASTM B 117): Aluminum, 3000 hours, Galvalume or HDG, 1000 hours - Creep from scribe no more than 1/16", no field blisters
- ▶ Chemical/Acid Pollution Resistance (ASTM D 1308): Pass
- ▶ T-Bend (ASTM D 4145): 1T - 3T with no loss of adhesion
- ▶ Pencil hardness (ASTM D 3363): HB - 2H
- ▶ Specular Gloss (ASTM D 523) @ 60 degrees: Typical - 20 - 35

- ▶ Abrasion Resistance (ASTM D 968): 67 +/- 10 liters
- ▶ Cross Hatch Adhesion (ASTM D 3359): No loss of adhesion
- ▶ Reverse Impact (ASTM D 2794): Galvalume or HDG, 2x metal thickness inch-pounds, no loss of adhesion; Aluminum, 1.5x metal thickness inch-pounds, no loss of adhesion
- ▶ Flame Test (ASTM E 84): Class A Coating

# PANEL CONDITIONS: W/ STRIATIONS

SNAP-CLAD



SNAP-CLAD PANEL  
WITH STRIATIONS  
ISOMETRIC VIEW

**PETERSEN ALUMINUM CORPORATION**

[PAC-CLAD.COM](http://PAC-CLAD.COM) [SALES@PETERSENMAIL.COM](mailto:SALES@PETERSENMAIL.COM)

HQ: 1005 Tonne Road  
Elk Grove Village, IL 60007  
P: 800-PAC-CLAD  
F: 800-722-7150

9060 Junction Drive  
Annapolis Junction, MD 20701  
P: 800-344-1400  
F: 301-953-7627

10551 PAC Road  
Tyler, TX 75707  
P: 800-441-8661  
F: 903-581-8592

102 Northpoint Parkway  
Acworth, GA 30102  
P: 800-272-4482  
F: 770-420-2533

1800 S. 7th Ave., Suite 130  
Phoenix, AZ 85007  
P: 833-750-1935  
F: 602-254-6504

1885 Station Parkway NW, Suite B  
Andover, MN 55304  
P: 877-571-2025  
F: 866-901-2935

## Substrates

Gauge	Width	Open Frame Purlins	5/8" Plywood	Rigid Insulation Over 22 GA Steel Deck With Bearing Plates
22 GA	10"	UL 261 (5'-0")		
	18", 16", 12", 10"			UL 508A (3'-0")
	18", 16", 12", 10"	UL 255 (4'-0")	UL 343 (3'-0")	UL 303 (4'-0")
24 GA	10"	UL 261 (4'-0")		
	12", 10"	UL 254 (4'-0")		
	18", 16", 12", 10"	UL 255 (4'-0")	UL 343 (3'-0")	UL 303 (4'-0")
	18", 16", 12", 10"			UL 508A (3'-0")
0.032	10"	UL 261 (3'-0")		
	16", 12", 10"			UL 303 (1'-6")
	16", 12", 10"		UL 508 (1'-6")	UL 508A (1'-6")
0.040	10"	UL 261 (3'-0")		
	16", 12", 10"			UL 303 (1'-6")
	16", 12", 10"		UL 508 (1'-6")	UL 508A (1'-6")
16 Oz. Copper	16", 12", 10"		UL 614 (2'-0")	

- 1 Contact Petersen Aluminum Corporation for complete UL construction assemblies.
- 2 For complete information regarding appropriate purlin spacing, contact Petersen Aluminum Corporation directly.
- 3 Insulation thicknesses varies between 1" and 4-1/2" according to R-value desired. Refer to UL Roofing Materials directly.

Job Name \_\_\_\_\_ Contractor \_\_\_\_\_

Date \_\_\_\_\_ Notes \_\_\_\_\_

## **PAC-CLAD® 30 Year Limited Warranty**

Owner:  
Address:  
Contractor: \_\_\_\_\_ of \_\_\_\_\_  
Customer:  
Invoice Num. & Date:  
Date Warranty Begins: \_\_\_\_\_ Date Warranty Ends: \_\_\_\_\_  
Job Name:

### **PART I**

PETERSEN ALUMINUM CORPORATION (hereinafter referred to as "PAC") hereby issues the following limited warranty to the above referenced owner (hereinafter referred to as OWNER) exclusively. Subject to the terms and conditions listed below, PAC warrants that upon delivery its standard color Fluropon® coating (hereinafter referred to as the "COATING") applied to aluminum, G-90 hot-dipped galvanized steel or AZ50 zinc-aluminum alloy steel sheet and coil that has been fabricated, roll-formed or otherwise manufactured, within one year from the date of shipment thereof by PAC, and sold for use as painted roofing panels, fascia, mansard, soffit or other building components, will for a period of thirty (30) years [ten (10) years in the case of Award Blue and Cardinal Red.] from the project completion date listed above (hereinafter referred to as the "WARRANTY PERIOD"), meet the following quality standards:

- A. WILL NOT chalk in excess of ASTM D-4214 number eight (8) rating.
- B. WILL NOT change color more than five (5.0) Hunter ΔE units [(7.0) Hunter ΔE units in the case of Award Blue and Cardinal Red.] as determined by ASTM method D-2244-02 after removal of external deposits and chalk. It is understood by all the parties herein named, that fading or color change may not be uniform in appearance between surfaces not equally exposed to the sun and other weathering elements. This paragraph is not applicable in its entirety for all PAC-CLAD® metallic colors or custom Fluropon® Classic or Fluropon® Classic II colors.
- C. WILL NOT crack, check, peel or otherwise lose adhesion. The terms, crack, check and peel, used herein shall not include minute fracturing of the COATING incurred during proper fabrication. In addition loss of adhesion of the COATING as a result of substrate corrosion, however caused, and either from the front side or the backside of the substrate is specifically excluded from this warranty.

The following additional terms, conditions and other limitations are also included as part of this warranty:

### **PART II**

- 1.) This warranty and all terms, conditions and exclusions contained herein apply to PAC's COATING only. In regards to either the aluminum, G-90 hot-dipped galvanized steel or AZ50 zinc-aluminum alloy steel substrates to which the COATING has been applied or any solar panels/solar film applied to the COATING, PAC makes no representations or other warranties whatsoever. ALL BASE METAL SUBSTRATES AND SOLAR PANEL/FILMS ARE SOLD AS IS. In addition, PAC makes no representations or otherwise warrants the weather tightness of the roofing panels, fascia, mansard, soffit or other building components referred to in Part I. Further, PAC is expressly to be held harmless for failures, leaks or consequential damages caused by the roofing panels, fascia, mansard, soffit or other building components.
- 2.) This warranty applies to the COATING installed on structures within the continental United States that have been exposed to normal weather and atmospheric conditions only. Failure of the COATING caused by exposure to harmful fumes, cement dust, falling sand, animal waste or its decomposition by-products, dust particles and other foreign substances in the air, chemical fumes, chemical sprays and installations with a proximity of less than a one-half mile radius from a seacoast, saltwater or other brackish water environment are all excluded from this warranty. In addition, this warranty does not apply to failure of the COATING caused by or as a result of fire, other accident or casualty, vandalism, radiation, falling objects, explosions, riots or acts of God. Also, the warranty is void for areas where materials / items such as snow guards, solar panels or solar films are attached to the COATING. In addition, the warranty is void if the COATING is perforated. Finally, this warranty does not apply to failure of the COATING caused by the following: damage incurred during shipment, improper storage, improper fabrication or improper installation, improper seaming techniques, surface scratches or other abrasions however caused, damage caused by contact with areas subject to water run-off from lead, copper or other incompatible flashings or areas in metallic contact with lead, copper or other dissimilar metals, damage caused by failure to provide free drainage of water, including internal condensation from overlaps, and all other surfaces of the roofing panels, fascia, mansard, soffit or other building components, damage caused by failure to remove debris or other accumulations of foreign substances from the surface of the roofing panels, fascia, mansard, soffit or other building components, damage caused by contact with green or wet lumber, damage caused by contact with or close proximity to damp underlayment, insulation, soil, vegetation or other corrosive materials and/or damage caused by use of unsuitable fasteners or flashings. Selection of suitable long-lasting fasteners as well as appropriate flashings rests solely with the OWNER.
- 3.) This warranty does not apply to failure of the COATING in the following additional circumstances: forming where the bend is tighter than 2T, forming which involves severe reverse bending, or which subjects the COATING to alternate compression and tension, roofing applications where the slope of the roof, or sections of the roof, are flatter than ½": 12", applications where the COATING is sheltered from periodic washing by natural rainfall such as underside eaves and soffits, or discoloration or damage to the COATING caused by failure to remove factory applied protective strippable film (where applicable).

### **PART III**

- 1.) All claims filed under the provisions of this warranty must be presented by the OWNER to PAC, in writing, during the WARRANTY PERIOD and not more than thirty (30) days after discovery of any apparent defects, delivered by Registered or Certified mail to the following address:

Petersen Aluminum Corp.  
1005 Tonne Rd.  
Elk Grove Village, IL 60007  
ATTN: Warranty Claims

In submitting a claim under the provisions of this warranty, it is the responsibility of the OWNER to provide adequate documentation of the COATING involved in the claim, including date of installation, name of installer and contractor (if different), PAC order number, PAC invoice number and proof of payment to PAC for all such materials included as part of the claim. In no event will any claims be honored under the provisions of this warranty if invoices from PAC have not been previously satisfied in full within PAC's standard credit terms. OWNER further agrees to allow PAC to inspect all such documentation.

- 2.) After receipt of claim from owner, PAC will be given a reasonable opportunity to examine or cause to be examined, the COATING claimed to be non-conforming. OWNER shall further use reasonable care to protect any disputed material until PAC has had time to conduct its own inspection and make disposition.
- 3.) If after inspection it is determined by PAC that the claim is valid under the terms of this warranty, then PAC agrees, at its option, to refinish, repair or replace the defective COATING on the following basis:
  - a. If the COATING is to be refinished then PAC shall bear the cost of materials and labor reasonably necessary to repaint those areas showing failure. Further, PAC shall use normal painting practices to apply a Kynar 500® or Hylar 5000® coating system or other suitable alternative. The choice of appropriate coating system to use rests exclusively with PAC.
  - b. In the case of repair or replacement of the defective COATING, PAC shall at its option, and F.O.B. PAC plant, furnish either replacement components or sufficient sheet to fabricate replacement components, for those areas of the building where the COATING is determined to be defective. However, in no event shall PAC be liable for the cost of labor expended by others on any nonconforming material or for any special, indirect or consequential damages to anyone by reason of the fact that such material may have been nonconforming.

This warranty shall apply to the part or parts of the COATING refinished, repaired or replaced by PAC, but only for the unexpired portion of the WARRANTY PERIOD applicable to the original COATING only. It will be at the discretion of PAC what appropriate measure shall be taken; that is whether the COATING should be refinished, repaired or replaced. However, in lieu of any of the foregoing alternatives PAC also reserves the right to refund to the OWNER a cash amount equal to PAC's original invoiced price of the nonconforming material as satisfaction in full for all claims under this warranty. In addition, should repair or replacement of the nonconforming materials necessitate the removal of solar panels/solar films PAC assumes no responsibility for either the original, replacement or reinstallation costs of these solar panels/solar films. At no time does this warranty confer upon the OWNER the right to refinish, repair or replace those areas of COATING under dispute without written notice and agreement by a duly authorized officer of PAC. Any unauthorized refinish, repair or replacement of the COATING shall result in this warranty becoming null and void.

#### **PART IV**

- 1.) Except as provided herein, PAC makes no warranty or guarantee, express or implied, including without limitation, WARRANTIES OF FITNESS AND MERCHANTABILITY. Further, OWNER acknowledges that PAC shall have no other liability to any other person, firm, or corporation with respect thereto, including, without limitations, any liability for indirect, consequential or resultant damages, whether based upon breach of warranty or negligence.
- 2.) PAC extends this warranty solely to the OWNER listed herein. This warranty is non-transferable and non-assignable.
- 3.) This warranty shall be subject to and shall be enforced and construed according to the laws of the State of Illinois. Any legal action to enforce or construe any portion of this warranty shall be brought in a Court of competent jurisdiction in Cook County, Illinois.
- 4.) If any provision of this warranty shall be held by any Court of competent jurisdiction to be invalid or unenforceable in whole or in part, the remaining provisions of this warranty shall be effective to the same extent as if such invalid or unenforceable provision had never been contained herein.
- 5.) PAC reserves the right to terminate this warranty at any time upon thirty (30) day written notice. However termination shall not affect the rights accruing to the OWNER prior to such termination.
- 6.) Both the supplier of the PAC COATING and the applicator thereof have made certain warranties to PAC which are similar to the warranties made by PAC to the OWNER under this limited warranty. In the event that the supplier and or applicator (or its successors or assigns) of the coating can no longer perform, or is not willing to perform, its obligations to PAC, then the limited warranty contained herein shall be of no further force or effect.
- 7.) The terms hereof shall constitute the entire agreement and understanding of the parties hereto respecting the subject matter hereof and no provision or statement contained at any time in any other writing, including without limitation, OWNERS, customers and/or contractors purchase orders, architects specifications or PAC's acceptance forms shall be effective to change the provisions hereof, unless contained in a subsequent agreement, in writing, signed by both the OWNER and PAC expressly stating that it is intended thereby to modify or supplement this instrument.

#### **PETERSEN ALUMINUM CORPORATION**

By: \_\_\_\_\_

\*\*\* *Not valid without Authorized Signature* \*\*\*

Date:

Fluropon® is a registered trademark of The Valspar Corporation  
Hylar 5000® is a registered trademark of Ausimont USA, Inc.

Kynar 500® is a registered trademark of Atochem N.A.  
PAC-CLAD® is a registered trademark of Petersen Aluminum Corporation

**LIMITED WARRANTY AGREEMENT  
FOR WEATHER-TIGHTNESS LIMITED WARRANTY**

THIS LIMITED WARRANTY AGREEMENT, dated \_\_\_\_\_, sets forth the understanding and agreement between the parties concerning the limited warranty with respect to the following:

**BUILDING OWNER:**  
**BUILDING TYPE:**  
**BUILDING LOCATION:**  
**JOB NUMBER:**  
**ROOFING SYSTEM TYPE:**  
**DATE OF COMPLETION:**  
**CONTRACT AMOUNT (material and installation only):**  
**WARRANTY TYPE: Full System (excluding gutters, downspouts, Vented Flashings)**

**PETERSEN ALUMINUM CORPORATION ("PAC")** and the Roofing Contractor whose signature appears below ("**Roofing Contractor**") severally warrant to the above-named Building Owner ("**Owner**") that subject to all terms, conditions, limitations, allocations, and responsibilities stated herein, PAC's materials and workmanship and Roofing Contractor's workmanship in installing the PAC Roofing System ("**Roofing System**") on the above-named building will be adequate to prevent leaks for (XX) years commencing with the above date of completion of installation of the subject Roofing System.

**Limited Warranty Terms and Conditions**

1. This warranty will be fully satisfied by repair of the Roofing System, and any such repair shall be subject to this limited warranty against leaks only for any then remaining balance of the original XX-year warranty period. PAC and Roofing Contractor's aggregate total cumulative liability under this XX-year Weather-tightness Limited Warranty is limited to an amount equal to the sum of the price paid by Owner to PAC for materials furnished by PAC plus the price paid by Owner to the Roofing Contractor for the installation of those materials.
2. If upon PAC's inspection, PAC determines that the leaks in the Roofing System are caused by defects in the PAC Roofing System's material or in the workmanship of Roofing Contractor, Roofing System repair obligations shall then arise in accordance herewith, but Owner's remedies and PAC's and Roofing Contractor's liability shall in any event be limited to repair of the Roofing System, subject to the cost limitations set forth above. Otherwise, neither PAC nor Roofing Contractor shall have any liability hereunder.
3. Neither PAC nor Roofing Contractor shall have any liability

or responsibility under or in connection with either this XX-year Weather-tightness Limited Warranty or for leaks in the Roofing System, or otherwise, if any one or more of the following shall occur:

- a. deterioration caused by marine (salt water) atmosphere or by regular spray of either salt or fresh water;
  - b. corrosion caused by heavy fallout or exposure to corrosive chemicals, ash or fumes from any chemical plant, paper plant, and the like;
  - c. deterioration caused by any corrosive substance or any condensate of any harmful substance contained, generated or released inside the building;
  - d. damage caused by worker(s) on the roof;
  - e. damage to the Roofing System caused by natural disasters, including, but not limited to, lightning, or any strong wind, hurricane, fire, explosion, tornado, or earthquake or other accident or casualty;
  - f. failure by any contractor or subcontractor to follow PAC's recommended installation instructions for the layout, design and erection of the Roofing System, or other faulty or improper installation, (provided that if the faulty or improper installation is by Roofing Contractor, then only PAC shall be relieved of liability hereunder);
  - g. if, after installation of the Roofing System by Roofing Contractor, there are any alternations, such as, but not limited to, structural changes involving the Roofing System, or by structures, fixtures, or utilities being placed upon or attached to the roof without prior written authorization from PAC;
  - h. if there is any failure by the Owner or Lessee or other occupant or user to use reasonable care in maintaining the roof;
  - I. if Owner fails to comply with every term and/or condition stated in this Limited Warranty Agreement;
  - j. improper fabrication in the event fabrication is by other than PAC;
  - k. damage as a result of standing water in non-vertical application;
    - l. improper job site handling or storage (which includes failure to permit drainage of standing water);
    - m. vandalism, falling objects, civil commotions or acts of war, atomic radiation, acts of God, or other such similar or dissimilar occurrences beyond PAC's control.
4. Notwithstanding any other provision of this Limited Warranty Agreement, PAC shall not have any liability or responsibility at any time for, or as a consequence of, any condensation of underside corrosion which is, or was caused at any time, wholly or in part, by any condensation resulting from either or both of the following:

- i. The use of any inadequate vapor barrier where the insulation is installed immediately beneath the roof panels. An adequate vapor barrier is defined as one which has a perm rating greater than .05 or less with sealed joints and perimeter.
  - ii. The inadequate ventilation of the attic space between a roof panel and insulation, when insulation is installed directly on top of an existing roof.
5. PAC shall not have any liability or responsibility under or in connection with either this Limited Warranty Agreement or for the Roofing System in the event of a failure by any contractor or subcontractor to use only roof curbs, roof jacks, sealants, mastics, subframing, roof panels, clips, and flashing provided by PAC or such substitutes therefor approved by PAC in writing prior to their use.
6. PAC shall not have any obligation under this Weather-tightness Limited Warranty Agreement until final drawings of the completed roof are submitted to PAC by the roofing Contractor and accepted in writing by PAC. Such drawings must show the exact number, size and location of all roof penetrations and roof top equipment. Photos of the roof should accompany the drawings.
7. Neither PAC nor Roofing Contractor shall have any obligation under this Weather-tightness Limited Warranty Agreement until all bills for installation, supplies, and services have been paid in full to each of PAC, Roofing Contractor, and each material supplier, including the payment to PAC of the additional cost of this Limited Warranty.
8. Neither PAC's nor Roofing Contractor's failure at any time to enforce any of the terms or conditions stated herein shall be construed to be a waiver of any such provision or of the right thereafter to exercise any right granted thereunder.
9. This Weather-tightness Limited Warranty supersedes and is in lieu of any and all other warranties (whether express or implied) that are either in addition to or in conflict with the terms or conditions stated herein. ALL IMPLIED WARRANTIES OF MERCHANTABILITY OR FITNESS FOR ANY PARTICULAR PURPOSE WHICH EXCEED OR DIFFER FROM THE WARRANTIES HEREIN EXPRESSED ARE DISCLAIMED BY ALL OF THE PARTIES HERETO AND EXCLUDED FROM THIS XX-YEAR WEATHER-TIGHTNESS LIMITED WARRANTY. NEITHER PAC NOR ROOFING CONTRACTOR ASSUMES ANY LIABILITY FOR, AND THIS WARRANTY DOES NOT COVER, CONSEQUENTIAL DAMAGES OF ANY KIND WHICH RESULT FROM ANY FAILURE OF, USE OR MISUSE OF THE ROOFING SYSTEM. THIS IS THE ENTIRE WARRANTY AGREEMENT AND NO OTHER WARRANTY, EXPRESS OR IMPLIED, IS MADE BY EITHER PAC OR THE ROOFING CONTRACTOR.
10. If the subject roof is covered by products of more than one roofing products manufacturer, this Limited Warranty Agreement applies only to those portions of such roof which are covered solely by PAC-manufactured products.

11. Roofing installation must be supervised by an individual who has been approved in writing by PAC.
12. This Limited Warranty is intended only for use when reroofing an existing building and for new roof applications on conventional construction, and is not applicable when the roofing material is installed over new, pre-engineered metal building structures.
13. Roof panels must be made of a material which carries a 20-year durability warranty from PAC.
14. Any claim hereunder for leakage must be presented to PAC in writing within the warranty period and, in each case, within (30) days after discovery of the leak. Failure to do so shall automatically render this warranty void. The Owner must allow representatives of PAC reasonable opportunity to inspect the material claimed to be defective prior to removal or repair. If, after inspection of the material, the determination is made that the claim is valid, PAC will repair, restore, or replace, at PAC's discretion, the defective product. PAC shall, at its option, have the right to negotiate and approve any contract or arrangement pursuant to which any replacement, repair, or restoration covered by this warranty is to be done. PAC reserves the right to discontinue items in its product line. Should the product covered under this warranty be discontinued, PAC shall have the right to substitute a product of equal quality and price at its discretion. It is understood that normal exposure to the elements may preclude a perfect color match with replacement material. Refinishing shall be performed by using standard finishing practices and materials as selected by PAC. The warranty on any refinished or replaced product supplied hereunder shall be for the remainder of the original warranty period.
15. PAC and Roofing Contractor SHALL IN NO EVENT BE LIABLE FOR SPECIAL, INDIRECT, OR CONSEQUENTIAL DAMAGES, DAMAGE OR LOSS TO OWNER'S BUILDING, ITS CONTENTS OR OTHER MATERIALS, OR CLAIMS OF THIRD PARTIES, RESULTING FROM ANY CAUSE WHATSOEVER INCLUDING LEAKS IN THE ROOFING SYSTEM. PAC OR ROOFING CONTRACTOR'S LIABILITY FOR ANY CAUSE OF ACTION, WHETHER BASED ON NEGLIGENCE, CONTRACT OR STRICT LIABILITY, SHALL NOT EXCEED THE LESSER OF EITHER THE COST OF REPAIRING DEFECTIVE MATERIALS ON SITE, OR THE UNUSED BALANCE OF PAC'S AND ROOFING CONTRACTOR'S AGGREGATE CUMULATIVE LIABILITY HEREUNDER AS PROVIDED IN PARAGRAPH 1 HEREOF. IT IS EXPRESSLY AGREED THAT THE REMEDIES UNDER THIS AGREEMENT SHALL BE EXCLUSIVE.
16. This Warranty is given to the above named Owner only, and is not transferable.
17. Notwithstanding any other portion of this Agreement, it is specifically agreed that the aggregate total cumulative liability of PAC and Roofing Contractor hereunder shall be at all times limited to the lesser of either
  - a. the unused balance of PAC's and Roofing Contractor's

cumulative liability hereunder as provided in Paragraph 1 hereof, or

- b. the direct cost of refinishing, replacing or otherwise repairing the portion of the Roofing System evidencing failure.

The respective responsibilities of PAC and Roofing Contractor hereunder shall be as follows: During the first two (2) years plus any applicable extension period(s), Roofing Contractor shall be solely liable for all such costs and expenses of repair, refinishing or replacement of the Roofing System as are covered hereunder. In the event that a roof repair is necessary during the first two-year period, or any extension thereof, then Roofing Contractor's liability (which shall be exclusive and in lieu of all PAC liability during such period and any extensions thereof) shall be extended for a two-year period from the date of the last such repair.

After the expiration of such two-year period and all applicable extensions thereof, Roofing Contractor shall have no further liability hereunder. Thereafter, PAC shall be liable for, and its liability shall be limited to, the prorated portion of such costs and expenses of the repair, refinishing, or replacement of the Roofing System as are covered hereunder, which proration is stated in the following table:

Years after installation date in which failure occurs.	Percentage of the covered costs and expenses which PAC will pay provided that Roofing Contractor's initial 2-year period and all extensions thereof have expired.
2 but less than 5	100%
5 but less than 6	90%
6 but less than 7	80%
7 but less than 8	70%
8 but less than 9	60%
9 but less than 10	50%
10 but less than 12	40%
12 but less than 14	30%
14 but less than 17	20%
17 but less than 20	10%

18. The Warranty expressed herein shall become effective only upon the execution hereof by PAC, the Roofing Contractor, and the Owner named above. This agreement contains the entire agreement of the parties with respect to the subject matter hereof. This Agreement can only be changed or amended in writing executed by all parties hereto.
19. This Agreement shall be governed by the laws of the State of Illinois.

**PETERSEN ALUMINUM CORPORATION**

By: \_\_\_\_\_

Title: \_\_\_\_\_

**ACCEPTED AND AGREE TO:  
BUILDING OWNER:**

By: \_\_\_\_\_

Title: \_\_\_\_\_

**ACCEPTED AND AGREED TO:  
ROOFING CONTRACTOR:**

By: \_\_\_\_\_

Title: \_\_\_\_\_

*SALE*