

KEY TO SYMBOLS



The Wallace Group
62915 NE 18th Street, Suite 1
Bend, OR 97701
(541) 382-4707

CLIENT SRG Partnership, Inc.

PROJECT NAME OSU Cascades Geo. Exploration Boring

PROJECT NUMBER 11298-1

PROJECT LOCATION Bend, Oregon

LITHOLOGIC SYMBOLS (Unified Soil Classification System)



BASALT: Basalt



PUMICE: Pumice



SM: USCS Silty Sand



TUFF: Tuff

SAMPLER SYMBOLS



Rock Core

WELL CONSTRUCTION SYMBOLS



Capped Riser



Cement Seal



Filter Pack: Bottom of hole



Slotted Pipe

ABBREVIATIONS

LL - LIQUID LIMIT (%)
PI - PLASTIC INDEX (%)
MC - MOISTURE CONTENT (%)
DD - DRY DENSITY (PCF)
NP - NON PLASTIC
FINES - PERCENT PASSING NO. 200 SIEVE
PP - POCKET PENETROMETER (TSF)
OC - ORGANIC CONTENT (%)

TV - TORVANE
PID - PHOTOIONIZATION DETECTOR
UCCS- UNCONFINED COMPRESSION
ppm - PARTS PER MILLION
▽ Water Level at Time of Drilling, or as Shown
▼ Water Level at End of Drilling, or as Shown
▼ Water Level After 24 Hours, or as Shown

KEY TO SYMBOLS - WALLACE GROUP DATA TEMPLATE.GDT - 5/20/20 13:28 - L:\GINT PRO - FILES\BENTLEY\GINT\PROJECTS\11298-1 OSU GEO EXPLORATION BORING.GPJ

Figure: 2

CLIENT <u>SRG Partnership, Inc.</u>	PROJECT NAME <u>OSU Cascades Geo. Exploration Boring</u>
PROJECT NUMBER <u>11298-1</u>	PROJECT LOCATION <u>Bend, Oregon</u>
DATE STARTED <u>3/17/20</u> COMPLETED <u>3/22/20</u>	GROUND ELEVATION _____
DRILLING CONTRACTOR <u>Haz-Tech Drilling, Inc.</u>	GROUND WATER LEVELS:
DRILLING METHOD <u>HQ & NX Coring</u>	▽ AT TIME OF DRILLING <u>400.00 ft</u>
LOGGED BY <u>SMW</u> CHECKED BY <u>SC</u>	▽ 24HRS AFTER DRILLING <u>250.00 ft</u>
NOTES _____	

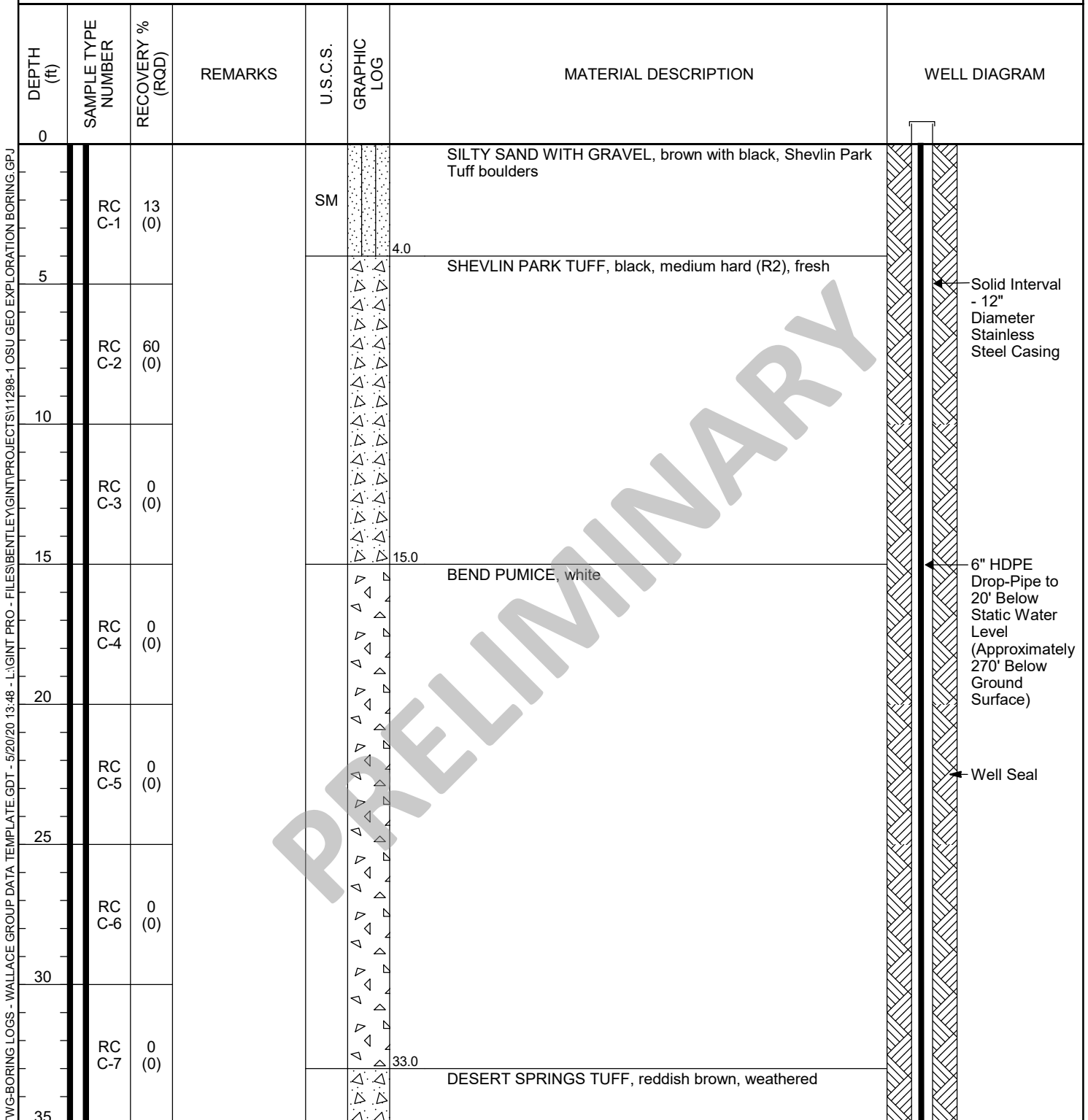


Figure: 2 - 1.1

CLIENT SRG Partnership, Inc.

PROJECT NAME OSU Cascades Geo. Exploration Boring

PROJECT NUMBER 11298-1

PROJECT LOCATION Bend, Oregon

DEPTH (ft)	SAMPLE TYPE NUMBER	RECOVERY % (RQD)	REMARKS	U.S.C.S.	GRAPHIC LOG	MATERIAL DESCRIPTION	WELL DIAGRAM
35							
	RC C-8	7 (0)				DESERT SPRINGS TUFF, reddish brown, weathered (continued)	
40							
	RC C-9	0 (0)					
45							
	RC C-10	0 (0)				CINDERS AND PUMICE, silt infilling, fine-grained sand infilling, red to white with brown	
50							
	RC C-11	8 (0)					
55							
	RC C-12	0 (0)					
60							
	RC C-13	30 (8)				INTERBEDDED BASALT AND CINDERS, silt infilling, red to gray, cinder zones are very weak (R1), basalt zones are moderate to strong (R3-R4), slightly weathered	
65							
	RC C-14	20 (0)					
70							
	RC C-15	3 (0)				CINDERS WITH PUMICE, red to orange, fine to coarse grained, welded, porous, subangular to angular	
75							

TWG-BORING LOGS - WALLACE GROUP DATA TEMPLATE.GDT - 5/20/20 13:48 - L:\GINT PRO - FILES\BENTLEY\GINT\PROJECTS\11298-1 OSU GEO EXPLORATION BORING.GPJ

PRELIMINARY

Figure: 2 - 1.2

CLIENT SRG Partnership, Inc.

PROJECT NAME OSU Cascades Geo. Exploration Boring

PROJECT NUMBER 11298-1

PROJECT LOCATION Bend, Oregon

DEPTH (ft)	SAMPLE TYPE NUMBER	RECOVERY % (RQD)	REMARKS	U.S.C.S.	GRAPHIC LOG	MATERIAL DESCRIPTION	WELL DIAGRAM
75							
	RC C-16	20 (0)			▽	CINDERS WITH PUMICE, red to orange, fine to coarse grained, welded, porous, subangular to angular (continued)	
80					▽		
	RC C-17	0 (0)			▽		
85					▽		
	RC C-18	0 (0)			▽		
90					▽		
	RC C-19	20 (0)			▽		
95					▽		
	RC C-20	50 (8)			▽		
100					▽		
	RC C-21	5 (0)			▽		
105					▽		
	RC C-22	0 (0)			▽		
110					▽		
	RC C-23	18 (7)			▽		
115					▽		

PRELIMINARY

TWG-BORING LOGS - WALLACE GROUP DATA TEMPLATE.GDT - 5/20/20 13:48 - L:\GINT PRO - FILES\BENTLEY\GINT\PROJECTS\11298-1 OSU GEO EXPLORATION BORING.GPJ

Figure: 2 - 1.3

CLIENT SRG Partnership, Inc.

PROJECT NAME OSU Cascades Geo. Exploration Boring

PROJECT NUMBER 11298-1

PROJECT LOCATION Bend, Oregon

DEPTH (ft)	SAMPLE TYPE NUMBER	RECOVERY % (RQD)	REMARKS	U.S.C.S.	GRAPHIC LOG	MATERIAL DESCRIPTION	WELL DIAGRAM
115							
	RC C-24	52 (0)			▽	CINDERS WITH PUMICE, red to orange, fine to coarse grained, welded, porous, subangular to angular (continued)	
120	RC C-25	7 (0)			▽		
125	RC C-26	27 (7)			▽		
130	RC C-27	15 (0)			▽		
135	RC C-28	42 (0)			▽		
140	RC C-29	3 (0)			▽		
145	RC C-30	28 (0)			▽		
150	RC C-31	23 (0)			▽		
155							

TWG-BORING LOGS - WALLACE GROUP DATA TEMPLATE.GDT - 5/20/20 13:48 - L:\GINT PRO - FILES\BENTLEY\GINT\PROJECTS\11298-1 OSU GEO EXPLORATION BORING.GPJ

PRELIMINARY

Figure: 2 - 1.4

CLIENT SRG Partnership, Inc.

PROJECT NAME OSU Cascades Geo. Exploration Boring

PROJECT NUMBER 11298-1

PROJECT LOCATION Bend, Oregon

DEPTH (ft)	SAMPLE TYPE NUMBER	RECOVERY % (RQD)	REMARKS	U.S.C.S.	GRAPHIC LOG	MATERIAL DESCRIPTION	WELL DIAGRAM
155							
	RC C-32	52 (0)			▽	CINDERS WITH PUMICE, red to orange, fine to coarse grained, welded, porous, subangular to angular (continued)	
160	RC C-33	53 (8)			▽		
165	RC C-34	47 (15)			▽		
170	RC C-35	0 (0)			▽		
175	RC C-36	93 (7)			▽		
180	RC C-37	87 (50)	Basaltic andesite interbeds/fragments		▽		
185	RC C-38	67 (23)			▽		
190	RC C-39	48 (0)			▽		
195							

TWG-BORING LOGS - WALLACE GROUP DATA TEMPLATE.GDT - 5/20/20 13:48 - L:\GINT PRO - FILES\BENTLEY\GINT\PROJECTS\11298-1 OSU GEO EXPLORATION BORING.GPJ

PRELIMINARY

Figure: 2 - 1.5

CLIENT SRG Partnership, Inc.

PROJECT NAME OSU Cascades Geo. Exploration Boring

PROJECT NUMBER 11298-1

PROJECT LOCATION Bend, Oregon

DEPTH (ft)	SAMPLE TYPE NUMBER	RECOVERY % (RQD)	REMARKS	U.S.C.S.	GRAPHIC LOG	MATERIAL DESCRIPTION	WELL DIAGRAM
195							
	RC C-40	97 (0)			▽	CINDERS WITH PUMICE, red to orange, fine to coarse grained, welded, porous, subangular to angular (continued)	
200	RC C-41	40 (0)		▽			
205	RC C-42	93 (45)		▽			
210	RC C-43	82 (0)		▽			
215	RC C-44	97 (0)		▽			
220	RC C-45	83 (0)		▽			
225	RC C-46	93 (0)		▽			
230	RC C-47	67 (0)		▽			
235							

TWG-BORING LOGS - WALLACE GROUP DATA TEMPLATE.GDT - 5/20/20 13:48 - L:\GINT PRO - FILES\BENTLEY\GINT\PROJECTS\11298-1 OSU GEO EXPLORATION BORING.GPJ

PRELIMINARY

Figure: 2 - 1.6

CLIENT SRG Partnership, Inc.

PROJECT NAME OSU Cascades Geo. Exploration Boring

PROJECT NUMBER 11298-1

PROJECT LOCATION Bend, Oregon

DEPTH (ft)	SAMPLE TYPE NUMBER	RECOVERY % (RQD)	REMARKS	U.S.C.S.	GRAPHIC LOG	MATERIAL DESCRIPTION	WELL DIAGRAM
235							
	RC C-48	60 (0)			▼	CINDERS WITH PUMICE, red to orange, fine to coarse grained, welded, porous, subangular to angular (continued)	
240	RC C-49	88 (0)		▼			
245	RC C-50	12 (0)		▼			
250	RC C-51	38 (0)		▼			
255	RC C-52	28 (0)		▼			
260	RC C-53	77 (0)		▼			
265	RC C-54	75 (0)		▼			
270	RC C-55	47 (0)		▼			
275							

TWG-BORING LOGS - WALLACE GROUP DATA TEMPLATE.GDT - 5/20/20 13:48 - L:\GINT PRO - FILES\BENTLEY\GINT\PROJECTS\11298-1 OSU GEO EXPLORATION BORING.GPJ

PRELIMINARY

Figure: 2 - 1.7

CLIENT SRG Partnership, Inc.

PROJECT NAME OSU Cascades Geo. Exploration Boring

PROJECT NUMBER 11298-1

PROJECT LOCATION Bend, Oregon

DEPTH (ft)	SAMPLE TYPE NUMBER	RECOVERY % (RQD)	REMARKS	U.S.C.S.	GRAPHIC LOG	MATERIAL DESCRIPTION	WELL DIAGRAM
275							
	RC C-56	93 (0)			▽	CINDERS WITH PUMICE, red to orange, fine to coarse grained, welded, porous, subangular to angular (continued)	
280							
	RC C-57	72 (0)			▽		
285							
	RC C-58	43 (0)			▽		
290							
	RC C-59	48 (25)			▽		
295							
	RC C-60	28 (42)			▽		
300							
	RC C-61	40 (20)			300.0	BASALT WITH CINDERS, basalt is moderately strong (R3), vesicular, very weak cinder interbeds (R0-R-1),	
305							
	RC C-62	35 (7)			○		
310							
	RC C-63	100 (80)			○		
315							

TWG-BORING LOGS - WALLACE GROUP DATA TEMPLATE.GDT - 5/20/20 13:48 - L:\GINT PRO - FILES\BENTLEY\GINT\PROJECTS\11298-1 OSU GEO EXPLORATION BORING.GPJ

PRELIMINARY

Figure: 2 - 1.8

CLIENT SRG Partnership, Inc.

PROJECT NAME OSU Cascades Geo. Exploration Boring

PROJECT NUMBER 11298-1

PROJECT LOCATION Bend, Oregon

DEPTH (ft)	SAMPLE TYPE NUMBER	RECOVERY % (RQD)	REMARKS	U.S.C.S.	GRAPHIC LOG	MATERIAL DESCRIPTION	WELL DIAGRAM
315							
	RC C-64	100 (82)				BASALT WITH CINDERS, basalt is moderately strong (R3), vesicular, very weak cinder interbeds (R0-R-1), <i>(continued)</i>	
320							
	RC C-65	100 (88)	Fresh basalt below 320'				
325							
	RC C-66	100 (88)					
330							
	RC C-67	100 (57)					
335							
	RC C-68	100 (72)					
340							
	RC C-69	47 (0)				340.0 WEATHERED BASALT, red, large fractures/voids in rock	
345							
	RC C-70	53 (12)					
350							
	RC C-71	22 (17)					
355							

TWG-BORING LOGS - WALLACE GROUP DATA TEMPLATE.GDT - 5/20/20 13:48 - L:\GINT PRO - FILES\BENTLEY\GINT\PROJECTS\11298-1 OSU GEO EXPLORATION BORING.GPJ

PRELIMINARY

Figure: 2 - 1.9

CLIENT SRG Partnership, Inc.

PROJECT NAME OSU Cascades Geo. Exploration Boring

PROJECT NUMBER 11298-1

PROJECT LOCATION Bend, Oregon

DEPTH (ft)	SAMPLE TYPE NUMBER	RECOVERY % (RQD)	REMARKS	U.S.C.S.	GRAPHIC LOG	MATERIAL DESCRIPTION	WELL DIAGRAM
355							
	RC C-72	32 (12)				WEATHERED BASALT, red, large fractures/voids in rock <i>(continued)</i>	
360							
	RC C-73	28 (8)					
365							
	RC C-74	30 (8)					
370							
	RC C-75	100 (43)				BASALT, gray, moderately strong (R3), fresh to slightly weathered, vesicular	
375							
	RC C-76	87 (73)					
380							
	RC C-77	58 (37)					
385							
	RC C-78	50 (7)					
390							
	RC C-79	32 (0)					
395							

TWG-BORING LOGS - WALLACE GROUP DATA TEMPLATE.GDT - 5/20/20 13:48 - L:\GINT PRO - FILES\BENTLEY\GINT\PROJECTS\11298-1 OSU GEO EXPLORATION BORING.GPJ

PRELIMINARY

Figure: 2 - 1.10

CLIENT SRG Partnership, Inc.

PROJECT NAME OSU Cascades Geo. Exploration Boring

PROJECT NUMBER 11298-1

PROJECT LOCATION Bend, Oregon

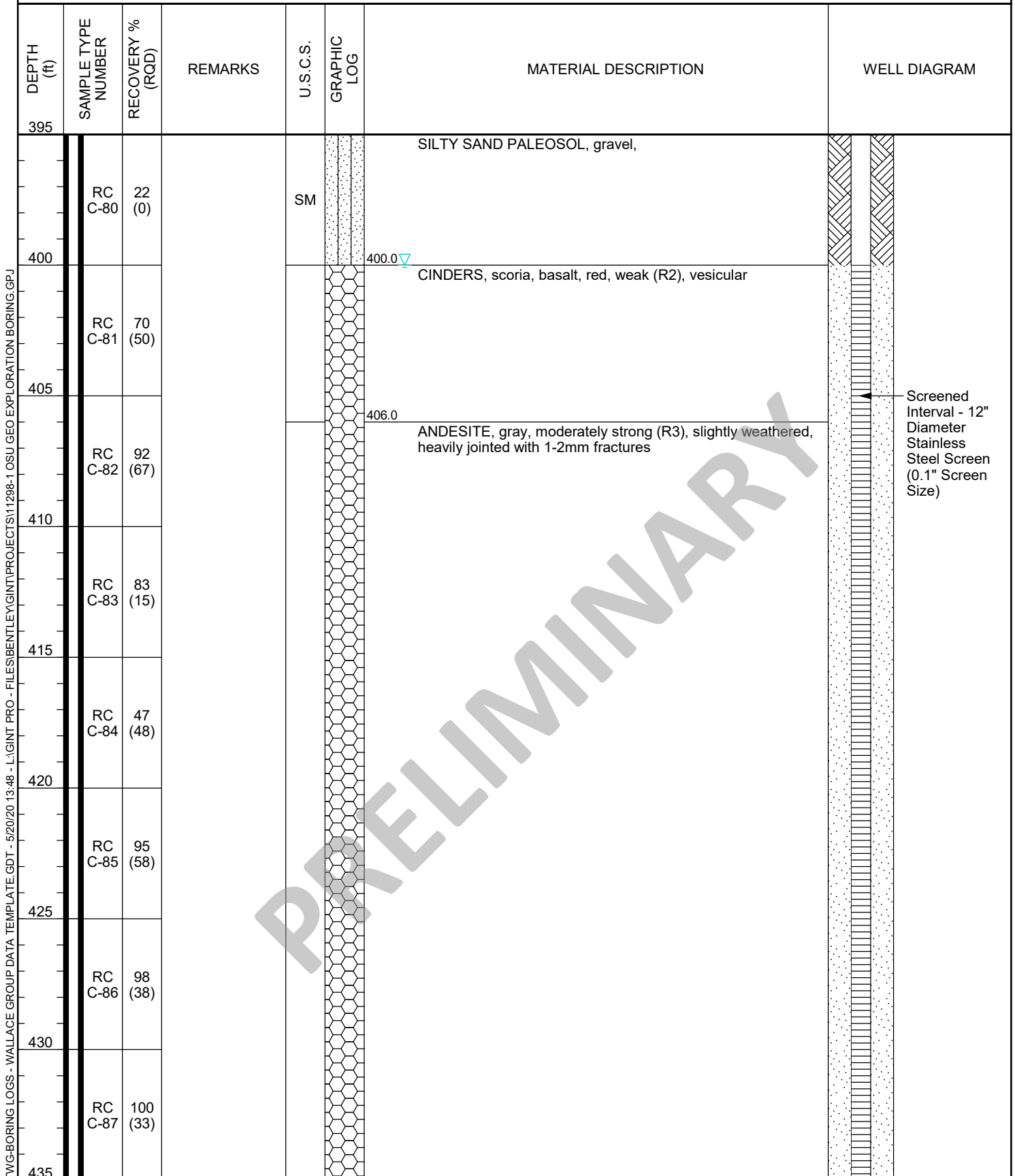

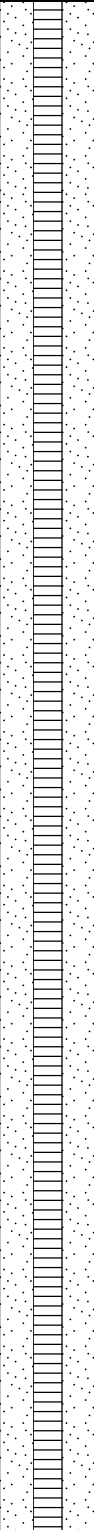
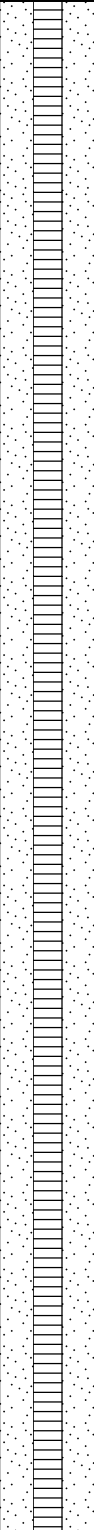


Figure: 2 - 1.11

CLIENT SRG Partnership, Inc. **PROJECT NAME** OSU Cascades Geo. Exploration Boring
PROJECT NUMBER 11298-1 **PROJECT LOCATION** Bend, Oregon

DEPTH (ft)	SAMPLE TYPE NUMBER	RECOVERY % (RQD)	REMARKS	U.S.C.S.	GRAPHIC LOG	MATERIAL DESCRIPTION	WELL DIAGRAM
435							
440	RC C-88					ANDESITE, gray, moderately strong (R3), slightly weathered, heavily jointed with 1-2mm fractures (continued)	
445							 <p>◀ Lithology to be determined</p>
450							
455							
460							
465							
470							
475							

PRELIMINARY

TWG-BORING LOGS - WALLACE GROUP DATA TEMPLATE.GDT - 5/20/20 13:48 - L:\GINT PRO - FILES\BENTLEY\GINT\PROJECTS\11298-1 OSU GEO EXPLORATION BORING.GPJ

Figure: 2 - 1.12

CLIENT SRG Partnership, Inc. **PROJECT NAME** OSU Cascades Geo. Exploration Boring
PROJECT NUMBER 11298-1 **PROJECT LOCATION** Bend, Oregon

DEPTH (ft)	SAMPLE TYPE NUMBER	RECOVERY % (RQD)	REMARKS	U.S.C.S.	GRAPHIC LOG	MATERIAL DESCRIPTION	WELL DIAGRAM
475							
480							
485							
490							
495							
500							

Bottom of borehole at 500.0 feet.

PRELIMINARY

TWG-BORING LOGS - WALLACE GROUP DATA TEMPLATE.GDT - 5/20/20 13:48 - L:\GINT PRO - FILES\BENTLEY\GINT\PROJECTS\11298-1 OSU GEO EXPLORATION BORING.GPJ

Figure: 2 - 1.13