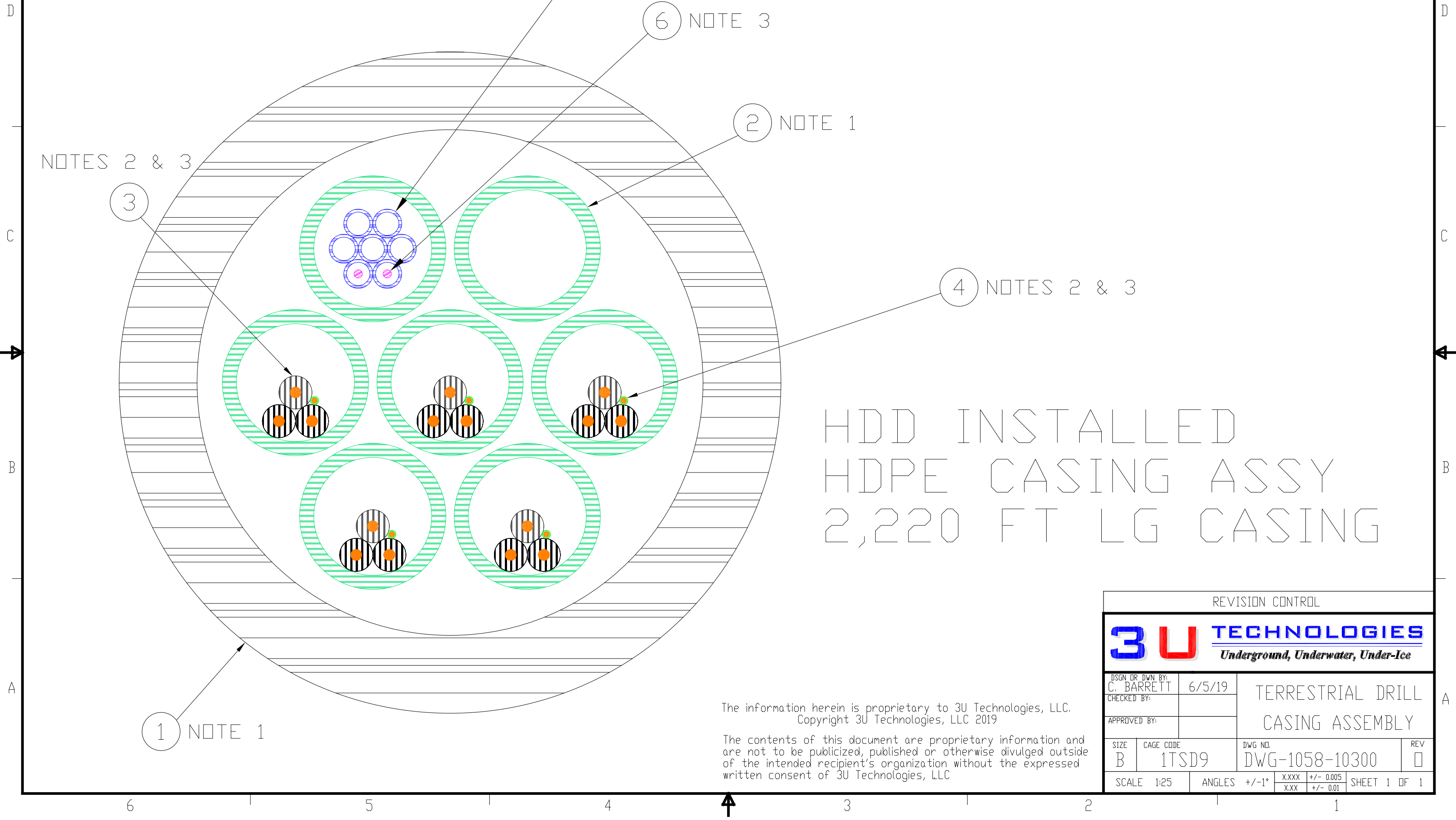


BILL OF MATERIALS			
ITEM	PART NO	DESCRIPTION	QTY
1		30" DR 9 - HDPE CASING, 30' DD x 22.9' ID	1
2		6" SDR 11 - HDPE CONDUIT, 6.63 DD x 5.35 ID	7
3		4/0 COPPER, SINGLE CORE, 35 KV, EPR 100% INSULATION	15
4		2 AWG, COPPER, INSULATED GROUND CABLE	5
5		1' SDR-11 HDPE CONDUIT, 1.315' OD, 1.055' ID	7
6	TBD	FIBER OPTIC MICRODUCT, 12 INTERNAL MICRODUCT, 12 FIBERS EACH	2

- NOTES
- ITEMS 1 & 2 SIZING SHOWN IS PRELIMINARY PENDING DETAILED BORE ENGINEERING
 - ITEMS 4 & 5 FACTORY TWISTED TOGETHER & REELED - 2,400 FEET EACH
 - INSTALLATION OF ITEM 3, 4, 5 & 6 (CABLES) IS NOT INCLUDED IN HDD WORK SCOPE



HDD INSTALLED
 HDPE CASING ASSY
 2,220 FT LG CASING

The information herein is proprietary to 3U Technologies, LLC.
 Copyright 3U Technologies, LLC 2019

The contents of this document are proprietary information and are not to be publicized, published or otherwise divulged outside of the intended recipient's organization without the expressed written consent of 3U Technologies, LLC

REVISION CONTROL			
3U TECHNOLOGIES		<i>Underground, Underwater, Under-Ice</i>	
DSGN OR DWN BY: C. BARRETT	6/5/19	TERRESTRIAL DRILL CASING ASSEMBLY	
CHECKED BY:			
APPROVED BY:			
SIZE B	CAGE CODE 1TSD9	DWG NO. DWG-1058-10300	REV 0
SCALE 1:25	ANGLES +/-1°	X.XXX XXX	+/- 0.005 +/- 0.01
		SHEET 1 OF 1	