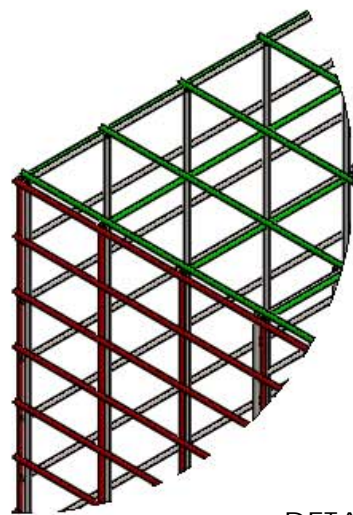


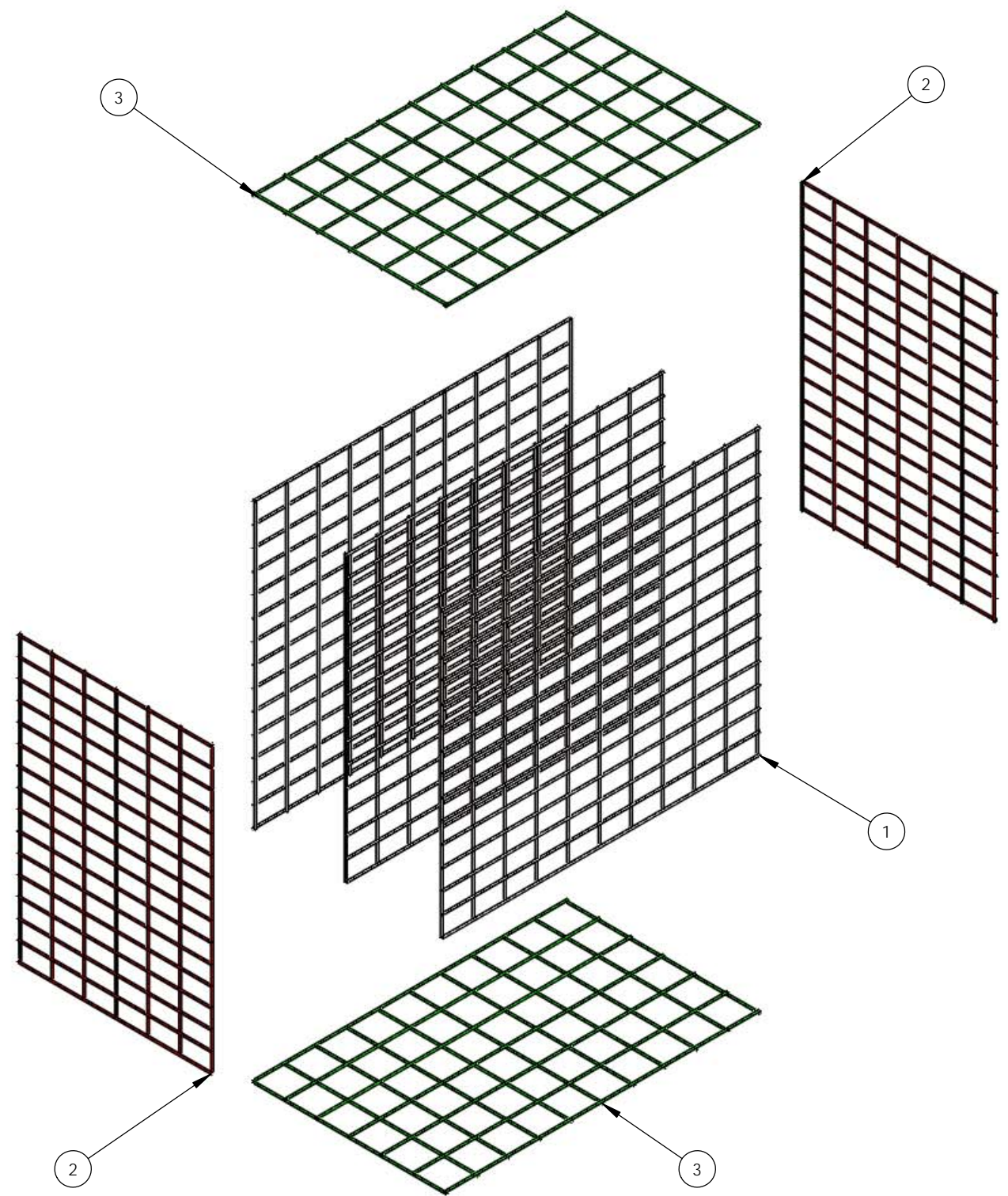
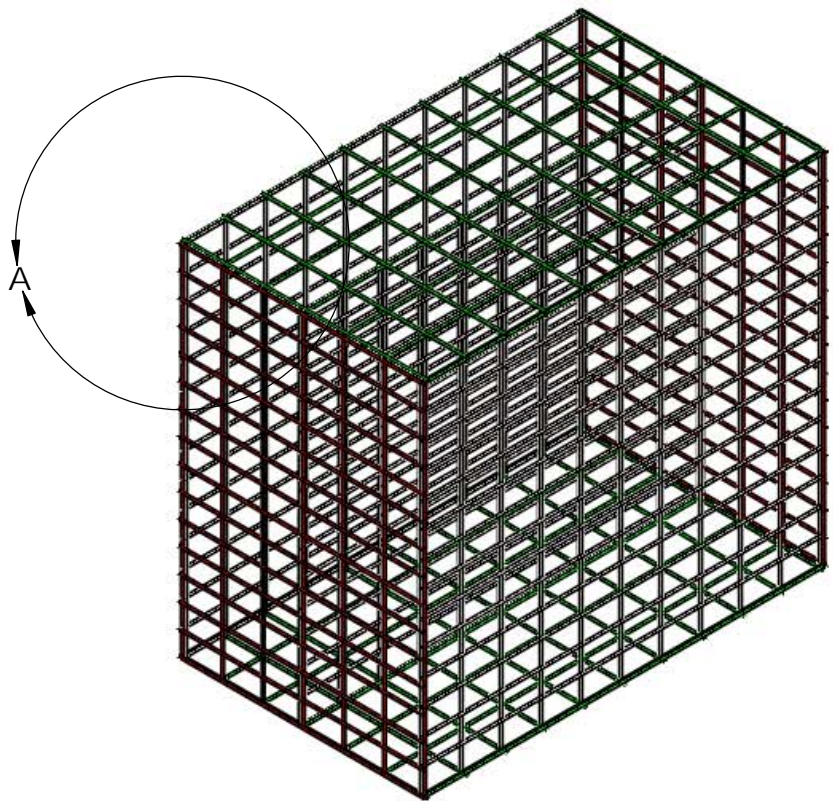


		<b>ISSUE DATE:</b>	May 17, 2018			
<b>RFQ #</b>	<b>SF194720Q</b>		<b>RFQ DUE DATE:</b>	<b>May 22, 2018, 10:00 AM</b>		
<b>DELIVER TO:</b>			<b>REQUESTED BY / RETURN QUOTE TO:</b>			
<b>DEPARTMENT:</b>	Capital Planning and Development		<b>NAME:</b>	Shannon Fanourakis		
<b>ADDRESS:</b>	Research Way Bldg., 4700 SW Research Way		<b>E-MAIL:</b>	Shannon.Fanourakis@oregonstate.edu		
<b>CITY, STATE ZIP:</b>	Corvallis, OR 97333		<b>TELEPHONE:</b>	(541) 737-6995		
<b>REQUIRED DELIVERY DATE:</b>			<b>FAX:</b>	(541) 737-2170		
ITEM	DESCRIPTION	QTY	UNIT	UNIT PRICE	TOTAL PRICE	
1	5600 Series Tall Archive Rack, Fabricated with 2ga (.263") 304 Stainless steel wire. Raw finish. Individual Wire joints resistance welded. Panels joined by GMAW process .75" stich minimum every 6" on Panel Edges. Per attached drawings	120	Ea			
2	3900 Series Short Archive Rack, Fabricated with 2ga (.263") 304 Stainless steel wire. Raw finish. Individual wire joints resistance welded. Panels joined by GMAW process .75" stich minimum every 6" on panel edges. Per attached drawings	80	Ea			
3	Freight Charges (Dock and forklift on site)	1	Lot			
<b>Delivery is f.o.b. destination, prepaid and allowed. Shipping, freight and handling must be included in quoted prices. Additional costs for such are disallowed.</b>				<b>TOTAL</b>		
<b>DELIVERY TIME AFTER RECEIPT OF ORDER:</b>			<b>PRICES VALID THROUGH:</b>			
<b>SPECIAL INSTRUCTIONS:</b>		<b>VENDOR INFORMATION:</b>				
<p>1. Unless otherwise specified, all items quoted are to be new, unused and not remanufactured in any way.</p> <p>2. Brand names are for the purpose of describing and establishing the characteristics desired and are not intended to limit or restrict competition. Quoters may submit quotes for substantially equivalent products unless the RFQ provides that a specific brand is necessary because of compatibility requirements, etc. All such brand substitutions shall be subject to approval by OSU.</p> <p>3. Quoters must clearly identify all products quoted. Brand name and model or number must be shown.</p> <p>4. Only documents issued as addenda by OSU serve to change the RFQ in any way.</p> <p>5. OSU reserves the right to make the award by item, partial or whole lots, groups of items or entire quote, whichever is in the best interest of OSU.</p> <p>6. OSU may reject any Quote not in compliance with the RFQ, attachments, and addenda, or if it is in the best interest of OSU.</p> <p>7. This RFQ form must be completed, signed and returned with all required documents.</p>		<b>COMPANY:</b>				
		<b>ADDRESS:</b>				
		<b>CITY, STATE, ZIP:</b>				
		<b>CONTACT NAME:</b>				
		<b>E-MAIL:</b>				
		<b>TELEPHONE:</b>				
		<b>FAX:</b>				
		<b>VENDOR SIGNATURE:</b>				
		<i>By signature below the undersigned certifies that they are authorized to act on behalf of the quoter and will comply with all aspects of the quote herein.</i>				
		<b>SIGNATURE:</b>				
		<b>NAME/TITLE:</b>				

This procurement is subject to the indicated Oregon State University Standard Terms and Conditions for:  Goods  
 Services  Purchase Order Construction  Software. The indicated terms and conditions may be viewed at  
<http://pacs.oregonstate.edu/terms-and-conditions>



DETAIL A  
SCALE 1:8



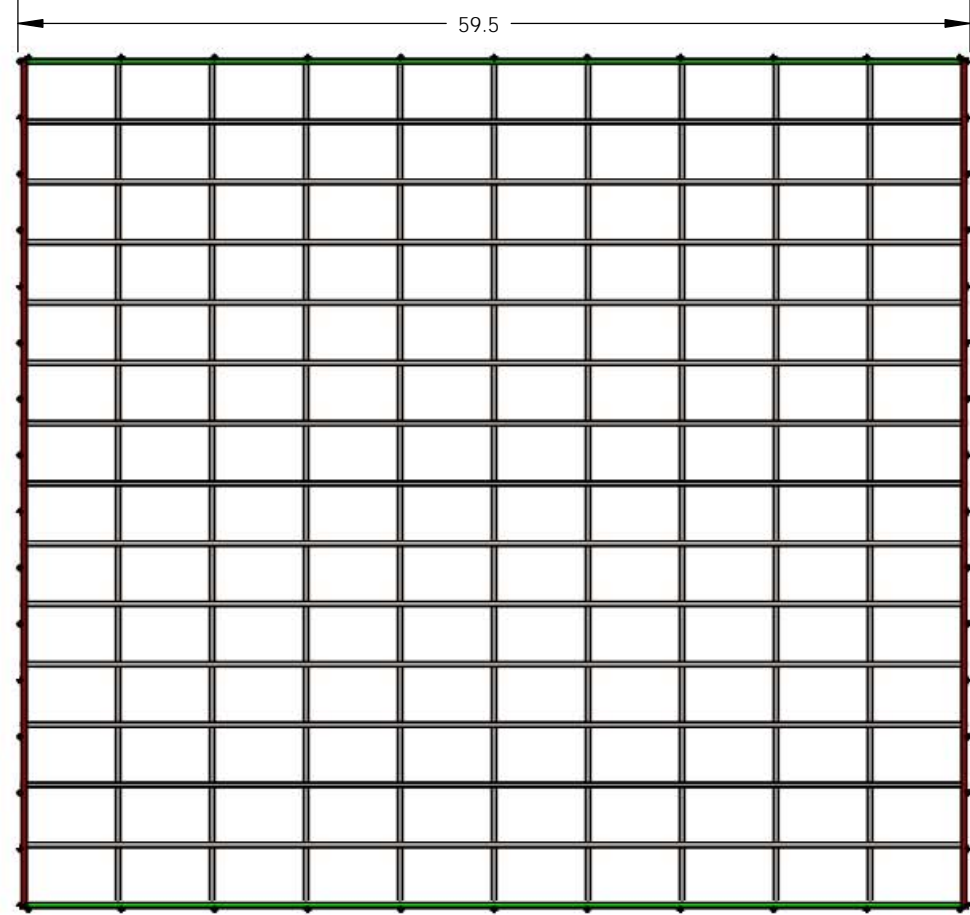
ITEM NO.	PART NUMBER	DETAIL LOCATION	QTY.
1	18602_A_001 5600 Series Tall Rack Face Panel	Sheet 3	3
2	18602_A_002 All Series Tall Rack Side Panel	Sheet 5	2
3	18602_A_004 All Series Cap Panel	Sheet 4	2

DRAWING TITLE		SHEET TITLE		PROJECT NO.	DWG. NO.
5600 Series Tall Archive Rack		Isometric View, Exploded View, and BOM		18602	005
MATERIAL:	TBD	PROPRIETARY AND CONFIDENTIAL	NOTE:	INDEX NO.	REV. NO.
DRAWN BY:	BR	THE INFORMATION CONTAINED IN THIS DRAWING IS THE SOLE PROPERTY OF OREGON STATE UNIVERSITY, COLLEGE OF EARTH, OCEAN, AND ATMOSPHERIC SCIENCES. ANY REPRODUCTION IN PART OR AS A WHOLE WITHOUT THE WRITTEN PERMISSION OF OREGON STATE UNIVERSITY, COLLEGE OF EARTH, OCEAN, AND ATMOSPHERIC SCIENCES IS PROHIBITED.	140 Openings 5.62" X 3.51" Corresponds to "Cage Style #4" Compatible with Marion Dufresne, and large flat bottom D-tubes. Also compatible with large curved D-tubes. For use on lower two shelves of storage units.	TBD	002
DATE:	03/21/18			SCALE: 1:20	05/17/18
			TOLERANCES		
			DIMENSIONS IN INCHES		
			.X ±.05		
			.XX ±.01		
			.XXX ±.005		

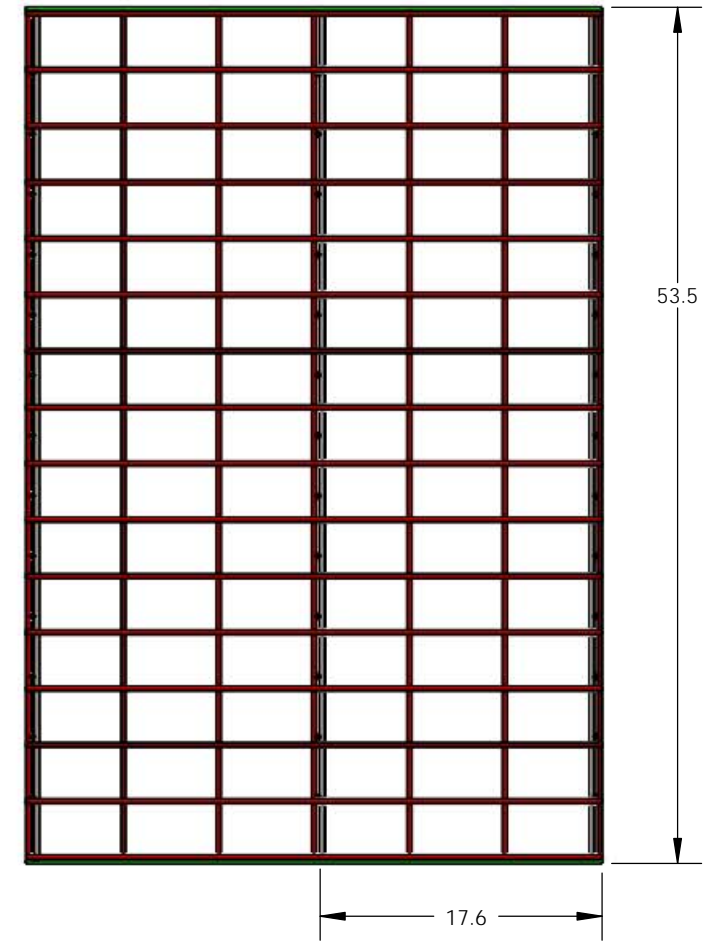


8 7 6 5 4 3 2 1

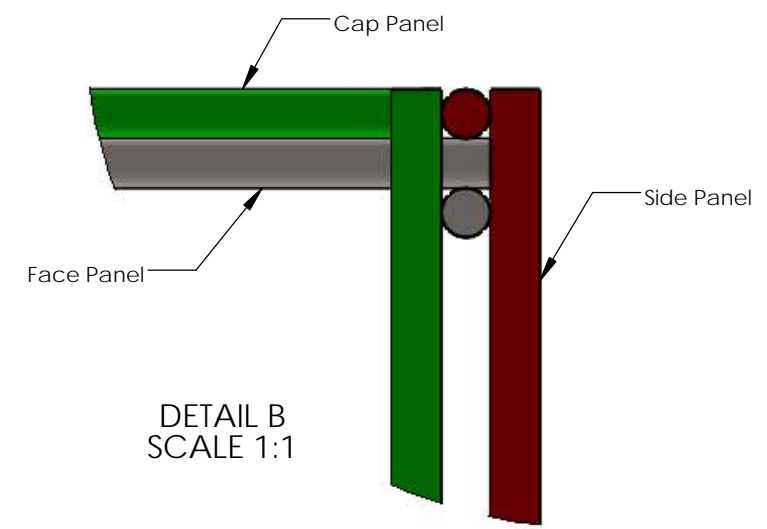
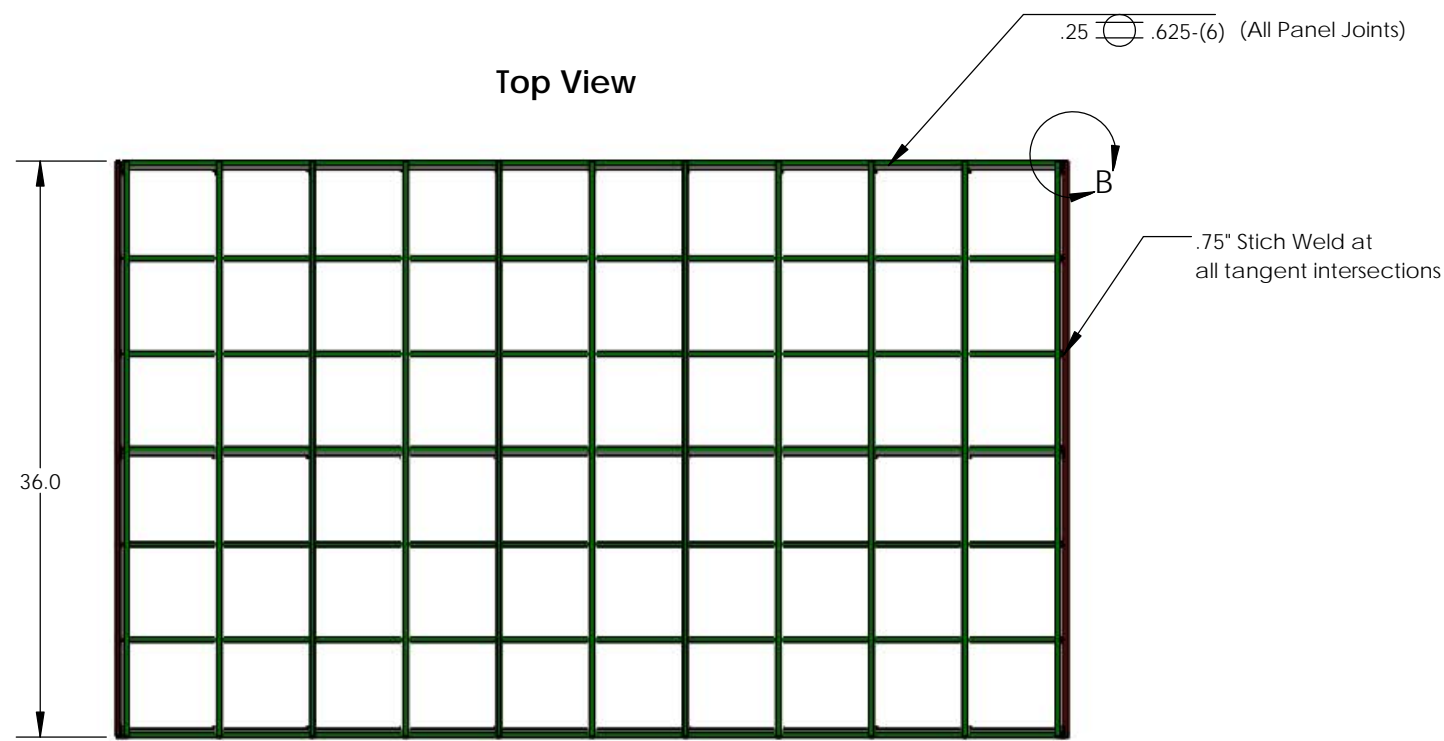
Front View



Side View



Top View



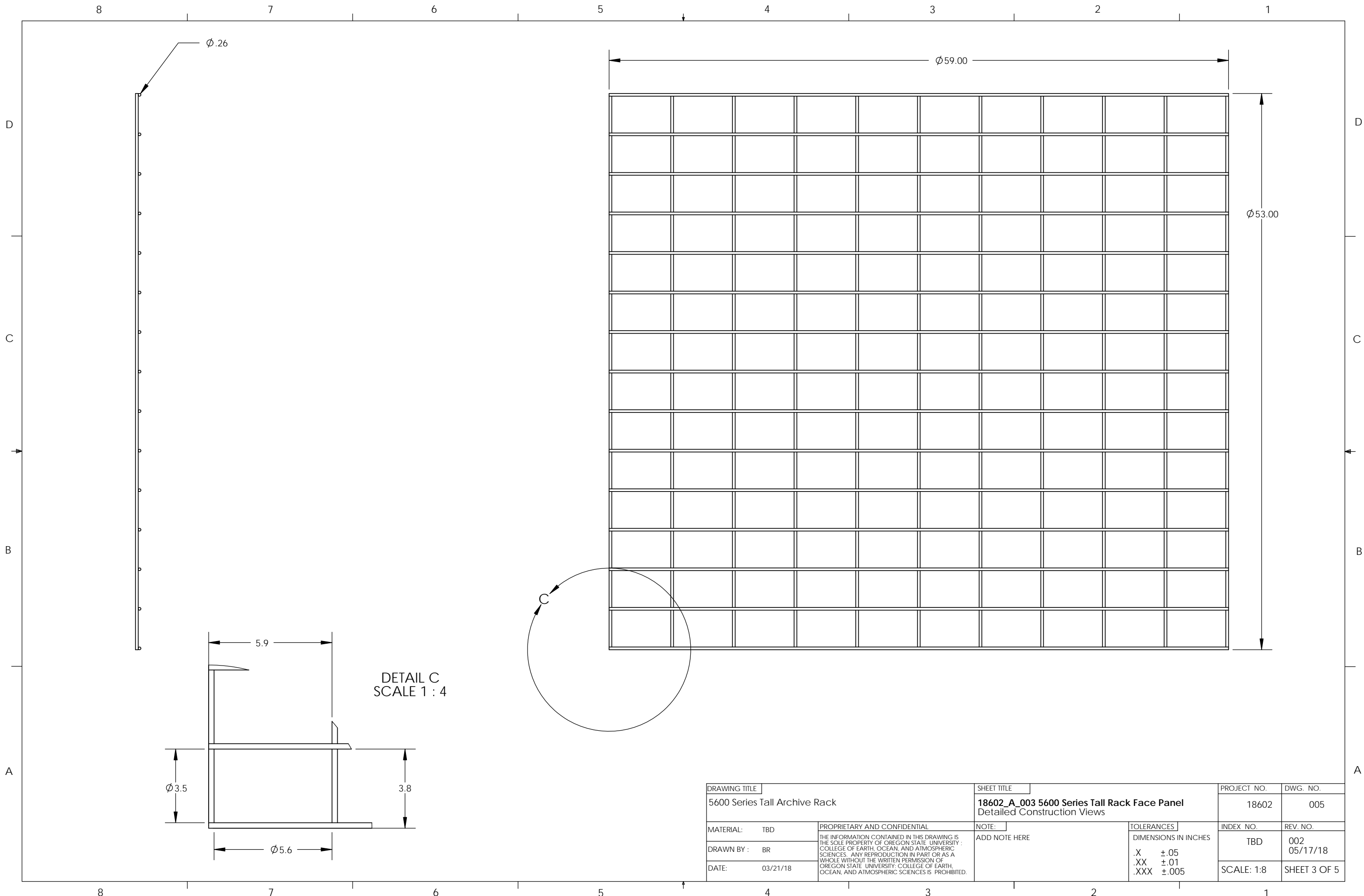
DETAIL B  
SCALE 1:1

D  
C  
B  
A

D  
C  
B  
A

8 7 6 5 4 3 2 1

DRAWING TITLE 5600Series Tall Archive Rack		SHEET TITLE Dimensioned Plan View and Construction Detail		PROJECT NO. 18602	DWG. NO. 005
MATERIAL: TBD	PROPRIETARY AND CONFIDENTIAL	NOTE: ADD NOTE HERE	TOLERANCES DIMENSIONS IN INCHES	INDEX NO. TBD	REV. NO. 001 04/04/18
DRAWN BY: BR	THE INFORMATION CONTAINED IN THIS DRAWING IS THE SOLE PROPERTY OF OREGON STATE UNIVERSITY; COLLEGE OF EARTH, OCEAN, AND ATMOSPHERIC SCIENCES. ANY REPRODUCTION IN PART OR AS A WHOLE WITHOUT THE WRITTEN PERMISSION OF OREGON STATE UNIVERSITY; COLLEGE OF EARTH, OCEAN, AND ATMOSPHERIC SCIENCES IS PROHIBITED.		.X ±.05 .XX ±.01 .XXX ±.005	SCALE: 1:12	SHEET 2 OF 5
DATE: 03/21/18					



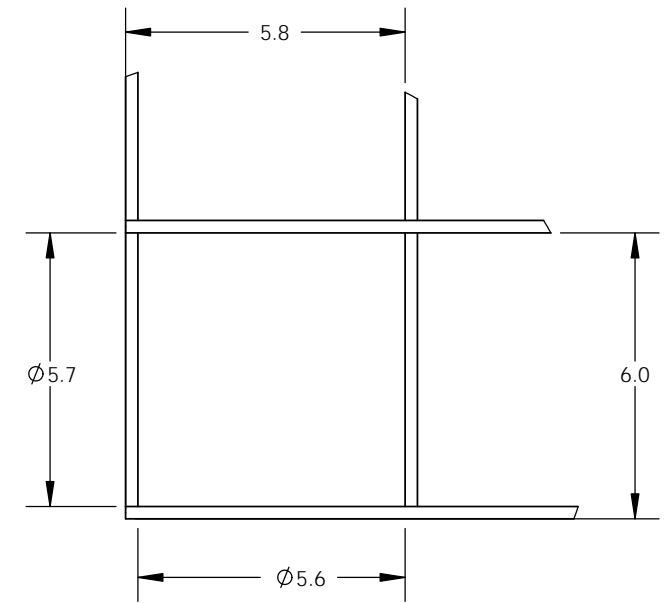
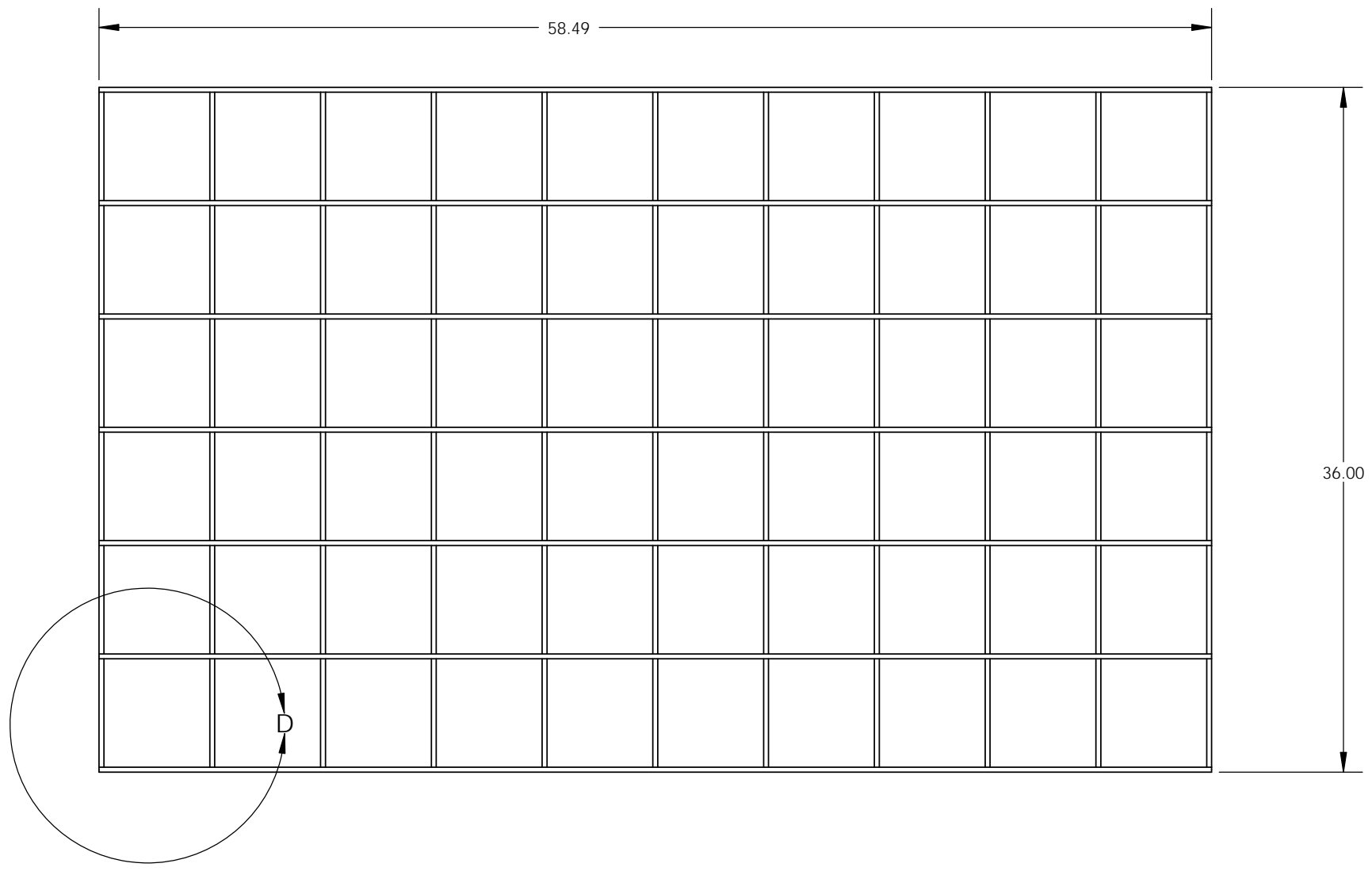
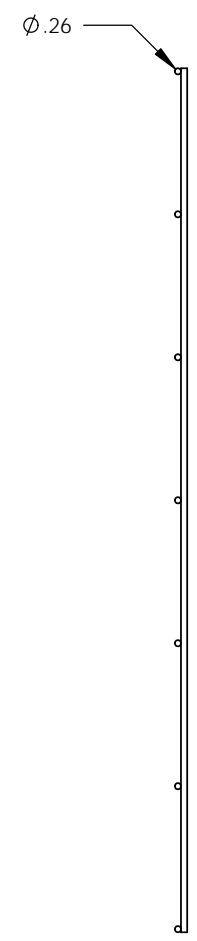
DETAIL C  
SCALE 1 : 4

DRAWING TITLE		SHEET TITLE		PROJECT NO.	DWG. NO.
5600 Series Tall Archive Rack		18602_A_003 5600 Series Tall Rack Face Panel Detailed Construction Views		18602	005
MATERIAL:	TBD	PROPRIETARY AND CONFIDENTIAL	NOTE:	INDEX NO.	REV. NO.
DRAWN BY :	BR	THE INFORMATION CONTAINED IN THIS DRAWING IS THE SOLE PROPERTY OF OREGON STATE UNIVERSITY ; COLLEGE OF EARTH, OCEAN, AND ATMOSPHERIC SCIENCES. ANY REPRODUCTION IN PART OR AS A WHOLE WITHOUT THE WRITTEN PERMISSION OF OREGON STATE UNIVERSITY; COLLEGE OF EARTH, OCEAN, AND ATMOSPHERIC SCIENCES IS PROHIBITED.	ADD NOTE HERE	TOLERANCES DIMENSIONS IN INCHES .X ±.05 .XX ±.01 .XXX ±.005	002 05/17/18
DATE:	03/21/18				SCALE: 1:8

8 7 6 5 4 3 2 1

D  
C  
B  
A

D  
C  
B  
A



DETAIL D  
SCALE 1 : 4

DRAWING TITLE		SHEET TITLE		PROJECT NO.	DWG. NO.
5600 Series Tall Archive Rack		18602_A_004 All Series Cap Panel Detailed Construction Views		18602	005
MATERIAL:	TBD	PROPRIETARY AND CONFIDENTIAL		INDEX NO.	REV. NO.
DRAWN BY :	BR	THE INFORMATION CONTAINED IN THIS DRAWING IS THE SOLE PROPERTY OF OREGON STATE UNIVERSITY. COLLEGE OF EARTH, OCEAN, AND ATMOSPHERIC SCIENCES. ANY REPRODUCTION IN PART OR AS A WHOLE WITHOUT THE WRITTEN PERMISSION OF OREGON STATE UNIVERSITY. COLLEGE OF EARTH, OCEAN, AND ATMOSPHERIC SCIENCES IS PROHIBITED.		TBD	002 05/17/18
DATE:	03/21/18			SCALE: 1:8	SHEET 4 OF 5
		NOTE:	TOLERANCES		
			DIMENSIONS IN INCHES		
			.X ±.05		
			.XX ±.01		
			.XXX ±.005		

8 7 6 5 4 3 2 1

8

7

6

5

4

3

2

1

D

D

C

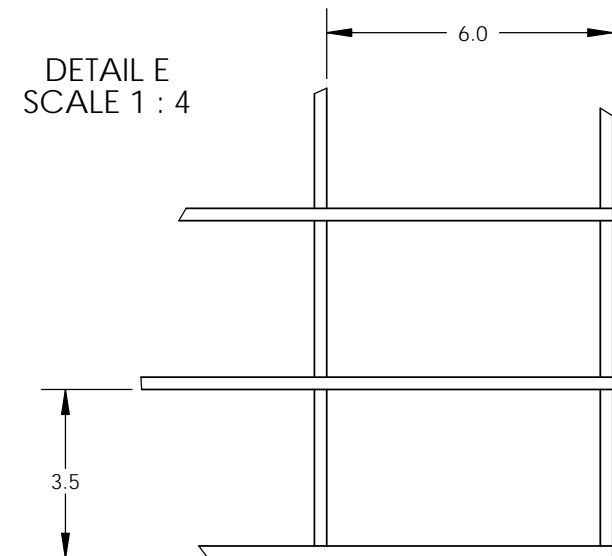
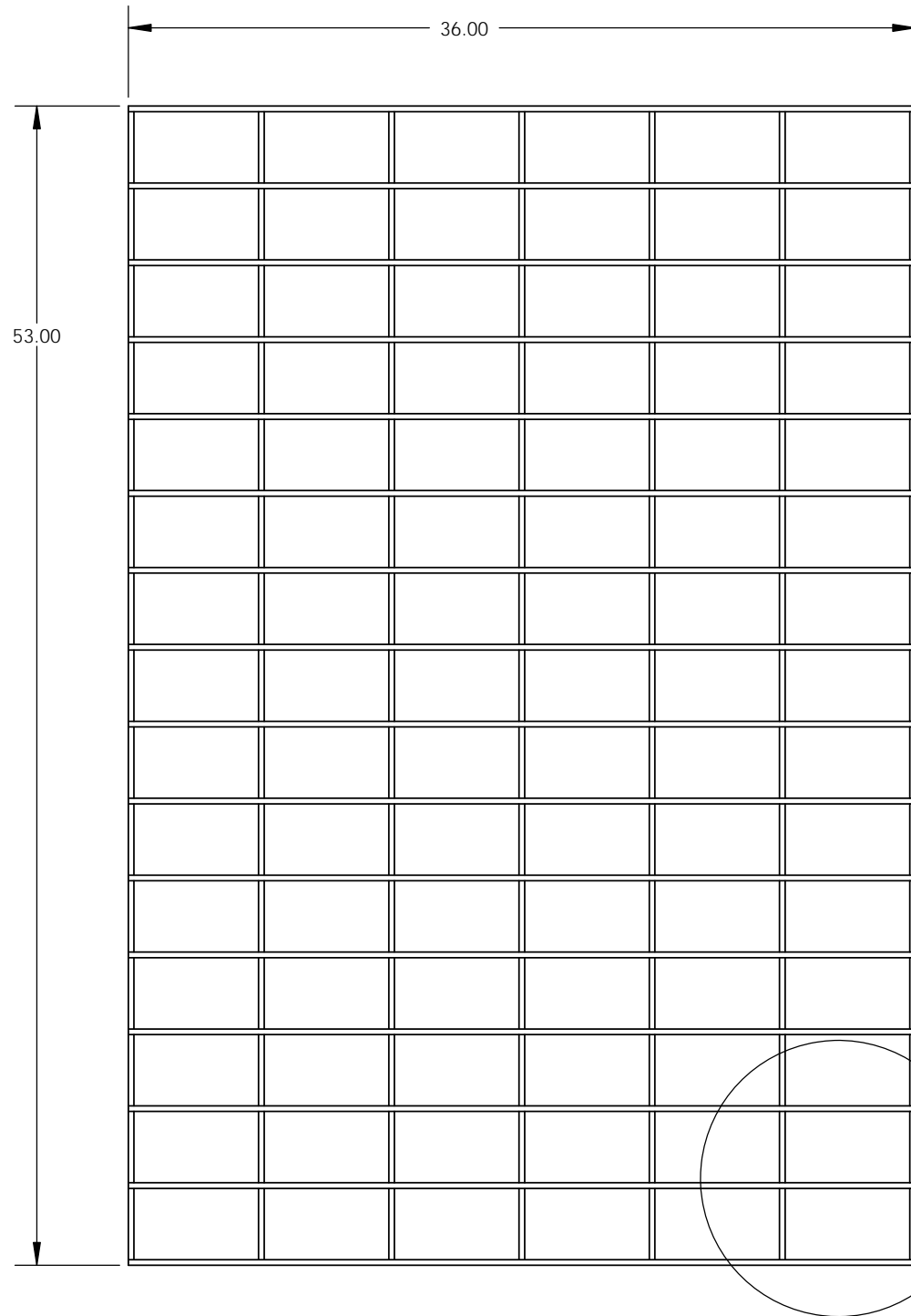
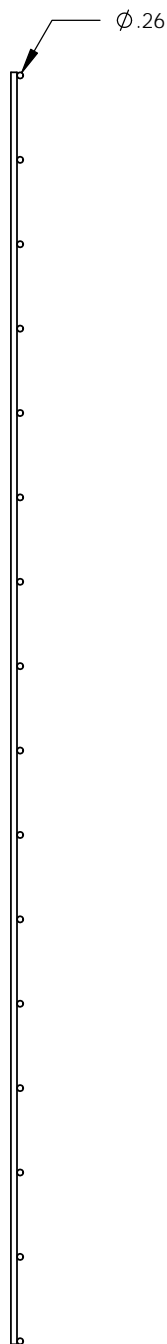
C

B

B

A

A



DRAWING TITLE		SHEET TITLE		PROJECT NO.	DWG. NO.
5600 Series Tall Archive Rack		18602_A_002 All Series Tall Rack Side Panel Detailed Construction Views		18602	005
MATERIAL:	TBD	PROPRIETARY AND CONFIDENTIAL THE INFORMATION CONTAINED IN THIS DRAWING IS THE SOLE PROPERTY OF OREGON STATE UNIVERSITY ; COLLEGE OF EARTH, OCEAN, AND ATMOSPHERIC SCIENCES. ANY REPRODUCTION IN PART OR AS A WHOLE WITHOUT THE WRITTEN PERMISSION OF OREGON STATE UNIVERSITY, COLLEGE OF EARTH, OCEAN, AND ATMOSPHERIC SCIENCES IS PROHIBITED.	NOTE:	INDEX NO.	REV. NO.
DRAWN BY :	BR		ADD NOTE HERE	TBD	002 05/17/18
DATE:	03/21/18			SCALE: 1:8	SHEET 5 OF 5
			TOLERANCES	DIMENSIONS IN INCHES	
				.X ±.05	
				.XX ±.01	
				.XXX ±.005	

8

7

6

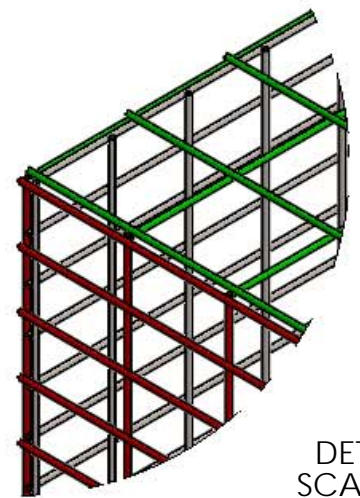
5

4

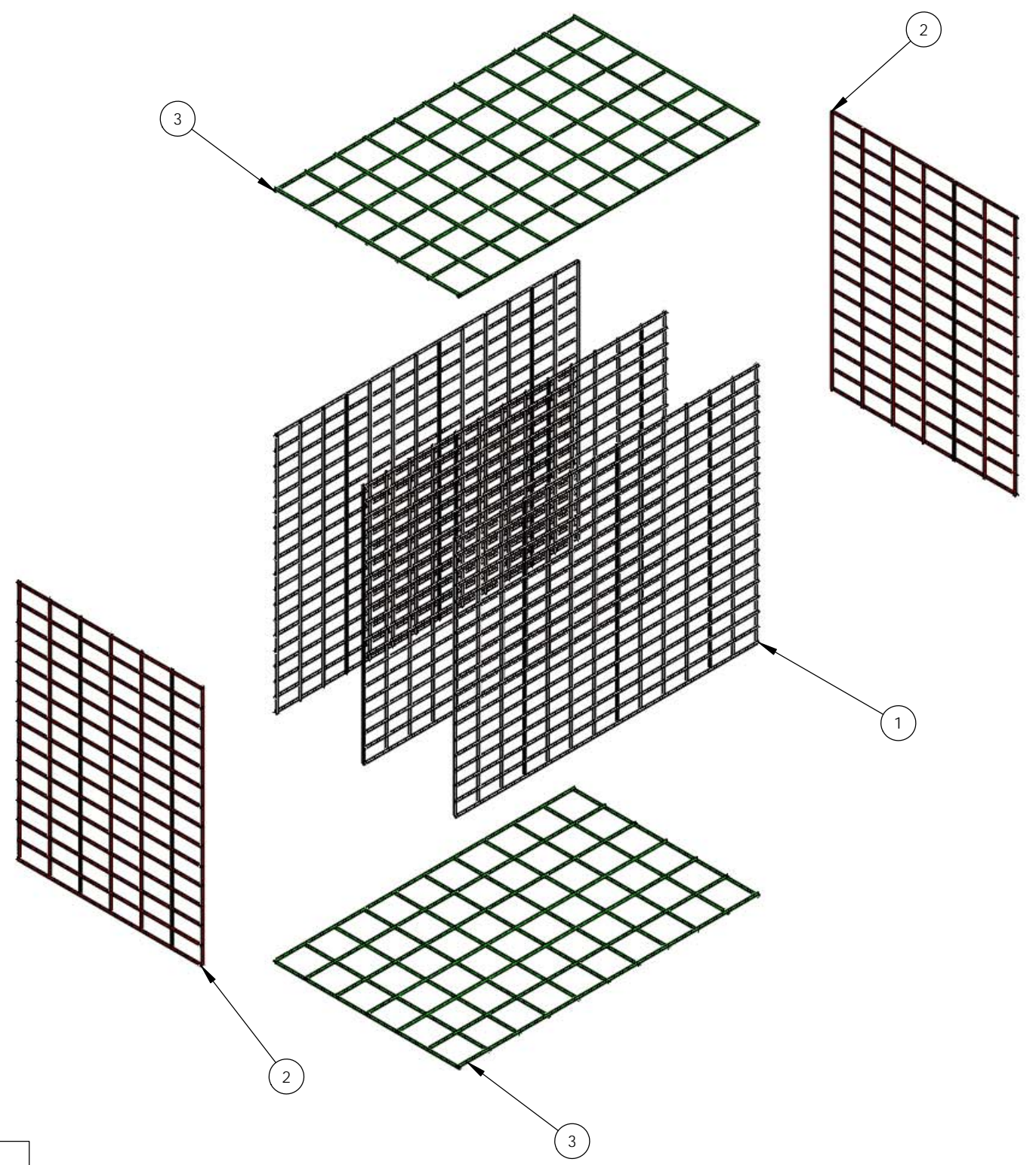
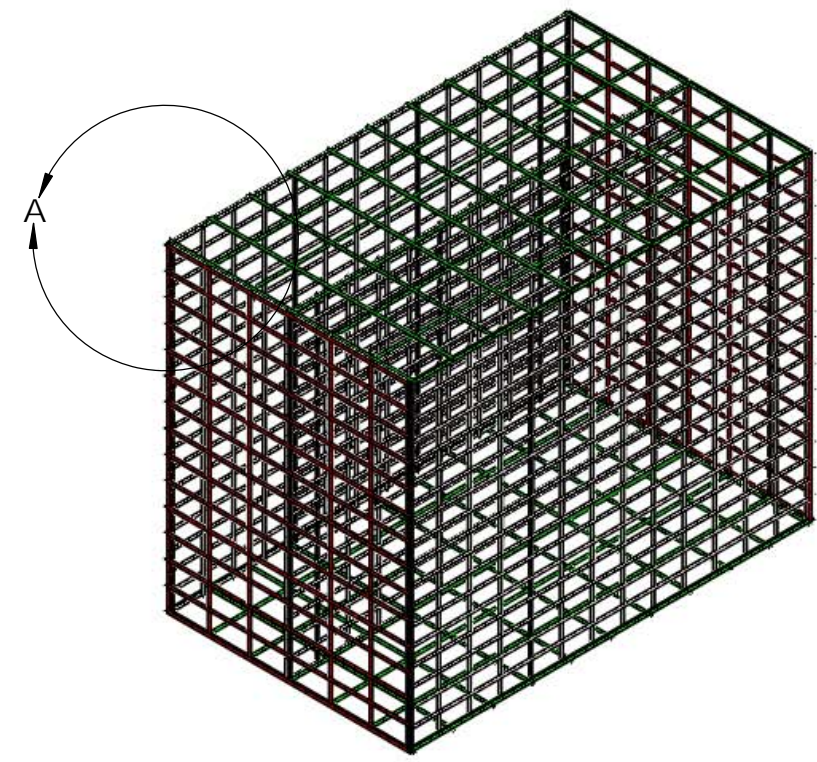
3

2

1



DETAIL A  
SCALE 1 : 8



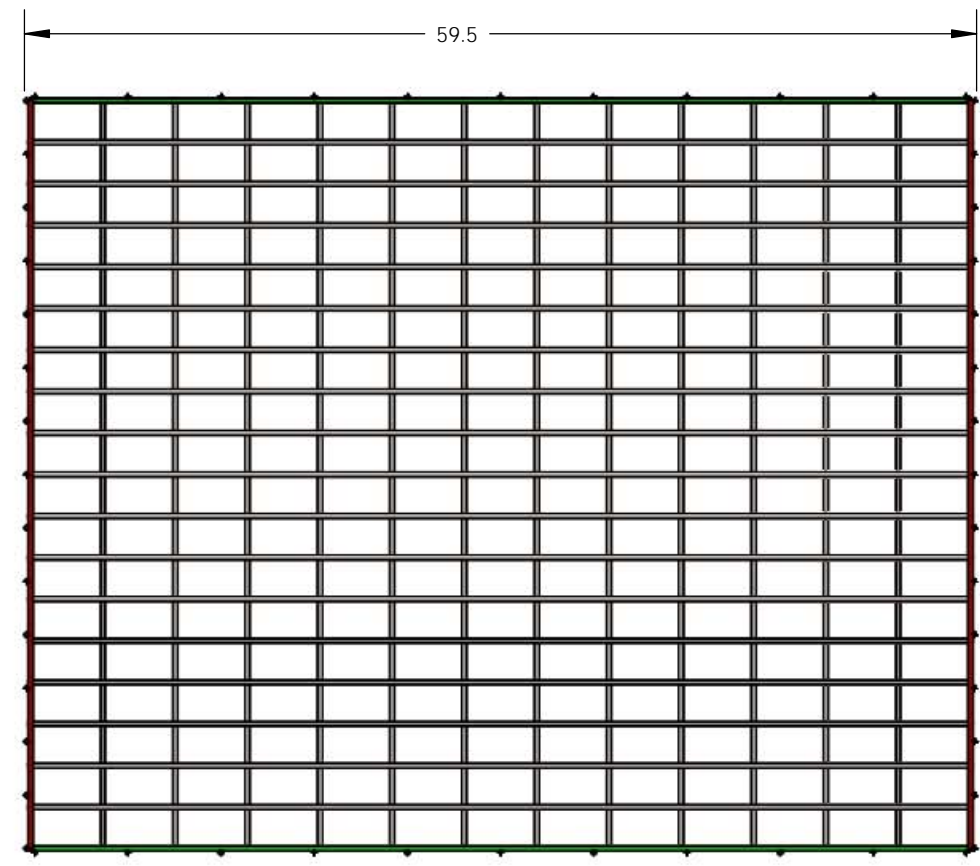
ITEM NO.	PART NUMBER	DETAIL LOCATION	QTY.
1	18602_A_014 3900 Series Short Rack Face Panel	Sheet 3	3
2	18602_A_012 All Series Short Rack Side Panel	Sheet 5	2
3	18602_A_004 All Series Cap Panel	Sheet 4	2

DRAWING TITLE		SHEET TITLE		PROJECT NO.	DWG. NO.
3900 Series Short Archive Rack		Isometric View, Exploded View ,and BOM		18602	002
MATERIAL:	TBD	PROPRIETARY AND CONFIDENTIAL	NOTE:	INDEX NO.	REV. NO.
DRAWN BY :	BR	THE INFORMATION CONTAINED IN THIS DRAWING IS THE SOLE PROPERTY OF OREGON STATE UNIVERSITY. COLLEGE OF EARTH, OCEAN, AND ATMOSPHERIC SCIENCES. ANY REPRODUCTION IN PART OR AS A WHOLE WITHOUT THE WRITTEN PERMISSION OF OREGON STATE UNIVERSITY, COLLEGE OF EARTH, OCEAN, AND ATMOSPHERIC SCIENCES IS PROHIBITED.	234 Openings 4.26" X 2.34" Corresponds to "Cage Style #3" Compatible with IODP and other small flat bottom D-tubes. Also compatible with small curved D-tubes. For use on top shelf of storage units.	TBD	002 05/17/18
DATE:	03/19/18			SCALE: 1:20	SHEET 1 OF 5
			TOLERANCES		
			DIMENSIONS IN INCHES		
			.X ±.05		
			.XX ±.01		
			.XXX ±.005		

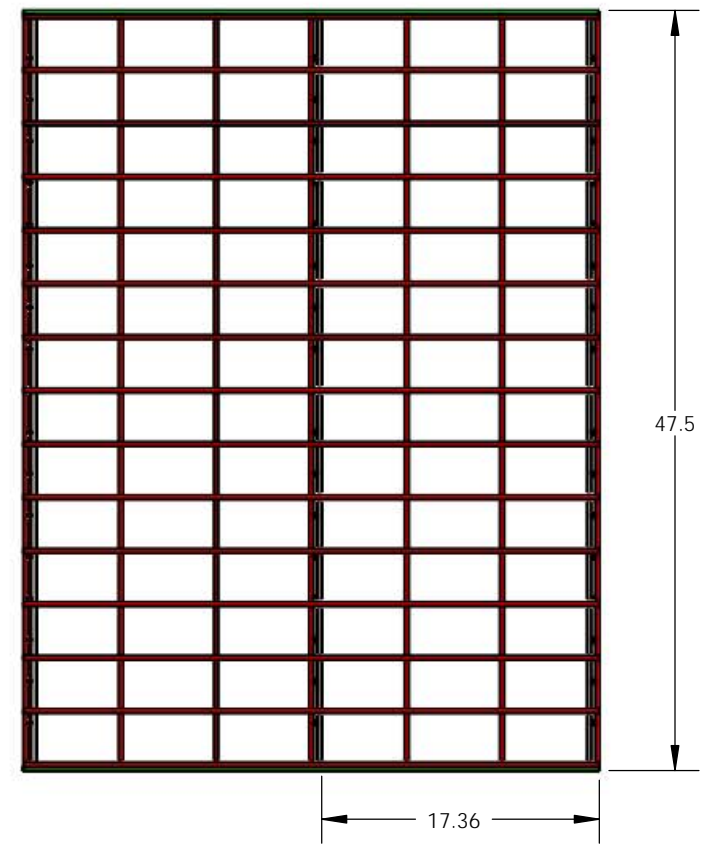


8 7 6 5 4 3 2 1

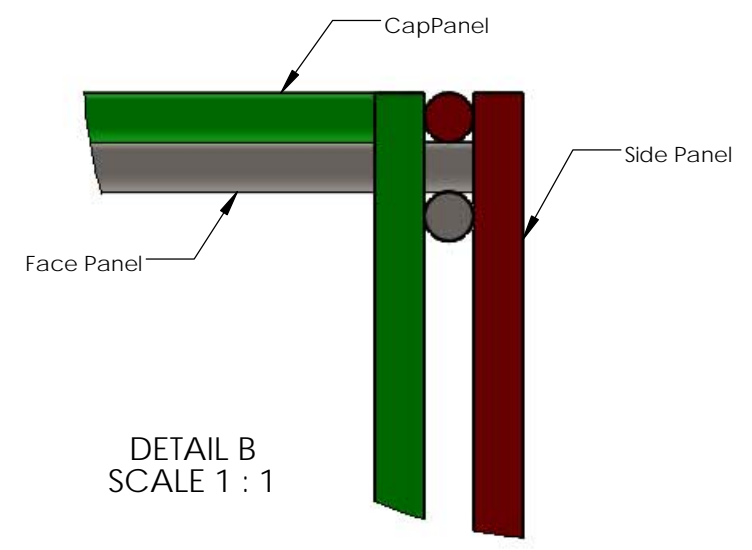
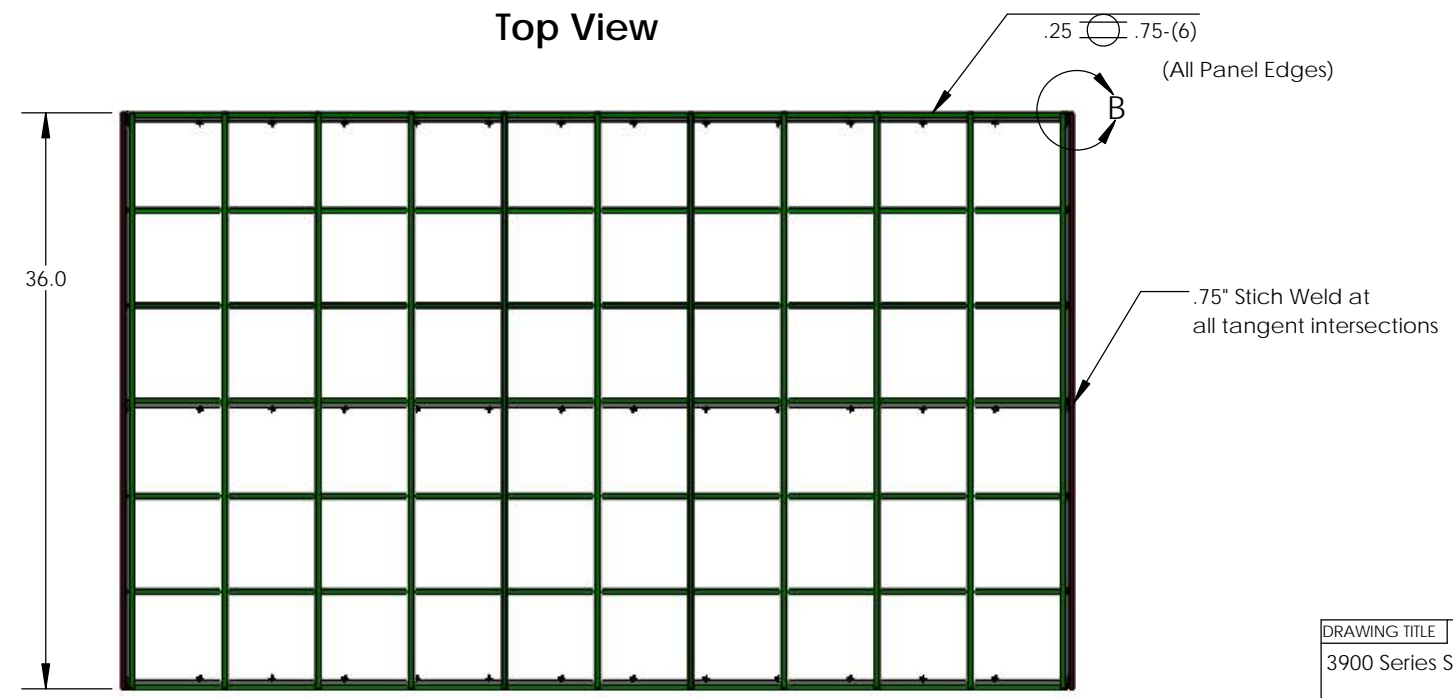
Front View



Side View



Top View



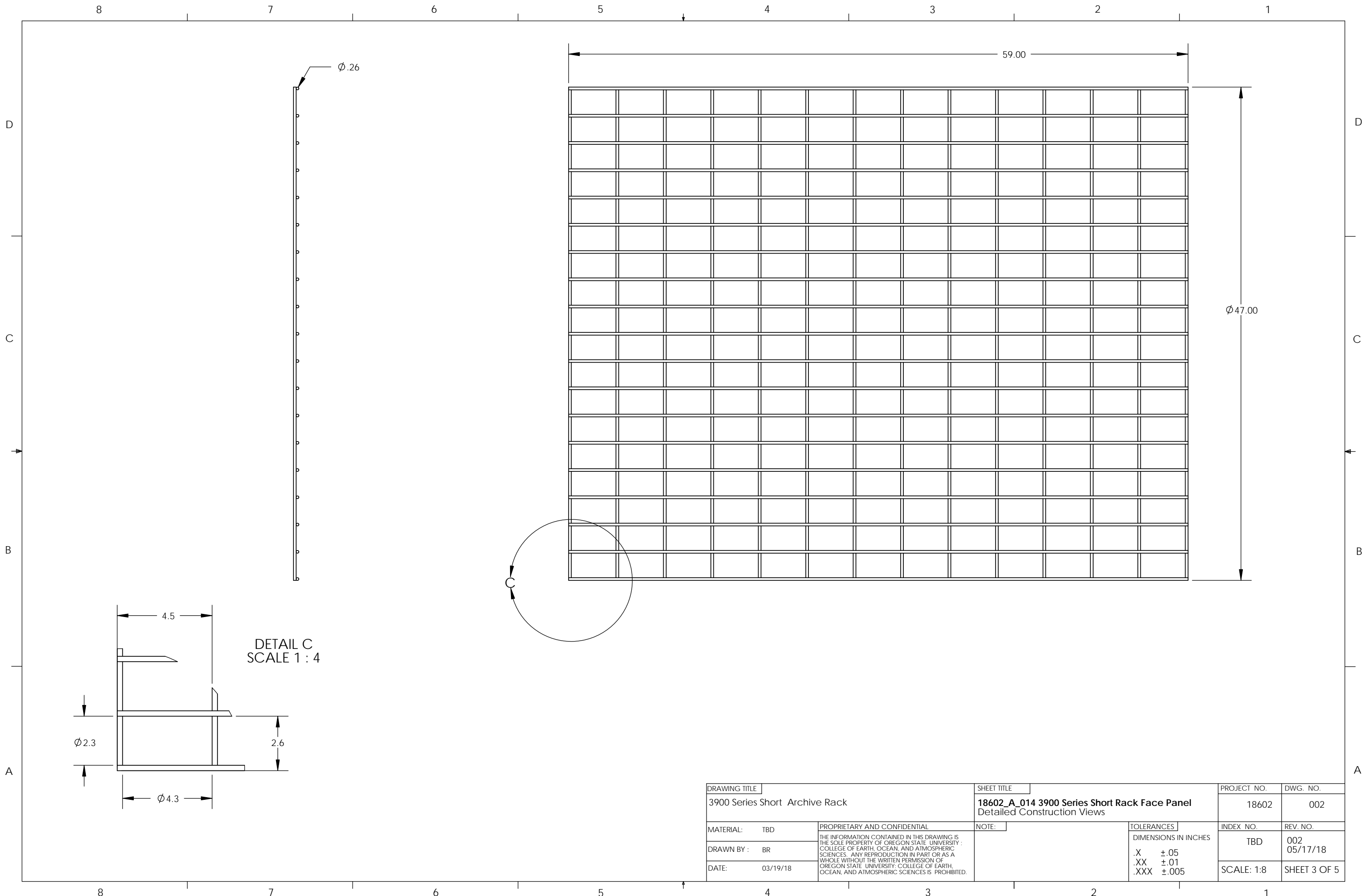
DETAIL B  
SCALE 1 : 1

VIEW -  
SCALE 1 : 12

DRAWING TITLE		SHEET TITLE		PROJECT NO.	DWG. NO.
3900 Series Short Archive Rack		Dimensioned Plan View and Constuction Detail		18602	002
MATERIAL:	TBD	PROPRIETARY AND CONFIDENTIAL	NOTE:	INDEX NO.	REV. NO.
DRAWN BY :	BR	THE INFORMATION CONTAINED IN THIS DRAWING IS THE SOLE PROPERTY OF OREGON STATE UNIVERSITY : COLLEGE OF EARTH, OCEAN, AND ATMOSPHERIC SCIENCES. ANY REPRODUCTION IN PART OR AS A WHOLE WITHOUT THE WRITTEN PERMISSION OF OREGON STATE UNIVERSITY: COLLEGE OF EARTH, OCEAN, AND ATMOSPHERIC SCIENCES IS PROHIBITED.	TOLERANCES DIMENSIONS IN INCHES .X ±.05 .XX ±.01 .XXX ±.005	TBD	002 05/17/18
DATE:	03/19/18			SCALE: 1:12	SHEET 2 OF 5

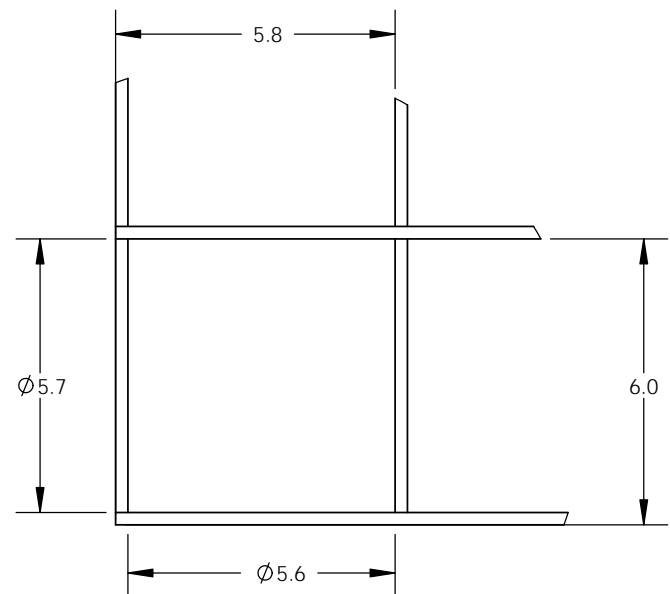
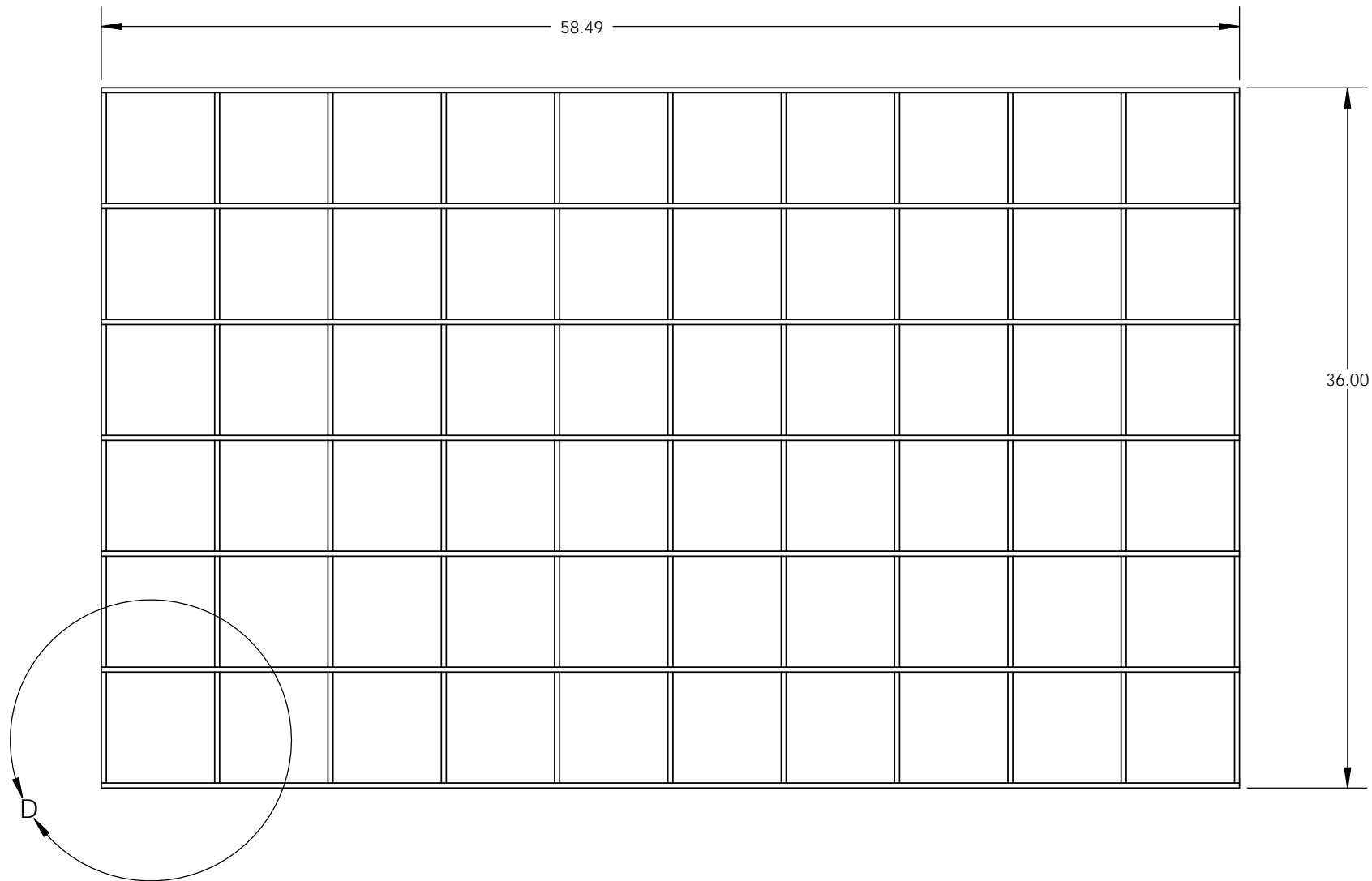
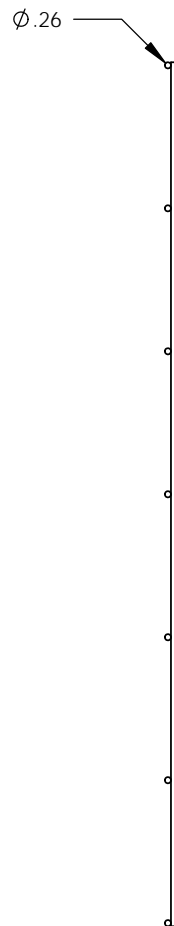
8 7 6 5 4 3 2 1





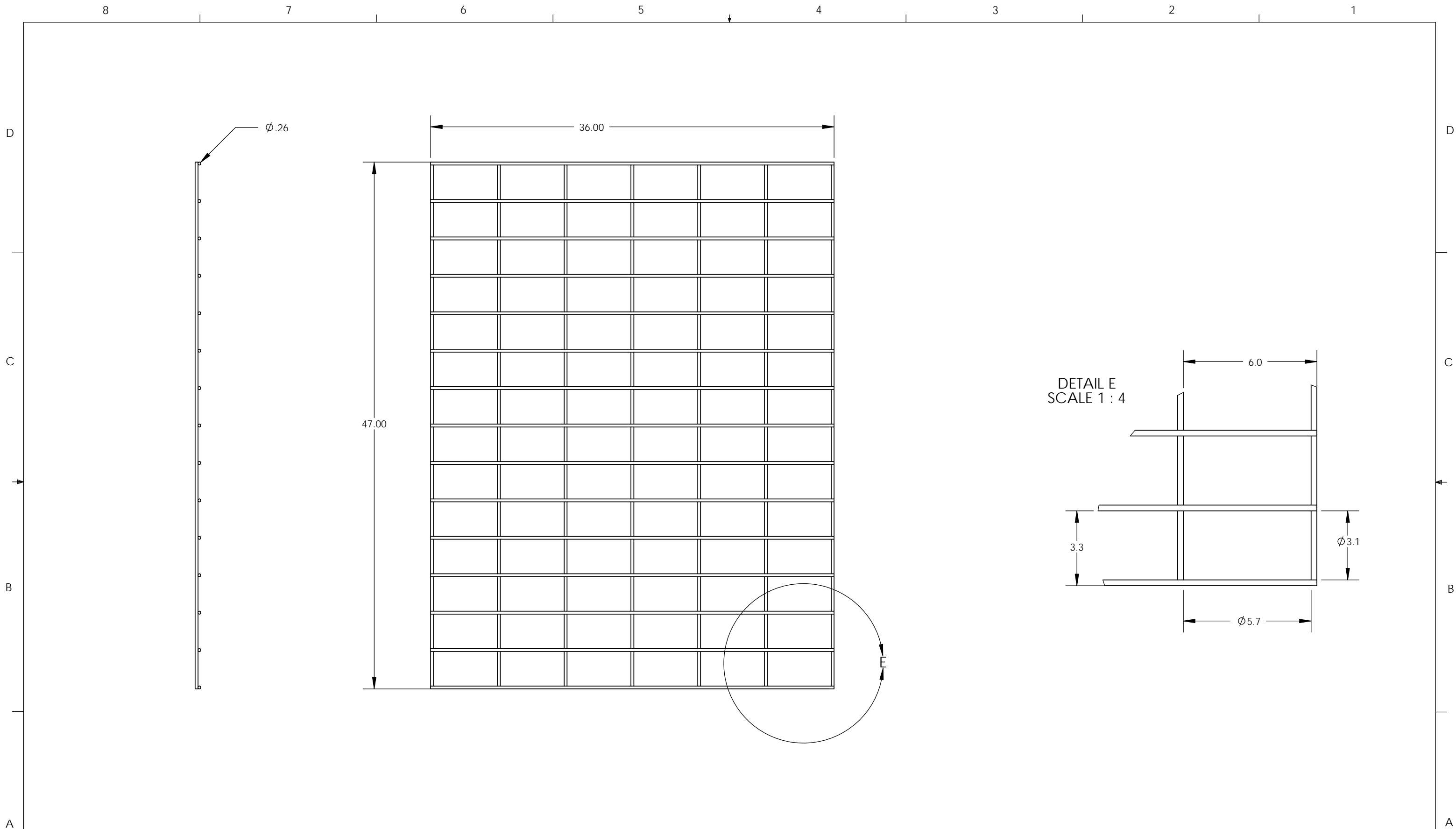
DETAIL C  
SCALE 1 : 4

DRAWING TITLE		SHEET TITLE		PROJECT NO.	DWG. NO.
3900 Series Short Archive Rack		18602_A_014 3900 Series Short Rack Face Panel Detailed Construction Views		18602	002
MATERIAL:	TBD	PROPRIETARY AND CONFIDENTIAL	NOTE:	INDEX NO.	REV. NO.
DRAWN BY :	BR	THE INFORMATION CONTAINED IN THIS DRAWING IS THE SOLE PROPERTY OF OREGON STATE UNIVERSITY ; COLLEGE OF EARTH, OCEAN, AND ATMOSPHERIC SCIENCES. ANY REPRODUCTION IN PART OR AS A WHOLE WITHOUT THE WRITTEN PERMISSION OF OREGON STATE UNIVERSITY; COLLEGE OF EARTH, OCEAN, AND ATMOSPHERIC SCIENCES IS PROHIBITED.	TOLERANCES DIMENSIONS IN INCHES .X ±.05 .XX ±.01 .XXX ±.005	TBD	002 05/17/18
DATE:	03/19/18			SCALE: 1:8	SHEET 3 OF 5



DETAIL D  
SCALE 1 : 4

DRAWING TITLE		SHEET TITLE		PROJECT NO.	DWG. NO.
3900 Series Short Archive Rack		18602_A_004 All Series Cap Panel Detailed Construction Views		18602	002
MATERIAL:	TBD	PROPRIETARY AND CONFIDENTIAL	NOTE:	INDEX NO.	REV. NO.
DRAWN BY :	BR	THE INFORMATION CONTAINED IN THIS DRAWING IS THE SOLE PROPERTY OF OREGON STATE UNIVERSITY. COLLEGE OF EARTH, OCEAN, AND ATMOSPHERIC SCIENCES. ANY REPRODUCTION IN PART OR AS A WHOLE WITHOUT THE WRITTEN PERMISSION OF OREGON STATE UNIVERSITY, COLLEGE OF EARTH, OCEAN, AND ATMOSPHERIC SCIENCES IS PROHIBITED.	TOLERANCES DIMENSIONS IN INCHES .X ±.05 .XX ±.01 .XXX ±.005	TBD	002 05/17/18
DATE:	03/19/18			SCALE: 1:8	SHEET 4 OF 5



DRAWING TITLE		SHEET TITLE		PROJECT NO.	DWG. NO.
3900 Series Short Archive Rack		18602_A_012 All Series Short Rack Side Panel Detailed Construction Views		18602	002
MATERIAL:	TBD	PROPRIETARY AND CONFIDENTIAL	NOTE:	INDEX NO.	REV. NO.
DRAWN BY :	BR	THE INFORMATION CONTAINED IN THIS DRAWING IS THE SOLE PROPERTY OF OREGON STATE UNIVERSITY ; COLLEGE OF EARTH, OCEAN, AND ATMOSPHERIC SCIENCES. ANY REPRODUCTION IN PART OR AS A WHOLE WITHOUT THE WRITTEN PERMISSION OF OREGON STATE UNIVERSITY; COLLEGE OF EARTH, OCEAN, AND ATMOSPHERIC SCIENCES IS PROHIBITED.	TOLERANCES	TBD	002 05/17/18
DATE:	03/19/18			DIMENSIONS IN INCHES	SCALE: 1:8
			.X ±.05 .XX ±.01 .XXX ±.005		