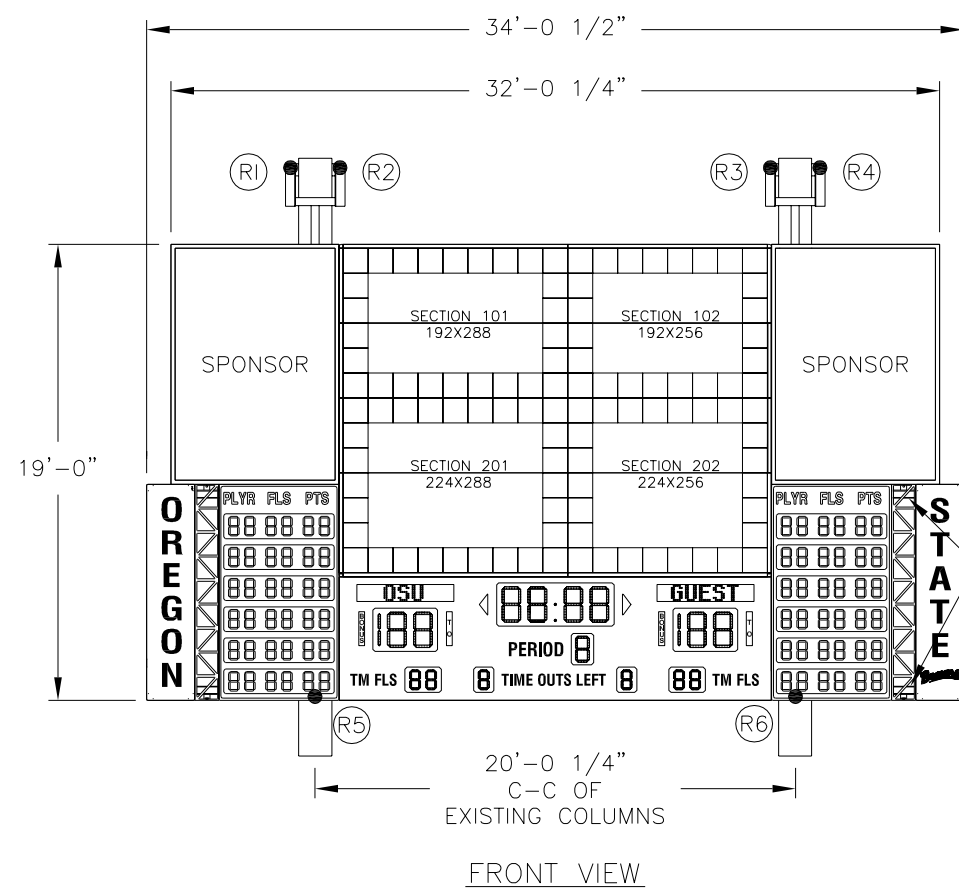
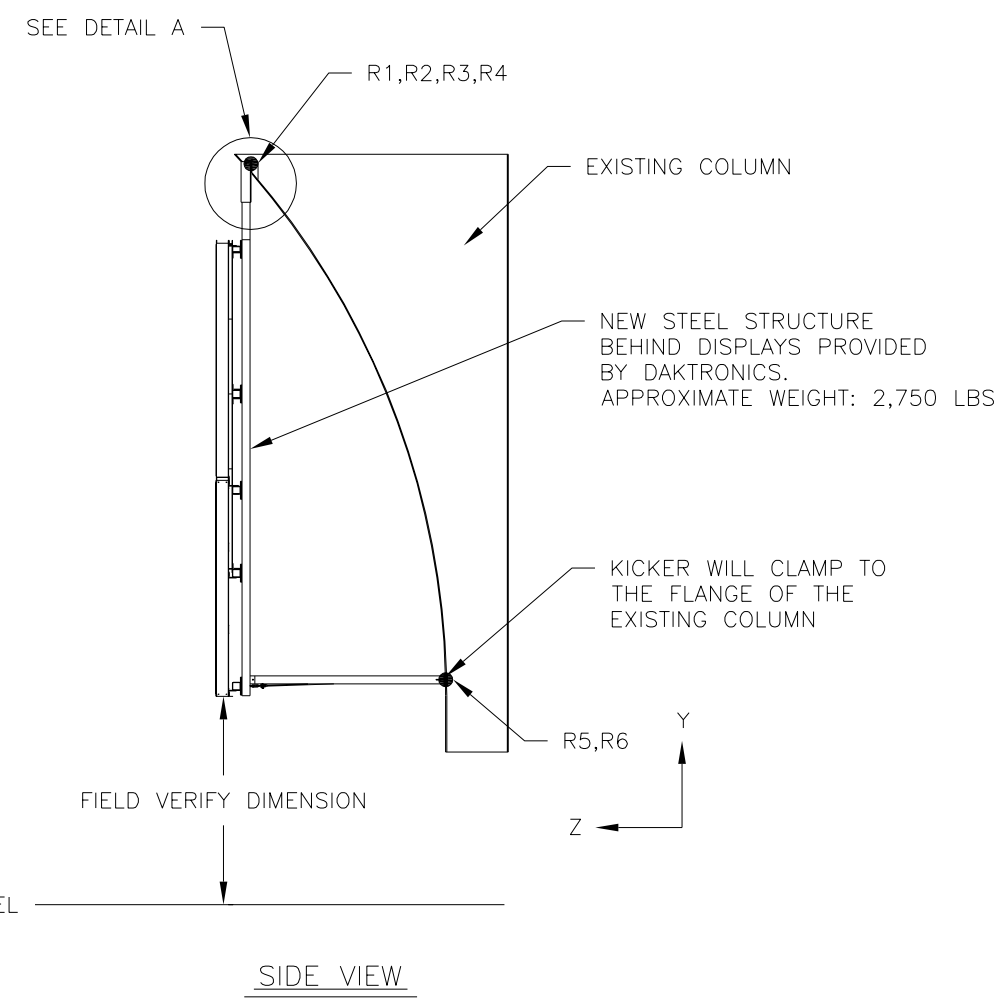


QUANTITY OF TWO ENDWALL DISPLAYS IN FACILITY WITH MOUNTING TYPICAL AT EACH LOCATION



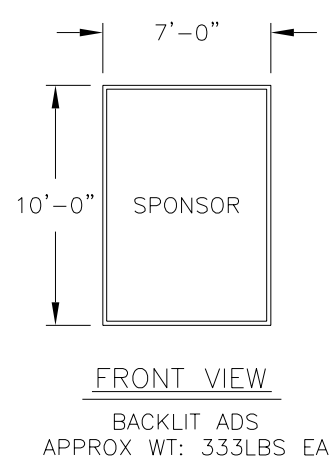
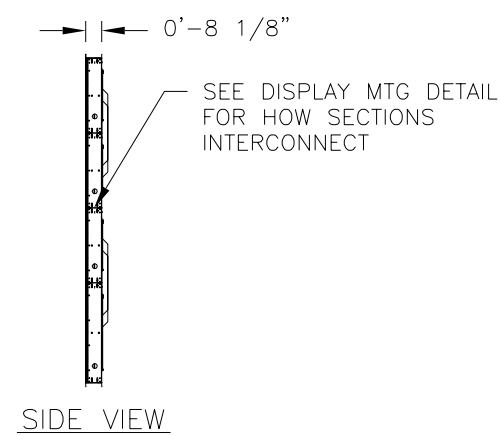
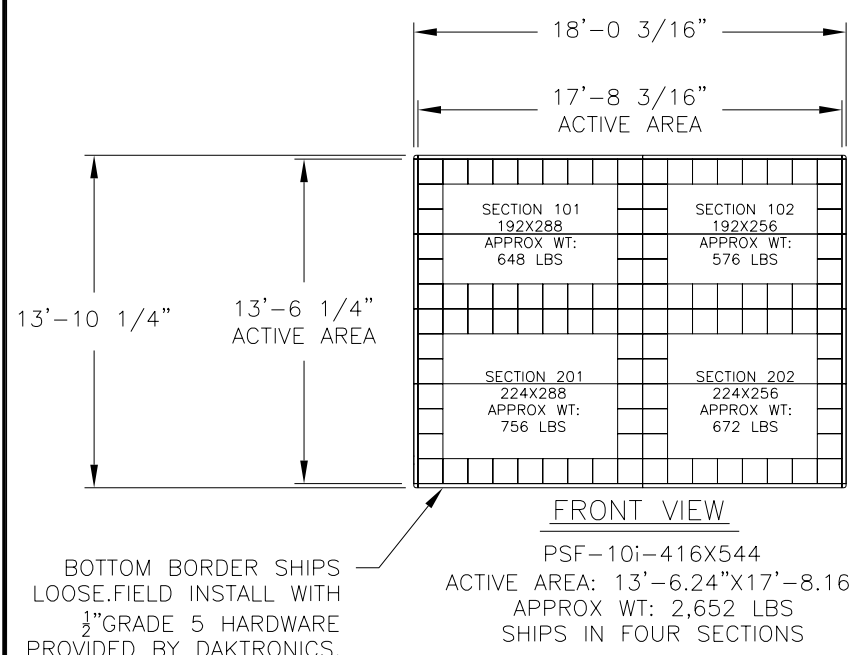
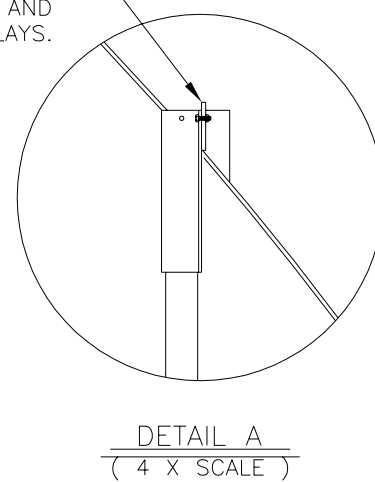
STRUCTURE WILL BE VISIBLE THROUGH DECORATIVE ACCENT TRUSS



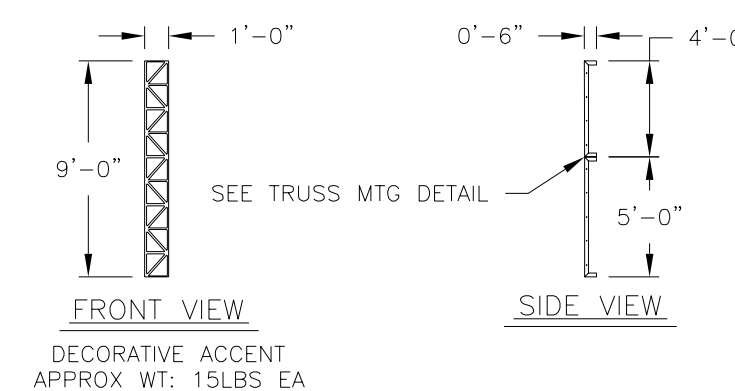
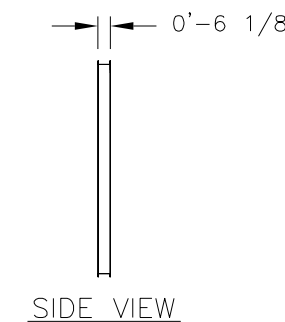
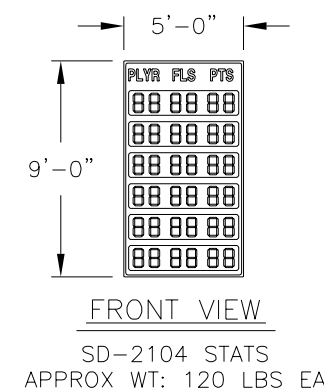
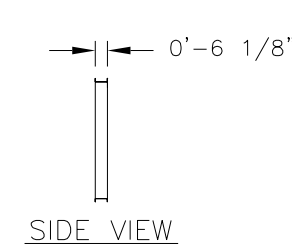
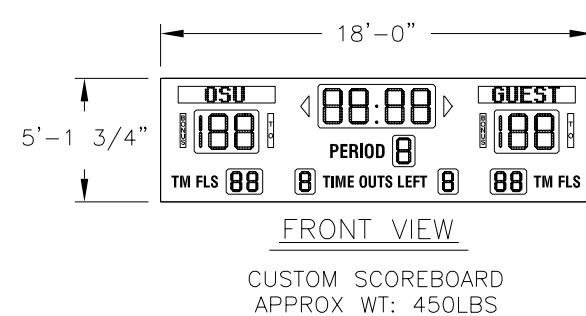
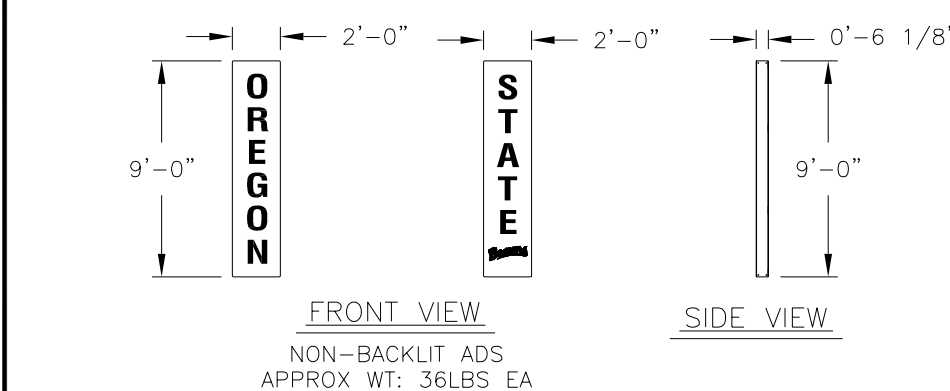
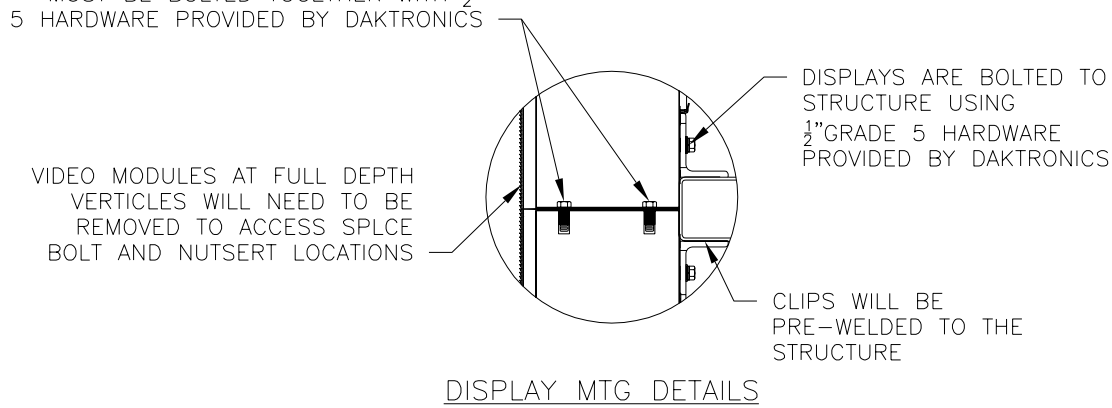
| REACTION TABLE (KIPS) | | | | | | | | | |
|-----------------------|-----------|------|---|----------------|-------|------|-------------------------|-------|-------|
| NODE | DEAD LOAD | | | 5psf WIND LOAD | | | TRANSVERSE SEISMIC LOAD | | |
| | X | Y | Z | X | Y | Z | X | Y | Z |
| 1 | -0.39 | 1.51 | 0 | -0.03 | 0.12 | 0.13 | -0.39 | 1.36 | 0 |
| 2 | 0.29 | 1.31 | 0 | 0.03 | 0.12 | 0.46 | -0.39 | 1.33 | 0 |
| 3 | -0.29 | 1.31 | 0 | -0.03 | 0.12 | 0.46 | -0.34 | 1.2 | 0 |
| 4 | 0.39 | 1.52 | 0 | 0.03 | 0.12 | 0.13 | -0.34 | -1.25 | 0 |
| 5 | 0 | 0.04 | 0 | -0.05 | -0.25 | 1.11 | -1.51 | 0 | 0.65 |
| 6 | 0 | 0.04 | 0 | 0.05 | -0.25 | 1.11 | -0.04 | 0 | -0.65 |

NOTE: GENERAL LOADS ARE UNFACTORED.

HOLE WILL BE DRILLED INTO EXISTING MOUNTING STRUCTURE TO HANG NEW STRUCTURE AND DISPLAYS.



DURING INSTALLATION PRO STAR SECTIONS MUST BE BOLTED TOGETHER WITH 1/2" GRADE 5 HARDWARE PROVIDED BY DAKTRONICS



NOTES:

- 1.0 REFERENCE
 - 1.1 REFER TO DAKTRONICS PROPOSAL DRAWING FOR DISPLAY COMPONENT SPECIFICATIONS.
 - 1.2 REFER TO DAKTRONICS SYSTEM RISER DIAGRAM FOR POWER AND SIGNAL SPECIFICATIONS.
 - 1.3 REFER TO DAKTRONICS OVERALL SYSTEM RISER DIAGRAM FOR OVERALL ELECTRICAL AND SIGNAL LAYOUTS.
- 2.0 GENERAL NOTES
 - 2.1 ALL DIMENSIONS IN FEET AND INCHES. DIMENSIONS ARE APPROXIMATE AND SUBJECT TO CHANGE DUE TO DETAILED DESIGN CONSIDERATIONS.
 - 2.2 PAINT PLAN:
DISPLAY CABINETS:
VISIBLE STRUCTURE:
- 3.0 DISPLAY NOTES
 - 3.1 DAKTRONICS DISPLAYS ARE ALL ALUMINUM CONSTRUCTION.
 - 3.2 DAKTRONICS DISPLAYS ARE FRONT SERVICE.
 - 3.3 LOAD CENTERS AND SIGNAL DISTRIBUTION IS REMOTELY MOUNTED.
- 4.0 STRUCTURAL NOTES
 - 4.1 REFER TO ITEM SPECIFIC NOTES FOR WEIGHT ESTIMATES PER ITEM.
 - 4.2 ANY NON-DAKTRONICS SUPPLIED EQUIPMENT SPECIFICATIONS MUST BE SUBMITTED TO DAKTRONICS PRIOR TO DISPLAY FINAL DESIGN.
 - 4.3 WEIGHT ALLOWANCE INCLUDE ALL EQUIPMENT AND ACCESSORIES NECESSARY FOR SAFELY MOUNTING THE EQUIPMENT TO THE DISPLAY STRUCTURE.
 - 4.4 SUPPORT STRUCTURE IS STEEL.
 - 4.5 ALL STRUCTURAL STEEL SHALL BE ASTM A36 (36KSI), EXCEPT:
-TUBING SHALL BE A500-B (46KSI)
-ROUND PIPE SHALL BE A53-GRADE "B" TYPE E OR S (35 KSI)
-WIDE FLANGE SHAPES SHALL BE A572-GRADE 50 (50 KSI)
 - 4.6 ALL ANCHOR HARDWARE SHALL BE PROVIDED BY DAKTRONICS SUBCONTRACTOR.
 - 4.7 FABRICATION AND ERECTION SHALL CONFORM TO THE LATEST EDITION OF AISC SPECIFICATIONS.
 - 4.8 DAKTRONICS DESIGNED STRUCTURE HARDWARE DOES NOT INCLUDE ANY TENSION CONTROL HARDWARE. TORQUE ON BOLTS TO FOLLOW THE "TURN OF THE NUT METHOD" OF TIGHTENING, UNLESS OTHERWISE NOTED.
- 5.0 PROJECT RESPONSIBILITIES
 - 5.1 ALL ON-SITE WORK TO BE DONE IN ACCORDANCE WITH OSHA AND ALL LOCAL CODES THAT APPLY.
 - 5.2 DAKTRONICS SUBCONTRACTORS RESPONSIBLE FOR JOBSITE SAFETY.
 - 5.3 DAKTRONICS SUBCONTRACTORS ARE SOLELY RESPONSIBLE FOR THE DESIGN AND INSTALLATION OF ALL TEMPORARY BRACING AND OTHER ELEMENTS AND EQUIPMENT NECESSARY FOR A SAFE INSTALLATION.
 - 5.4 EACH SUBCONTRACTOR IS RESPONSIBLE FOR THE REMOVAL AND DISPOSAL OF WASTE MATERIALS ON THE JOBSITE.
 - 5.5 DAKTRONICS AND OWNERS SUBCONTRACTORS SHALL VERIFY ALL EXISTING DIMENSIONS AND CONDITIONS PRIOR TO INSTALLATION.
 - 5.6 REFER TO STANDARD FORM AGREEMENT BETWEEN CONTRACTOR AND SUBCONTRACTOR (AIA-A401) AND ATTACHED DOCUMENTS FOR DETAILED SCOPE OF WORK AND RESPONSIBILITY.
- 6.0 VENTILATION NOTES
 - 6.1 THE AIR INTAKE AND EXHAUST HOODS ON THE REAR OF THE DISPLAY CANNOT BE OBSTRUCTED.
 - 6.2 THE VENTILATION INTAKES ARE FILTERED. FILTERS WILL NEED TO BE PERIODICALLY CLEANED IN ORDER TO PROVIDE THE PROPER DISPLAY VENTILATION. REFER TO THE MAINTENANCE SCHEDULE FOR THE RECOMMENDED CLEANING SCHEDULE.

OREGON
STATE
UNIVERSITY

CORVALLIS, OR

SUBMITTAL APPROVAL

APPROVED
 APPROVED AS NOTED
 APPROVED AS NOTED & RESUBMIT

COMPANY: _____
 SIGNED: _____
 TITLE: _____ DATE: _____

SHEET 301

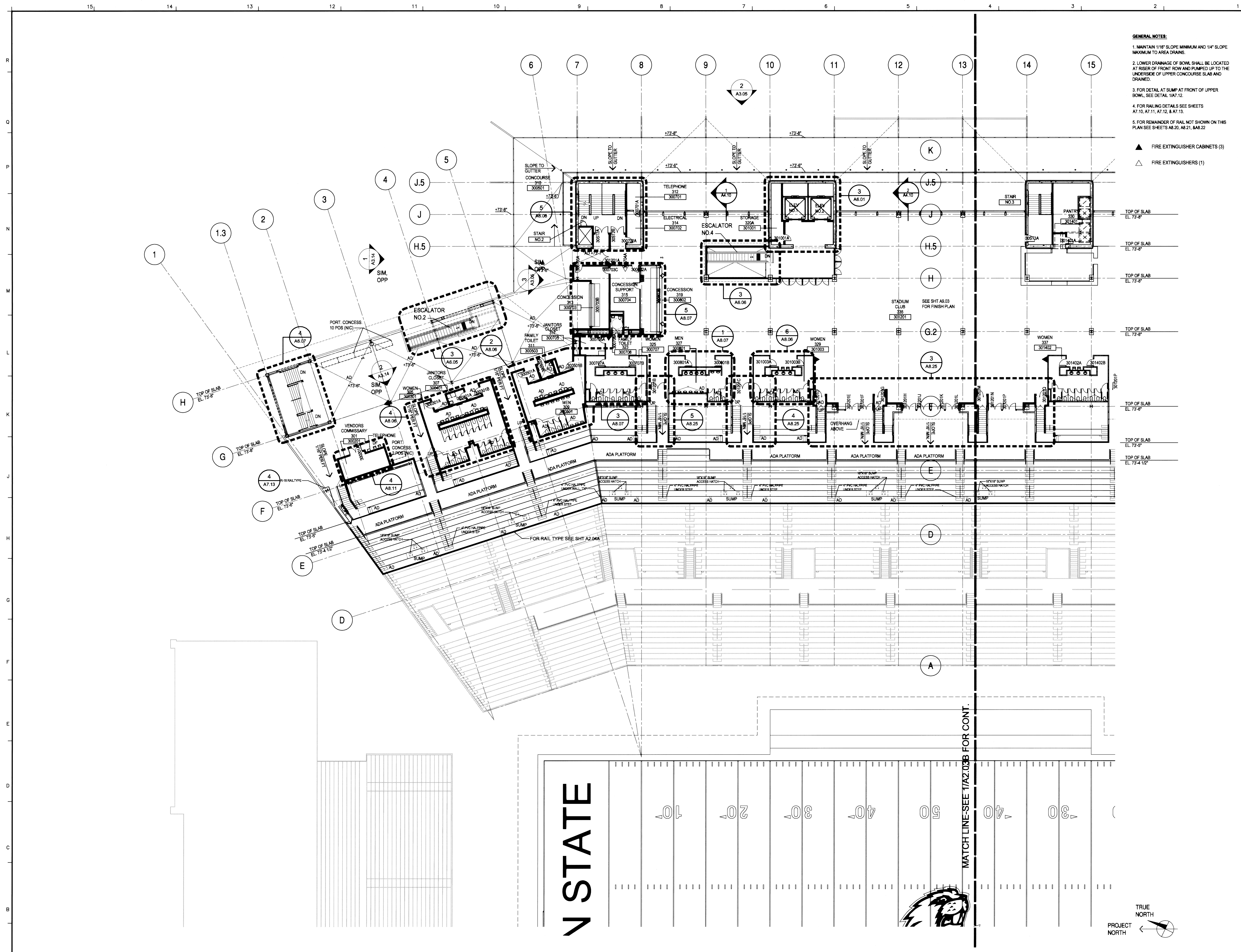
THE CONCEPTS EXPRESSED AND DETAILS SHOWN ON THIS DRAWING ARE CONFIDENTIAL AND PROPRIETARY. DO NOT REPRODUCE BY ANY MEANS, INCLUDING ELECTRONICALLY, WITHOUT THE EXPRESSED WRITTEN CONSENT OF DAKTRONICS, INC. COPYRIGHT 2008 DAKTRONICS, INC.

DAKTRONICS, INC. BROOKINGS, SD 57006

PROJ: OREGON STATE UNIVERSITY
 TITLE: SHOP DRAWING; PSF-101-416X544 ENDWALL
 DES. BY: JHEINEM DRAWN BY: JHEINEM DATE: 01 AUG 08

| REV. | DATE | DESCRIPTION | BY | APPR. |
|------|-----------|---|-----|-------|
| 02 | 17 OCT 08 | UPDATED STRUCTURE LAYOUT & REACTION TABLE DUE TO FINAL DESIGN CONSIDERATIONS | ALG | |
| 01 | 27 AUG 08 | CORRECTED PIXEL HEIGHT TEXT IN FRONT VIEW UPDATED STRUCTURE LAYOUT ADDED REACTION TABLE | JPH | |

SCALE: 1/8"=1' 15877-E10C-601346



- GENERAL NOTES:**
1. MAINTAIN 1/8" SLOPE MINIMUM AND 1/4" SLOPE MAXIMUM TO AREA DRAINS.
 2. LOWER DRAINAGE OF BOWL SHALL BE LOCATED AT RISER OF FRONT ROW AND PUMPED UP TO THE UNDERSIDE OF UPPER CONCOURSE SLAB AND DRAINED.
 3. FOR DETAIL AT SLUMP AT FRONT OF UPPER BOWL, SEE DETAIL 1/A7.12.
 4. FOR RAILING DETAILS SEE SHEETS A7.10, A7.11, A7.12, & A7.13.
 5. FOR REMAINDER OF RAIL NOT SHOWN ON THIS PLAN SEE SHEETS A8.20, A8.21, & A8.22.
- ▲ FIRE EXTINGUISHER CABINETS (3)
 - △ FIRE EXTINGUISHERS (1)

HNTB

Oregon Architecture, P.C.
One Bunker Hill
601 West Fifth Street, Suite 1010
Los Angeles, CA 90071
Phone 213.403.1000
Fax 213.403.1001

REGISTERED ARCHITECT
STATE OF OREGON

| REVISION | DATE | DESCRIPTION |
|----------|------|-------------|
| △ | | |
| △ | | |
| △ | | |
| △ | | |

RESER STADIUM EXPANSION
OREGON STATE UNIVERSITY
CORVALLIS, OREGON



RECORD SET

| DATE | 12/04/05 | |
|-------------|------------|-------------|
| ISSUED FOR: | RECORD SET | |
| PROJECT NO. | 36965 | |
| DRAWN BY | | |
| CHECKED BY | | |
| APPROVED BY | | |
| REVISION | DATE | DESCRIPTION |
| △ | 12/06/04 | CCD #8 |
| △ | | |
| △ | | |
| △ | | |

SHEET TITLE & NUMBER
**ENLARGED FLOOR PLAN
CLUB/UPPER
CONCOURSE (300)**
A2.03A
SHEET OF
Copyright HNTB 2004

1 ENLARGED FLOOR PLAN - CLUB/UPPER CONCOURSE
1/16"=1'-0"

SHEET NOTES
 114 NORTH ENTRANCE ARCH. STRUCT. & M.E.P. SCOPE WILL BE ISSUED AS PART OF PKG-5 - NORTH ENTRANCE.



STRUCTURAL:
 KPFF Consulting Engineers
 111 SW Fifth Avenue, Suite 2500
 Portland, OR 97204
 PH (503) 227-3251/FAX (503) 227-7980

CIVIL:
 KPFF Consulting Engineers
 111 SW Fifth Avenue, Suite 2500
 Portland, OR 97204
 PH (503) 542-3251/FAX (503) 274-4681

LANDSCAPE:
 Mayer / Reed
 319 SW Washington Street, Suite 820
 Portland, OR 97204
 PH (503) 223-5953/FAX (503) 223-8076

SIGNAGE & GRAPHIC:
 Mayer / Reed
 319 SW Washington Street, Suite 820
 Portland, OR 97204
 PH (503) 223-5953/FAX (503) 223-8076

MECHANICAL & PLUMBING:
 Systems West Engineers
 411 High Street
 Eugene, OR 97401
 PH (541) 342-7210/FAX (541) 342-7220

ELECTRICAL & LIGHTING:
 Startec
 733 SW Oak Street, Suite 200
 Portland, OR 97205
 PH (503) 273-0064

FIRE PROTECTION & CODE:
 EP&C Consultants, Inc.
 One Ward Parkway, Suite 200
 Kansas City, MO 64112
 PH (816) 931-3377/FAX (816) 931-3378

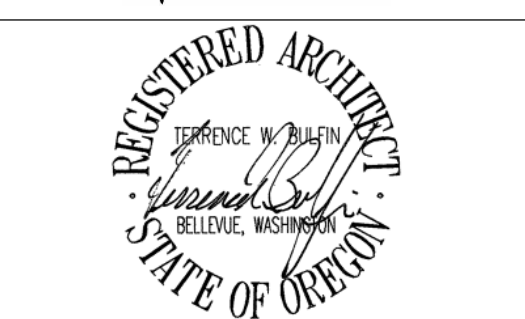
SOUND/AV TEL:
 Wulfrum
 3424 Midcourt Rd, Suite 124
 Carrollton, TX 75006
 PH (972) 934-3700/FAX (972) 934-3720

ELEVATOR CONSULTING:
 ECS
 15600 NE 8th Street, Suite B1, PMB 148
 Bellevue, WA 98008
 PH (425) 957-4641

REFERENCE KEYNOTE

| SPEC.# | DESCRIPTION |
|--------|-------------|
|--------|-------------|

VALLEY FOOTBALL CENTER/
 NORTH END ZONE RENOVATION
 OREGON STATE UNIVERSITY
 CORVALLIS, OREGON

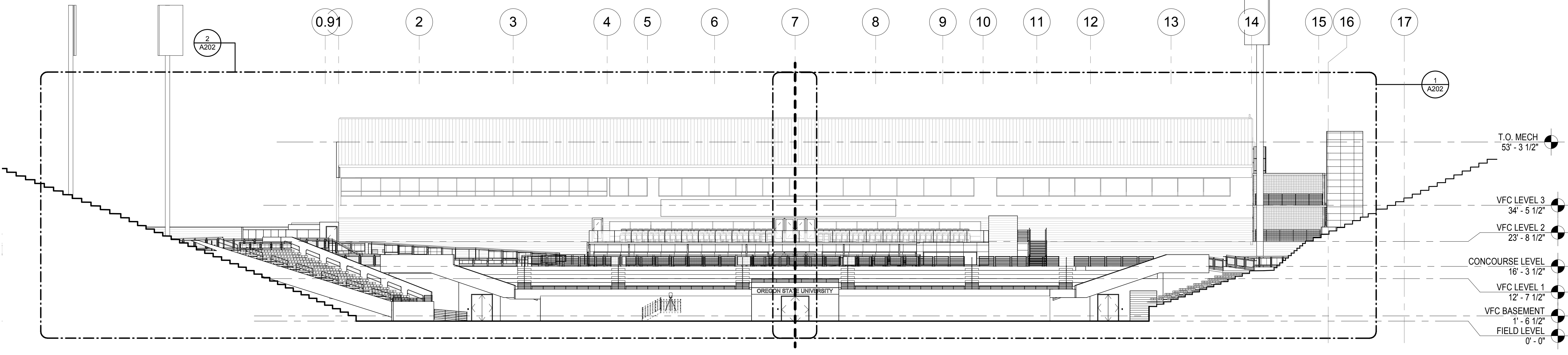


PKG-3 NORTH END ZONE & VFC RENOVATION

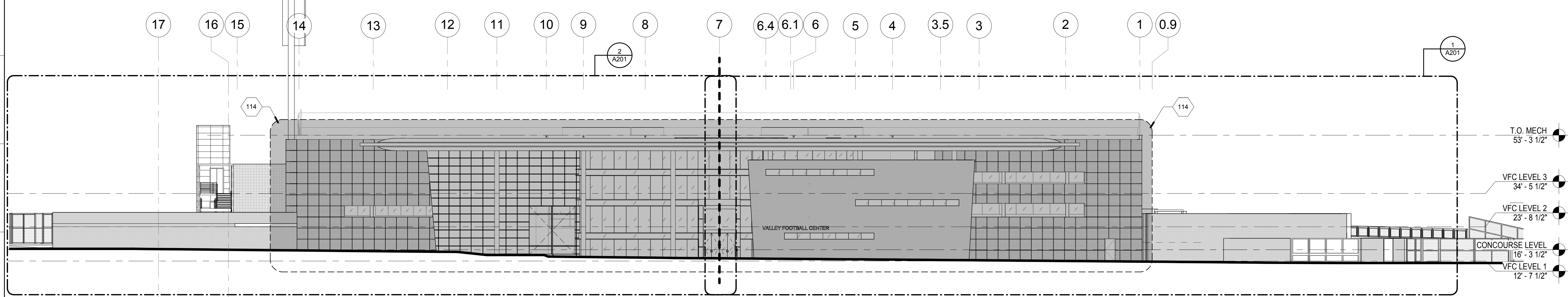
| | |
|-------------|---------------------------------------|
| DATE | 12.09.2015 |
| ISSUED FOR | PKG-3 NORTH END ZONE & VFC RENOVATION |
| PROJECT NO. | 60562 |
| DRAWN BY | ... |
| CHECKED BY | ... |
| APPROVED BY | ... |
| # | DATE DESCRIPTION |

SHEET TITLE & NUMBER
 OVERALL BUILDING ELEVATIONS - NORTH & SOUTH
A200

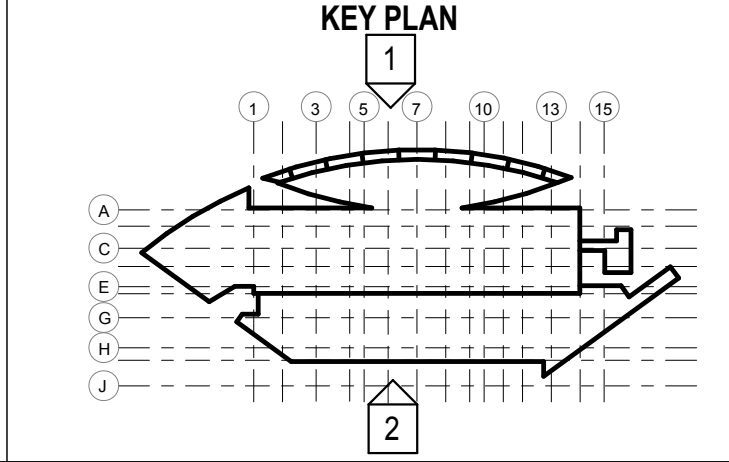
Copyright HNTB 2015



2 SOUTH ELEVATION
 1/16" = 1'-0"



1 NORTH ELEVATION
 1/16" = 1'-0"



12.09.2015 PKG-3 NORTH END ZONE & VFC RENOVATION

STRUCTURAL:
 KPFF Consulting Engineers
 111 SW Fifth Avenue, Suite 2500
 Portland, OR 97204
 PH (503) 227-3251/FAX (503) 227-7980

CIVIL:
 KPFF Consulting Engineers
 111 SW Fifth Avenue, Suite 2500
 Portland, OR 97204
 PH (503) 542-3251/FAX (503) 274-4681

LANDSCAPE:
 Mayer / Reed
 319 SW Washington Street, Suite 820
 Portland, OR 97204
 PH (503) 223-5953/FAX (503) 223-8076

SIGNAGE & GRAPHIC:
 Mayer / Reed
 319 SW Washington Street, Suite 820
 Portland, OR 97204
 PH (503) 223-5953/FAX (503) 223-8076

MECHANICAL & PLUMBING:
 Systems West Engineers
 411 High Street
 Eugene, OR 97401
 PH (541) 342-7210/FAX (541) 342-7220

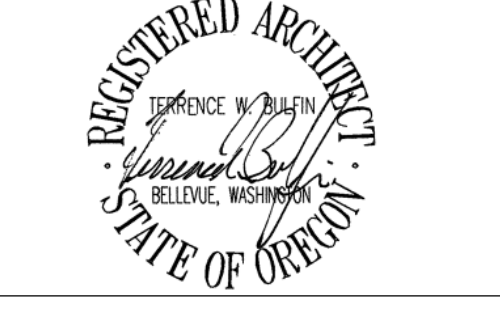
ELECTRICAL & LIGHTING:
 Startec
 733 SW Oak Street, Suite 200
 Portland, OR 97205
 PH (503) 273-0064

FIRE PROTECTION & CODE:
 EP&C Consultants, Inc.
 One Ward Parkway, Suite 200
 Kansas City, MO 64112
 PH (816) 931-3377/FAX (816) 931-3378

SOUND/AW TEL:
 Wulff
 3424 Midcourt Rd, Suite 124
 Carrollton, TX 75006
 PH (972) 934-3700/FAX (972) 934-3720

ELEVATOR CONSULTING:
 ECS
 15600 NE 8th Street, Suite B1, PMB 148
 Bellevue, WA 98008
 PH (425) 957-4641

**VALLEY FOOTBALL CENTER/
 NORTH END ZONE RENOVATION
 OREGON STATE UNIVERSITY**
 CORVALLIS, OREGON



PKG-3 NORTH END ZONE & VFC RENOVATION

| | | |
|-------------|---------------------------------------|-------------|
| DATE | 12.09.2015 | |
| ISSUED FOR | PKG-3 NORTH END ZONE & VFC RENOVATION | |
| PROJECT NO. | 65562 | |
| DRAWN BY | ... | |
| CHECKED BY | ... | |
| APPROVED BY | ... | |
| # | DATE | DESCRIPTION |

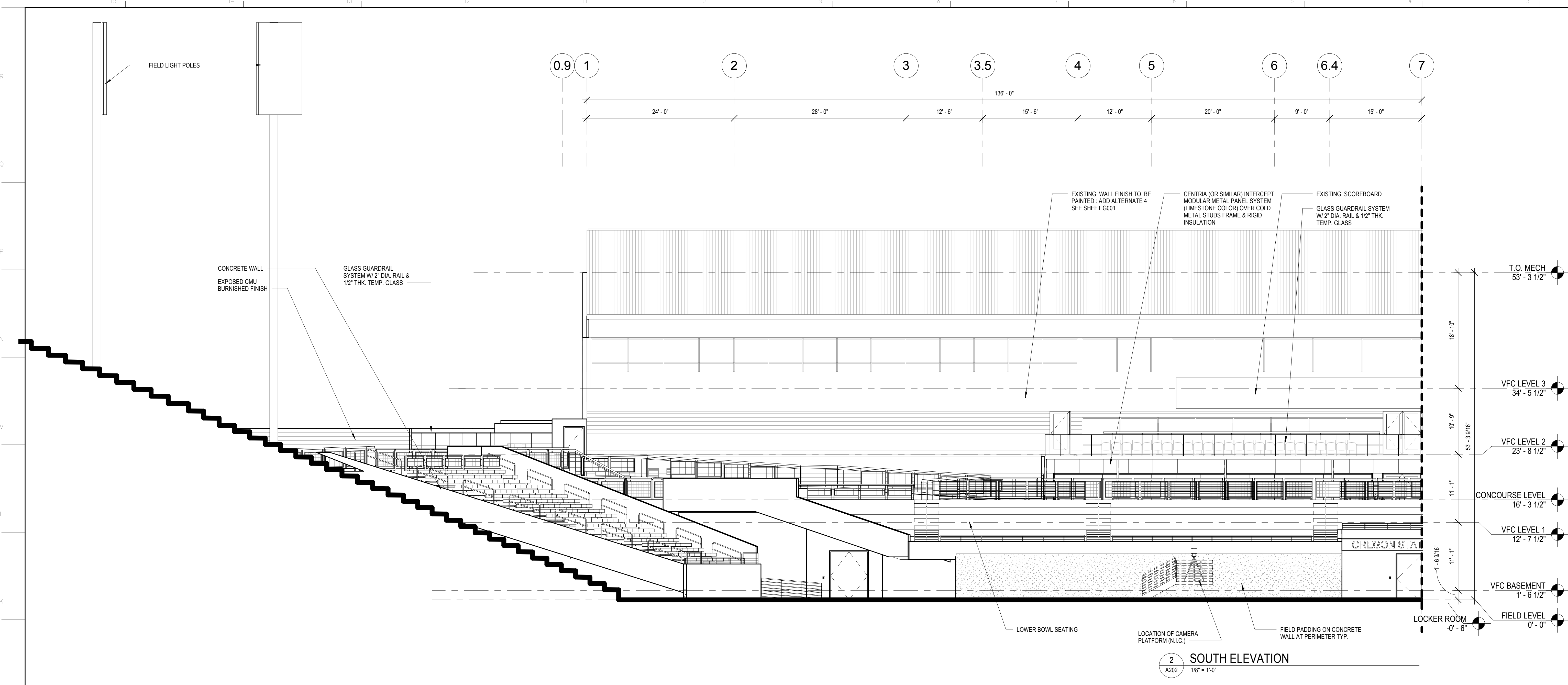
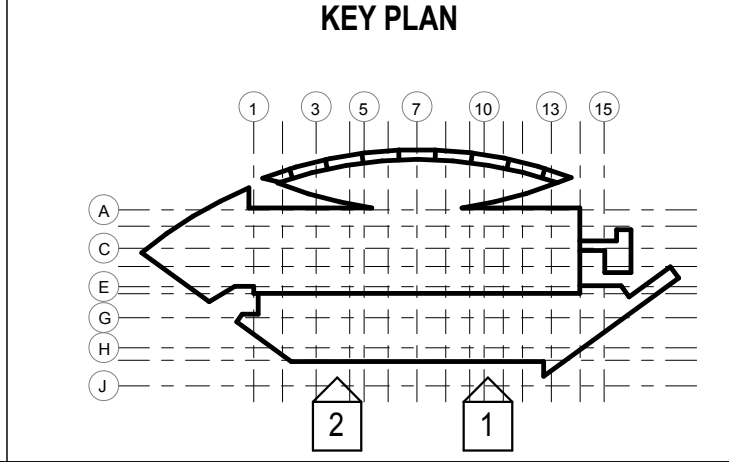
**SHEET TITLE & NUMBER
 ENLARGED
 ELEVATION -
 SOUTH
 A202**

SHEET NOTES

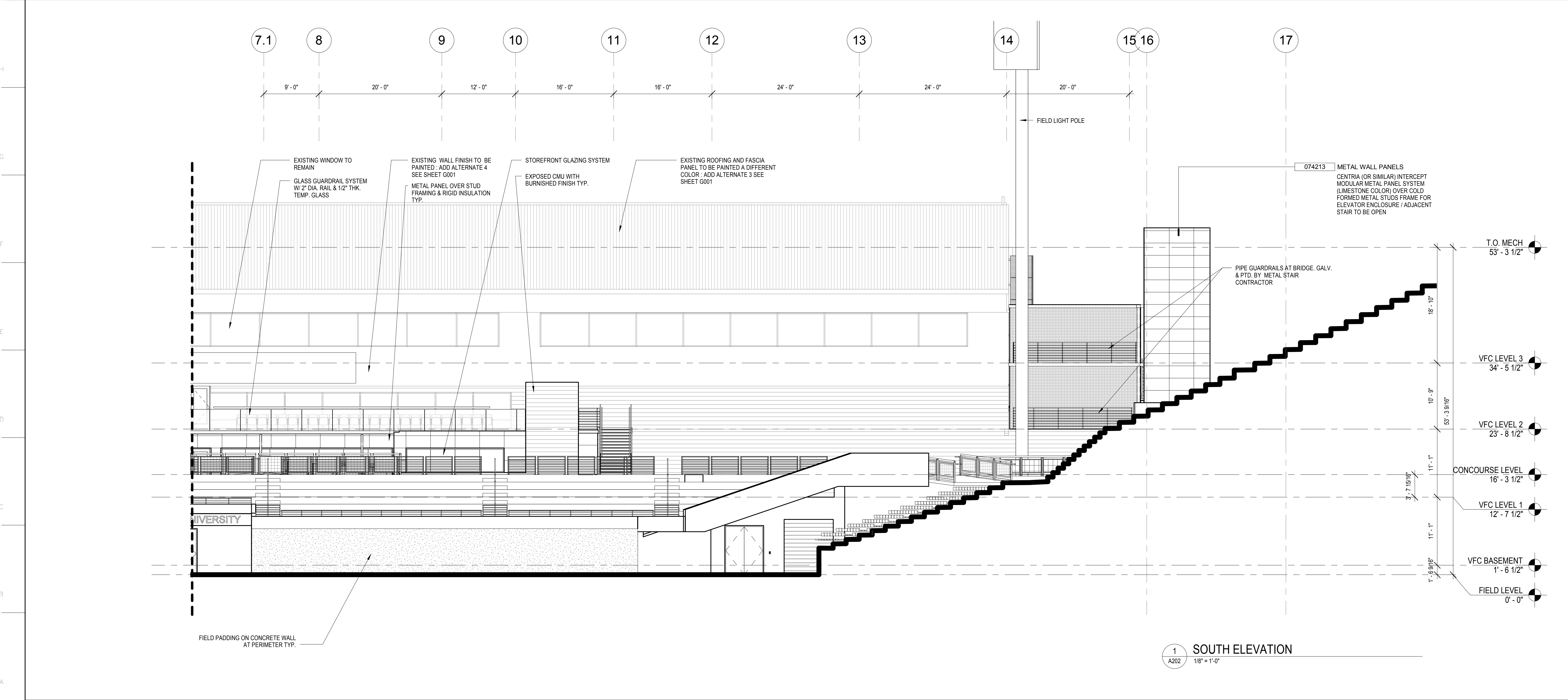
REFERENCE KEYNOTE

| SPEC.# | DESCRIPTION |
|--------|-------------------|
| 074213 | METAL WALL PANELS |

- WALL SECTIONS & DETAILS GENERAL NOTES:**
- REFER TO SHEET A... FOR CURTAIN / STOREFRONT TYPES SCHEDULE & GLASS TYPES SCHEDULE
 - THE BRICK MASONRY CONTRACTOR SHALL DESIGN, ENGINEER, FABRICATE, ASSEMBLE AND INSTALL ALL COMPONENTS OF THE BRICK MASONRY WALL, INCLUDING BUT NOT LIMITED TO THE FULL FACE BRICK TIES, LEDGER/RELIEF ANGLES AS SPECIFIED PER SECTION 01 62 11 - DELEGATED DESIGN REQUIREMENTS.
 - THE CONTRACTOR SHALL ENGINEER AND INSTALL METAL FRAMING AS SPECIFIED IN THE DELEGATED DESIGN REQUIREMENTS OF SPECIFICATIONS.
 - ALL EXTERIOR EXPOSED STRUCTURAL AND NON STRUCTURAL METAL FRAMING SHALL HAVE PAINT FINISH.



2 SOUTH ELEVATION
 1/8" = 1'-0"



1 SOUTH ELEVATION
 1/8" = 1'-0"