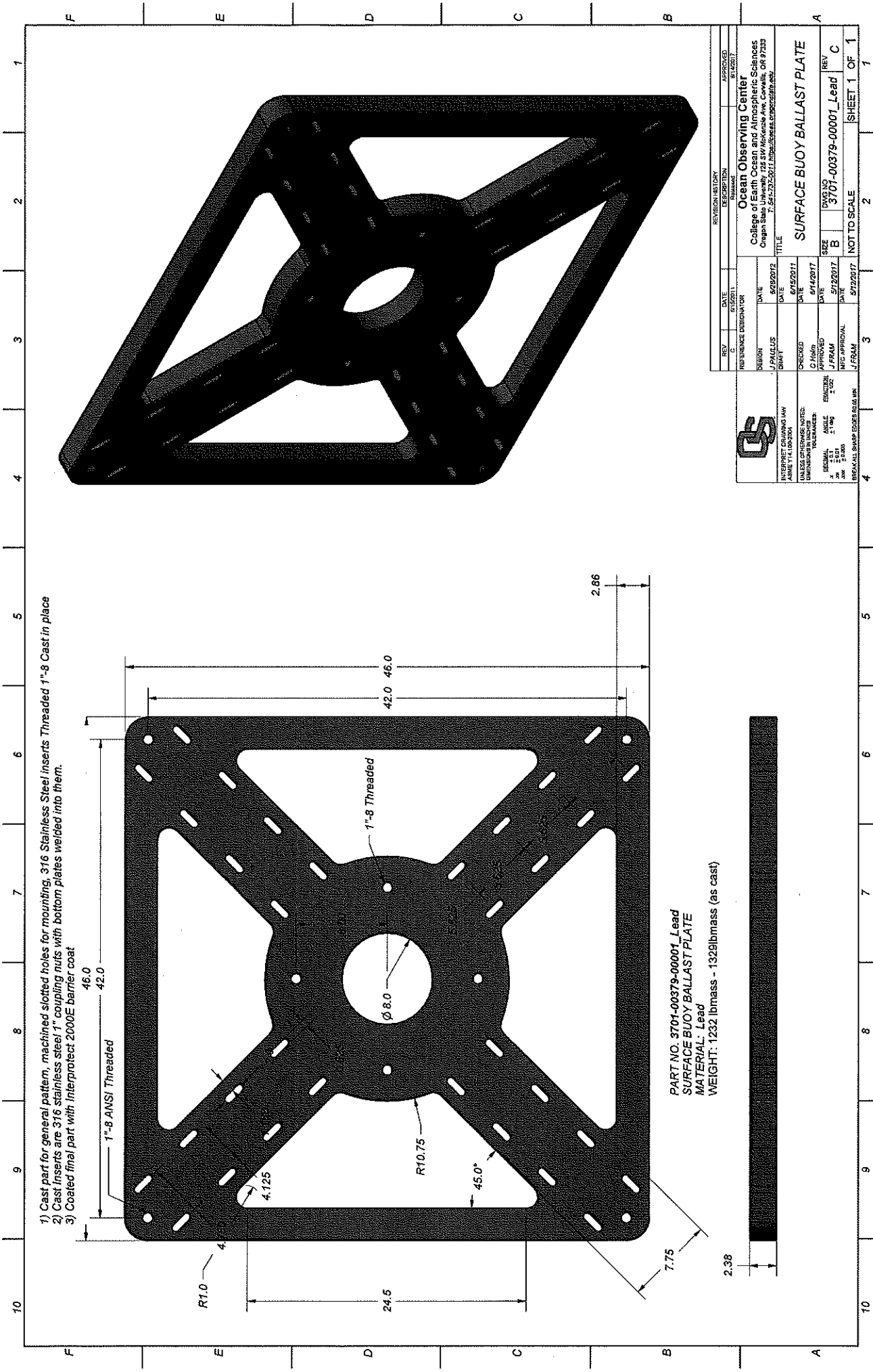




**OREGON STATE UNIVERSITY
REQUEST FOR QUOTE (RFQ)**

RFQ #		KB190490Q		ISSUE DATE:	8/23/17	
DELIVER TO:		REQUESTED BY / RETURN QUOTE TO:				
DEPARTMENT:	PCMM		NAME:	Karol Barker		
ADDRESS:	644 SW 13th Street		E-MAIL:	Karol.barker@oregonstate.edu		
CITY, STATE ZIP:	Corvallis, OR 97333		TELEPHONE:	541-737-7343		
REQUIRED DELIVERY DATE:	ASAP		FAX:	541-737-2170		
ITEM	DESCRIPTION	QTY	UNIT	UNIT PRICE	TOTAL PRICE	
1	Ballast Blocks, per CAD drawing attached	8	EA			
	Construction, molding, Machining, Finishing and Packing to manufacture					
	eight (8) Ballast Blocks per CAD drawing attached.					
Delivery is f.o.b. destination, prepaid and allowed. Shipping, freight and handling must be included in quoted prices. Additional costs for such are disallowed.				TOTAL		
DELIVERY TIME AFTER RECEIPT OF ORDER:			PRICES VALID THROUGH:			
SPECIAL INSTRUCTIONS:			VENDOR INFORMATION:			
<p>1. Unless otherwise specified, all items quoted are to be new, unused and not remanufactured in any way.</p> <p>2. Brand names are for the purpose of describing and establishing the characteristics desired and are not intended to limit or restrict competition. Quoters may submit quotes for substantially equivalent products unless the RFQ provides that a specific brand is necessary because of compatibility requirements, etc. All such brand substitutions shall be subject to approval by OSU.</p> <p>3. Quoters must clearly identify all products quoted. Brand name and model or number must be shown.</p> <p>4. Only documents issued as addenda by OSU serve to change the RFQ in any way.</p> <p>5. OSU reserves the right to make the award by item, partial or whole lots, groups of items or entire quote, whichever is in the best interest of OSU.</p> <p>6. OSU may reject any Quote not in compliance with the RFQ, attachments, and addenda, or if it is in the best interest of OSU.</p> <p>7. This RFQ form must be completed, signed and returned with all required documents.</p>			COMPANY:			
			ADDRESS:			
			CITY, STATE, ZIP:			
			CONTACT NAME:			
			E-MAIL:			
			TELEPHONE:			
			FAX:			
VENDOR SIGNATURE:						
By signature below the undersigned certifies that they are authorized to act on behalf of the quoter and will comply with all aspects of the quote herein.						
SIGNATURE:						
NAME/TITLE:						

This procurement is subject to the indicated Oregon State University Standard Terms and Conditions for: Goods Services Purchase Order Construction Software. The indicated terms and conditions may be viewed at <http://pacs.oregonstate.edu/terms-and-conditions>



- 1) Cast part for general pattern, machined slotted holes for mounting, 316 Stainless Steel Inserts Threaded 1"-8 Cast in place
- 2) Cast Inserts are 316 stainless steel 1" coupling nuts with bottom plates welded into them.
- 3) Coated final part with Interprotect 2000E barrier coat

PART NO. 3701-00379-00001_Lead
 SURFACE BUOY BALLAST PLATE
 MATERIAL: Lead
 WEIGHT: 1232 lbmass - 1329lbmass (as cast)

REV	DATE	BY	APP'D	REVISION HISTORY
	8/12/2011	J.PALLUS		DESIGN CHANGE
		J.PALLUS		FINAL

DESIGN	DATE	DATE	DATE
J.PALLUS	8/29/2012	6/15/2011	6/15/2011
DRAFT			

Ocean Observing Center		
College of Earth, Ocean and Atmospheric Sciences		
Oregon State University, 123 SW McKenzie Ave, Corvallis, OR 97331		
T: 541.737.3011 http://www.earthsci.orst.edu		

TITLE	SIZE	DWG NO	REV
SURFACE BUOY BALLAST PLATE	B	3701-00379-00001_Lead	C

DESIGNED BY	DATE	APPROVED BY	DATE
J.PALLUS	8/12/2011	J.PALLUS	8/12/2011
CHECKED BY	DATE	APPROVED BY	DATE
C.Palm	8/14/2017	J.PALLUS	8/14/2017
DESIGNED BY	DATE	APPROVED BY	DATE
J.PALLUS	8/12/2011	J.PALLUS	8/12/2011
CHECKED BY	DATE	APPROVED BY	DATE
J.PALLUS	8/12/2011	J.PALLUS	8/12/2011

INTERPRET DRAWING MAY	SCALE
AMIS 114.0020M	NOT TO SCALE

UNLESS OTHERWISE NOTED:	UNITS
LENGTH DIMENSIONS:	INCHES
ANGLES:	DEGREES
WEIGHTS:	POUNDS
TEMPERATURES:	DEGREES FAHRENHEIT
AREA:	SQ INCHES
VOLUME:	CUBIC INCHES
STRESS:	POUNDS PER SQUARE INCH

DESIGNED BY	DATE	APPROVED BY	DATE
J.PALLUS	8/12/2011	J.PALLUS	8/12/2011