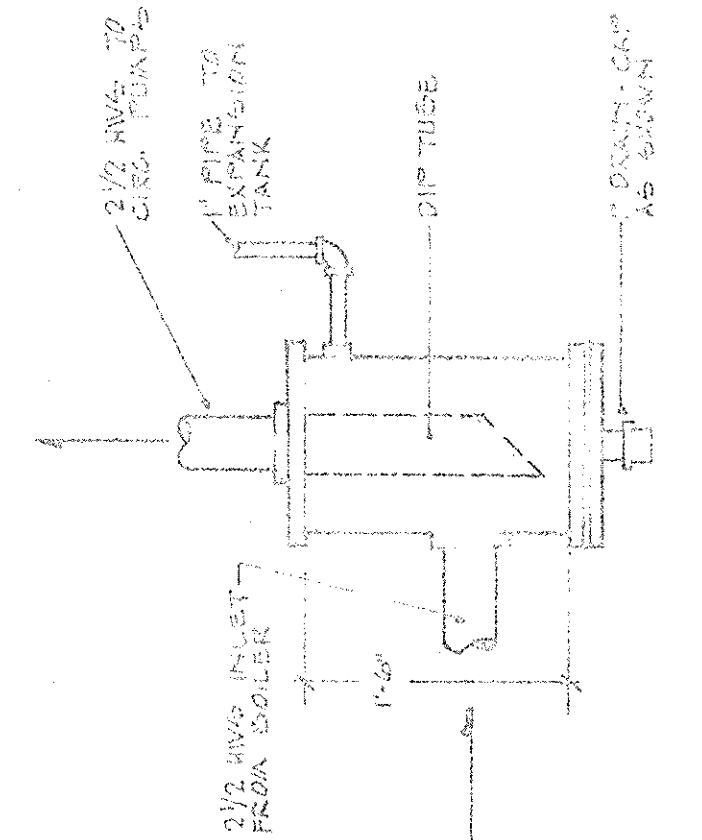
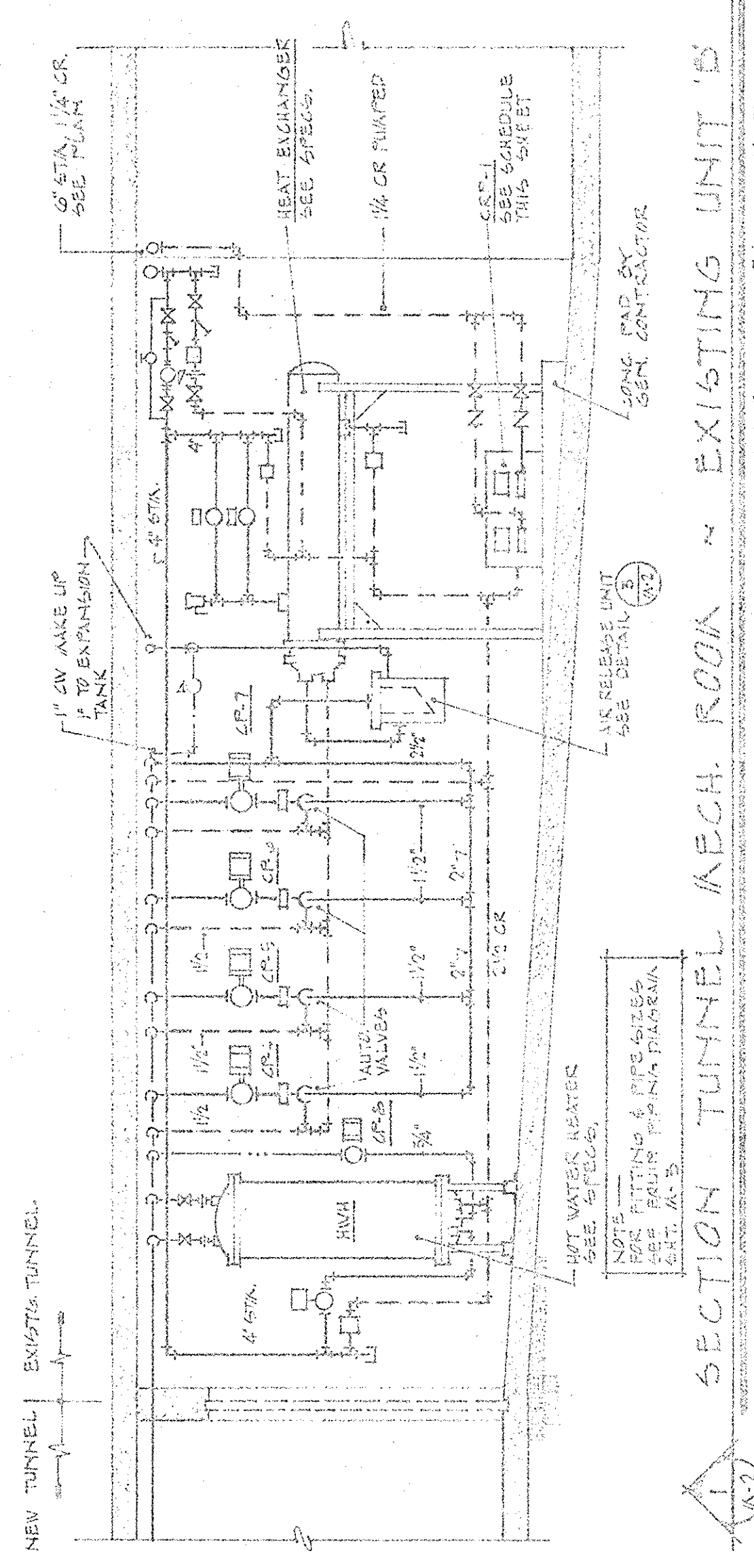


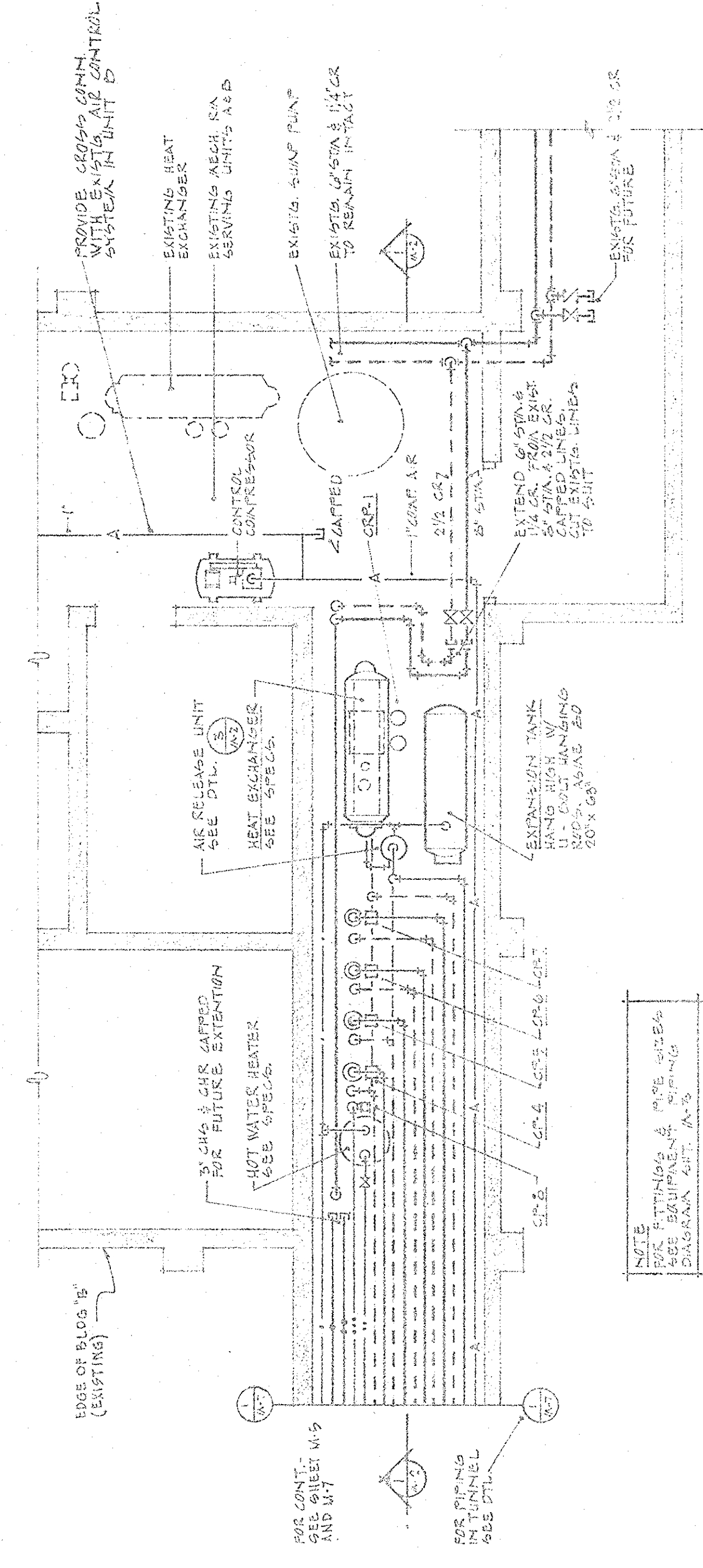
EXHAUST FAN SCHEDULE									
UNIT	LOCATION	REQ. NO.	TYPE	FAN MODEL	QFM	TOTAL P.T.	W.P.	CONTROL	REMARKS
EX-1	UNIT D	1500	PC	1500	1/2	1500	1/2	WITH HAV-1	MECHANICAL ROOM
EX-2	UNIT C	2400	PC	1150	1/2	2400	1/2	WITH HAV-2	MECHANICAL ROOM
EX-3	UNIT B	1000	PC	1000	1/2	1000	1/2	WITH LIGHT SK.	SAME ROOM AS FAN
EX-4	UNIT A	1000	PC	1000	1/2	1000	1/2	WITH HAV-3	MECHANICAL ROOM

PUMP SCHEDULE									
UNIT	LOCATION	REQ. NO.	TYPE	FAN MODEL	QFM	TOTAL P.T.	W.P.	CONTROL	REMARKS
CP-1	UNIT D	1500	PC	1500	1/2	1500	1/2	WITH HAV-1	MECHANICAL ROOM
CP-2	UNIT C	2400	PC	1150	1/2	2400	1/2	WITH HAV-2	MECHANICAL ROOM
CP-3	UNIT B	1000	PC	1000	1/2	1000	1/2	WITH LIGHT SK.	SAME ROOM AS FAN
CP-4	UNIT A	1000	PC	1000	1/2	1000	1/2	WITH HAV-3	MECHANICAL ROOM



P L U M B I N G F I X T U R E S C H E D U L E									
CODE	FIXTURE	QTY	CONNECTIONS	MANUFACTURER	W.P.	OR	W.P.	W.P.	REMARKS
P-1	WATER CLOSET	6	4/2	1	AMERICAN STANDARD	APFALL P-2471	SLANG ROYAL 1/2 PYRO FLUSH VALVE		ON-SITE WHITE STAY NO. 1000 CLASSIC CARRIERS RUD.P.
P-2	LAVATORY	15	1 1/2	1 1/2	AMERICAN STANDARD	ESCALIN P-7001	NOES 624-P SUPPLY VALVE & WASTE		R-7000 TRAP, 20x1/2 CONVENT SINK, HUBBER RIN
P-3	LAVATORY	15	1 1/2	1 1/2	AMERICAN STANDARD	ESCALIN P-4869	NOEN 624-P SUPPLY VALVE & WASTE		R-7000 TRAP, 20x1/2 CI 1/2 WALL HANGERS
P-4	SERVICE SINK	2	2	1 1/2	AMERICAN STANDARD	ANGO P-7705	R-5075 VS, P-7798(2") R-217 RIN GUARD		23x20 1/2
P-5	UTILITY SINK	2	2	1 1/2	AMERICAN STANDARD	SUNSET SSR 2470 R	NOEN 7300 SUPPLY R-410 STRAINER		R-7000 TRAP, 21x20 1/2, 3 HOLE PUNCH
P-6	SHOWER	-	-	1 1/2	SYNOPSIS	1-6011 PROPER	WIDPE 2-1/2 HEAD TO FIT SHOWER DUMP		MOUNTING HEIGHT 5'-8"
P-7	DRINKING FOUNTAIN	15	1 1/2	1 1/2	AMERICAN STANDARD	TIGRA P-4313	R-5011 SUPPLY HUBB-1-55 WALLPITCH		SINK REGGERS; 36" NYC HEIGHT.
P-8	BATH TUB	15	1 1/2	1 1/2	AMERICAN STANDARD	P-1153 CONTOUR	SPONGES SIX 16-2 SHOWER, TUB FINITERS		60x20 SIZE
P-9	URINAL	3	2	1/4	AMERICAN STANDARD	WASHBODK P-6500	SLANG ROYAL 18x-11 FLUSH VALVE		1/2 WALL HANGER
PD-1	FLOOR DRAIN	2	-	-	JOHAN	0412	NIMLAY TOP 1/2 FLASHING CLAMP DEVICE		TRAP INSTALLED IN PLUMB, SEE PLANS
PD-2	FLOOR DRAIN	3	-	-	JOHAN	7723	FLASHING CLAMP POLISHED BRASS TOP		INSTALLED IN TOILET ROOMS
PD-3	FLOOR DRAIN	3	-	-	JOHAN	302-4TH 372	NIMLAY TOP 1/2 FLASHING CLAMP		INSTALLED IN MECHANICAL ROOM & OBS. ARCADE
PD-4	FLOOR DRAIN	2	-	-	JOHAN	300-748	NIMLAY STRAINER R-4-3/8 FISH CLAMP		INSTALLED IN TUBS ROOMS
PD-5	FLOOR DRAIN	2	-	-	JOHAN	302-538F	NIMLAY STRAINER 1/2 FLASHING CLAMP		INSTALLED IN SHOWER ROOMS.
PD-6	FLOOR DRAIN	1	-	-	JOHAN	402-138F F74	1" NICKLOP STRAINER		VANDAL PROOF SCREWS
PD-7	ROOF DRAIN	3	-	-	JOHAN	400-9-D	CAST IRON WITH DECK FLASHING CLAMP		FUNNEL CONVERSION ASSEMBLY
PD-2	ROOF DRAIN	6	-	-	JOHAN	466A-D	CAST IRON WITH DECK FLASHING CLAMP		
PD-3	ROOF DRAIN	2	-	-	JOHAN	7782-C	CAST IRON WITH DECK CLAMP		
PD-4	ROOF DRAIN	3	-	-	JOHAN	7783-C	CAST IRON WITH DECK CLAMP		
SH	WALL FOUNTAIN	-	-	-	JOHAN	1402X-8	POLISHED BRONZE FACE		
SH	CATCH BASIN	4	-	-	LYNCH CO. INC.	26x26x36 BIGH	1" PLATE, ASPHALT COATED INSIDE AND OUT		SEE PLOT PLAN, SHEET 1-1
SH	ROSE BISH	-	-	-	CHICAGO	293 LA			LARGE RIN AND LOCK SHIELD CAP

NOTE: MANUFACTURER TRADE NAMES, CAPACITIES, TYPES, SIZES, QUALITY AND APPEARANCE OF UNIT TO BE INSTALLED. PROPOSED SUBSTITUTIONS MAY BE SUBMITTED TO ARCHITECT WITH SPECIAL CONDITIONS.



SECTION TUNNEL MECH. ROOM ~ EXISTING UNIT 'B'

HEATING VENTILATING EQUIPMENT SCHEDULE									
UNIT	LOCATION	REQ. NO.	TYPE	FAN MODEL	QFM	TOTAL P.T.	W.P.	CONTROL	REMARKS
HV-1	UNIT D	1500	PC	1500	1/2	1500	1/2	WITH HAV-1	MECHANICAL ROOM
HV-2	UNIT C	2400	PC	1150	1/2	2400	1/2	WITH HAV-2	MECHANICAL ROOM
HV-3	UNIT B	1000	PC	1000	1/2	1000	1/2	WITH LIGHT SK.	SAME ROOM AS FAN
HV-4	UNIT A	1000	PC	1000	1/2	1000	1/2	WITH HAV-3	MECHANICAL ROOM

