

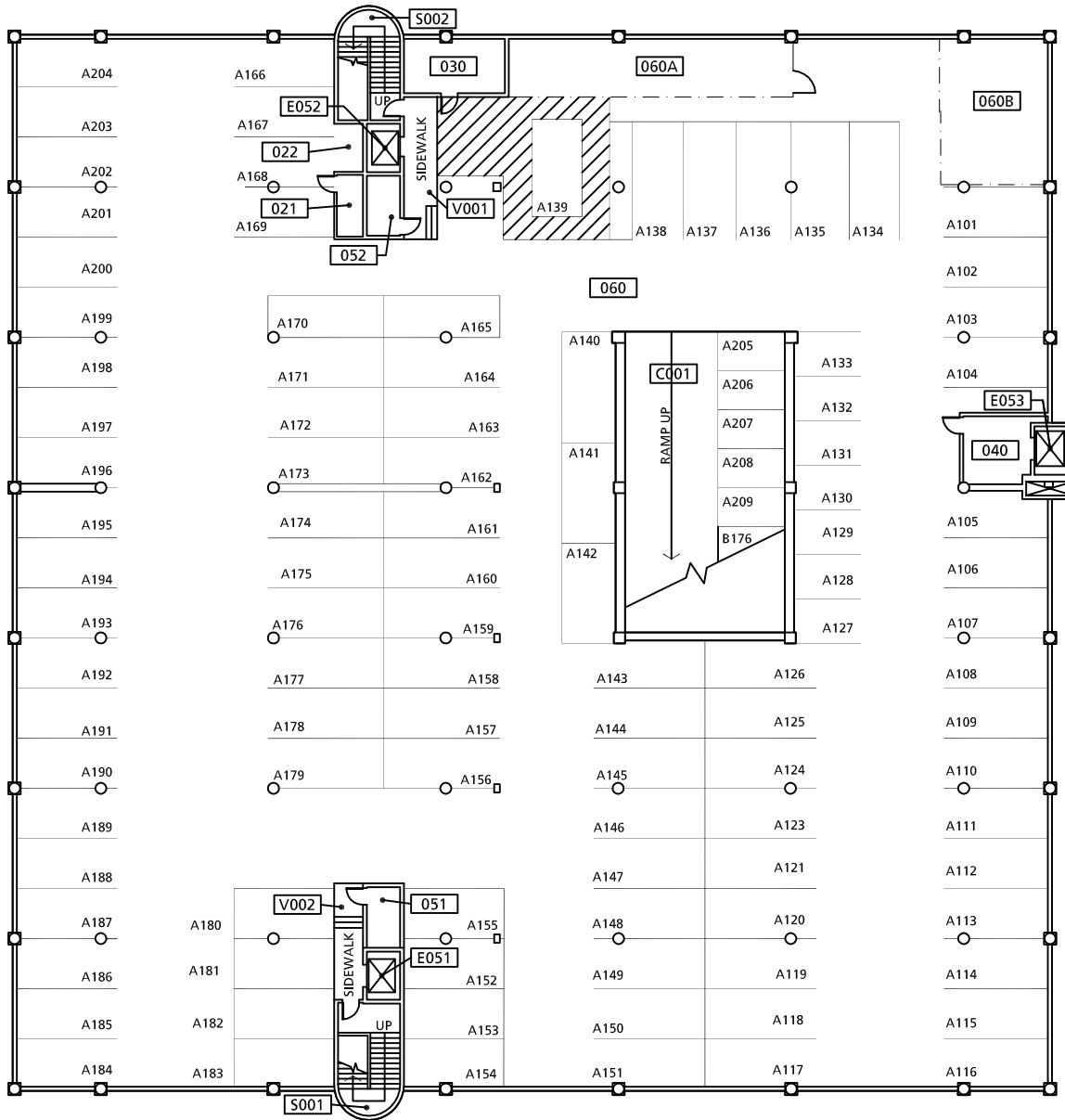
# 160 - A1

DRAWN BY:  
LRR  
DATE:  
4/2012

## BASEMENT PLAN 160, UNIVERSITY CENTER BUILDING 527 S.W. HALL

FACILITIES  
617 SOUTHWEST  
MONTGOMERY STREET  
PORTLAND, OR. 97201  
www.fac.pdx.edu  
TEL: 503-725-3738  
FAX: 503-725-4329

# PORTLAND STATE UNIVERSITY



BASEMENT PLAN



160 - A2

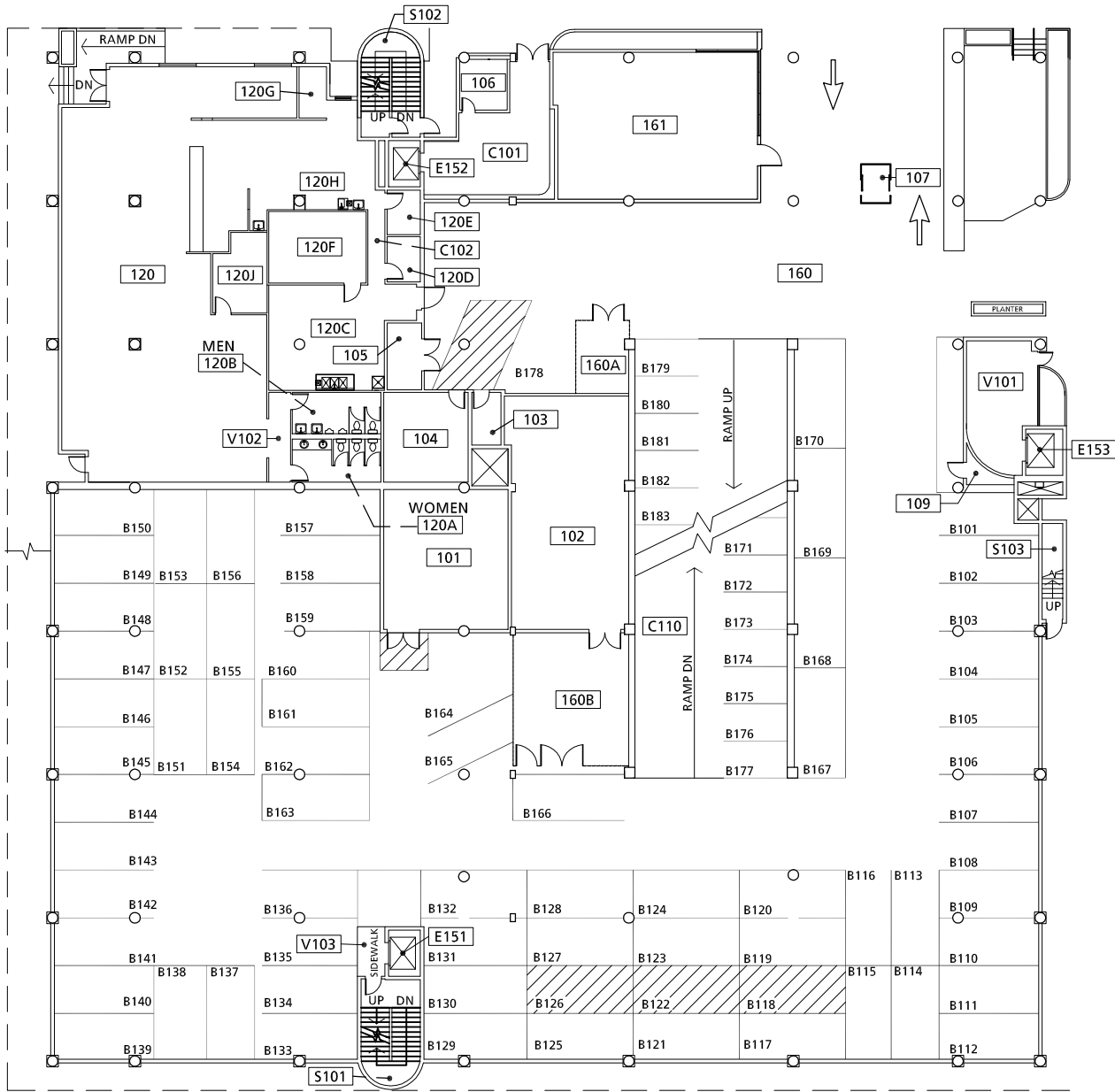
DRAWN BY:  
LRR

DATE:  
4/2011

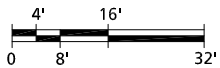
FIRST FLOOR PLAN  
160, UNIVERSITY CENTER BUILDING  
527 S.W. HALL

FACILITIES  
617 SOUTHWEST  
MONTGOMERY STREET  
PORTLAND, OR. 97201  
www.fac.pdx.edu  
TEL: 503-725-3738  
FAX: 503-725-4329

PORTLAND  
STATE  
UNIVERSITY



FIRST FLOOR PLAN



160 - A4

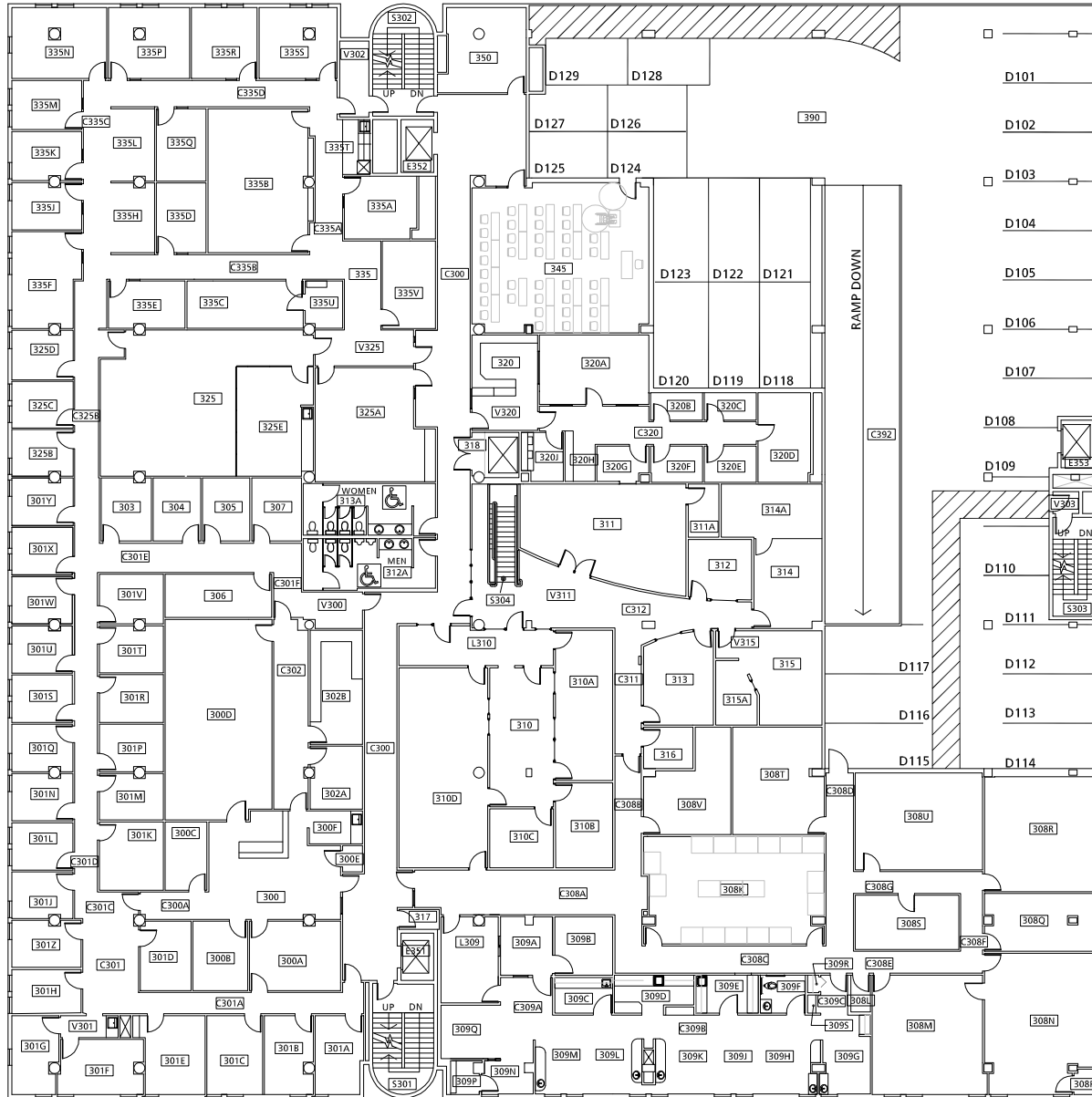
DRAWN BY:  
LRR

DATE:  
8/2012

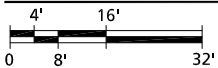
THIRD FLOOR PLAN  
160, UNIVERSITY CENTER BUILDING  
527 S.W. HALL

FACILITIES  
617 SOUTHWEST  
MONTGOMERY STREET  
PORTLAND, OR. 97201  
www.fac.pdx.edu  
TEL: 503-725-3738  
FAX: 503-725-4329

PORTLAND  
STATE  
UNIVERSITY



THIRD FLOOR PLAN



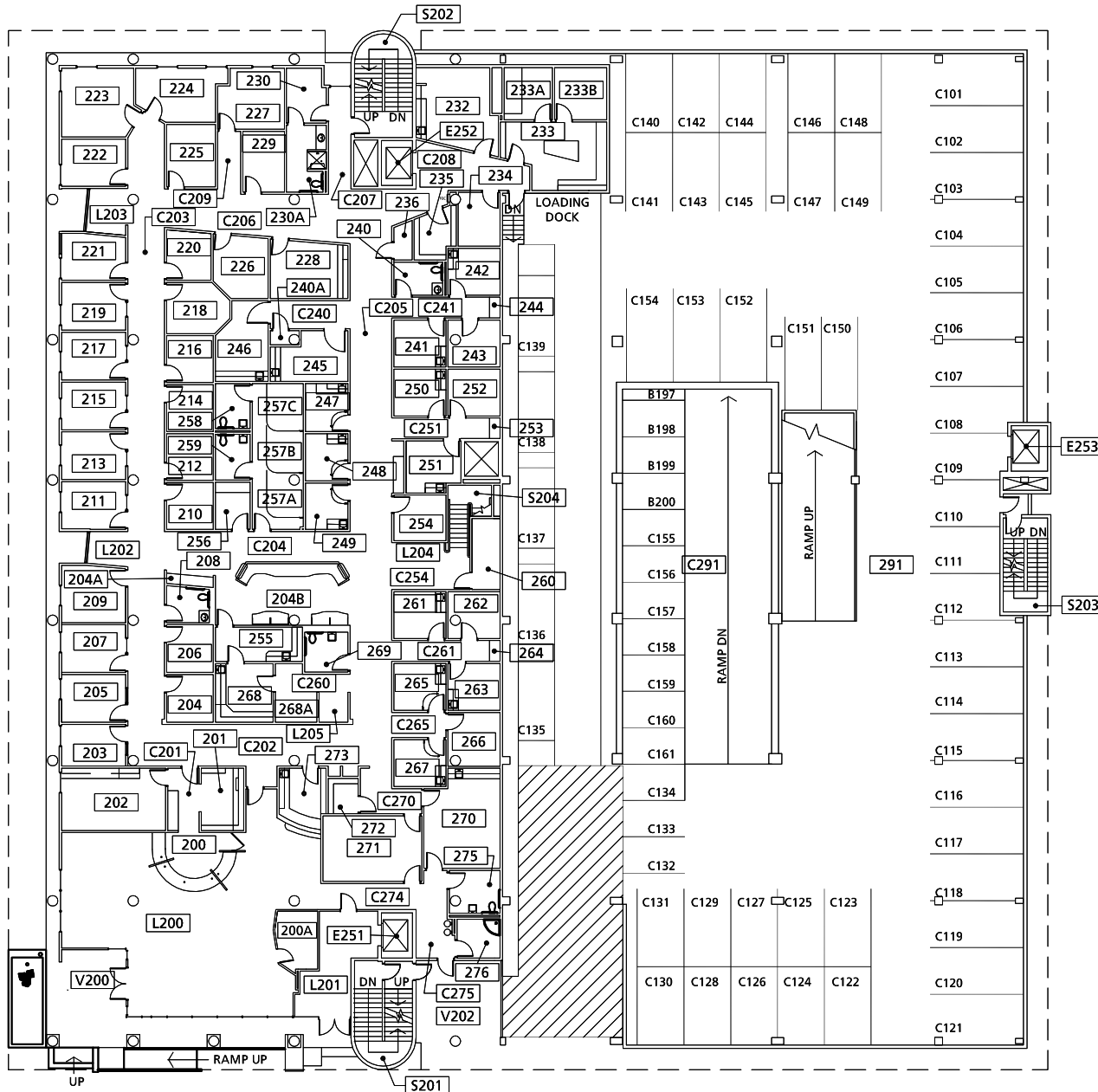
160 - A3

DRAWN BY:  
LRR  
DATE:  
2011

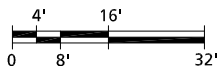
SECOND FLOOR PLAN  
160, UNIVERSITY CENTER BUILDING  
527 S.W. HALL

FACILITIES  
617 SOUTHWEST  
MONTGOMERY STREET  
PORTLAND, OR. 97201  
www.fac.pdx.edu  
TEL: 503-725-3738  
FAX: 503-725-4329

PORTLAND  
STATE  
UNIVERSITY



SECOND FLOOR PLAN



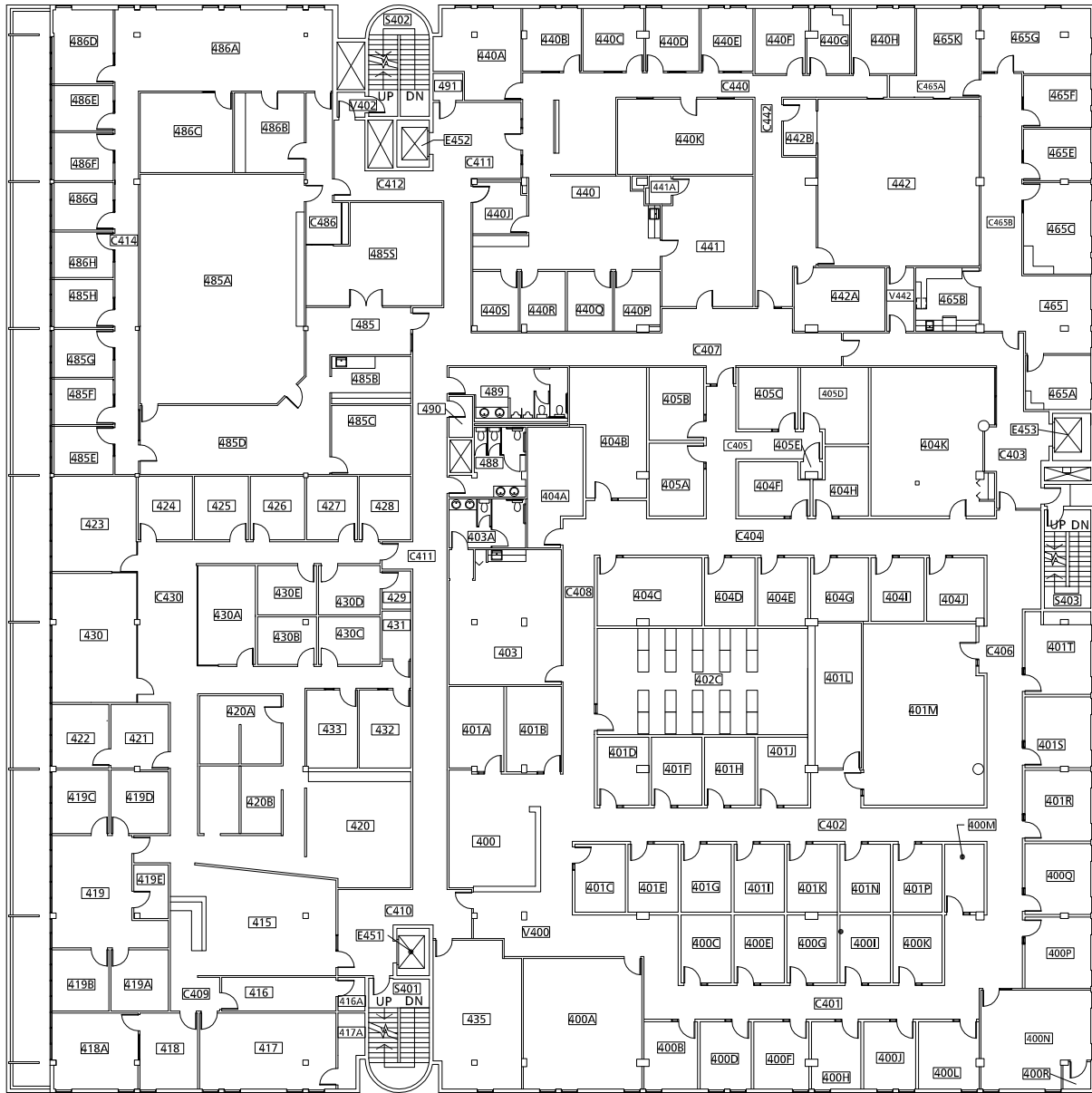
160 - A5

DRAWN BY:  
LRR  
DATE:  
2012

FOURTH FLOOR PLAN  
160, UNIVERSITY CENTER BUILDING  
527 S.W. HALL

FACILITIES  
617 SOUTHWEST  
MONTGOMERY STREET  
PORTLAND, OR. 97201  
www.fac.pdx.edu  
TEL: 503-725-3738  
FAX: 503-725-4329

PORTLAND  
STATE  
UNIVERSITY



FOURTH FLOOR PLAN



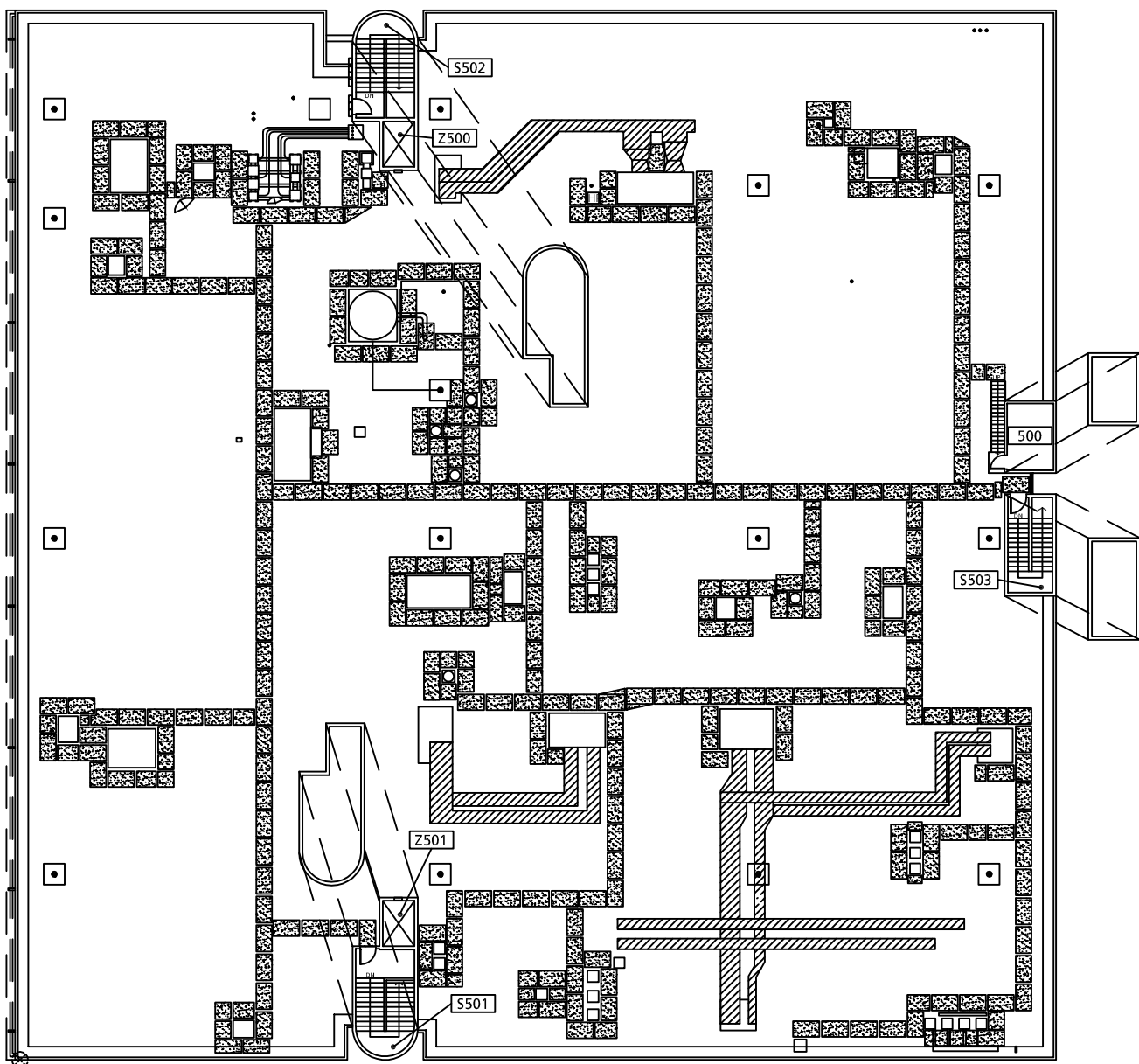
160 - A6

DRAWN BY:  
LRR  
DATE:  
9/25/2003

ROOF PLAN  
160, UNIVERSITY CENTER BUILDING  
527 S.W. HALL

FACILITIES  
617 SOUTHWEST  
MONTGOMERY STREET  
PORTLAND, OR. 97201  
www.fac.pdx.edu  
TEL: 503-725-3738  
FAX: 503-725-4329

PORTLAND  
STATE  
UNIVERSITY



ROOF PLAN

