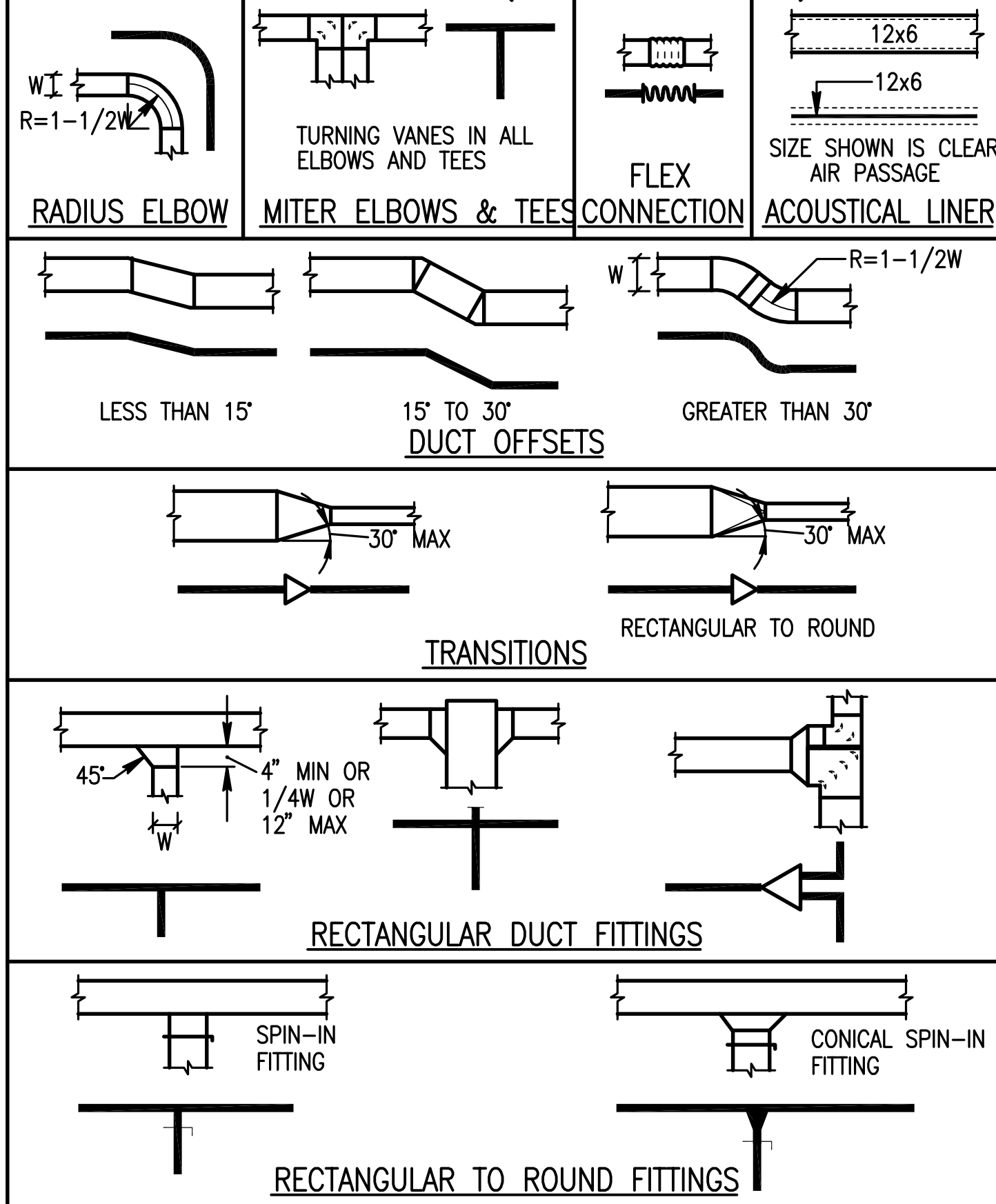


STANDARD MECHANICAL ABBREVIATIONS

AFF	ABOVE FINISHED FLOOR
ALT	ALTERNATIVE
APPROX	APPROXIMATELY
ARCH	ARCHITECT(URAL)
BTU	BRITISH THERMAL UNIT
BTUH	BRITISH THERMAL UNITS PER HOUR
CONN	CONNECT(ION)
CONT	CONTINUE(ED)(UATION)
CL	CENTERLINE
DN	DOWN
DWG	DRAWING
EA	EXHAUST AIR
EAT	ENTERING AIR TEMPERATURE
EDB	ENTERING DRY BULB
EFF	EFFICIENCY
ENGR	ENGINEER
EQ	EQUAL
EQUIP	EQUIPMENT
ESP	EXTERNAL STATIC PRESSURE
EWB	ENTERING WET BULB
EXH	EXHAUST
EXIST	EXISTING
F	DEGREES FAHRENHEIT
FILT	FILTER
FLEX	FLEXIBLE
FT	FEET/FOOT
GAL	GALLON
H	HEIGHT
HORIZ	HORIZONTAL
HP	HORSEPOWER
HTG	HEATING
IE	INVERT ELEVATION
IN	INCH(ES)
INSUL	INSULATION
L	LENGTH
LAT	LEAVING AIR TEMP
LB	POUND
LDB	LEAVING DRY BULB
LF	LINEAR FEET
LVG	LEAVING WET BULB
LWB	LEAVING WET BULB
MAX	MAXIMUM
MBH	THOUSAND BTU PER HOUR
MECH	MECHANICAL
MFR	MANUFACTURER
MIN	MINIMUM
MISC	MISCELLANEOUS
MTD	MOUNTED
TEMP	TEMPERATURE
TSP	TOTAL STATIC PRESSURE
TYP	TYPICAL
VD	VOLUME DAMPER
VERT	VERTICAL
VTR	VENT THROUGH ROOF
W	WIDTH
OSA	OUTSIDE AIR
PSI	POUNDS PER SQUARE INCH
R (RAD)	RADIUS
RA	RETURN AIR
RAD	RETURN AIR DAMPER
REV	REVISION
RH	RELATIVE HUMIDITY
RR	REFRIGERANT RETURN
RS	REFRIGERANT SUPPLY
SA	SUPPLY AIR
SP	STATIC PRESSURE
SPEC	SPECIFICATION
SF	SQUARE FOOT(FEET)
SQ IN	SQUARE INCH(ES)

DUCT DETAILS (LOW VELOCITY)



SYMBOLS

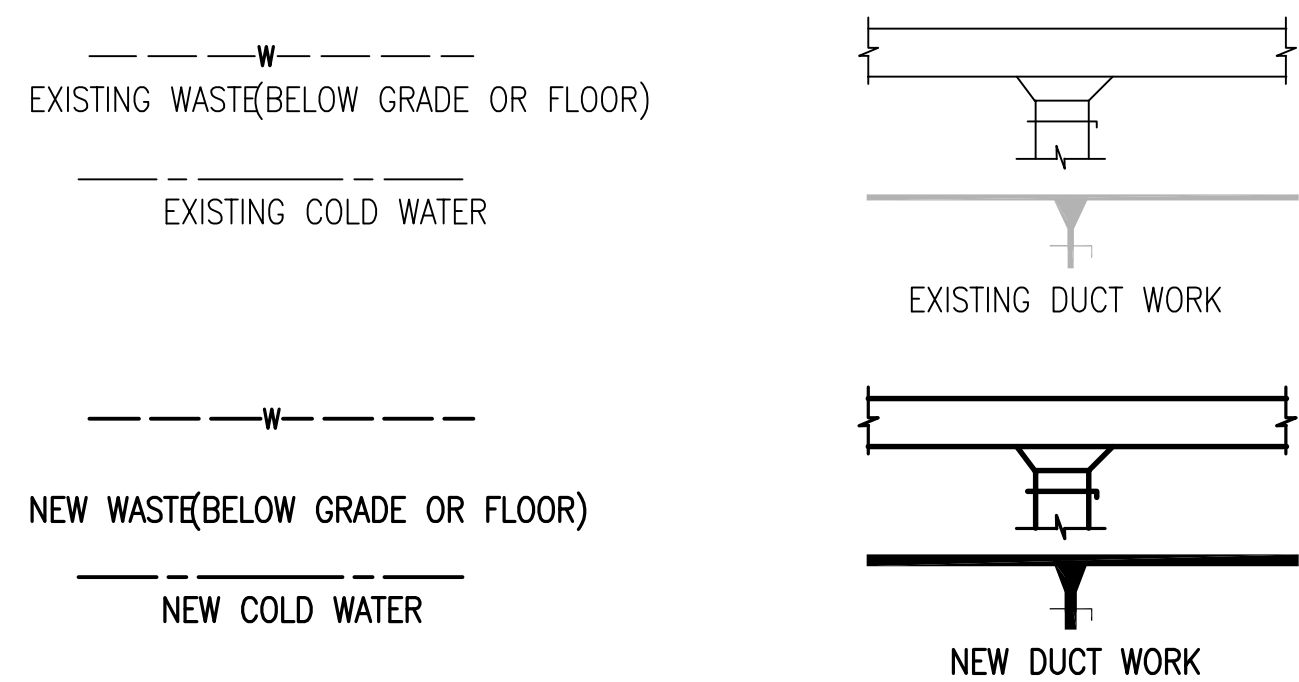
(A)	ACCESS PANEL	(K)	CAP EXISTING / CAP FOR FUTURE
(B)	BELOW GRADE / FLOOR	(R)	RELOCATE EXISTING
(C)	CONNECT TO EXISTING	(X)	REMOVE EXISTING
(E)	EXISTING TO REMAIN	(1)	NOTE

CALL OUT SYMBOLS

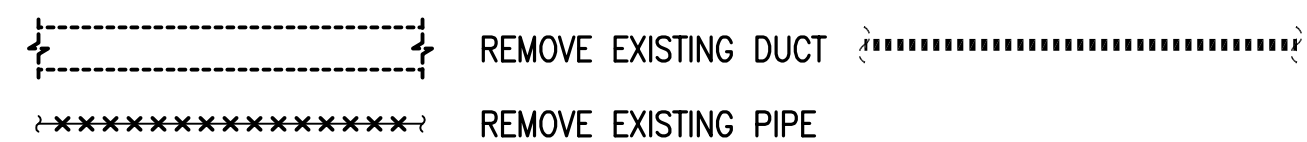
(W)	WALL MOUNTED	(CO)	CARBON MONOXIDE
(P)	PENDANT MOUNTED	(CO2)	CARBON DIOXIDE
(T)	TEMPERATURE	(NOX)	NITROGEN OXIDE
(H)	HUMIDITY		

ROOM SENSORS

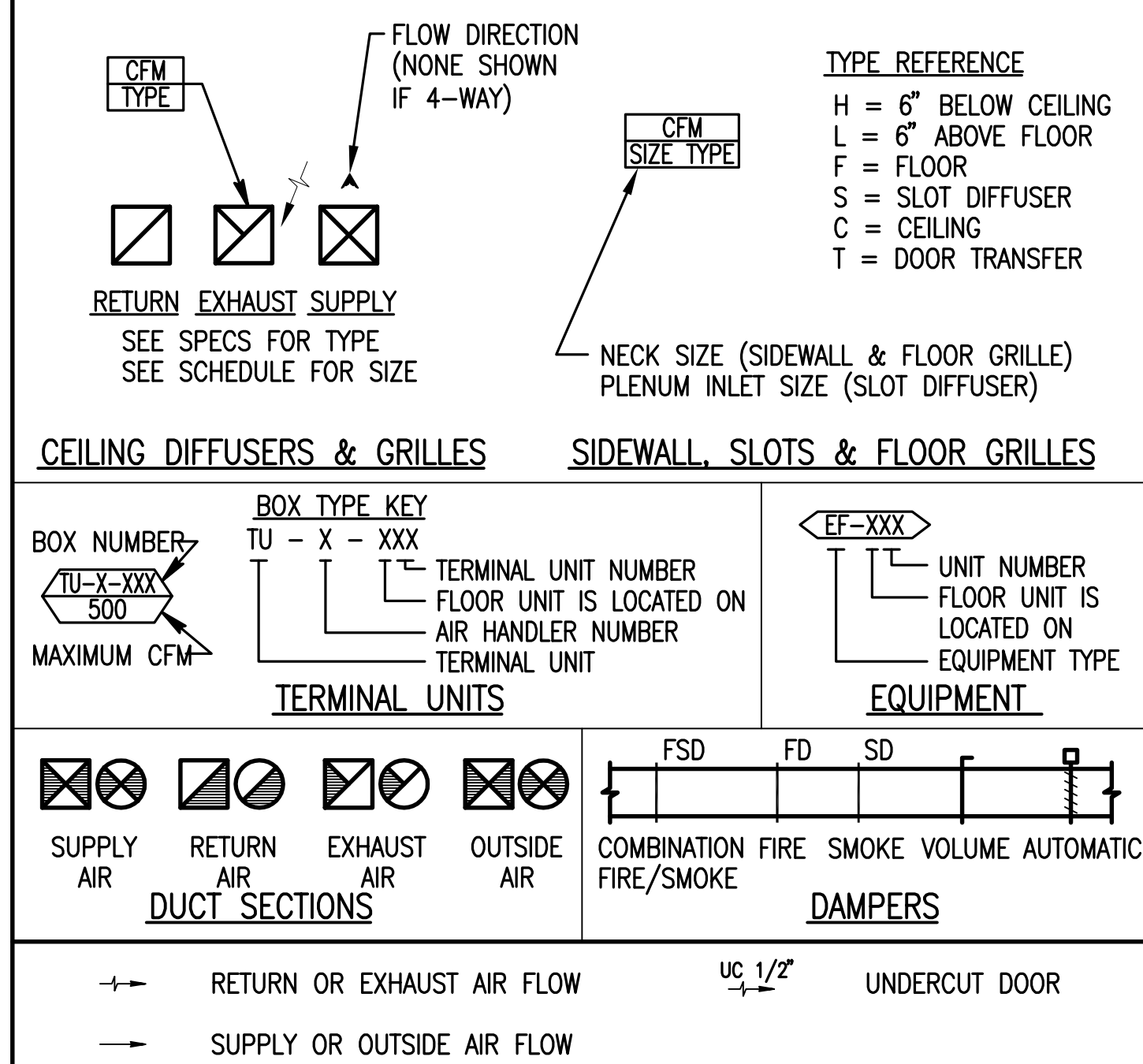
NEW AND EXISTING WORK



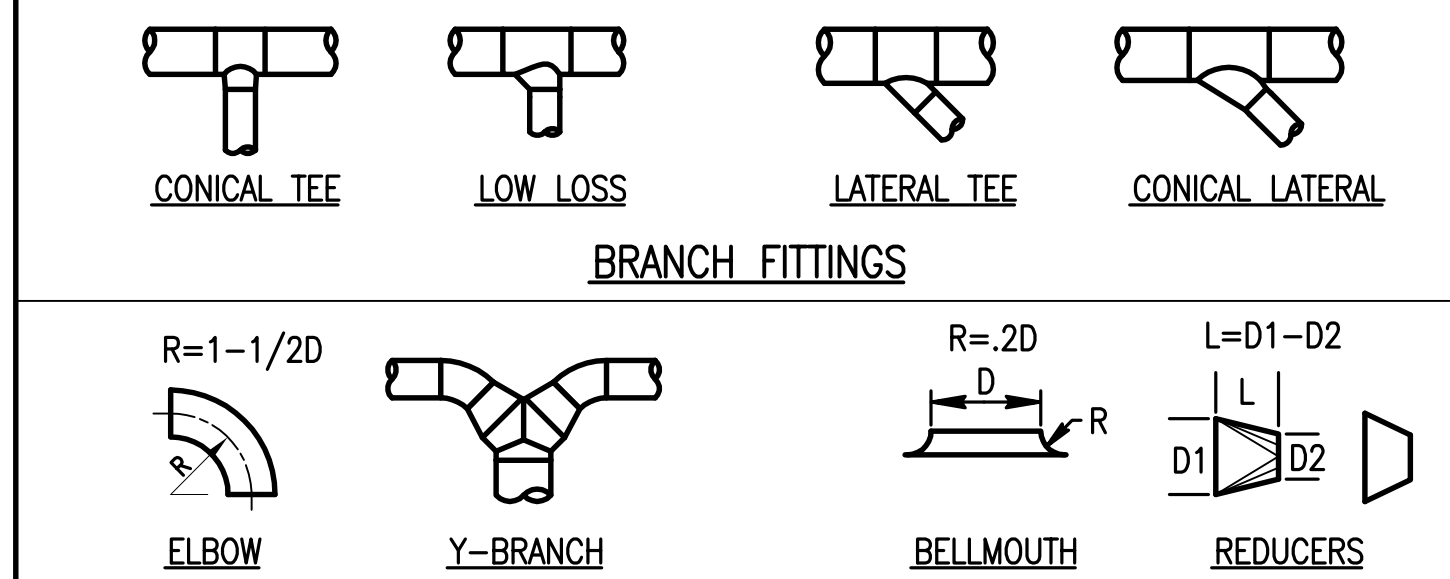
DEMOLITION LEGEND



DUCT LEGEND



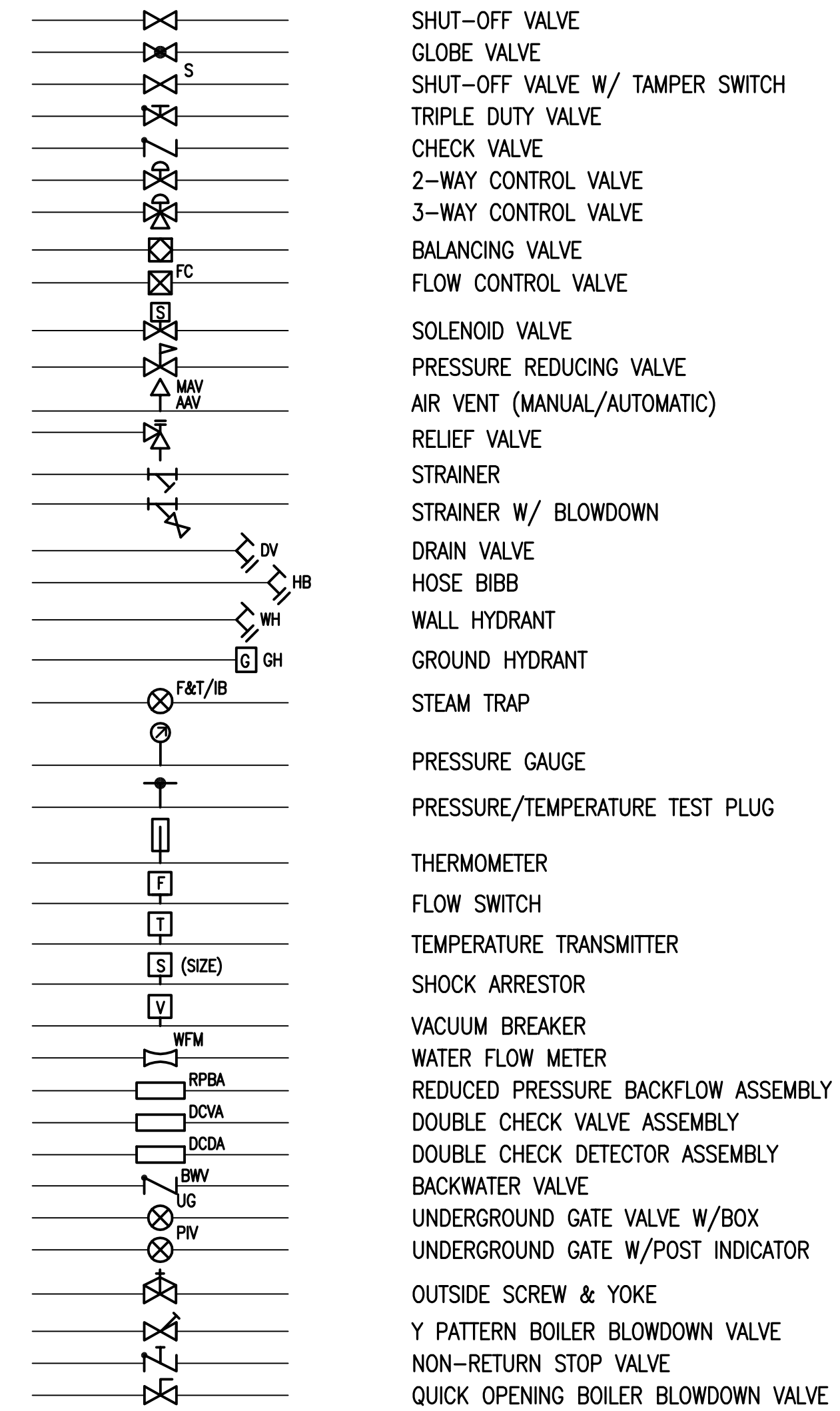
MEDIUM PRESSURE DUCTWORK



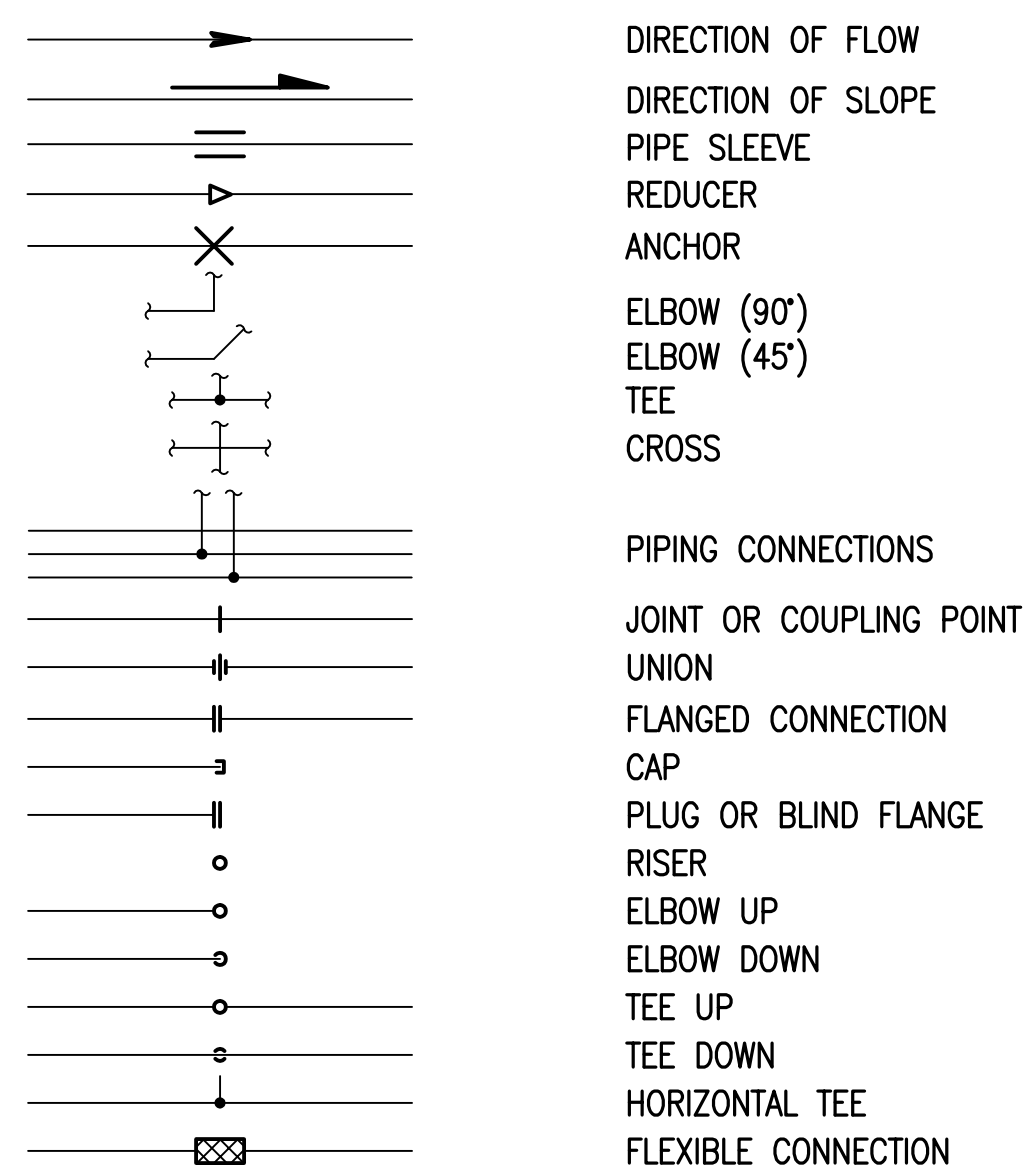
GENERAL NOTE

THIS IS A STANDARD LEGEND SHEET, THEREFORE, SOME SYMBOLS MAY APPEAR ON THIS SHEET THAT DO NOT APPEAR ON THE DRAWINGS.

MISC. VALVES & COCKS



MISC. FITTINGS & SYMBOLS



PSU STUDENT HEALTH & COUNSELING CENTER

1880 SW 6th AVENUE, PORTLAND, OREGON 97201
OWNER: PORTLAND STATE UNIVERSITY - FACILITIES AND PLANNING (FAP)
202 UNIVERSITY SERVICES BLDG - 617 SW MONTGOMERY
PORTLAND, OREGON 97201
CONTACT: KAY BYRNE 503-725-9837

PROJECT NO. 12-1121
ISSUE DATE 07.31.2013

REVISIONS

SHEET LEGENDS, SYMBOLS, & ABBREVIATIONS - MECHANICAL

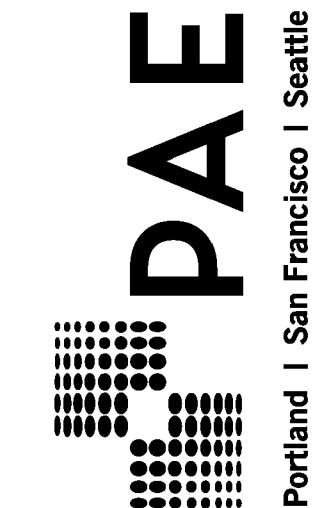
M0.1

PERMIT SET

© MERRYMAN BARNES ARCHITECTS, INC.



EXPIRES: 12.31.2015



PSU STUDENT HEALTH & COUNSELING CENTER

1880 SW 6TH AVENUE, PORTLAND, OREGON 97201
OWNER: PORTLAND STATE UNIVERSITY - FACILITIES AND PLANNING (FAP)
202 UNIVERSITY SERVICES BLDG - 617 SW MONTGOMERY
PORTLAND, OREGON 97201
CONTACT: KAY BYRNE 503-725-9837

VENTILATION SCHEDULE - MULTIPLE SPACES

Table with 14 columns: LOCATION, FLOOR AREA (SF), PRIMARY AIRFLOW RATE (CFM), OCCUPANCY CLASSIFICATION, PEOPLE OUTDOOR AIRFLOW RATE (CFM/PERSON), AREA OUTDOOR AIRFLOW RATE (CFM/SF), DEFAULT OCCUPANT DENSITY (PEOPLE/1000SF), CODE POPULATION, DESIGN POPULATION, OUTDOOR AIRFLOW RATE (CFM), ZONE AIR DISTRIBUTION EFFECTIVENESS (Ez), OUTDOOR AIR INTAKE (Voz CFM), NOTES.

SPLIT SYSTEM FAN COIL SCHEDULE (INDOOR)

Table with columns: TAG NUMBER, LOCATION, SERVICE, TYPE, AIRFLOW (CFM), FILTER MERV RATING, TOTAL CAPACITY (MBH), SENSIBLE CAPACITY (MBH), EAT (°F DBWB), TOTAL CAPACITY (MBH), EAT (°F), FLA, VOLT/PHASE, (S)JEER, COP, APPROX. WEIGHT (LBS), MANUFACTURER & MODEL, NOTES.

AIR COOLED HEAT PUMP UNIT SCHEDULE (OUTDOOR)

Table with columns: TAG NUMBER, LOCATION, SERVICE, MCA, VOLT/PHASE, TYPE, CHARGE (LBS), (S)JEER, COP, APPROX. WEIGHT (LBS), MANUFACTURER & MODEL, NOTES.

FAN SCHEDULE

Table with columns: TAG NUMBER, LOCATION, TYPE, AIRFLOW (CFM), TSP (IN WG), FAN RPM, MOTOR W, VOLT/PHASE, VFD, APPROX. WEIGHT (LBS), MANUFACTURER & MODEL, NOTES.

EXISTING FAN COIL (INDOOR UNIT) SCHEDULE

Table with columns: TAG NUMBER, LOCATION, TYPE, SUPPLY AIRFLOW (CFM), FILTER MERV RATING, TOTAL CAPACITY (MBH), SENSIBLE CAPACITY (MBH), EAT (°F DBWB), TOTAL CAPACITY (MBH), EAT (°F), FLA, VOLT/PHASE, (S)JEER, COP, APPROX. WEIGHT (LBS), MANUFACTURER & MODEL, NOTES.

DESIGN CONDITIONS

Table with columns: SPACE, TEMPERATURE, HUMIDITY, WINTER, HUMIDITY, TEMPERATURE, HUMIDITY, SUMMER.

CEILING SUPPLY DIFFUSERS (C-1)

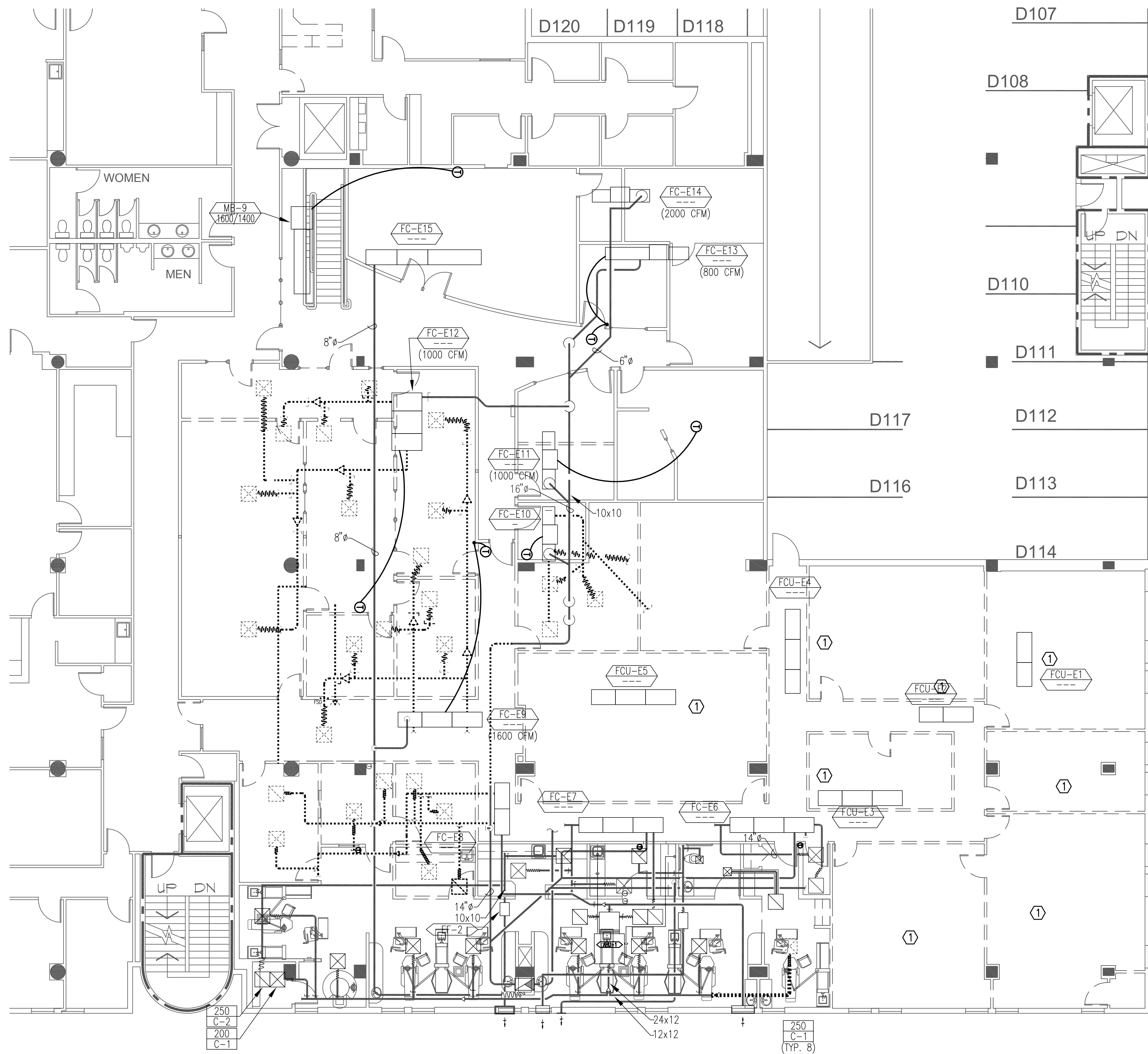
Table with columns: CFM RANGE, SQUARE NECK SIZE (BASED ON TITUS FMC), FACE SIZE (T-BAR SURFACE).

RETURN AIR GRILLES (C-2)

Table with columns: CFM RANGE, SQUARE NECK SIZE (BASED ON TITUS PAR), FACE SIZE (T-BAR SURFACE).

Date: 8/6/13 Time: 4:57pm File: P:\2012\12-1634-00 - PSU Center for Student Health_Counseling\01 Drawings\CAD\12-1634-M02.dwg User: danyrach

Date: 8/6/13 Time: 4:57pm File: P:\2012\12-1634-00 - PSU Center for Student Health_Counseling\01 Drawings\CAD\12-1634 M11.dwg User: dany.rachi



GENERAL NOTES:

1. THE CONTRACTOR SHALL VERIFY ALL DIMENSIONS AND EXISTING CONDITIONS IN THE FIELD PRIOR TO THE START OF WORK.
2. THE PLANS ARE DIAGRAMMATIC AND SHOW GENERALLY THE LOCATIONS OF THE FIXTURES, EQUIPMENT, DUCTWORK, PIPE LINES, ETC., AND ARE NOT TO BE SCALED.
3. PATCH AND REPAIR ALL OPENINGS MADE BY REMOVALS.
4. PROVIDE RATED FIRESTOPPING AT ALL PENETRATIONS THROUGH RATED ENCLOSURES, RATED SHAFTS, FLOOR/CEILING ASSEMBLIES AND ROOF/CEILING ASSEMBLIES
5. PSU TO PROVIDE ALL DDC CONTROLS AND PROGRAMMING, CONTRACTOR TO PROVIDE ALL REQUIRED POWER WIRING.
6. PREBALANCE ALL EXISTING FAN COIL UNITS ON THIS FLOOR AND SUBMIT SUPPLY, RETURN AND OUTSIDE AIRFLOW INFORMATION PRIOR TO ANY DEMOLITION.
7. ALL CEILING GRILLES TO INCLUDE CEILING RADIATION FIRE DAMPER.

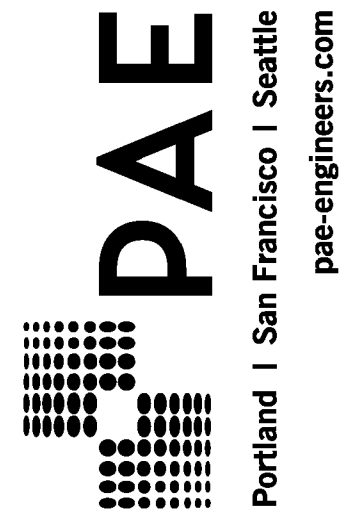
NOTES:

- ① REMOVE ALL EXISTING DUCTWORK IN THIS AREA BACK TO THE FAN COIL UNIT.



PSU STUDENT HEALTH & COUNSELING CENTER

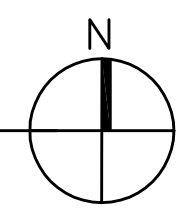
1880 SW 6th AVENUE, PORTLAND, OREGON 97201
 OWNER: PORTLAND STATE UNIVERSITY - FACILITIES AND PLANNING (FAP)
 202 UNIVERSITY SERVICES BLDG - 617 SW MONTGOMERY
 PORTLAND, OREGON 97201
 CONTACT: KAY BYRNE 503-725-9837

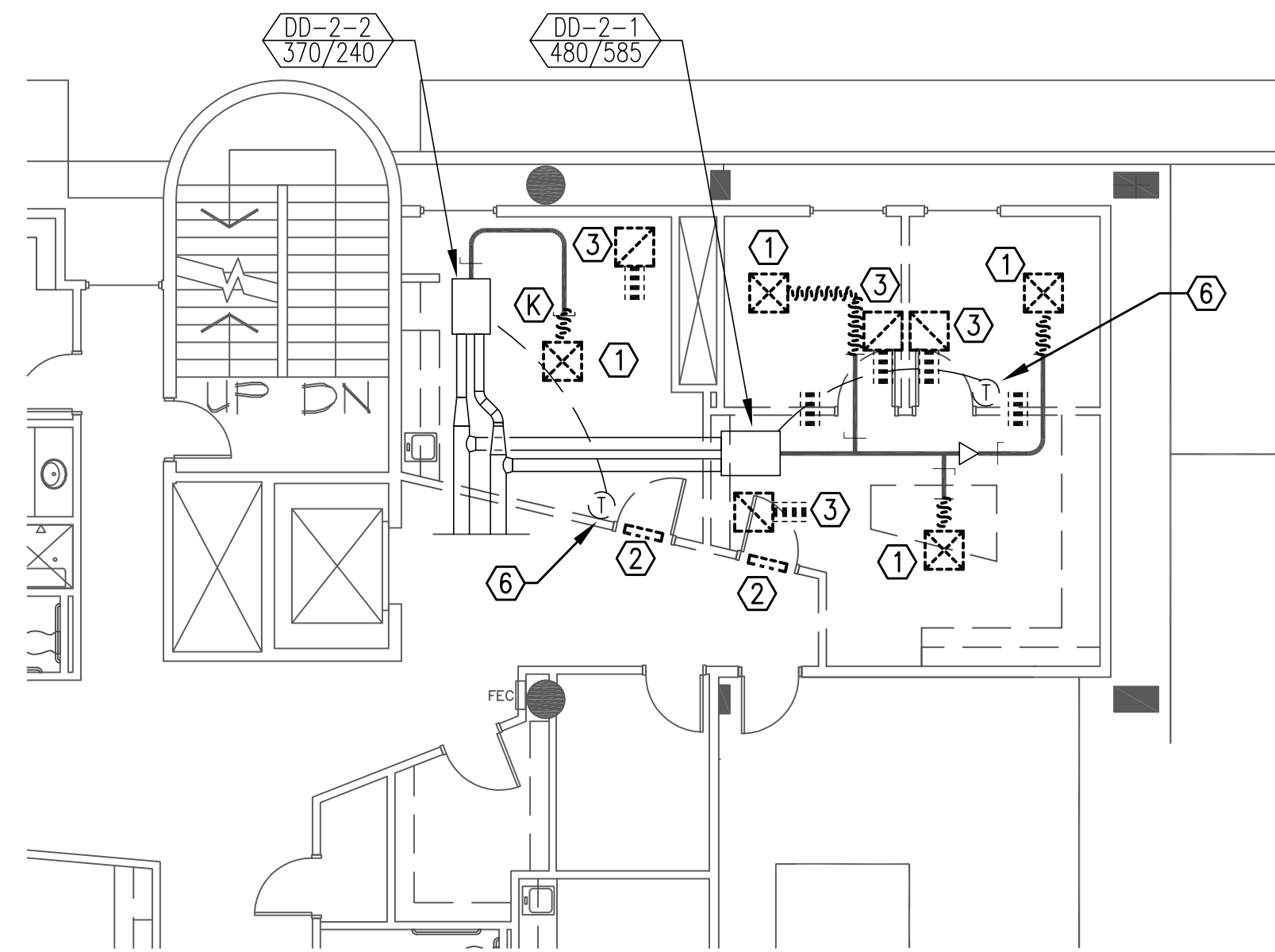


PROJECT NO.	ISSUE DATE
12-1121	07.31.2013
REVISIONS	

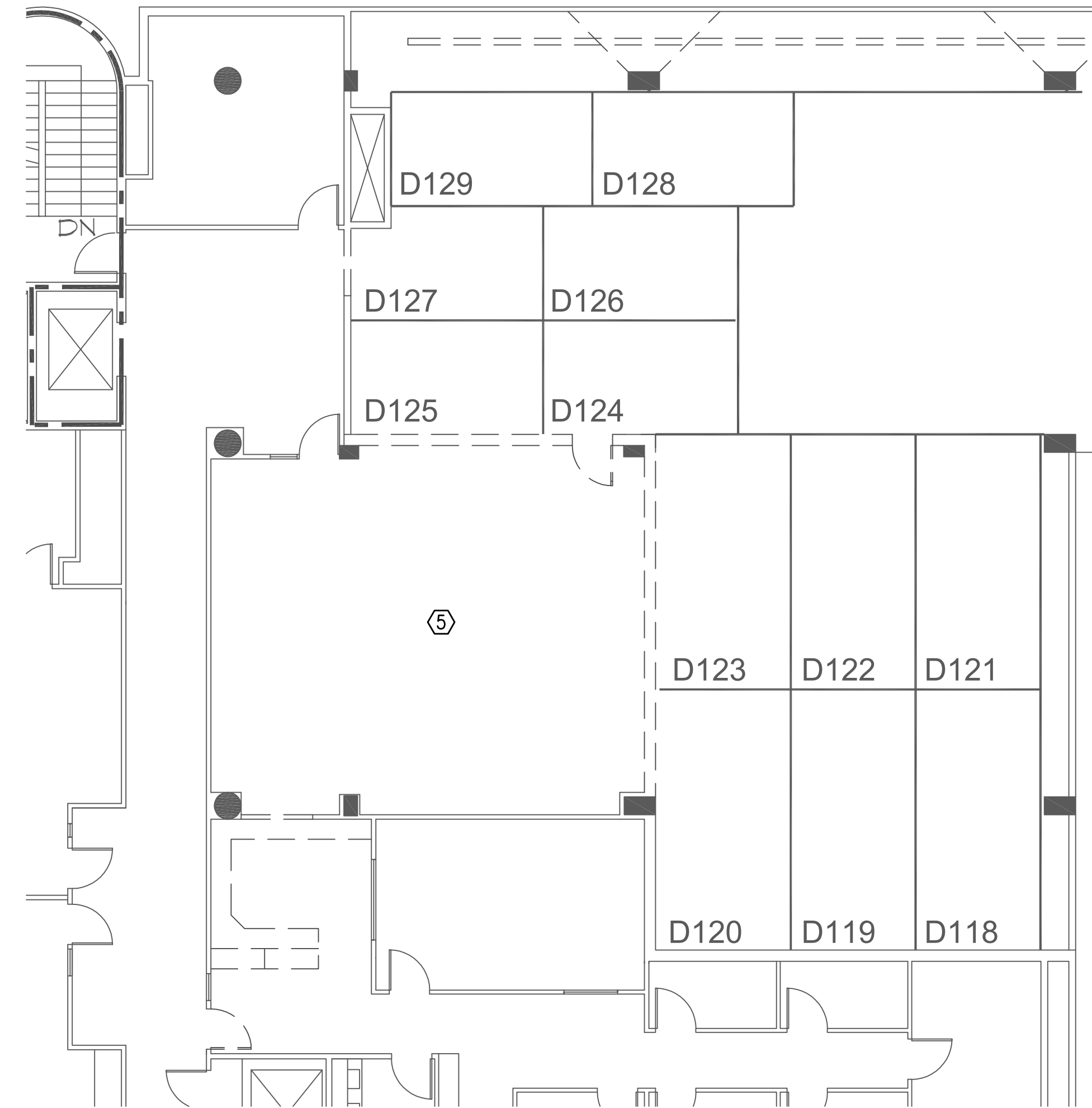
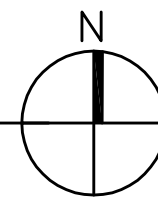
SHEET
3RD FLOOR DEMO
PLAN - MECHANICAL
M1.1
 PERMIT SET
© MERRYMAN BARNES ARCHITECTS, INC.

1
 M1.1
THIRD FLOOR DEMO PLAN - MECHANICAL
 1/8" = 1'-0"

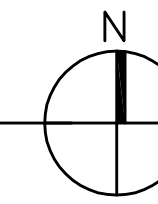




1 SECOND FLOOR DEMO PARTIAL PLAN - MECHANICAL
M1.2 1/8" = 1'-0"



2 THIRD FLOOR DEMO PARTIAL PLAN - MECHANICAL
M1.2 1/8" = 1'-0"



GENERAL NOTES:

1. THE CONTRACTOR SHALL VERIFY ALL DIMENSIONS AND EXISTING CONDITIONS IN THE FIELD PRIOR TO THE START OF WORK.
2. THE PLANS ARE DIAGRAMMATIC AND SHOW GENERALLY THE LOCATIONS OF THE FIXTURES, EQUIPMENT, DUCTWORK, PIPE LINES, ETC., AND ARE NOT TO BE SCALED.
3. PATCH AND REPAIR ALL OPENINGS MADE BY REMOVALS.
4. PROVIDE RATED FIRESTOPPING AT ALL PENETRATIONS THROUGH RATED ENCLOSURES, RATED SHAFTS, FLOOR/CEILING ASSEMBLIES AND ROOF/CEILING ASSEMBLIES
5. PSU TO PROVIDE ALL DDC CONTROLS AND PROGRAMMING, CONTRACTOR TO PROVIDE ALL REQUIRED POWER WIRING.
6. PREBALANCE ALL EXISTING FAN COIL UNITS ON THIS FLOOR AND SUBMIT SUPPLY, RETURN AND OUTSIDE AIRFLOW INFORMATION PRIOR TO ANY DEMOLITION.
7. ALL CEILING GRILLES TO INCLUDE CEILING RADIATION FIRE DAMPER.

NOTES:

- ① REMOVE SUPPLY DIFFUSER AND FLEX DUCT. HARD DUCT TO REMAIN.
- ② REMOVE WALL TRANSFER GRILLE.
- ③ REMOVE RETURN GRILLES AND BOOT.
- ④ SUPPLY GRILLE TO BE RELOCATED TO NEW CEILING.
- ⑤ REMOVE ALL FLEX DUCTWORK AND GRILLES IN THIS ROOM. HARD DUCT TO REMAIN FOR RECONNECTION.
- ⑥ THERMOSTAT TO BE REMOVED AND SAVED FOR REINSTALLATION IN NEW WORK.



PSU STUDENT HEALTH & COUNSELING CENTER

1880 SW 6th AVENUE, PORTLAND, OREGON 97201
OWNER: PORTLAND STATE UNIVERSITY - FACILITIES AND PLANNING (FAP)
202 UNIVERSITY SERVICES BLDG - 617 SW MONTGOMERY
PORTLAND, OREGON 97201
CONTACT: KAY BYRNE 503-725-9837

PROJECT NO.	ISSUE DATE
12-1121	07.31.2013

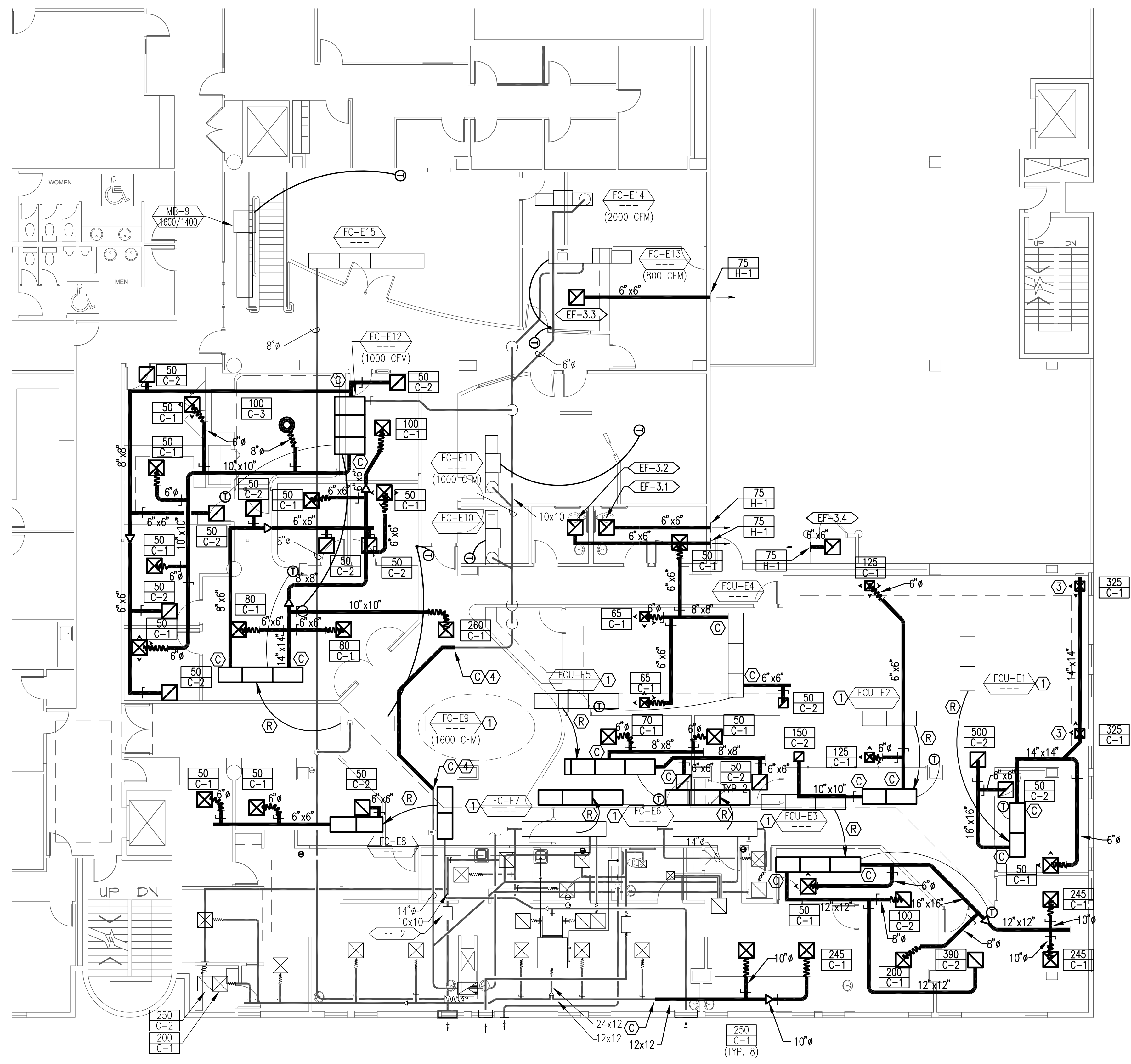
REVISIONS

SHEET
2ND, 3RD DEMO PARTIAL
PLANS - MECHANICAL

M1.2

PERMIT SET
© MERRYMAN BARNES ARCHITECTS, INC.

Date: 8/6/13 Time: 4:56pm File: P:\2012\12-1634-00 - PSU Center for Student Health_Counseling\01 Drawings\CAD\12-1634 M21.dwg User: danyirachi



1 THIRD FLOOR PLAN - MECHANICAL
M2.1 1/8" = 1'-0"

GENERAL NOTES:

1. THE CONTRACTOR SHALL VERIFY ALL DIMENSIONS AND EXISTING CONDITIONS IN THE FIELD PRIOR TO THE START OF WORK.
2. THE PLANS ARE DIAGRAMMATIC AND SHOW GENERALLY THE LOCATIONS OF THE FIXTURES, EQUIPMENT, DUCTWORK, PIPE LINES, ETC., AND ARE NOT TO BE SCALED.
3. PATCH AND REPAIR ALL OPENINGS MADE BY REMOVALS.
4. PROVIDE RATED FIRESTOPPING AT ALL PENETRATIONS THROUGH RATED ENCLOSURES, RATED SHAFTS, FLOOR/CEILING ASSEMBLIES AND ROOF/CEILING ASSEMBLIES
5. PSU TO PROVIDE ALL DDC CONTROLS AND PROGRAMMING, CONTRACTOR TO PROVIDE ALL REQUIRED POWER WIRING.
6. PREBALANCE ALL EXISTING FAN COIL UNITS ON THIS FLOOR AND SUBMIT SUPPLY, RETURN AND OUTSIDE AIRFLOW INFORMATION PRIOR TO ANY DEMOLITION.
7. ALL CEILING GRILLES TO INCLUDE CEILING RADIATION FIRE DAMPER.

NOTES:

- ① RELOCATE EXISTING FAN COIL UNIT TO NEW LOCATION SHOWN. EXTEND REFRIGERANT SUPPLY AND RETURN LINES, CONDENSATE DRAIN, AND OUTSIDE AIR DUCT (NOT SHOWN ON PLANS) TO NEW LOCATION. PROVIDE ALL WORK NECESSARY TO ACCOMPLISH UNIT RELOCATION INCLUDING REFRIGERANT PURGE AND CHARGE. PIPING TO BE TESTED AT A MINIMUM 500 MICRON VACUUM AND HELD FOR 15 MINUTES. TEST TO BE WITNESSED BY THE OWNER.
- ② EXTEND EXISTING SUPPLY AND RETURN DUCTWORK TO NEW FAN COIL LOCATION.
- ③ CONNECT DIFFUSER TO BOTTOM OF DUCT. SEE SHEET M5.1 DETAIL 2.
- ④ VERIFY EXISTING SIZE AS 14"Ø.



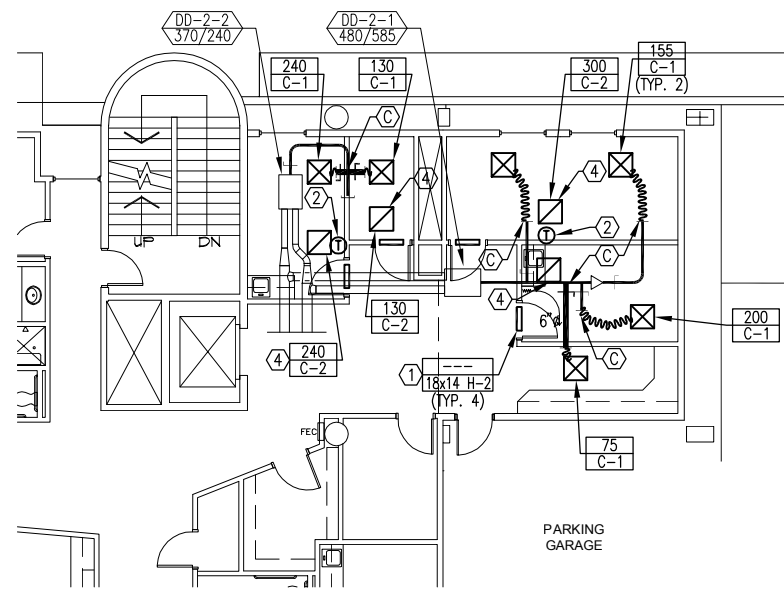
PSU STUDENT HEALTH & COUNSELING CENTER

1880 SW 6th AVENUE, PORTLAND, OREGON 97201
 OWNER: PORTLAND STATE UNIVERSITY - FACILITIES AND PLANNING (FAP)
 202 UNIVERSITY SERVICES BLDG - 617 SW MONTGOMERY
 PORTLAND, OREGON 97201
 CONTACT: KAY BYRNE 503-725-9837

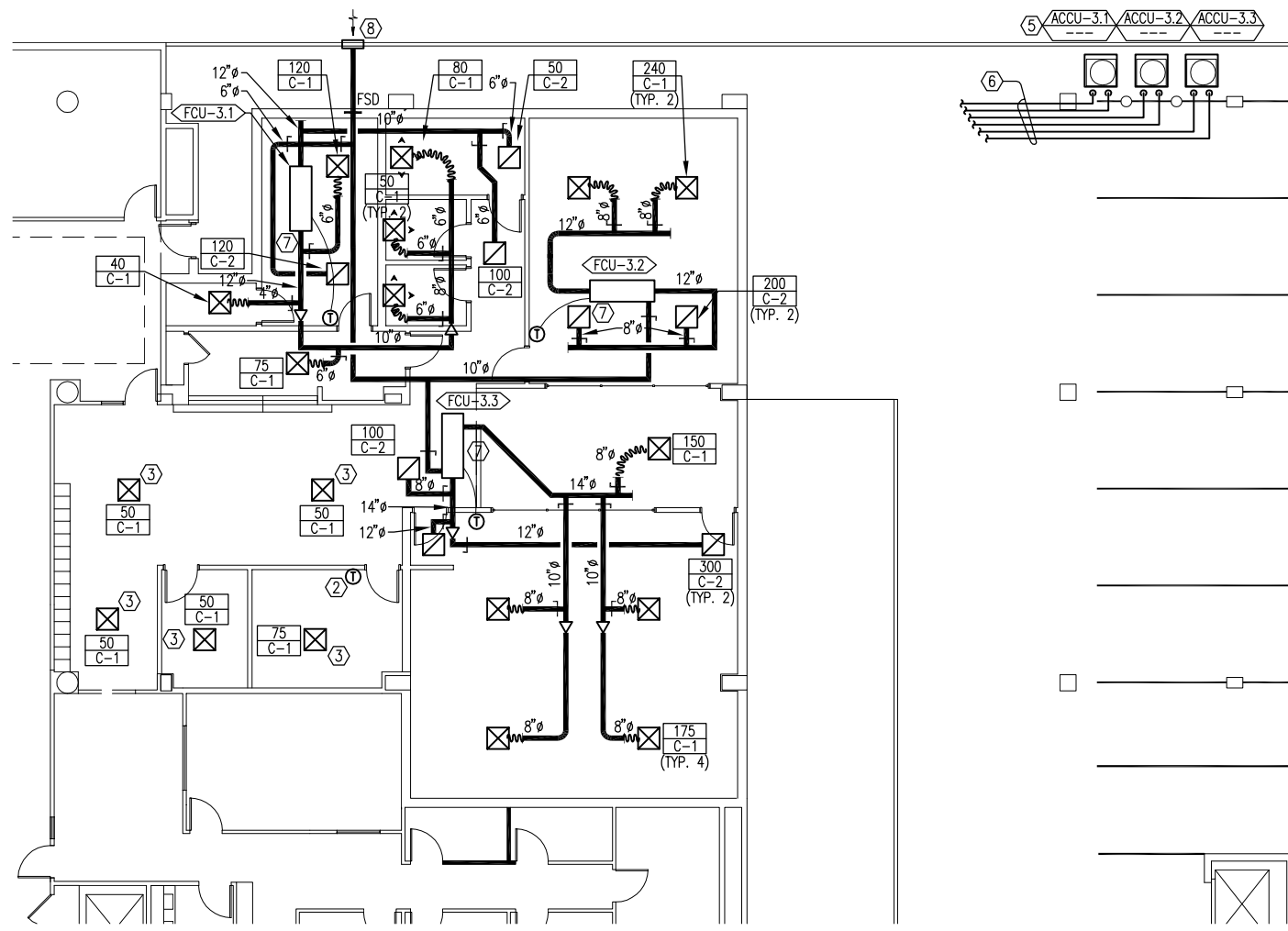
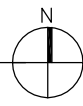
PROJECT NO.	ISSUE DATE
12-1121	07.31.2013
REVISIONS	

SHEET
3RD FLOOR PLAN - MECHANICAL
M2.1
 PERMIT SET
© MERRYMAN BARNES ARCHITECTS, INC.

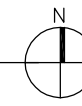
Date: 8/6/13 Time: 4:56pm File: P:\2012\12-1634.00 - PSU Center for Student Health_Counseling\01 Drawings\CAD\12-1634_M22.dwg User: danyrachi



1
M2.2
1/8" = 1'-0"



2
M2.2
1/8" = 1'-0"



GENERAL NOTES:

1. THE CONTRACTOR SHALL VERIFY ALL DIMENSIONS AND EXISTING CONDITIONS IN THE FIELD PRIOR TO THE START OF WORK.
2. THE PLANS ARE DIAGRAMMATIC AND SHOW GENERALLY THE LOCATIONS OF THE FIXTURES, EQUIPMENT, DUCTWORK, PIPE LINES, ETC., AND ARE NOT TO BE SCALED.
3. PATCH AND REPAIR ALL OPENINGS MADE BY REMOVALS.
4. PROVIDE RATED FIRESTOPPING AT ALL PENETRATIONS THROUGH RATED ENCLOSURES, RATED SHAFTS, FLOOR/CEILING ASSEMBLIES AND ROOF/CEILING ASSEMBLIES
5. PSU TO PROVIDE ALL DDC CONTROLS AND PROGRAMMING, CONTRACTOR TO PROVIDE ALL REQUIRED POWER WIRING.
6. PREBALANCE ALL EXISTING FAN COIL UNITS ON THIS FLOOR AND SUBMIT SUPPLY, RETURN AND OUTSIDE AIRFLOW INFORMATION PRIOR TO ANY DEMOLITION.
7. ALL CEILING GRILLES TO INCLUDE CEILING RADIATION FIRE DAMPER.

NOTES:

- ① WALL GRILLE LOCATED ABOVE CEILING LEVEL FOR TRANSFER AT 10' AFF.
- ② THERMOSTAT RELOCATED TO NEW WALL LOCATION.
- ③ CONNECT NEW SUPPLY GRILLE TO EXISTING DUCTWORK AND BALANCE TO NEW CFM SHOWN.
- ④ SEE DETAIL 6/M5.1 FOR RETURN BOOT DETAIL.
- ⑤ COORDINATE ACCU LOCATION AND ENCLOSURE WITH ARCHITECT AND OWNER.
- ⑥ ROUTE REFRIGERANT PIPING TIGHT TO STRUCTURE AND WITH MINIMUM PIPING RUN TO FCU. REFRIGERANT PIPE SIZE PER MANUFACTURERS INSTRUCTIONS. PIPING TO BE TESTED AT A MINIMUM 500 MICRON VACUUM AND HELD FOR 15 MINUTES. TEST TO BE WITNESSED BY THE OWNER.
- ⑦ ROUTE CONDENSATE TO SINK TAIL PIECE IN KITCHEN.
- ⑧ PROVIDE 36X16 INTAKE LOUVER WITH BIRD SCREEN AND PLENUM.



PSU STUDENT HEALTH & COUNSELING CENTER

1880 SW 6th AVENUE, PORTLAND, OREGON 97201
 OWNER: PORTLAND STATE UNIVERSITY - FACILITIES AND PLANNING (FAP)
 202 UNIVERSITY SERVICES BLDG - 617 SW MONTGOMERY
 PORTLAND, OREGON 97201
 CONTACT: KAY BYRNE 503-725-9837

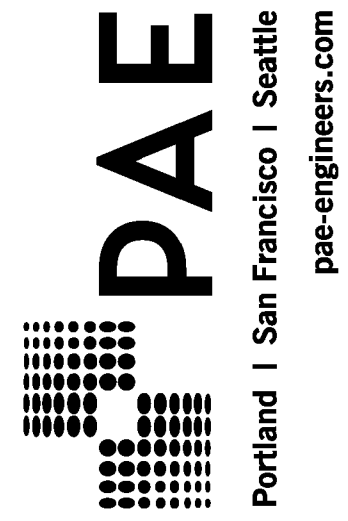


PROJECT NO.	ISSUE DATE
12-1121	07.31.2013
REVISIONS	

SHEET
2ND, 3RD FLOOR PARTIAL PLANS - MECHANICAL

M2.2

PERMIT SET
 © HERRYMAN BARNES ARCHITECTS, INC.



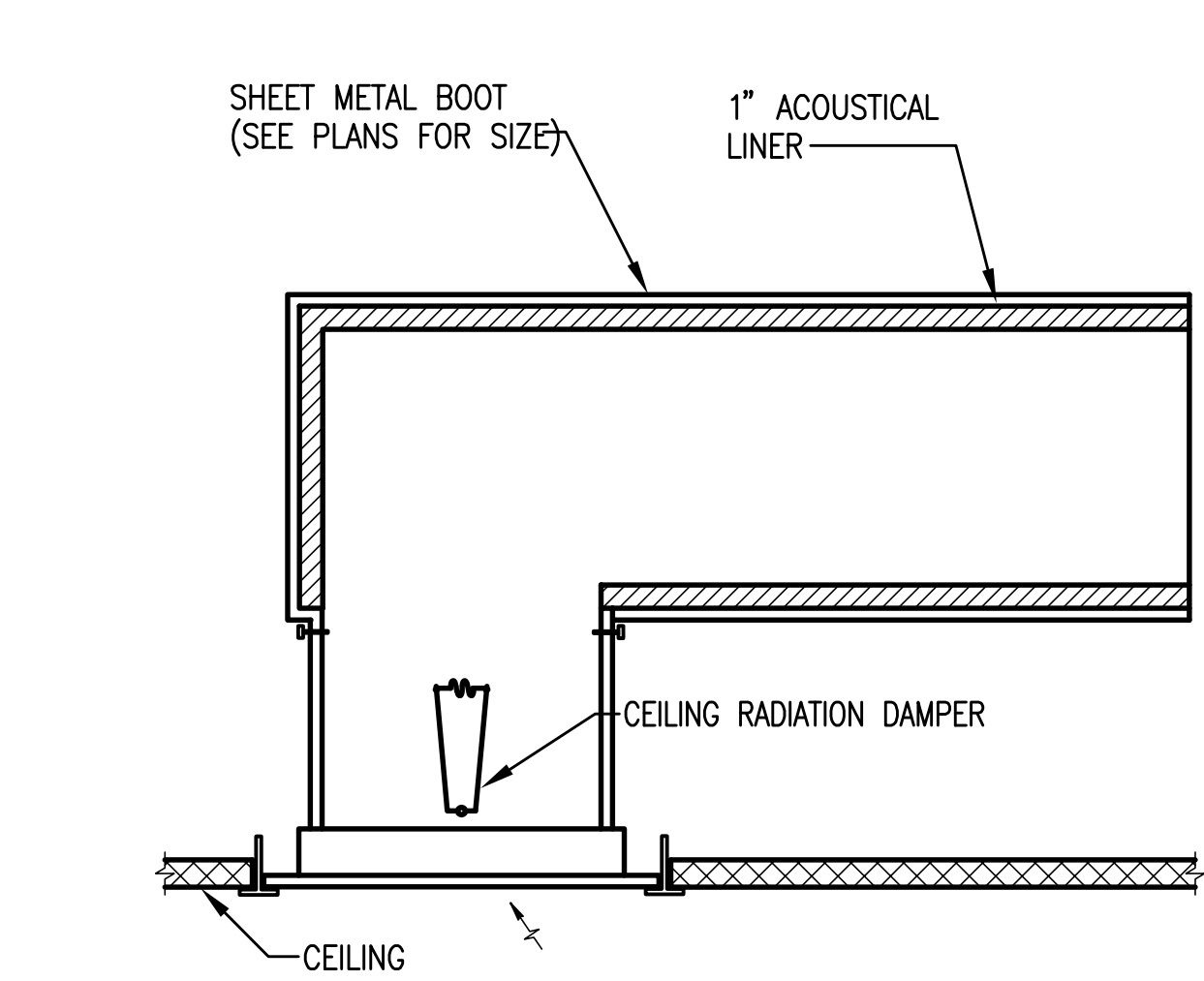
PSU STUDENT HEALTH & COUNSELING CENTER

1880 SW 6th AVENUE, PORTLAND, OREGON 97201
 OWNER: PORTLAND STATE UNIVERSITY - FACILITIES AND PLANNING (FAP)
 202 UNIVERSITY SERVICES BLDG - 617 SW MONTGOMERY
 PORTLAND, OREGON 97201
 CONTACT: KAY BYRNE 503-725-9837

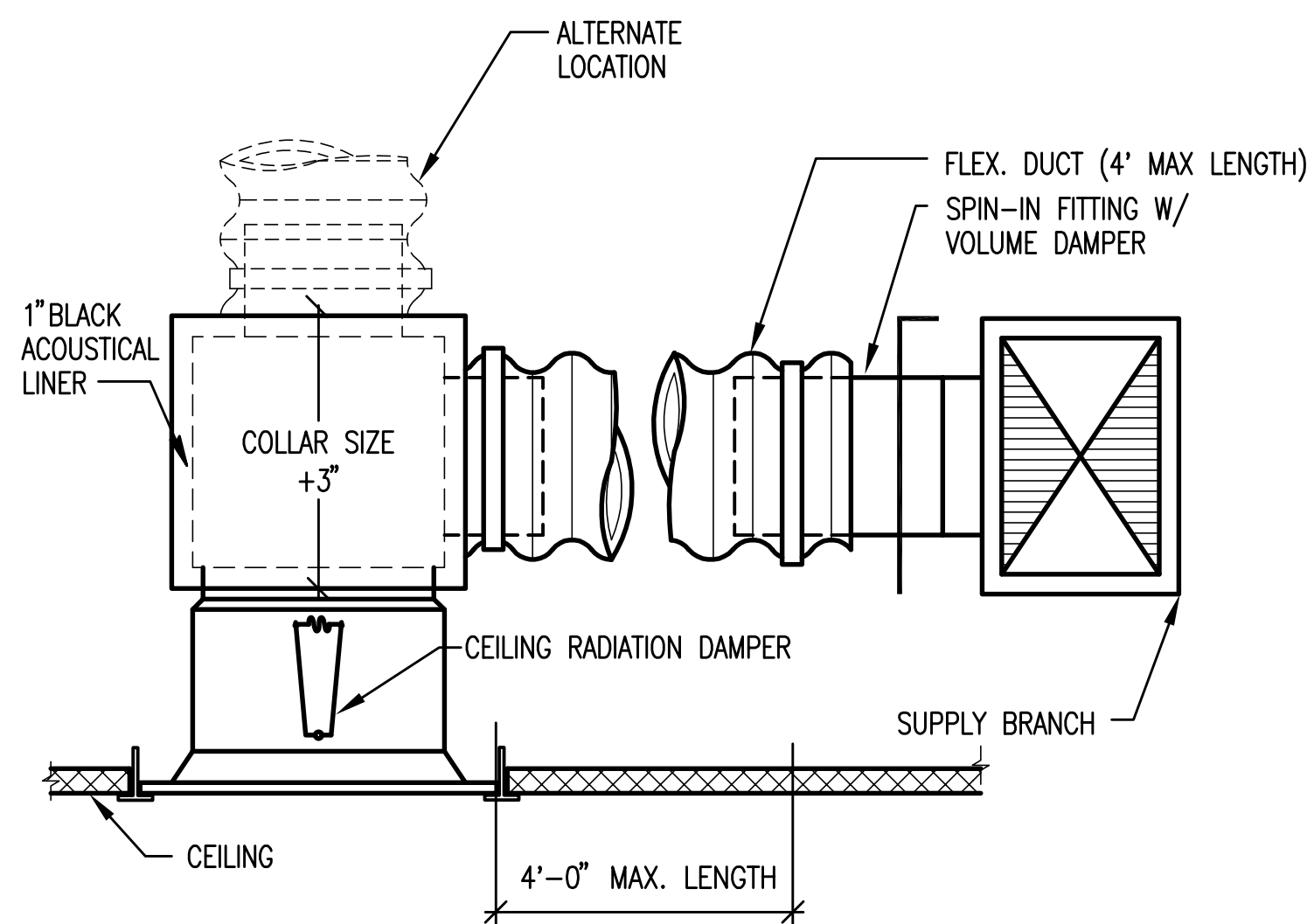
PROJECT NO. 12-1121
 ISSUE DATE 07.31.2013

REVISIONS

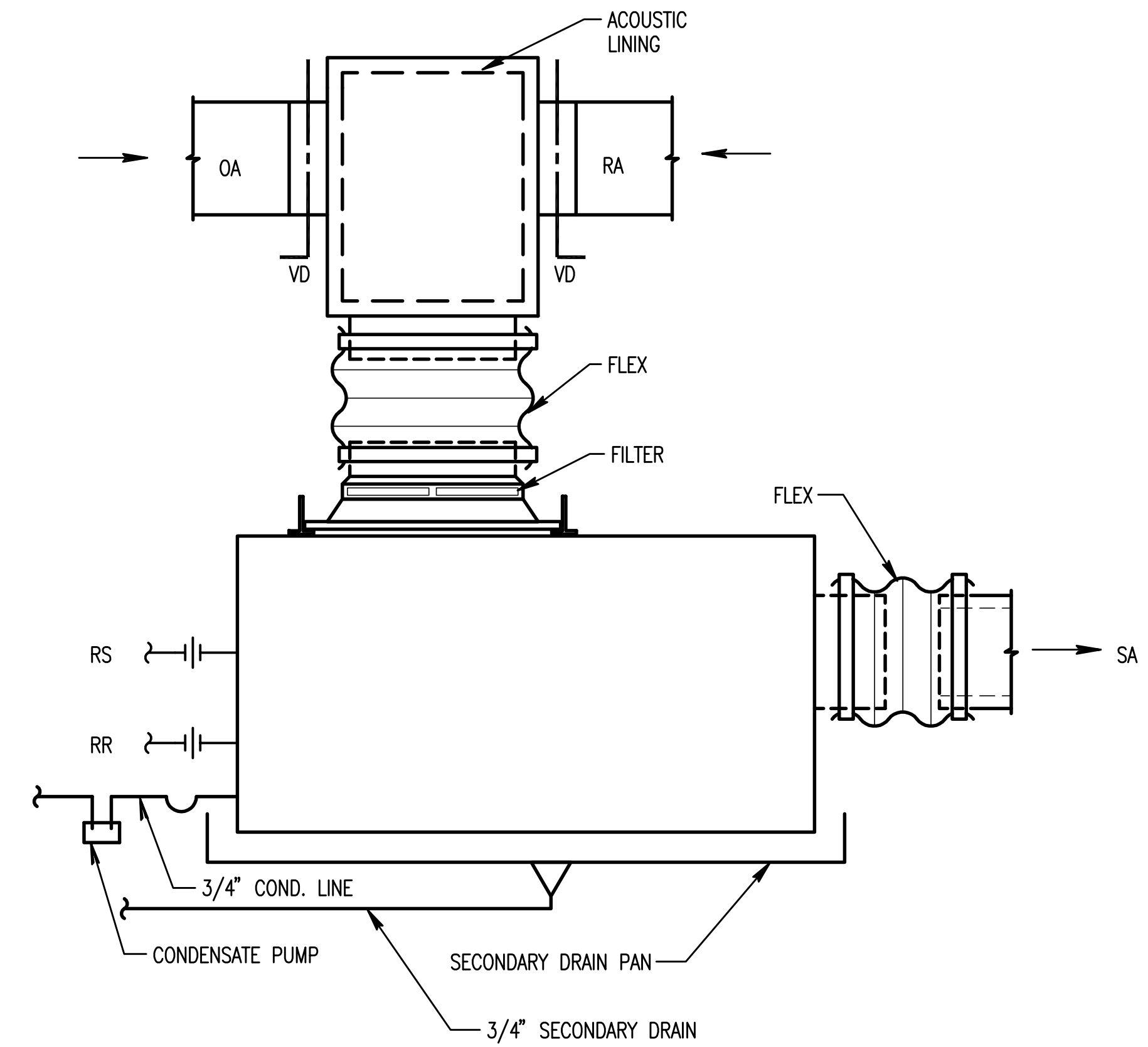
SHEET
 DETAILS
 MECHANICAL
M5.1
 PERMIT SET
© MERRYMAN BARNES ARCHITECTS, INC.



6 RETURN AIR BOOT
 M5.1 SCALE: NONE

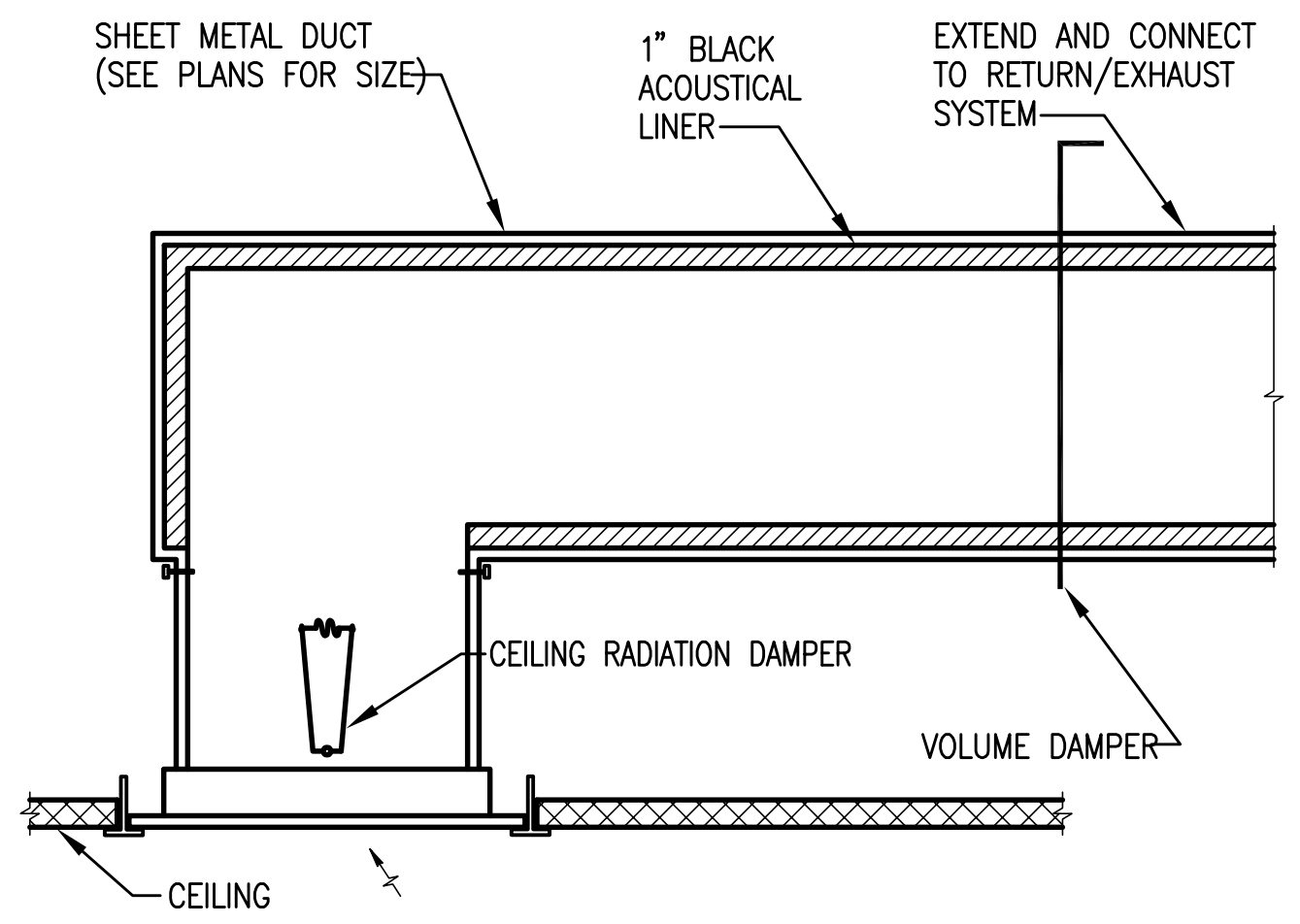


1 TYPICAL SQUARE NECK T-BAR DIFFUSER
 M51 SCALE: NONE

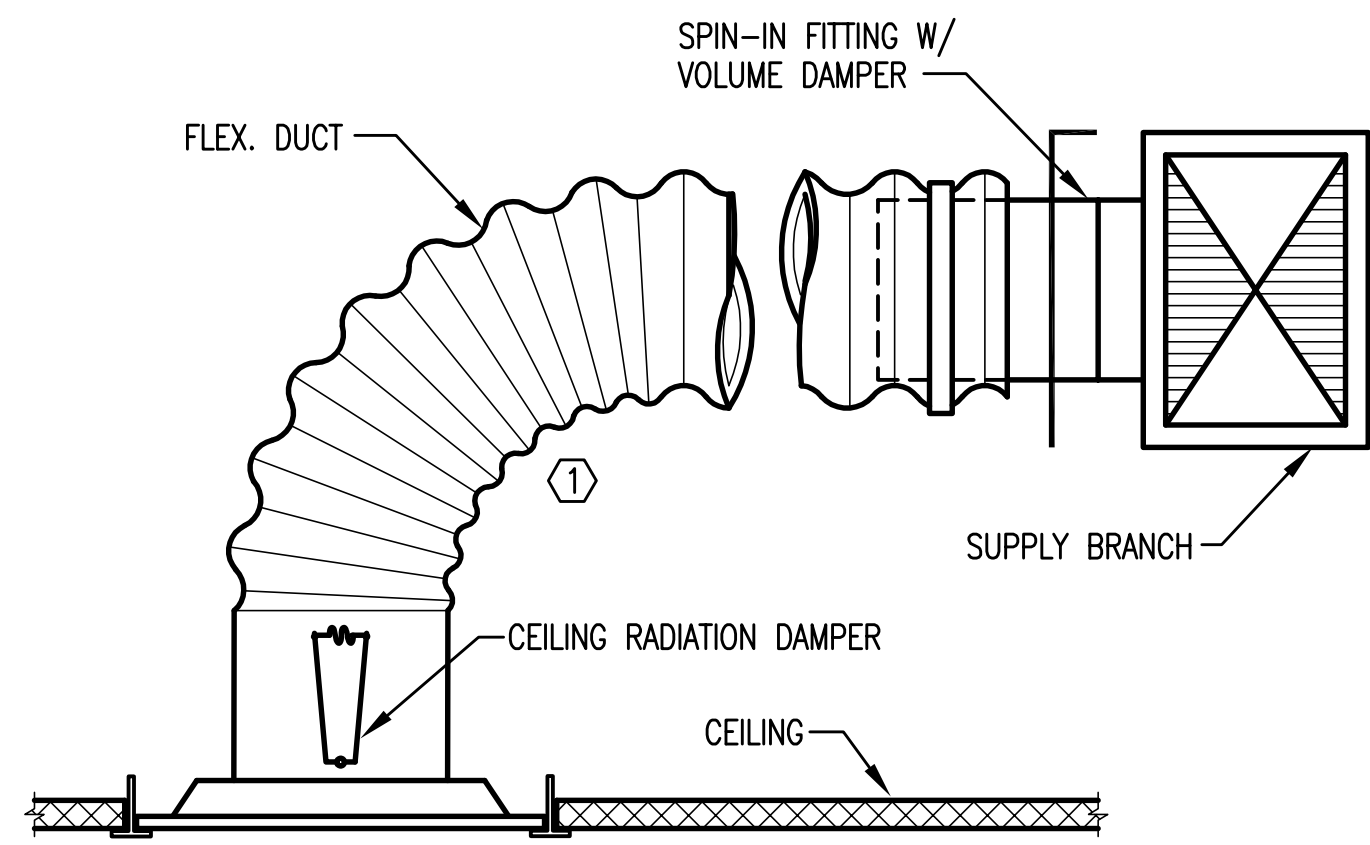


NOTES:
 1. PROVIDE SECONDARY DRAIN ON ALL NEW AND RELOCATED UNITS

10 TYPICAL HEAT PUMP
 M508 SCALE: NONE



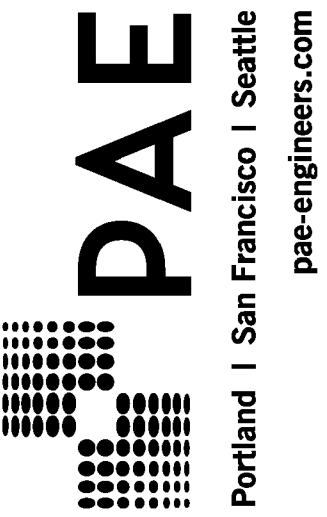
3 DUCTED RETURN/EXHAUST GRILLE
 M51 SCALE: NONE



NOTES:
 ① 1.5 DIA. MINIMUM FLEX DUCT RADIUS (4' MAX LENGTH), WHERE 1.5 DIA. TURN CAN NOT BE MET USE DETAIL 2/M6.01

2 TYPICAL ROUND NECK T-BAR DIFFUSER
 M51 SCALE: NONE

Date: 8/6/13 Time: 4:56pm File: P:\2012\12-1634-00 - PSU Center for Student Health_Counseling\01 Drawings\CAD\12-1634 M51.dwg User: danyrach



PSU STUDENT HEALTH & COUNSELING CENTER

1880 SW 6th AVENUE, PORTLAND, OREGON 97201
 OWNER: PORTLAND STATE UNIVERSITY - FACILITIES AND PLANNING (FAP)
 202 UNIVERSITY SERVICES BLDG - 617 SW MONTGOMERY
 PORTLAND, OREGON 97201
 CONTACT: KAY BYRNE 503-725-9837

PROJECT NO. 12-1121 ISSUE DATE 07.31.2013
 REVISIONS

SHEET
**SCHEDULES
 PLUMBING**
P0.2
 PERMIT SET
 © MERRYMAN BARNES ARCHITECTS, INC.

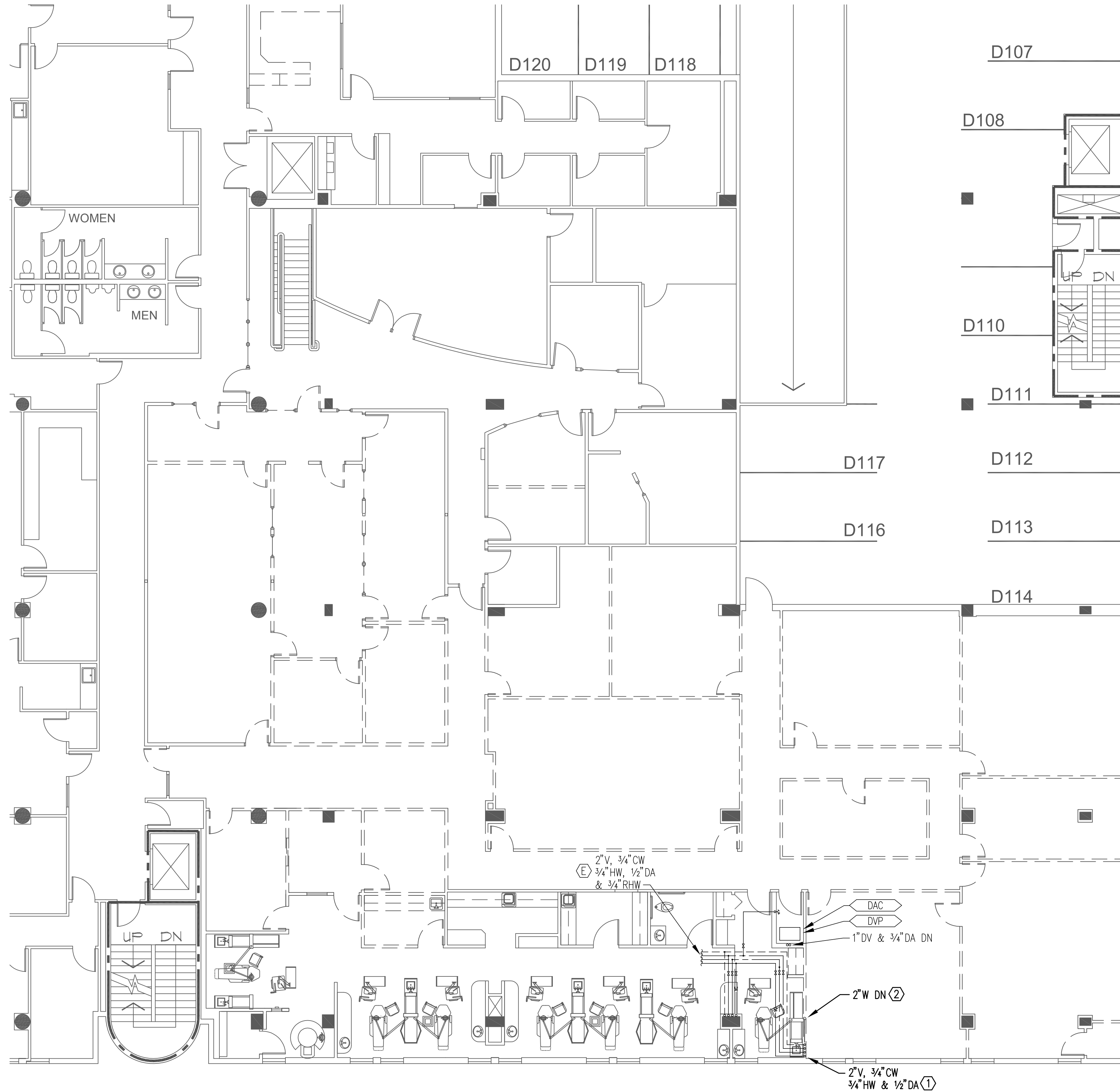
OWNER FURNISHED EQUIPMENT

SYMBOL	DESCRIPTION	ROUGH-IN SIZE-INCHES						REMARKS
		W	V	CW	HW	DA	DV	
①	CHAIR UTILITIES	-	-	1/2	-	1/2	1/2	
③	ASSISTANCE PREFERENCE MOUNT CART ASSEMBLY	-	-	-	-	-	3/4	(1)X(2)
⑤	SIDE CABINET WITH SINK	2	2	1/2	1/2	1/2	-	(1)X(3)
⑦	CENTRAL DIVIDER CABINET WITH SINK	2	1 1/2	1/2	1/2	1/2	-	(1)X(3)

NOTES:
 ① ROUGH-IN 1/2" DENTAL AIR WITH 3/8" COMPRESSION ANGLE STOP.
 ② ROUGH-IN & CONNECT 3/4" DENTAL VACCUM 3" ABOVE FINISHED FLOOR.
 ③ SINK & FAUCET PROVIDED AS PART OF DENTAL EQUIPMENT VENDER.

PLUMBING FIXTURE/EQUIPMENT SCHEDULE

SYMBOL	DESCRIPTION	ROUGH-IN SIZE-INCHES				REMARKS
		W	V	CW	HW	
S-1	SINK	2	1 1/2	1/2	1/2	
S-2	SINK	2	1 1/2	1/2	1/2	ADA
WC-1	WATER CLOSET	3	2	1 1/4	-	ADA
L-1	LAVATORY	1 1/2	1 1/2	1/2	1/2	WALL HUNG ADA
DW-1	DISHWASHER	-	-	-	1/2	DRAIN TO SINK TAILPIECE
DF-1	DRINKING FOUNTAIN	1 1/2	1 1/2	1/2	-	WALL HUNG ADA



GENERAL NOTES:

1. THE CONTRACTOR SHALL VERIFY ALL DIMENSIONS AND EXISTING CONDITIONS IN THE FIELD PRIOR TO THE START OF WORK.
2. THE PLANS ARE DIAGRAMMATIC AND SHOW GENERALLY THE LOCATIONS OF THE FIXTURES, EQUIPMENT, DUCTWORK, PIPE LINES, ETC., AND ARE NOT TO BE SCALED.
3. PATCH AND REPAIR ALL OPENINGS MADE BY REMOVALS.
4. PROVIDE RATED FIRESTOPPING AT ALL PENETRATIONS THROUGH RATED ENCLOSURES, RATED SHAFTS, FLOOR/CEILING ASSEMBLIES AND ROOF/CEILING ASSEMBLIES

NOTES:

- ① PIPING TO BE REMOVED FROM WALL AND LEFT ABOVE CEILING FOR EXTENSION UNDER NEW WORK.
- ② WASTE PIPELINE TO BE REMOVED TO BELOW SLAB.



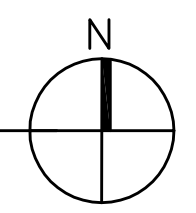
PSU STUDENT HEALTH & COUNSELING CENTER

1880 SW 6th AVENUE, PORTLAND, OREGON 97201
 OWNER: PORTLAND STATE UNIVERSITY - FACILITIES AND PLANNING (FAP)
 202 UNIVERSITY SERVICES BLDG - 617 SW MONTGOMERY
 PORTLAND, OREGON 97201
 CONTACT: KAY BYRNE 503-725-9837

PROJECT NO.	ISSUE DATE
12-1121	07.31.2013
REVISIONS	

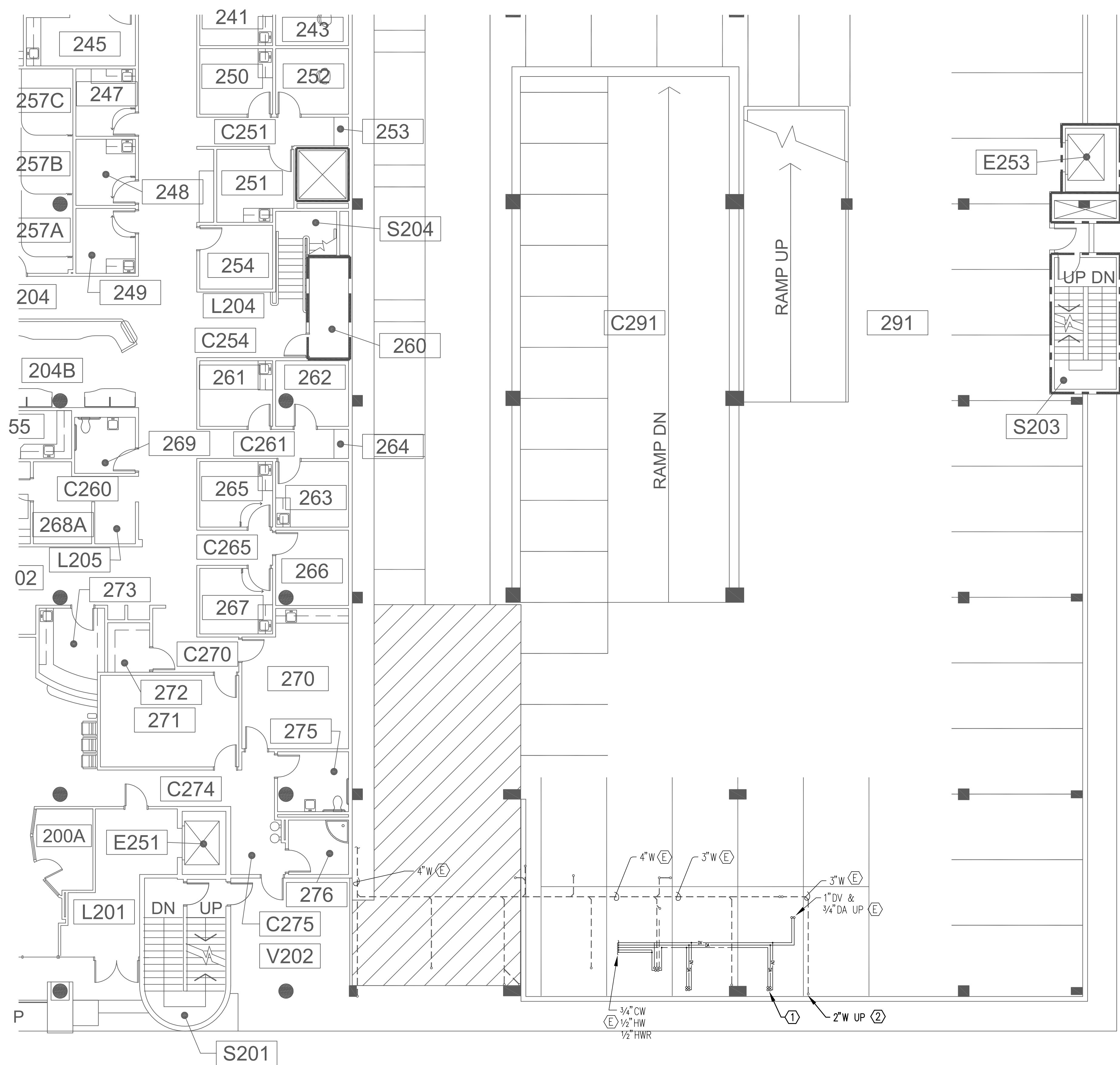
SHEET
**3RD FLOOR DEMO
 PLAN - PLUMBING**
P1.1
 PERMIT SET
© MERRYMAN BARNES ARCHITECTS, INC.

1 THIRD FLOOR DEMOLITION PLAN - PLUMBING
 P1.1 1/8" = 1'-0"



Date: 8/6/13 Time: 4:56pm File: P:\2012\12-1634.00 - PSU Center for Student Health_Counseling\01 Drawings\CAD\12-1634 P11.dwg User: donyrachi

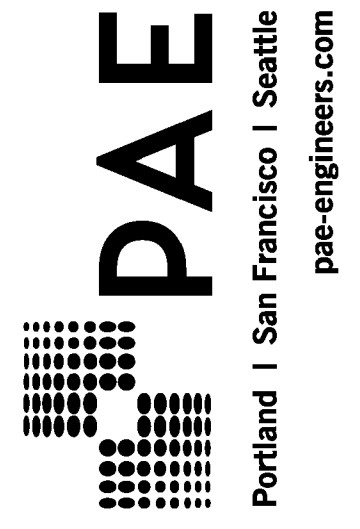
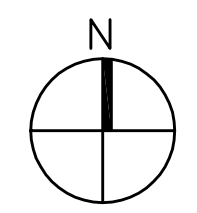
Date: 8/6/13 Time: 4:56pm File: P:\2012\12-1634.00 - PSU Center for Student Health_Counseling\01 Drawings\CAD\12-1634 P12.dwg User: dany.rachi



- GENERAL NOTES:**
1. THE CONTRACTOR SHALL VERIFY ALL DIMENSIONS AND EXISTING CONDITIONS IN THE FIELD PRIOR TO THE START OF WORK.
 2. THE PLANS ARE DIAGRAMMATIC AND SHOW GENERALLY THE LOCATIONS OF THE FIXTURES, EQUIPMENT, DUCTWORK, PIPE LINES, ETC., AND ARE NOT TO BE SCALED.
 3. PATCH AND REPAIR ALL OPENINGS MADE BY REMOVALS.
 4. PROVIDE RATED FIRESTOPPING AT ALL PENETRATIONS THROUGH RATED ENCLOSURES, RATED SHAFTS, FLOOR/CEILING ASSEMBLIES AND ROOF/CEILING ASSEMBLIES

- NOTES:**
- ① CHAIR UTILITIES ①: 1/2\" CW, 1/2\" DA, & 1/2\" DV TO BE REMOVED TO ACCOMMODATE CHAIR RELOCATION. PATCH SLAB WHERE PIPING IS REMOVED. NEW PIPING TO BE EXTENDED TO NEW CHAIR LOCATION.
 - ② REMOVE WASTE PIPING FROM FLOOR. PATCH AND REPAIR SLAB AFTER PIPE REMOVAL.

1 SECOND FLOOR DEMOLITION PLAN - PLUMBING
P1.1 1/8" = 1'-0"



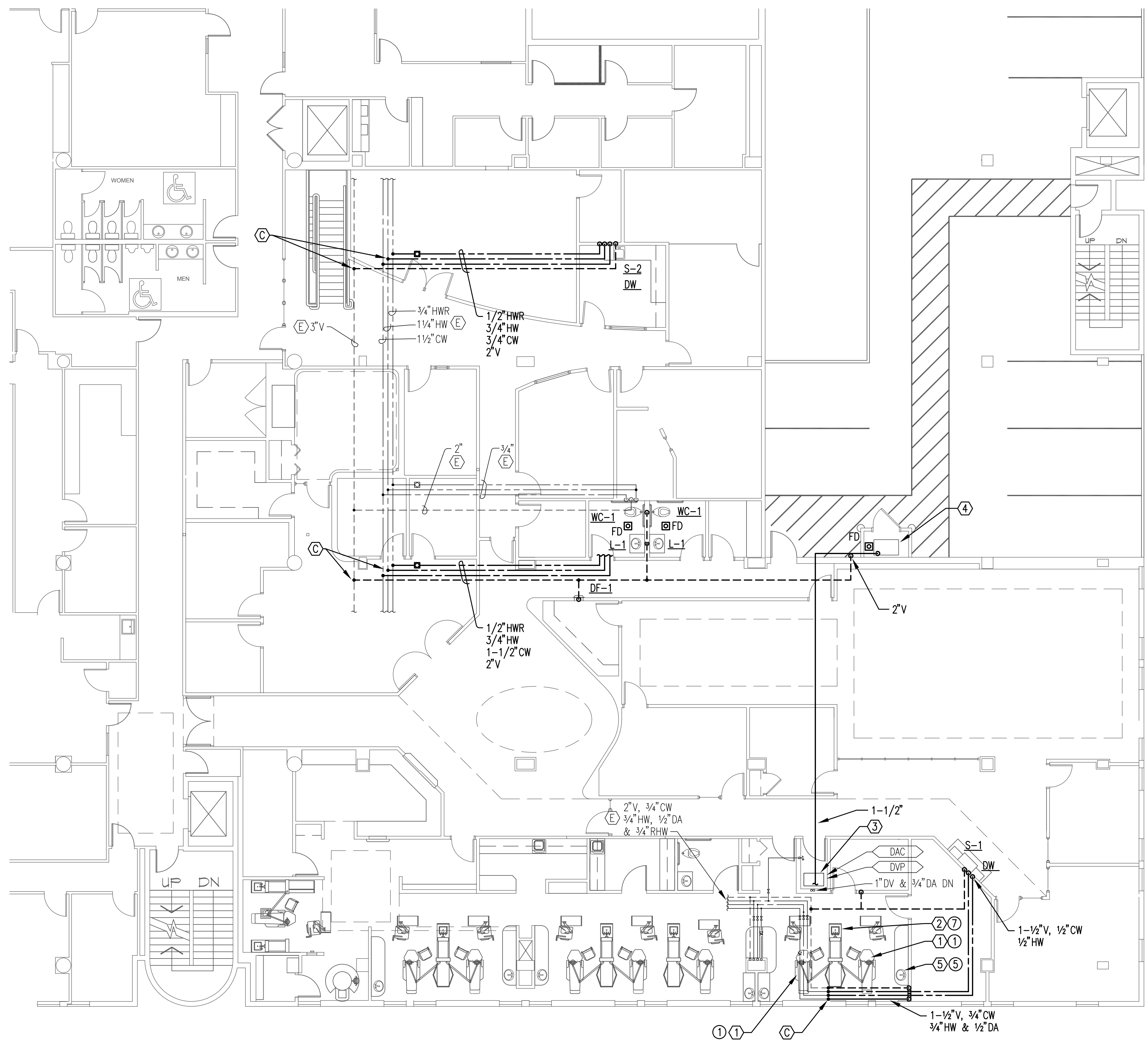
PSU STUDENT HEALTH & COUNSELING CENTER

1880 SW 6th AVENUE, PORTLAND, OREGON 97201
 OWNER: PORTLAND STATE UNIVERSITY - FACILITIES AND PLANNING (FAP)
 202 UNIVERSITY SERVICES BLDG - 617 SW MONTGOMERY
 PORTLAND, OREGON 97201
 CONTACT: KAY BYRNE 503-725-9837

PROJECT NO.	ISSUE DATE
12-1121	07.31.2013
REVISIONS	

SHEET
 2ND FLOOR DEMO
 PLANS - PLUMBING
P1.2
 PERMIT SET
© MERRYMAN BARNES ARCHITECTS, INC.

Date: 8/6/13 Time: 4:55pm File: P:\2012\12-1634.00 - PSU Center for Student Health_Counseling\01 Drawings\CAD\12-1634 P21.dwg User: dany.rachi



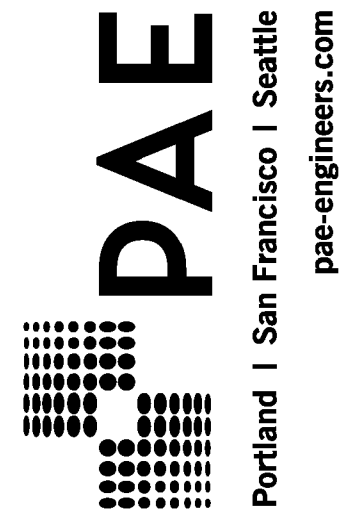
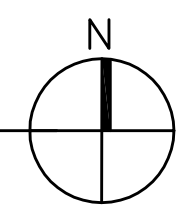
GENERAL NOTES:

1. THE CONTRACTOR SHALL VERIFY ALL DIMENSIONS AND EXISTING CONDITIONS IN THE FIELD PRIOR TO THE START OF WORK.
2. THE PLANS ARE DIAGRAMMATIC AND SHOW GENERALLY THE LOCATIONS OF THE FIXTURES, EQUIPMENT, DUCTWORK, PIPE LINES, ETC., AND ARE NOT TO BE SCALED.
3. PATCH AND REPAIR ALL OPENINGS MADE BY REMOVALS.
4. PROVIDE RATED FIRESTOPPING AT ALL PENETRATIONS THROUGH RATED ENCLOSURES, RATED SHAFTS, FLOOR/CEILING ASSEMBLIES AND ROOF/CEILING ASSEMBLIES

NOTES:

- ① CHAIR UTILITIES ①: 1/2" CW, 1/2" DA, & 1/2" DV
- ② CENTRAL CABINET W/SINK ②: 2" W, 2" V, 1/2" H&CW, & 1/2" DA SEE DETAIL 1/P5.1
- ③ AIR COMPRESSOR TO BE RELOCATED. EXTEND 1-1/2" AIR LINE TO NEW COMPRESSOR LOCATION. CAP EXISTING INTAKE AIR LINE INSIDE EQUIPMENT ROOM.
- ④ NEW AIR COMPRESSOR LOCATION.
- ⑤ SIDE CABINET WITH SINK ⑤: 2" W, 1-1/2" V, 1/2" H&CW, & 1/2" DA

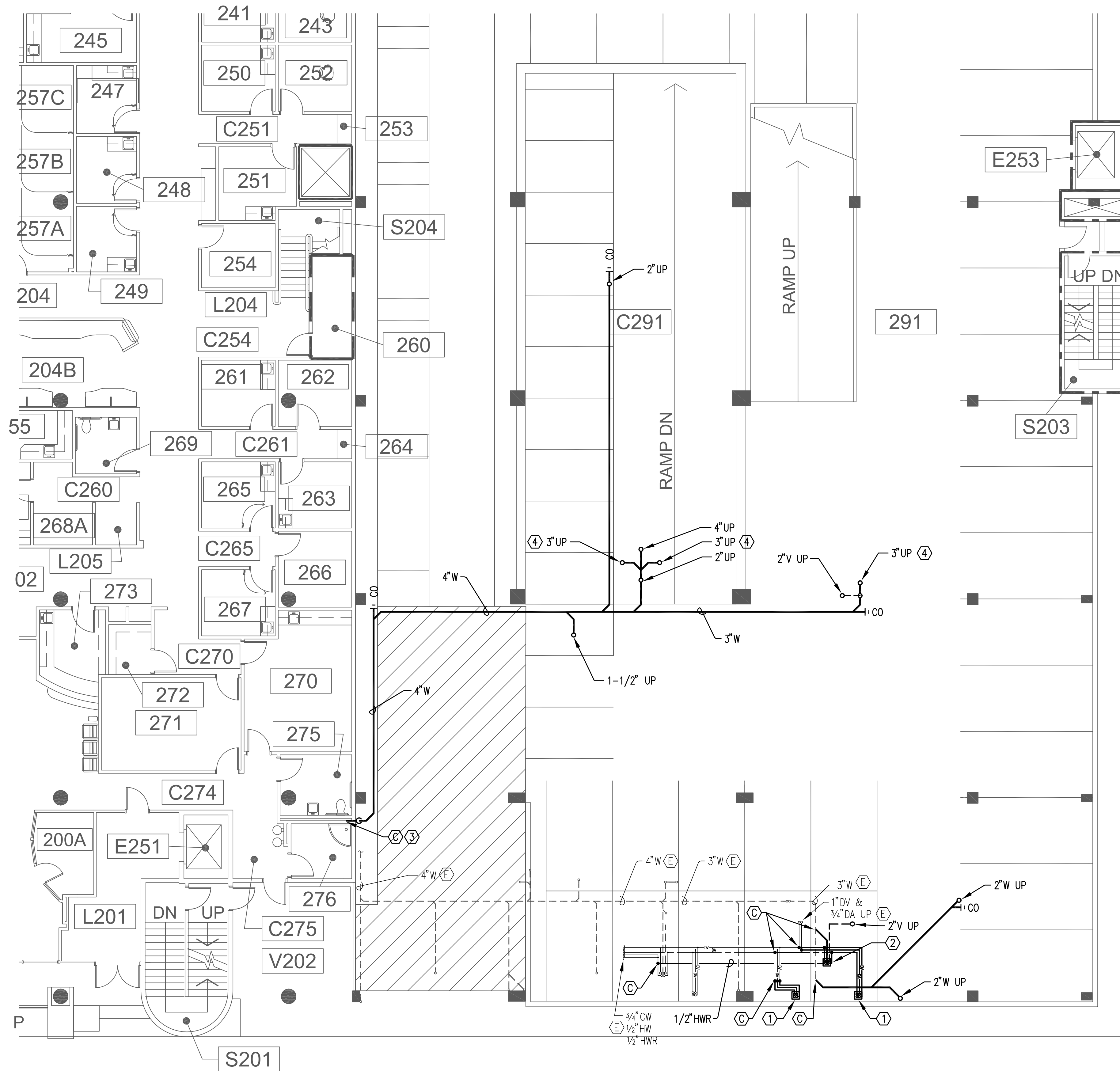
1
M2.1
THIRD FLOOR PLAN - PLUMBING
1/8" = 1'-0"



PSU STUDENT HEALTH & COUNSELING CENTER
1880 SW 6th AVENUE, PORTLAND, OREGON 97201
OWNER: PORTLAND STATE UNIVERSITY - FACILITIES AND PLANNING (FAP)
202 UNIVERSITY SERVICES BLDG - 617 SW MONTGOMERY
PORTLAND, OREGON 97201
CONTACT: KAY BYRNE 503-725-9837

PROJECT NO.	ISSUE DATE
12-1121	07.31.2013
REVISIONS	

SHEET
**3RD FLOOR
PLAN - PLUMBING**
P2.1
PERMIT SET
© MERRYMAN BARNES ARCHITECTS, INC.



- GENERAL NOTES:**
1. THE CONTRACTOR SHALL VERIFY ALL DIMENSIONS AND EXISTING CONDITIONS IN THE FIELD PRIOR TO THE START OF WORK.
 2. THE PLANS ARE DIAGRAMMATIC AND SHOW GENERALLY THE LOCATIONS OF THE FIXTURES, EQUIPMENT, DUCTWORK, PIPE LINES, ETC., AND ARE NOT TO BE SCALED.
 3. PATCH AND REPAIR ALL OPENINGS MADE BY REMOVALS.
 4. PROVIDE RATED FIRESTOPPING AT ALL PENETRATIONS THROUGH RATED ENCLOSURES, RATED SHAFTS, FLOOR/CEILING ASSEMBLIES AND ROOF/CEILING ASSEMBLIES

- NOTES:**
- ① CHAIR UTILITIES ①: 1/2" CW, 1/2" DA, & 1/2" DV UP
 - ② SIDE CABINET W/SINK ②: 2" W, 2" V, 1/2" H&CW, & 1/2" DA UP.
 - ③ CONNECT TO 4" WASTE STACK IN CHASE.
 - ④ PROVIDE TRAP PRIMER FOR ALL FLOOR DRAINS.

1 SECOND FLOOR PLAN - PLUMBING
P1.1 1/8" = 1'-0"



PSU STUDENT HEALTH & COUNSELING CENTER

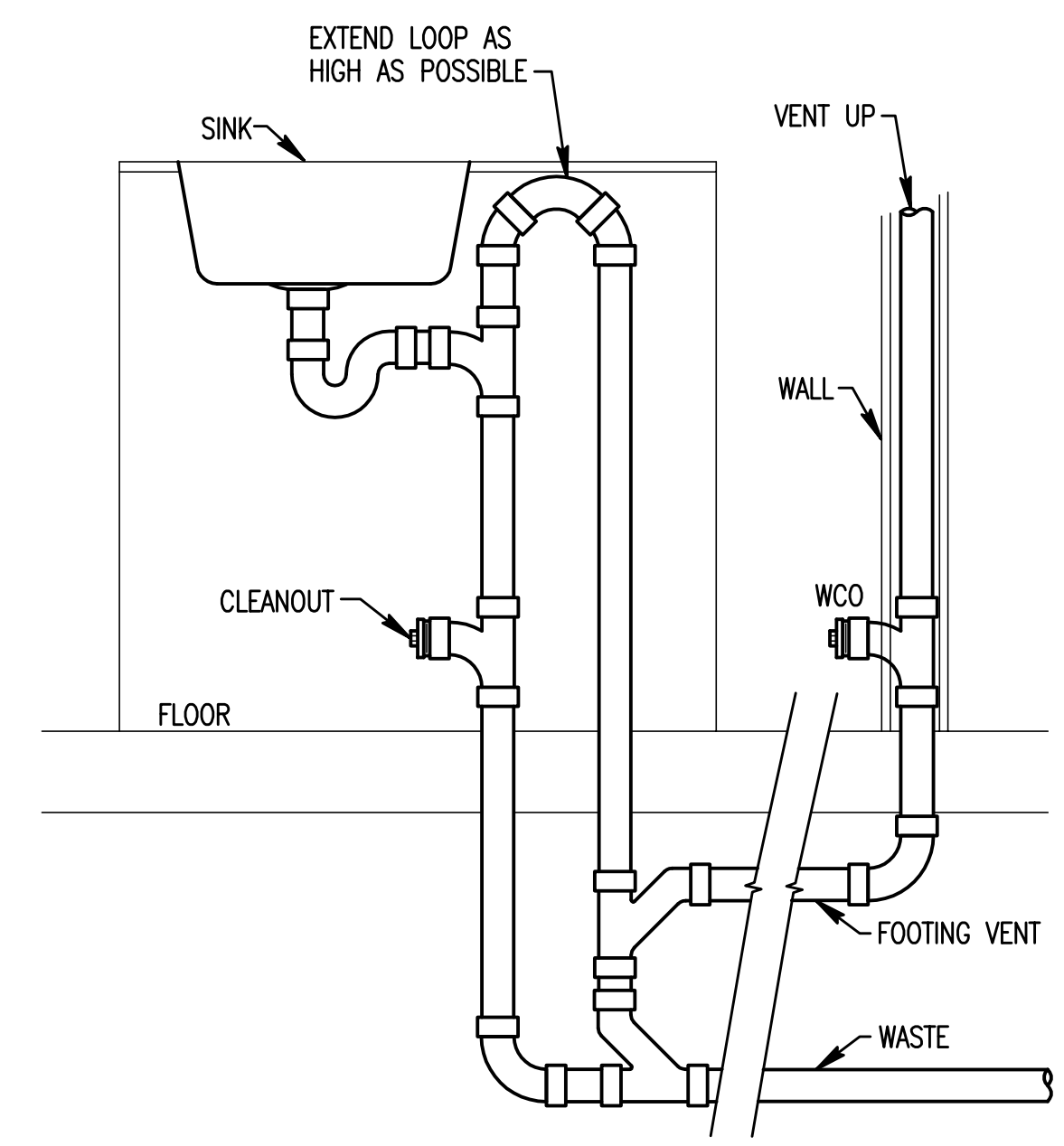
1880 SW 6th AVENUE, PORTLAND, OREGON 97201
 OWNER: PORTLAND STATE UNIVERSITY - FACILITIES AND PLANNING (FAP)
 202 UNIVERSITY SERVICES BLDG - 617 SW MONTGOMERY
 PORTLAND, OREGON 97201
 CONTACT: KAY BYRNE 503-725-9837

PROJECT NO.	ISSUE DATE
12-1121	07.31.2013
REVISIONS	

SHEET
 2ND FLOOR
 PLAN - PLUMBING
P2.2
 PERMIT SET
 © MERRYMAN BARNES ARCHITECTS, INC.

Date: 8/6/13 Time: 4:55pm File: P:\2012\12-1634\00 - PSU Center for Student Health_Counseling\01 Drawings\CAD\12-1634_P22.dwg User: danyiraohi

Date: 8/16/13 Time: 4:55pm File: P:\2012\12-1634.00 - PSU Center for Student Health_Counseling\01 Drawings\CAD\12-1634 P5.1.dwg User: danyrachi

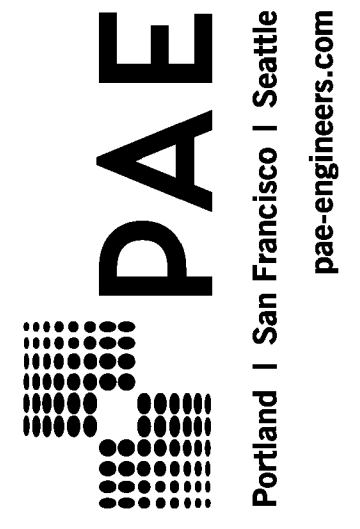


1 ISLAND SINK PIPING DETAIL
 P5.1 SCALE: NONE



PSU STUDENT HEALTH & COUNSELING CENTER

1880 SW 6th AVENUE - PORTLAND, OREGON 97201
 OWNER: PORTLAND STATE UNIVERSITY - FACILITIES AND PLANNING (FAP)
 202 UNIVERSITY SERVICES BLDG - 617 SW MONTGOMERY
 PORTLAND, OREGON 97201
 CONTACT: KAY BYRNE 503-725-9837



PROJECT NO.	ISSUE DATE
12-1121	07.31.2013
REVISIONS	

SHEET
 DETAILS
 PLUMBING
P5.1
 PERMIT SET
 © MERRYMAN BARNES ARCHITECTS, INC.