

GENERAL NOTES

1. ALL WORK SHALL COMPLY WITH LOCAL CODES, OREGON STATE CODES, AMENDMENTS, RULES, REGULATIONS, ORDINANCES, LAWS, ORDERS, APPROVALS, ETC. THAT ARE REQUIRED BY GOVERNING AUTHORITIES. IN THE EVENT OF CONFLICT, THE MOST STRINGENT REQUIREMENTS SHALL APPLY. REQUIREMENTS INCLUDE BUT ARE NOT LIMITED TO THE CURRENTLY APPLICABLE EDITIONS OR PUBLICATIONS OF THE FOLLOWING:

1. STATE OF OREGON 2010 ED. STRUCTURAL SPECIALTY CODE
2. OREGON ADMINISTRATIVE CODE
3. NATIONAL FIRE PROTECTION ASSOCIATION
4. STATE OF OREGON 2011 ED. ELECTRICAL SPECIALTY CODE
5. STATE OF OREGON 2011 ED. PLUMBING SPECIALTY CODE
6. STATE OF OREGON 2010 ED. MECHANICAL SPECIALTY CODE
7. OREGON FIRE CODE 2010 ED.

2. CONTRACTOR SHALL EXAMINE AND VERIFY CONDITIONS OF THE JOB SITE. ANY DISCREPANCY BETWEEN DRAWINGS AND EXISTING CONDITIONS SHOULD BE RECORDED IN WRITING AND REPORTED TO THE ARCHITECT FOR RESOLUTION PRIOR TO COMMENCEMENT OF WORK.

3. DIMENSIONS RELATED TO EXISTING CONDITIONS ARE APPROXIMATE. VERIFY ALL DIMENSIONS PRIOR TO BIDDING AND INSTALLATION OF ANY ROOFING OR FLASHING.

4. ROOF PENETRATION SIZES NOTED IN THE DRAWINGS ARE APPROXIMATE AND MUST BE VERIFIED PRIOR TO RE-ROOFING.

5. FALL PROTECTION TO BE BY CONTRACTOR.

6. ALL BUILDING MATERIALS ARE TO BE STORED APPROPRIATELY AND PROTECTED FROM DAMAGE.

7. DO NOT SCALE DRAWINGS.

8. G.C. RESPONSIBLE FOR PROTECTION OF SURROUNDING SIDEWALKS AND VEGETATION FROM CONSTRUCTION TRAFFIC. PLYWOOD COVERING OF SIDEWALK REQUIRED. TREE ROOT ZONES TO BE PROTECTED WITH CYCLONE FENCING AND GROUND STAKES.

ROOF AREA NOTES

1. AREAS S AND T (BASE BID):

REMOVE AND DISPOSE OF EXISTING ADHERED EPDM ROOFING, FLASHING, AND 1-1/2" BOARD INSULATION DOWN TO EXISTING WOOD DECK. INSTALL NEW BOARD INSULATION (2 LAYERS OF 2" POLYISO, 4" TOTAL DEPTH). EXTEND CURB AND PLUMBING PENETRATION HEIGHTS AS NECESSARY FOR NEW INSULATION DEPTH. INSTALL NEW COVER BOARD. INSTALL FULLY ADHERED, 80 MIL SINGLE PLY PVC ROOF SYSTEM AND SHEET METAL FLASHING AS INDICATED. PATCH AND REPAIR EXISTING FLASHING AS INDICATED.

2. ALL OTHER AREAS NOT IN CONTRACT.

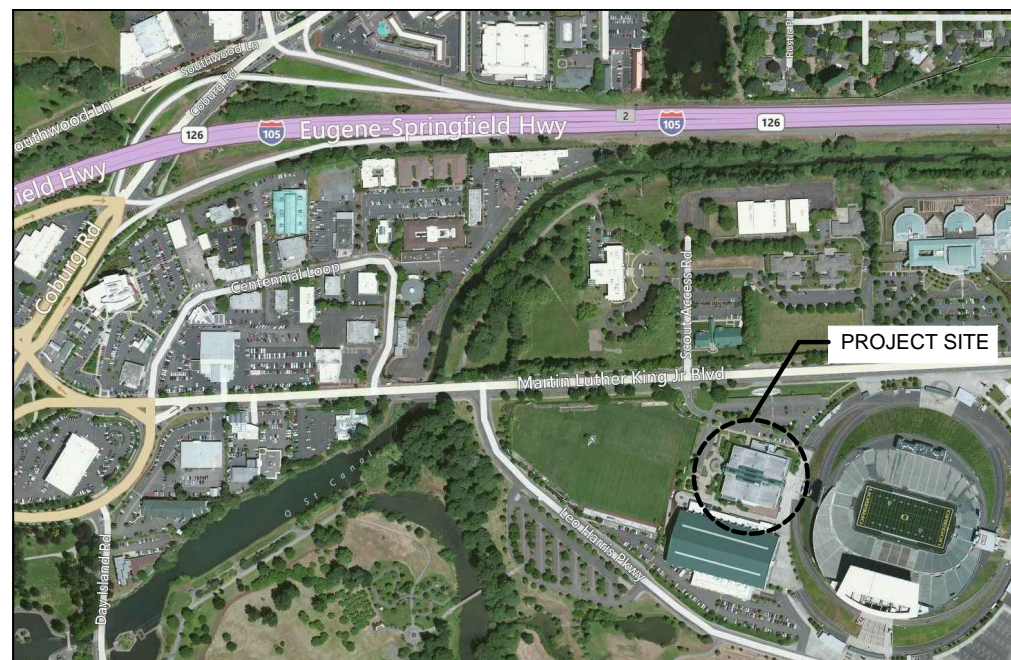
SCHEDULE NOTES

1. PROJECT TO ACHIEVE SUBSTANTIAL COMPLETION BY SEPTEMBER 13TH, 2013.

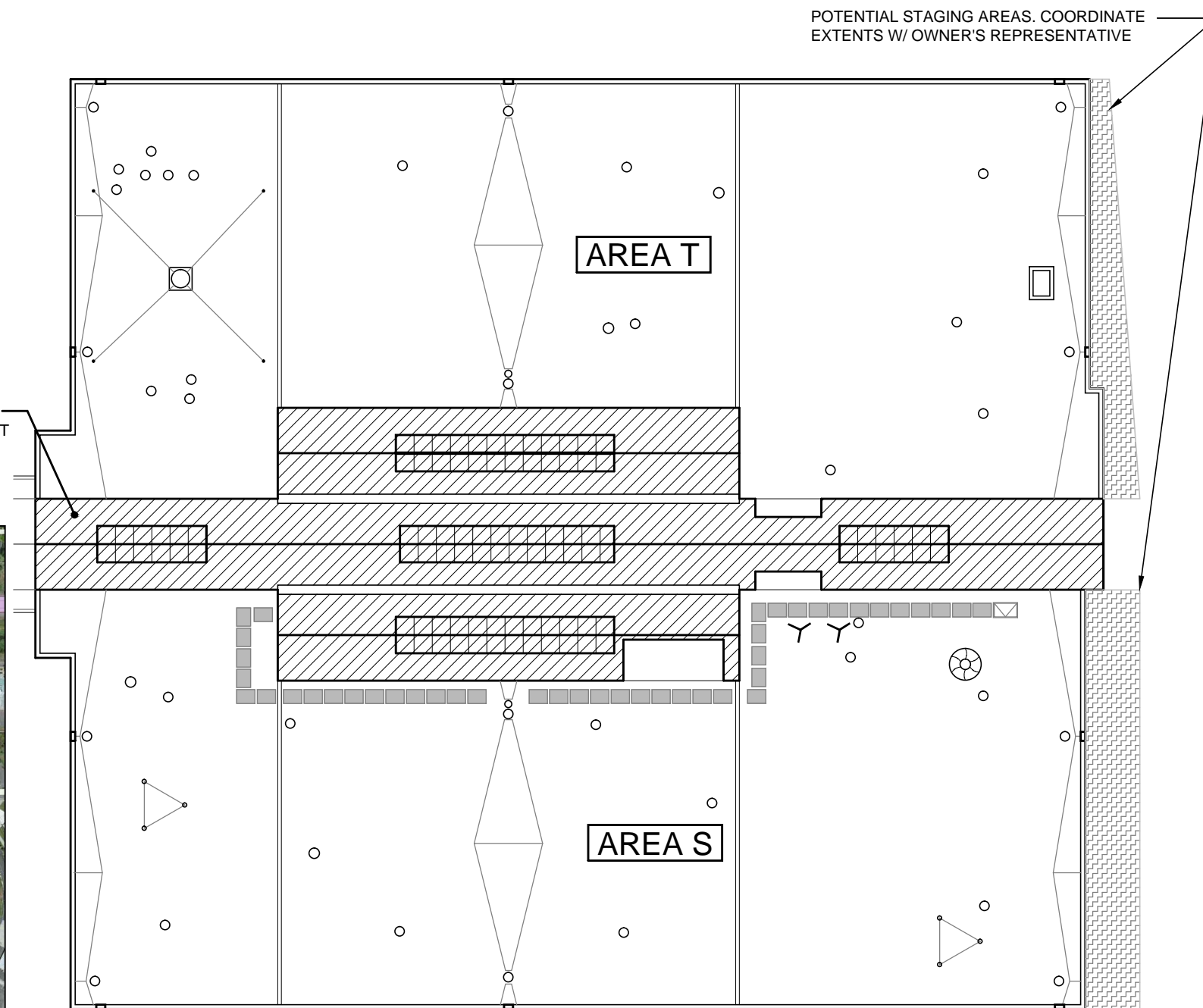
2. DUE TO HOME GAMES ON THE FOLLOWING SATURDAYS, ASSUME CONSTRUCTION ACTIVITIES ARE TO BE LIMITED ON FRIDAY, AUGUST 30TH AND FRIDAY, SEPTEMBER 13TH. COORDINATE ANY ACTIVITIES ON THESE DAYS WITH OWNER'S REPRESENTATIVE.

POTENTIAL STAGING AREAS. COORDINATE EXTENTS W/ OWNER'S REPRESENTATIVE

HATCHED AREAS NOT IN CONTRACT



2 PROJECT LOCATION MAP
Scale: NTS



1 ROOF AREA PLAN
Scale: 1"=32'-0"



PROJECT #: 1222
DRAWN BY: CA / TB
CHECKED BY: JR
FILE NAME: 1222-CURRENT
DATE: 07/08/2013

PROJECT:

**UO CASANOVA CENTER
ROOF REPLACEMENT**

**Rowell Brokaw
Architects**

Rowell Brokaw Architects, P.C.
One East Broadway, Suite 300
Eugene, Oregon 97401
Voice (541) 485-1003
Fax (541) 485-7344
www.rowellbrokaw.com

A1

1 OF 18

SYMBOLS LEGEND

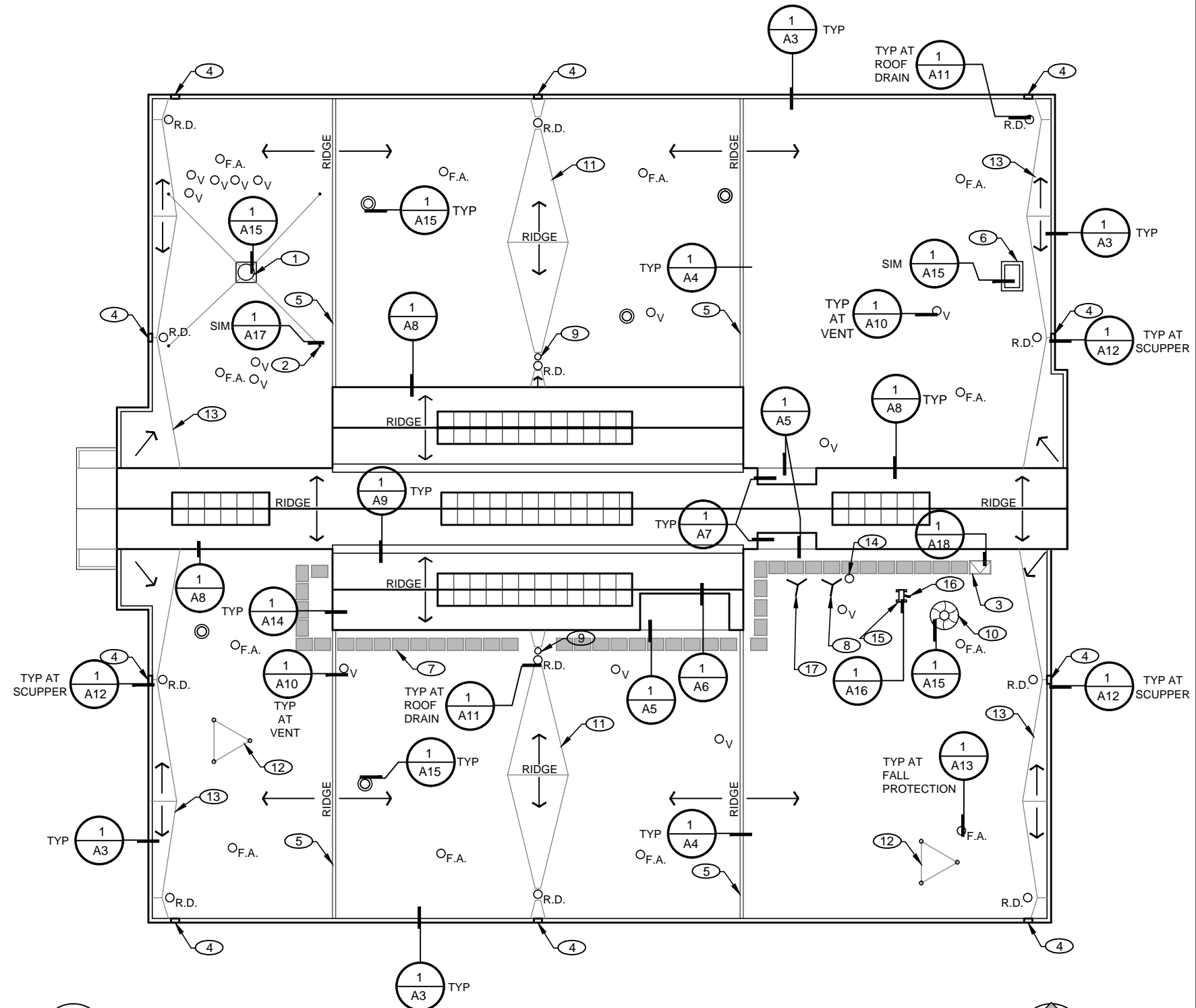
- ⊙ (E) MECHANICAL PENETRATION
- _{R.D.} ROOF DRAIN
- _V ROOF VENT
- _{F.A.} FALL PROTECTION ANCHOR
GUARDIAN CB OR APPROVED EQUAL

KEYNOTES

- ① (E) FLUE
- ② (E) GUY WIRE TIE -DOWN, TYP. OF 4
- ③ (E) ROOF HATCH
- ④ (E) OVERFLOW TO SCUPPER
- ⑤ (E) ROOF AREA DIVIDER
- ⑥ (E) HVAC UNIT. REMOVE & STORE FOR REROOF & REINSTALL. COORDINATE SHUT DOWN OF UNIT WITH BUILDING OWNER.
- ⑦ (N) ADHERED WALK PADS
- ⑧ REMOVE (E) LARGE SATELLITE DISH. PATCH PENETRATIONS AS RQD FOR (N) ROOFING. WALL MTD DIRECT TV DISHES TO REMAIN.
- ⑨ (E) OVERFLOW DRAIN. FLASH SIM. TO ROOF DRAIN
- ⑩ (E) MECHANICAL PENETRATION
- ⑪ (E) WOOD FRAMED CRICKET TO REMAIN
- ⑫ (E) TRIPOD TO BE DEMOLISHED.
- ⑬ (N) TAPERED CRICKETS @ PARAPET WALLS, TYP
- ⑭ (E) ROOF PENETRATION FOR SATELLITE CABLING. FLASH PENETRATION SIM TO DETAIL 1/A10.
- ⑮ (E) MINI SPLIT HVAC UNIT. COORDINATE SHUTDOWN WITH OWNER. MAX. 4-HOUR SHUTDOWN.
- ⑯ (E) ELECTRIC AND HYDRONIC LINES TO HVAC UNIT. SEPARATE AND FLASH SIM. TO DETAIL 1/A10.
- ⑰ (E) SATELLITE DISH TO REMAIN. INSTALL (N) CLAD METAL PITCH POCKETS AT FEET SIM TO DETAIL 1/A17.

GENERAL NOTE

- 1. SALVAGE (E) LOOSE RUBBER WALKPADS TO OWNER



1
A2 ROOF PLAN
Scale: 1" = 32'-0"



PROJECT #: 1222
DRAWN BY: CA / TB
CHECKED BY: JR
FILE NAME: 1222-CURRENT
DATE: 07/08/2013

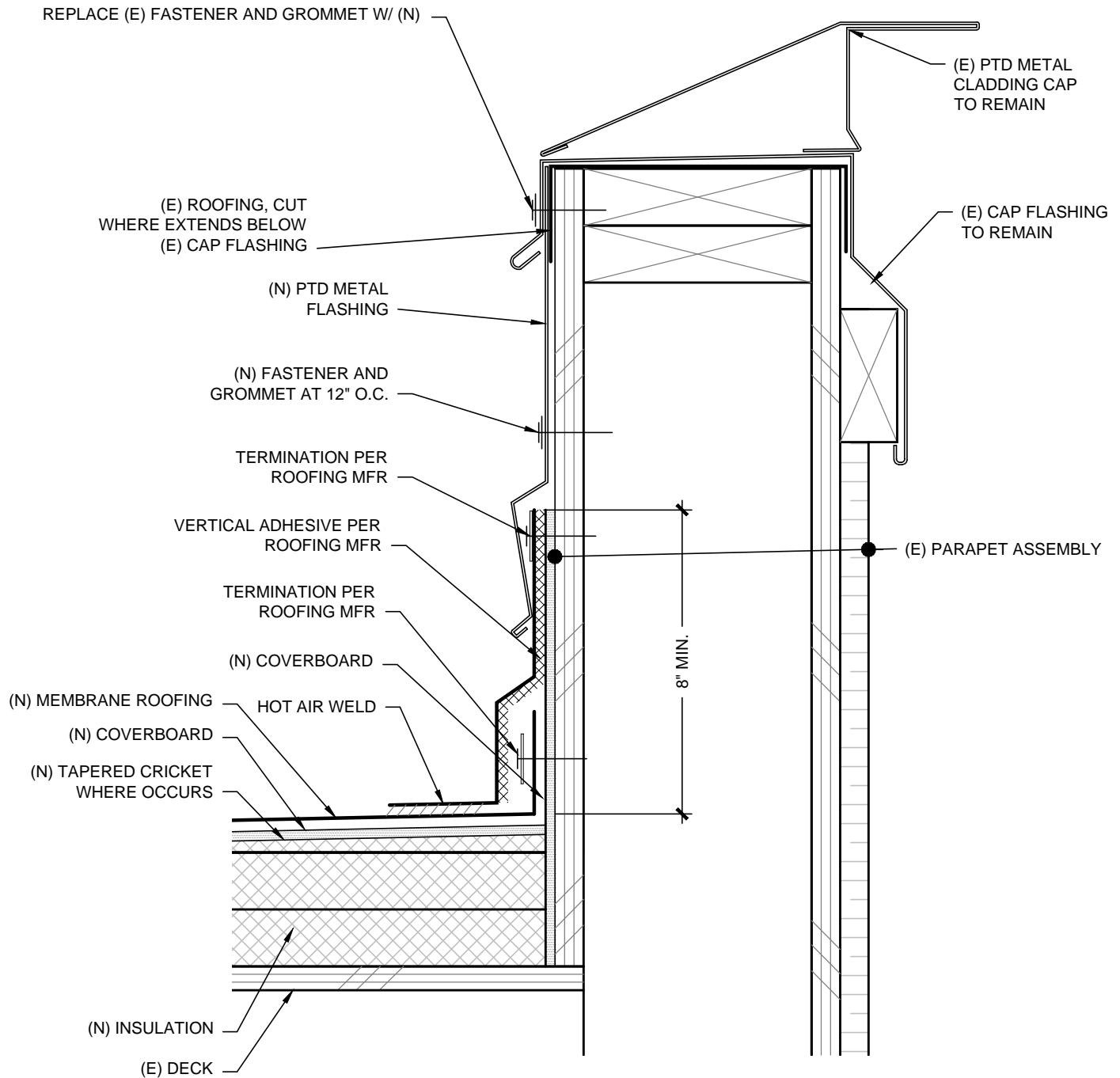
PROJECT:

UO CASANOVA CENTER ROOF REPLACEMENT

Rowell Brokaw
Architects

Rowell Brokaw Architects, P.C.
One East Broadway, Suite 300
Eugene, Oregon 97401
Voice (541) 485-1003
Fax (541) 485-7344
www.rowellbrokaw.com

A2



1 PARAPET DETAIL
 A3 Scale: 3"=1'-0"

Rowell Brokaw Architects

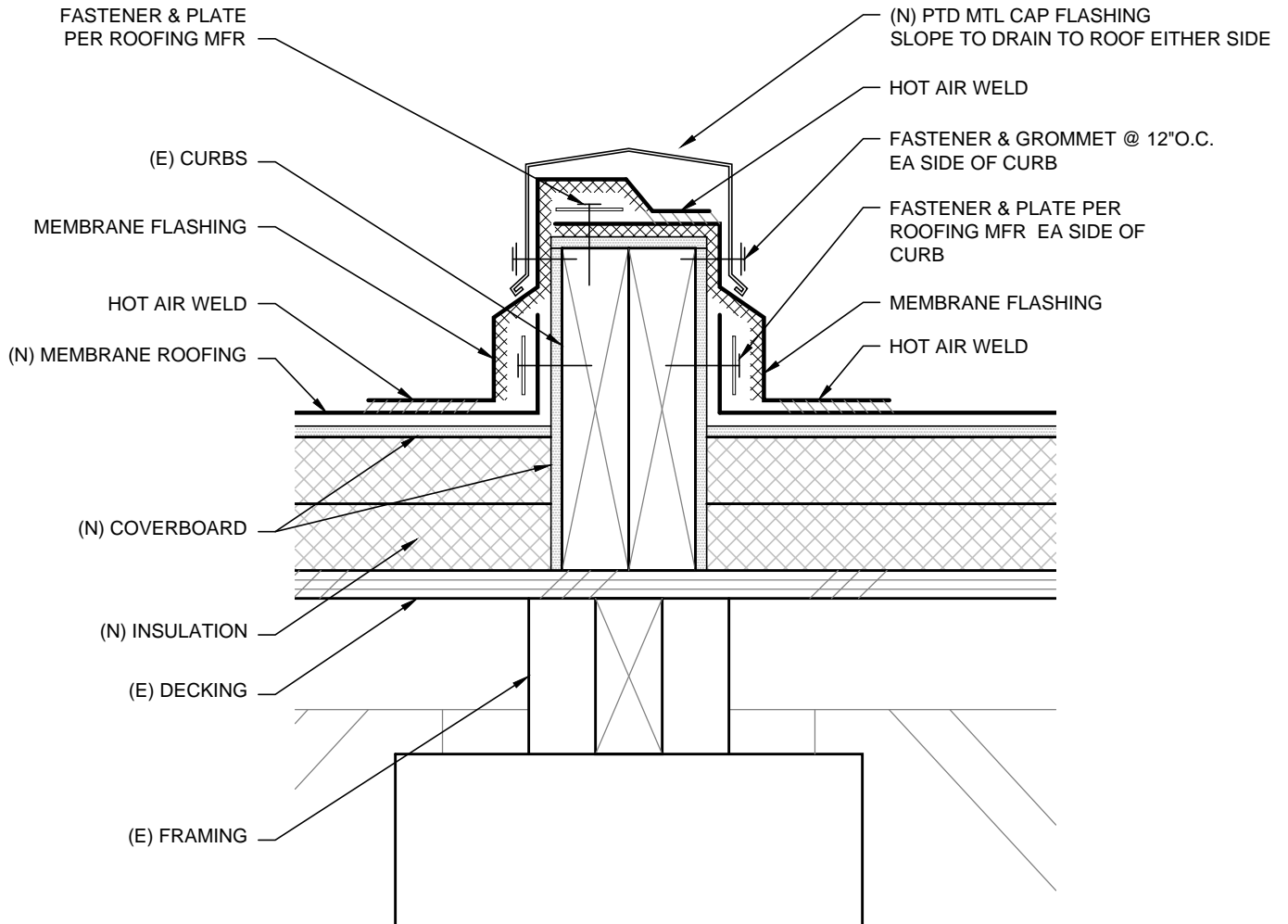
Rowell Brokaw Architects, P.C.
 One East Broadway, Suite 300
 Eugene, Oregon 97401
 Voice (541) 485-1003
 Fax (541) 485-7344
 www.rowellbrokaw.com

SCALE: AS NOTED

PROJECT: UO CASANOVA CENTER ROOF REPLACEMENT
 PROJECT #: 1222
 DRAWN BY: CA/TB
 CHECKED BY: JR
 FILE NAME: 1222-CURRENT
 DATE: 07/08/2013



A3



1
A4

ROOF AREA DIVIDER DETAIL

Scale: 3"=1'-0"

Rowell Brokaw Architects

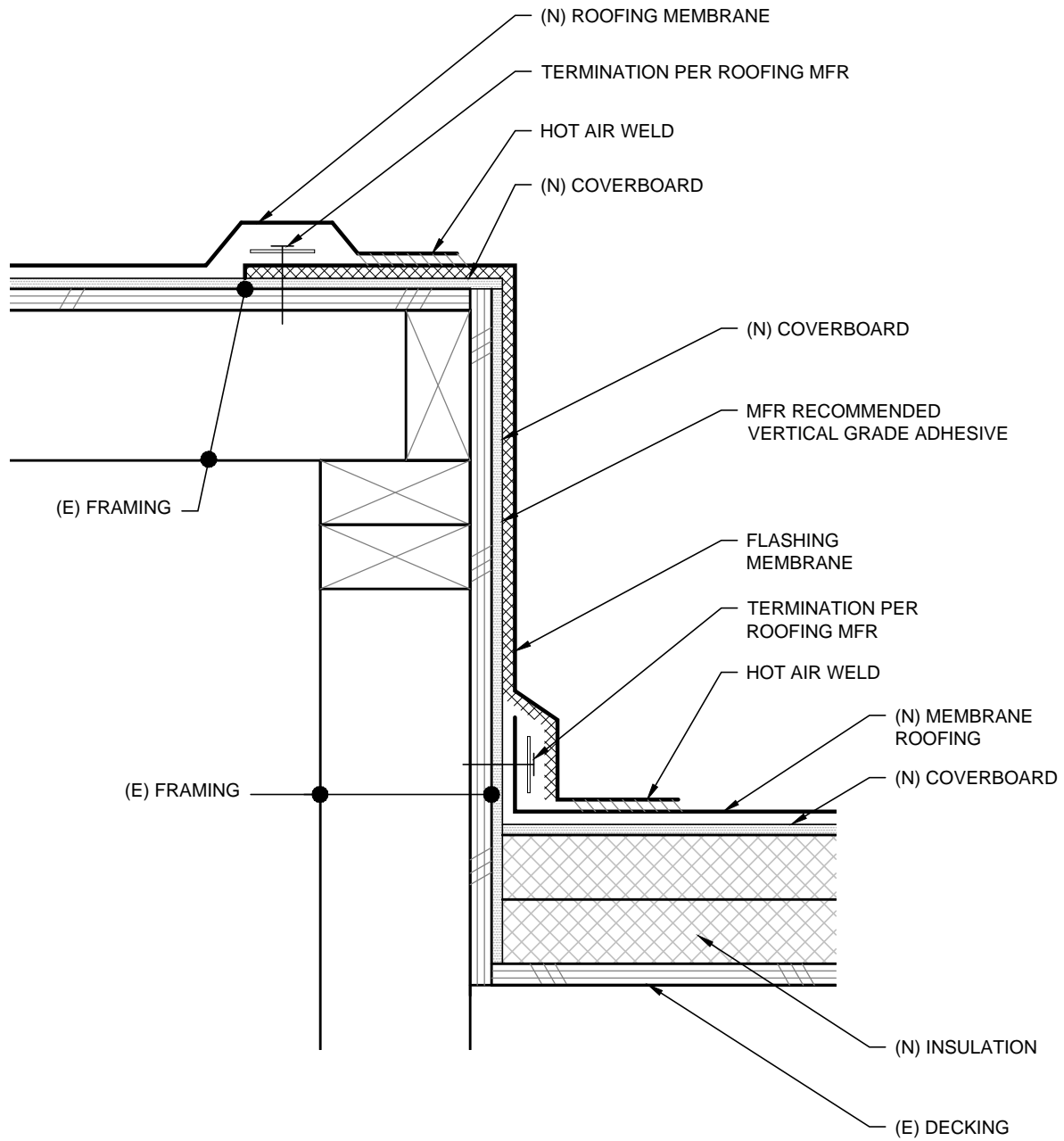
Rowell Brokaw Architects, P.C.
One East Broadway, Suite 300
Eugene, Oregon 97401
Voice (541) 485-1003
Fax (541) 485-7344
www.rowellbrokaw.com

SCALE: AS NOTED

PROJECT: UO CASANOVA CENTER ROOF REPLACEMENT
PROJECT #: 1222
DRAWN BY: CA/TB
CHECKED BY: JR
FILE NAME: 1222-CURRENT
DATE: 07/08/2013



A4



1
A5

DETAIL @ RAISED PLATFORM

Scale: 3"=1'-0"

Rowell Brokaw Architects

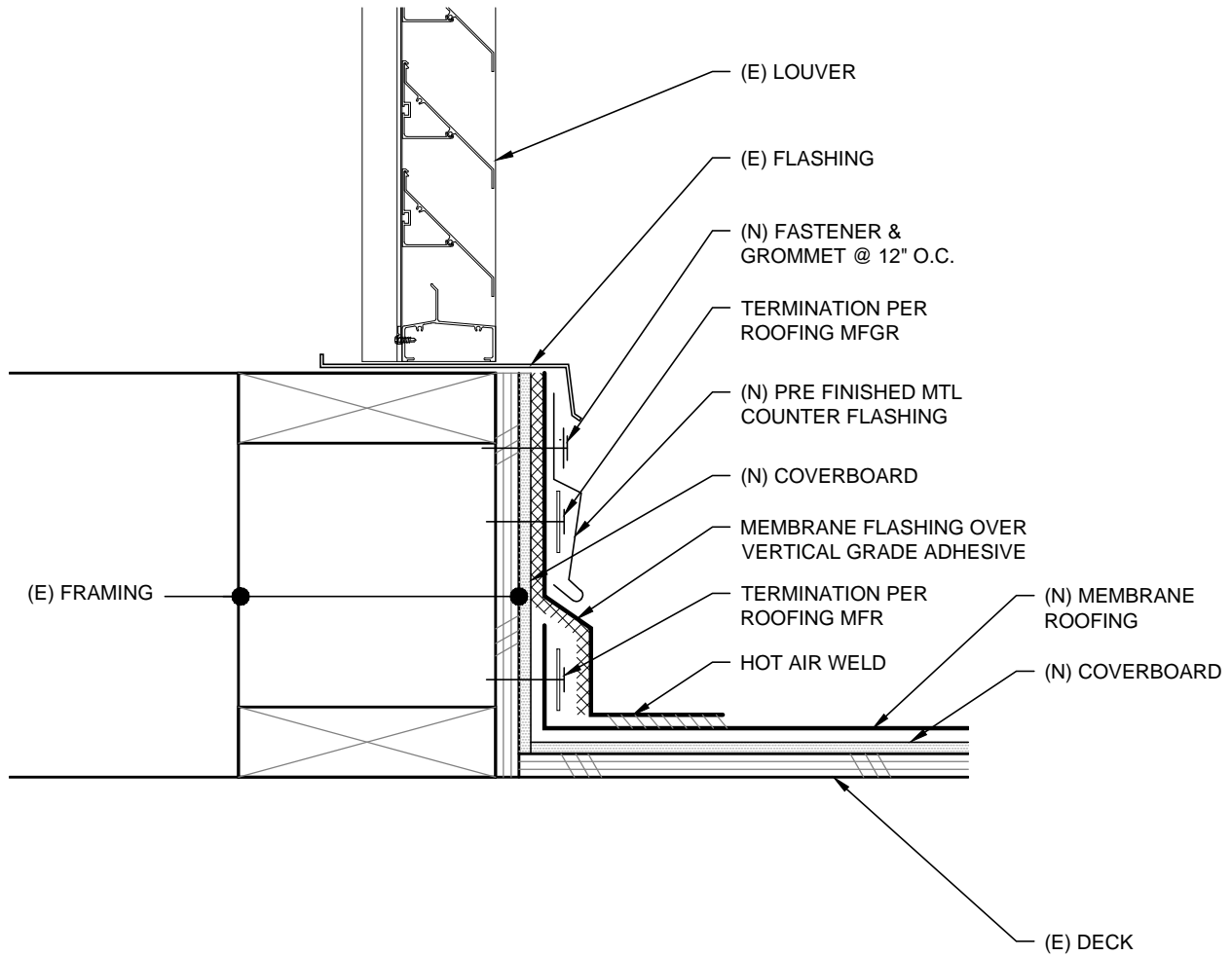
Rowell Brokaw Architects, P.C.
One East Broadway, Suite 300
Eugene, Oregon 97401
Voice (541) 485-1003
Fax (541) 485-7344
www.rowellbrokaw.com

SCALE: AS NOTED

PROJECT: UO CASANOVA CENTER ROOF REPLACEMENT
PROJECT #: 1222
DRAWN BY: CA/TB
CHECKED BY: JR
FILE NAME: 1222-CURRENT
DATE: 07/08/2013



A5



1
A6

DETAIL @ LOUVER
Scale: 3"=1'-0"

Rowell Brokaw Architects

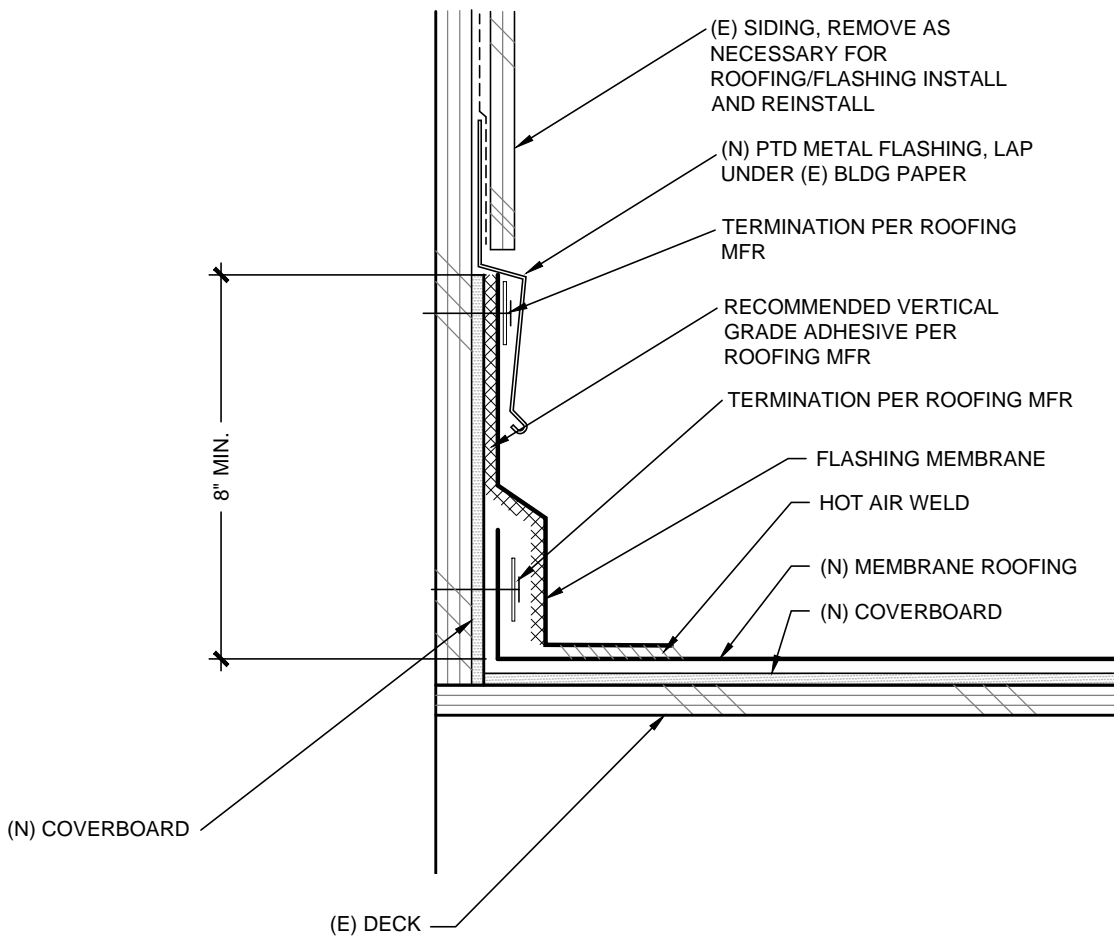
Rowell Brokaw Architects, P.C.
One East Broadway, Suite 300
Eugene, Oregon 97401
Voice (541) 485-1003
Fax (541) 485-7344
www.rowellbrokaw.com

SCALE: AS NOTED

PROJECT: UO CASANOVA CENTER ROOF REPLACEMENT
PROJECT #: 1222
DRAWN BY: CA/TB
CHECKED BY: JR
FILE NAME: 1222-CURRENT
DATE: 07/08/2013



A6



1
A7

DETAIL @ LOUVER SIDE WALL

Scale: 3"=1'-0"

Rowell Brokaw Architects



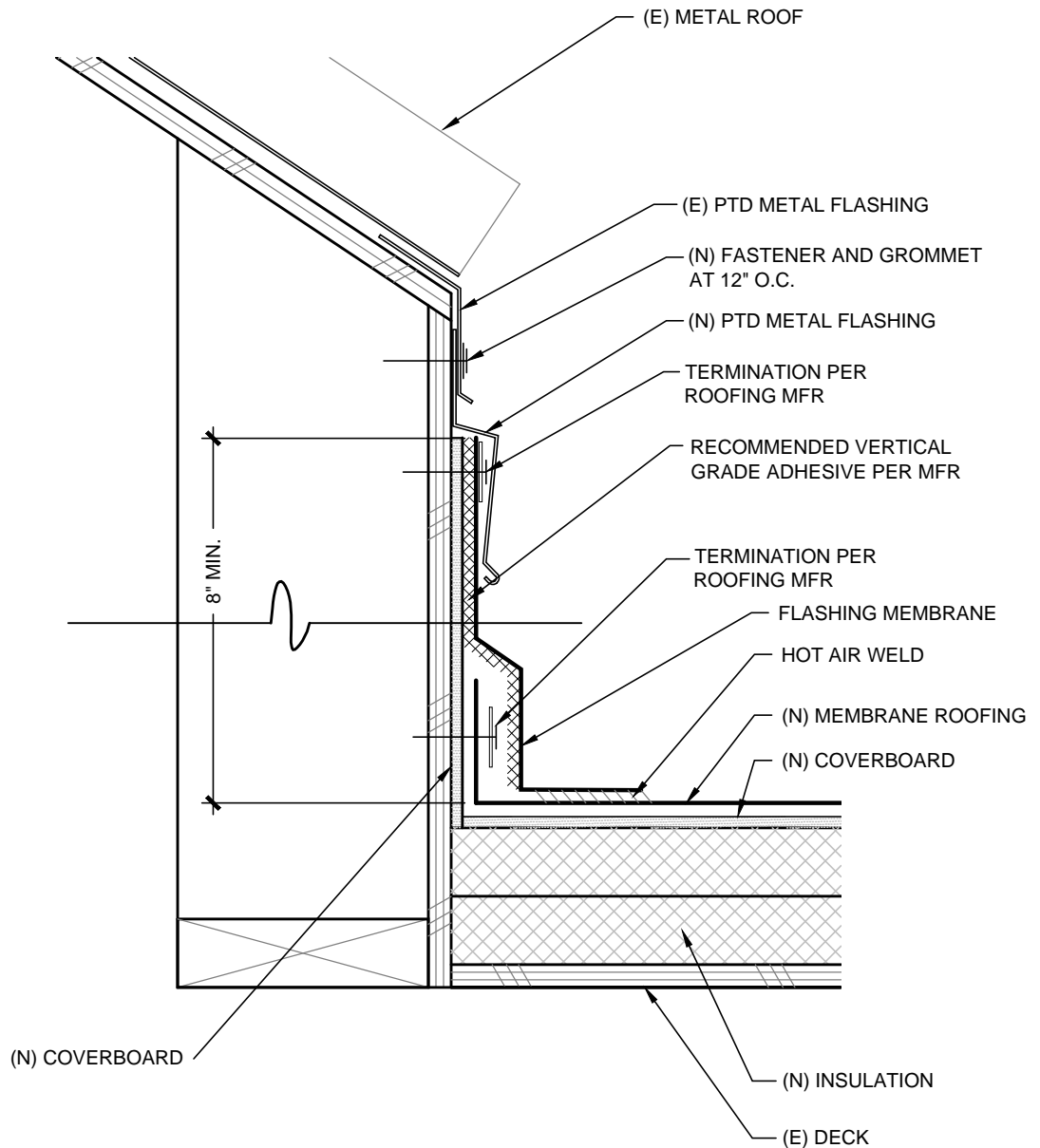
Rowell Brokaw Architects, P.C.
One East Broadway, Suite 300
Eugene, Oregon 97401
Voice (541) 485-1003
Fax (541) 485-7344
www.rowellbrokaw.com

SCALE: AS NOTED

PROJECT: UO CASANOVA CENTER ROOF REPLACEMENT
PROJECT #: 1222
DRAWN BY: CA/TB
CHECKED BY: JR
FILE NAME: 1222-CURRENT
DATE: 07/08/2013



A7



1
A8

DETAIL @ METAL ROOF EAVE

Scale: 3"=1'-0"

Rowell Brokaw Architects

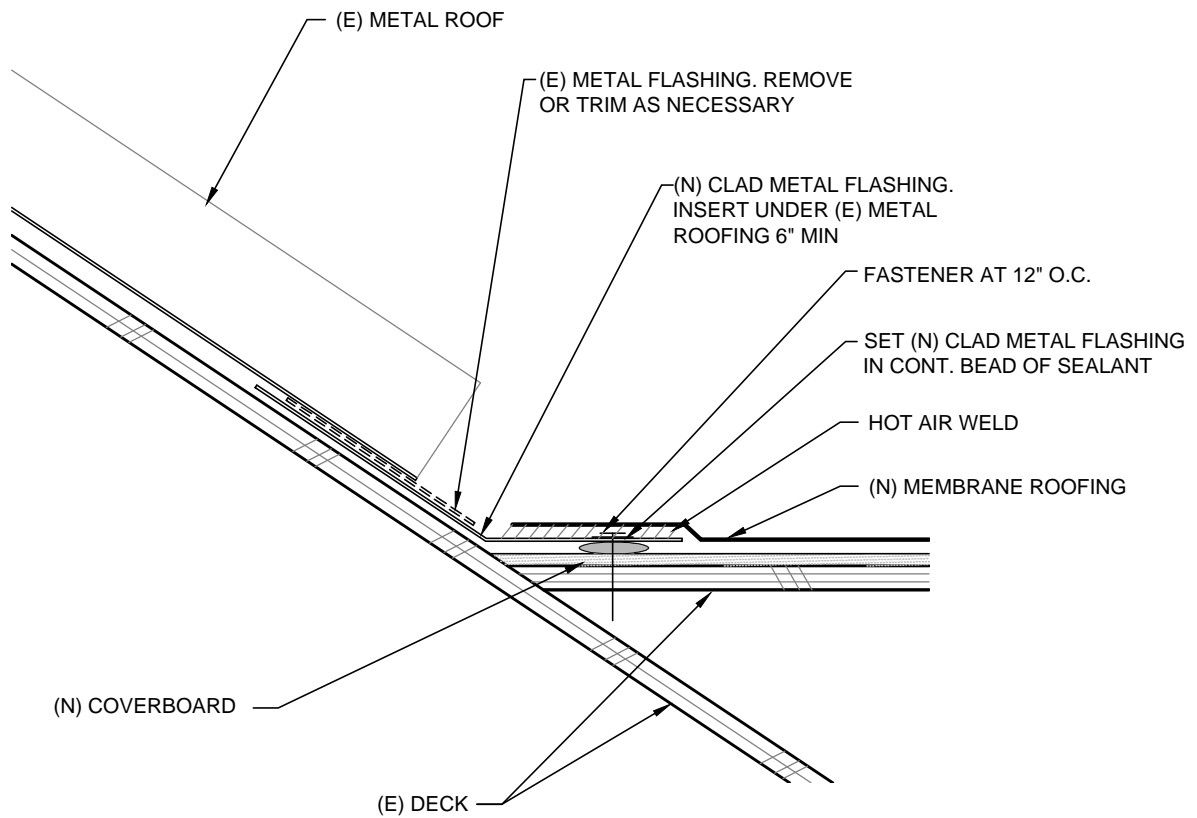
Rowell Brokaw Architects, P.C.
One East Broadway, Suite 300
Eugene, Oregon 97401
Voice (541) 485-1003
Fax (541) 485-7344
www.rowellbrokaw.com

SCALE: AS NOTED

PROJECT: UO CASANOVA CENTER ROOF REPLACEMENT
PROJECT #: 1222
DRAWN BY: CA/TB
CHECKED BY: JR
FILE NAME: 1222-CURRENT
DATE: 07/08/2013



A8



1
A9

DETAIL @ METAL ROOF VALLEY

Scale: 3"=1'-0"

Rowell Brokaw Architects



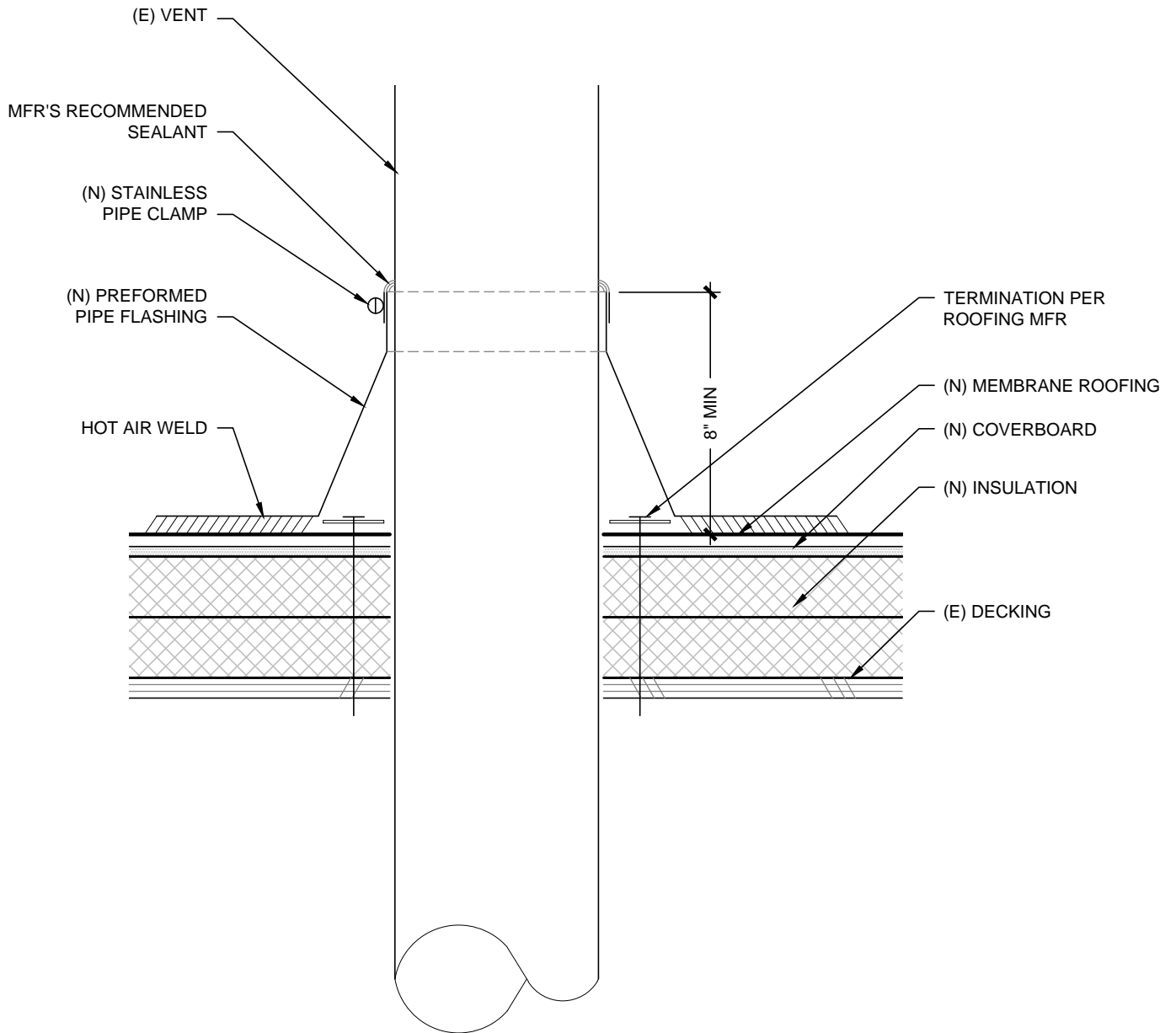
Rowell Brokaw Architects, P.C.
One East Broadway, Suite 300
Eugene, Oregon 97401
Voice (541) 485-1003
Fax (541) 485-7344
www.rowellbrokaw.com

SCALE: AS NOTED

PROJECT: UO CASANOVA CENTER ROOF REPLACEMENT
PROJECT #: 1222
DRAWN BY: CA/TB
CHECKED BY: JR
FILE NAME: 1222-CURRENT
DATE: 07/08/2013



A9



1
A10
DETAIL @ ROOF VENT
 Scale: 3"=1'-0"

Rowell Brokaw Architects

Rowell Brokaw Architects, P.C.
 One East Broadway, Suite 300
 Eugene, Oregon 97401
 Voice (541) 485-1003
 Fax (541) 485-7344
 www.rowellbrokaw.com

SCALE: AS NOTED

PROJECT: UO CASANOVA CENTER ROOF REPLACEMENT
 PROJECT #: 1222
 DRAWN BY: CA/TB
 CHECKED BY: JR
 FILE NAME: 1222-CURRENT
 DATE: 07/08/2013



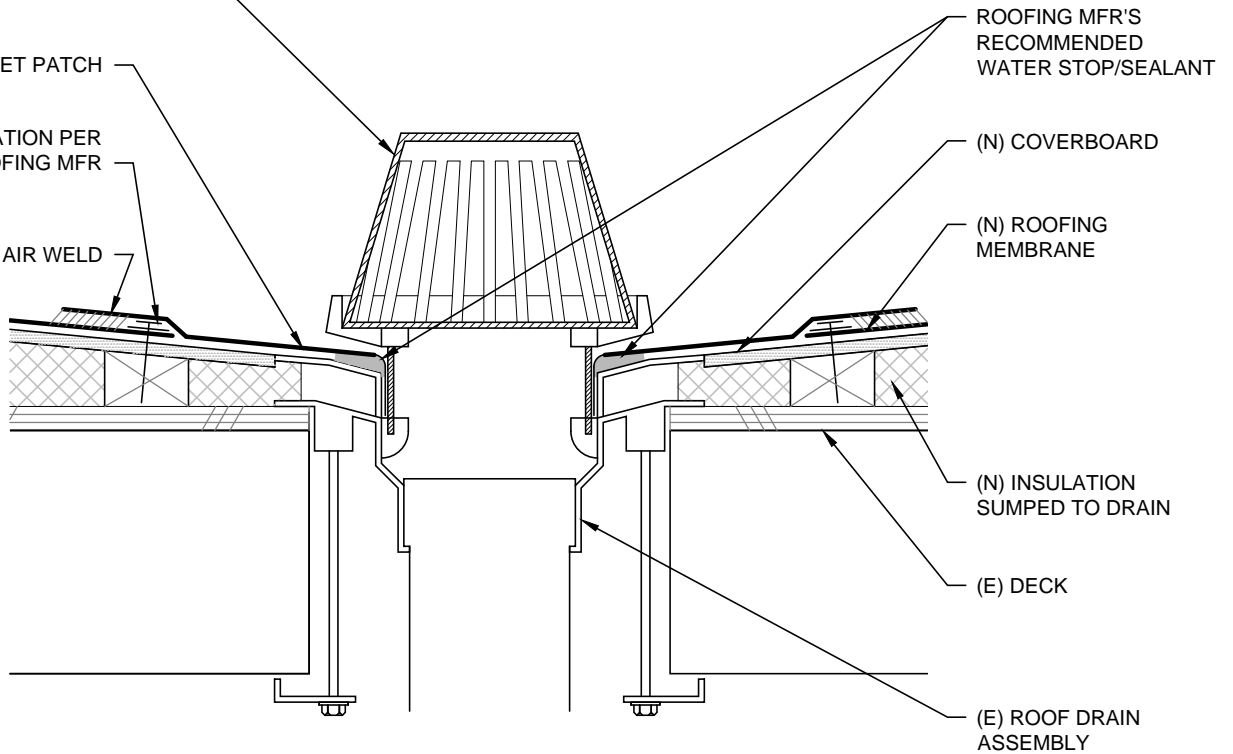
A10

(E) DRAIN SCREEN. REMOVE,
REPAIR, OR REPLACE AND
REINSTALL AS NECESSARY

MEMBRANE TARGET PATCH

TERMINATION PER
ROOFING MFR

HOT AIR WELD



ROOFING MFR'S
RECOMMENDED
WATER STOP/SEALANT

(N) COVERBOARD

(N) ROOFING
MEMBRANE

(N) INSULATION
SUMPED TO DRAIN

(E) DECK

(E) ROOF DRAIN
ASSEMBLY

1
A11

DETAIL @ ROOF DRAIN

Scale: 3"=1'-0"

**Rowell Brokaw
Architects**



Rowell Brokaw Architects, P.C.
One East Broadway, Suite 300
Eugene, Oregon 97401
Voice (541) 485-1003
Fax (541) 485-7344
www.rowellbrokaw.com

SCALE: AS NOTED

PROJECT: UO CASANOVA CENTER ROOF REPLACEMENT

PROJECT #: 1222

DRAWN BY: CA/TB

CHECKED BY: JR

FILE NAME: 1222-CURRENT

DATE: 07/08/2013



A11

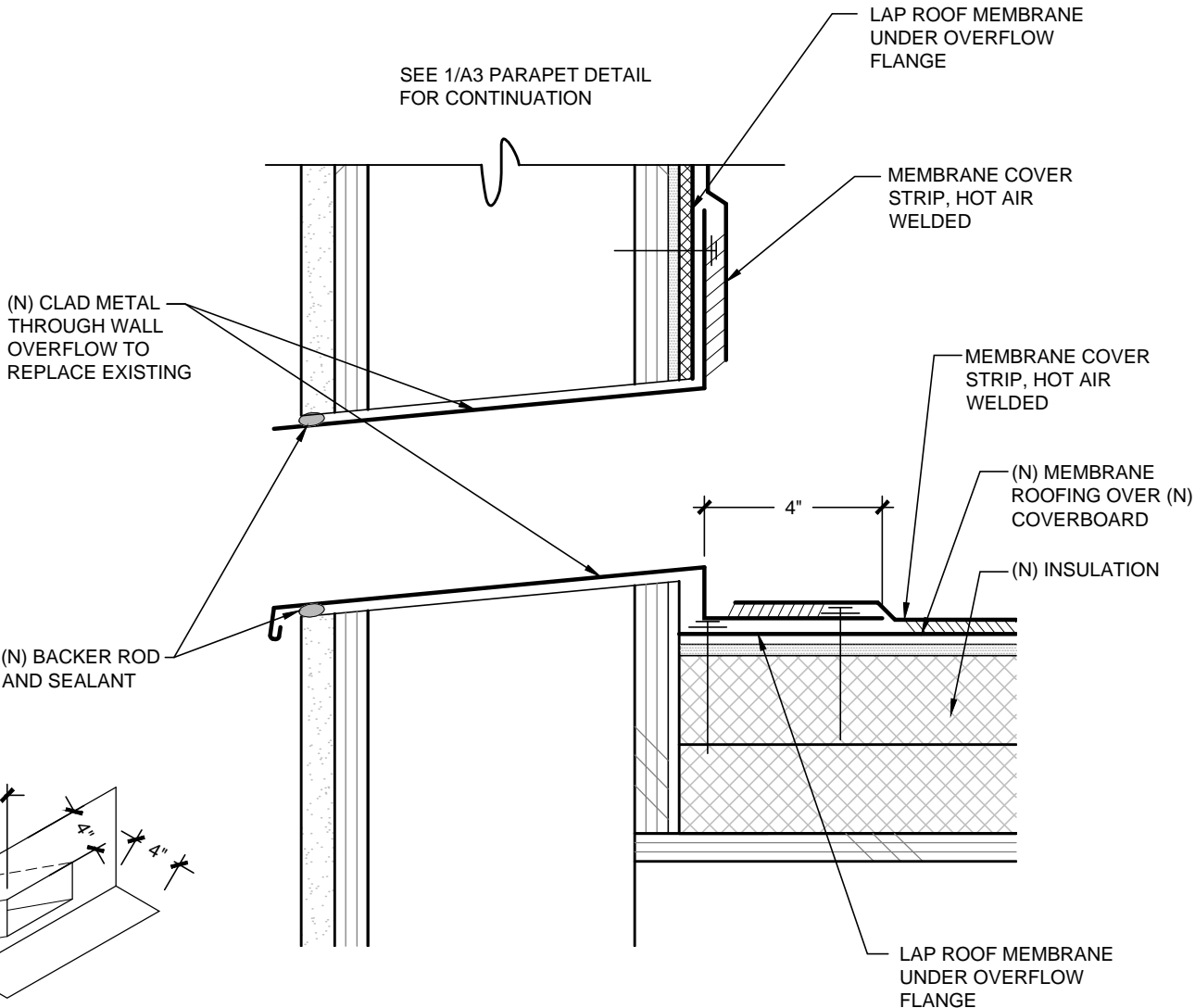


DIAGRAM OF THROUGH WALL FLASHING W/ MIN FLANGE DIMENSIONS

1
A12

DETAIL @ OVERFLOW TO SCUPPER

Scale: 3"=1'-0"

Rowell Brokaw Architects

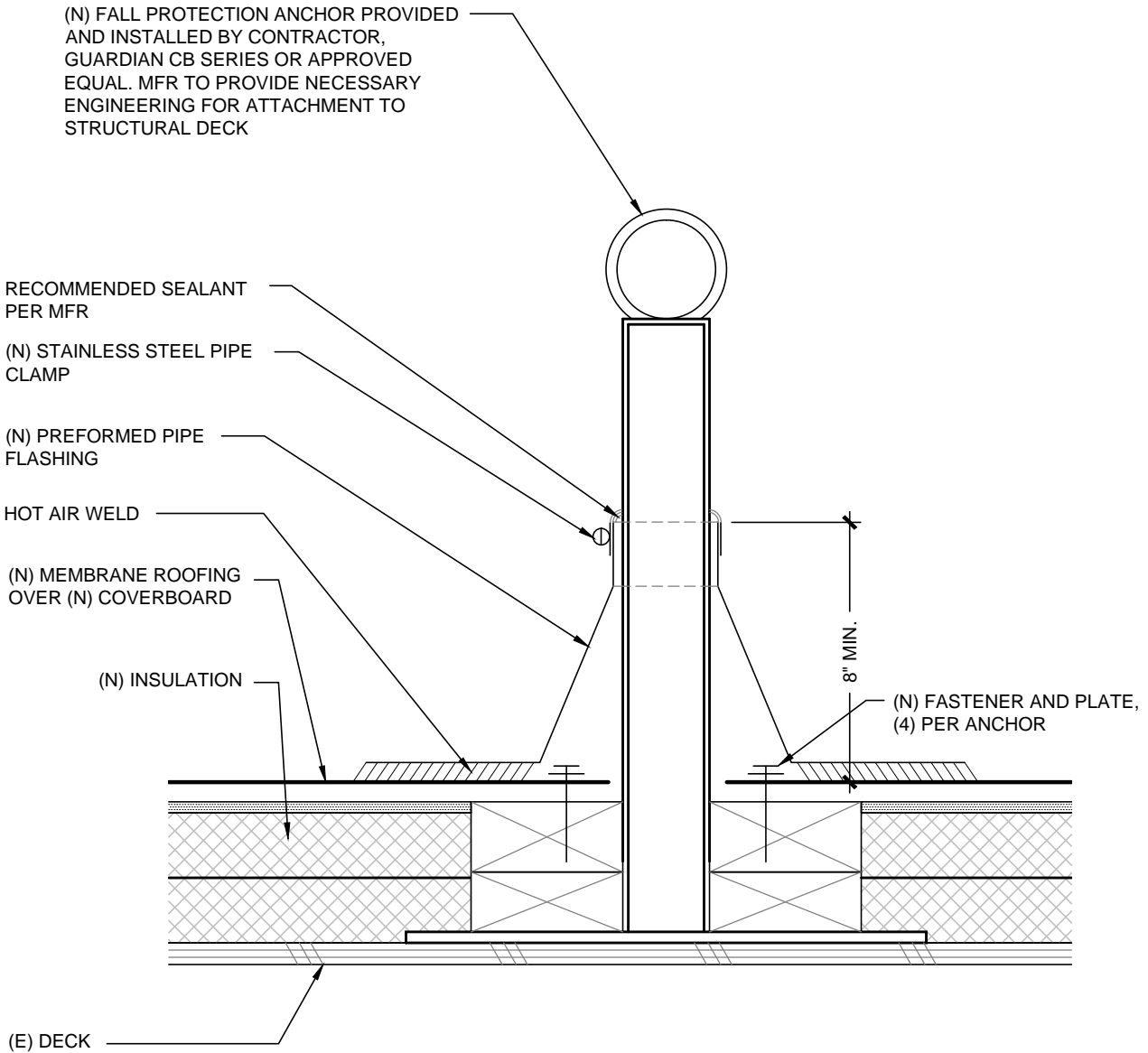
Rowell Brokaw Architects, P.C.
One East Broadway, Suite 300
Eugene, Oregon 97401
Voice (541) 485-1003
Fax (541) 485-7344
www.rowellbrokaw.com

SCALE: AS NOTED

PROJECT: UO CASANOVA CENTER ROOF REPLACEMENT
PROJECT #: 1222
DRAWN BY: CA/TB
CHECKED BY: JR
FILE NAME: 1222-CURRENT
DATE: 07/08/2013



A12



1
A13

DETAIL @ FALL PROTECTION ANCHOR

Scale: 3"=1'-0"

**Rowell Brokaw
Architects**

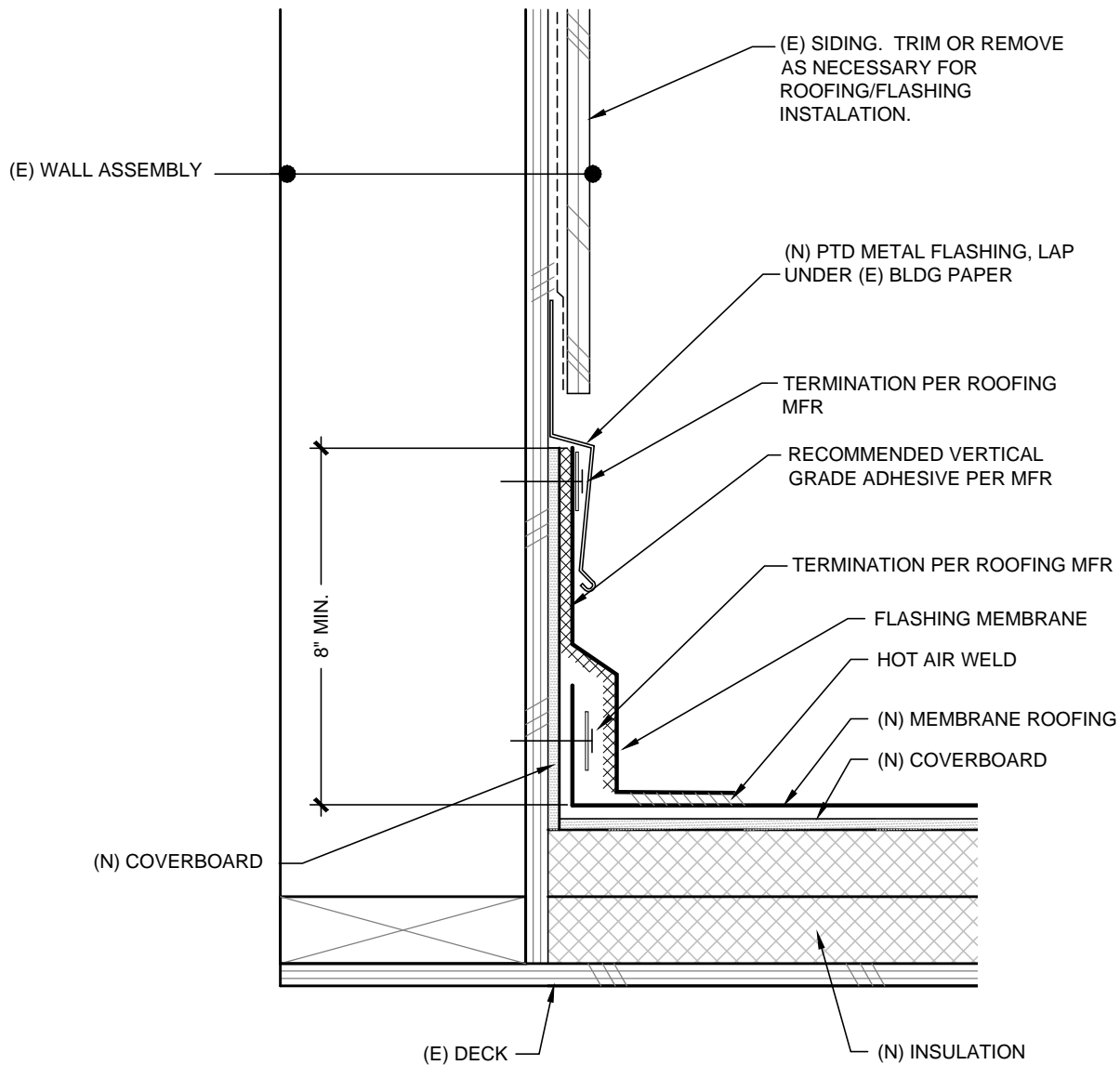
Rowell Brokaw Architects, P.C.
One East Broadway, Suite 300
Eugene, Oregon 97401
Voice (541) 485-1003
Fax (541) 485-7344
www.rowellbrokaw.com

SCALE: AS NOTED

PROJECT: UO CASANOVA CENTER ROOF REPLACEMENT
PROJECT #: 1222
DRAWN BY: CA/TB
CHECKED BY: JR
FILE NAME: 1222-CURRENT
DATE: 07/08/2013



A13



1
A14

SIDEWALL TERMINATION DETAIL @ RAKE

Scale: 3"=1'-0"

Rowell Brokaw
Architects

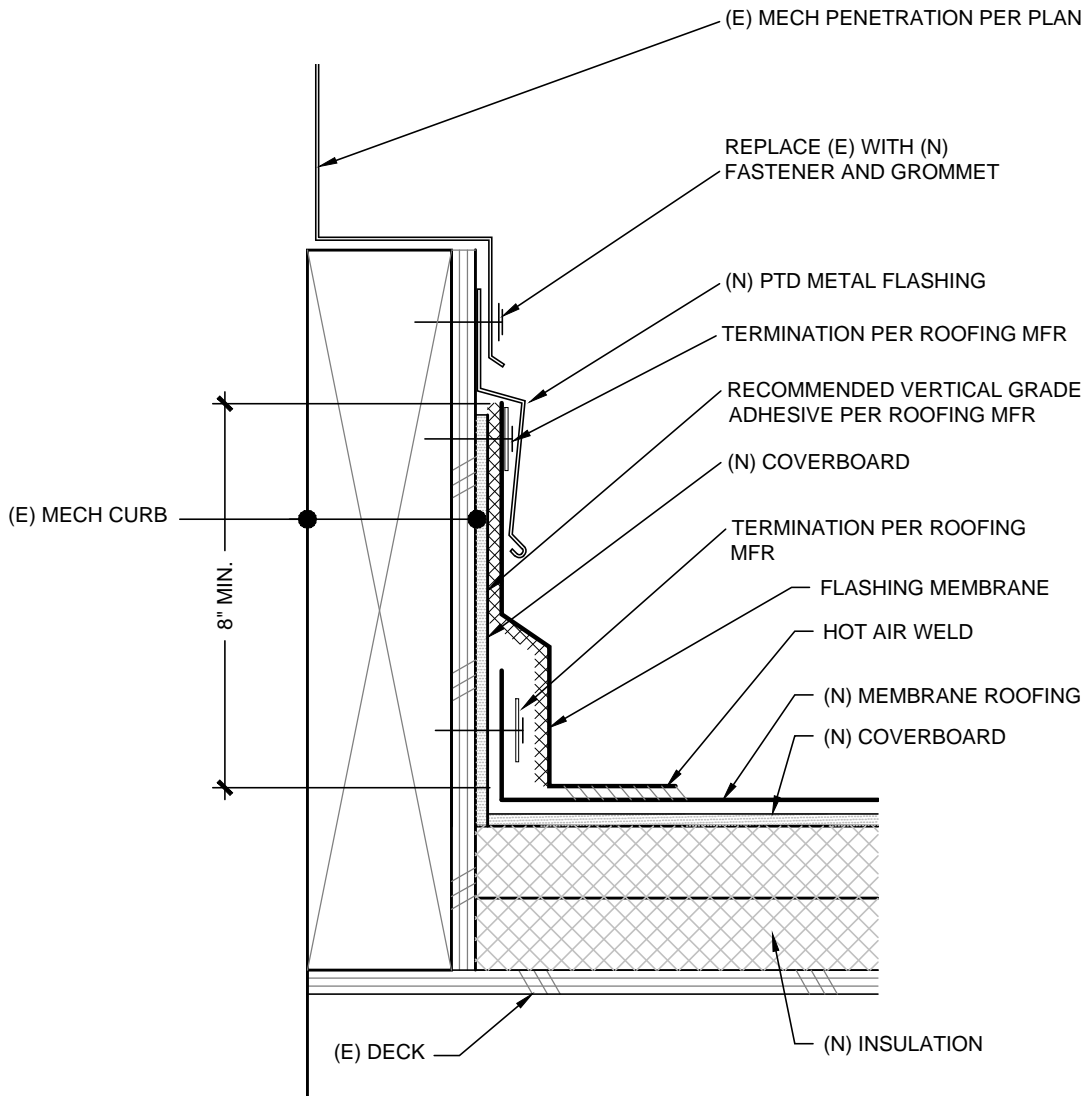
Rowell Brokaw Architects, P.C.
One East Broadway, Suite 300
Eugene, Oregon 97401
Voice (541) 485-1003
Fax (541) 485-7344
www.rowellbrokaw.com

SCALE: AS NOTED

PROJECT: UO CASANOVA CENTER ROOF REPLACEMENT
PROJECT #: 1222
DRAWN BY: CA/TB
CHECKED BY: JR
FILE NAME: 1222-CURRENT
DATE: 07/08/2013



A14



1
A15

TYPICAL MECHANICAL PENETRATION DETAIL

Scale: 3"=1'-0"

Rowell Brokaw Architects, P.C.

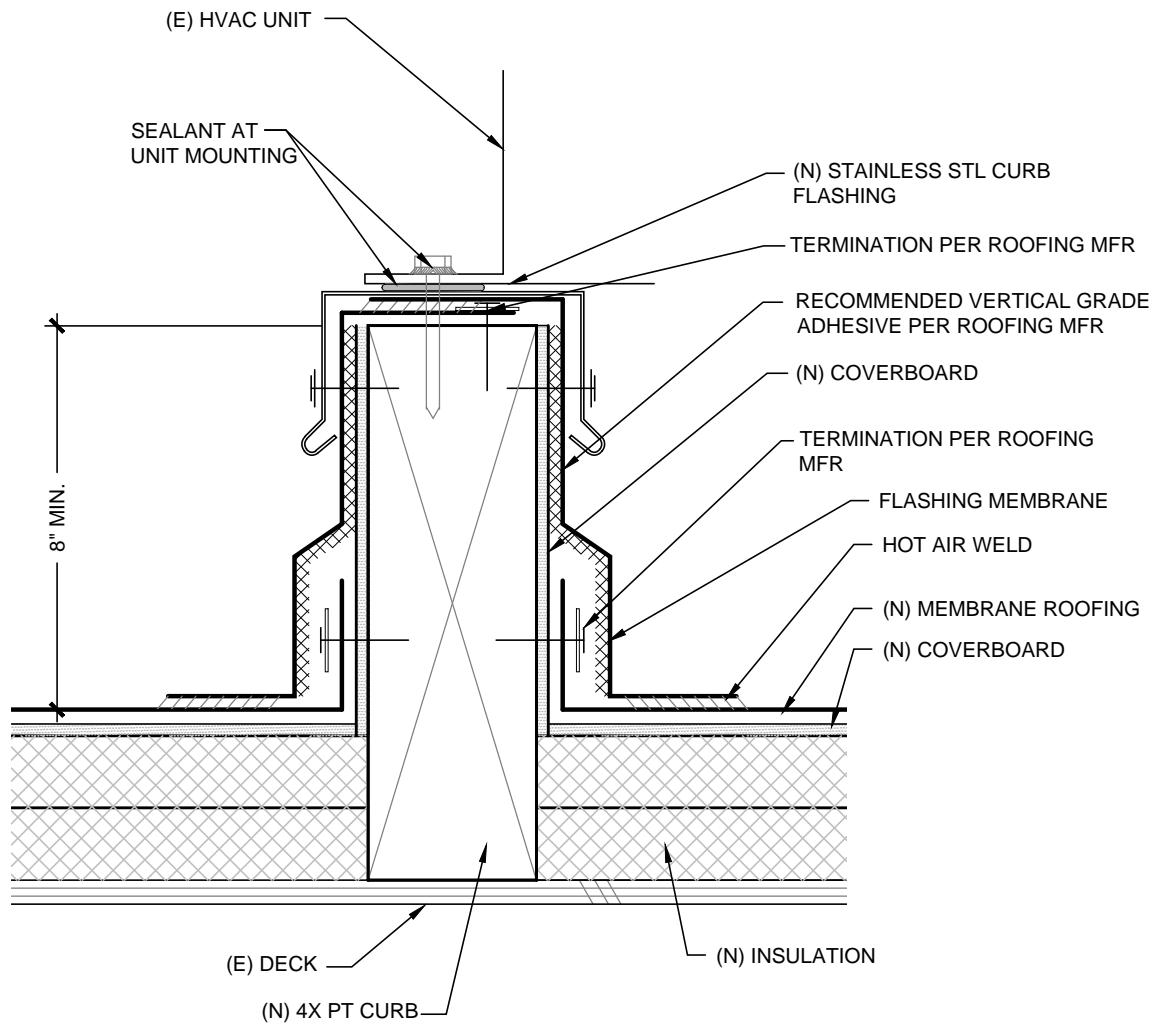
Rowell Brokaw Architects, P.C.
One East Broadway, Suite 300
Eugene, Oregon 97401
Voice (541) 485-1003
Fax (541) 485-7344
www.rowellbrokaw.com

SCALE: AS NOTED

PROJECT: UO CASANOVA CENTER ROOF REPLACEMENT
PROJECT #: 1222
DRAWN BY: CA/TB
CHECKED BY: JR
FILE NAME: 1222-CURRENT
DATE: 07/08/2013



A15



1
A15

TYPICAL MECHANICAL PENETRATION DETAIL

Scale: 3"=1'-0"

Rowell Brokaw Architects

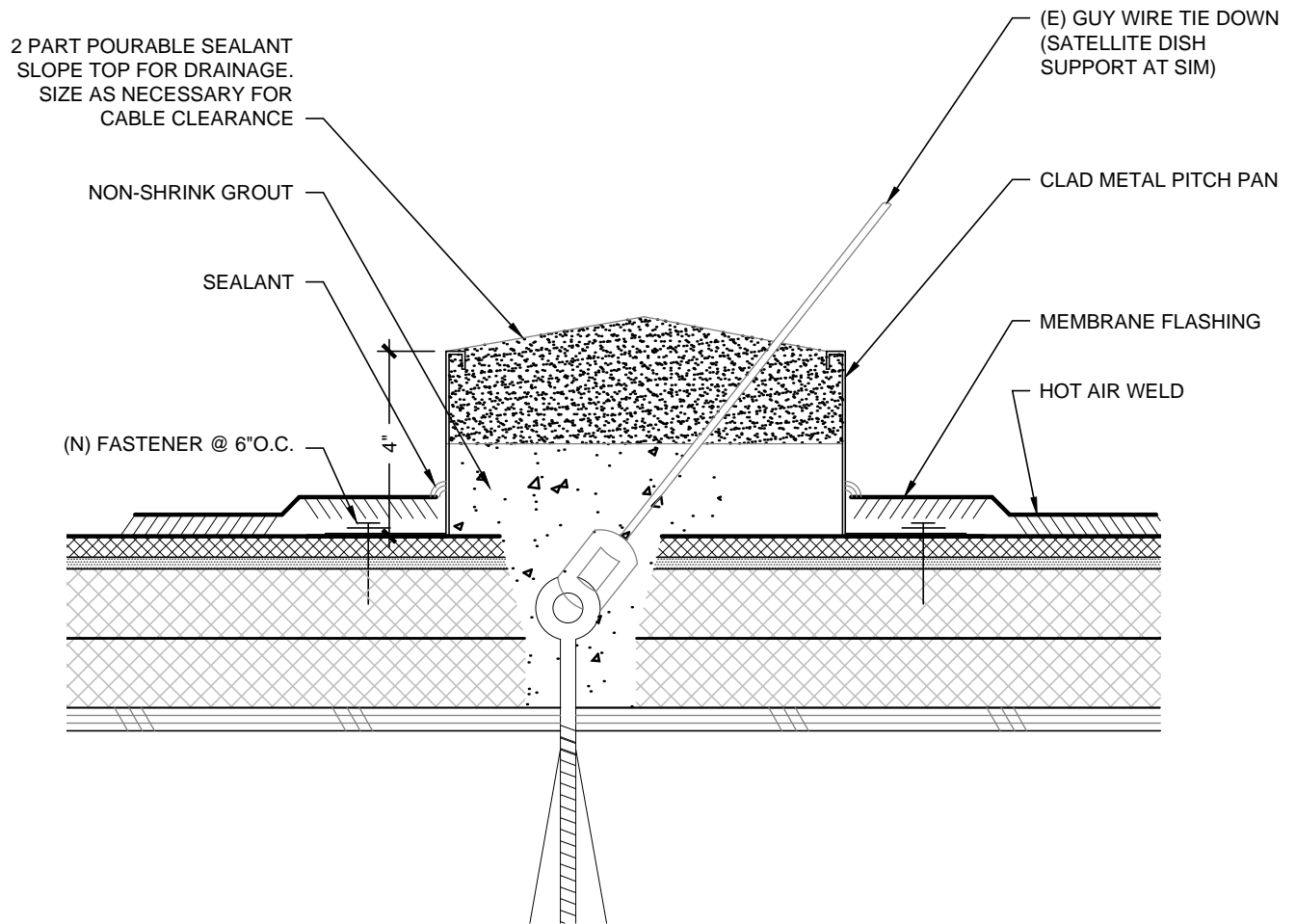
Rowell Brokaw Architects, P.C.
One East Broadway, Suite 300
Eugene, Oregon 97401
Voice (541) 485-1003
Fax (541) 485-7344
www.rowellbrokaw.com

SCALE: AS NOTED

PROJECT: UO CASANOVA CENTER ROOF REPLACEMENT
PROJECT #: 1222
DRAWN BY: CA/TB
CHECKED BY: JR
FILE NAME: 1222-CURRENT
DATE: 07/08/2013



A16



1
A17

PITCH POCKET DETAIL

Scale: 3"=1'-0"

**Rowell Brokaw
Architects**

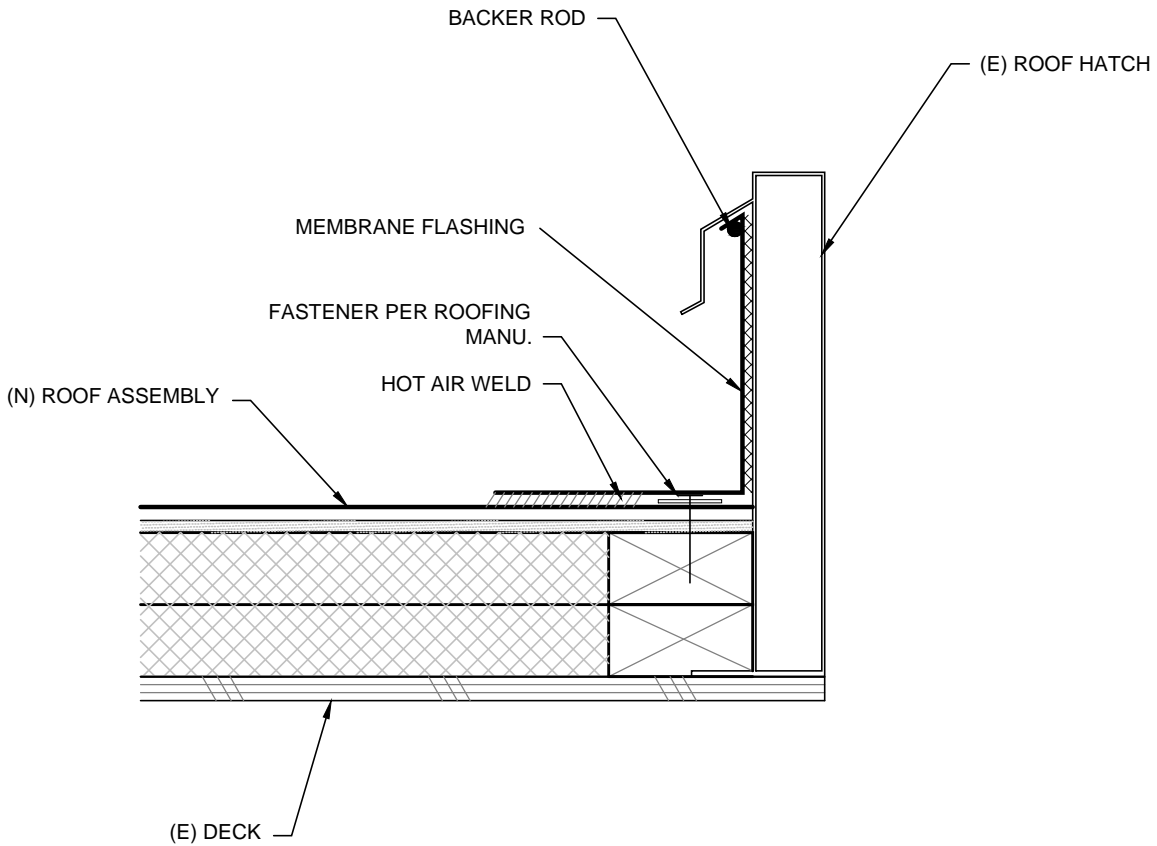
Rowell Brokaw Architects, P.C.
One East Broadway, Suite 300
Eugene, Oregon 97401
Voice (541) 485-1003
Fax (541) 485-7344
www.rowellbrokaw.com

SCALE: AS NOTED

PROJECT: UO CASANOVA CENTER ROOF REPLACEMENT
PROJECT #: 1222
DRAWN BY: CA/TB
CHECKED BY: JR
FILE NAME: 1222-CURRENT
DATE: 07/08/2013



A17



1
A18

ROOF HATCH DETAIL

Scale: 3"=1'-0"

**Rowell Brokaw
Architects**



Rowell Brokaw Architects, P.C.
One East Broadway, Suite 300
Eugene, Oregon 97401
Voice (541) 485-1003
Fax (541) 485-7344
www.rowellbrokaw.com

SCALE: AS NOTED

PROJECT: UO CASANOVA CENTER ROOF REPLACEMENT
PROJECT #: 1222
DRAWN BY: CA/TB
CHECKED BY: JR
FILE NAME: 1222-CURRENT
DATE: 07/08/2013



A18