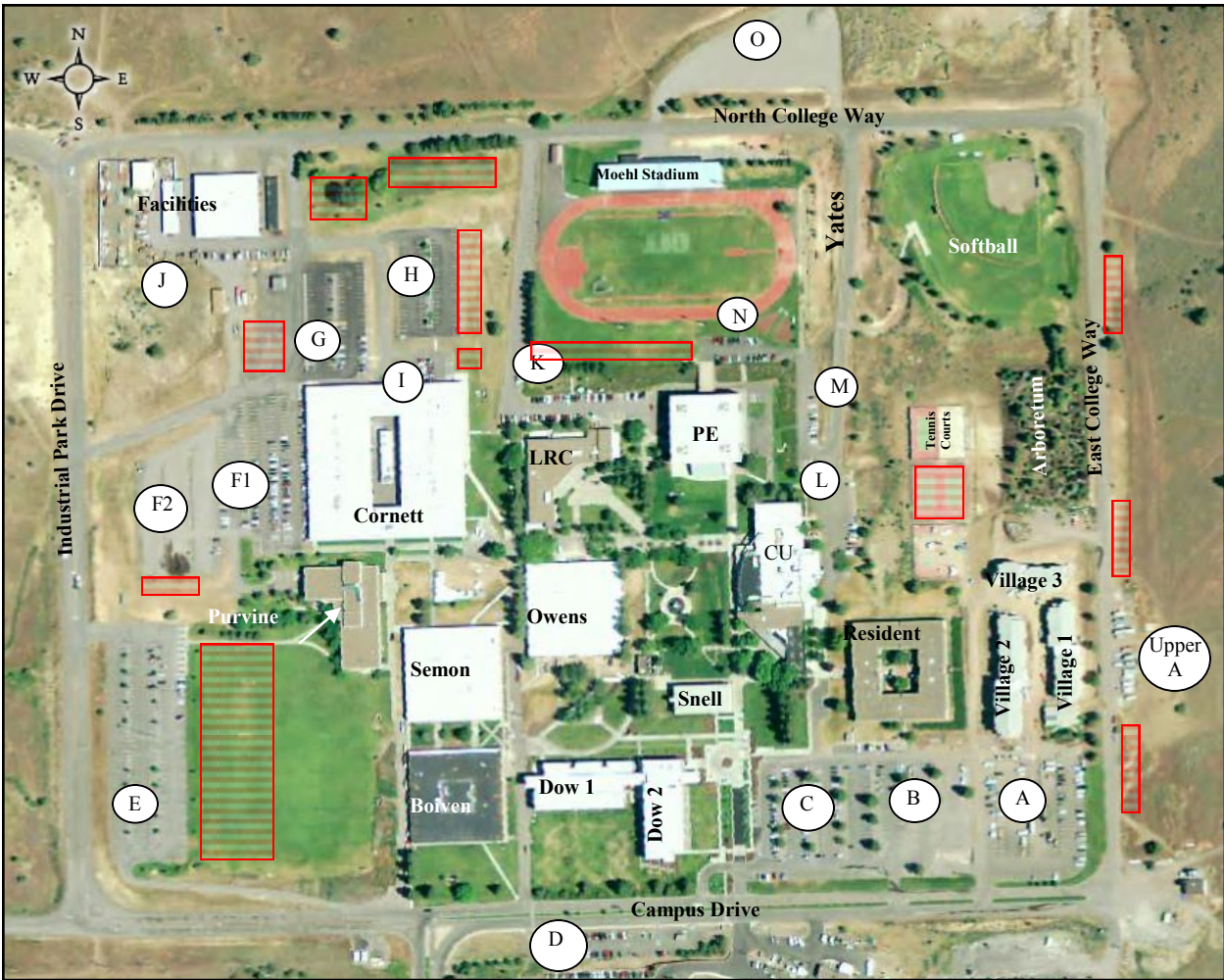


# OIT Parking Lots



Total Parking Spaces Available (including disabled, reserved and service spaces)

	Upper A	25		
A	135		H	96
B	182		I	17
C	196		J	22
D	60		K	97
E	245		L	20
F1	186		M	20
F2	173		N	24
G	95		O	100*

Other small parking areas: 27

Total: 1720

\*Estimate



Potential parking lots