

# WESTERN OREGON UNIVERSITY ITC BUILDING THIRD FLOOR PHASE 2 REMODEL PROJECT

## WOU CAMPUS MONMOUTH, OREGON ADDENDUM #2

April 3, 2013



The specifications and drawings prepared by the firm of Benchmark Architectural services, P.O. Box 2898, Corvallis, Oregon 97339, for the construction of the WOU ITC Building Third Floor Phase 2 Remodel Project located on the WOU campus in Monmouth, Oregon and dated March 14, 2013, are hereby amended in the following particulars:

### GENERAL:

No Modifications

### MODIFICATIONS TO SPECIFICATIONS:

1. Section 09500.2.01, Correction: Delete reference to Armstrong Sanserra acoustic tile. Base Bid acoustic tile product shall be Armstrong Fine Fissured 741, Beveled T&G 12x12 acoustic tile.

### MODIFICATIONS TO DRAWINGS:

1. Drawing A3, Finish Plan, Modification – Owner shall furnish and Contractor shall install mini-blind window coverings for relites R3 and R5 (Rooms 304 and 305).
2. Drawing A7, Relite Schedule, Note #3, Clarification – Relite film shall be 3M 2mm Fasara polyester film, pattern: SH2MA MM San Marino to match existing installation in Suite 310.
3. Drawing A7, Relite Schedule, Clarification – Relites R1, R2, R3, R5, R7, R11 and fire rated door assemblies shall utilize Firelite NT glazing. Relites R12 and R17 shall have tempered glazing.

## ADDENDUM #2

4. Drawing A7, Relite Schedule, Modification – Delete translucent film at relites R3 and R5.
5. Drawing A8, Details 5/A8, 6/A8, Existing and Proposed Window Details, Clarification – All details are missing the graphic representation of the existing aluminum angle. See attached drawing A8 for details showing the aluminum angle.
6. Drawing E0.1, Panel Schedule 2CC, Modification – Provide circuiting for copy machine located in Conference Room 309.
7. Drawing E2, New Work Power Plan, Modification - Provide new power and data to serve copy machine in Conference room 309.
8. Drawing E2, Note #4, Correction – Delete reference to "a data outlet with (4) data jacks at the instructor console." Substitute the following reference: "a data outlet with (6) data jacks at the instructor console."

**APPROVED SUBSTITUTIONS:** The specific requirements of substitution approvals are noted on individual substitution request forms. Verify models and features requirements prior to bidding listed substitutions. Note that products listed have products that appear to meet the requirements of the specified items, and are accepted for bidding purposes only. Approvals for meeting all aspects of specified products are at time of submittal review.

No substitution items have been submitted for review at this date.

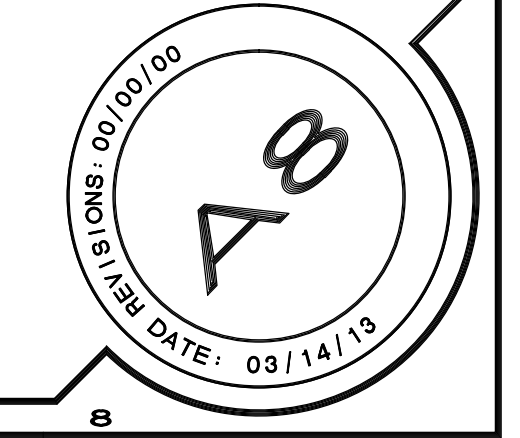
### **ATTACHMENTS:**

A8 – Window Details  
E0.1 – Panel Schedule Modification  
E2 – Power Plan Modifications

**END OF ADDENDUM**

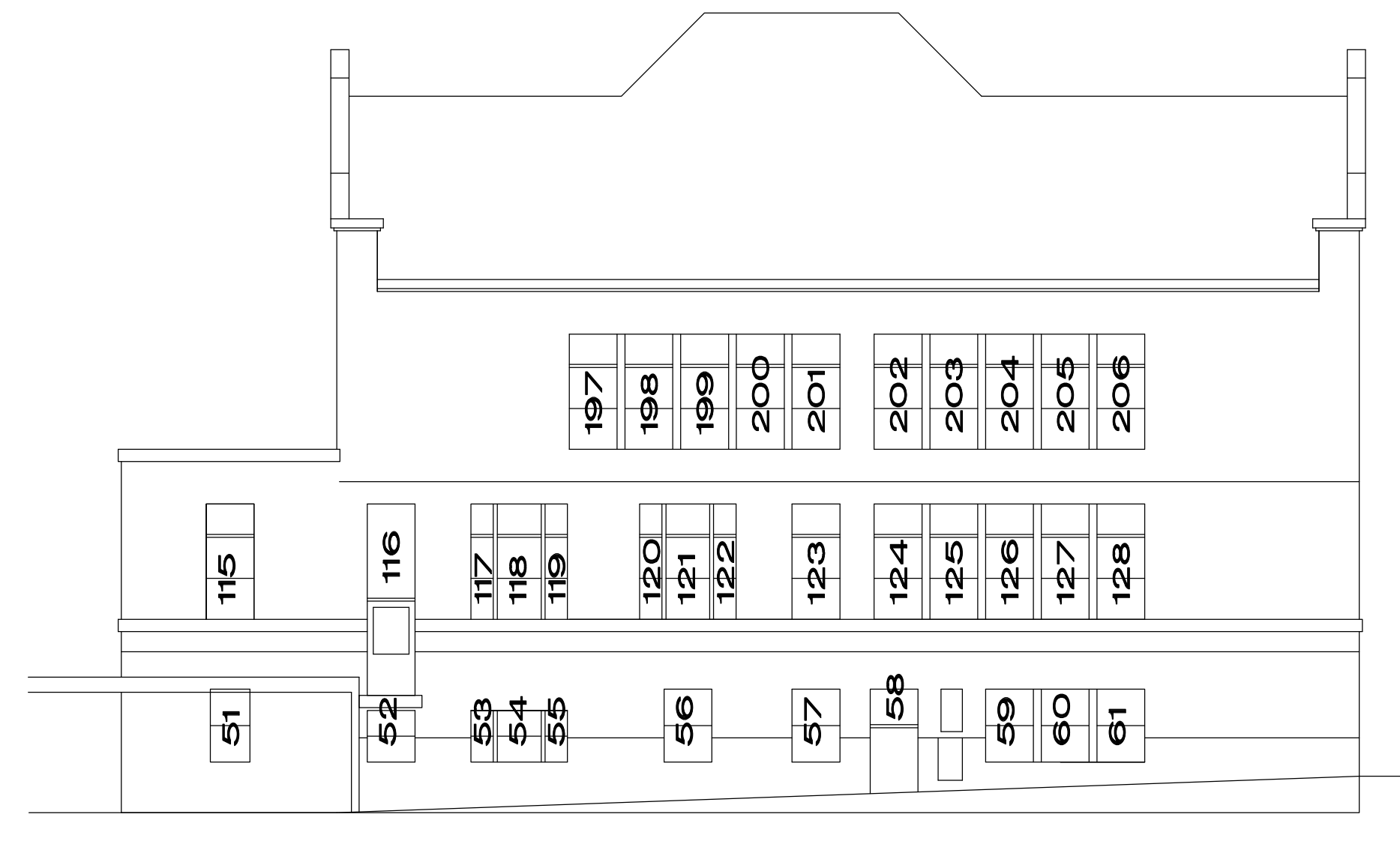


WESTERN OREGON UNIVERSITY  
 ITC BUILDING THIRD FLOOR PHASE 2 REMODEL PROJECT  
 WESTERN OREGON UNIVERSITY CAMPUS, MONMOUTH, OREGON  
**BENCHMARK ARCHITECTURAL SERVICES**  
 P.O. BOX 2898, CORVALLIS, OREGON 97339, PHONE/FAX (541) 752-1939, benchmark@proaxis.com

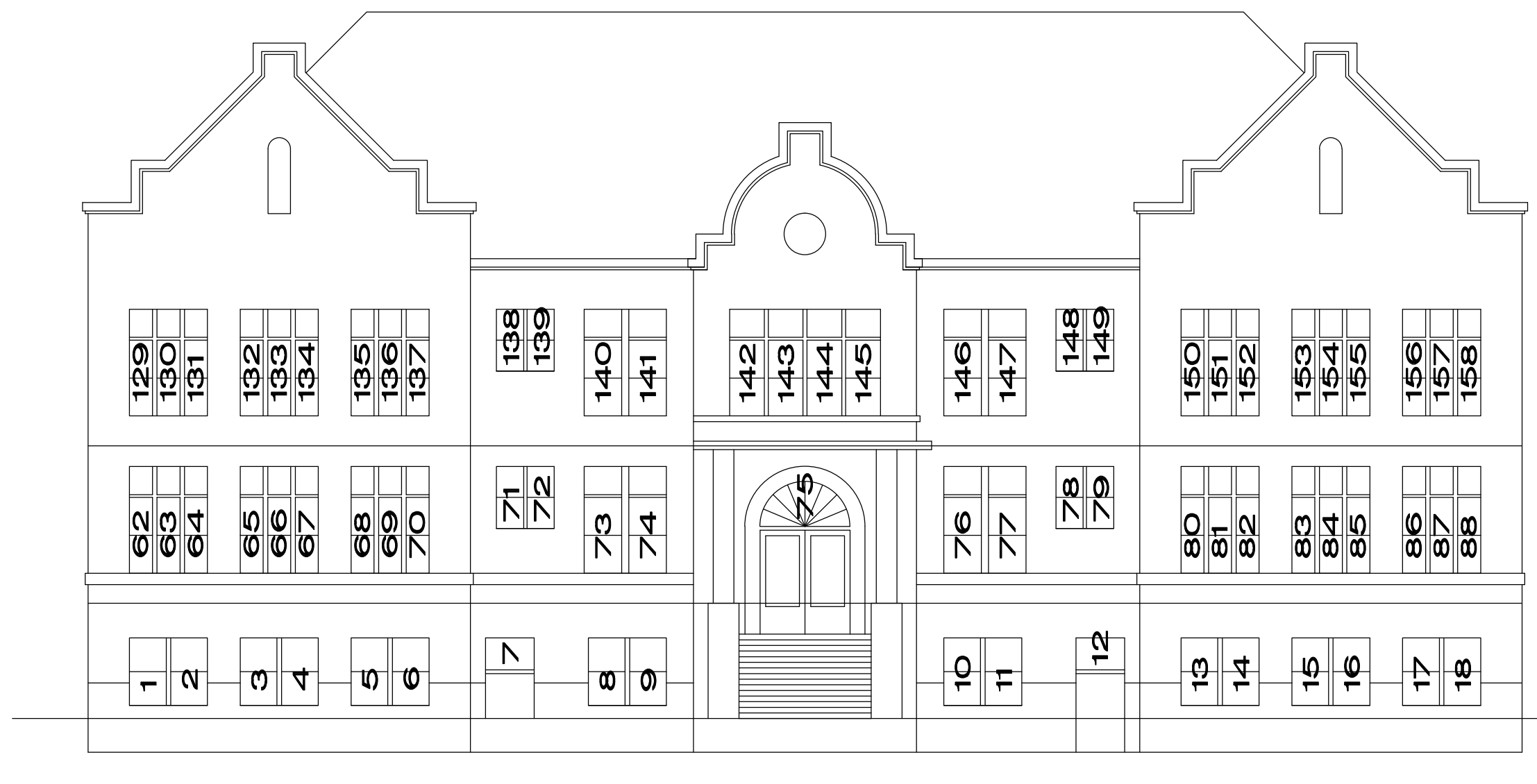


### WINDOW SCHEDULE

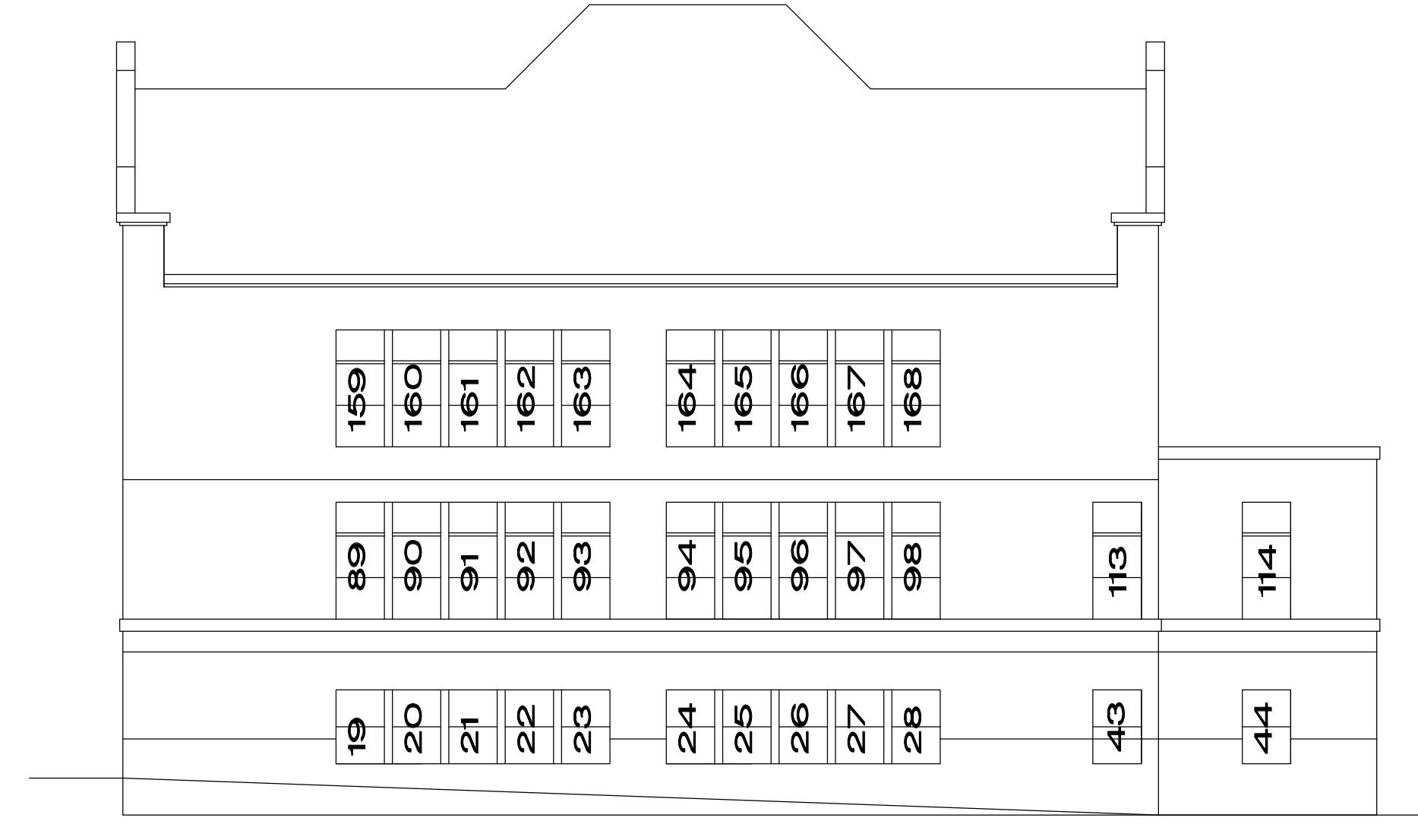
MARK	NOM. SIZE	TYPE	DETAILS	MARK	NOM. SIZE	TYPE	DETAILS
1.	3057	SINGLE HUNG	5/1 6/1	104.	3082	PICTURE /SH.	5/1 6/1 SIM.
2.	3057	SINGLE HUNG	5/1 6/1	105.	2841	SINGLE HUNG	5/1 6/1
3.	3057	SINGLE HUNG	5/1 6/1	106.	4542	PICTURE	5/1 6/1 SIM.
4.	3057	SINGLE HUNG	5/1 6/1	107.	4542	PICTURE	5/1 6/1 SIM.
5.	3057	SINGLE HUNG	5/1 6/1	108.	3882	PICTURE /SH.	5/1 6/1 SIM.
6.	3057	SINGLE HUNG	5/1 6/1	109.	3882	PICTURE /SH.	5/1 6/1 SIM.
7.	3424	PICTURE	5/1 6/1 SIM.	110.	4542	PICTURE	5/1 6/1
8.	3251	SINGLE HUNG	5/1 6/1	111.	4542	PICTURE	5/1 6/1
9.	3251	SINGLE HUNG	5/1 6/1	112.	2841	SINGLE HUNG	5/1 6/1
10.	3251	SINGLE HUNG	5/1 6/1	113.	3682	PICTURE /SH.	5/1 6/1 SIM.
11.	3251	SINGLE HUNG	5/1 6/1	114.	3682	PICTURE /SH.	5/1 6/1 SIM.
12.	3424	PICTURE	5/1 6/1 SIM.	115.	3682	PICTURE /SH.	5/1 6/1 SIM.
13.	3057	SINGLE HUNG	5/1 6/1	116.	3916	PICTURE	5/1 6/1 SIM.
14.	3057	SINGLE HUNG	5/1 6/1	117.	1882	PICTURE *	5/1 6/1 SIM.
15.	3057	SINGLE HUNG	5/1 6/1	118.	1882	PICTURE *	5/1 6/1 SIM.
16.	3057	SINGLE HUNG	5/1 6/1	119.	1882	PICTURE *	5/1 6/1 SIM.
17.	3057	SINGLE HUNG	5/1 6/1	120.	1882	PICTURE *	5/1 6/1 SIM.
18.	3951	SINGLE HUNG	5/1 6/1	121.	1882	PICTURE *	5/1 6/1 SIM.
19.	3951	SINGLE HUNG	5/1 6/1	122.	1882	PICTURE *	5/1 6/1 SIM.
20.	3951	SINGLE HUNG	5/1 6/1	123.	4082	PICTURE /SH.	5/1 6/1 SIM.
21.	3951	SINGLE HUNG	5/1 6/1	124.	4082	PICTURE /SH.	5/1 6/1 SIM.
22.	3951	SINGLE HUNG	5/1 6/1	125.	4082	PICTURE /SH.	5/1 6/1 SIM.
23.	3951	SINGLE HUNG	5/1 6/1	126.	4082	PICTURE /SH.	5/1 6/1 SIM.
24.	3951	SINGLE HUNG	5/1 6/1	127.	4082	PICTURE /SH.	5/1 6/1 SIM.
25.	3951	SINGLE HUNG	5/1 6/1	128.	4082	PICTURE /SH.	5/1 6/1 SIM.
26.	3951	SINGLE HUNG	5/1 6/1	129.	2482	PICTURE /SH.	5/1 6/1 SIM.
27.	3951	SINGLE HUNG	5/1 6/1	130.	2482	PICTURE /SH.	5/1 6/1 SIM.
28.	3951	SINGLE HUNG	5/1 6/1	131.	2482	PICTURE /SH.	5/1 6/1 SIM.
29.	3057	SINGLE HUNG	5/1 6/1	132.	2482	PICTURE /SH.	5/1 6/1 SIM.
30.	3057	SINGLE HUNG	5/1 6/1	133.	2482	PICTURE /SH.	5/1 6/1 SIM.
31.	3057	SINGLE HUNG	5/1 6/1	134.	2482	PICTURE /SH.	5/1 6/1 SIM.
32.	3057	SINGLE HUNG	5/1 6/1	135.	2482	PICTURE /SH.	5/1 6/1 SIM.
33.	3057	SINGLE HUNG	5/1 6/1	136.	2482	PICTURE /SH.	5/1 6/1 SIM.
34.	3057	SINGLE HUNG	5/1 6/1	137.	2482	PICTURE /SH.	5/1 6/1 SIM.
35.	3425	PICTURE	5/1 6/1 SIM.	138.	2851	SINGLE HUNG	5/1 6/1
36.	3630	SINGLE HUNG	5/1 6/1	139.	2851	SINGLE HUNG	5/1 6/1
37.	3356	SINGLE HUNG	5/1 6/1	140.	3482	PICTURE /SH.	5/1 6/1 SIM.
38.	3356	SINGLE HUNG	5/1 6/1	141.	3482	PICTURE /SH.	5/1 6/1 SIM.
39.	3356	SINGLE HUNG	5/1 6/1	142.	3182	PICTURE /SH.	5/1 6/1 SIM.
40.	3356	SINGLE HUNG	5/1 6/1	143.	3182	PICTURE /SH.	5/1 6/1 SIM.
41.	3356	SINGLE HUNG	5/1 6/1	144.	3182	PICTURE /SH.	5/1 6/1 SIM.
42.	3629	SINGLE HUNG	5/1 6/1	145.	3182	PICTURE /SH.	5/1 6/1 SIM.
43.	3635	SINGLE HUNG	5/1 6/1	146.	3482	PICTURE /SH.	5/1 6/1 SIM.
44.	3651	SINGLE HUNG	5/1 6/1	147.	3482	PICTURE /SH.	5/1 6/1 SIM.
45.	3057	SINGLE HUNG	5/1 6/1	148.	2851	SINGLE HUNG	5/1 6/1
46.	3057	SINGLE HUNG	5/1 6/1	149.	2851	SINGLE HUNG	5/1 6/1
47.	3057	SINGLE HUNG	5/1 6/1	150.	2482	PICTURE /SH.	5/1 6/1 SIM.
48.	3057	SINGLE HUNG	5/1 6/1	151.	2482	PICTURE /SH.	5/1 6/1 SIM.
49.	3057	SINGLE HUNG	5/1 6/1	152.	2482	PICTURE /SH.	5/1 6/1 SIM.
50.	3057	SINGLE HUNG	5/1 6/1	153.	2482	PICTURE /SH.	5/1 6/1 SIM.
51.	3657	SINGLE HUNG	5/1 6/1	154.	2482	PICTURE /SH.	5/1 6/1 SIM.
52.	3635	SINGLE HUNG	5/1 6/1	155.	2482	PICTURE /SH.	5/1 6/1 SIM.
53.	1835	SINGLE HUNG	5/1 6/1	156.	2482	PICTURE /SH.	5/1 6/1 SIM.
54.	3935	SINGLE HUNG	5/1 6/1	157.	2482	PICTURE /SH.	5/1 6/1 SIM.
55.	1835	SINGLE HUNG	5/1 6/1	158.	2482	PICTURE /SH.	5/1 6/1 SIM.
56.	3651	SINGLE HUNG	5/1 6/1	159.	4082	PICTURE /SH.	5/1 6/1 SIM.
57.	3651	SINGLE HUNG	5/1 6/1	160.	4082	PICTURE /SH.	5/1 6/1 SIM.
58.	3529	SINGLE HUNG	5/1 6/1	161.	4082	PICTURE /SH.	5/1 6/1 SIM.
59.	3951	SINGLE HUNG	5/1 6/1	162.	4082	PICTURE /SH.	5/1 6/1 SIM.
60.	3951	SINGLE HUNG	5/1 6/1	163.	4082	PICTURE /SH.	5/1 6/1 SIM.
61.	3951	SINGLE HUNG	5/1 6/1	164.	4082	PICTURE /SH.	5/1 6/1 SIM.
62.	2482	PICTURE /SH.	5/1 6/1 SIM.	165.	4082	PICTURE /SH.	5/1 6/1 SIM.
63.	2482	PICTURE /SH.	5/1 6/1 SIM.	166.	4082	PICTURE /SH.	5/1 6/1 SIM.
64.	2482	PICTURE /SH.	5/1 6/1 SIM.	167.	4082	PICTURE /SH.	5/1 6/1 SIM.
65.	2482	PICTURE /SH.	5/1 6/1 SIM.	168.	4082	PICTURE /SH.	5/1 6/1 SIM.
66.	2482	PICTURE /SH.	5/1 6/1 SIM.	169.	3082	PICTURE /SH.	5/1 6/1 SIM.
67.	2482	PICTURE /SH.	5/1 6/1 SIM.	170.	3082	PICTURE /SH.	5/1 6/1 SIM.
68.	2482	PICTURE /SH.	5/1 6/1 SIM.	171.	3082	PICTURE /SH.	5/1 6/1 SIM.
69.	2482	PICTURE /SH.	5/1 6/1 SIM.	172.	3082	PICTURE /SH.	5/1 6/1 SIM.
70.	2482	PICTURE /SH.	5/1 6/1 SIM.	173.	3082	PICTURE /SH.	5/1 6/1 SIM.
71.	2851	SINGLE HUNG	5/1 6/1	174.	3082	PICTURE /SH.	5/1 6/1 SIM.
72.	2851	SINGLE HUNG	5/1 6/1	175.	2841	SINGLE HUNG	5/1 6/1
73.	3482	PICTURE /SH.	5/1 6/1 SIM.	176.	30610	PICTURE	5/1 6/1 SIM.
74.	3482	PICTURE /SH.	5/1 6/1 SIM.	177.	30610	PICTURE	5/1 6/1 SIM.
75.	NO INDICATIONS			178.	30610	PICTURE	5/1 6/1 SIM.
76.	3482	PICTURE /SH.	5/1 6/1 SIM.	179.	30610	PICTURE	5/1 6/1 SIM.
77.	3482	PICTURE /SH.	5/1 6/1 SIM.	180.	30610	PICTURE	5/1 6/1 SIM.
78.	2851	SINGLE HUNG	5/1 6/1	181.	30610	PICTURE	5/1 6/1 SIM.
79.	2851	SINGLE HUNG	5/1 6/1	182.	4010	SINGLE HUNG	5/1 6/1
80.	2482	PICTURE /SH.	5/1 6/1 SIM.	183.	30610	PICTURE	5/1 6/1 SIM.
81.	2482	PICTURE /SH.	5/1 6/1 SIM.	184.	30610	PICTURE	5/1 6/1 SIM.
82.	2482	PICTURE /SH.	5/1 6/1 SIM.	185.	30610	PICTURE	5/1 6/1 SIM.
83.	2482	PICTURE /SH.	5/1 6/1 SIM.	186.	30610	PICTURE	5/1 6/1 SIM.
84.	2482	PICTURE /SH.	5/1 6/1 SIM.	187.	30610	PICTURE	5/1 6/1 SIM.
85.	2482	PICTURE /SH.	5/1 6/1 SIM.	188.	30610	PICTURE	5/1 6/1 SIM.
86.	2482	PICTURE /SH.	5/1 6/1 SIM.	189.	30610	PICTURE	5/1 6/1 SIM.
87.	2482	PICTURE /SH.	5/1 6/1 SIM.	190.	2841	SINGLE HUNG	5/1 6/1
88.	2482	PICTURE /SH.	5/1 6/1 SIM.	191.	3082	PICTURE /SH.	5/1 6/1 SIM.
89.	4082	PICTURE /SH.	5/1 6/1 SIM.	192.	3082	PICTURE /SH.	5/1 6/1 SIM.
90.	4082	PICTURE /SH.	5/1 6/1 SIM.	193.	3082	PICTURE /SH.	5/1 6/1 SIM.
91.	4082	PICTURE /SH.	5/1 6/1 SIM.	194.	3082	PICTURE /SH.	5/1 6/1 SIM.
92.	4082	PICTURE /SH.	5/1 6/1 SIM.	195.	3082	PICTURE /SH.	5/1 6/1 SIM.
93.	4082	PICTURE /SH.	5/1 6/1 SIM.	196.	3082	PICTURE /SH.	5/1 6/1 SIM.
94.	4082	PICTURE /SH.	5/1 6/1 SIM.	197.	4082	PICTURE /SH.	5/1 6/1 SIM.
95.	4082	PICTURE /SH.	5/1 6/1 SIM.	198.	4082	PICTURE /SH.	5/1 6/1 SIM.
96.	4082	PICTURE /SH.	5/1 6/1 SIM.	199.	4082	PICTURE /SH.	5/1 6/1 SIM.
97.	4082	PICTURE /SH.	5/1 6/1 SIM.	200.	4082	PICTURE /SH.	5/1 6/1 SIM.
98.	4082	PICTURE /SH.	5/1 6/1 SIM.	201.	4082	PICTURE /SH.	5/1 6/1 SIM.
99.	4082	PICTURE /SH.	5/1 6/1 SIM.	202.	4082	PICTURE /SH.	5/1 6/1 SIM.
100.	3082	PICTURE /SH.	5/1 6/1 SIM.	203.	4082	PICTURE /SH.	5/1 6/1 SIM.
101.	3082	PICTURE /SH.	5/1 6/1 SIM.	204.	4082	PICTURE /SH.	5/1 6/1 SIM.
102.	3082	PICTURE /SH.	5/1 6/1 SIM.	205.	4082	PICTURE /SH.	5/1 6/1 SIM.
103.	3082	PICTURE /SH.	5/1 6/1 SIM.	206.	4082	PICTURE /SH.	5/1 6/1 SIM.



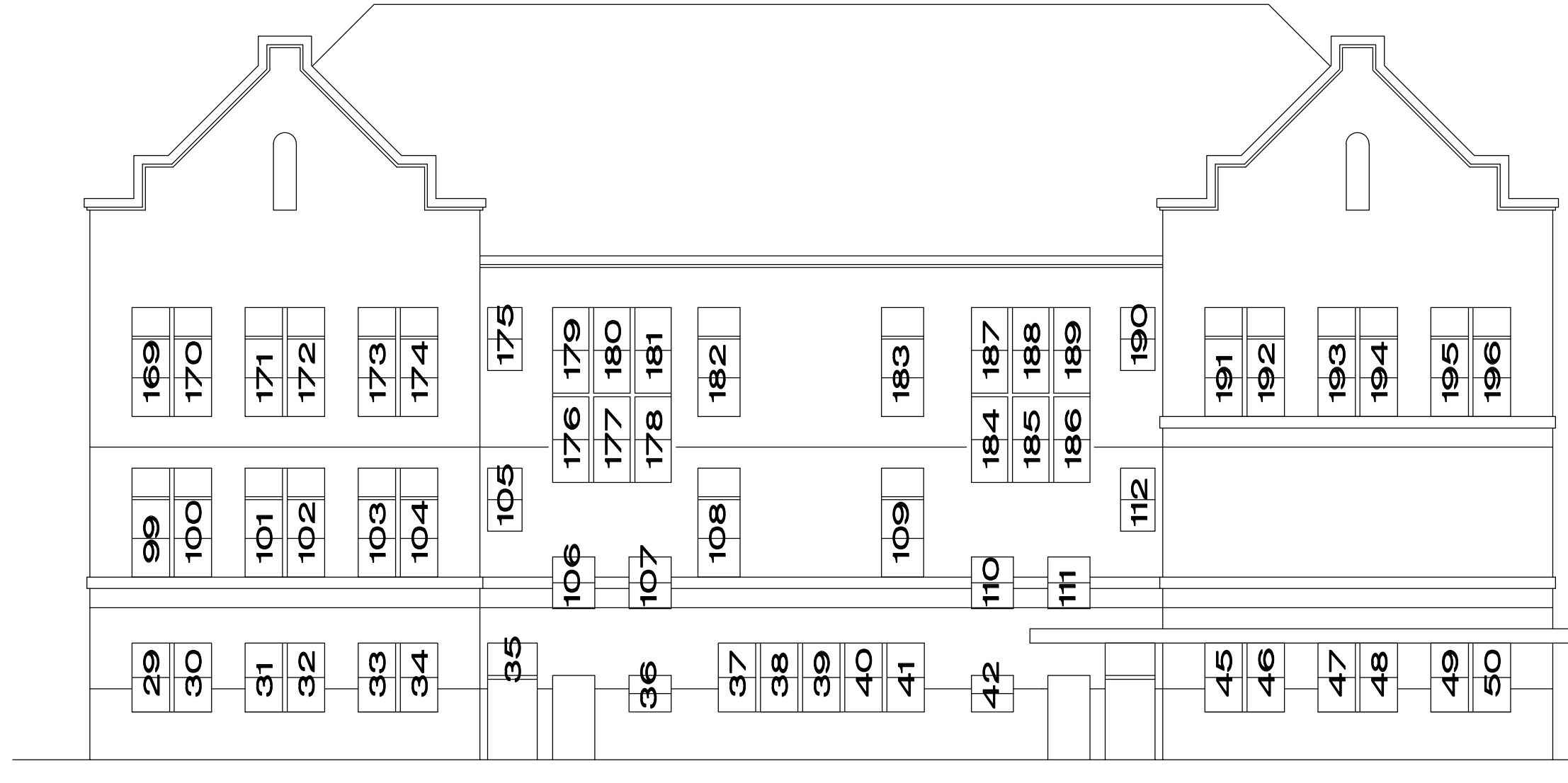
**1 NORTH ELEVATION**  
A8 N.T.S.



**2 WEST ELEVATION**  
A8 N.T.S.



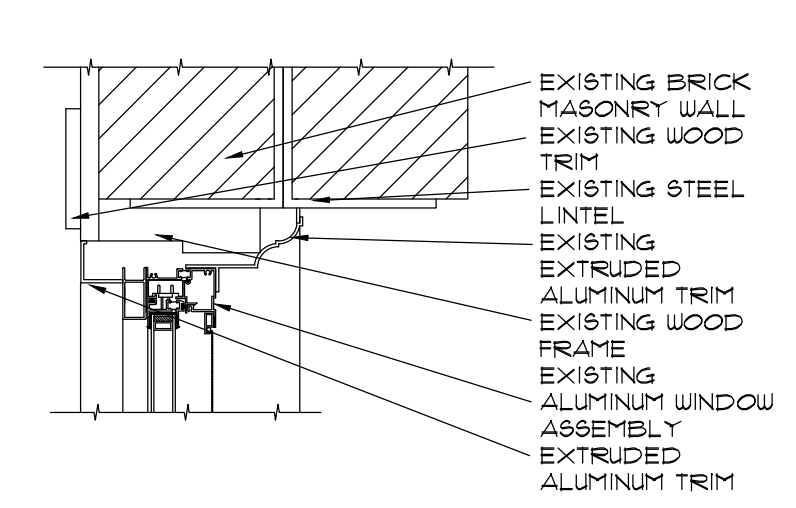
**3 SOUTH ELEVATION**  
A8 N.T.S.



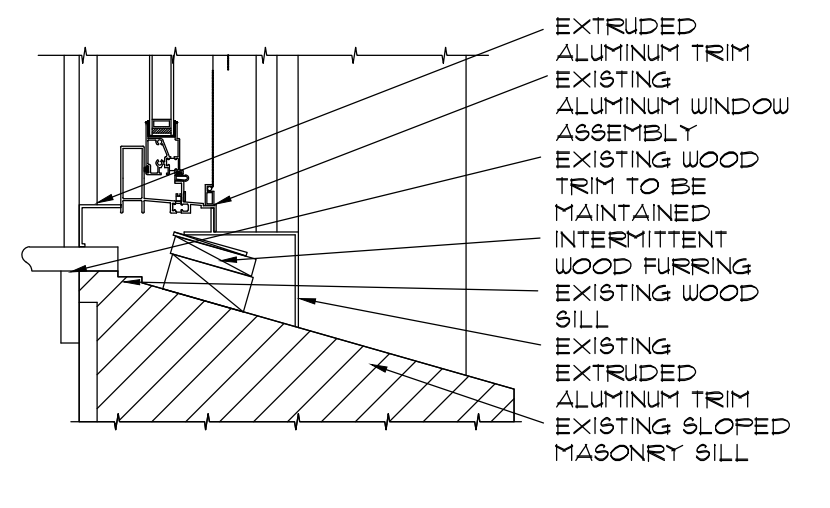
**4 EAST ELEVATION**  
A8 N.T.S.

**NOTES:**

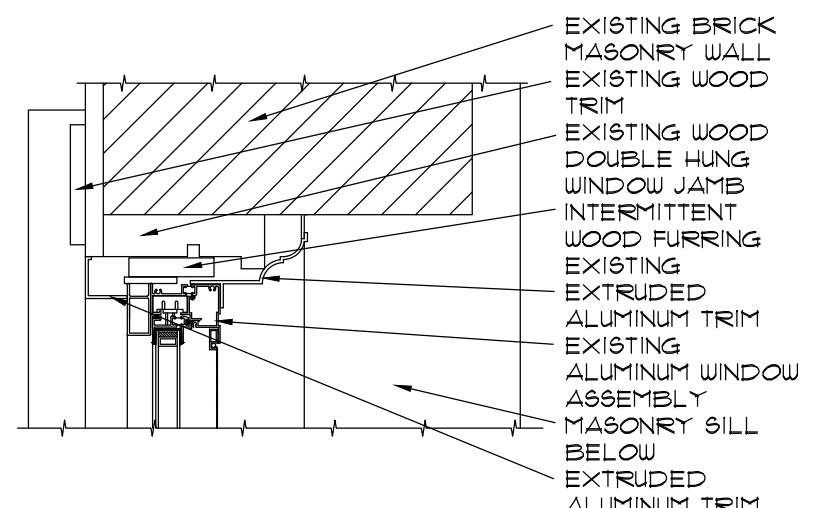
- PROJECT SCOPE INCLUDES PAINTING OF ALL EXISTING EXTERIOR METAL DOORS AND HOLLOW METAL FRAMES (EXTERIOR FACES ONLY). COLOR: CUSTOM MATCH TO NEW VINYL WINDOW UNITS (CASCADE WINDOW COLOR COAT #322-2 - "DARK BRONZE").
- PROVIDE PAINTED FINISH AT INTERIOR ALUMINUM TRIM THAT IS TO BE REUSED. COLOR TO MATCH NEW WINDOW ASSEMBLIES (CASCADE WINDOW WHITE).
- POWER-WASH AND PREPARE FOR PAINTING THE EXISTING EXTERIOR ALUMINUM TRIM THAT IS TO BE MAINTAINED. NEW PAINTED FINISH SHALL CUSTOM MATCH CASCADE WINDOW COLOR COAT #322-2. NOTE THAT THIS WORK IS DELETED UNDER ALTERNATE BID ITEM #4, WINDOWS 106, 107, 110, 116, 117, 118, 119, 120, 181, 184, 185, 186, 187, 188 AND 189 SHALL HAVE INSULATED TEMPERED SAFETY GLAZING. THE WINDOWS SHALL BE CONFIGURED TO HAVE TWO PANE WITH HORIZONTAL DIVIDERS POSITIONED TO MATCH THE APPEARANCE OF THE TYPICAL SINGLE HUNG WINDOW UNITS.
- WINDOWS IDENTIFIED AS "PICTURE/SH." SHALL HAVE PICTURE WINDOW UNIT MILLED ABOVE. A SINGLE HUNG WINDOW UNIT IN SIMILAR PROPORTION TO EXISTING WINDOW #62.
- WINDOWS MARKED WITH AN "X" ON THE WINDOW SCHEDULE SHALL BE THREE PICTURE WINDOWS MILLED TOGETHER TO PROVIDE AN APPEARANCE SIMILAR TO TYPICAL "PICTURE/SH." UNITS
- WINDOWS 45 AND 113 ARE SHOWN WITH DASHED LINES TO INDICATE THAT THESE WINDOWS ARE HIDDEN BY THE SOUTH BUILDING WING IN SOUTH BUILDING ELEVATION.
- EXISTING FIRE ESCAPES ASSEMBLIES AND ADJACENT STRUCTURES ARE NOT SHOWN ON BUILDING ELEVATIONS FOR CLARITY



**A-HEAD**

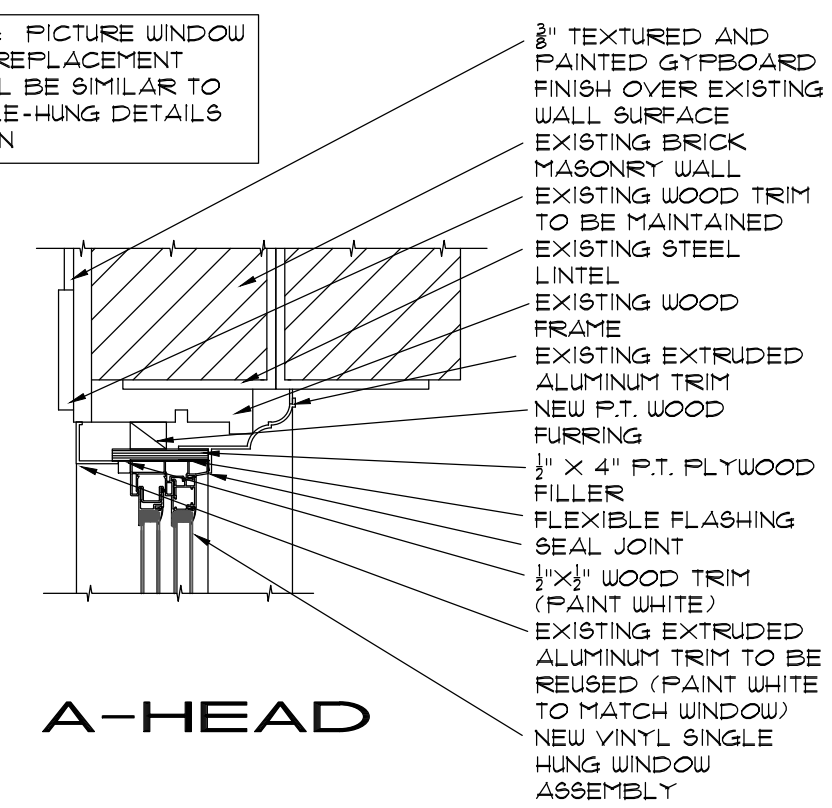


**B-SILL**



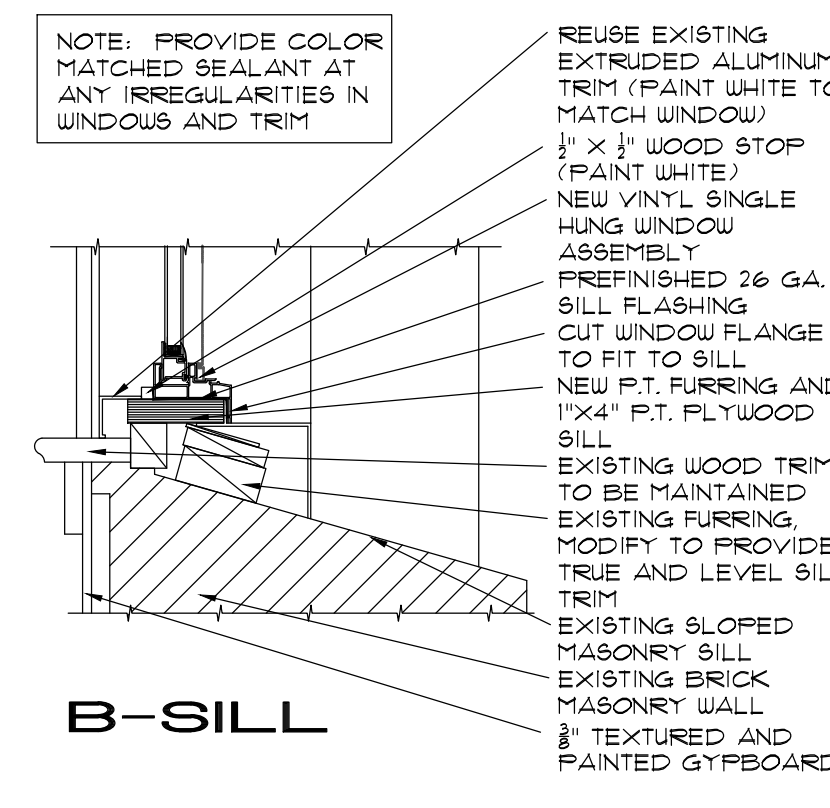
**C-JAMB**

NOTE: PICTURE WINDOW UNIT REPLACEMENT SHALL BE SIMILAR TO SINGLE-HUNG DETAILS SHOWN

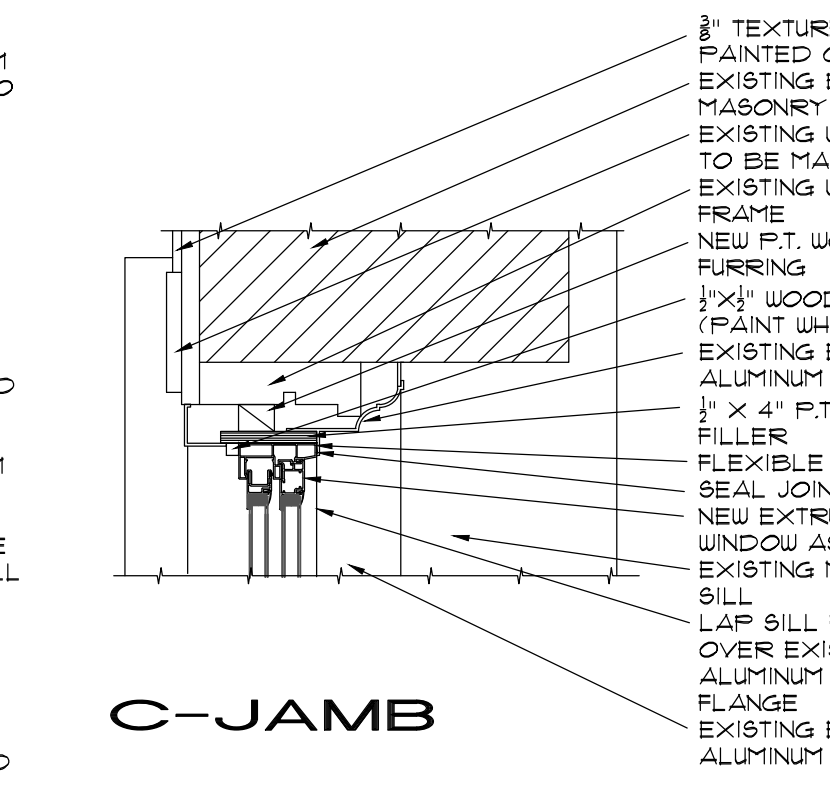


**A-HEAD**

NOTE: PROVIDE COLOR MATCHED SEALANT AT ANY IRREGULARITIES IN WINDOWS AND TRIM



**B-SILL**



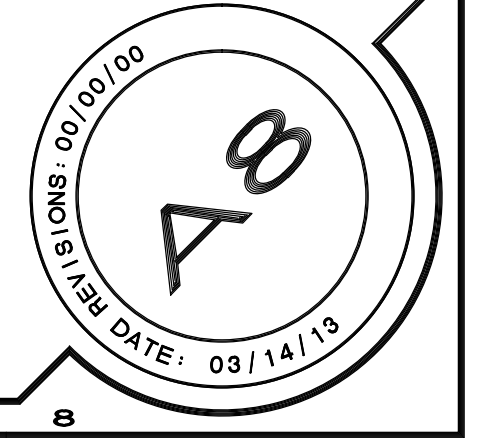
**C-JAMB**

**5 EXISTING WINDOW DETAILS**  
A8 1/2" = 1'-0"

DETAILING IS ILLUSTRATED AS OBSERVED AT WINDOW 11. THE ORIGINAL WINDOW FRAME WAS OBSERVED TO BE IN SOUND CONDITION. SOME VARIATION IN DETAILING AND CONDITION SHALL BE ASSUMED TO EXIST

**6 NEW WINDOW DETAILS**  
A8 1/2" = 1'-0"

CONTRACTOR SHALL COMPLETE ONE TYPICAL WINDOW REPLACEMENT INSTALLATION FOR THE OWNER'S REPRESENTATIVE PRIOR TO BEGINNING INSTALLATION OF THE BALANCE OF THE WINDOWS.



**PANELBOARD SCHEDULE: 2C2**

NOOD	PANELBOARD TYPE	FEEDER ENTRANCE:		PANEL LOCATION:	
120/208	VOLTAGE	1 PHASE	MAIN BREAKER	TOP	SEE PLANS
225	AMP MAIN BUS	3 WIRE	MAIN LUGS	BOTTOM	FEEDER CABLE:
	NEMA ENCLOSURE	200% NEUT.	FEED THRU LUGS		SOURCE:
	RMS SYMMETRICAL AMPS @	208/120 VOLTS	SUB-FEED BREAKER		
3/28/13	DATE	COPPER BUS	SOLID NEUTRAL		

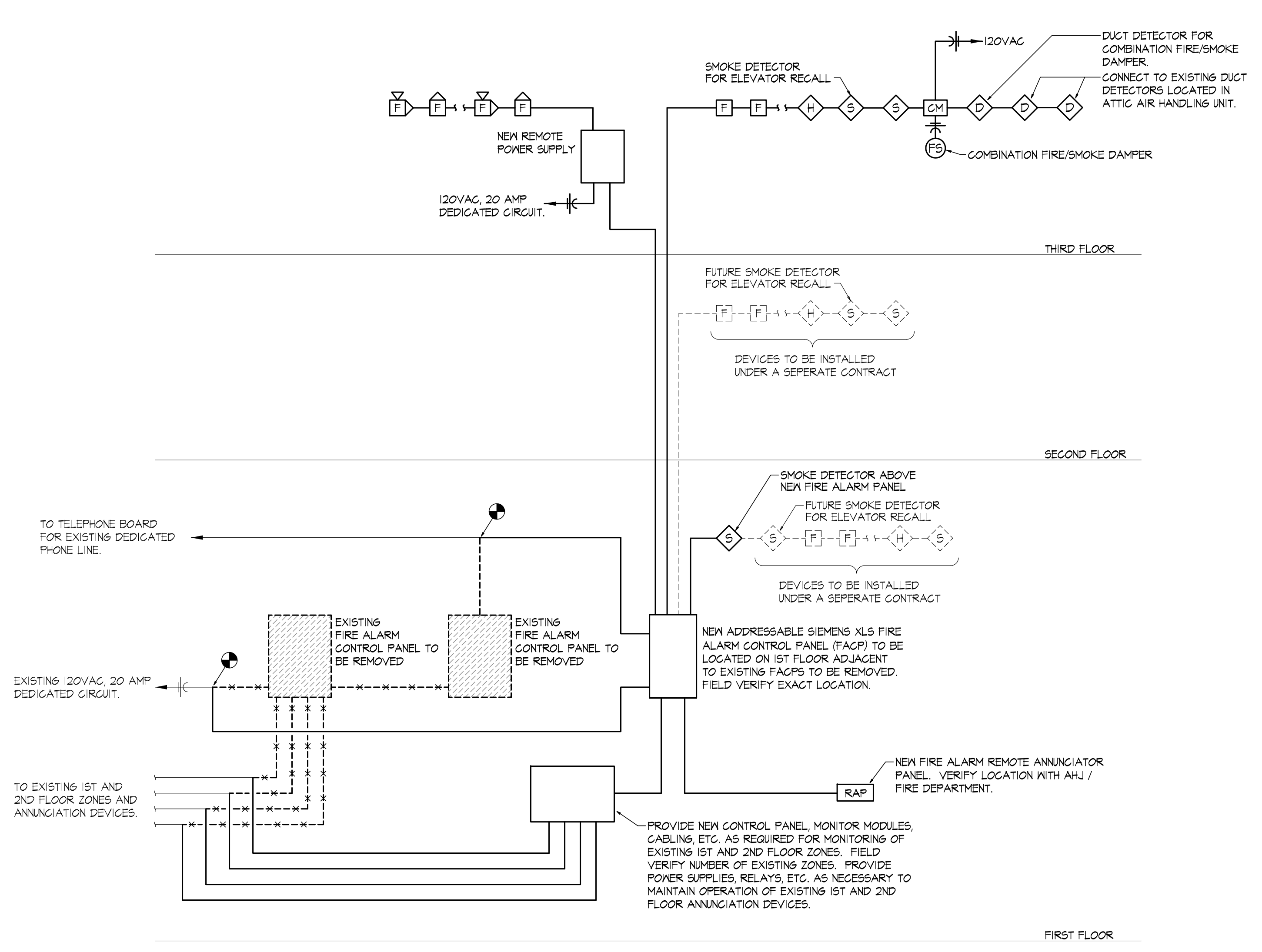
POLE #	SERVICE	VA LOAD		LOAD TYPE	WIRE SIZE	C.B.		WIRE SIZE	LOAD TYPE	VA LOAD		SERVICE	POLE #
		L1	L2			TRIP	POLE			L1	L2		
1	B11 TABLE RECPT				20	1	20	1				B11 TABLE RECPT	2
3	B11 TABLE RECPT				20	1	20	1				B11 TABLE RECPT	4
5	B11 TABLE RECPT				20	1	20	1				CAMERA, PROJ RECPT	6
7	B11 TABLE RECPT				20	1	20	1				SCREENS	8
9	B11 TABLE RECPT				20	1	20	1				SERVER RECPT	10
11	B11 TABLE RECPT				20	1	20	1				B11 RECEPTACLES	12
13	B10 OFFICE RECPT				20	1	20	1				SERVER RECPT	14
15	B10 OFFICE RECPT				20	1	20	1				B11 CONSOLE	16
17	B10 AV RECPTS				20	1	20	1	12	R		B04 - RECPTS	18
19	B10 OFFICE RECPT				20	1	20	1	12	R	540	B13, B14, B15 - RECPTS	20
21	B10 AV RECPT				20	1	20	1	12	M	616	EXHAUST FAN EF-1	22
23	FIRE ALARM NAC	180		MI	12	20	1	12	R	120	C800 & B07 RECPTS	24	
25	B04 & B05 - CAMERAS	360		R	12	20	1	12	R	1080	B06 & B08 - RECPTS	26	
27	B04 - COPIER	1200		MI	12	20	1				BLANK	28	
29	BLANK										BLANK	30	

**PANELBOARD SCHEDULE: 2C2**

NOOD	PANELBOARD TYPE	FEEDER ENTRANCE:		PANEL LOCATION:	
120/208	VOLTAGE	3 PHASE	4 WIRE	TOP	SEE PLANS
	AMP MAIN BUS		MAIN LUGS	BOTTOM	FEEDER CABLE:
	NEMA ENCLOSURE	200% RATED NEUTRAL	FEED THRU LUGS		SOURCE:
	RMS SYMMETRICAL AMPS @	VOLTS	SUB-FEED BREAKER	X SURFACE	
2/14/13	DATE	COPPER BUSING	SOLID NEUTRAL	FLUSH	

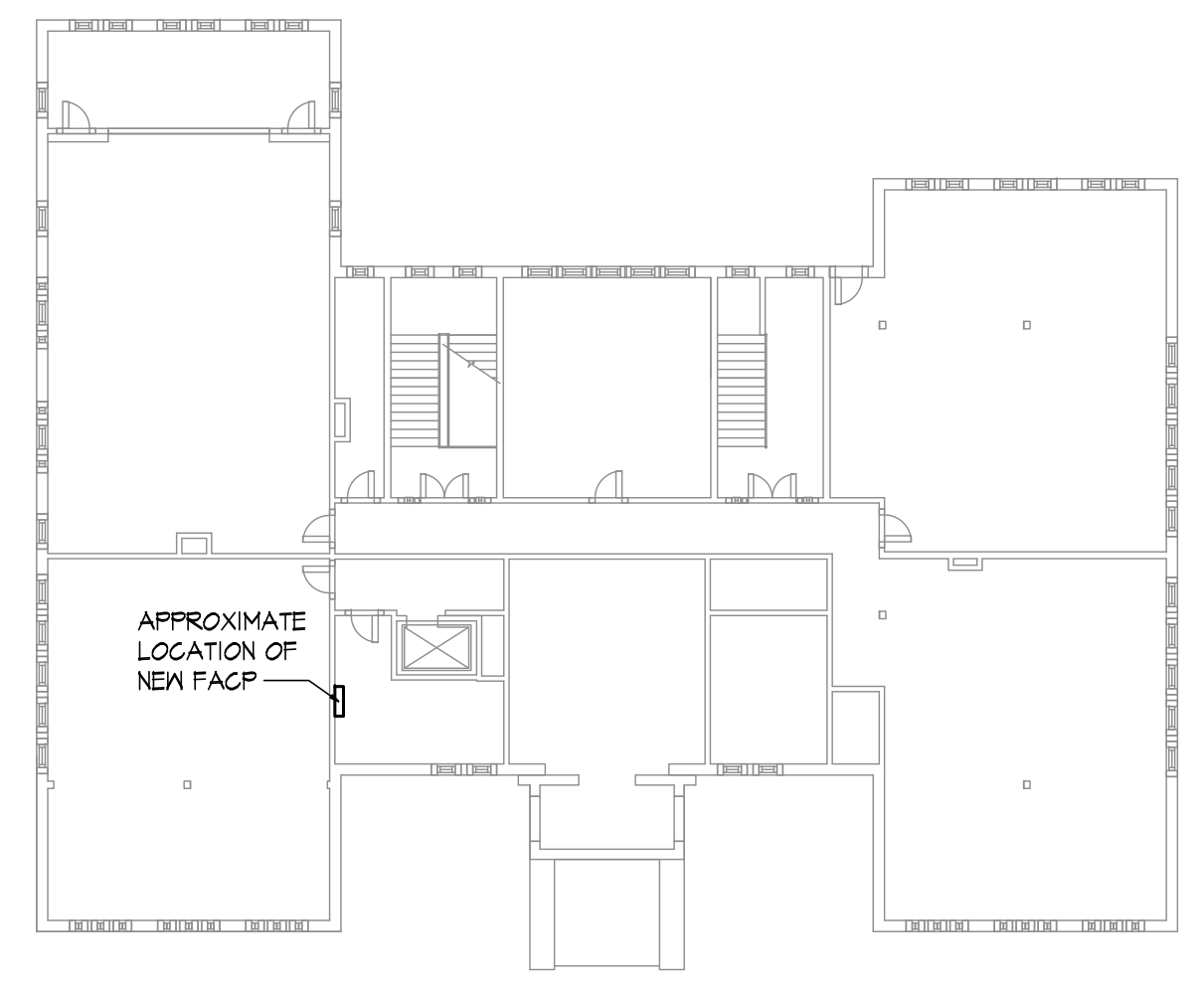
  

POLE #	SERVICE	VA LOAD			LOAD TYPE	WIRE SIZE	C.B.		WIRE SIZE	LOAD TYPE	VA LOAD			SERVICE	POLE #
		A	B	C			TRIP	POLE			A	B	C		
1	B01 - CONSOLE RECPTS	360			R	12	20	1	20	1	12	R	1080	B04 & B05 - RECPTS	2
3	B01 - PROJECTOR		360		MI	12	20	1	20	1	12	M	576	B08 - SCREENS	4
5	B01 - AUX PROJECTOR			360	MI	12	20	1	20	1	12	R	360	B08 - WALL RECPTS	6
7	B10 - LIGHTS						20	1	20	1	12	R	540	B08 - SE FURNITURE	8
9	B10 - LIGHTS						20	1	20	1	12	R	540	B08 - SOUTH FURNITURE	10
11	SP						20	1	20	1	12	R	540	B08 - SW FURNITURE	12
13	B11 - LIGHTS						20	1	20	1	12	R	540	B08 - WEST FURNITURE	14
15	B11 - LIGHTS						20	1	20	1	12	R	120	B08 - NW FURNITURE	16
17	SP						20	1	20	1	12	R	120	B08 - NORTH FURNITURE	18
19	B11 - LIGHTS						20	1	20	1	12	L	1184	B08 CLASSROOM L6TS	20
21	B01 CLASSROOM L6TS	1280			L	12	20	1	20	1	12	R	360	B08 - CONSOLE RECPTS	22
23	B01 SCREENS		576		M	12	20	1	20	1	12	L	800	C800, B13 - B15 L6TS	24
25	B02 & B02A-B02D L6TS	1024			L	12	20	1	20	1	12	L	442	B04-B04 L6TS	26
27	B12 - LIGHTS						20	1	20	1	12	MI	380	ATTIC - L6TS & RECPTS	28
29	UNKNOWN						20	1	20	1	12	MI	380	B08 - PROJECTOR	30
31	UNKNOWN						20	1	20	1	12	MI	380	B08 - AUX PROJECTOR	32
33	UNKNOWN						20	1	20	1	12	MI	380	UNKNOWN	34
35	UNKNOWN						20	1	20	1	12	MI	380	UNKNOWN	36
37	B01 & B01A - RECPTS	720			R	12	20	1	20	1	12	R	540	B02 - RECPTS	38
39	B02A & B02B - RECPTS		1080		R	12	20	1	20	1	12	R	1440	B02 - N. TV RECPTS	40
41	B02C & B02D - RECPTS			1080	R	12	20	1	20	1	12	R	1440	B02 - S. TV RECPTS	42



**NOTES:**  
 1. THIS DIAGRAM DOES NOT SHOW ALL FIRE ALARM DEVICES. RE. FLOOR PLANS FOR ACTUAL NUMBER AND LOCATION OF DEVICES ON 3RD FLOOR. FIELD VERIFY NUMBER AND LOCATION OF DEVICES ON THE 1ST AND 2ND FLOOR.

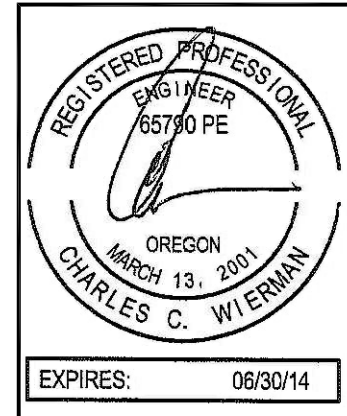
**1 TYPICAL FIRE ALARM RISER**  
 NOT TO SCALE



**1 FIRST FLOOR PLAN**  
 NOT TO SCALE

- FIRE ALARM SEQUENCE OF OPERATION:**
- WHEN A FIRE ALARM CONDITION IS DETECTED BY ANY OF THE SYSTEM ALARM INITIATING DEVICES, THE FOLLOWING FUNCTIONS SHALL OCCUR:
    - THE SYSTEM COMMON ALARM LED ON THE CPU MODULE SHALL FLASH. THE INTERNAL AUDIBLE TROUBLE DEVICE SHALL SOUND. ACKNOWLEDGEMENT OR SILENCING THE ALARM CONDITION SHALL SILENCE THE ALARM SIGNALS AND CAUSE FLASHING ALARM LED'S TO ILLUMINATE STEADY.
    - AN 80 CHARACTER BACK-LIT LCD DISPLAY SHALL INDICATE ALL APPLICABLE INFORMATION ASSOCIATED WITH THE ALARM CONDITION INCLUDING: ZONE, DEVICE TYPE, DIVIDE LOCATION, AND TIME OF ALARM. LOCATION AND ZONING MESSAGES SHALL BE CUSTOM FIELD PROGRAMMED TO RESPECTIVE PREMISES.
    - ANY REMOTE OR LOCAL ANNUNCIATOR LED'S ASSOCIATED WITH THE ALARM ZONE SHALL BE ILLUMINATED AS HEREIN SPECIFIED.
    - A THREE CHANNEL DIGITAL ALARM COMMUNICATOR SHALL BE INTEGRALLY PROVIDED AND TRANSMIT TROUBLE AND ALARM SIGNALS TO AN APPROVED REMOTE STATION (REMOTE STATION CONNECTION AND SERVICE PROVIDED BY OWNER).
    - ALL AUTOMATIC EVENTS PROGRAMMED TO THE ALARM POINT SHALL BE EXECUTED AND THE ASSOCIATED INDICATING DEVICES AND/OR OUTPUTS ACTIVATED. AS EACH INDICATING CIRCUIT OR CONTROL RELAY IS ACTIVATED, ITS ASSOCIATED 'ON' LED SHALL BE ILLUMINATED.
    - ACTIVATE ALL AUDIBLE/VISUAL ALARM DEVICES.
    - DE-ACTIVATE HVAC SYSTEMS OVER 2000 CFM.
    - DISPLAY SYSTEM STATUS CHANGES ON THE REMOTE ANNUNCIATOR.
    - TO BE DONE UNDER A SEPERATE CONTRACT: RECALL ELEVATORS TO GROUND FLOOR AS SPECIFIED HEREIN, OR TO THE ALTERNATE FLOOR IF THE ALARM CONDITION ORIGINATES ON THE GROUND FLOOR. EACH ELEVATOR LOBBY SHALL BE PROVIDED WITH A SMOKE DETECTOR. ACTIVATION OF THIS SMOKE DETECTOR SHALL RECALL THE RESPECTIVE ELEVATOR CARS TO THE GROUND FLOOR. IN THE EVENT OF A FIRE ON THE GROUND FLOOR, THE ELEVATOR CARS SHALL BE RECALLED TO LEVEL 2.
  - WHEN A SUPERVISORY CONDITION IS DETECTED BY THE FIRE ALARM CONTROL PANEL, THE FOLLOWING FUNCTIONS SHALL OCCUR:
    - THE FIRE ALARM CONTROL PANEL SUPERVISORY INDICATOR SHALL FLASH AND THE INTERNAL AUDIBLE DEVICE SHALL SOUND. ACKNOWLEDGMENT OF THE SUPERVISORY CONDITION SHALL SILENCE THE AUDIBLE DEVICE AND CAUSE THE SUPERVISORY INDICATOR TO ILLUMINATE STEADY.
    - THE 80 CHARACTER LIQUID CRYSTAL DISPLAY SHALL DISPLAY ALL APPLICABLE INFORMATION ASSOCIATED WITH THE RESPECTIVE SUPERVISORY CONDITION.
    - ACTIVATE A SUPERVISORY CONTACT CLOSURE TO INTERFACE WITH THE OWNER PROVIDED CENTRAL STATION MONITORING SERVICE.
    - DISPLAY THE SYSTEM STATUS CHANGE ON THE REMOTE ANNUNCIATOR(S).

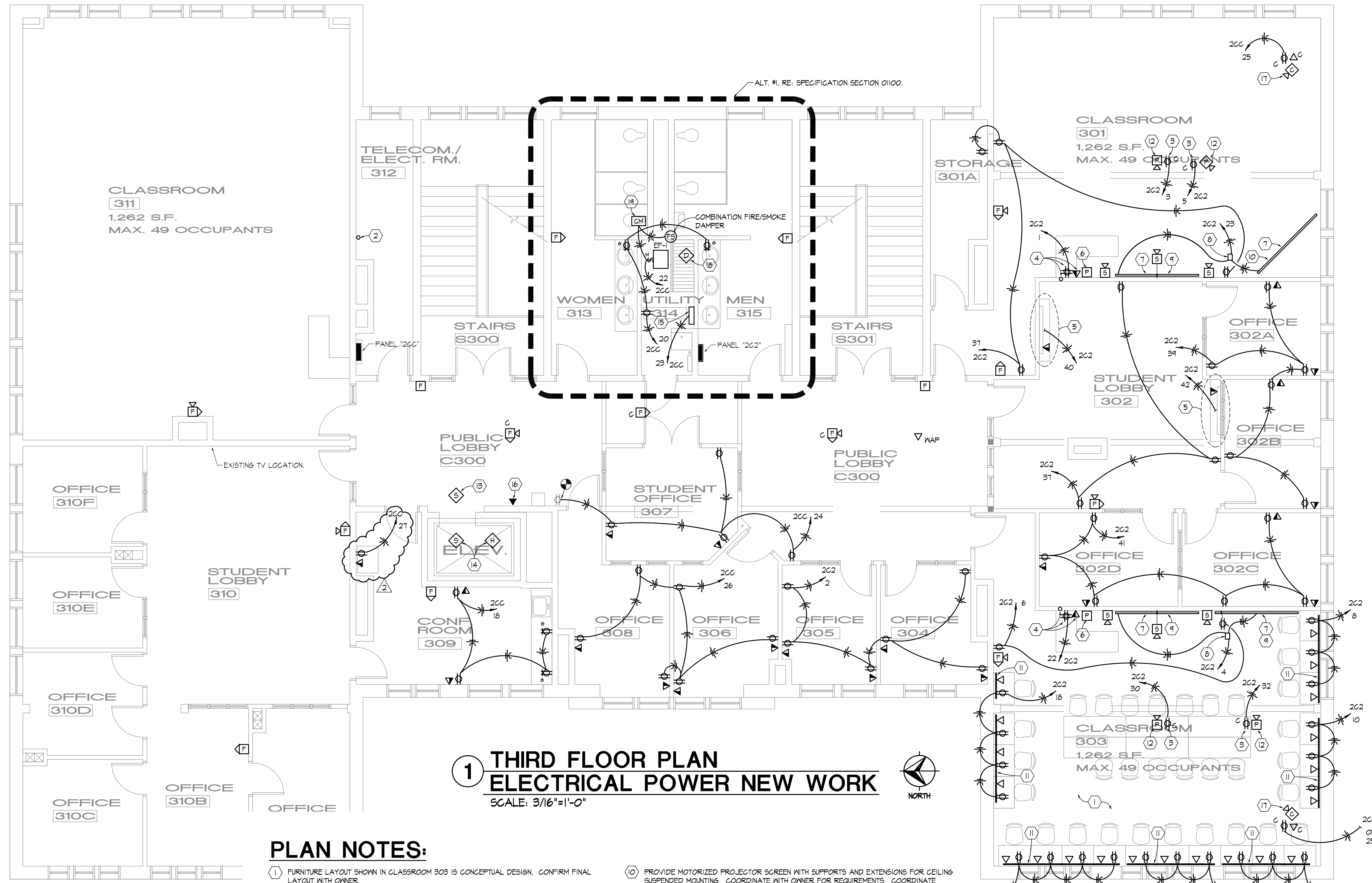
DATE:	DWN. BY:	CHK. BY:
03/14/2013	DAB	CCN
<b>REVISIONS</b>		
04/09/2013 - APPENDIX 2	2	



SHEET NUMBER  
**E0.1**

DRAWING TYPE  
 ISSUED FOR BID  
 CAD FILE

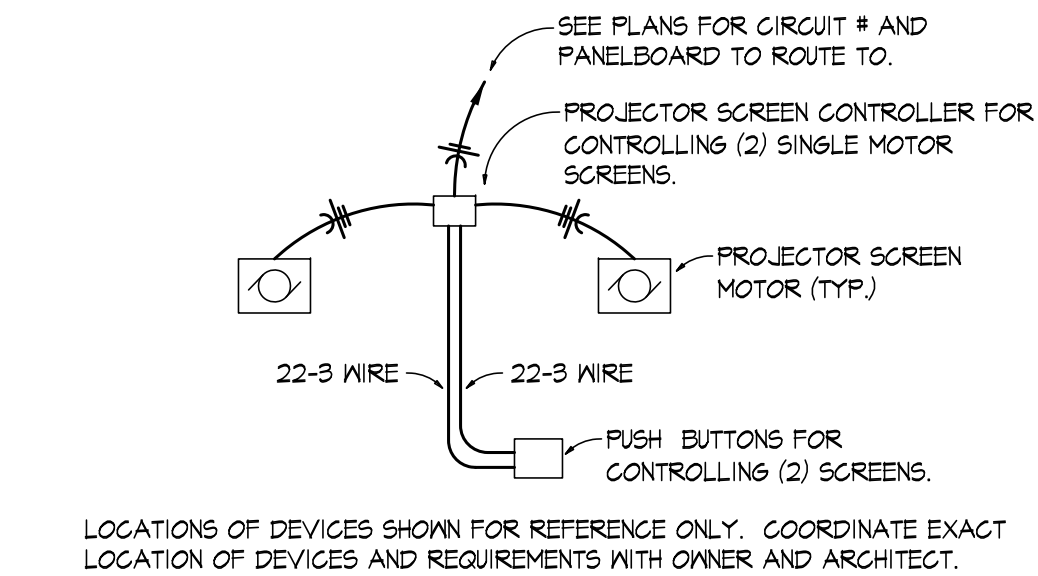
PROJECT NO.  
 12-3390-1



**1 THIRD FLOOR PLAN  
ELECTRICAL POWER NEW WORK**  
SCALE: 3/16"=1'-0"

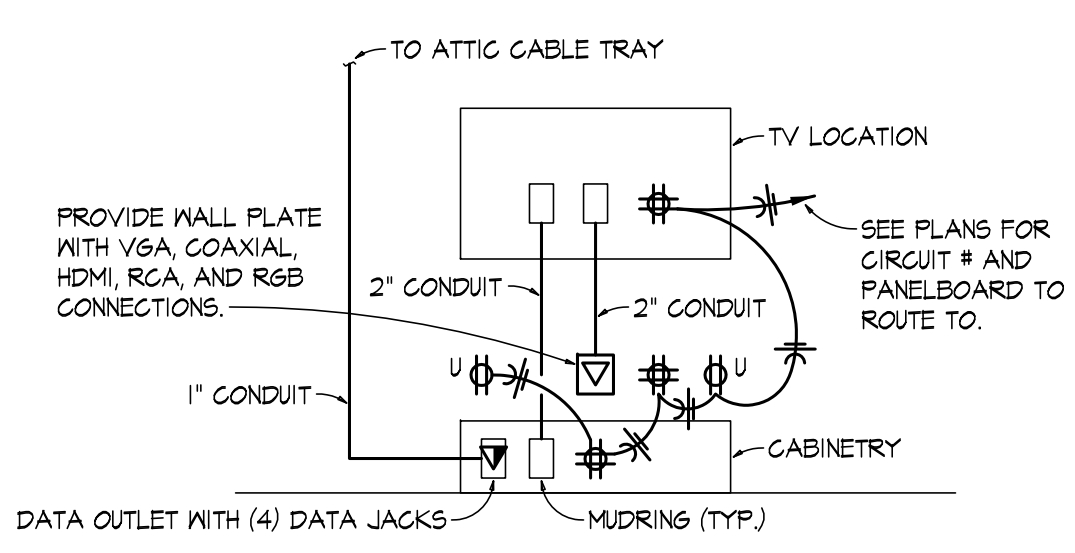
**PLAN NOTES:**

- 1) FURNITURE LAYOUT SHOWN IN CLASSROOM 303 IS CONCEPTUAL DESIGN. CONFIRM FINAL LAYOUT WITH OWNER.
- 2) PROVIDE 4" CONDUIT FOR DATA CABLES DOWN FROM EXISTING ATTIC CABLE TRAY TO IDF LOCATED IN TELECOM/ELECT. RM. 312. PROVIDE CONDUIT WITH FULL STRING AND BUSHINGS. LOCATION SHOWN FOR REFERENCE ONLY. FIELD VERIFY EXACT LOCATION.
- 3) PROVIDE AND INSTALL NEW CEILING MOUNTED RECEPTACLE FOR NEW CEILING MOUNTED PROJECTOR. COORDINATE EXACT LOCATION WITH OWNER AND ARCHITECT.
- 4) PROVIDE MUDRING AT INSTRUCTOR CONSOLE AND 2" CONDUIT UP WALL INTO ATTIC FOR AUDIO, VISUAL, & DATA CABLING FOR PROJECTOR. PROVIDE CONDUIT WITH FULL STRING & BUSHINGS. PROVIDE DUPLEX RECEPTACLE AND DATA OUTLET WITH (4) DATA JACKS AT INSTRUCTOR CONSOLE. COORDINATE EXACT LOCATION OF DEVICES AND REQUIREMENTS WITH OWNER AND ARCHITECT.
- 5) RE: 3E2 FOR TV LOCATION DETAIL. SEE STUDENT LOBBY 310 FOR SIMILAR EXISTING INSTALLATION.
- 6) PUSH BUTTONS FOR CONTROLLING (2) PROJECTOR SCREENS. RE: 2E2 FOR SCREEN CONTROLLER DETAIL.
- 7) PROVIDE AND INSTALL NEW MOTORIZED PROJECTOR SCREEN. PROVIDE DA-LITE 60"x96" (16:10 WIDE FORMAT) COSMOPOLITAN ELECTROL SCREEN WITH MATTE WHITE SCREEN SURFACE. COORDINATE EXACT LOCATION AND MOUNTING HEIGHT OF SCREENS WITH OWNER AND ARCHITECT. PROVIDE ALL NECESSARY HARDWARE FOR WALL OR CEILING MOUNTING. RE: 2E2 FOR SCREEN CONTROLLER DETAIL.
- 8) PROJECTOR SCREEN CONTROLLER FOR CONTROLLING TWO SINGLE MOTOR SCREENS. PROVIDE DA-LITE SCB-102. COORDINATE CONTROLLER MOUNTING LOCATION WITH OWNER. RE: 2E2 FOR SCREEN CONTROLLER DETAIL.
- 9) PROVIDE MOTORIZED PROJECTOR SCREEN WITH EXTENSION WALL BRACKETS FOR MOUNTING SCREEN AWAY FROM WALL IN ORDER TO AVOID WHITEBOARD. COORDINATE EXACT LOCATION AND MOUNTING HEIGHT OF SCREENS WITH OWNER AND ARCHITECT. SEE CLASSROOM 311 FOR EXAMPLE INSTALLATION.
- 10) PROVIDE MOTORIZED PROJECTOR SCREEN WITH SUPPORTS AND EXTENSIONS FOR CEILING SUSPENDED MOUNTING. COORDINATE WITH OWNER FOR REQUIREMENTS. COORDINATE EXACT LOCATION AND MOUNTING HEIGHT OF SCREENS WITH OWNER AND ARCHITECT. SEE CLASSROOM 311 FOR EXAMPLE INSTALLATION.
- 11) RECEPTACLES AND DATA OUTLETS TO BE LOCATED IN NEW FURNITURE. ELECTRICAL WIRING AND DATA CABLING TO BE ROUTED IN NEW FURNITURE AND UP TROUGH WALL IN CONDUIT. FOR EACH GROUP OF 3 OR 4 COMPUTERS; ROUTE (1) 1" CONDUIT FOR DATA CABLING UP TO THE EXISTING ATTIC CABLE TRAY. PROVIDE CONDUIT WITH BUSHINGS & FULL STRING. PROVIDE A WHIP BETWEEN THE FURNITURE AND THE CONDUIT IN THE WALL FOR BOTH POWER AND DATA. PAINT AND PATCH WALLS AS REQUIRED TO MATCH EXISTING.
- 12) PROVIDE AND INSTALL PROJECTOR CEILING MOUNTING HARDWARE, INCLUDING EXTENSION COLUMN AND CEILING PLATE. PROVIDE ALL NECESSARY HARDWARE FOR COMPLETE SYSTEM. COORDINATE AND CONFIRM HARDWARE FINISH, MODEL, AND MANUFACTURER TO BE USED WITH BUILDING OWNER. COORDINATE AND CONFIRM PROJECTOR LOCATION AND MOUNTING HEIGHT WITH BUILDING OWNER.
- 13) SMOKE DETECTOR FOR ELEVATOR RECALL.
- 14) PROVIDE & INSTALL NEW HEAT AND SMOKE DETECTOR AT TOP OF ELEVATOR SHAFT.
- 15) FIRE ALARM REMOTE POWER SUPPLY (NAC).
- 16) RE-ROUTE CABLING FROM EXISTING COURTESY PHONE OUTLET TO TELECOM/ELECT. RM. 312.
- 17) CEILING MOUNTED SECURITY CAMERA AND MOUNTING BRACKET TO BE OWNER FURNISHED AND CONTRACTOR INSTALLED. COORDINATE AND CONFIRM FINAL CAMERA LOCATION WITH BUILDING OWNER. PROVIDE CEILING MOUNTED RECEPTACLE AND DATA OUTLET.
- 18) PROVIDE AND INSTALL NEW DUCT DETECTOR. CONNECT TO NEW FIRE ALARM PANEL. DETECTOR TO CONTROL NEW COMBINATION FIRE/SMOKE DAMPER PER THE OREGON FIRE CODE AND NFPA 72. RE: MECHANICAL DRAWINGS FOR LOCATIONS.
- 19) FIRE ALARM CONTROL MODULE. IF SMOKE IS DETECTED BY THE DUCT DETECTOR THE COMBINATION FIRE/SMOKE DAMPER SHALL CLOSE.



**2 SCREEN CONTROLLER DETAIL**  
NOT TO SCALE

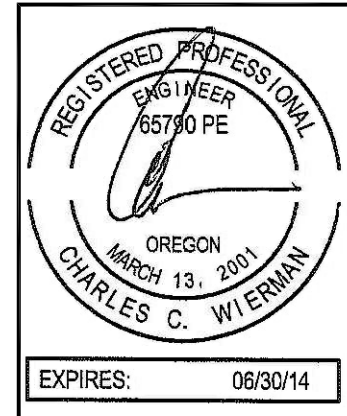
**GENERAL NOTES:**  
1) ALL FIRE ALARM DEVICES SHOWN ON THIS SHEET SHALL BE NEW AND CONNECTED TO THE NEW FIRE ALARM SYSTEM.  
2) PROVIDE SURFACE MOUNTED WIRING FOR ALL DEVICES TO BE LOCATED ON SOLID WALLS (SUCH AS CONCRETE WALLS). PAINT CONDUIT TO MATCH NEW WALL FINISH.



LOCATIONS OF DEVICES SHOWN FOR REFERENCE ONLY. COORDINATE EXACT LOCATION OF DEVICES AND REQUIREMENTS WITH OWNER AND ARCHITECT.

**3 TV LOCATION DETAIL**  
NOT TO SCALE

DATE	DWN. BY	CHK. BY
03/14/2013	DAB	CCM
REVISIONS		
04/09/2013 - APPENDIX 2		2



SHEET NUMBER	<b>E2</b>
DRAWING TYPE	ISSUED FOR BID
	CAD FILE
PROJECT NO.	12-3390-1