

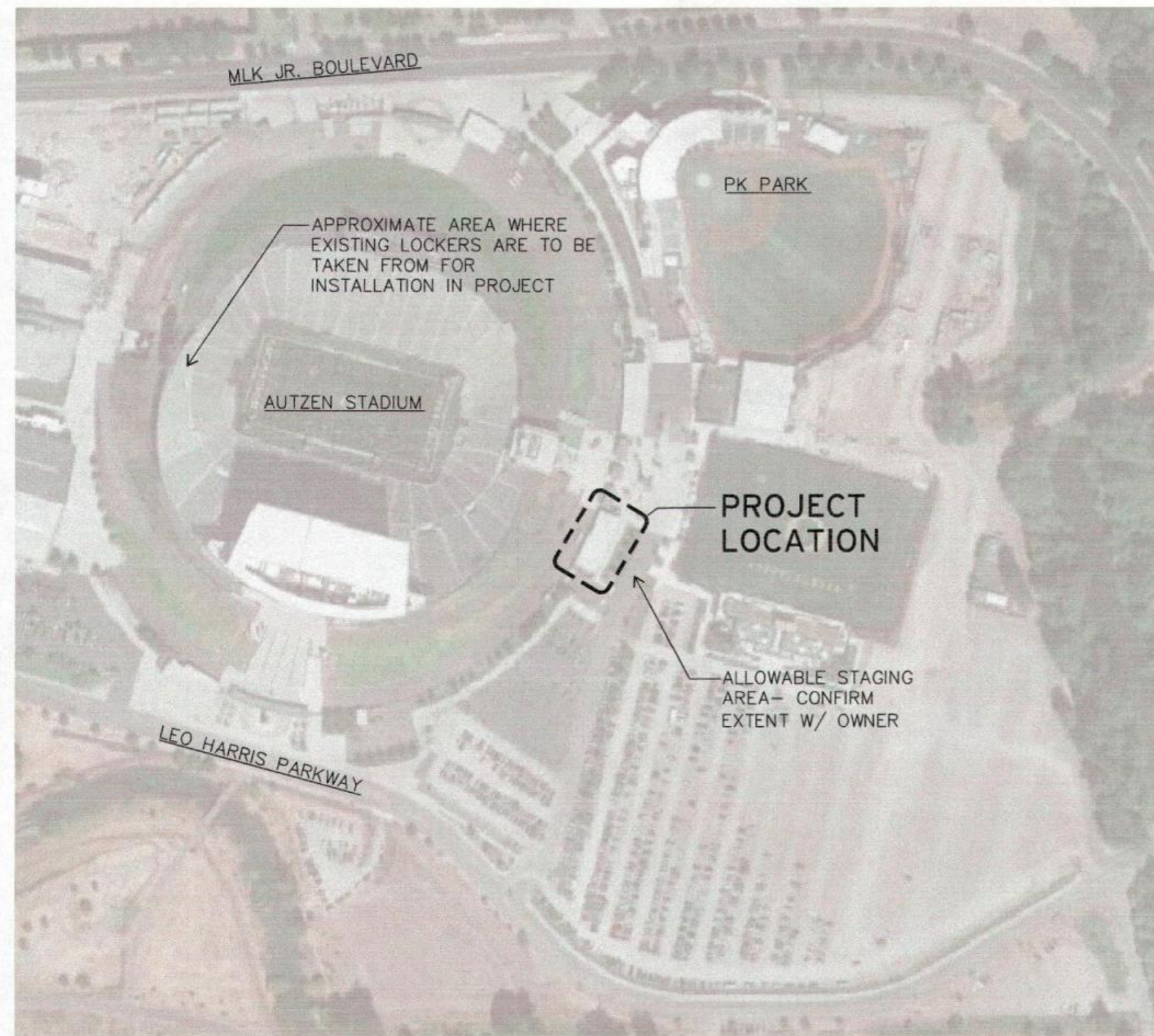
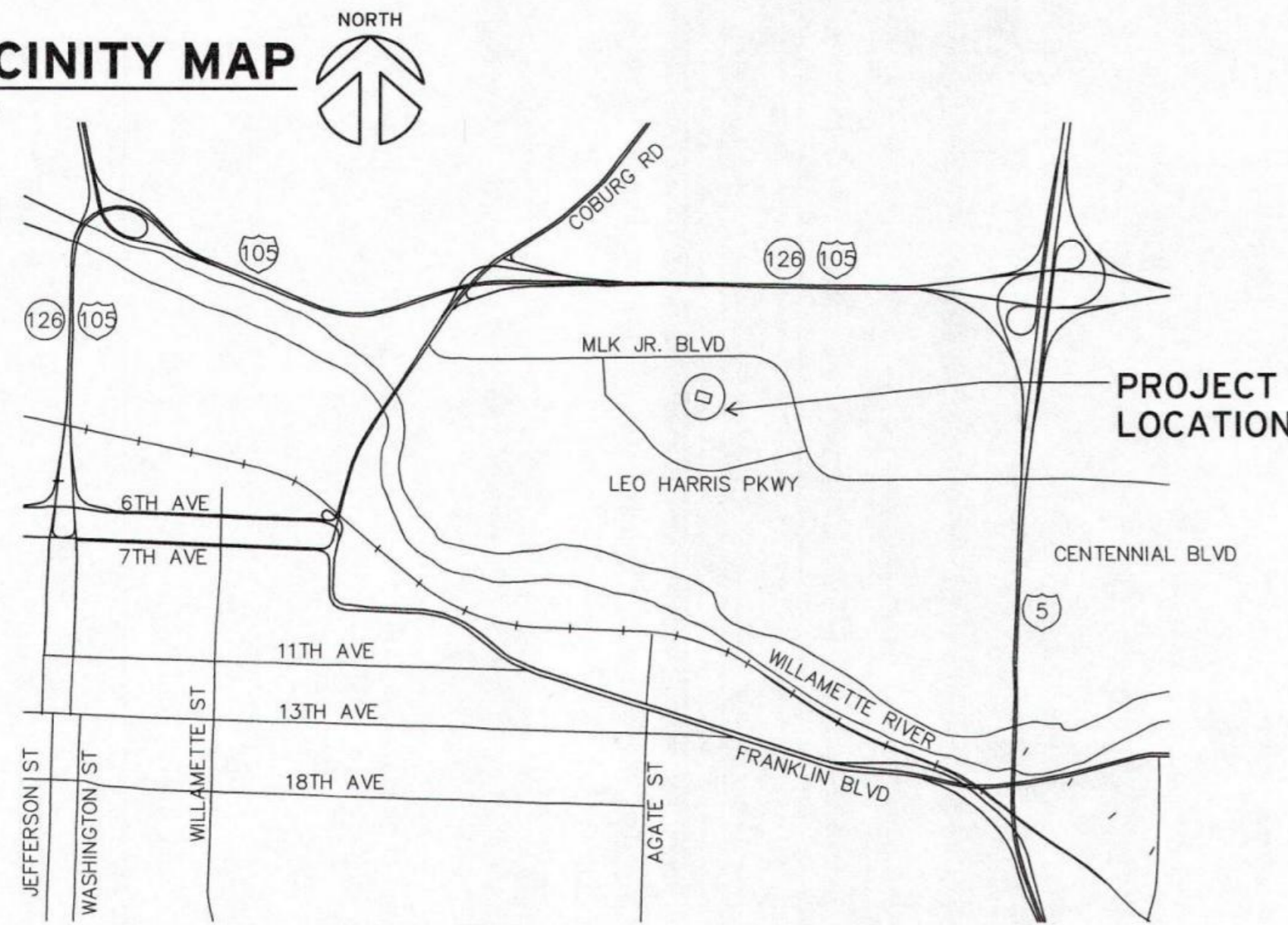
UO AUTZEN VISITOR LOCKER ROOM RENOVATION

Autzen East Gate, Building 220
2775 Martin Luther King Jr. Boulevard, Eugene, OR 97401

UO Capital Project #CP13-087

VICINITY MAP

N.T.S.



A
G1.0
 AUTZEN STADIUM MAP
 not to scale

DESIGN TEAM

OWNER:
 UNIVERSITY OF OREGON

CAMPUS OPERATIONS/CAPITAL CONSTRUCTION
 1276 UNIVERSITY OF OREGON
 EUGENE, OR 97403-1276
 541-346-5276
 541-346-6769 (FAX)
 CONTACT: BRUCE BUDZIK

ATHLETICS DEPARTMENT
 2727 LEO HARRIS PARKWAY
 EUGENE, OR 97401
 541-346-5509
 541-346-5031 (FAX)
 CONTACT: BOB BEALS

ARCHITECT:
 ROBERTSON/SHERWOOD ARCHITECTS pc
 132 E. BROADWAY, SUITE 540
 EUGENE, OR 97401
 541-342-8077
 541-345-4302 (FAX)
 CONTACT: SCOTT STOLARCZYK, AIA

M/E/P ENGINEERS:
 SYSTEMS WEST ENGINEERS
 411 HIGH STREET
 EUGENE, OR 97401
 541-342-7210
 541-342-7220 (FAX)
 PLUMBING CONTACT: STEVEN SAVICH
 MECHANICAL CONTACT: BRIAN JACOBY
 ELECTRICAL CONTACT: JEFF GRAPER

SHEET INDEX

- G1.0 PROJECT INFORMATION
- A1.1 DEMOLITION PLAN, FLOOR PLAN
- A2.1 SCHEDULES, SECTIONS, DETAILS
- M0.1 LEGEND
- M0.2 SCHEDULES
- M1.0 FOUNDATION PLAN- PLUMBING
 GROUND FLOOR PLAN- FIRE PROTECTION
- M1.1 GROUND FLOOR PLAN- PLUMBING
- M1.2 GROUND FLOOR PLAN- MECHANICAL
- M5.0 DETAILS AND DIAGRAMS
- E0.1 LEGEND AND SCHEDULE
- E1.1 FLOOR PLAN- LIGHTING
- E1.2 FLOOR PLAN- POWER AND COMMUNICATION PLAN

DEFERRED SUBMITTALS

THE FOLLOWING ITEMS WILL BE SUBMITTED AS A DEFERRED SUBMITTALS. THESE SUBMITTALS ARE TO BE PREPARED BY SUBCONTRACTOR RESPONSIBLE FOR THE WORK AND SUBMITTED TO THE ARCHITECT AND CITY FOR APPROVAL PRIOR TO THE START OF INSTALLATION. REFER TO THE PROJECT MANUAL FOR ADDITIONAL INFORMATION ON REQUIREMENTS FOR EACH SUBMITTAL:

1. SEISMIC RESTRAINTS FOR PIPING, DUCTWORK AND MECHANICAL EQUIPMENT. DEFERRED SUBMITTAL DOCUMENTATION TO INCLUDE ENGINEERING & SHOP DRAWINGS FOR SEISMIC RESTRAINT SYSTEMS, ASSEMBLIES AND COMPONENTS.
2. AUTOMATIC FIRE SPRINKLERS. DEFERRED SUBMITTAL DOCUMENTATION TO INCLUDE PIPE SIZING CALCULATIONS AND SYSTEM DRAWINGS INDICATING PIPE RUNS, PIPE SIZES, VALVES, FLOW SWITCHES, AND HEAD LOCATIONS. DESIGN TO BE IN CONFORMANCE WITH NFPA 13.
3. ADDRESSABLE FIRE ALARM SYSTEM, INCLUDING SIGNAL INITIATING DEVICES, WIRING SYSTEM AND ALL ACCESSORY DEVICES, ETC. DEFERRED SUBMITTAL DOCUMENTATION TO INCLUDE SINGLE LINE DIAGRAMS, LOAD CALCULATIONS AND PRODUCT LITERATURE.

ABBREVIATIONS

- BO BOTTOM OF
- CG CORNER GUARD
- CJ CONTROL JOINT
- CL CENTER LINE
- CONC CONCRETE
- CT CERAMIC TILE
- (E) EXISTING
- ELEC ELECTRICAL
- EQ EQUAL
- FD FLOOR DRAIN
- FE FIRE EXTINGUISHER
- FO FACE OF
- GB GRAB BAR
- GYP BD GYPSUM BOARD
- HM HOLLOW METAL
- HORIZ HORIZONTAL
- MAX MAXIMUM
- MECH MECHANICAL
- MIN MINIMUM
- (N) NEW
- NIC NOT IN CONTRACT
- OC ON CENTER
- OF/CI OWNER FURNISHED/
CONTRACTOR INSTALLED
- OF/OI OWNER FURNISHED/
OWNER INSTALLED
- PLAM PLASTIC LAMINATE
- PTD PAPER TOWEL DISPENSER
- REQ'D REQUIRED
- (RL) RELOCATED
- SD SOAP DISPENSER
- SIM SIMILAR
- SM SHEET METAL
- STL STEEL
- TO TOP OF
- TYP TYPICAL
- VERT VERTICAL
- W WITH

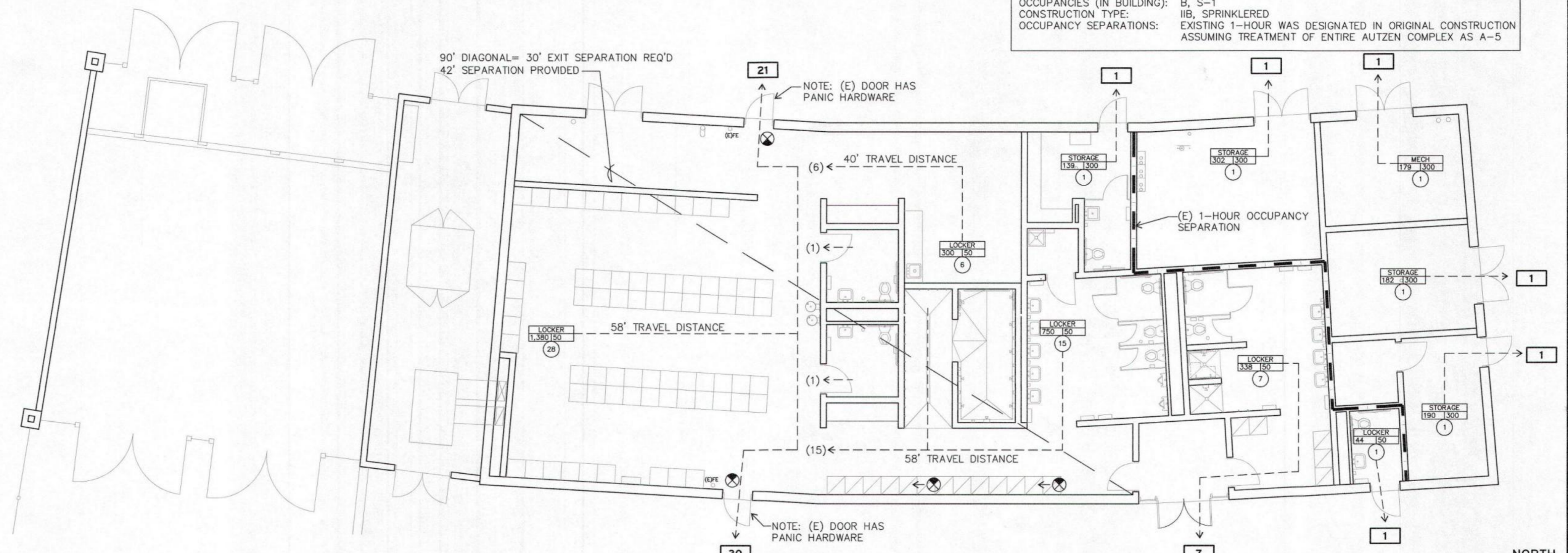
SYMBOLS LEGEND

- BUILDING SECTION
- INTERIOR ELEVATION
- DETAIL TAG
- ROOM NUMBER
- KEYED NOTE
- DOOR TYPE TAG

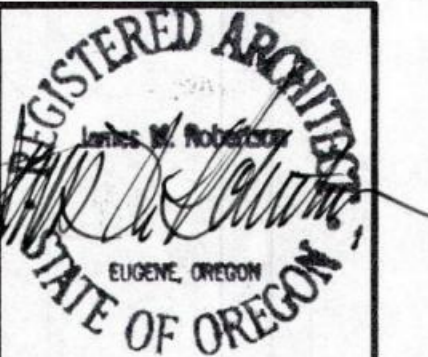
EXITING PLAN LEGEND

- REPRESENTS THE ENTIRE OCCUPANT LOAD EXITING THROUGH THIS EXIT DOOR
- OCCUPANT LOAD FROM A ROOM OR SPACE
- EXIT SIGN
- OCCUPANCY STATISTICS**
- ROOM USE PER TABLE 1004.1.2
- OCCUPANT LOAD FACTOR
- NUMBER OF OCCUPANTS
- AREA IN SQUARE FEET

CODE SUMMARY:
 OCCUPANCIES (IN BUILDING): B, S-1
 CONSTRUCTION TYPE: IIB, SPRINKLERED
 OCCUPANCY SEPARATIONS: EXISTING 1-HOUR WAS DESIGNATED IN ORIGINAL CONSTRUCTION ASSUMING TREATMENT OF ENTIRE AUTZEN COMPLEX AS A-5



B
G1.0
 EXITING PLAN
 1/8" = 1'-0"



Robertson Sherwood Architects pc
 www.robertsonsherwood.com
 P 541 | 342.8077
 F 541 | 345.4302

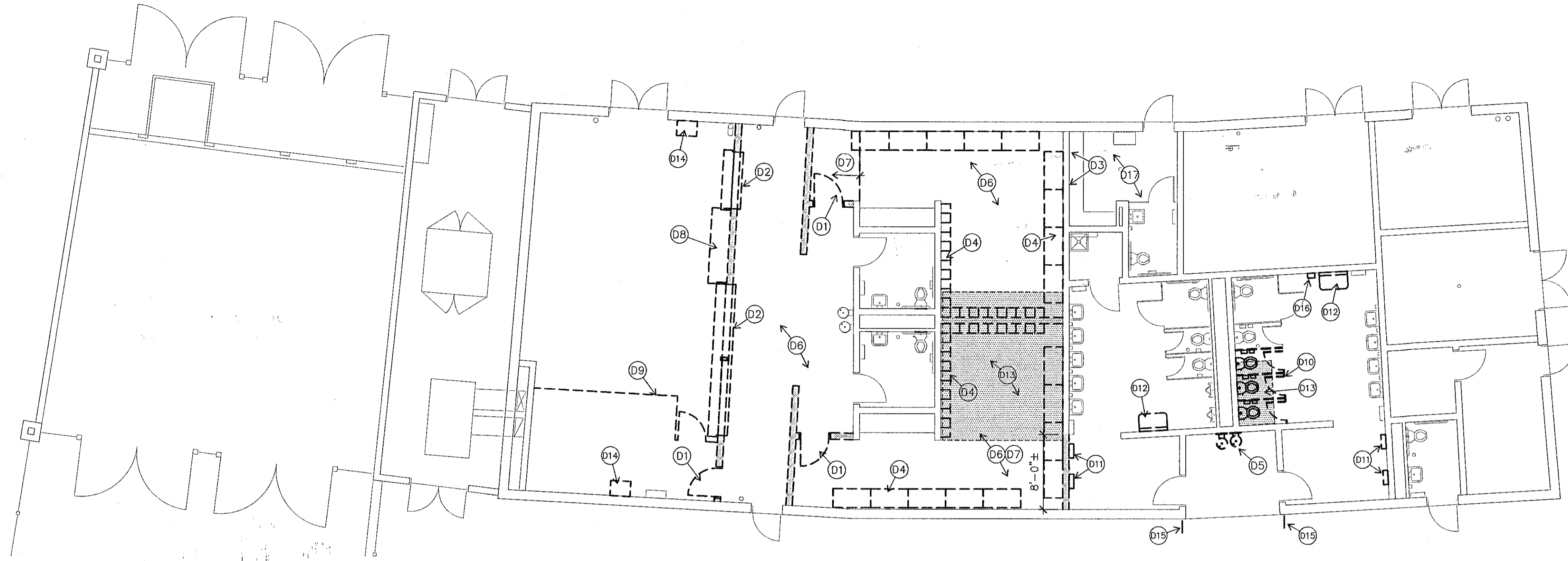
Autzen East Gate, Building 220
 2775 Martin Luther King Jr. Boulevard
 Eugene, Oregon 97401

UO Autzen Visitor Locker Room Renovation

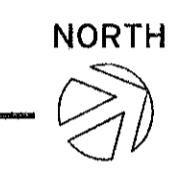
PROJECT INFORMATION

Drawn By: SS
 Checked: [Signature]
 Date: 15 MARCH 2013
 Project: 1227

G1.0



A
A1.1
DEMOLITION PLAN
1/8" = 1'-0"



GENERAL PLAN NOTES

- A. FIELD VERIFY ALL CONDITIONS PRIOR TO BEGINNING WORK. IMMEDIATELY NOTIFY ARCHITECT UPON DISCOVERY OF ANY DISCREPANCIES BETWEEN DRAWINGS AND FIELD CONDITIONS.
- B. DIMENSIONS ARE TO GRIDLINE OR FACE OF FINISH, U.O.N.
- C. DEMOLITION PLAN DESCRIBES IN GENERAL REQUIRED DEMOLITION WORK. CONTRACTOR IS RESPONSIBLE FOR ALL DEMOLITION REQUIRED TO COMPLETE NEW WORK, AS SHOWN ON DRAWINGS OR AS SPECIFIED.
- D. SPECIFIC AREAS OF DEMOLITION WILL REQUIRE REFERENCE TO OTHER SHEETS, OR DETAILS TO DETERMINE DIMENSIONAL EXTENT OF WORK.
- E. REFER TO MECHANICAL AND ELECTRICAL DRAWINGS FOR ADDITIONAL DEMOLITION AND NEW WORK INFORMATION.
- F. PROTECT ALL EXISTING FINISHES, CASEWORK, AND EQUIPMENT TO REMAIN.
- G. PATCH EXISTING SURFACES AFFECTED BY DEMOLITION WORK TO MATCH ADJACENT, U.O.N. FINISH AS SCHEDULED.
- H. PATCH HOLES IN EXISTING SLAB DUE TO DEMOLITION WORK, AND GRIND DOWN EXISTING CMU WALLS TAKEN OUT TO PROVIDE FOR SMOOTH TRANSITION TO EXISTING SLAB.
- I. PATCH SINGLE PLY ROOF MEMBRANE AS REQUIRED AT NEW ROOF PENETRATIONS. REFER TO MECHANICAL DRAWINGS FOR PENETRATION LOCATIONS.

KEYED DEMOLITION PLAN NOTES

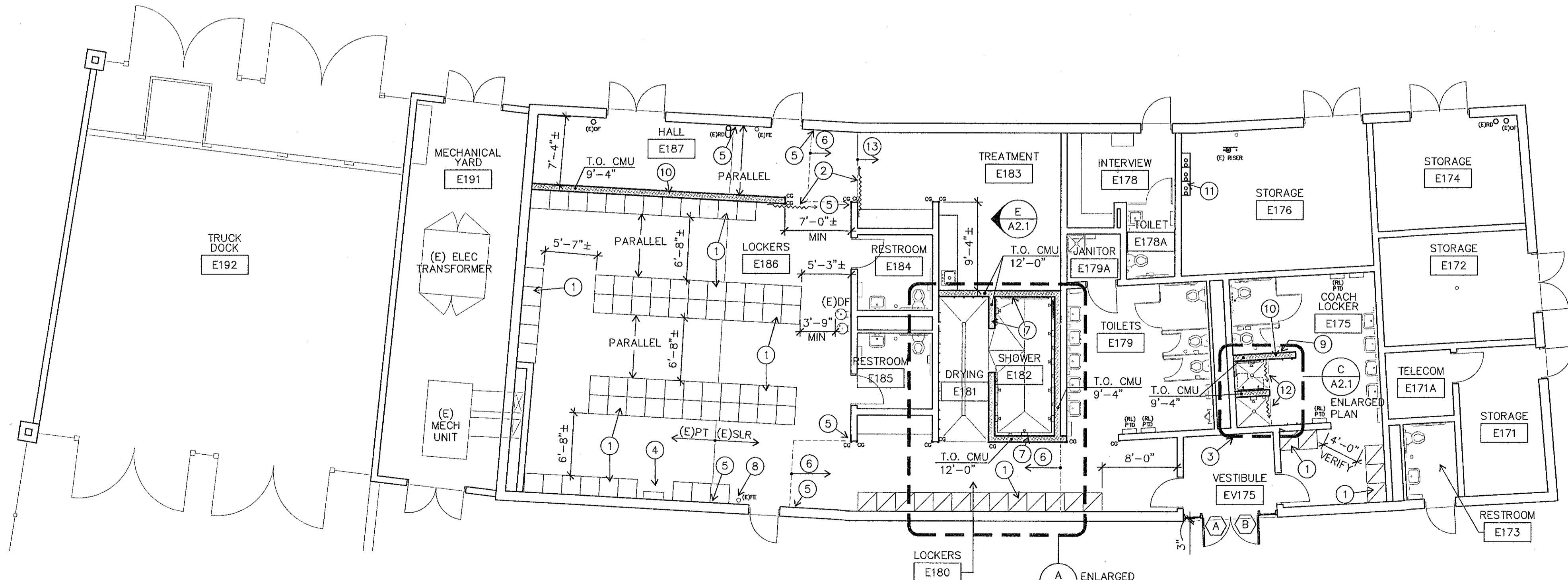
- D1 REMOVE DOOR AND FRAME.
- D2 REMOVE OVERHEAD COILING DOOR AND CMU WALL BELOW.
- D3 CUT OPENING IN CMU WALL FOR NEW DUCTWORK.
- D4 REMOVE LOCKERS AND LOCKER BASES, TYPICAL THIS ROOM. LOCKERS TO BE SALVAGED BACK TO OWNER. RELOCATE TO AREA IN AUTZEN STADIUM AT OWNERS DIRECTION.
- D5 REMOVE DRINKING FOUNTAIN.
- D6 REMOVE ACOUSTICAL CEILING PANELS, SUSPENDED CEILING GRID, AND GYPSUM BOARD SOFFITS THIS ROOM.
- D7 REMOVE VINYL COMPOSITION TILE FLOORING THIS ROOM.
- D8 REMOVE CASEWORK.
- D9 REMOVE CHAIN LINK FENCING.
- D10 REMOVE WATER CLOSETS (3), TOILET PARTITIONS, AND TOILET ACCESSORIES. WATER CLOSETS AND TOILET ACCESSORIES TO BE RETURNED TO OWNER.
- D11 REMOVE PAPER TOWEL DISPENSERS AND SALVAGE FOR REINSTALLATION.
- D12 REMOVE BABY CHANGE STATION AND RETURN TO OWNER.
- D13 STIPPLED AREA INDICATES APPROXIMATE EXTENT OF SLAB REMOVAL (6" CONCRETE) FOR NEW UNDERSLAB PLUMBING AND NEW SLOPED FLOORS AT SHOWERS.
- D14 REMOVE WALL MOUNTED TV BRACKET.
- D15 REMOVE WALL MOUNTED RESTROOM SIGN.
- D16 REMOVE SANITARY NAPKIN DISPENSER AND RETURN TO OWNER.
- D17 REMOVE GYPSUM BOARD CEILING THIS ROOM.

WALL SCHEDULE

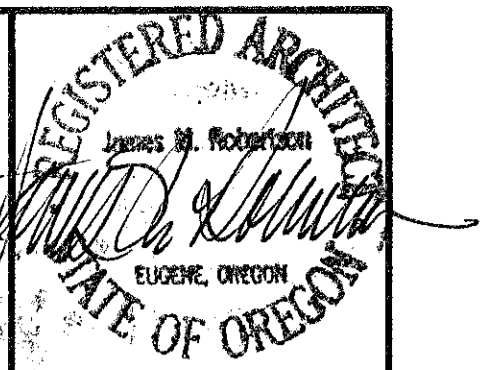
- EXISTING 8" CMU WALL
- TYPICAL NEW WALL:
 - 8" CMU
 - WALL BASE: #4x24" DOWELS AT 24" O.C., WITH DOWEL SET 4" INTO (E) SLAB WITH EPOXY ADHESIVE
 - TYPICAL VERTICAL REINFORCING: #4 AT 24" O.C.
 - TYPICAL HORIZONTAL REINFORCING: #4 AT 32" O.C.
 - HORIZONTAL BOND BEAMS (W/ 2-#6 BARS) AT 48" O.C. AND TOP AND BOTTOM OF WALL
 - PROVIDE ADDITIONAL REINFORCING AS SHOWN ON F/A2.1

KEYED FLOOR PLAN NOTES

- 1 EXISTING 2'-0"x2'-0" LOCKERS SALVAGED FROM EXISTING LOCKER ROOM AT WEST SIDE OF AUTZEN. CONTRACTOR RESPONSIBLE FOR REMOVAL OF LOCKERS FROM EXISTING SPACE AND REINSTALLATION IN NEW SPACE. SET ON NEW 6" HIGH CONCRETE CURB. REFER TO G/A2.1 FOR CURB DETAIL.
- 2 CURTAIN AND CURTAIN ROD.
- 3 FULLY GROUT HOLES IN WALL FROM REMOVED DRINKING FOUNTAIN.
- 4 EXISTING SIEMENS CONTROL PANEL TO REMAIN.
- 5 GROUT FULL EXISTING CMU BLOCK WITH CELLS CUT OPEN DURING DEMOLITION. FINISH FACE OF GROUT TO APPROXIMATE FACE OF CMU.
- 6 NEW SEALER ON EXISTING CONCRETE SLAB WHERE VINYL COMPOSITION TILE WAS REMOVED.
- 7 AT TOP OF CMU WALL, INSTALL 3-5/8" METAL STUDS AT 16" O.C., CENTERED ON CMU. PROVIDE (1) LAYER 5/8" GYPSUM BOARD ONE SIDE (BOTH SIDES AT WALL SEPARATING DRYING E181 FROM TREATMENT E183).
- 8 REMOUNT EXISTING FIRE EXTINGUISHER TO WALL.
- 9 MODIFY TOILET PARTITION OVERHEAD BRACE TO CONNECT TO NEW CMU WALL.
- 10 PROVIDE 2" CMU WALL CAP AT TOP OF WALL.
- 11 NEW TANKLESS WATER HEATERS. REFER TO MECHANICAL.
- 12 SHOWER CURTAIN AND CURTAIN ROD.
- 13 EXISTING VCT FLOORING TO REMAIN.



B
A1.1
FLOOR PLAN
1/8" = 1'-0"



Autzen East Gate, Building 220
2775 Martin Luther King Jr. Boulevard
Eugene, Oregon 97401

Robertson Sherwood Architects pc
www.robertsonsherwood.com
P 541 342.8077
F 541 345.4302
132 East Broadway, Suite 540
Eugene, Oregon 97401
UO Autzen Visitor Locker Room Renovation

DEMOLITION PLAN
FLOOR PLAN

Drawn By SS
Checked
Date 15 MARCH 2013
Project 1227

A1.1

FINISH SCHEDULE														
NO.	ROOM	FLOOR		BASE		WALLS				CEILING			NOTES	
		MTL	FIN	MTL	FIN	NORTH	EAST	SOUTH	WEST	SYS	FIN	HGT		
E171	STORAGE	(E) CONC	---	---	---	(E) CMU	---	(E) CMU	---	(E) CMU	---	---	12'-0"	
E171A	TELECOM	(E) CONC	---	---	---	(E) CMU	---	(E) CMU	---	(E) CMU	---	---	12'-0"	
E172	STORAGE	(E) CONC	---	---	---	(E) CMU	---	(E) CMU	---	(E) CMU	---	---	12'-0"	
E173	RESTROOM	(E) CONC	---	---	---	(E) CMU	---	(E) CMU	---	(E) CMU	---	(E) GB	8'-6"	
E174	STORAGE	(E) CONC	---	---	---	(E) CMU	---	(E) CMU	---	(E) CMU	---	---	12'-0"	
E175	COACH LOCKER	(E) CONC	CT	---	---	(E) CMU	EN	(E) CMU	EN	(E) CMU	EN	(E) GB	8'-9"	①②
E175V	VESTIBULE	(E) CONC	---	---	---	(E) CMU	EN	---	---	(E) CMU	EN	(E) GB	9'-4"	
E176	STORAGE	(E) CONC	---	---	---	(E) CMU	---	(E) CMU	---	(E) CMU	---	---	12'-0"	
E178	INTERVIEW	(E) CONC	---	---	---	(E) CMU	---	(E) CMU	---	(E) CMU	---	---	12'-0"	
E178A	TOILET	(E) CONC	---	---	---	(E) CMU	---	(E) CMU	---	(E) CMU	---	---	12'-0"	
E179	TOILETS	(E) CONC	---	---	---	(E) CMU	EN	(E) CMU	EN	(E) CMU	EN	---	12'-0"	
E179A	JANITOR	(E) CONC	---	---	---	(E) CMU	---	(E) CMU	---	(E) CMU	---	(E) GB	8'-6"	
E180	LOCKERS	(E) CONC	(E)	---	---	(E) CMU	EN	---	---	(E) CMU	EN	---	12'-0"	③
E181	DRYING	CONC	SLR	---	---	CMU	EN	---	---	(E) CMU	EN	---	12'-0"	
E182	SHOWER	CT	F	CT	F	CT	F	CT	F	CT	F	CP	EN	8'-6"
E183	TREATMENT	(E)VCT	---	---	---	(E) CMU	EN	CMU	EN	(E) CMU	EN	---	12'-0"	
E184	RESTROOM	(E) CONC	---	---	---	(E) CMU	EN	(E) CMU	EN	(E) CMU	EN	(E) ACP	8'-6"	
E185	RESTROOM	(E) CONC	---	---	---	(E) CMU	EN	(E) CMU	EN	(E) CMU	EN	(E) ACP	8'-6"	
E186	LOCKERS	(E) CONC	---	---	---	(E) CMU	EN	(E) CMU	EN	(E) CMU	EN	---	12'-0"	
E187	HALL	(E) CONC	(E)	---	---	---	---	CMU	EN	(E) CMU	EN	---	12'-0"	③

FINISH SCHEDULE LEGEND

ACP: ACOUSTICAL CEILING PANEL
 CONC: CONCRETE
 CP: CEMENT PLASTER
 CT: CERAMIC TILE
 (E): EXISTING
 EN: ENAMEL PAINT
 F: FACTORY FINISH
 GB: GYPSUM BOARD
 SLR: SEALER
 VCT: VINYL COMPOSITION TILE

FINISH SCHEDULE - GENERAL NOTES

1. REFER TO SECTION 09 90 00 OF THE PROJECT MANUAL FOR PAINTING SCHEDULES, INCLUDING ITEMS TO NOT BE PAINTED.

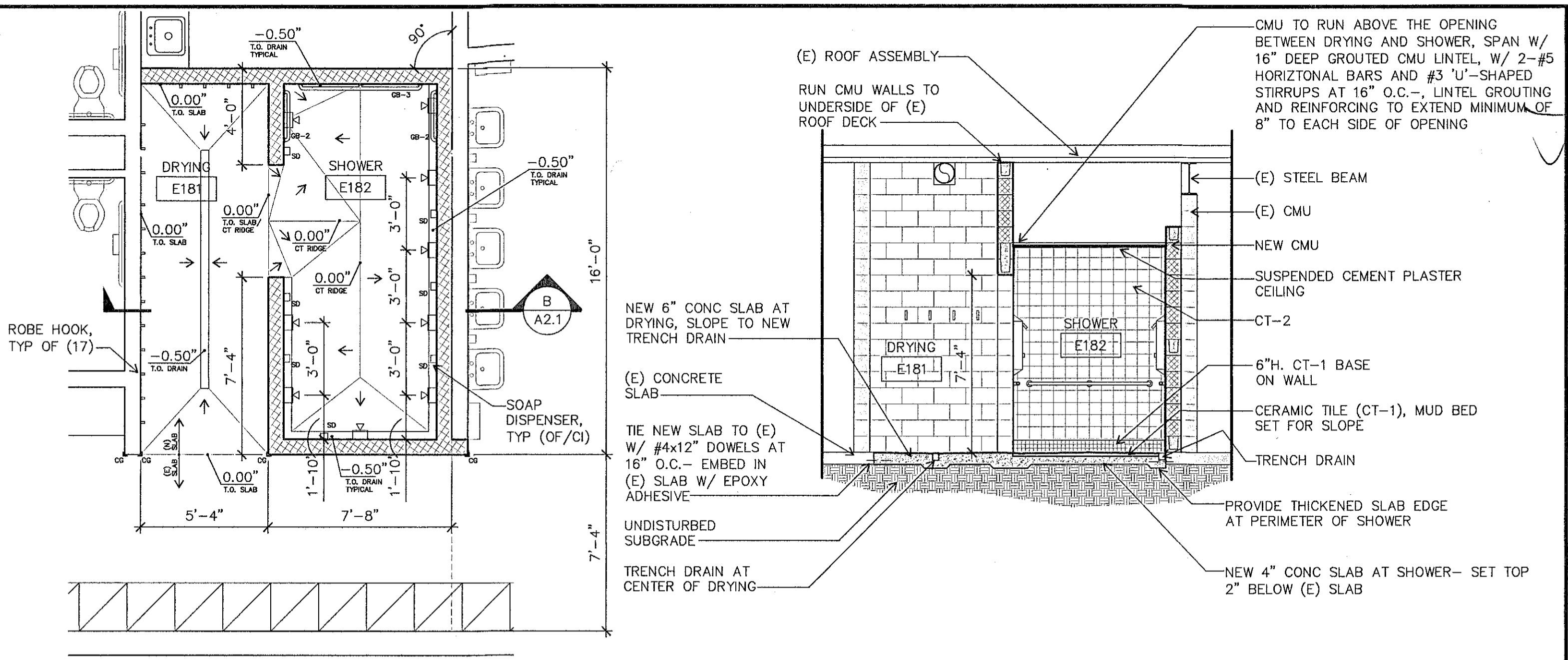
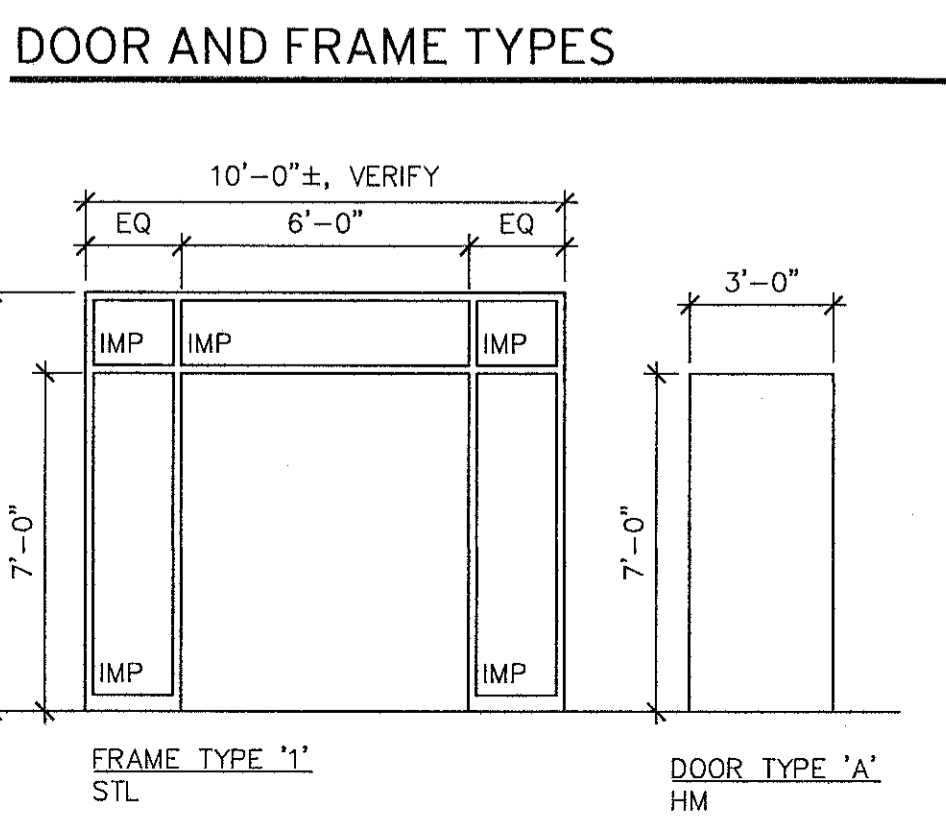
FINISH SCHEDULE - SPECIFIC NOTES

① CERAMIC TILE AT FLOORS AND WALLS OF NEW SHOWER COMPARTMENTS.
 ② CEMENT PLASTER CEILING/LID OVER SHOWER COMPARTMENTS. TOP OF LID AT 9'-4". CEILING AT 8'-6".
 ③ EXISTING EPOXY FINISH TO REMAIN ON SLAB.

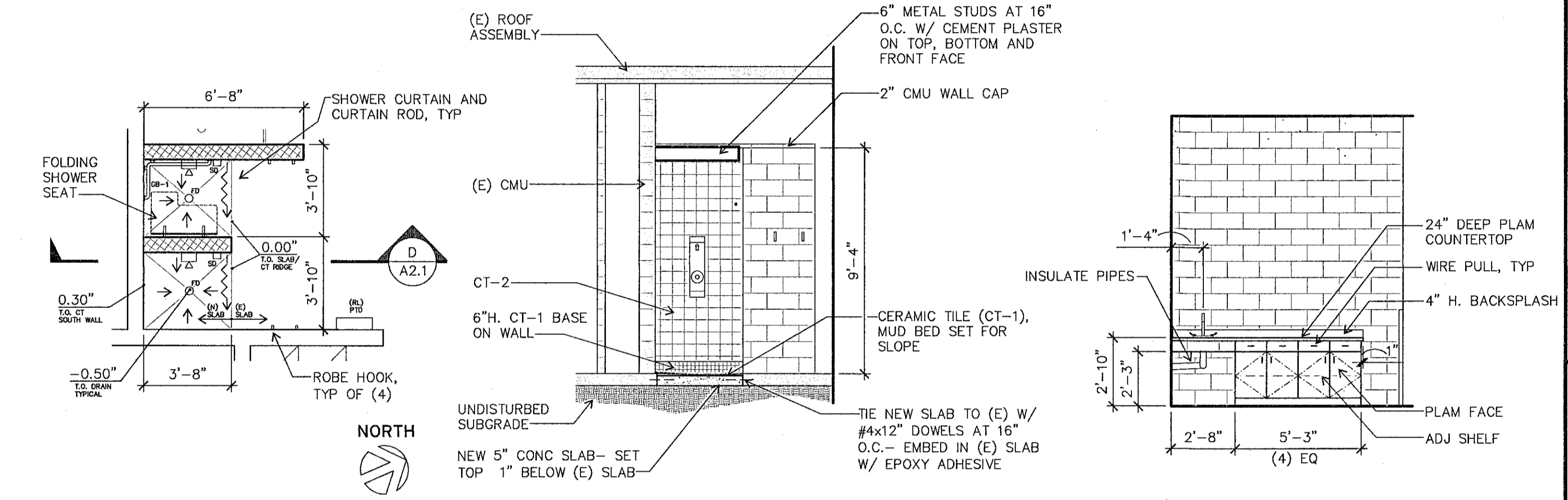
DOOR SCHEDULE										
DR. NO.	DOOR			FRAME			HARDWARE		RATING	COMMENTS
	TYPE	MTL	GLASS	TYPE	MTL	GLASS	GROUP			
EV175-A	A	HM	---	1	STL	IMP	1	---	---	ONE OF PAIR
EV175-B	A	HM	---	1	STL	IMP	1	---	---	ONE OF PAIR

DOOR SCHEDULE GENERAL NOTES

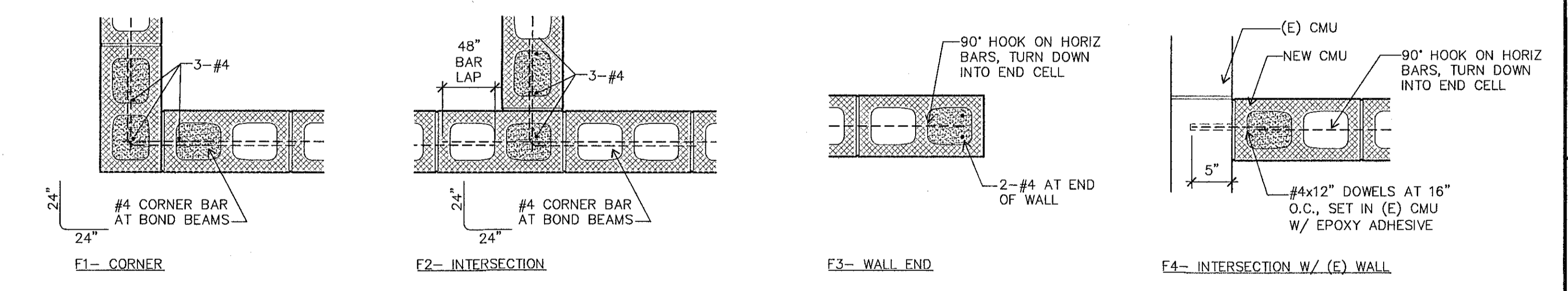
- INTERIOR DOORS CARRY THE ROOM NUMBER INTO WHICH THEY SWING AND A SEQUENCE LETTER.
- EXTERIOR DOORS CARRY THE ROOM NUMBER FROM WHICH THEY ARE LOCATED AND A SEQUENCE NUMBER.
- PAIRS OF DOORS ARE SCHEDULED INDIVIDUALLY. THEIR FRAME IS LISTED WITH EACH DOOR BUT ONLY ONE IS REQUIRED.
- ABBREVIATIONS ARE AS FOLLOWS:
 HM: HOLLOW METAL
 IMP: INSULATED METAL PANEL
 STL: STEEL
- VERIFY HAND OF DOORS AND FRAMES WITH THE FLOOR PLANS.
- REFER TO SECTION 08 71 00 OF SPECIFICATIONS FOR HARDWARE GROUP DESCRIPTION.
- DOOR DIMENSIONS ARE NOMINAL. EXACT DIMENSIONS ARE TO BE SHOWN ON SHOP DRAWINGS.



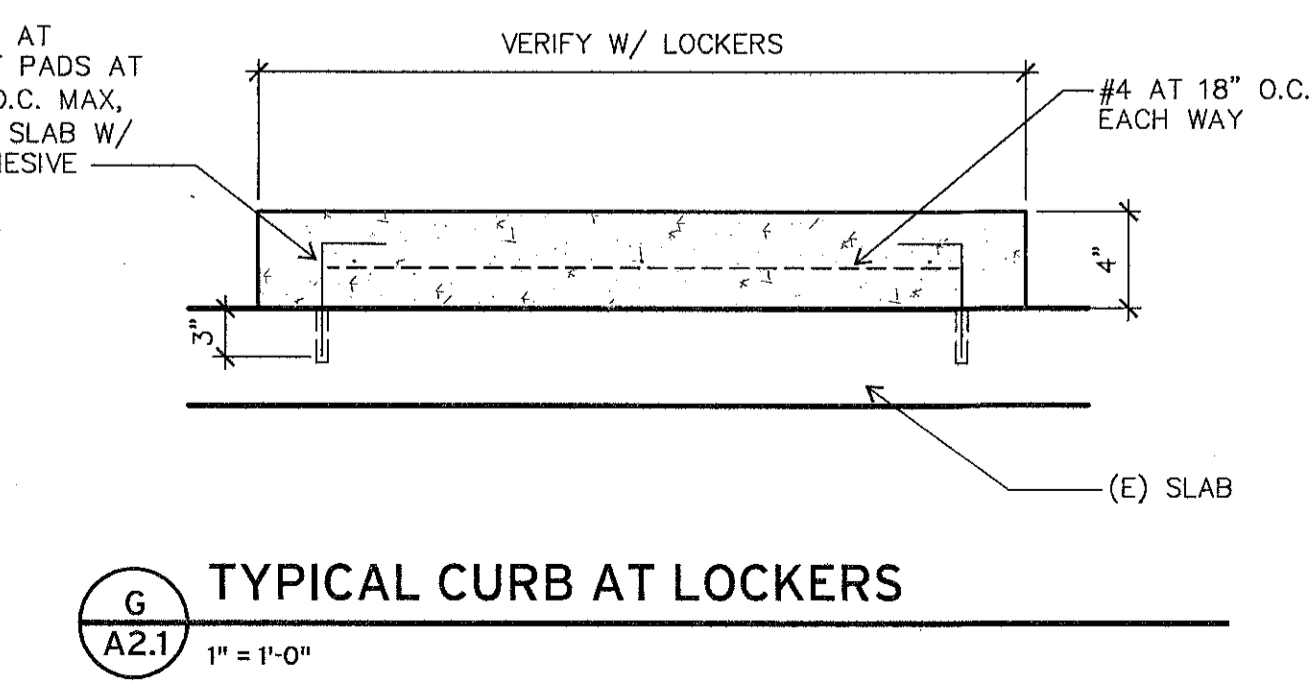
A A2.1 ENLARGED PLAN AT SHOWER E182 1/4" = 1'-0"
B A2.1 SECTION AT SHOWER E182 1/4" = 1'-0"



C A2.1 ENLARGED PLAN AT E175 1/4" = 1'-0"
D A2.1 SECTION AT COACH LOCKER E175 1/4" = 1'-0"
E A2.1 CASEWORK AT TREATMENT E183 1/4" = 1'-0"



F A2.1 CMU WALL REINFORCING N.T.S.



G A2.1 TYPICAL CURB AT LOCKERS 1" = 1'-0"



Robertson Sherwood Architects pc
 132 East Broadway, Suite 540
 Eugene, Oregon 97401
 P 541 | 342.8077
 F 541 | 345.4302
 www.robertsonsherwood.com

UO Autzen Visitor Locker Room Renovation

SCHEDULES, SECTIONS, DETAILS

Drawn By: SS
 Checked: [Signature]
 Date: 15 MARCH 2013
 Project: 1227

A2.1

MECHANICAL LEGEND

PIPING

SYMBOL	ABBREV.	DESCRIPTION	SYMBOL	ABBREV.	DESCRIPTION
DIVISION 21 - 21 00 00: FIRE PROTECTION PIPING:					
	AFS	AUTOMATIC FIRE SPRINKLER		F	FIRE SPRINKLER SUPPLY
DIVISION 22 - 22 11 02: PLUMBING PIPING:					
	CH	POTABLE COLD WATER		HM	POTABLE HOT WATER
	HWR	POTABLE HOT WATER RETURN		H	SANITARY WASTE
	V	VENT		D	DRAIN
	SD	STORM DRAIN			CHANGE IN SIZE OF STRAIGHT PIPE FOR ALL PIPING EXCEPT FOR W & SD
		PIPE REDUCING FITTING: EXIST, NEW, CONCENTRIC, ECCENTRIC			DIRECTION OF FLOW
	WCO	WALL CLEANOUT		FD	FLOOR DRAIN
	DV	DRAIN VALVE		HB	HOSE BIBB
		UNION			WYE STRAINER
		WATER HAMMER ARRESTOR			BALL VALVE
	BFLY	BUTTERFLY VALVE		CV	CHECK VALVE
	GV	GATE VALVE		PRV	PRESSURE REGULATING VALVE
	FMS	FLOW MEASURING STATION		TPS	TEMPERATURE/PRESSURE SAFETY VALVE
		THERMOMETER			PRESSURE GAUGE
		TEST PLUG			METER
		MANUAL AIR VENT			AUTOMATIC AIR VENT
		GAS COCK			

DUCTWORK

DOUBLE-LINE SYMBOL	SINGLE-LINE SYMBOL	DESCRIPTION
	SA	RECTANGULAR SUPPLY AIR DUCT UP
	RA	RECTANGULAR RETURN AIR UP
	EA	RECTANGULAR EXHAUST AIR UP
	OSA	RECTANGULAR OUTSIDE AIR UP
		RECTANGULAR SUPPLY AIR DUCT DN
		RECTANGULAR RETURN AIR DN
		RECTANGULAR EXHAUST AIR or OUTSIDE AIR DN
		ROUND DUCTWORK UP
		ROUND DUCTWORK DOWN
		TURN VANE ELBOW
		STANDARD RADIUS ELBOW
		FLEXIBLE DUCT CONNECTION
		DIFFUSER TYPE SIZE - BLOW PATTERN (IF NOT 4-WAY)
		AIR VOLUME IN CUBIC FEET per MINUTE (CFM)
		GRILLE TYPE SIZE
		AIR VOLUME IN CUBIC FEET per MINUTE (CFM) SIZE
		SOUND ATTENUATED DUCTWORK
		MANUAL VOLUME DAMPER
		AUTOMATIC DAMPER
		SMOKE DETECTOR D= DUCT DETECTOR
		CONCENTRIC TRANSITION
		ECCENTRIC TRANSITION
		RECTANGULAR TO ROUND TRANSITION
		90deg HEEL TAP TAKEOFF (SUPPLY OR RETURN RECTANGULAR DUCT)
		ROUND SPIN IN CONNECTION TO (RECTANGULAR DUCT)
		MITERED TEE WITH TURNING VANES AND REDUCER (RECTANGULAR DUCTS)
		45deg LATERAL BRANCH (ROUND OR FLAT OVAL DUCTS)
		NESTED FITTING WITH REDUCER MITERED ELBOW WITH TURNING VANES (RECTANGULAR DUCTS)
		HIGH EFFICIENCY ROUND CONNECTION WITH VOLUME DAMPER TO (RECTANGULAR DUCT)
		HIGH EFFICIENCY ROUND CONNECTION TO (RECTANGULAR DUCT)

GENERAL

SYMBOL	ABBREVIATION	DESCRIPTION
	(E)	EXISTING
	dia	DIAMETER
		NEW TO EXISTING POINT OF CONNECTION
		NOTE REFERENCE MARKER
	M-122, M-501	PLAN OR DETAIL REFERENCE MARKER
	A, M-40	SECTION REFERENCE MARKER
	EF, 2	EQUIPMENT MARKER
	20B	ROOM NUMBER
		EXISTING SHOWN LIGHT
		NEW WORK SHOWN BOLD
		EXISTING TO BE REMOVED

CONTROLS

SYMBOL	DESCRIPTION	SYMBOL	DESCRIPTION
	PROCESS PIPING SIGNAL		AUTOMATIC DAMPER
	ELECTRIC SIGNAL		SENSOR WELL
	ROOM SENSOR		FLOW SWITCH
	ROOM HUMIDITY SENSOR		STATIC PRESSURE TRANSMITTER
	TRANSMITTER CO2= CARBON DIOXIDE DP= DIFFERENTIAL F= FLOW KW= KILOWATTS P= PRESSURE T= TEMPERATURE		BAS INPUT/OUTPUT POINT
	RELAY C= ELECTRIC CURRENT DP= DIFFERENTIAL PRESSURE FP= FREEZE PROTECTION M= MANUAL		ALARM AI= ANALOG INPUT AO= ANALOG OUTPUT C= COMMUNICATION DI= DIGITAL INPUT DO= DIGITAL OUTPUT S/S= START/STOP
	ACTUATOR E= ELECTRIC		SMOKE DETECTOR
	SENSOR F= FLOW P= PRESSURE T= TEMPERATURE		MOTOR STARTER (W/ EQUIPMENT INDICATED UNDERLINED)
			EQUIPMENT CONTROL PANEL VFD= VARIABLE FREQUENCY DRIVE FAP= FIRE ALARM PANEL (W/ EQUIPMENT INDICATED UNDERLINED)

GENERAL NOTES

1. SIZE AND LOCATION OF ALL EXISTING PIPING AND OTHER MECHANICAL EQUIPMENT IS APPROXIMATE. CONTRACTOR SHALL SITE VERIFY THE EXACT LOCATION OF EXISTING AND CONSTRUCT ALL WORK FROM FIELD DIMENSIONS. CONTRACTOR SHALL MAKE ALL ADJUSTMENTS NECESSARY TO ACCOMMODATE MINOR DEVIATIONS AT NO COST TO OWNER.
2. FINE (LIGHT) LINE WORK INDICATES EXISTING PIPING AND OTHER MECHANICAL EQUIPMENT. BOLD (HEAVY) LINE WORK INDICATES NEW PIPING AND OTHER MECHANICAL EQUIPMENT.
3. IT IS THE RESPONSIBILITY OF THE CONTRACTOR TO PROVIDE CUTTING AND PATCHING TO ALLOW THE INSTALLATION OF MATERIALS AND EQUIPMENT AS SPECIFIED AND SHOWN ON DRAWINGS.
4. WHERE (E) FIRE PROTECTIVE TREATMENT ON STRUCTURAL MEMBERS IS DAMAGED OR REMOVED AS A RESULT OF WORK, REPAIR TREATMENT TO MATCH (E).

ABBREVIATIONS

A	ACTUATOR
AFF	ABOVE FINISHED FLOOR
AL	ALUMINUM
BHP	BRAKE HORSEPOWER
C	COMMON
CFM	CUBIC FEET per MINUTE
CMU	CONCRETE MASONRY UNIT
CONC	CONCRETE
COND	CONDENSATE
CONT	CONTINUATION
DN	DOWN
FD	FLOOR DRAIN
FUT	FUTURE
GYP BD	GYPSPUM WALL BOARD
L	LAVATORY
MAX	MAXIMUM
MBH	THOUSAND BTUs per HOUR
MCA	MINIMUM CIRCUIT AMPS
MFR	MANUFACTURER
MIN	MINIMUM
MOCP	MAX. OVER CURRENT PROTECTION
NC	NORMALLY CLOSED
NIC	NOT IN CONTRACT
NO	NORMALLY OPEN
REQ'D	REQUIRED
S	SINK
SF	SUPPLY FAN
SH	SHOWER
STL	STEEL
TP	TYPICAL
UR	URINAL
WC	WATER CLOSET
WG	WATER GAUGE



Robertson Sherwood Architects pc
www.robertsonsherwood.com
132 East Broadway, Suite 540
Eugene, Oregon 97401
P 541 342.8077
F 541 345.4302

Robertson Sherwood Architects pc
www.robertsonsherwood.com
132 East Broadway, Suite 540
Eugene, Oregon 97401
P 541 342.8077
F 541 345.4302

SYSTEMS WEST ENGINEERS, INC.
411 High Street
Eugene, Oregon 97401-2427
541.342.7210
systemswestengineers.com

SVE Project No.: N035.01
File: m01.jg

LEGEND
Drawn By: KMG
Checked: GNL
Date: 15 MAR 2013
Project: 1227

MO.1

CABINET FAN SCHEDULE (EF)																		
TAG No.	MANUFACTURER & MODEL No.	TYPE	PERFORMANCE				WHEEL				SOUND LEVEL (SONES)	MOTOR			CONTROL (1)		REMARKS	
			AIRFLOW (CFM)	TSP (IN)	ESP (IN)	RPM	POWER (BHP)	TYPE	BLADE	DIA		CLASS	HP	VOLTS	PH	STARTER		VFD
CF-1	GREENHECK MSCF-25L	MODULAR CABINET	1100	0.70	0.50	1557	0.6	CENT.	FC	18	I	2.2	3/4	208	1	Y	N/A	(2)

- (1) MOTOR CONTROL FURNISHED BY DIV. 23.
(2) UNIT SUSPENDED FROM STRUCTURE ABOVE - OPERATING WT. : 210 LBS.

INTAKE/RELIEF CAP SCHEDULE (IC/RC)										
TAG No.	MANUFACTURER & MODEL No.	SERVICE	TYPE	PERFORMANCE					OPER. WT. (LBS.)	REMARKS
				AIRFLOW (CFM)	THROAT SIZE	HOOD SIZE	SP DROP (IN)	THROAT VELOCITY		
IC-1	GREENHECK GR5I	CF-1 / DF-1	ROUND SPUN ALUMINUM	1100	20" DIA	36" DIA	0.04	488	30	W/ FACTORY ROOF CURB
RC-1	GREENHECK GR5R	EF-1	ROUND SPUN ALUMINUM	1200	20" DIA	36" DIA	0.03	533	30	W/ FACTORY ROOF CURB

GAS CALCULATIONS				
FIXTURE	NO. OF FIXTURES	BTU/HR INPUT	TOTAL BTU/HR	REMARKS
EXISTING EQUIPMENT:				
RTU-ET1	1	120,000	120,000	
NEW EQUIPMENT:				
GAS-FIRED DUCT FURNACE				
DF-1	1	125,000	125,000	
DWH-1	3	199,000	597,000	
TOTAL DEMAND (BTU)			842,000	
TOTAL DEMAND (CFH)			842	

PLUMBING SCHEDULE							
TAG No.	FIXTURE	PIPE CONNECTIONS (IN.)					REMARKS
		W	IW (INDIRECT)	V	CW	HW	
S-1	SINK	2"	-	1-1/2"	1/2"	1/2"	COUNTER MOUNTED
SH-1	SHOWER	-	-	-	1/2"	1/2"	
SD-1	SHOWER DRAIN	4"	-	-	-	-	
SD-2	SHOWER DRAIN	3"	-	-	-	-	
SD-3	SHOWER DRAIN	2"	-	-	-	-	
TD-1	TRENCH DRAIN	2"	-	-	-	-	

EXPANSION TANK SCHEDULE (ET)							
TAG No.	MANUFACTURER & MODEL No.	SERVICE	TANK SIZE DIA x LENGTH (IN)	TANK VOLUME (GAL)	ACCEPTANCE VOLUME (GAL)	MAX OPERATING WEIGHT (LBS)	REMARKS
ET-1	BELL & GOSSETT PTA-5	DOMESTIC HOT WATER	10" x 10.375"	2.1	0.9	35	

DOMESTIC WATER HEATER SCHEDULE (DWH)											
TAG No.	MANUFACTURER & MODEL No.	WATER HEATING CAPACITY			GAS CONNECTION			ELECTRICAL CONNECTION		REMARKS	
		FLOW GPM	EWI °F	LWT °F	MAX INPUT (BTU)	MAX OUTPUT (BTU)	MAX PRESSURE (IN. WC.)	VOLT	PH		FLA (1)
DWH-1	A.O. SMITH ATI-520H-N	6.0	50	110	199,000	181,090	10.5	120	1	1.8	WALL-MOUNTED INSTANTANEOUS CONDENSING HIGH-EFFICIENCY TANKLESS

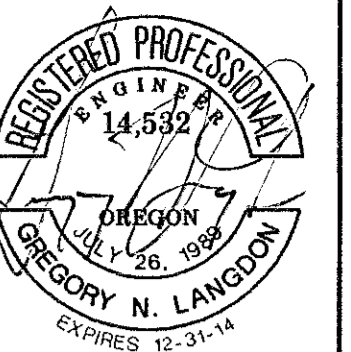
- (1) FULL LOAD AMPS

EXHAUST FAN SCHEDULE (EF)											
TAG No.	MANUFACTURER & MODEL No.	TYPE	PERFORMANCE			SOUND LEVEL (SONES)	MOTOR			REMARKS	
			AIRFLOW (CFM)	TSP (IN)	RPM		WATTS	VOLTS	PH		
EF-1	GREENHECK CSP-A1410	INLINE CABINET	1200	5/8	1375	4.2	822	120	1		

- (1) MOTOR CONTROL FURNISHED BY DIV. 23.

GAS DUCT FURNACE SCHEDULE (DF)													
TAG No.	MANUFACTURER & MODEL No.	AIRFLOW (CFM)	HEATING CAPACITY			FUEL		UNIT WEIGHT (LBS)	ELECTRICAL				REMARKS
			INPUT (BTUH)	OUTPUT (BTUH)	EFF (%)	TYPE	CONNECTION SIZE		VOLTS	PHASE	FLA (1)	MOP (2)	
DF-1	REZVOR SC 125	1100	125,000	100,000	80.0	NAT GAS	1/2"	190.0	115	1	1.9	15	(3)

- (1) FULL LOAD AMPS
(2) MAXIMUM OVERCURRENT PROTECTION
(3) PROVIDE W/ OPTIONAL FACTORY FAN CONTROL AND ELECTRONIC BURNER MODULATION WITH DDC CONTROL



132 East Broadway, Suite 540
Eugene, Oregon 97401
P 541 342.6077
F 541 345.4302
www.robertsonsherwood.com

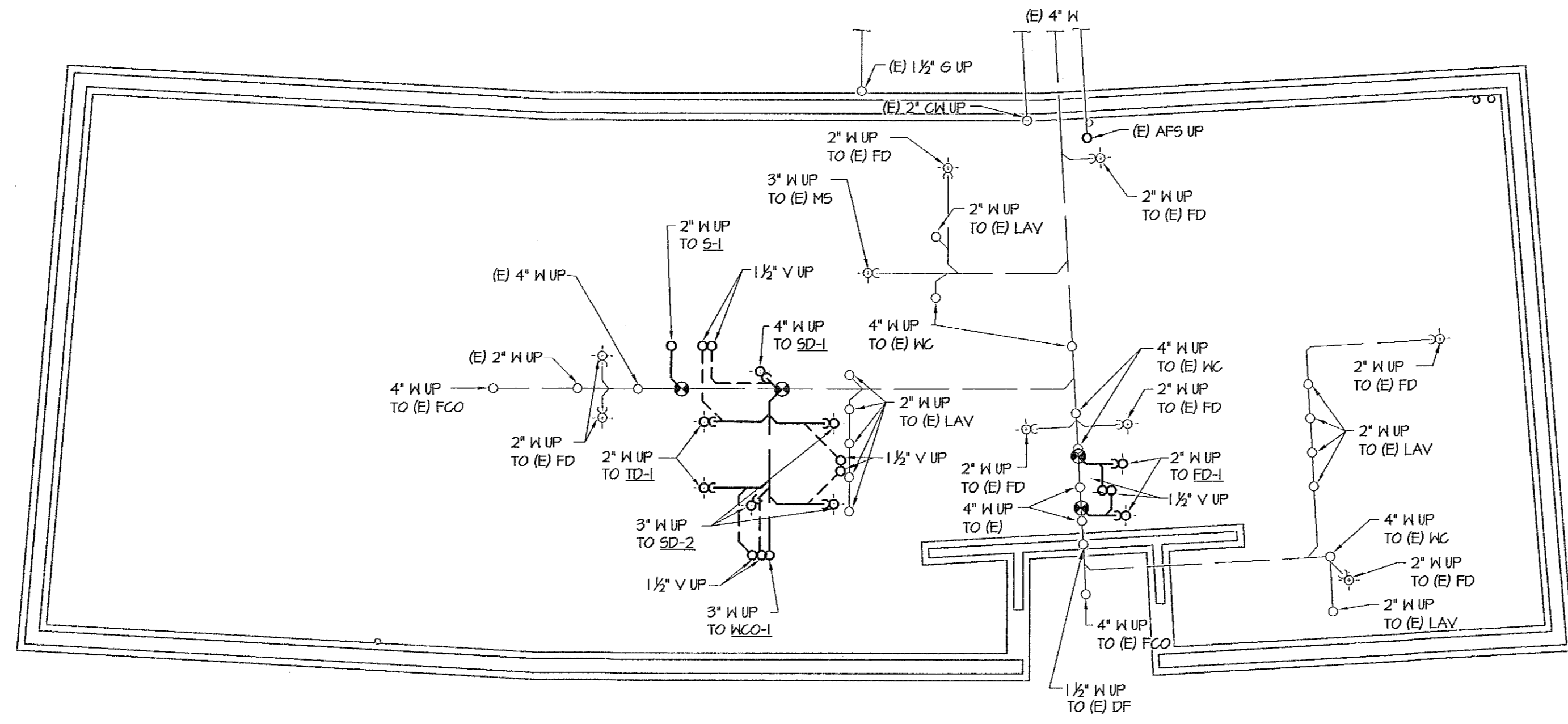
Robertson Sherwood Architects pc
UO Autzen Visitor Locker Room Renovation
Autzen East Gate, Building 220
2775 Martin Luther King Jr. Boulevard
Eugene, Oregon 97401

SYSTEMS WEST ENGINEERS, INC.
411 High Street
Eugene, Oregon 97401-2427
541.342.7210
systemswestengineers.com
SWE Project No.: N035.01
File: m0.2_sh

SCHEDULES

Drawn By: SJS
Checked: GNL
Date: 15 MAR 2013
Project: 1227

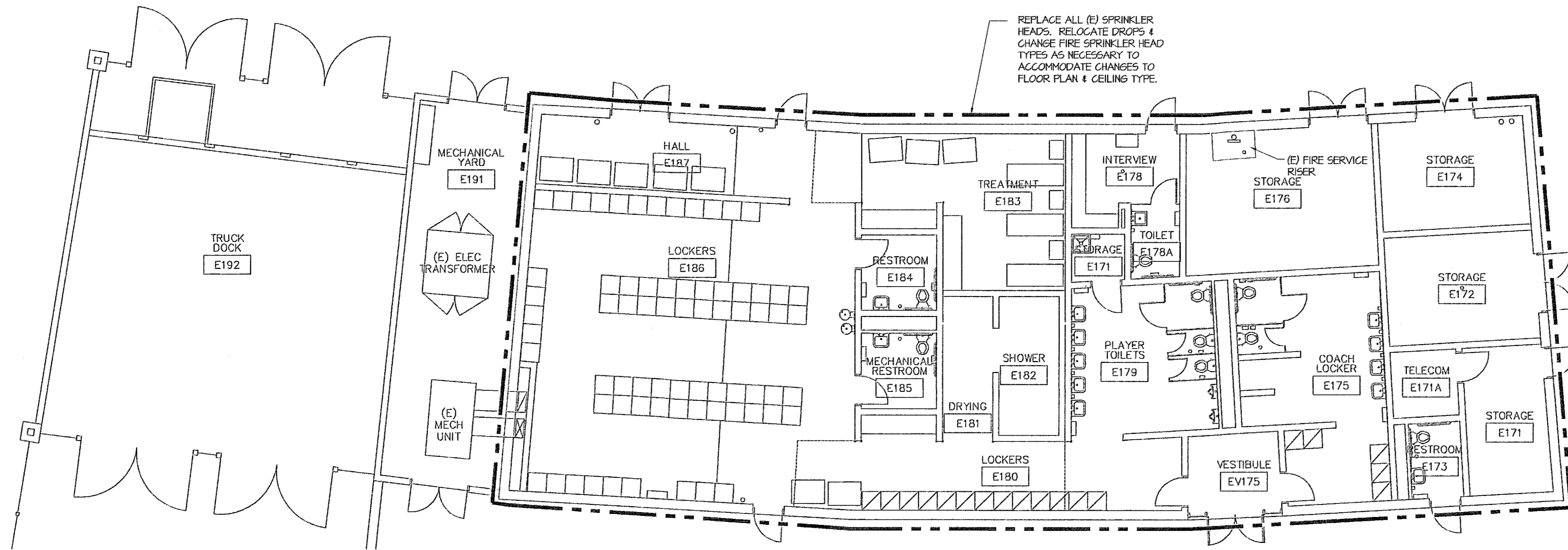
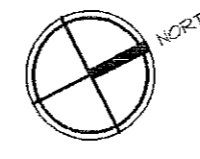
M0.2



FOUNDATION PLAN - PLUMBING

SCALE: 1/8" = 1'-0"

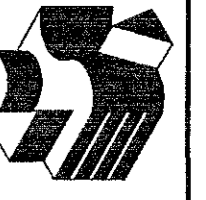
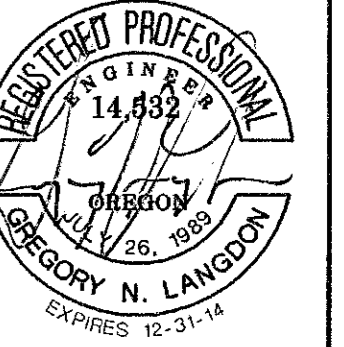
1
M1.0



GROUND FLOOR PLAN - FIRE PROTECTION

SCALE: 1/8" = 1'-0"

1
M1.0

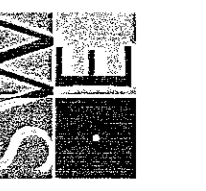


Robertson Sherwood Architects pc

132 East Broadway, Suite 540
Eugene, Oregon 97401
P 541.342.8077
F 541.345.4302
www.robertsonsherwood.com

UO Autzen Visitor Locker Room Renovation

Autzen East Gate, Building 220
2775 Martin Luther King Blvd
Eugene, Oregon 97401



SYSTEMS WEST ENGINEERS, INC.
410 High Street
Eugene, Oregon 97401
541.342.7210
systemswestengineers.com

SWE Project No.: N033.01
File: m1.0_ppbdf

**FOUNDATION PLAN -
PLUMBING,
GROUND FLOOR PLAN -
FIRE PROTECTION**

Drawn By	SJS
Checked	GNL
Date	15 MAR 2013
Project	1227

M1.0

- REFERENCE NOTES:
- 1 DEMOLISH (E) FIXTURE. DEMOLISH CH & V PIPING & CAP AT NEAREST ACTIVE MAIN. DEMOLISH W PIPING & CAP BELOW FLOOR.
 - 2 DEMOLISH (E) FIXTURE. DEMOLISH CH & V PIPING & CAP AT NEAREST ACTIVE MAIN. DEMOLISH W PIPING & CAP IN WALL.
 - 3 4" COMBUSTION VENT THROUGH ROOF. ROUTE ABOVE (E) DUCTWORK. TERMINATE ABOVE ROOF WITH MINIMUM 3' SEPARATION FROM COMBUSTION AIR INLETS AND MINIMUM 10' SEPARATION FROM OUTSIDE AIR INTAKE FOR HVAC EQUIPMENT.



Autzen East Gate, Building 220
2775 Martin Luther King Jr. Boulevard
Eugene, Oregon 97401

Robertson Sherwood Architects pc
132 East Broadway, Suite 540
Eugene, Oregon 97401
P 541 | 342.8077
F 541 | 345.4302
www.robertsonsherwood.com

UO Autzen Visitor Locker Room Renovation

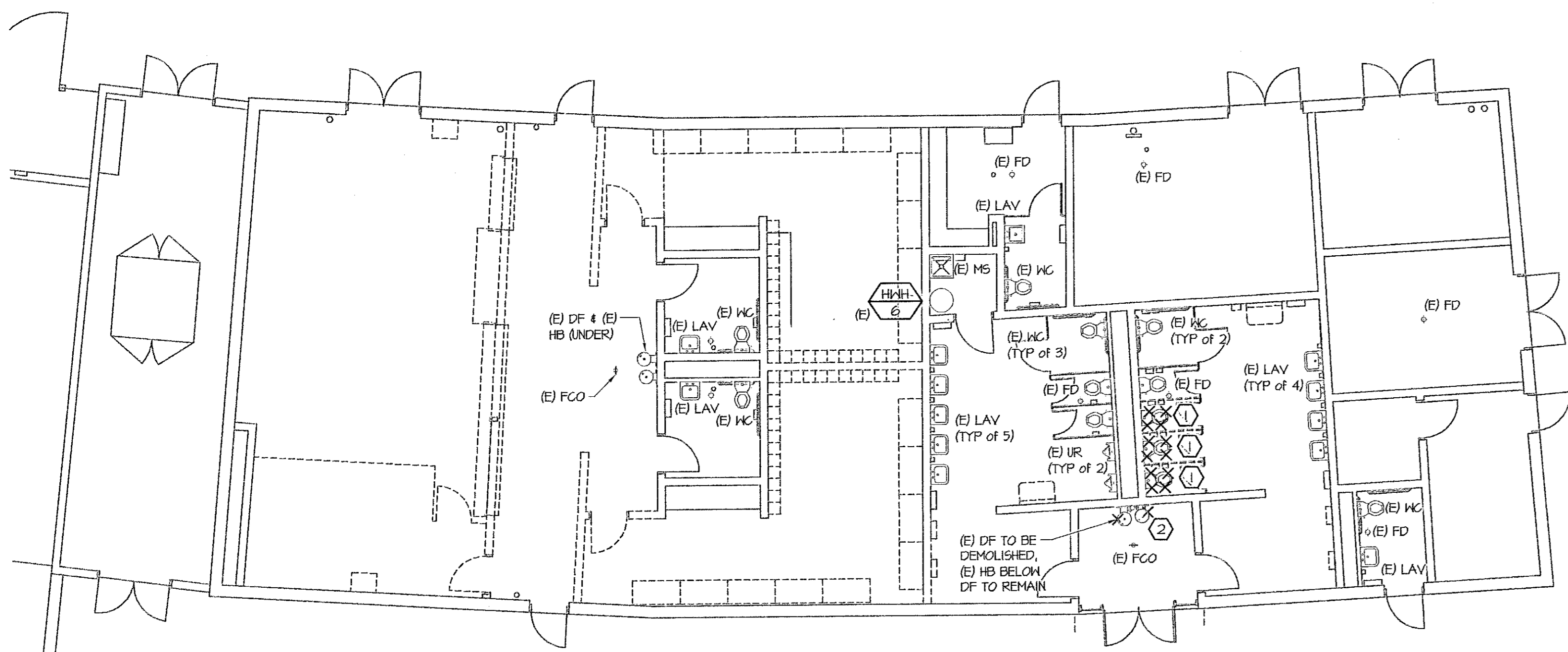
SWE
SYSTEMS WEST ENGINEERS, INC.
411 High Street
Eugene, Oregon 97401-2427
541.342.7210
systemswestengineers.com

SWE Project No.: N033.01
File: m1.1_fppbg

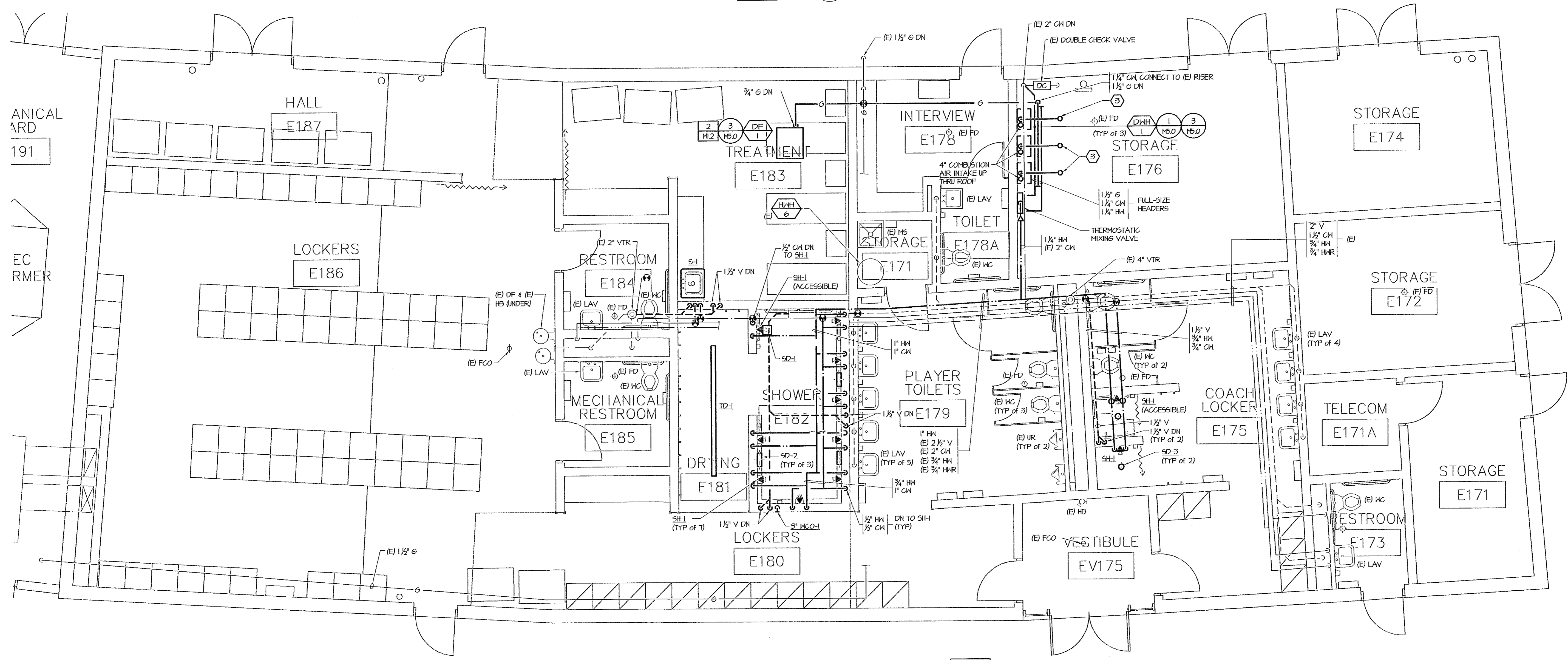
GROUND FLOOR PLANS - PLUMBING

Drawn By: SJS
Checked: GNL
Date: 15 MAR 2013
Project: 1227

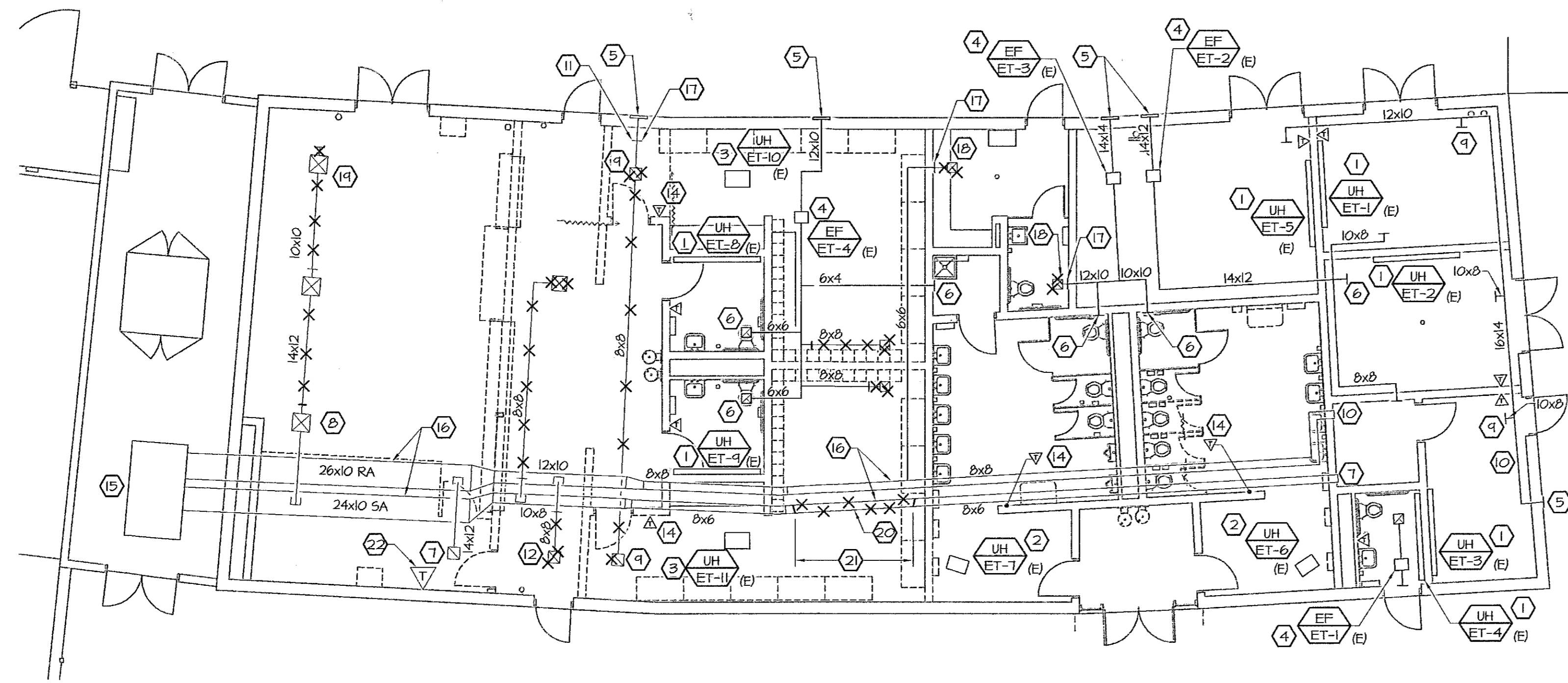
M1.1



GROUND FLOOR PLAN - PLUMBING DEMOLITION 1
SCALE: 1/8" = 1'-0"
M1.1



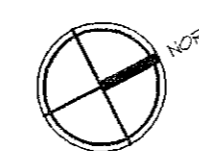
GROUND FLOOR PLAN - PLUMBING 2
SCALE: 1/4" = 1'-0"
M1.1



GROUND FLOOR PLAN - MECHANICAL DEMOLITION

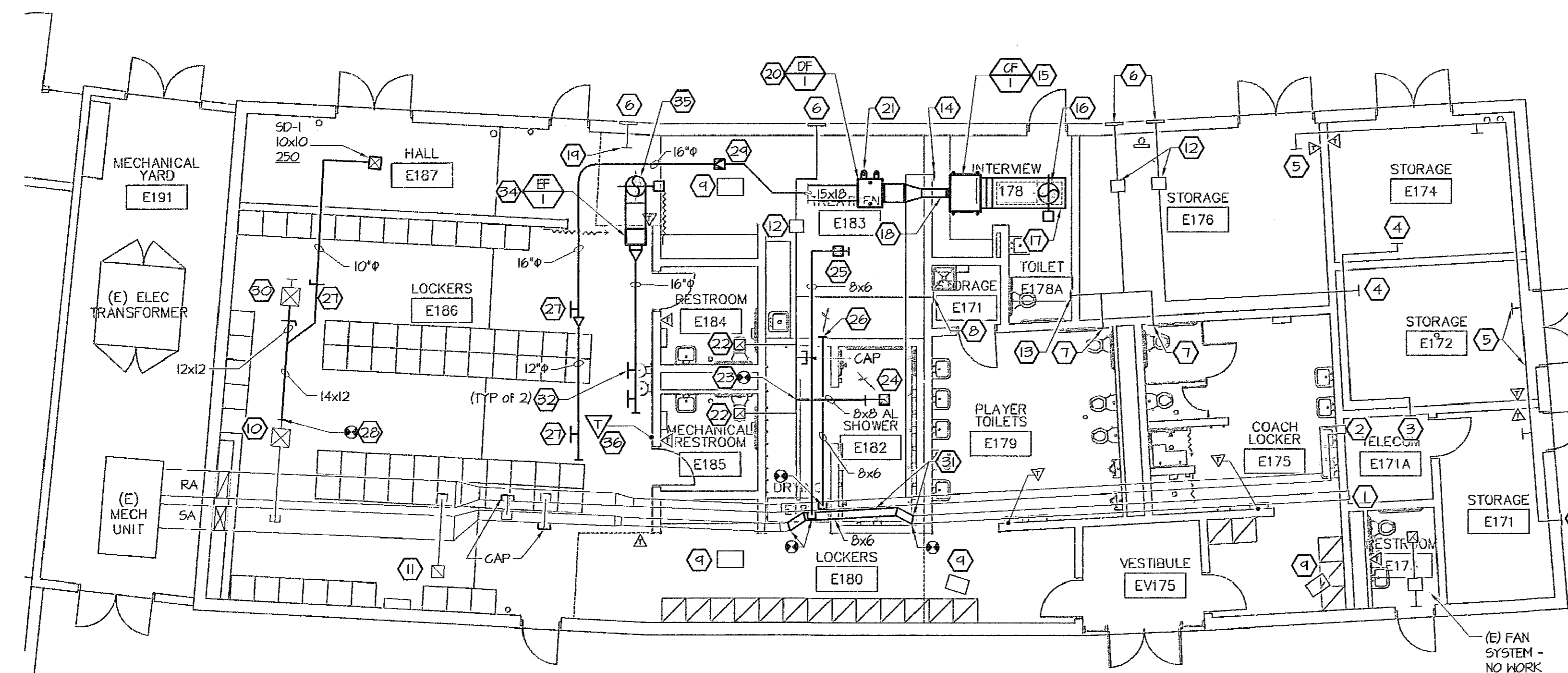
SCALE: 1/8" = 1'-0"

1
M1.2



REFERENCE NOTES: (1/M1.2)

- 1 WALL MOUNTED, ELECTRIC HEATER TO REMAIN.
- 2 SUSPENDED ELECTRIC UNIT HEATER TO REMAIN.
- 3 CEILING MOUNTED, ELECTRIC UNIT HEATER TO REMAIN. CEILING TO BE REMOVED - REFER TO ARCH. DWGS.
- 4 SUSPENDED IN-LINE EXHAUST FAN & DUCTWORK TO REMAIN.
- 5 EXTERIOR WALL LOUVER TO REMAIN.
- 6 EG TO REMAIN (TYP.)
- 7 RG TO REMAIN (TYP.)
- 8 SD TO REMAIN (TYP.)
- 9 TRANSFER GRILLE TO BE REMOVED.
- 10 SHG TO REMAIN.
- 11 MOTORIZED DAMPER TO REMAIN.
- 12 RG & RA DUCT TO BE REMOVED - CAP DUCT AT BRANCH TAKE-OFF.
- 13 SA & SA DUCT TO BE REMOVED - CAP DUCT AT BRANCH TAKE-OFF.
- 14 WALL MOUNTED THERMOSTAT TO REMAIN (TYP.)
- 15 GRADE MOUNTED 4-TON PACKAGED GAS/ELECT. A/C UNIT TO REMAIN.
- 16 SA & RA DUCTS TO REMAIN (TYP.)
- 17 POINT OF DEMOLITION OF DUCTWORK.
- 18 CEILING EG TO BE REMOVED.
- 19 SD TO BE RELOCATED.
- 20 REMOVE PORTION OF SA DUCT AND REROUTE PER REMODEL PLAN.
- 21 APPROXIMATE EXTEND TO REMOVED DUCT - VERIFY.
- 22 WALL-MOUNTED THERMOSTAT TO BE RELOCATED ((E) MECH A/C UNIT)



GROUND FLOOR PLAN - MECHANICAL

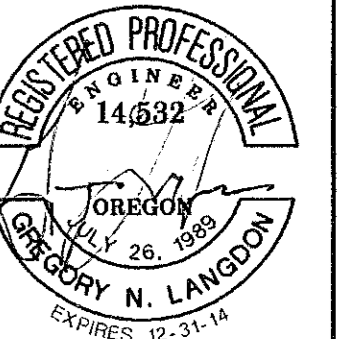
SCALE: 1/8" = 1'-0"

2
M1.2



REFERENCE NOTES: (2/M1.2)

- 1 (E) SMD - 150 CFM
- 2 (E) RG - 150 CFM
- 3 (E) EG - 260 CFM
- 4 (E) EG - 330 CFM
- 5 (E) MAKEUP AIR GRILLE AND DUCTWORK (TYP.)
- 6 (E) EXTERIOR WALL LOUVER
- 7 (E) EG - 480 CFM
- 8 (E) EG - 50 CFM
- 9 (E) SUSPENDED ELECTRICAL UNIT HEATER EXPOSED IN SPACE
- 10 (E) SD - 525 CFM
- 11 (E) RG - 1050 CFM
- 12 (E) SUSPENDED IN-LINE EXHAUST FAN
- 13 6"x6" EG-2 - 150 CFM - INSTALL IN (E) EA DUCT THRU WALL (VERIFY SIZE).
- 14 6"x6" SHG-1 - 150 CFM - INSTALL IN (E) SA DUCT THRU WALL (VERIFY SIZE).
- 15 SUSPENDED CABINET FAN EXPOSED IN SPACE
- 16 20" OSA DUCT WITH AD, THROUGH ROOF TO ROOF CAP (RC-1) - REFER TO SCHEDULE, SHEET MO.2, AND SECTION 23 33 00.
- 17 FULL SIZE LINED OSARA MIXING PLENUM
- 18 8"x8" SA DISCHARGE DUCT THROUGH (E) CMU WALL - PROVIDE NEW OPENING IN WALL.
- 19 (E) MAKEUP AIR DUCT STUB OUT
- 20 SUSPENDED GAS-FIRED DUCT FURNACE EXPOSED IN SPACE
- 21 5" COMBUSTION AIR PIPE AND 4" SINGLE WALL FLUE EXHAUST PIPE FROM DUCT FURNACE UP TO FACTORY CONCENTRIC ADAPTER ASSEMBLY BELOW ROOF. EXTEND CONCENTRIC 8" COMBUSTION AIR PIPE AND 5" FLUE PIPE THROUGH ROOF PER MANUFACTURER'S INSTALLATION INSTRUCTIONS.
- 22 (E) EG-100 CFM
- 23 CONNECT 8"x8" AL EA DUCT TO (E) BRANCH DUCT. EXTEND TO NEW CEILING EG.
- 24 EG-1 - 260 CFM
- 25 SD-1 8"x8" - 150 CFM
- 26 RG-1 8"x8" - 150 CFM
- 27 SG-1 14"x10" - 550 CFM
- 28 CONNECT 14"x12" SA TO (E) 14"x12" SA.
- 29 RECTANGULAR-TO-ROUND TRANSITION (TYP.)
- 30 RELOCATED (E) SD - 525 CFM
- 31 RELOCATED 8"x6" SA DUCT TO AVOID CONFLICT WITH NEH CMU WALL - RECONNECT AT OPENING IN (E) CMU WALL.
- 32 EG-2 16"x12" - 600 CFM
- 33 RG-1 16"x12" - 400 CFM
- 34 SUSPENDED IN-LINE EXHAUST FAN EXPOSED IN SPACE
- 35 20" EA DUCT WITH AD, THROUGH ROOF CAP (RC-1) - REFER TO SCHEDULE, SHEET MO.2, AND SECTION 23 33 00.
- 36 RELOCATED (E) THERMOSTAT FOR (E) MECH. A/C UNIT



Robertson Sherwood Architects pc

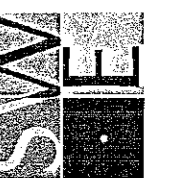
www.robertsonsherwood.com

P 541 | 342.8077
F 541 | 345.4302

132 East Broadway, Suite 540
Eugene, Oregon 97401

UO Autzen Visitor Locker Room Renovation

Autzen East Gate, Building 220
2775 Martin Luther King Jr. Boulevard
Eugene, Oregon 97401



SYSTEMS WEST ENGINEERS, INC.
411 High Street
Eugene, Oregon 97401-2427
541.342.7270
systemswestengineers.com

SWE Project No.: N033.01
File: m1.2_jtagr

GROUND FLOOR PLANS - MECHANICAL

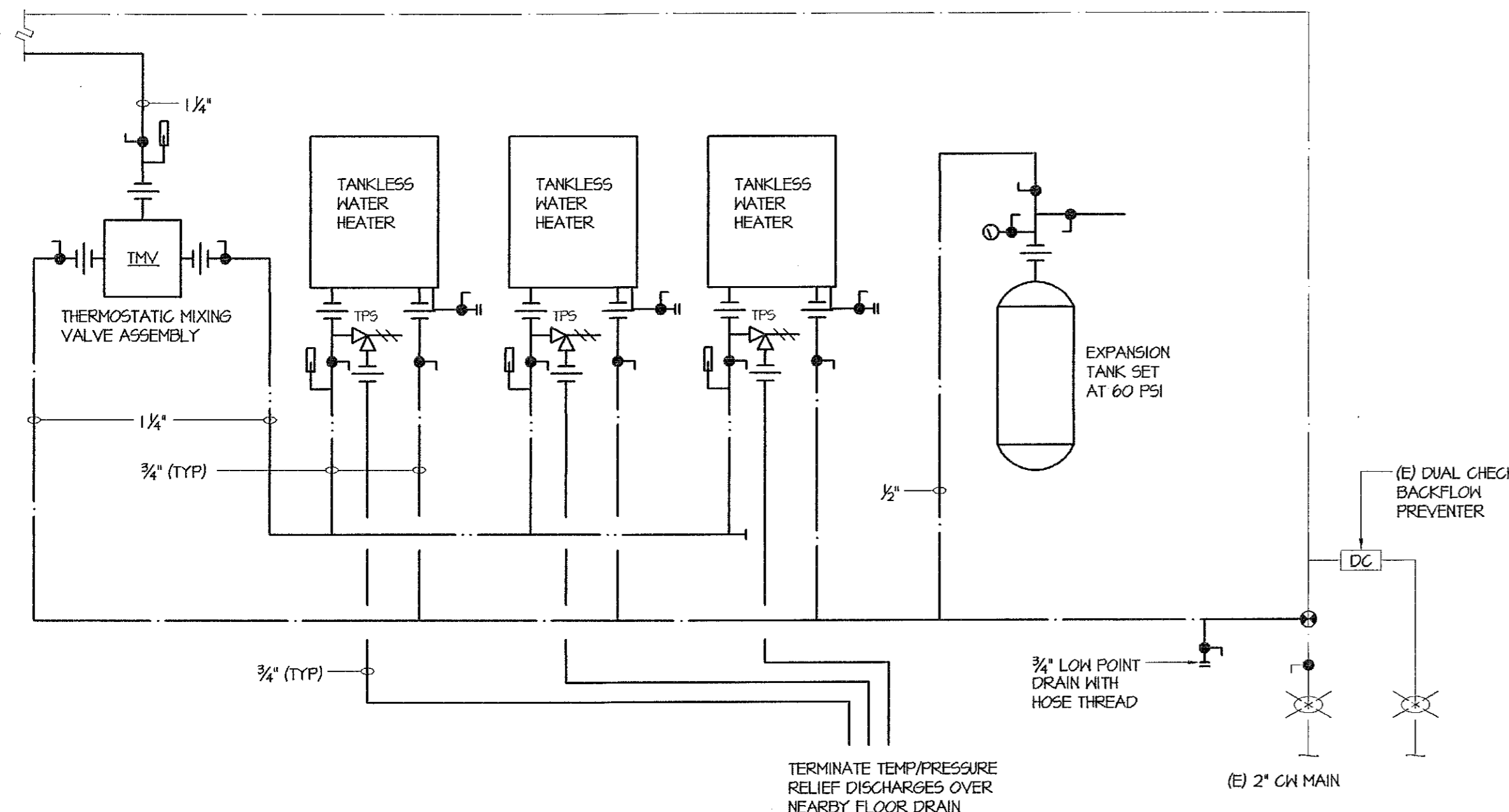
Drawn By: MCM/KMG

Checked: GNL

Date: 15 MAR 2013

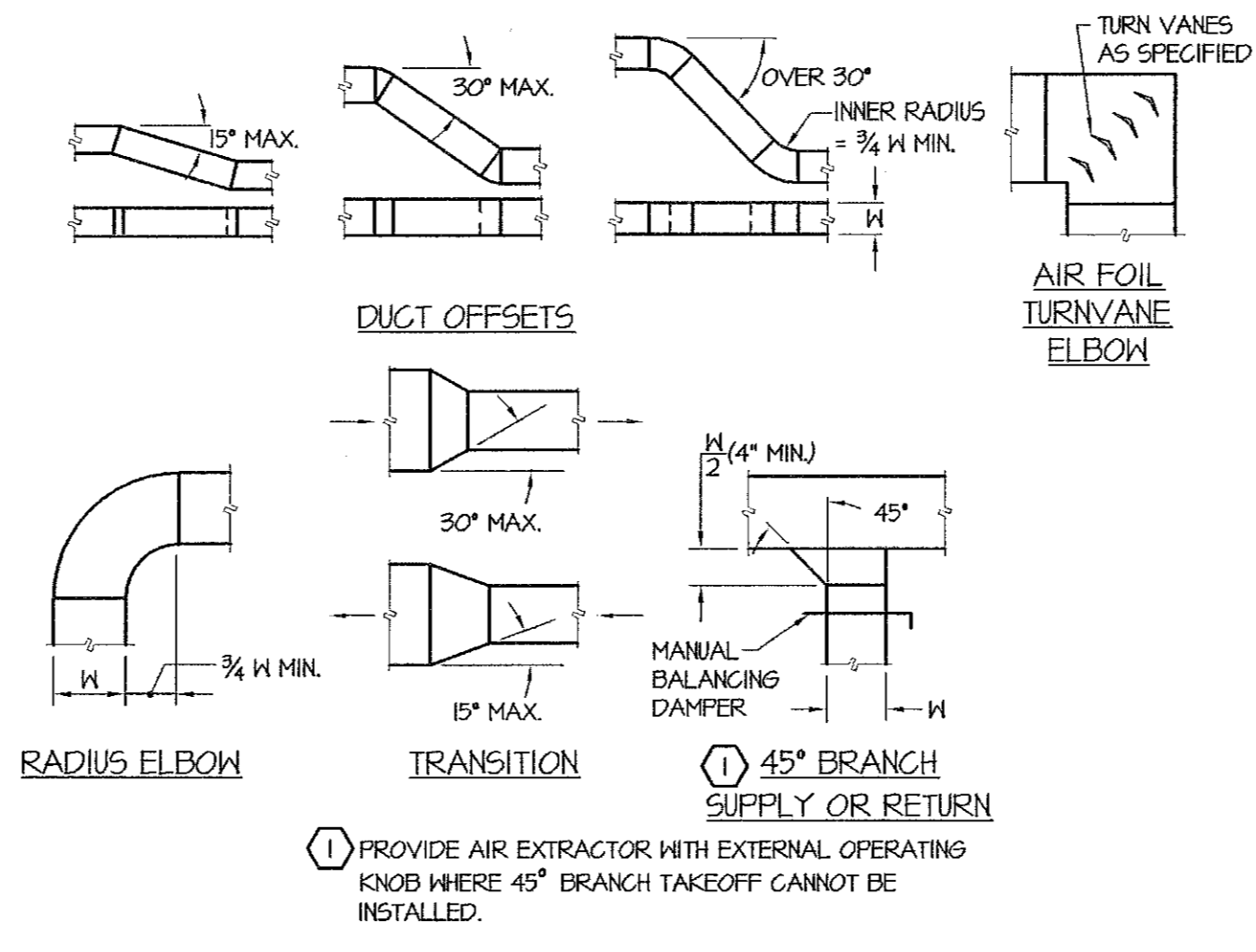
Project: 1227

M1.2



SINGLE TEMPERATURE DOMESTIC HOT WATER SCHEMATIC
NOT TO SCALE

1
M5.0

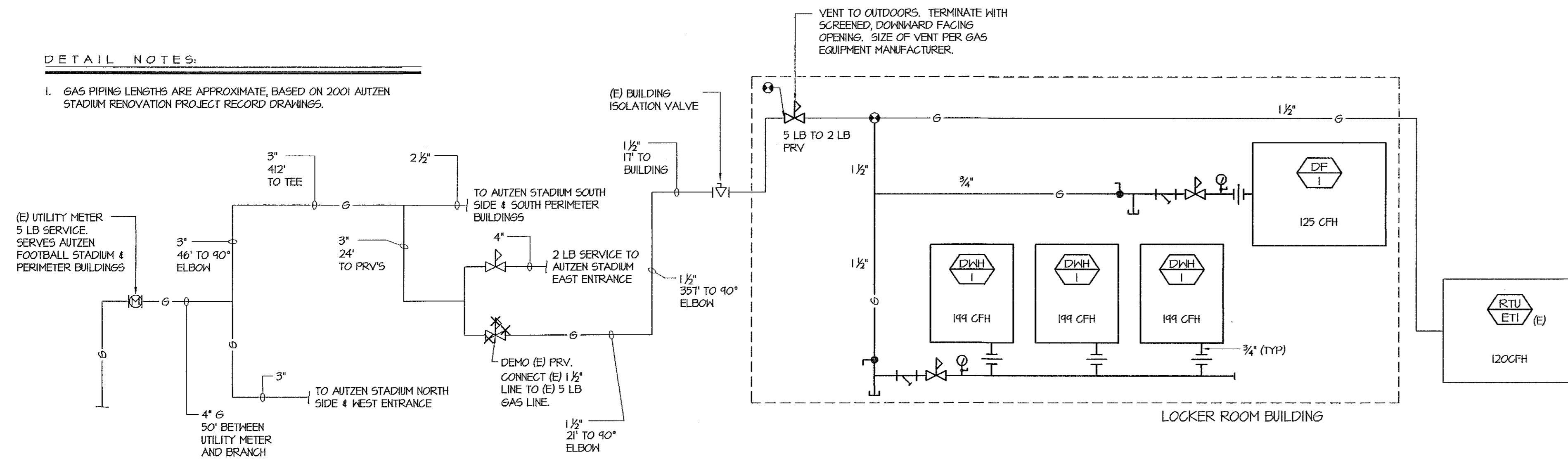


LOW VELOCITY DUCT CONSTRUCTION
NOT TO SCALE

2
M5.0

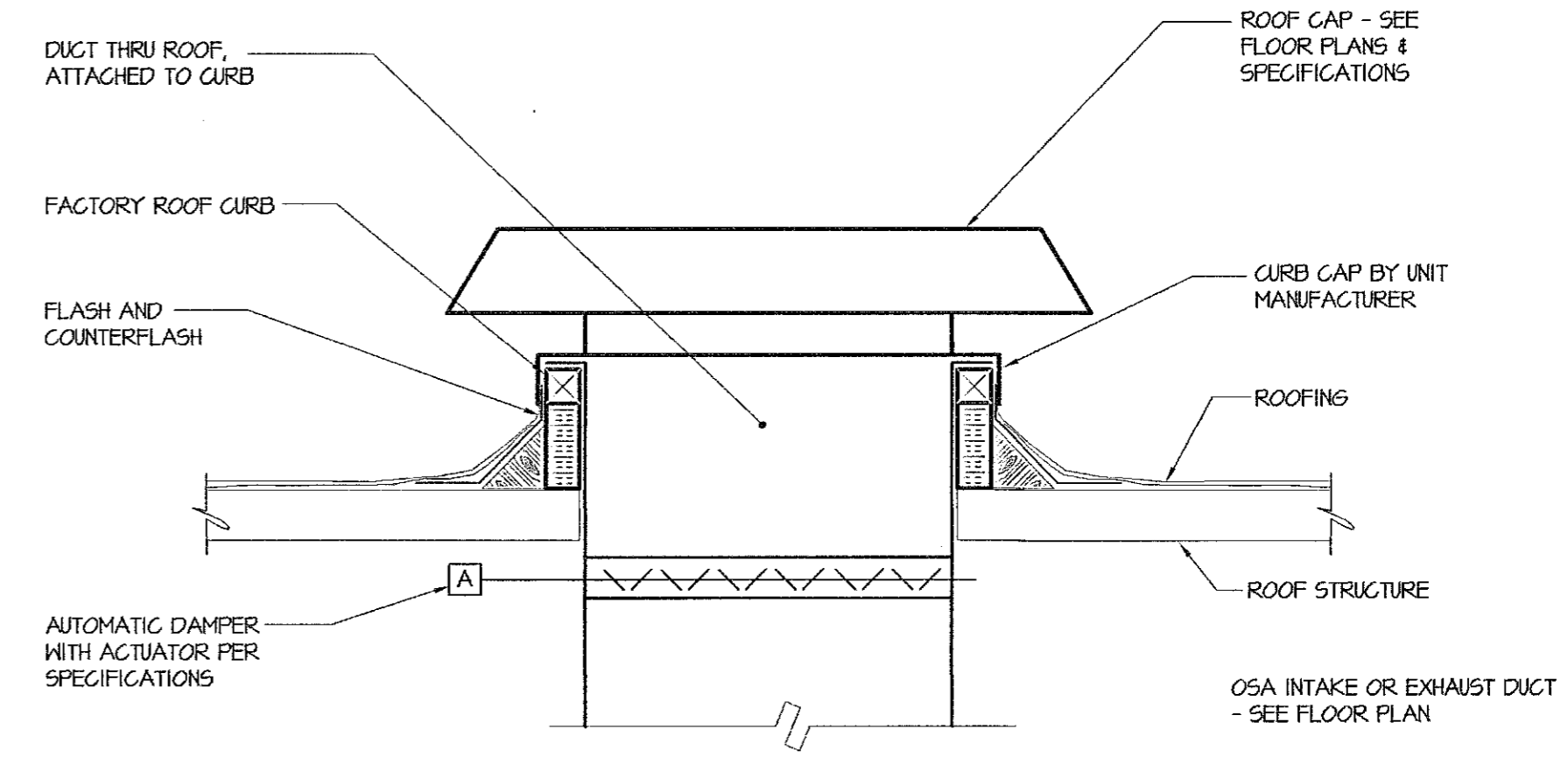
DETAIL NOTES:

1. GAS PIPING LENGTHS ARE APPROXIMATE, BASED ON 2001 AUTZEN STADIUM RENOVATION PROJECT RECORD DRAWINGS.



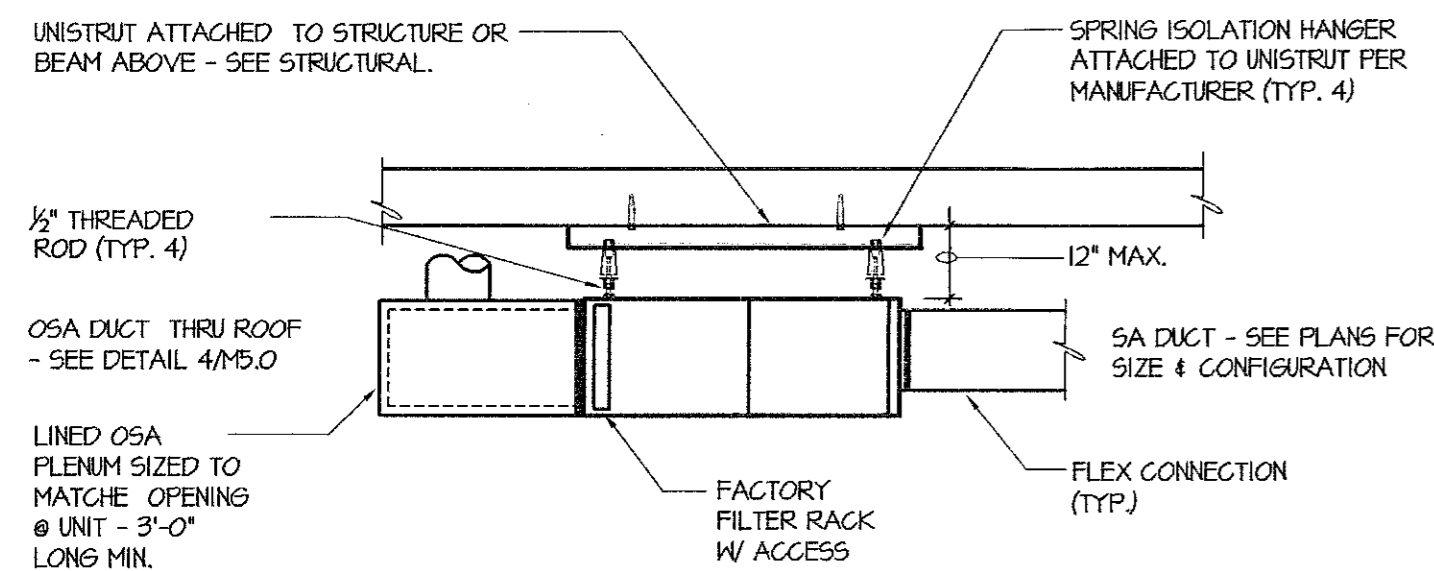
NATURAL GAS CONNECTION SCHEMATIC
NOT TO SCALE

3
M5.0



ROOF CAP
NOT TO SCALE

4
M5.0

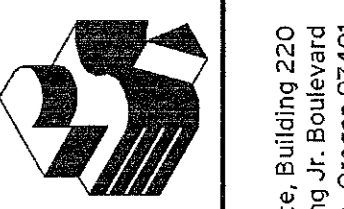


DETAIL NOTES:

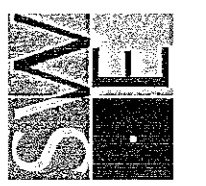
1. INLINE EXHAUST FAN MOUNTING SIMILAR.
2. INSTALLATION SIMILAR FOR SUSPENDED DUCT FURNACE WITHOUT VIBRATION ISOLATORS.

CABINET FAN INSTALLATION
NOT TO SCALE

5
M5.0



Robertson Sherwood Architects pc
132 East Broadway, Suite 540
Eugene, Oregon 97401
P 541.342.8077
F 541.345.4302
www.robertsonsherwood.com



SYSTEMS WEST ENGINEERS, INC.
411 High Street
Eugene, Oregon 97401-2427
541.342.7210
systemswestengineers.com

DETAILS & DIAGRAMS

Drawn By	SJS
Checked	GNL
Date	15 MAR 2013
Project	1227

M5.0

Autzen East Gate, Building 220
2775 Martin Luther King Jr. Boulevard
Eugene, Oregon 97401

UO Autzen Visitor Locker Room Renovation

SWE Project No.: N035.01
File: m5.0_dt

SYMBOLS AND ABBREVIATIONS LEGEND

DIVISION 26 05 19: LOW-VOLTAGE ELECTRICAL CONDUCTORS & CABLES

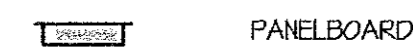
- NEW CONCEALED RACEWAY AND WIRE. NUMBER OF SLASHES INDICATES NUMBER OF CONDUCTORS IF MORE THAN TWO. SIZE OTHER THAN #12 AS NOTED. (APPLIES TO ALL WIRING SYMBOLS)
- HOMERUN
- EXISTING RACEWAY AND WIRE.
- SIGNAL WIRING. F = FIRE ALARM, I = INTERCOM, C = LOW VOLTAGE CONTROL, T = TELEPHONE, D = DATA, TV = TELEVISION, P = CLOCK PROGRAM, PC = PHOTO CONTROL

DIVISION 26 05 26: GROUNDING & BONDING FOR ELECTRICAL SYSTEMS



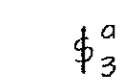
GROUND

DIVISION 26 24 16: PANELBOARDS

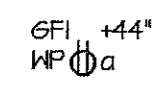


PANELBOARD

DIVISION 26 27 26: WIRING DEVICES



SWITCH. "1" = CIRCUITS CONTROLLED, "K" = KEY SWITCH, "P" = W/PILOT LIGHT, "2" = DOUBLE POLE, "3" = THREE-WAY, "M" = AUTOMATIC WALL SWITCH, "D" = DIMMING SWITCH, "TS" = DIGITAL TIMER SWITCH



DUPLEX RECEPTACLE - "MP" = HEATHERPROOF, "GFI" = GROUND FAULT INTERRUPTER TYPE, "H" = MOUNTING HEIGHT, "A" = CIRCUIT A, "ISO" = WITH ISOLATED GROUND, "SRG" = WITH SURGE SUPPRESSION, "TP" = TAMPER PROOF COVER, "L" = LOCKING

DIVISION 26 51 00: LIGHTING FIXTURES

- AI: FIXTURE IDENTIFIER - FIXTURE TYPE "AI" SEE LIGHTING FIXTURE SCHEDULE.
- RECESSED FLUORESCENT - SHADING INDICATES EMERGENCY BATTERY BALLAST (APPLIES TO ALL LUMINAIRES)
- FLUORESCENT LUMINAIRE IN 4', 8', & 12' LENGTHS, MOUNTED END-TO-END WHERE SHOWN
- WALL-MOUNTED FLUORESCENT FIXTURES
- WALL MOUNT FIXTURE
- SURFACE/PENDANT DOWNLIGHT
- RECESSED DOWNLIGHT
- UNIVERSAL MOUNT EXIT LIGHT, SHADED SIDE INDICATES FACE OR FACES.

DIVISION 26 09 23: LIGHTING CONTROL EQUIPMENT

- POWER PACK
- CEILING MOUNTED MOTION SENSOR COMPLETE SYSTEM WITH POWER PACK.
- EMERGENCY LIGHTING RELAY

DIVISION 28 13 00: ACCESS CONTROL

- CARD READER

DIVISION 27 20 00: DATA COMMUNICATIONS

- COMBINATION PHONE/DATA PORT
- TELEPHONE PORT
- TV OUTLET

DIVISION 28 31 00: FIRE DETECTION & ALARM

- FIRE ALARM SYSTEM MANUAL PULL STATION
- FIRE ALARM SYSTEM HORN W/ STROBE LIGHT. MOUNT @ 80" A.F.F.
- FIRE ALARM STROBE

DIVISION 26 29 13: MOTOR & CIRCUIT DISCONNECTS

- COMBINATION MOTOR STARTER/DISCONNECT SWITCH
- DISCONNECT SWITCH

GENERAL

- EQUIPMENT IDENTIFIER, EXHAUST FAN I SHOWN
- SHEET REFERENCE NOTE
- PLAN OR DETAIL NUMBER SHEET NUMBER
- ROOM NUMBER
- EXISTING WORK SHOWN LIGHT
- NEW WORK SHOWN BOLD
- EXISTING TO BE REMOVED

GENERAL NOTES:

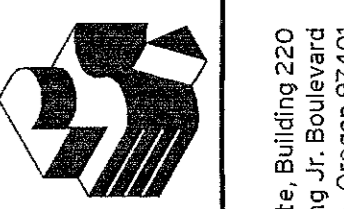
- THE FACILITY WILL REMAIN IN OPERATION DURING CONSTRUCTION. COORDINATE ALL SHUTDOWNS AND CONSTRUCTION ACTIVITY WITH FACILITIES STAFF.
- SIZE AND LOCATION OF ALL EXISTING ELECTRICAL EQUIPMENT IS APPROXIMATE. CONTRACTOR SHALL SITE VERIFY THE EXACT LOCATION OF EXISTING AND CONSTRUCT ALL WORK FROM FIELD DIMENSIONS. CONTRACTOR SHALL MAKE ADJUSTMENTS NECESSARY TO ACCOMMODATE MINOR DEVIATIONS AT NO COST TO OWNER.
- LIGHT LINE WORK INDICATES EXISTING ELECTRICAL CIRCUITRY AND OTHER ELECTRICAL EQUIPMENT. DASHED LINE WORK INDICATES ELECTRICAL DEVICES AND EQUIPMENT TO BE REMOVED.
- WHERE EXISTING EQUIPMENT IS REMOVED AND NOT REPLACED IN THE SAME LOCATION, PATCH AND PAINT SURFACES TO MATCH ORIGINAL CONDITION.
- REMOVE ALL ABANDONED RACEWAY AND WIRING.
- RECONNECT ALL CIRCUITRY TO REMAINING DEVICES AND EQUIPMENT.

ABBREVIATIONS

- | | | | |
|-------|-----------------------------|------|---------------------------------|
| AF | ABOVE FINISHED | GFI | GROUND FAULT INTERRUPTER |
| BLDG | FLOOR BLDG | GND | GROUND HEATING |
| C | CONDUIT | HVAC | VENTILATING, & AIR CONDITIONING |
| CKT | CIRCUIT | MECH | MECHANICAL |
| DIM | 0-10V DIMMING | (N) | NEW |
| (E) | EXISTING | PNL | PANEL |
| ELEC | ELECTRICAL | FRS | PROGRAM RAPID START |
| EMERG | EMERGENCY FIRE ALARM MASTER | HP | HEATHERPROOF |

LUMINAIRE SCHEDULE

TYPE	DESCRIPTION	EXAMPLE MANUFACTURER	LAMP	NOTES
'A'	SURFACE MOUNT 1x4 WET LOCATION	LITHONIA DMH 2 32, 1MVOLT 660105	2 32T8 4000 K	MOUNTING :SURFACE MOUNT HOUSING :FIBERGLASS, WHITE LENS/REFL:ACRYLIC VOLTAGE :1MVOLT BALLAST :ELECTRONIC PFS 10% THD MISC :UL LISTED FOR WET LOCATION (...50 W...)
'B'	SURFACE MOUNT 1x4	LITHONIA M 2 32, 1MVOLT (SAME TYPE AS FIXTURES OF MAIN LOCKER ROOM 186)	2 32T8 4000 K	MOUNTING :SURFACE MOUNT HOUSING :FIBERGLASS, WHITE LENS/REFL:ACRYLIC VOLTAGE :1MVOLT BALLAST :ELECTRONIC PFS 10% THD MISC : (...50 W...)
'C'	SURFACE MOUNT 4x4	KENALL HRRFL	1 18Q 4000 K	MOUNTING :SURFACE MOUNT HOUSING :FIBERGLASS, WHITE LENS/REFL:ACRYLIC VOLTAGE :2TV BALLAST :ELECTRONIC PFS 10% THD MISC :UL LISTED FOR WET LOCATION (...21 W...)

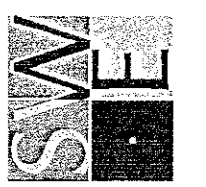


Robertson Sherwood Architects pc
www.robertsonsherwood.com

P 541 | 342.8077
F 541 | 345.4302

132 East Broadway, Suite 540
Eugene, Oregon 97401

UO Autzen Visitor Locker Room Renovation
Autzen East Gate Building 220
2775 Martin Luther King Jr. Boulevard
Eugene, Oregon 97401



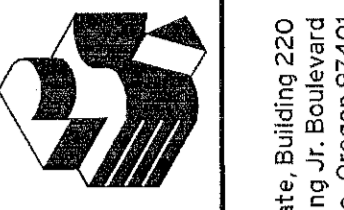
SYSTEMS WEST ENGINEERS, INC.
411 High Street
Eugene, Oregon 97401-2427
541.342.7210
systemswestengineers.com

SWE Project No.: N035.01
File: 601_jg

LEGEND & SCHEDULE

Drawn By: DVN
Checked: JLG
Date: 15 MAR 2013
Project: 1227

E0.1



Autzen East Gate, Building 220
2775 Martin Luther King Jr. Boulevard
Eugene, Oregon 97401

Robertson Sherwood Architects pc
www.robertsonsherwood.com
P 541 | 342.8077
F 541 | 345.4302

UO Autzen Visitor Locker Room Renovation

SWE
SYSTEMS WEST ENGINEERS, INC.
411 High Street
Eugene, Oregon 97401-2427
541-542-7210
systemswestengineers.com

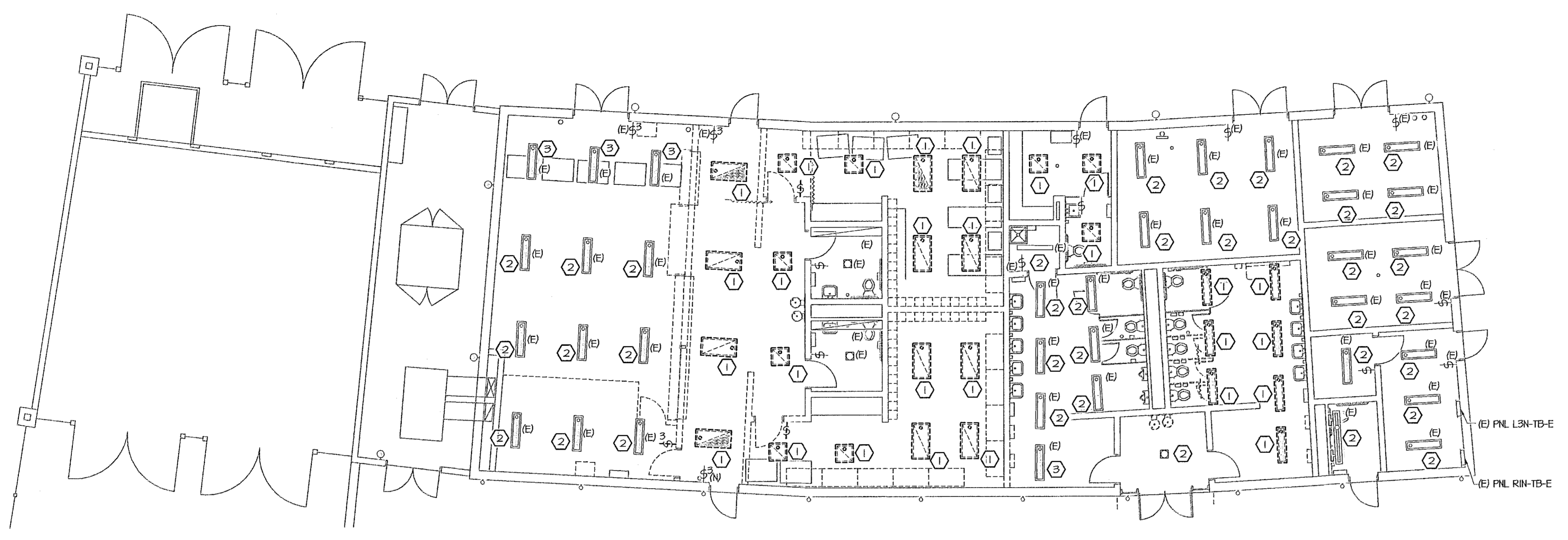
SWE Project No.: N033.01
File: e1.1_lplgg

**GROUND FLOOR PLANS
LIGHTING**

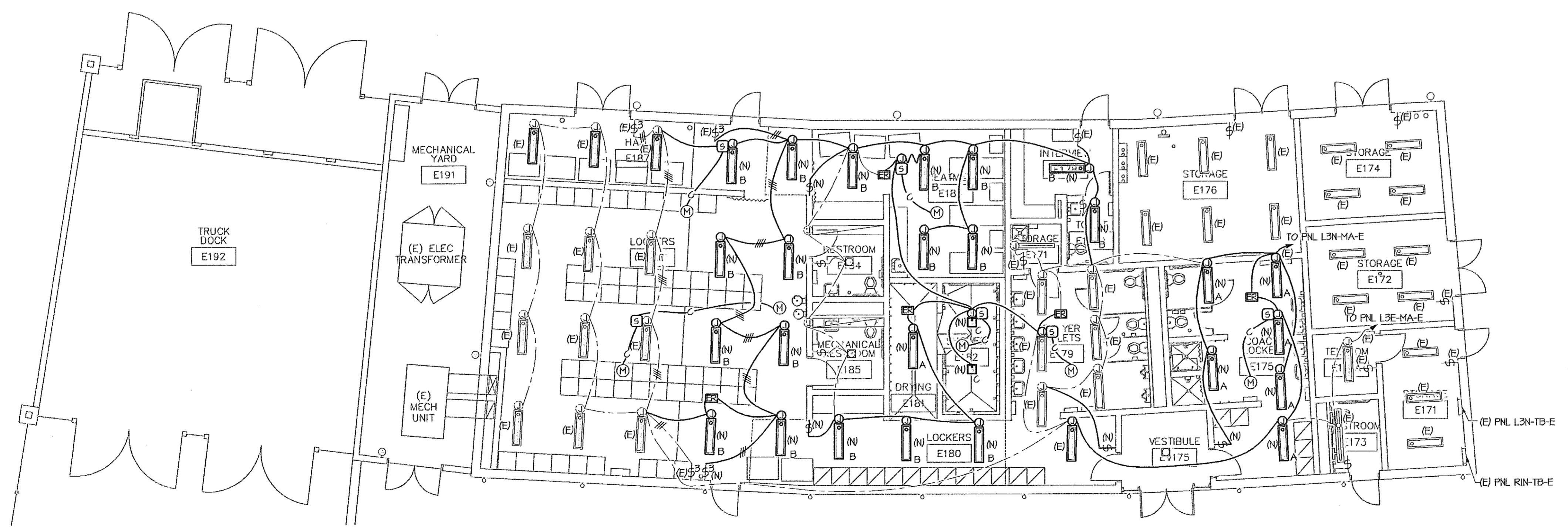
Drawn By	DVN
Checked	JLG
Date	15 MAR 2013
Project	1227

E1.1

- REFERENCE NOTES:
- 1 FIXTURES TO BE REMOVED.
 - 2 EXISTING FIXTURES TO REMAIN.
 - 3 EXISTING FIXTURES TO BE RELOCATED. EXTEND CIRCUITRY TO NEW LOCATION.
 - 4 CONNECT RELOCATED FIXTURES AND NEW FIXTURES TO EXISTING CIRCUITRY.
 - 5 EXISTING CIRCUITRY TO REMAIN AND EXTEND TO NEW FIXTURES LOCATION.
 - 6 REUSE ALL LIGHTING FIXTURES.

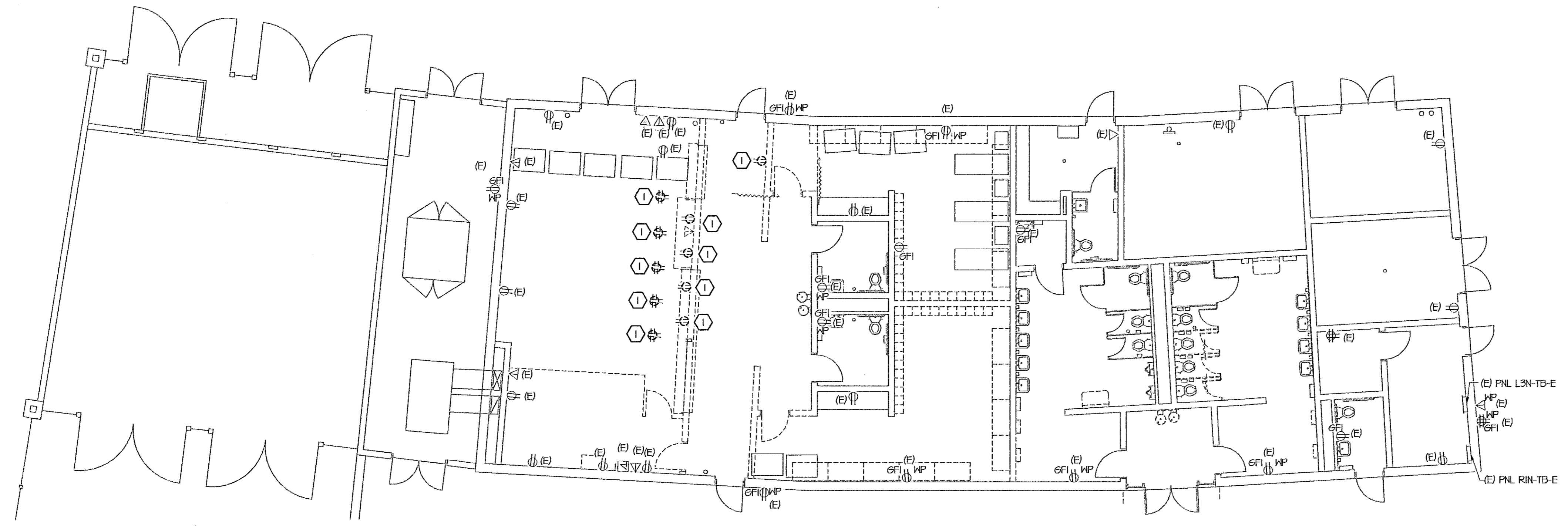


5 6 GROUND FLOOR LIGHTING PLAN - EXISTING 1
SCALE: 1/8" = 1'-0" E1.1



ELECTRICAL ROOM 3
SCALE: 1/8" = 1'-0" E1.1

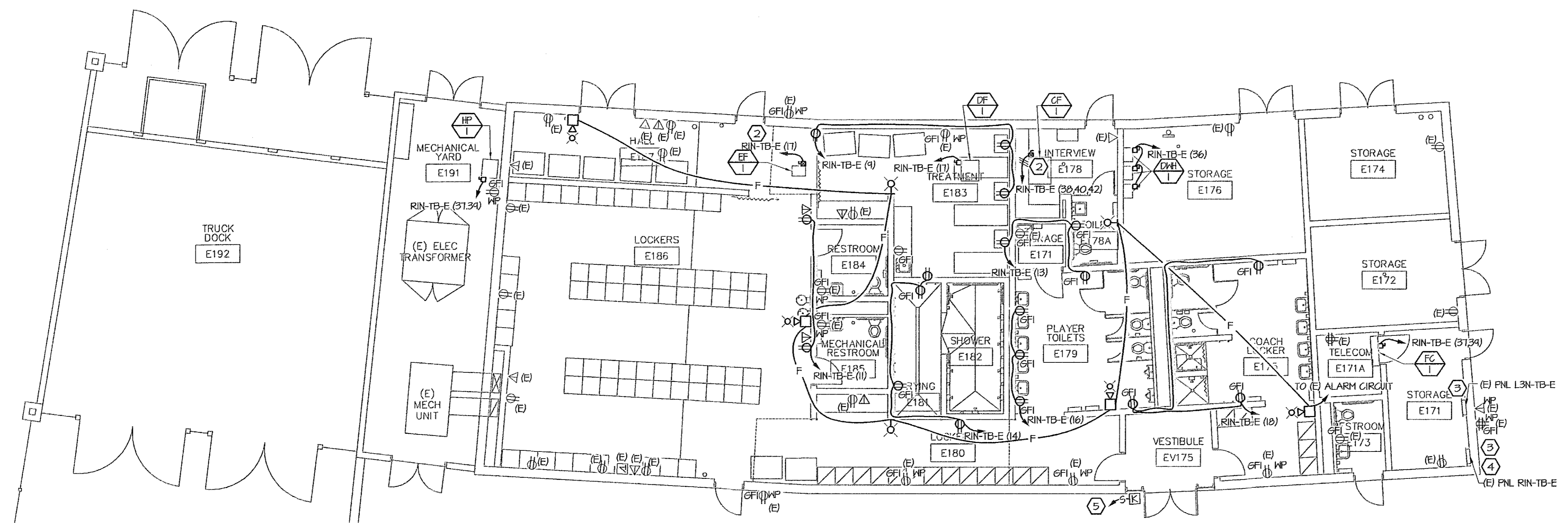
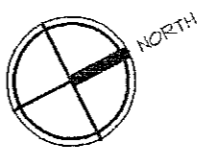
4 GROUND FLOOR LIGHTING PLAN - REMODEL 2
SCALE: 1/8" = 1'-0" E1.1



GROUND FLOOR POWER AND COMMUNICATION PLAN - EXISTING

SCALE: 1/8" = 1'-0"

1
E1.2



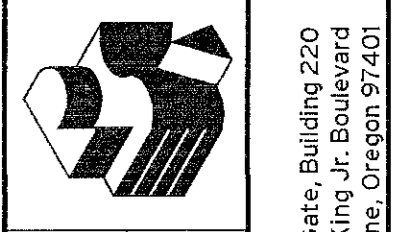
GROUND FLOOR POWER AND COMMUNICATION PLAN - REMODEL

SCALE: 1/8" = 1'-0"

2
E1.2



- REFERENCE NOTES:
- ① RECEPTACLE AND DATA OUTLET TO BE REMOVED.
 - ② FOR STARTER, SEE MECH.
 - ③ MOVE "AV CONTROLLER" CIRCUITRY FROM BREAKER #31 TO BREAKER #34 AND USE THE BREAKER #34 WITH "EAST GATE CONTROLLER".
 - ④ PROVIDE 15A/3P FOR CF-1, 15A/2P FOR HP-1 AND FC-1, 15AMP FOR DF-1 AND EF-1.
 - ⑤ CONNECT TO (E) ACCESS CONTROL EQUIPMENT.



Robertson Sherwood Architects pc
 132 East Broadway, Suite 540
 Eugene, Oregon 97401
 P 541 342.8077
 F 541 345.4302
 www.robertsonsherwood.com

UO Outzen Visitor Locker Room Renovation
 Outzen East Gate Building 220
 2775 Martin Luther King Jr. Boulevard
 Eugene, Oregon 97401

SYSTEMS WEST ENGINEERS, INC.
 411 High Street
 Eugene, Oregon 97401-2427
 Phone: 541.342.7210
 systemswestengr.com

SWE Project No.: N033.01
 File: e1.2_ppwrcm

**GROUND FLOOR PLANS
 POWER & COMMUNICATIONS**

Drawn By	DVN
Checked	JLG
Date	15 MAR 2013
Project	1227

E1.2