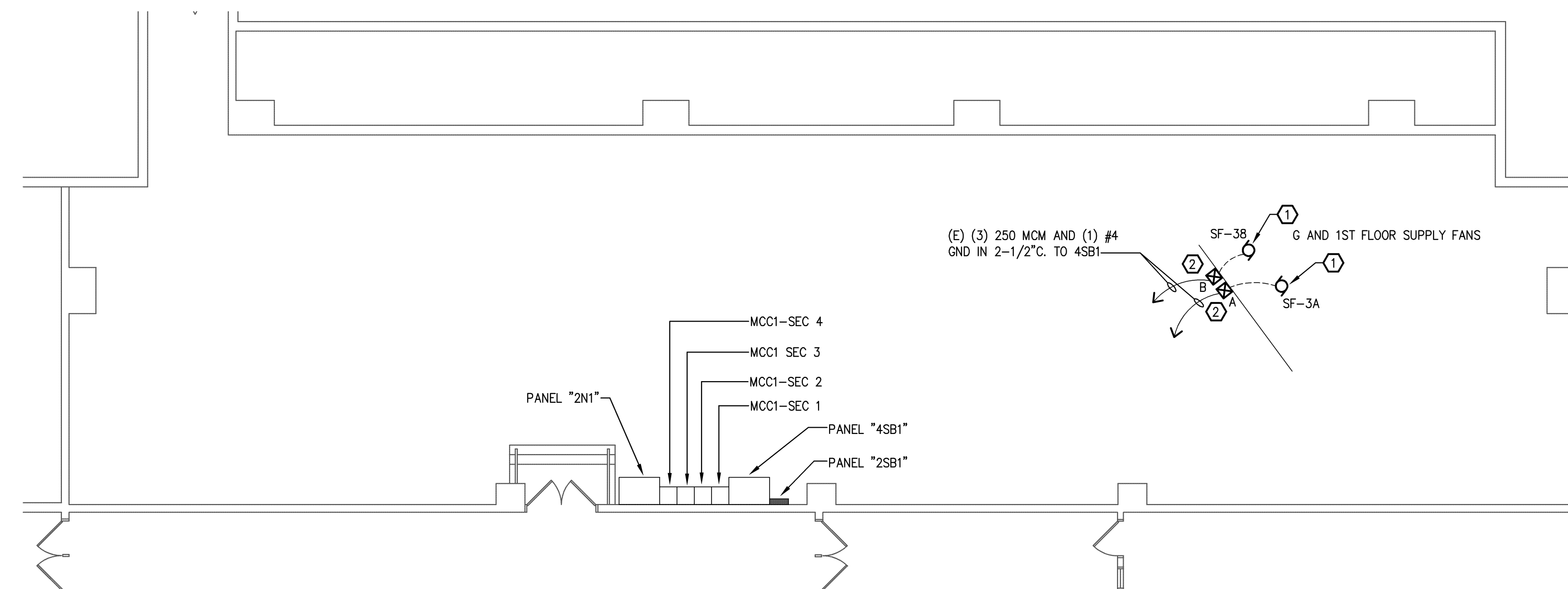




BALZHISER & HUBBARD ENGINEERS

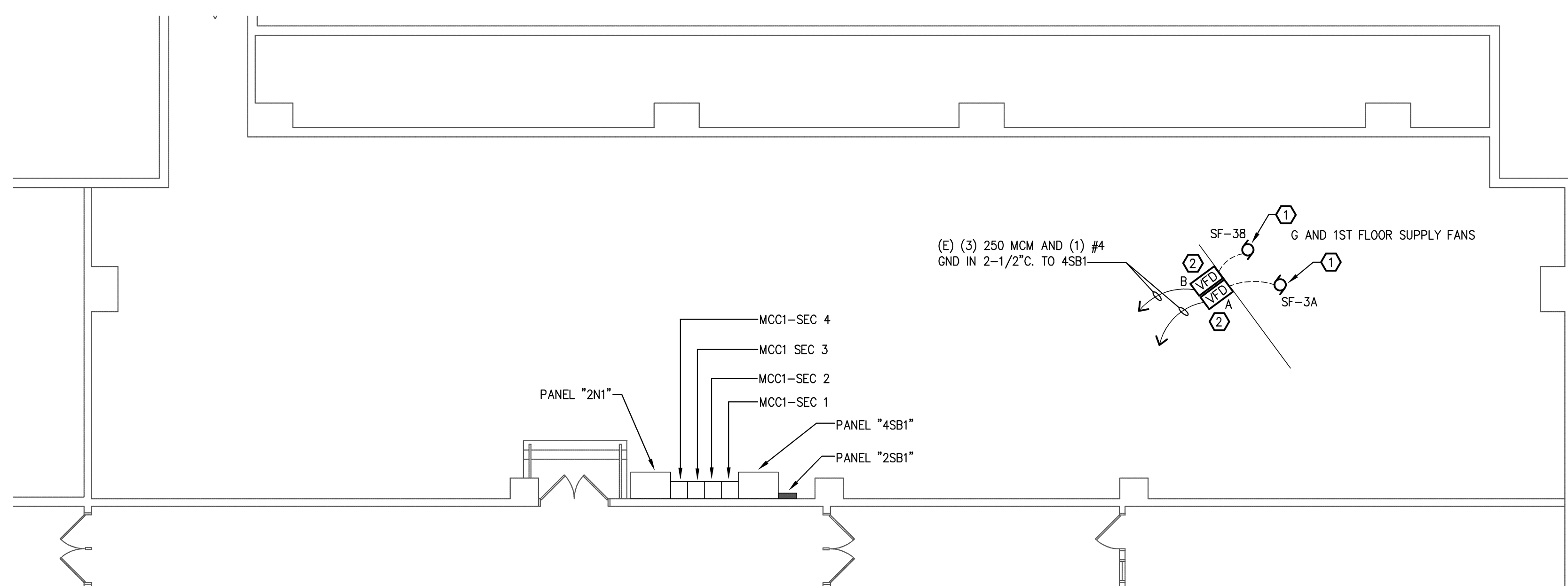
MECHANICAL
ELECTRICAL
CIVIL
SURVEYORS

100 WEST 15TH AVENUE
EUGENE, OR 97401
P: 541-686-8478
F: 541-345-3303



- DEMOLITION NOTES:**
- ① REMOVE SUPPLY FAN MOTORS, WIRING SHALL REMAIN TO SERVE NEW MOTOR IN SAME LOCATION.
 - ② REMOVE STARTER. WIRING SHALL REMAIN TO SERVE NEW VARIABLE FREQUENCY DRIVE IN SAME LOCATION.

1 BASEMENT PLAN - DEMOLITION
SCALE: 1/8"=1'-0"



- NEW WORK NOTES:**
- ① PROVIDE NEW SUPPLY FAN MOTOR WITH AEGIS SHAFT GROUNDING RING. USE EXISTING WIRING TO SERVE NEW MOTOR. BASIS OF DESIGN: BALDOR ODP PREMIUM EFFICIENCY MOTOR, MODEL #EM2547T.
 - ② PROVIDE NEW VARIABLE FREQUENCY DRIVE. USE EXISTING WIRING TO SERVE VFD. BASIS OF DESIGN: ABB, MODEL #ACH550-UH-178A-2.

2 BASEMENT PLAN - NEW WORK
SCALE: 1/8"=1'-0"

MECHANICAL EQUIPMENT CONNECTION SCHEDULE															
TAG	LOCATION	DESCRIPTION	VOLTAGE	PHASE	HP	KW	AMP	FEEDER DESCRIPTION	CIRCUIT BREAKER	STARTER	STARTER SIZE	DISCONNECT	VFD	NOTES	
SF-3A		SUPPLY FAN	208	3	60		169.4	3 #250 CU, 1 #4 GND. IN 2-1/2"C.	400/3	NA	NA	DIV 26	DIV 26	1,2	
SF-3B		SUPPLY FAN	208	3	60		169.4	3 #250 CU, 1 #4 GND. IN 2-1/2"C.	400/3	NA	NA	DIV 26	DIV 26	1,2	

NOTES:
 1. UTILIZE EXISTING FEEDER AND CIRCUIT BREAKER, PREVIOUSLY SERVING REMOVED STARTER AND SUPPLY FAN, TO SERVE NEW VFD AND SUPPLY FAN MOTOR.
 2. PROVIDE MOTORS CAPABLE OF OPERATING AT 208V AND 480V.

PROJECT TITLE
**UNIVERSITY OF OREGON
KLAMATH HALL VFD REPLACEMENT**

SHEET TITLE
**BASEMENT PLAN - DEMOLITION
AND NEW WORK**

DATE
10/5/12

DESIGNER
MBR

PROJECT
8900-004-12

FILENAME
8900-004-12e1.dwg

SHEET NO
E1