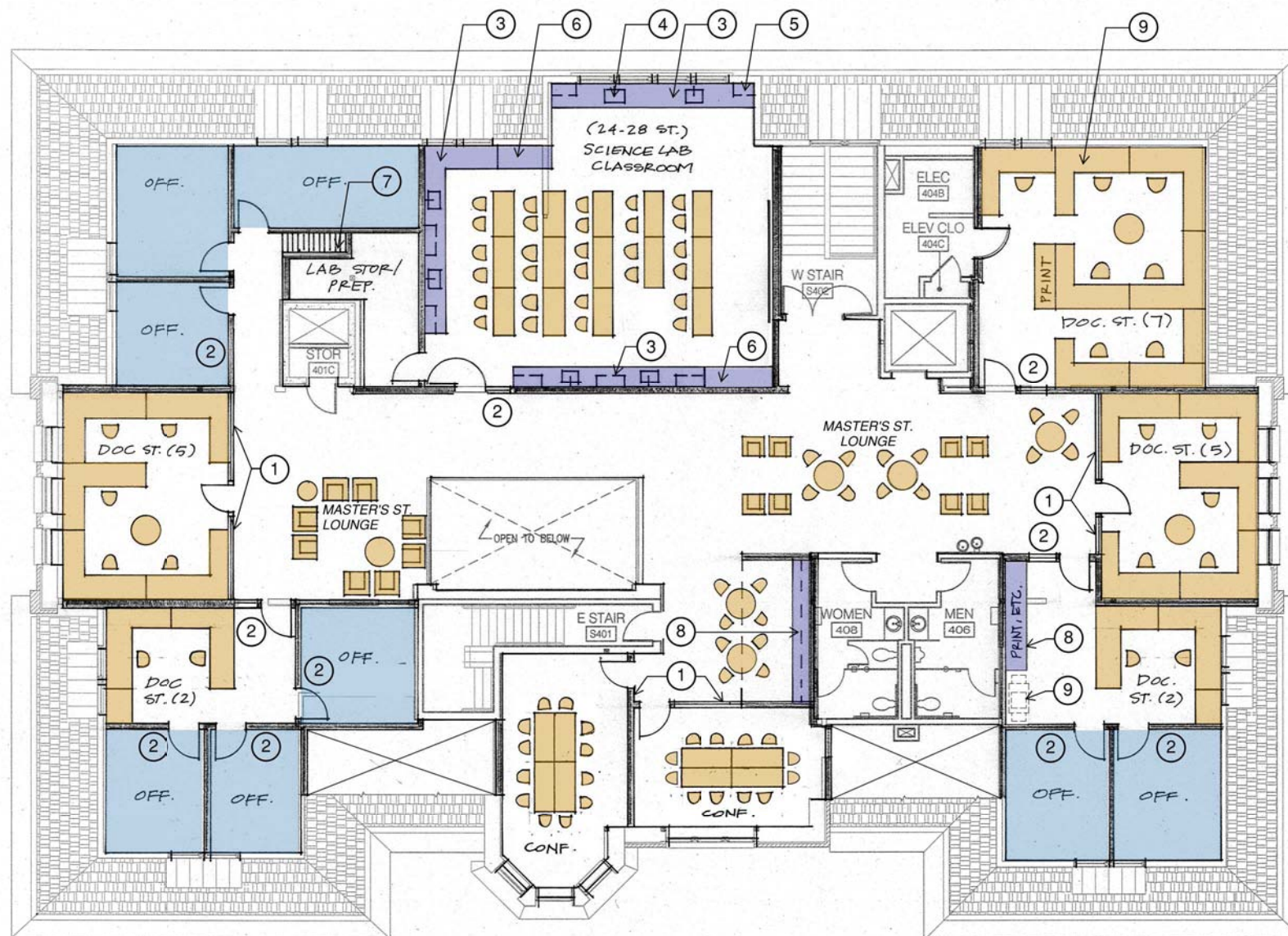


KEYNOTES

- ① BUTT-GLAZED SUITE ENTRY
- ② TYPICAL RELITE
- ③ CHEMICAL-RESISTANT PLASTIC LAMINATE LAB CASEWORK WITH CHEMICAL-RESISTANT SOLID SURFACE
- ④ INTEGRAL SOLID SURFACE LAB SINK (TYPICAL OF 6)
- ⑤ OVERHEAD CABINETS WITH GLAZED DOOR FRONTS (TYPICAL OF 7)
- ⑥ FULL-HEIGHT CHEMICAL-RESISTANT PLASTIC LAMINATE CABINETS WITH GLAZED DOOR FRONTS
- ⑦ EXISTING ROOF STAIR
- ⑧ PLASTIC LAMINATE CASEWORK
- ⑨ COPIER

LEGEND

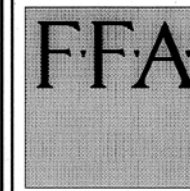
- ENCLOSED OFFICES
- BUILT-IN CASEWORK
- FURNITURE (BY OSU)



	HAVE	NEED	Δ
4TH FLOOR SPACES ONLY:			
FACULTY OFFICES:	8	12	-4
DOCTORAL STUDENTS:	21	25	-4
MASTERS/LOUNGE:	36	25	11
ADMIN. ASSIST.	0	0	0
TOTAL INCLUDING 2ND & 3RD FLOOR SPACES:			
FACULTY OFFICES:	12	12	0
DOCTORAL STUDENTS:	25	25	0

1 **FOURTH FLOOR PLAN**
NOT TO SCALE

APRIL 8, 2011



FLETCHER FARR AYOTTE INC.
ARCHITECTURE PLANNING INTERIORS
529 SW YAMHILL STREET, SUITE 900
PORTLAND, OREGON 97204 U.S.A.
PHONE: (503) 222-1461 FAX: (503) 222-1701
WWW.FFADESIGN.COM



Oregon State University
130 Oak Creek Building
Corvallis, Oregon
97331-2001
(541) 737-4921

REVISIONS

SHEET NO. I-24A
OF 86

1

2

3

4

D

C

B

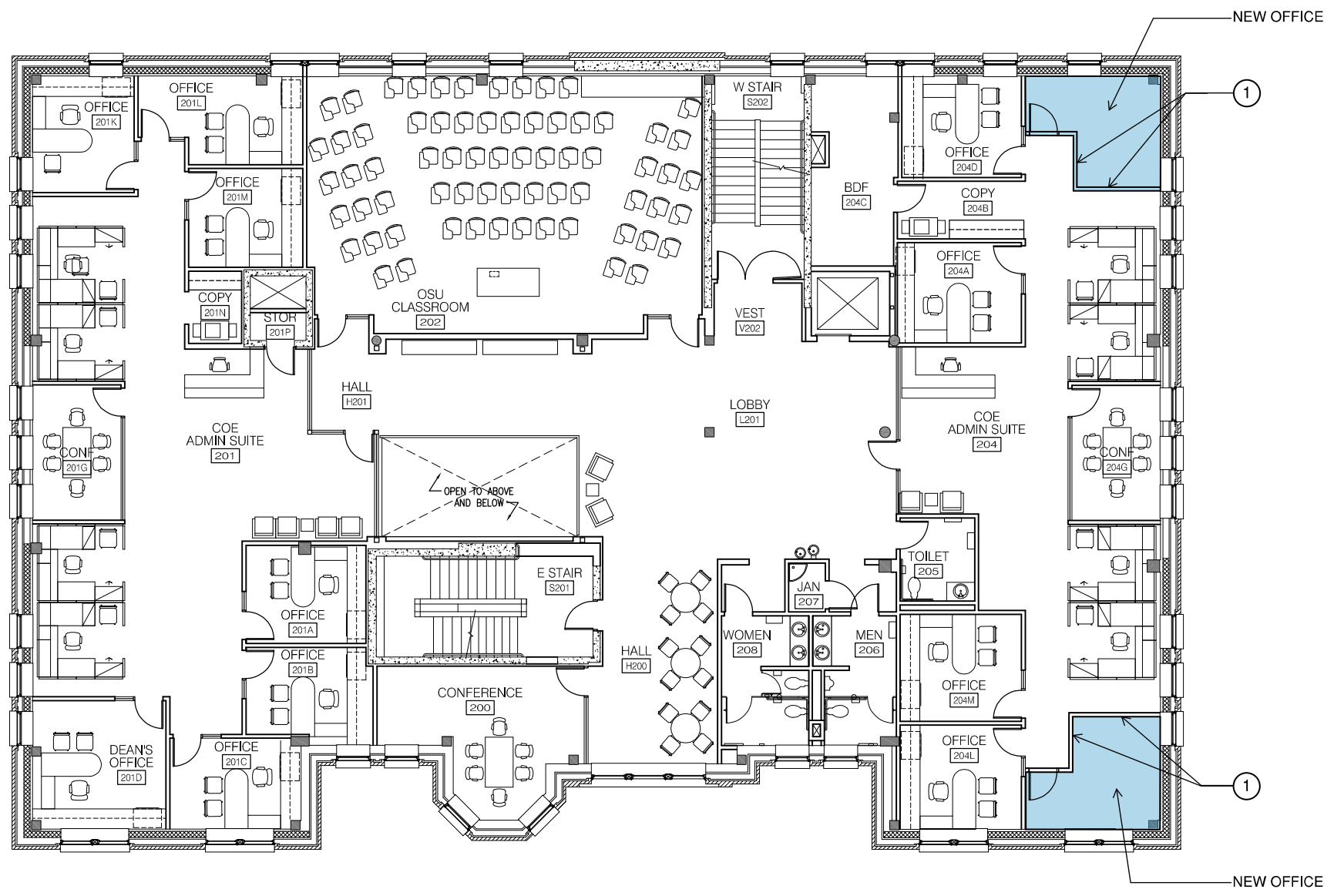
A

KEYNOTES

① NEW OFFICE WALLS, INCLUDE DOOR & RELITE

LEGEND

ENCLOSED OFFICES

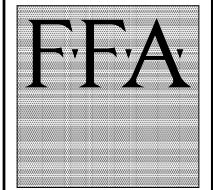


1197-06



OSU EDUCATION HALL
INTERIOR RENOVATION

SECOND FLOOR PLAN
109807



FLETCHER FARR AYOTTE INC.
ARCHITECTURE PLANNING INTERIORS
520 SW VAMHILL STREET, SUITE 900
PORTLAND, OREGON 97204 U.S.A.
PHONE: (503) 222-1661 FAX: (503) 222-1701
WWW.FFADESIGN.COM



Oregon State University
130 Oak Creek Building
Corvallis, Oregon
97331-2001
(541) 737-4921

REVISIONS

SHEET NO. I-22A
OF 86

1 SECOND FLOOR PLAN
NOT TO SCALE

APRIL 8, 2011

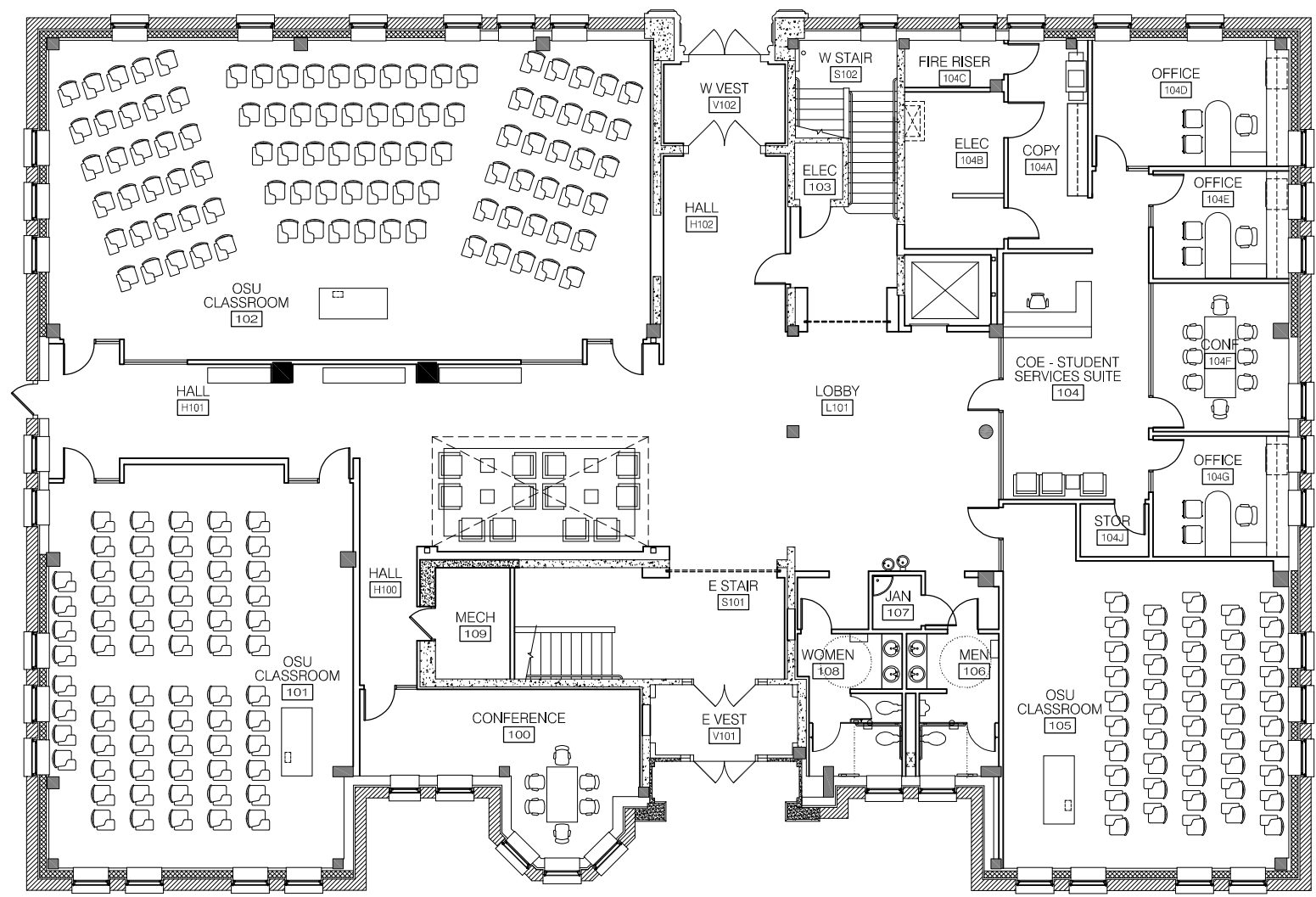


1


2

3

4



1 FIRST FLOOR PLAN
NOT TO SCALE

APRIL 8, 2011 

F.F.A.
FLETCHER FARR AYOTTE INC.
ARCHITECTURE PLANNING INTERIORS
520 SW YAMHILL STREET, SUITE 900
PORTLAND, OREGON 97204 U.S.A.
PHONE: (503) 222-4661 FAX: (503) 222-7101
WWW.FFADESIGN.COM

OSU Facilities Services
Leading to Serve
Oregon State University
130 Oak Creek Building
Corvallis, Oregon
97331-2001
(541) 737-4921

NO.	REVISIONS



4th Floor Lobby



4th Floor Lab Classroom