



**OREGON STATE UNIVERSITY
REQUEST FOR QUOTE (RFQ)**

| | | | | | |
|--|---------------------------------------|---|--|------------------------------|--------------------|
| | | ISSUE DATE: | December 2, 2011 | | |
| RFQ # | DL157494Q | RFQ DUE DATE: | December 9, 2011, 10 AM | | |
| DELIVER TO: | | REQUESTED BY / RETURN QUOTE TO: | | | |
| DEPARTMENT: | Facilities Services | NAME: | Debora Lauer | | |
| ADDRESS: | OSU Nash Hall | E-MAIL: | Debora.Lauer@oregonstate.edu | | |
| CITY, STATE ZIP: | Corvallis, OR 97331 | TELEPHONE: | 541-737-7343 | | |
| REQUIRED DELIVERY DATE: | March 16, 2012 | FAX: | 541-737-2170 | | |
| ITEM | DESCRIPTION | QTY | UNIT | UNIT PRICE | TOTAL PRICE |
| 1 | Reverse Osmosis / DI Water System | 1 | Lot | | |
| | | | | | |
| | SYSTEM SPECIFICATIONS ATTACHED | | | | |
| | OSU WILL INSTALL THE SYSTEM | | | | |
| | SHIPPING MUST BE INCLUDED | | | | |
| | | | | | |
| Delivery is f.o.b. destination, prepaid and allowed. Shipping, freight and handling must be included in quoted prices. Additional costs for such are disallowed. | | | | TOTAL | |
| DELIVERY TIME AFTER RECEIPT OF ORDER: | | | | PRICES VALID THROUGH: | |
| SPECIAL INSTRUCTIONS: | | VENDOR INFORMATION: | | | |
| 1. Unless otherwise specified, all items quoted are to be new, unused and not remanufactured in any way. 2. Brand names are for the purpose of describing and establishing the characteristics desired and are not intended to limit or restrict competition. Quoters may submit quotes for substantially equivalent products unless the RFQ provides that a specific brand is necessary because of compatibility requirements, etc. All such brand substitutions shall be subject to approval by OSU. 3. Quoters must clearly identify all products quoted. Brand name and model or number must be shown. 4. Only documents issued as addenda by OSU serve to change the RFQ in any way. 5. OSU reserves the right to make the award by item, partial or whole lots, groups of items or entire quote, whichever is in the best interest of OSU. 6. OSU may reject any Quote not in compliance with the RFQ, attachments, and addenda, or if it is in the best interest of OSU. | | COMPANY: | | | |
| | | ADDRESS: | | | |
| | | CITY, STATE, ZIP: | | | |
| | | CONTACT NAME: | | | |
| | | E-MAIL: | | | |
| | | TELEPHONE: | | | |
| FAX: | | | | | |
| | | VENDOR SIGNATURE: | | | |
| | | <i>By signature below the undersigned certifies that they are authorized to act on behalf of the quoter and will comply with all aspects of the quote herein.</i> | | | |
| | | SIGNATURE: | | | |
| | | NAME/TITLE: | | | |

This procurement is subject to the indicated Oregon State University Standard Terms and Conditions for: Goods Services Purchase Order Construction Software. The indicated terms and conditions may be viewed at <http://pacs.oregonstate.edu/terms-and-conditions>

Project#: 1296-12

Description: Reverse Osmosis / DI System (NASH)

Control System:

Standard voltage: 480 Volt, 3 Phase, 60 Hertz, 10 Amps

UL 508 A control panel label

Fiberglass Nema Enclosure

Touchscreen controls / Alarm Identification screen

PLC control system

Digital resistivity meter 2 cell (RO quality / DI quality)

Low quality alarm tied into the PLC control system

High level protection tied into the PLC control system

Low level protection tied into the PLC control system

110 Volt outlets to supply power to resistivity indicator light

REVERSE OSMOSIS COMPONENTS: 4+ GPM (Expandable to 9 GPM)

Steel frame / powder coated: Sized to fit thru a 36" door way

1.5 stainless steel multistage pump; Grundfos CRI3-9

Low pressure pump shut-off switch (adjustable)

2.5" x 20" filter housing with differential pressure gauges

Stainless steel control panel

Pre-filter and post-filter pressure gauges: 4 Panel Mount Gauges

3 Hi-flux stainless steel reverse osmosis housings

3 reverse osmosis elements

Stainless steel needle valves

Feed, and concentrate flow meters 3 each (0 - 10 gpm)

Feed and concentration pressure gauges

DI WATER RECIRCULATING SYSTEM: 8 GPM

Steel frame / powder coated: Sized to fit thru a 36" door way

.5 HP stainless steel multistage pump; Grundfos

Ball valve between pump and tank (simplify pump repair / replacement)

Back-pressure regulator valve: Pump protect from clogged filter

Back-pressure regulator valve: By-pass into the tank

2.5" x 20" filter housing with differential pressure gauges (Pre-DI)

2.5" x 20" filter housing with differential pressure gauges (Post-DI)

Resistivity indicator light for (1st Mixed Bed Tank)

Plumbing material (PVC schedule 80 and Polyethylene tubing)

High pressure DI compatible hose for DI tanks

TANK AND ACCESSORIES:

(2) 300 gallon tank: 36" x 78" (Size may vary)

Bulk head fittings for tank penetrations

.5" polypropylene float switches

2.5" x 10" clear filter housing (1 micron to pre-filter air)

Connection plumbing to cycle water through both tanks

SPILL CONTAINMENT HIGH LEVEL AND ALARM SYSTEM PACKAGE:

Polypropylene spill containment tray: Welded on sight
Float switch located in spill tray tied to PLC controls
1" Actuator valve tied to high level alarm (shut-off supply water)

ULTRAVIOLET LAMP ASSEMBLY

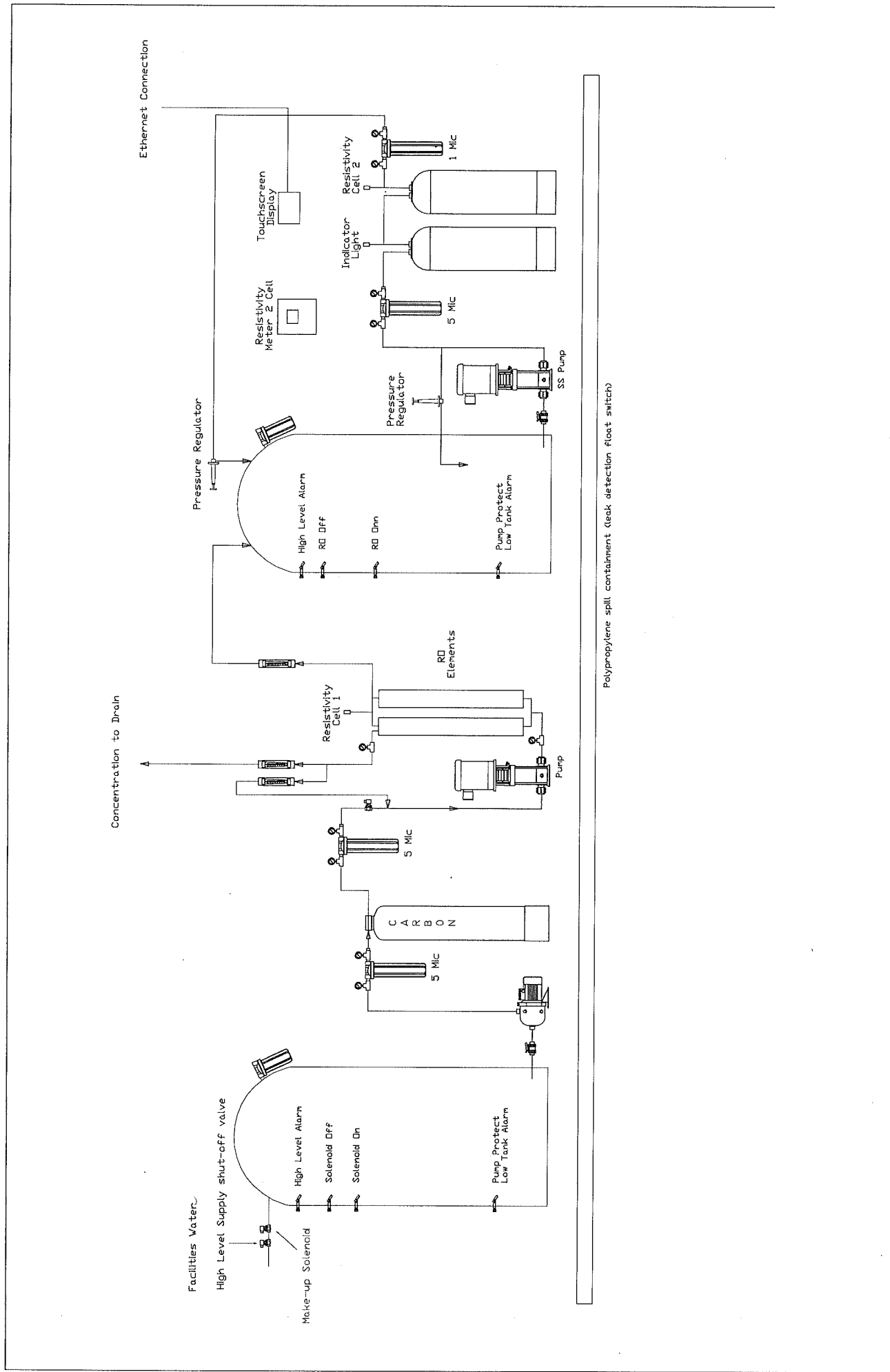
6 GPM unit
Stainless steel construction
Pre-installed and integrated into the DI delivery system

DIGITAL CHART RECORDER (6 Inputs to record events)

Chart RO quality
Chart DI quality
Ethernet connect on status of water quality (Remote Location)
* Remote viewing from PC with proprietary softener (6 Data Points)

INCOMING WATER STORAGE TANK w/BOOSTER PUMP

300 gallon storage tank
Variable frequency pump to boost pressure
Ball valve between pump and tank (simplify pump repair / replacement)
1" Make-up solenoid valve
2.5" x 20" Pre-filter (with differential pressure gauges)



Polypropylene spill containment (leak detection float switch)