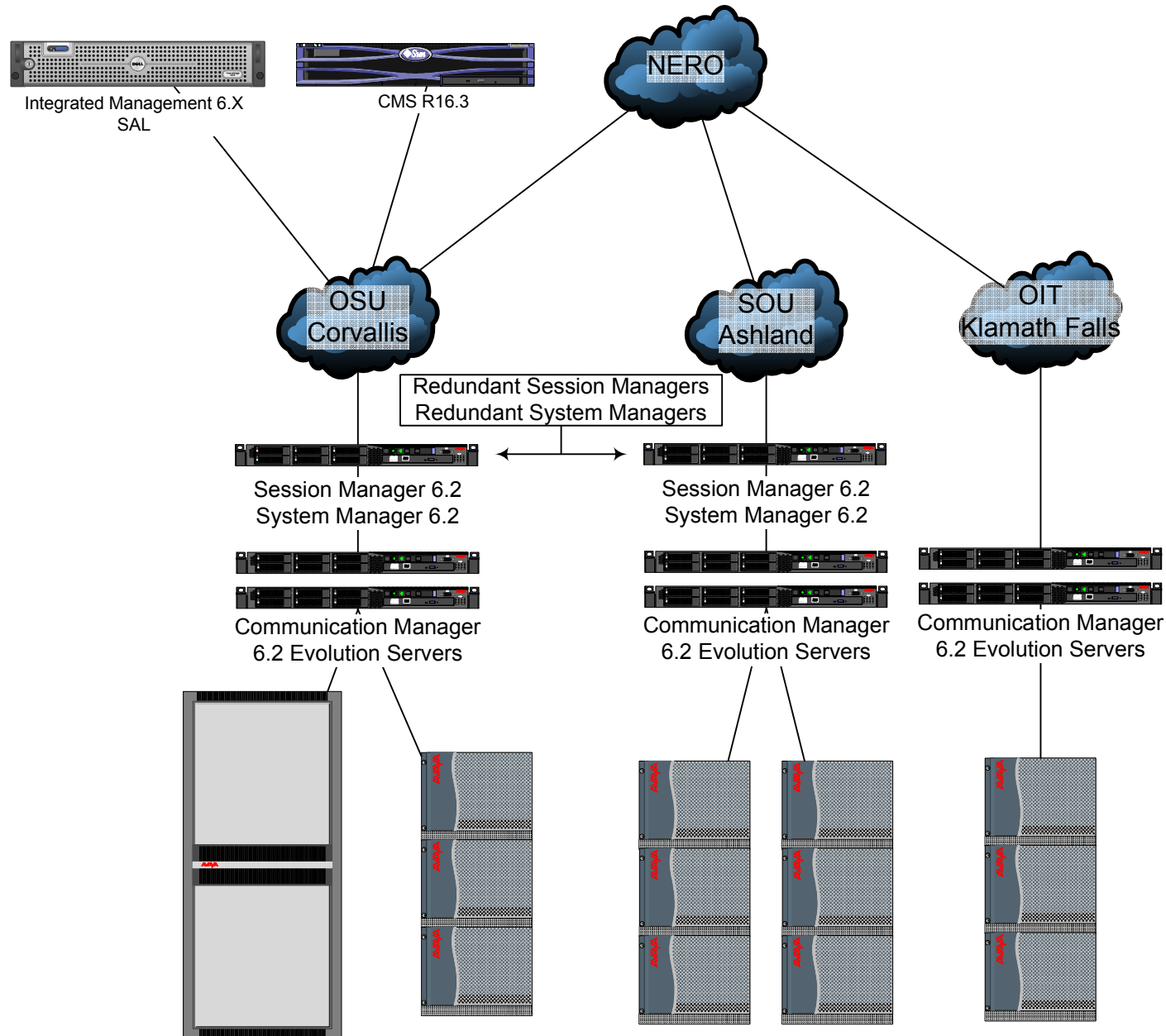


OUS Aura 6 Architecture

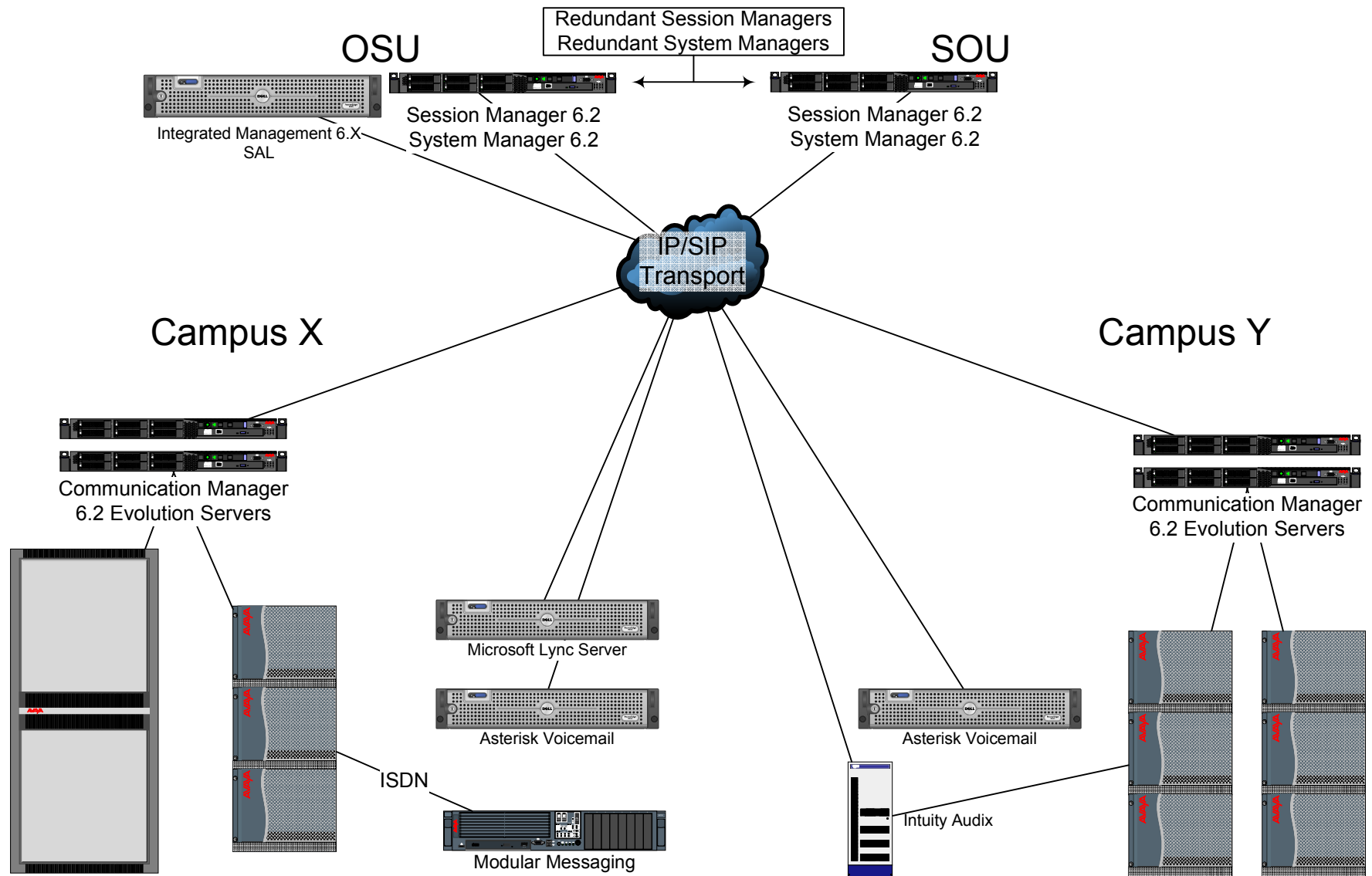
*High level view of new servers and/or services

*Does not include all servers and services

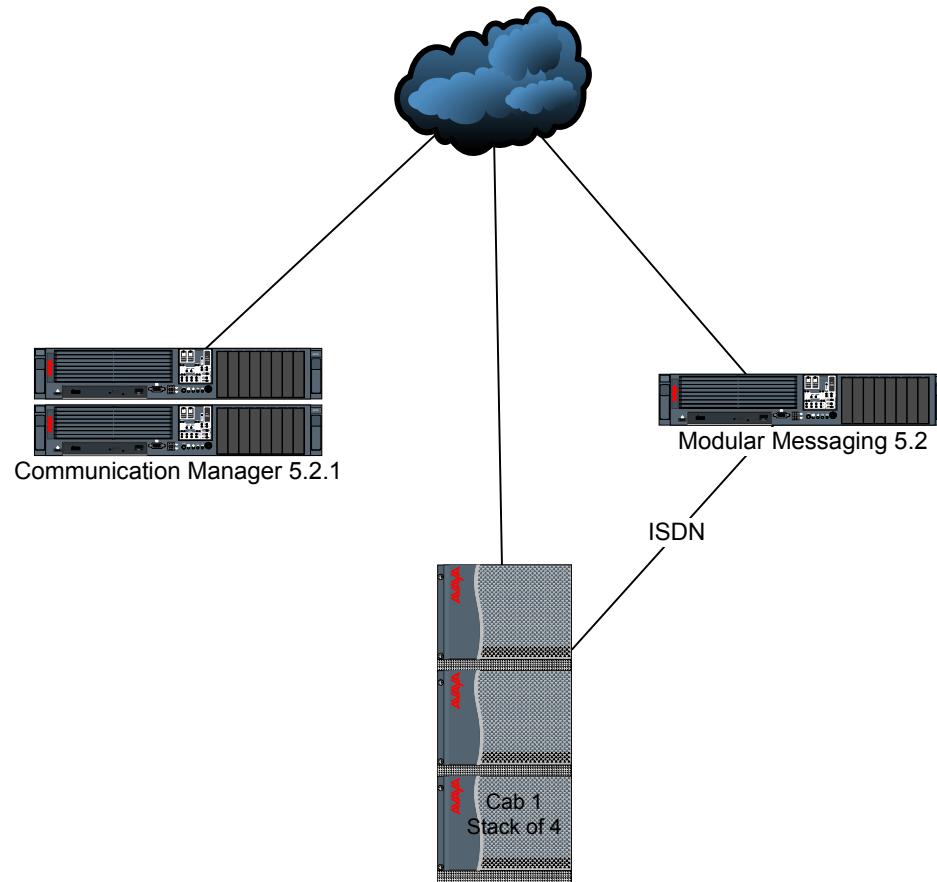


General Overall Architecture

*Generic depiction of the varied nature of the OUS network
*Does not include all servers and services



Current OIT Configuration

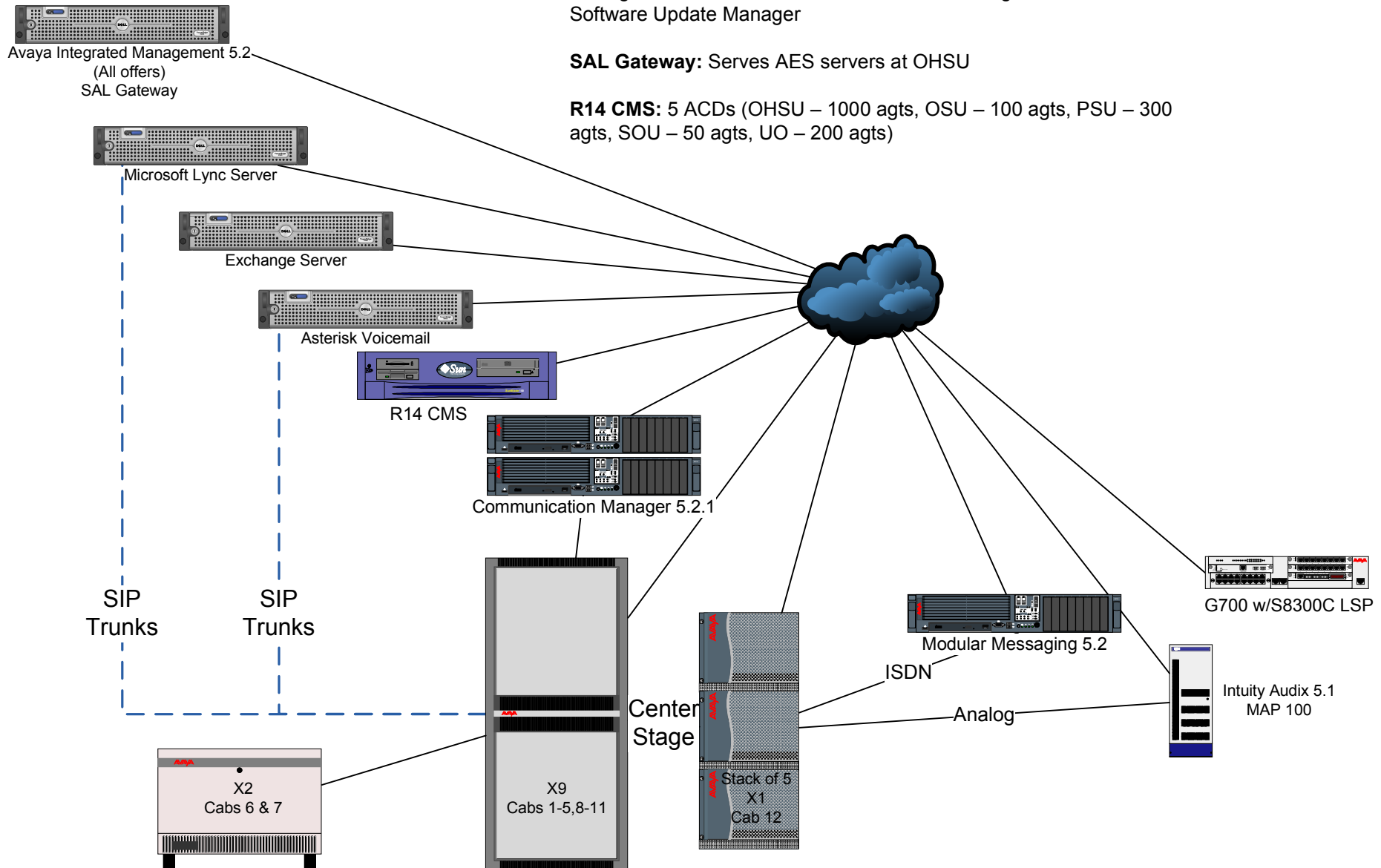


Current OSU Configuration

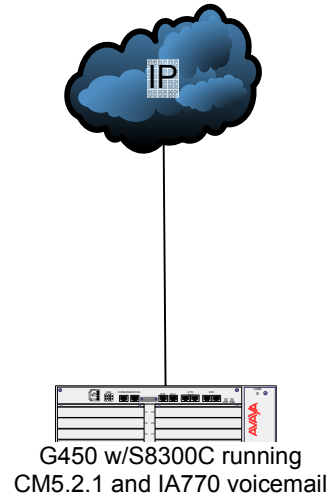
AIM 5.2: Serves ten (10) CM5.2.1 Systems (EOU, HMSC, OHSU, OIT, OSU, Pittock, PSU, SOU, UO, WOU). Fault Manager, Performance Manager, Multisite Administration, Network Management Console, Software Update Manager

SAL Gateway: Serves AES servers at OHSU

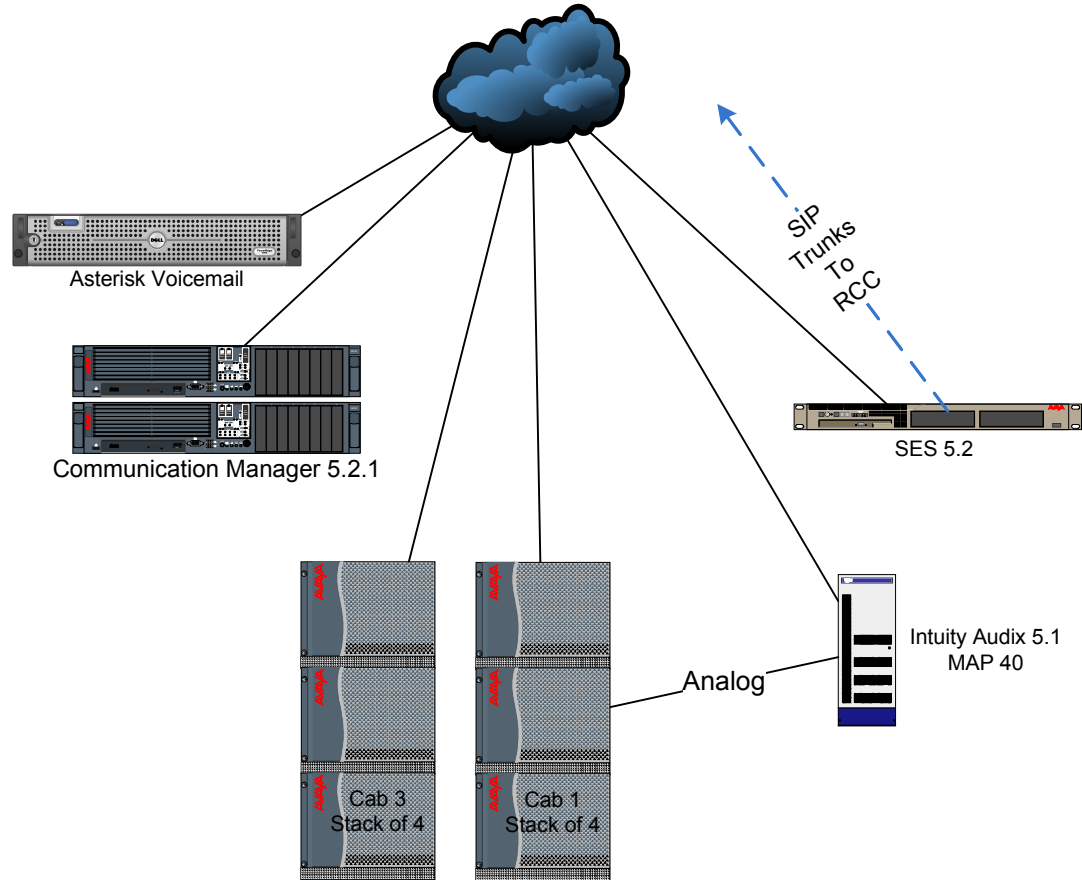
R14 CMS: 5 ACDs (OHSU – 1000 agts, OSU – 100 agts, PSU – 300 agts, SOU – 50 agts, UO – 200 agts)



Current Pittock Configuration

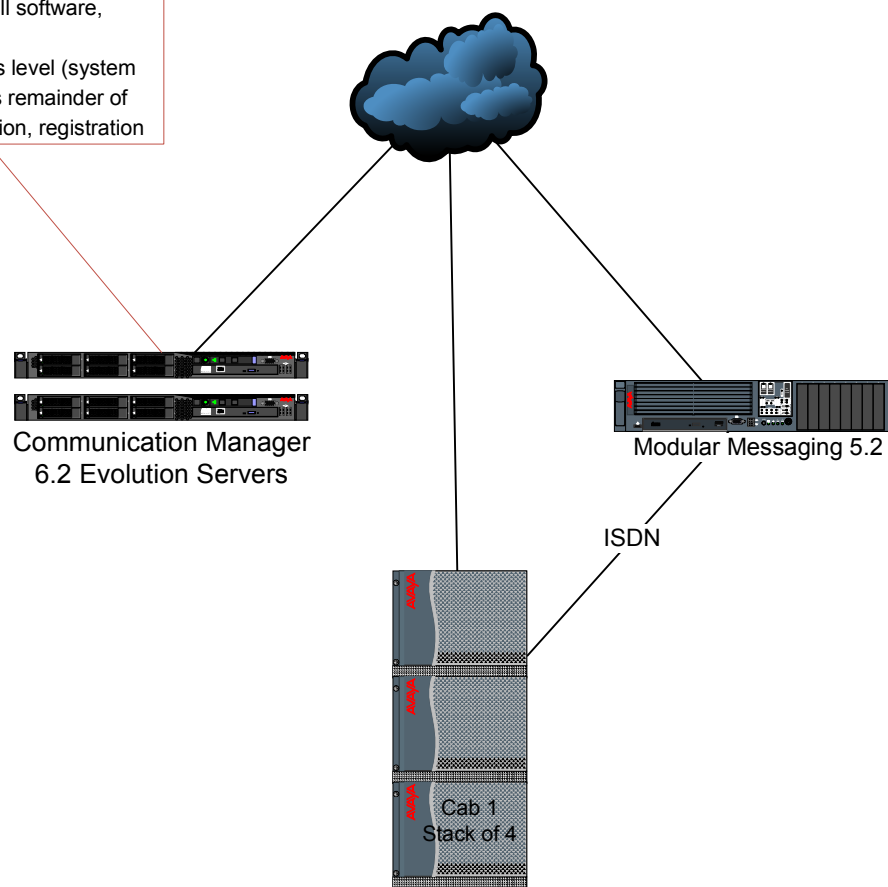


Current SOU Configuration



OIT Post-Upgrade Configuration

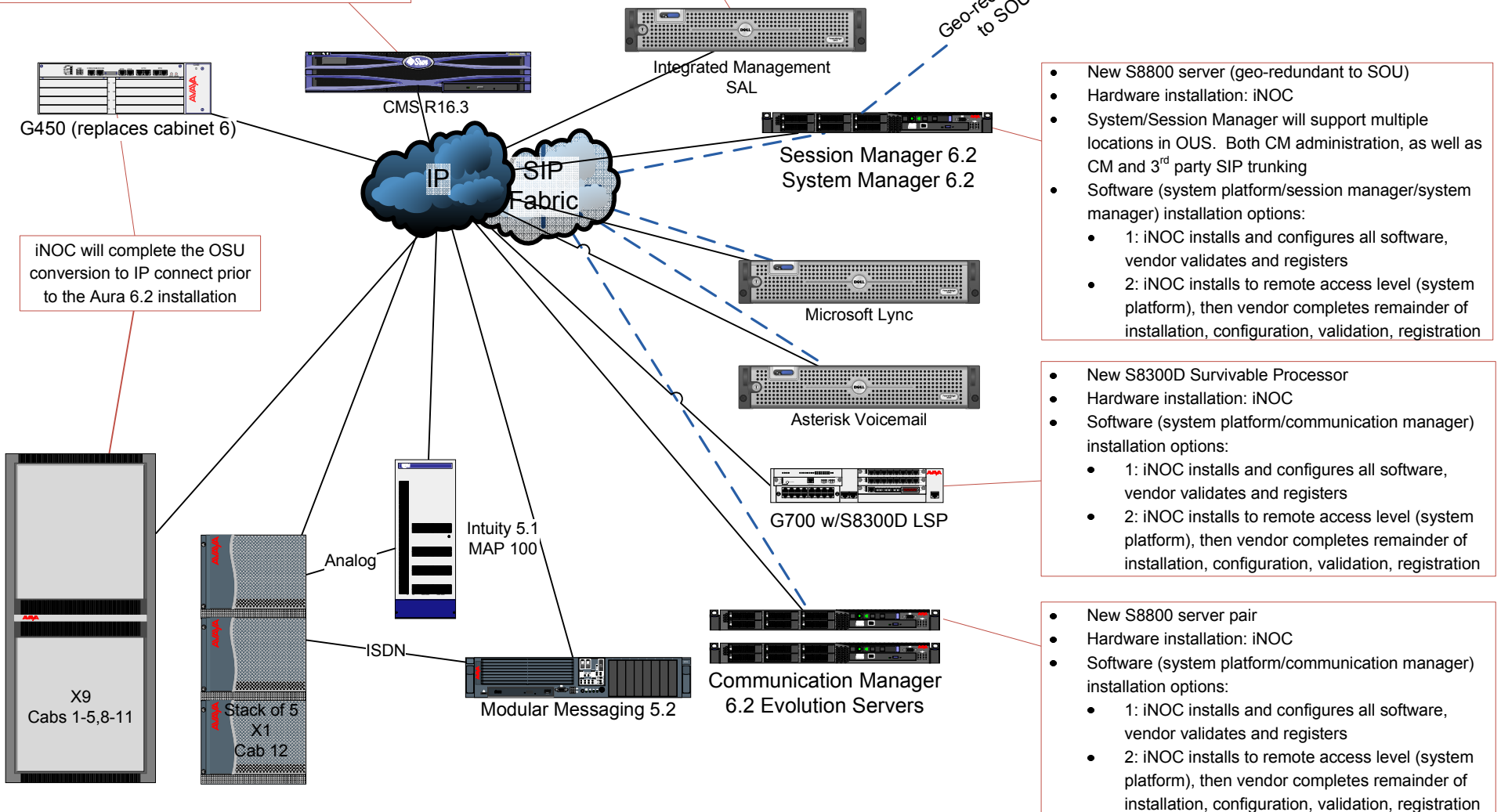
- New S8800 server pair
- Hardware installation: iNOC
- Software (system platform/communication manager) installation options:
 - 1: iNOC installs and configures all software, vendor validates and registers
 - 2: iNOC installs to remote access level (system platform), then vendor completes remainder of installation, configuration, validation, registration



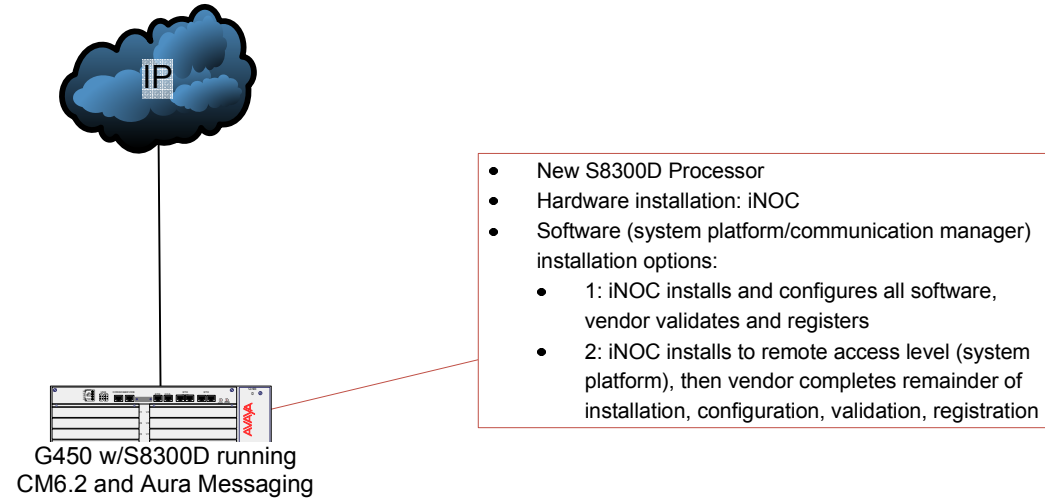
OSU Post-Upgrade Configuration

- New server replaces existing Sun Blade.
- Existing Sun Blade server transferred (less associated ACD licenses) to OHSU
- Configuration options:
 - 1: 3 ACDs (OSU-100agts, SOU-50agts, UO-200agts)
 - 2: 4 ACDs (OSU-100agts, PSU-300agts, SOU-50agts, UO-200agts)
- Installation and configuration performed by vendor (remote after iNOC base system install)
 - Optional ACD data and customized report migration according to options listed above

- Existing Server
- Upgrade to latest version of SAL (iNOC)
- Upgrade to latest version of Integrated Management (Fault, Performance, MSA, NMC, SUM, etc)
- Configure to support all systems (iNOC)
- Vendor validation and registration



Pittock Post-Upgrade Configuration



SOU Post-Upgrade Configuration

