

## GENERAL NOTES

1. ALL WORK SHALL COMPLY WITH LOCAL CODES, OREGON STATE CODES, AMENDMENTS, RULES, REGULATIONS, ORDINANCES, LAWS, ORDERS, APPROVALS, ETC. THAT ARE REQUIRED BY GOVERNING AUTHORITIES. IN THE EVENT OF CONFLICT, THE MOST STRINGENT REQUIREMENTS SHALL APPLY. REQUIREMENTS INCLUDE BUT ARE NOT LIMITED TO THE CURRENTLY APPLICABLE EDITIONS OR PUBLICATIONS OF THE FOLLOWING:

1. STATE OF OREGON 2010 ED. STRUCTURAL SPECIALTY CODE
2. OREGON ADMINISTRATIVE CODE
3. NATIONAL FIRE PROTECTION ASSOCIATION
4. STATE OF OREGON 2011 ED. ELECTRICAL SPECIALTY CODE
5. STATE OF OREGON 2011 ED. PLUMBING SPECIALTY CODE
6. STATE OF OREGON 2010 ED. MECHANICAL SPECIALTY CODE
7. OREGON FIRE CODE 2010 ED.

2. CONTRACTOR SHALL EXAMINE AND VERIFY CONDITIONS OF THE JOB SITE. ANY DISCREPANCY BETWEEN DRAWINGS AND EXISTING CONDITIONS SHOULD BE RECORDED IN WRITING AND REPORTED TO THE ARCHITECT FOR RESOLUTION PRIOR TO COMMENCEMENT OF WORK.

3. DIMENSIONS RELATED TO EXISTING CONDITIONS ARE APPROXIMATE. VERIFY ALL DIMENSIONS PRIOR TO BIDDING AND INSTALLATION OF ANY ROOFING OR FLASHING.

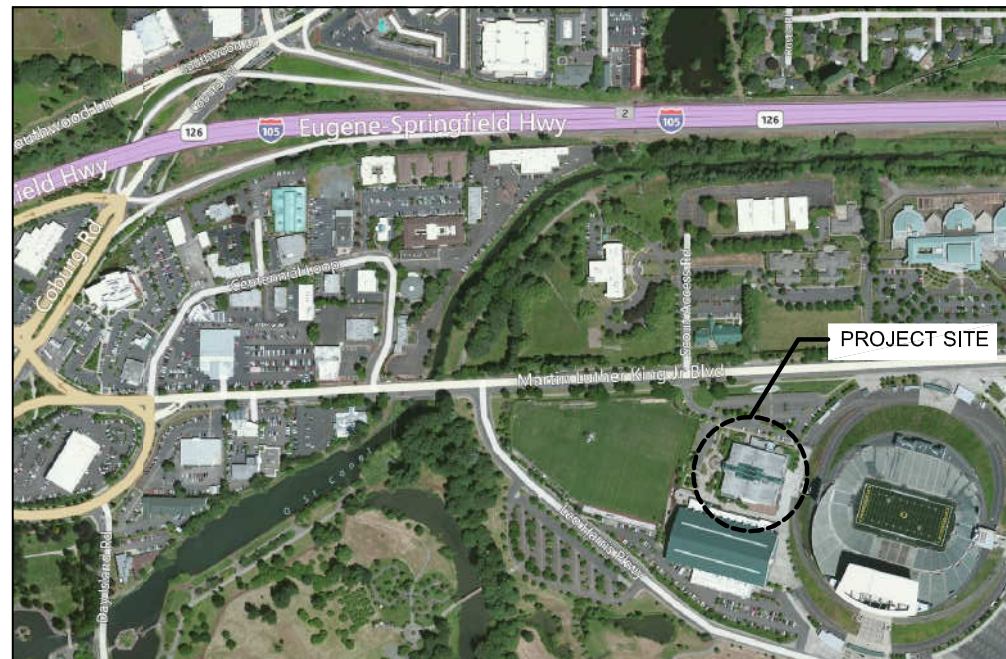
4. ROOF PENETRATION SIZES NOTED IN THE DRAWINGS ARE APPROXIMATE AND MUST BE VERIFIED PRIOR TO RE-ROOFING.

5. FALL PROTECTION TO BE BY CONTRACTOR.

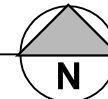
6. ALL BUILDING MATERIALS ARE TO BE STORED APPROPRIATELY AND PROTECTED FROM DAMAGE.

7. DO NOT SCALE DRAWINGS.

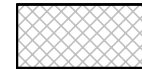
8. G.C. RESPONSIBLE FOR PROTECTION OF SURROUNDING SIDEWALKS AND VEGETATION FROM CONSTRUCTION TRAFFIC. PLYWOOD COVERING OF SIDEWALK REQUIRED. TREE ROOT ZONES TO BE PROTECTED WITH CYCLONE FENCING AND GROUND STAKES.



2  
A1 PROJECT LOCATION MAP  
Scale: NTS



## ROOF AREA NOTES

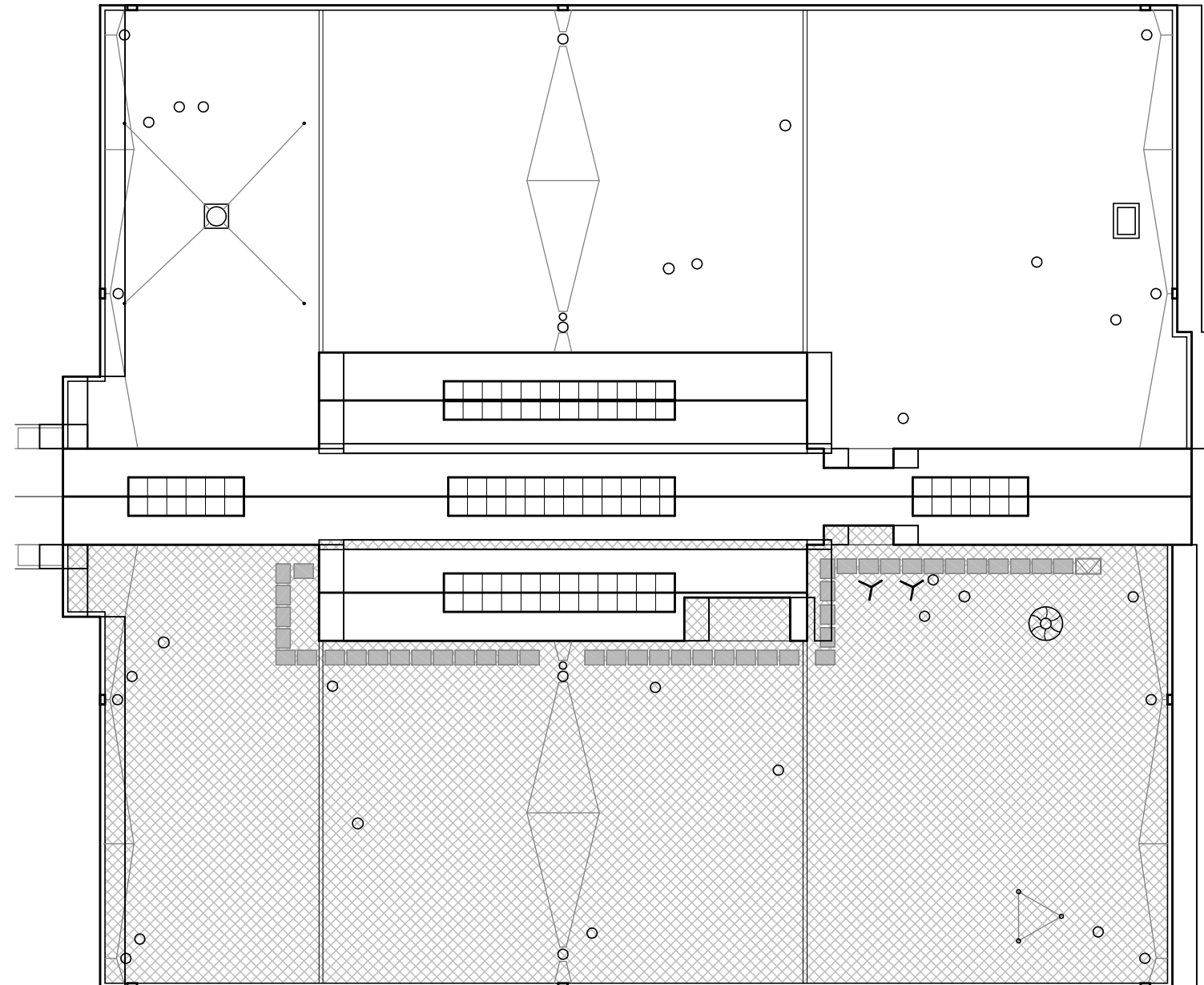


1. AREA 1 (BASE BID):  
REMOVE EXISTING BUILT-UP ROOFING & CANT STRIPS DOWN TO (E) SLOPED WOOD DECK. INSTALL NEW COVER BOARD, 60 MIL, MECHANICALLY ATTACHED MEMBRANE ROOFING, AND FLASHING PER DETAILS.

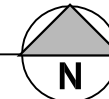
2. ALL OTHER AREAS NOT IN CONTRACT.

## ALTERNATE NOTES

1. ALTERNATE #1:  
INSTALL (2) LAYERS OF 1 1/2" RIGID INSULATION OVER WOOD DECK PRIOR TO INSTALLATION OF (N) COVERBOARD, ROOFING, & FLASHING. EXTEND CURBS & PLUMBING VENTS AS NECESSARY TO MAINTAIN MINIMUM FLASHING HEIGHTS.



1  
A1 ROOF AREA PLAN  
Scale: 1"=32'-0"



PROJECT #: 1222  
DRAWN BY: CA / TB  
CHECKED BY: JR  
FILE NAME: 1222-CURRENT  
DATE: 07/27/2012

PROJECT:

**UO CASANOVA CENTER  
ROOF REPLACEMENT**

**Rowell Brokaw  
Architects**

Rowell Brokaw Architects, P.C.  
One East Broadway, Suite 300  
Eugene, Oregon 97401  
Voice (541) 485-1003  
Fax (541) 485-7344  
www.rowellbrokaw.com

**A1**

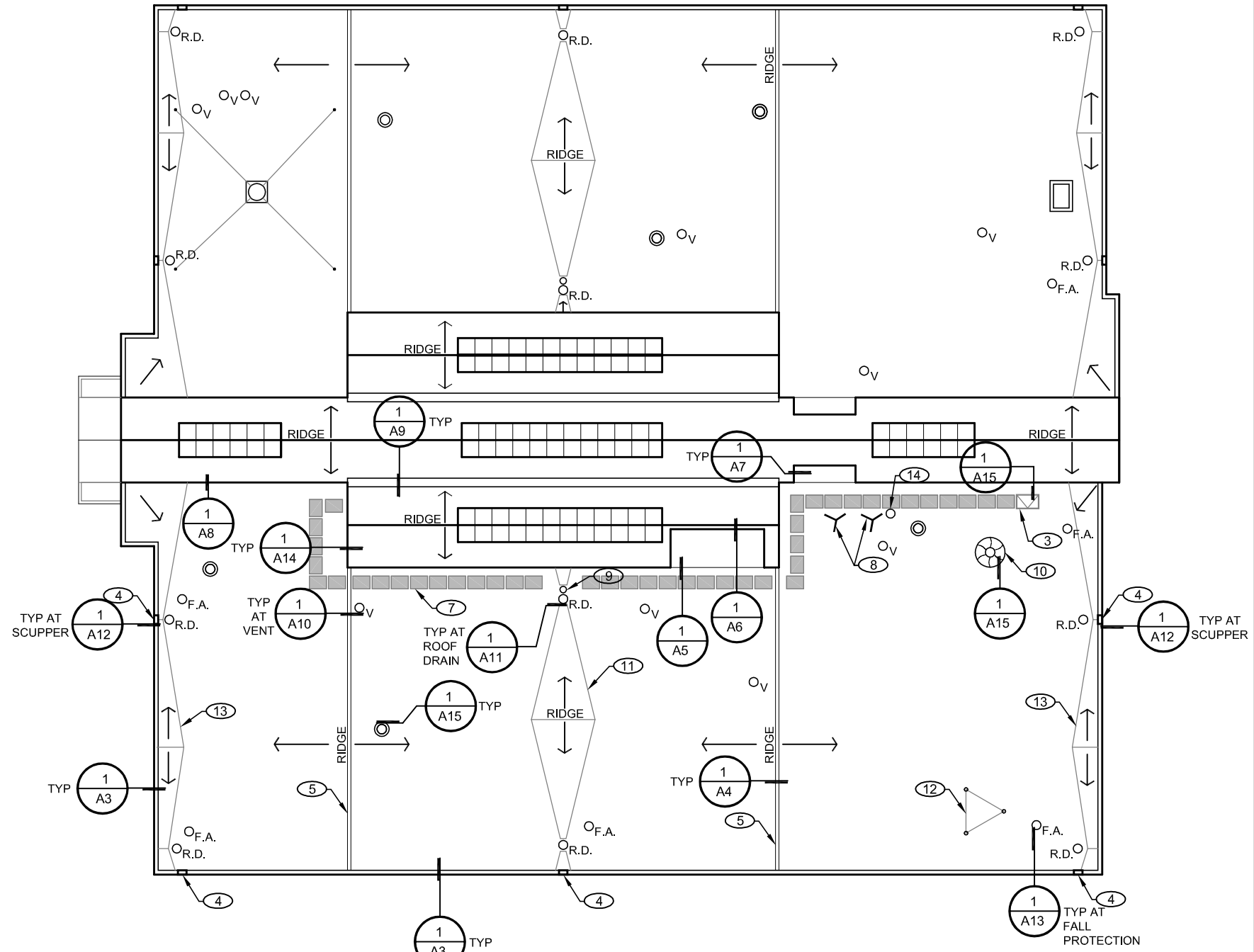
1 OF 15

# SYMBOLS LEGEND

- ⊙ MECHANICAL PENETRATION
- <sub>R.D.</sub> ROOF DRAIN
- <sub>V</sub> ROOF VENT
- <sub>F.A.</sub> FALL PROTECTION ANCHOR  
GUARDIAN CB OR APPROVED EQUAL

# KEYNOTES

- ① NOT USED
- ② NOT USED
- ③ (E) ROOF HATCH
- ④ (E) OVERFLOW TO SCUPPER
- ⑤ (E) ROOF AREA DIVIDER
- ⑥ (E) HVAC UNIT. REMOVE & STORE FOR REROOF & REINSTALL. COORDINATE SHUT DOWN OF UNIT WITH BUILDING OWNER.
- ⑦ (N) ADHERED WALK PADS
- ⑧ REMOVE (E) SATELLITE DISH. PATCH PENETRATIONS AS RQD FOR (N) ROOFING.
- ⑨ (E) OVERFLOW DRAIN
- ⑩ (E) MECHANICAL PENETRATION
- ⑪ (E) WOOD FRAMED CRICKET TO REMAIN
- ⑫ (E) TRIPOD, REMOVE & STORE FOR REROOF & REINSTALL.
- ⑬ (N) TAPERED CRICKETS @ PARAPET WALLS, TYP
- ⑭ (E) ROOF PENETRATION FOR SATELLITE CABLING TO BE REMOVED. PATCH PENETRATION FOR (N) ROOFING AS RQD.



1  
A2 ROOF PLAN  
Scale: 1" = 32'-0"



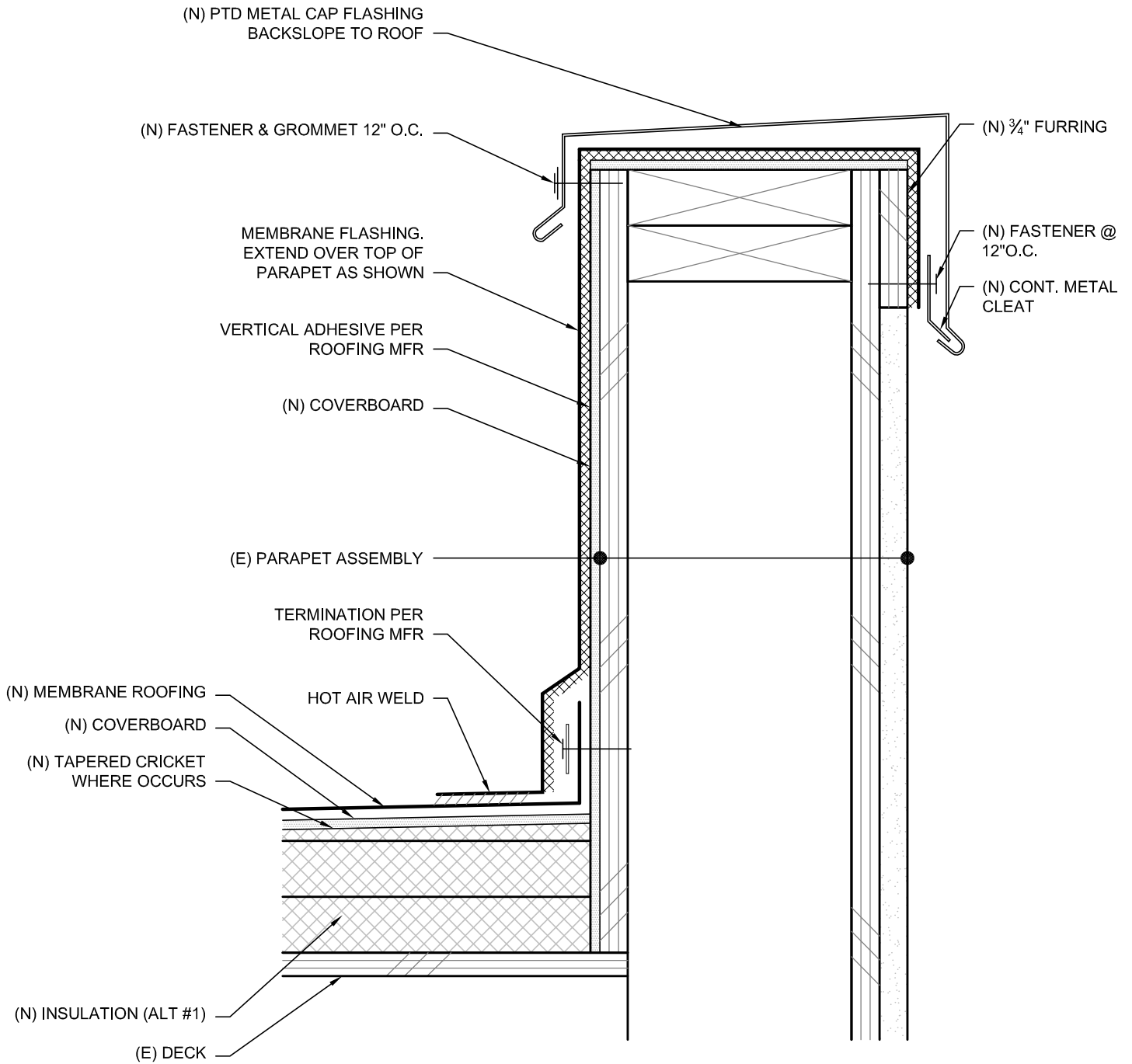
PROJECT #: 1222  
 DRAWN BY: CA / TB  
 CHECKED BY: JR  
 FILE NAME: 1222-CURRENT  
 DATE: 07/27/2012

PROJECT:  
**UO CASANOVA CENTER  
 ROOF REPLACEMENT**

**Rowell Brokaw  
 Architects**

**Rowell Brokaw Architects, P.C.**  
 One East Broadway, Suite 300  
 Eugene, Oregon 97401  
 Voice (541) 485-1003  
 Fax (541) 485-7344  
 www.rowellbrokaw.com

**A2**



1  
A3

PARAPET DETAIL

Scale: 3"=1'-0"

**Rowell Brokaw  
Architects**

**Rowell Brokaw Architects, P.C.**  
One East Broadway, Suite 300  
Eugene, Oregon 97401  
Voice (541) 485-1003  
Fax (541) 485-7344  
www.rowellbrokaw.com

SCALE: AS NOTED

PROJECT: UO CASANOVA CENTER ROOF REPLACEMENT

PROJECT #: 1222

DRAWN BY: CA/TB

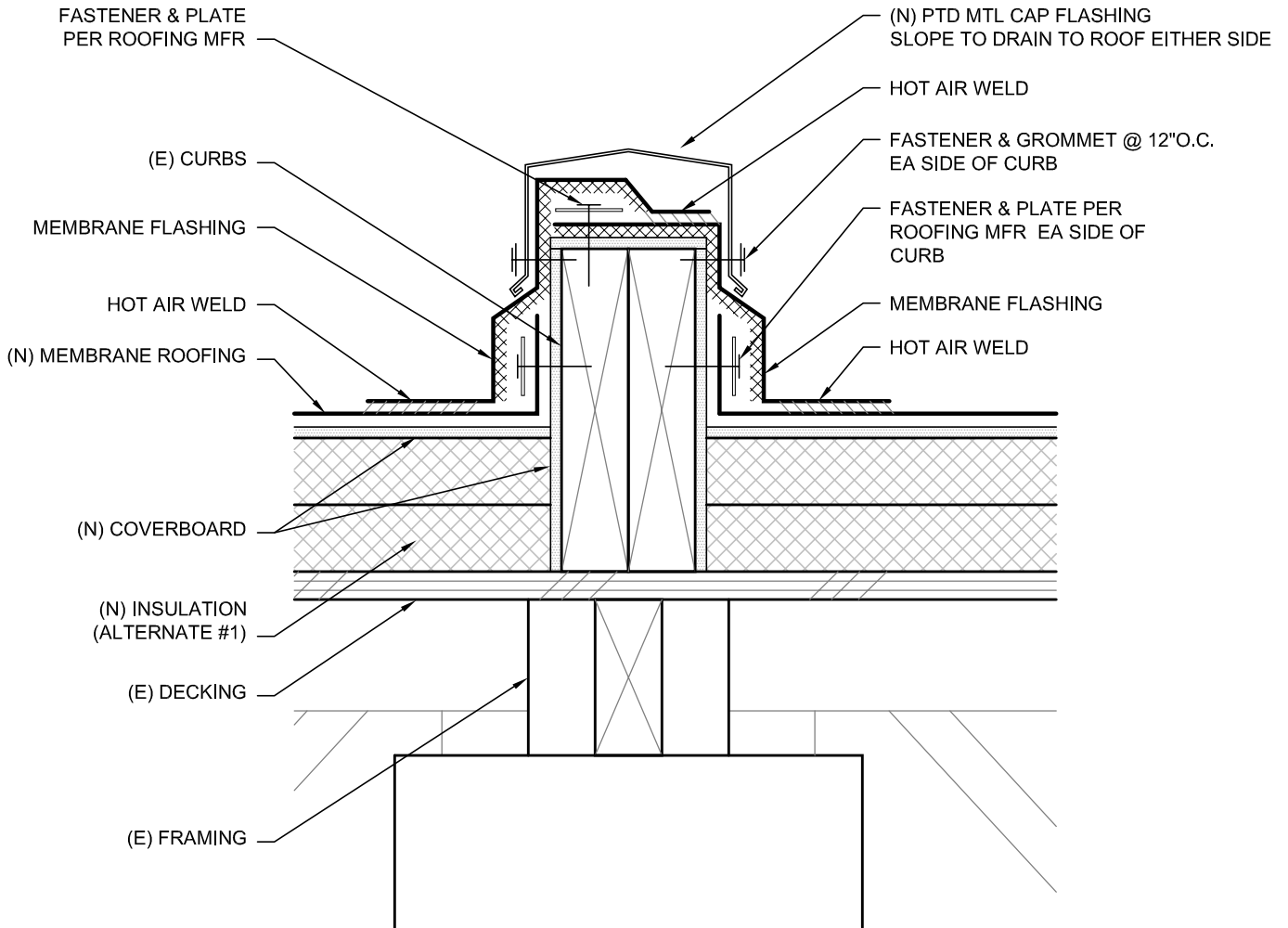
CHECKED BY: JR

FILE NAME: 1222-CURRENT

DATE: 07/27/2012



**A3**



1  
A4

ROOF AREA DIVIDER DETAIL

Scale: 3"=1'-0"

**Rowell Brokaw**  
Architects



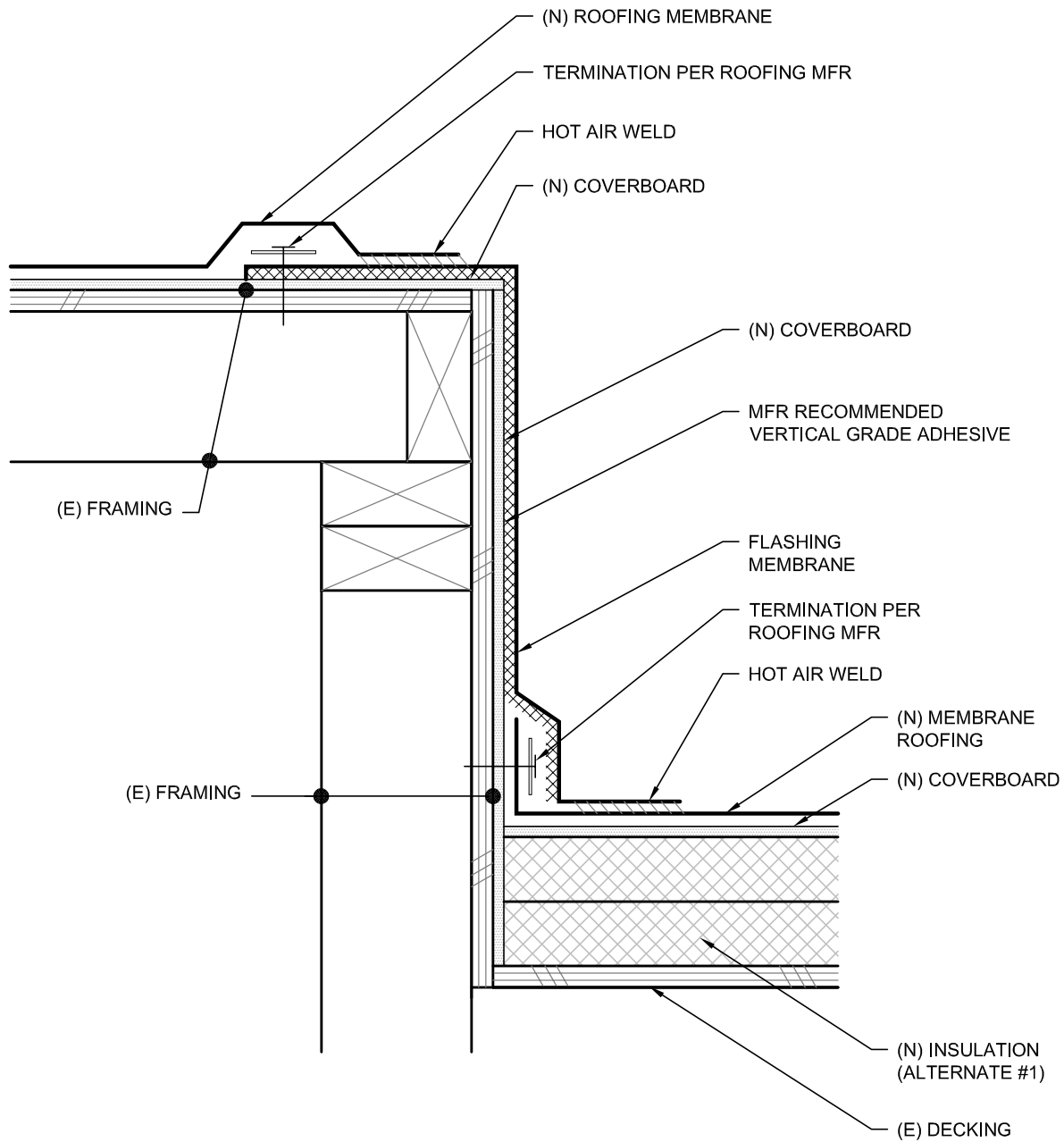
**Rowell Brokaw Architects, P.C.**  
One East Broadway, Suite 300  
Eugene, Oregon 97401  
Voice (541) 485-1003  
Fax (541) 485-7344  
www.rowellbrokaw.com

SCALE: AS NOTED

PROJECT: UO CASANOVA CENTER ROOF REPLACEMENT  
PROJECT #: 1222  
DRAWN BY: CA/TB  
CHECKED BY: JR  
FILE NAME: 1222-CURRENT  
DATE: 07/27/2012



**A4**



1  
A5

DETAIL @ RAISED PLATFORM

Scale: 3"=1'-0"

**Rowell Brokaw  
Architects**

Rowell Brokaw Architects, P.C.  
One East Broadway, Suite 300  
Eugene, Oregon 97401  
Voice (541) 485-1003  
Fax (541) 485-7344  
www.rowellbrokaw.com

SCALE: AS NOTED

PROJECT: UO CASANOVA CENTER ROOF REPLACEMENT

PROJECT #: 1222

DRAWN BY: CA/TB

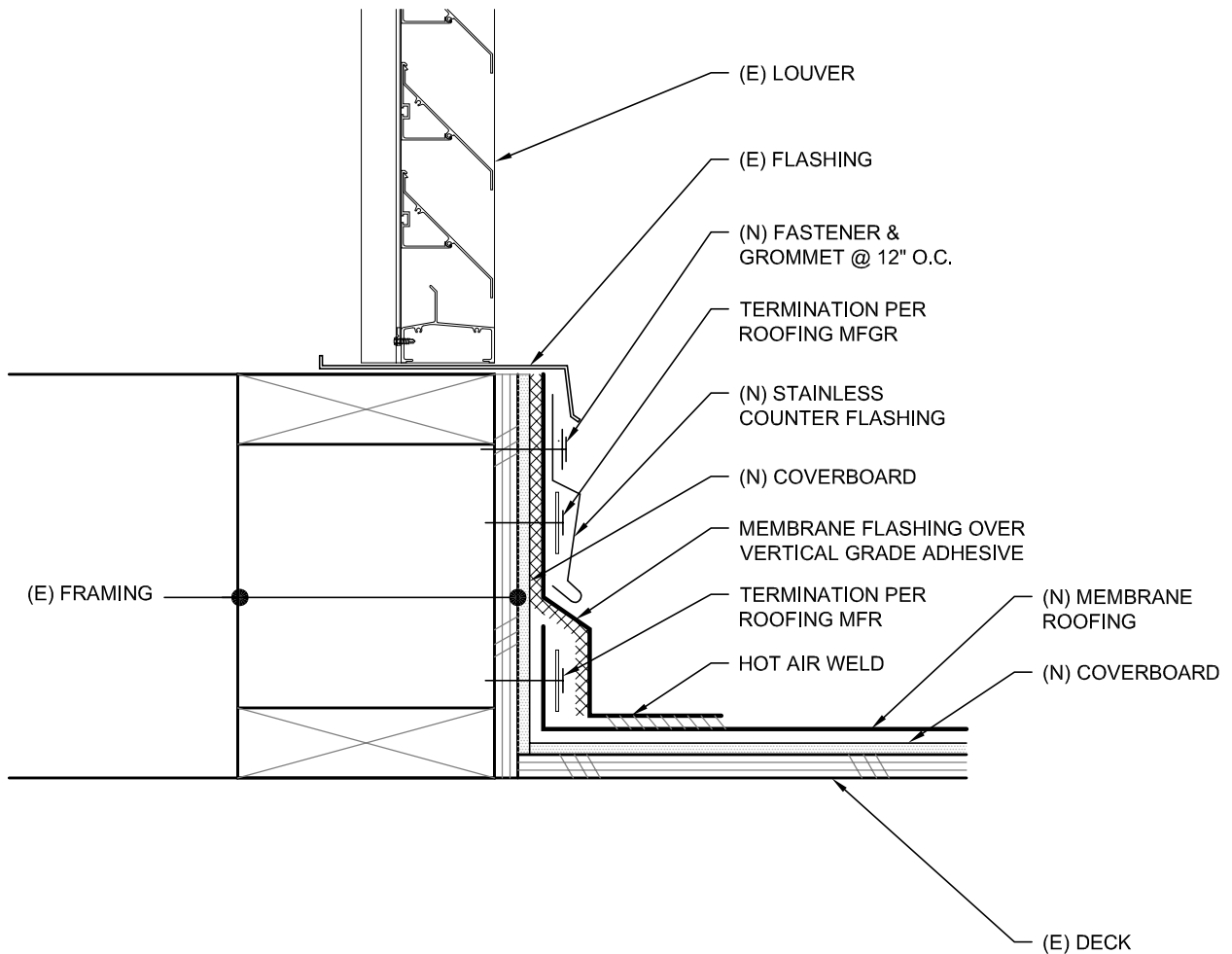
CHECKED BY: JR

FILE NAME: 1222-CURRENT

DATE: 07/27/2012



**A5**



1  
A6

**DETAIL @ LOUVER**

Scale: 3"=1'-0"

**Rowell Brokaw  
Architects**

**Rowell Brokaw Architects, P.C.**  
One East Broadway, Suite 300  
Eugene, Oregon 97401  
Voice (541) 485-1003  
Fax (541) 485-7344  
www.rowellbrokaw.com

SCALE: AS NOTED

PROJECT: UO CASANOVA CENTER ROOF REPLACEMENT

PROJECT #: 1222

DRAWN BY: CA/TB

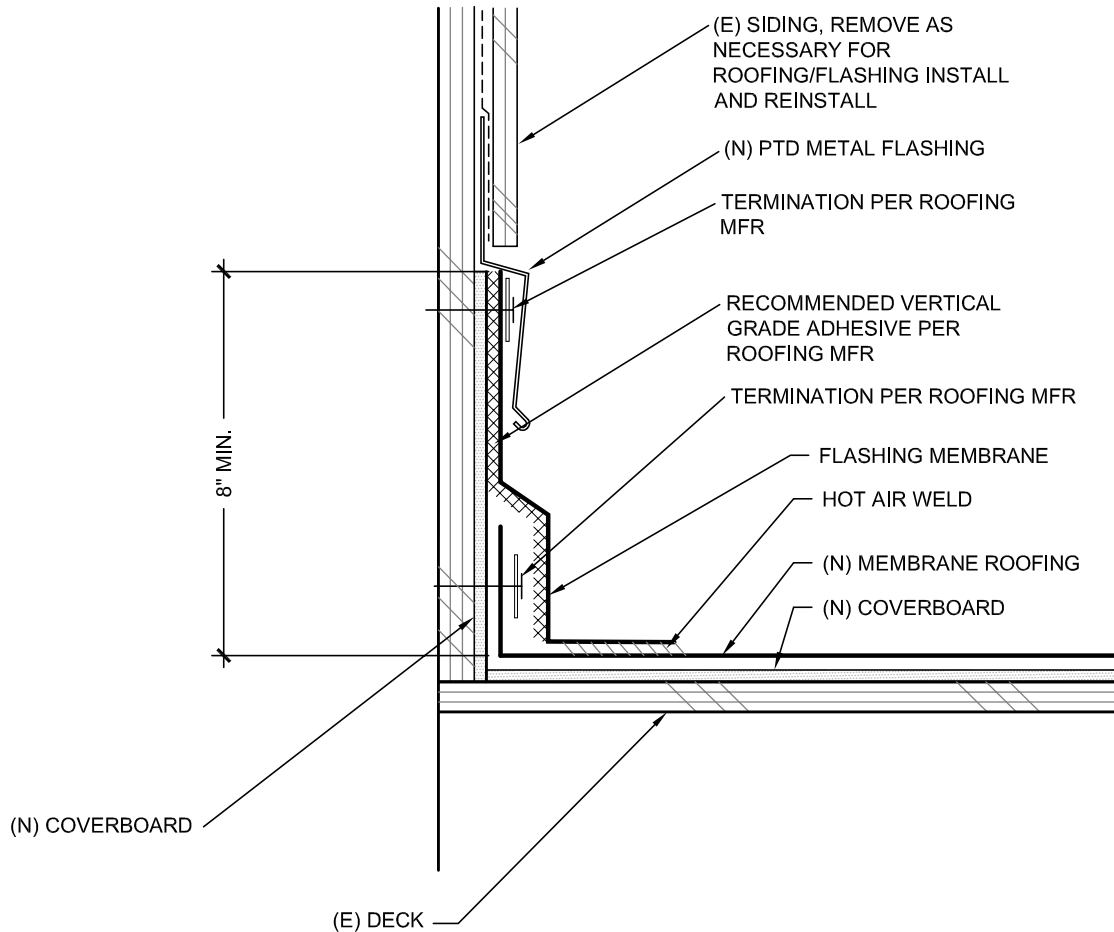
CHECKED BY: JR

FILE NAME: 1222-CURRENT

DATE: 07/27/2012



**A6**



1  
A7

DETAIL @ LOUVER SIDE WALL

Scale: 3"=1'-0"

**Rowell Brokaw**  
Architects

Rowell Brokaw Architects, P.C.  
One East Broadway, Suite 300  
Eugene, Oregon 97401  
Voice (541) 485-1003  
Fax (541) 485-7344  
www.rowellbrokaw.com

SCALE: AS NOTED

PROJECT: UO CASANOVA CENTER ROOF REPLACEMENT

PROJECT #: 1222

DRAWN BY: CA/TB

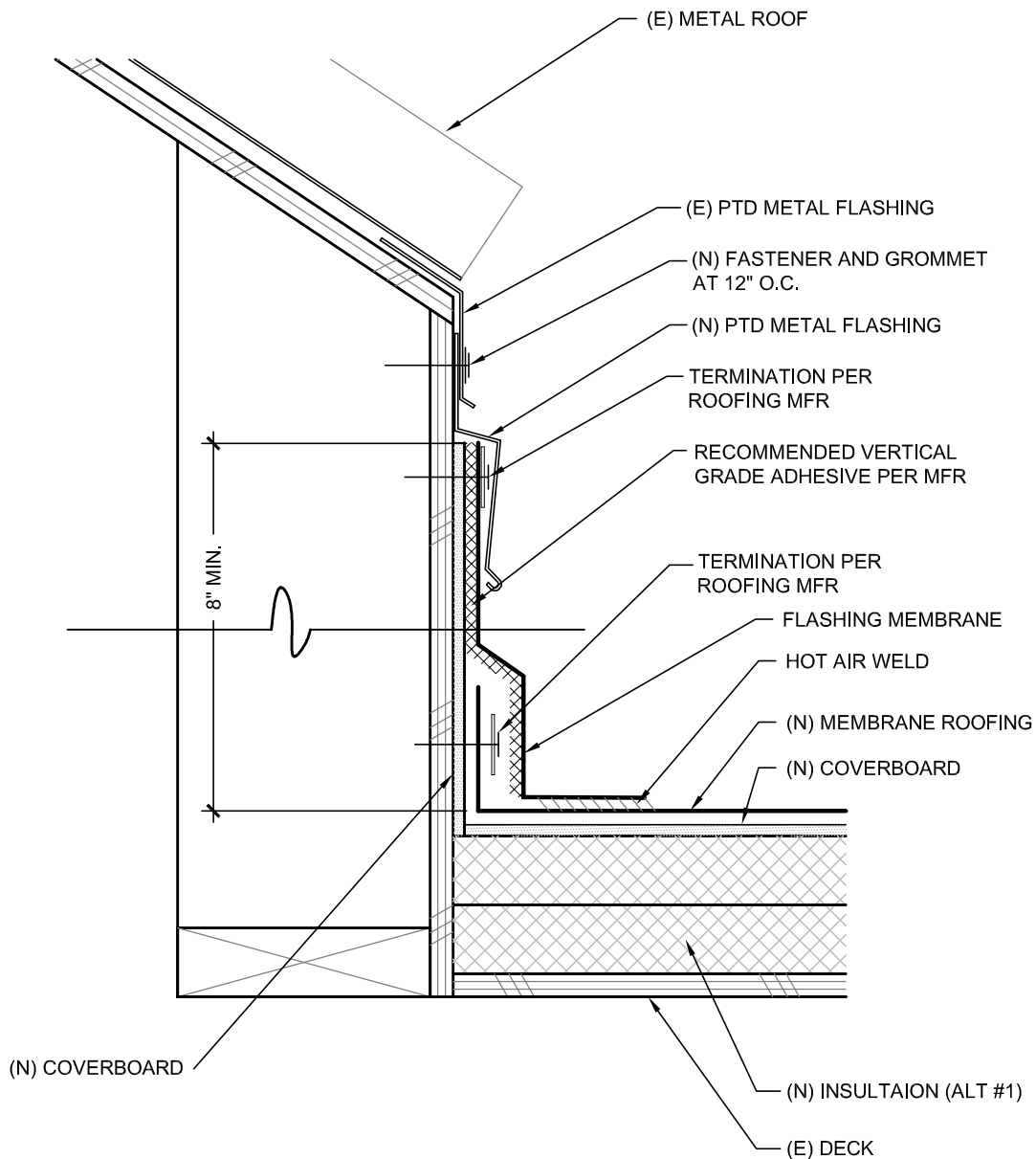
CHECKED BY: JR

FILE NAME: 1222-CURRENT

DATE: 07/27/2012



**A7**



1  
A8

DETAIL @ METAL ROOF EAVE

Scale: 3"=1'-0"

**Rowell Brokaw**  
Architects

Rowell Brokaw Architects, P.C.  
One East Broadway, Suite 300  
Eugene, Oregon 97401  
Voice (541) 485-1003  
Fax (541) 485-7344  
www.rowellbrokaw.com

SCALE: AS NOTED

PROJECT: UO CASANOVA CENTER ROOF REPLACEMENT

PROJECT #: 1222

DRAWN BY: CA/TB

CHECKED BY: JR

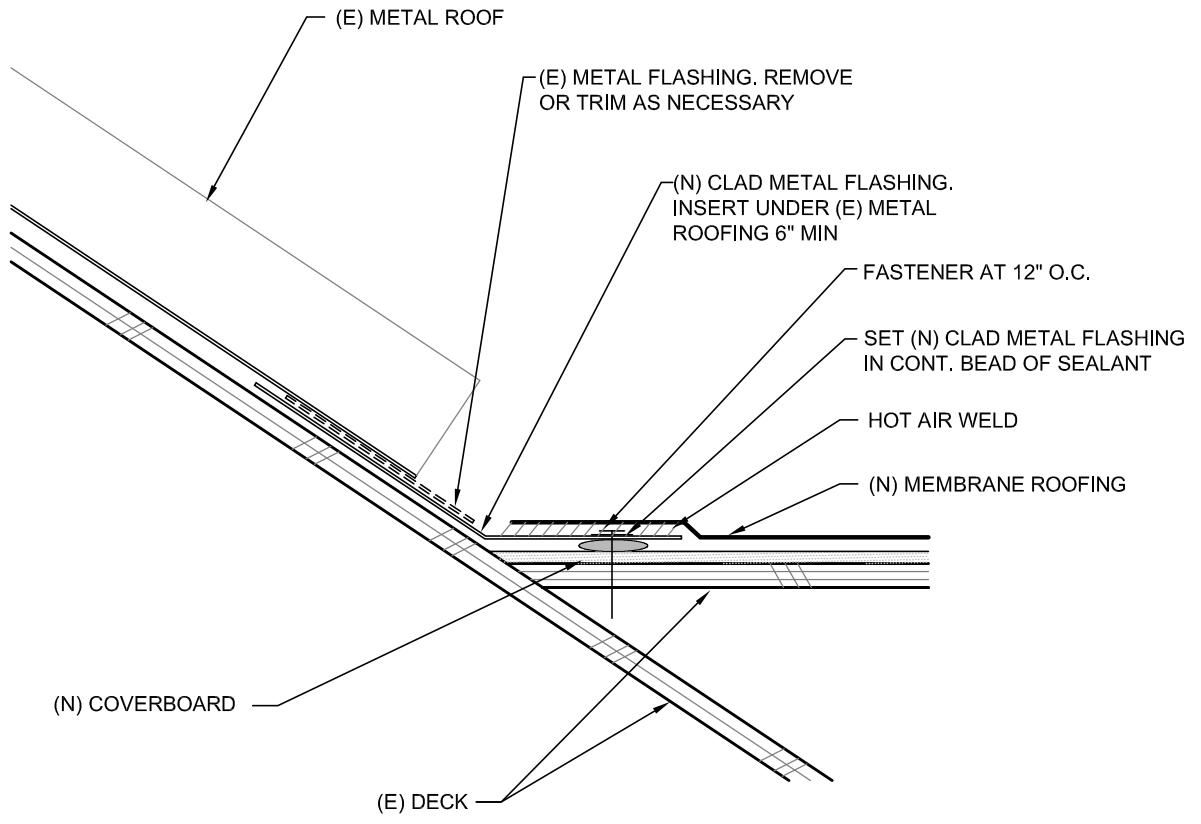
FILE NAME: 1222-CURRENT

DATE: 07/27/2012



**A8**





1  
A9

**DETAIL @ METAL ROOF VALLEY**

Scale: 3"=1'-0"

**Rowell Brokaw  
Architects**



**Rowell Brokaw Architects, P.C.**  
One East Broadway, Suite 300  
Eugene, Oregon 97401  
Voice (541) 485-1003  
Fax (541) 485-7344  
www.rowellbrokaw.com

SCALE: AS NOTED

PROJECT: UO CASANOVA CENTER ROOF REPLACEMENT

PROJECT #: 1222

DRAWN BY: CA/TB

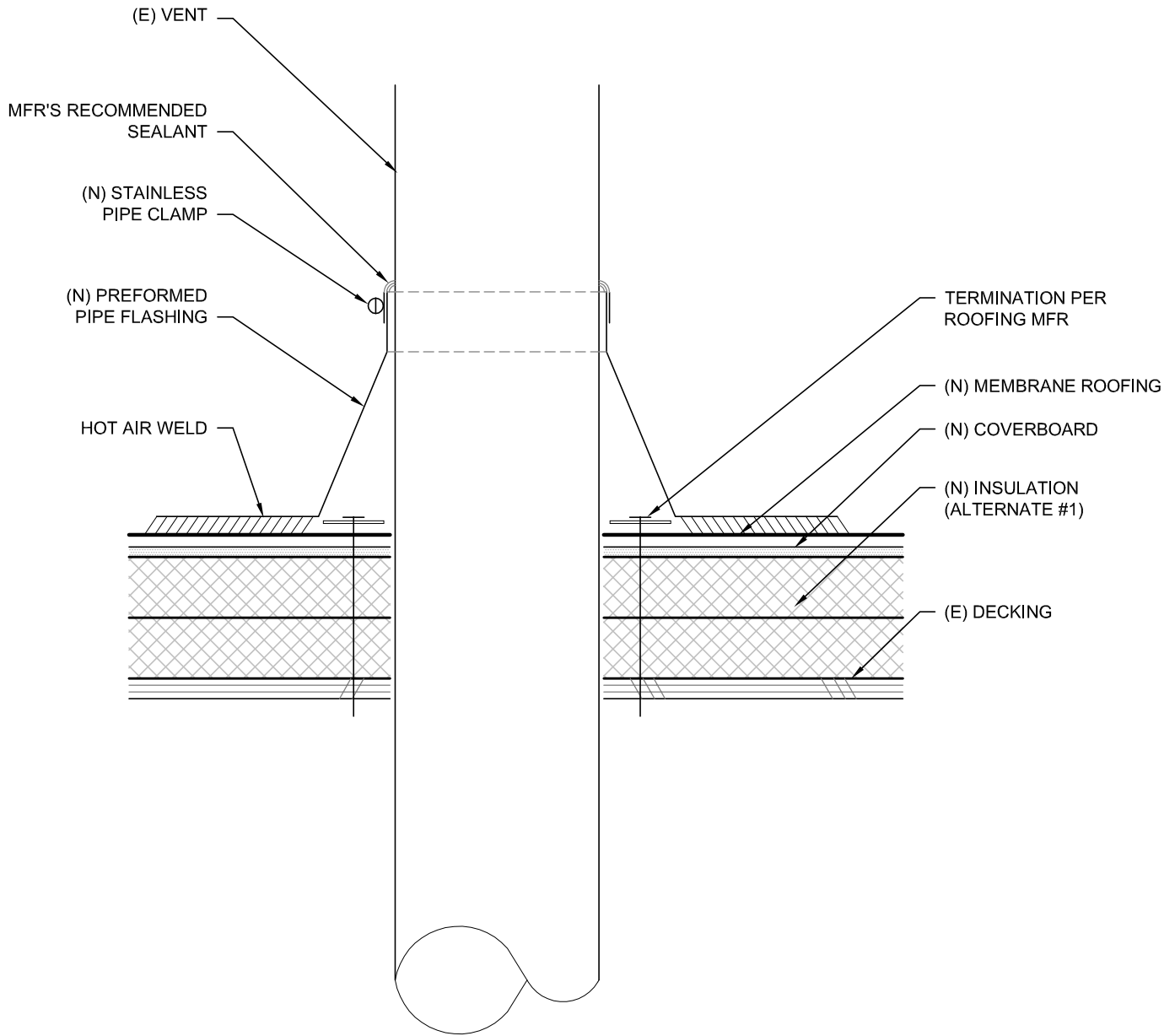
CHECKED BY: JR

FILE NAME: 1222-CURRENT

DATE: 07/27/2012



**A9**



1  
A10

**DETAIL @ ROOF VENT**

Scale: 3"=1'-0"

**Rowell Brokaw  
Architects**



**Rowell Brokaw Architects, P.C.**  
One East Broadway, Suite 300  
Eugene, Oregon 97401  
Voice (541) 485-1003  
Fax (541) 485-7344  
www.rowellbrokaw.com

SCALE: AS NOTED

PROJECT: UO CASANOVA CENTER ROOF REPLACEMENT

PROJECT #: 1222

DRAWN BY: CA/TB

CHECKED BY: JR

FILE NAME: 1222-CURRENT

DATE: 07/27/2012



**A10**

(E) DRAIN SCREEN. REMOVE,  
REPAIR, OR REPLACE AND  
REINSTALL AS NECESSARY

MEMBRANE TARGET PATCH

TERMINATION PER  
ROOFING MFR

HOT AIR WELD

ROOFING MFR'S  
RECOMMENDED  
WATER STOP/SEALANT

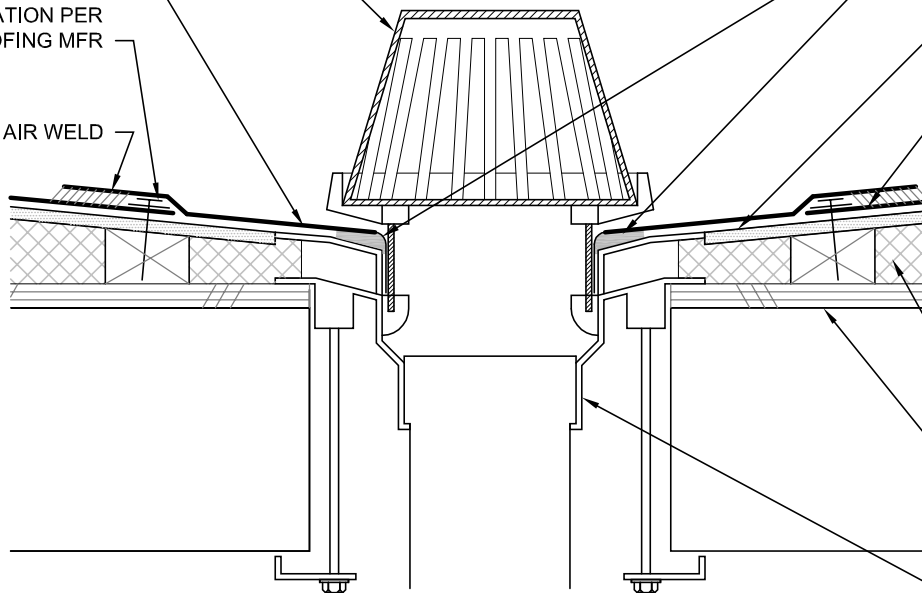
(N) COVERBOARD

(N) ROOFING  
MEMBRANE

(N) INSULATION  
SUMPED TO DRAIN  
(ALTERNATE #1)

(E) DECK

(E) ROOF DRAIN  
ASSEMBLY



1  
A11

### DETAIL @ ROOF DRAIN

Scale: 3"=1'-0"

**Rowell Brokaw  
Architects**

Rowell Brokaw Architects, P.C.  
One East Broadway, Suite 300  
Eugene, Oregon 97401  
Voice (541) 485-1003  
Fax (541) 485-7344  
www.rowellbrokaw.com

SCALE: AS NOTED

PROJECT: UO CASANOVA CENTER ROOF REPLACEMENT

PROJECT #: 1222

DRAWN BY: CA/TB

CHECKED BY: JR

FILE NAME: 1222-CURRENT

DATE: 07/27/2012



# A11

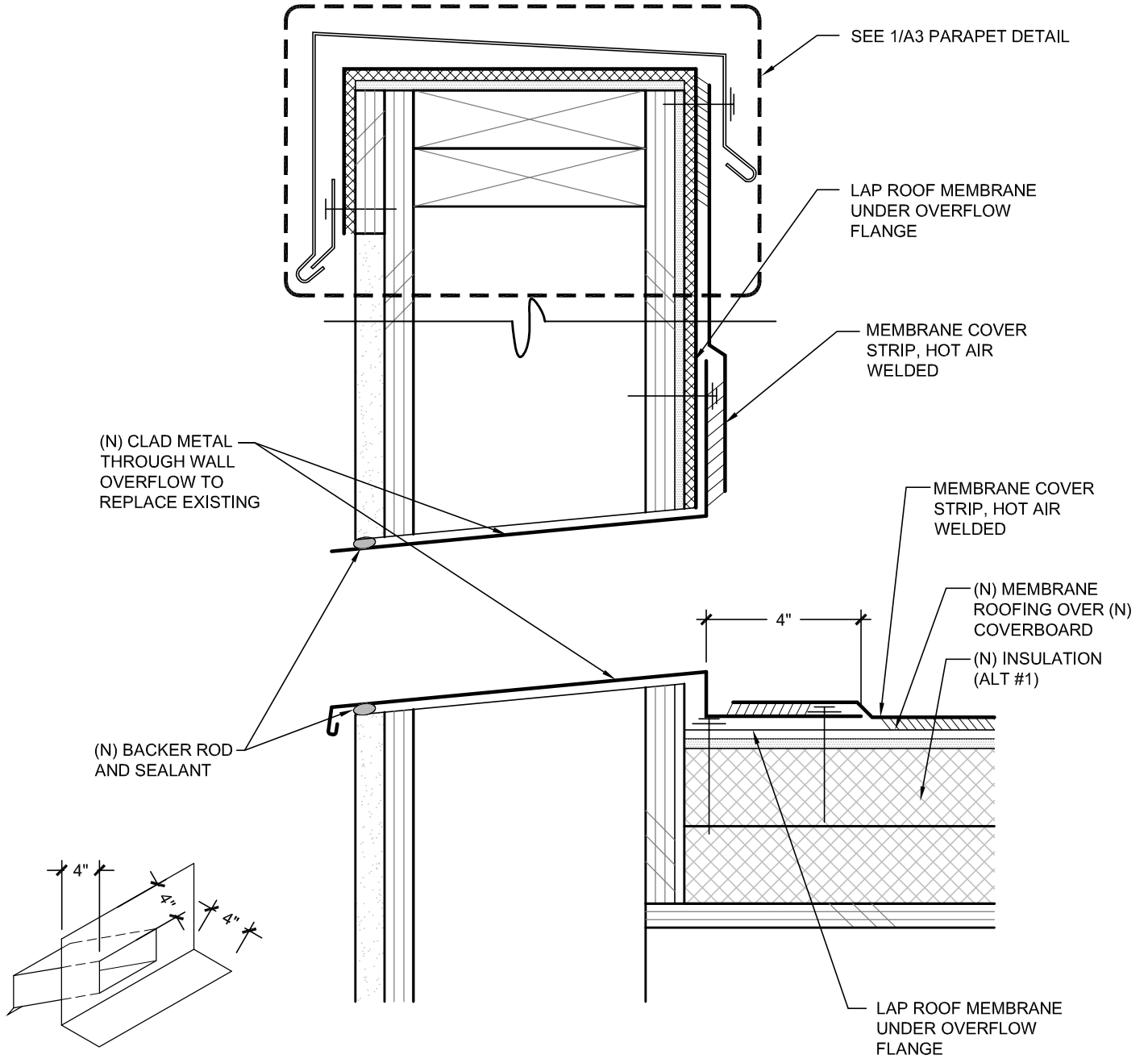


DIAGRAM OF THROUGH WALL FLASHING W/ MIN FLANGE DIMENSIONS

1  
A12

DETAIL @ OVERFLOW TO SCUPPER

Scale: 3"=1'-0"

**Rowell Brokaw  
Architects**

**Rowell Brokaw Architects, P.C.**  
One East Broadway, Suite 300  
Eugene, Oregon 97401  
Voice (541) 485-1003  
Fax (541) 485-7344  
www.rowellbrokaw.com

SCALE: AS NOTED

PROJECT: UO CASANOVA CENTER ROOF REPLACEMENT

PROJECT #: 1222

DRAWN BY: CA/TB

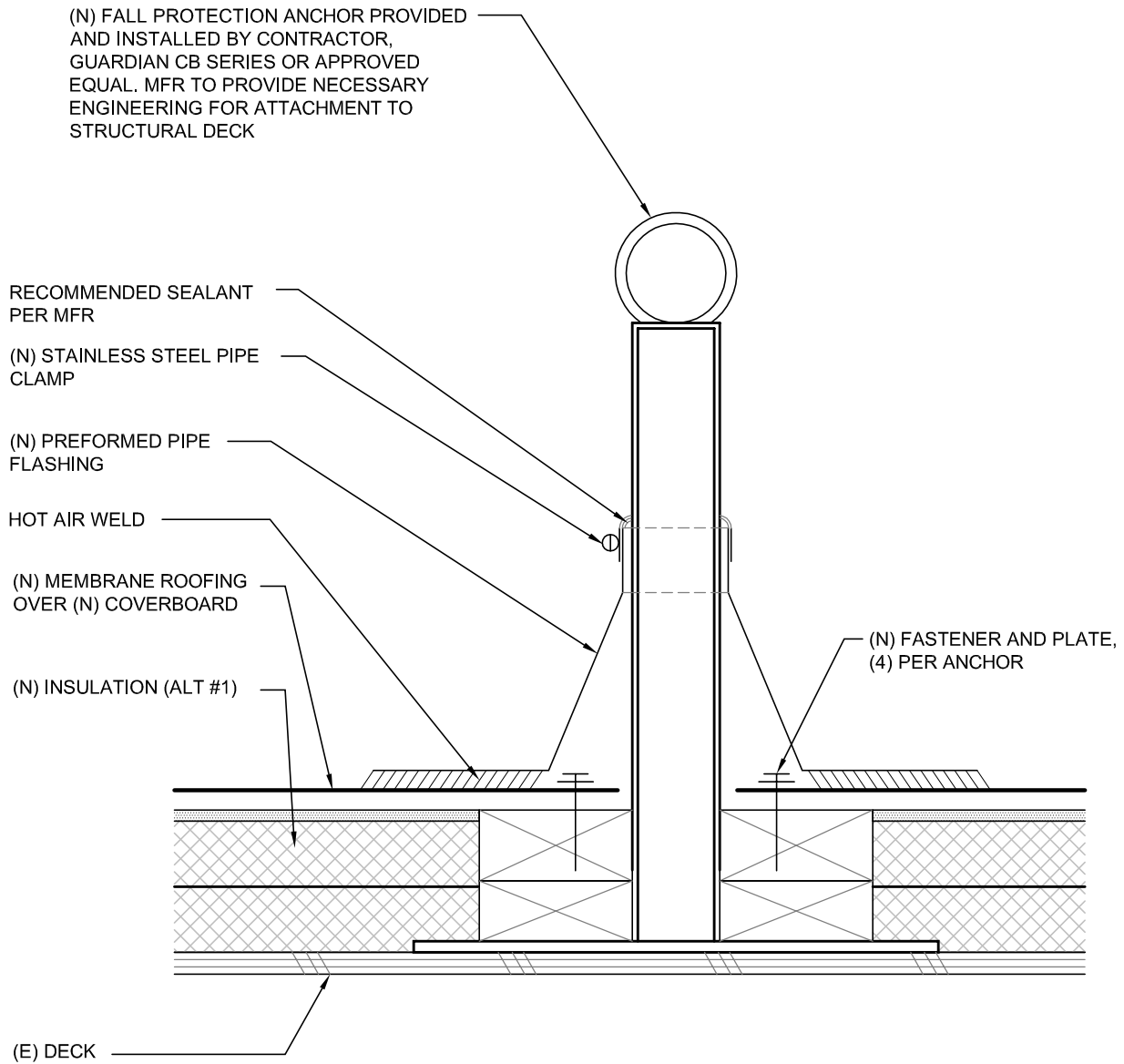
CHECKED BY: JR

FILE NAME: 1222-CURRENT

DATE: 07/27/2012



**A12**



1  
A13

DETAIL @ FALL PROTECTION ANCHOR

Scale: 3"=1'-0"

**Rowell Brokaw  
Architects**

**Rowell Brokaw Architects, P.C.**  
One East Broadway, Suite 300  
Eugene, Oregon 97401  
Voice (541) 485-1003  
Fax (541) 485-7344  
www.rowellbrokaw.com

SCALE: AS NOTED

PROJECT: UO CASANOVA CENTER ROOF REPLACEMENT

PROJECT #: 1222

DRAWN BY: CA/TB

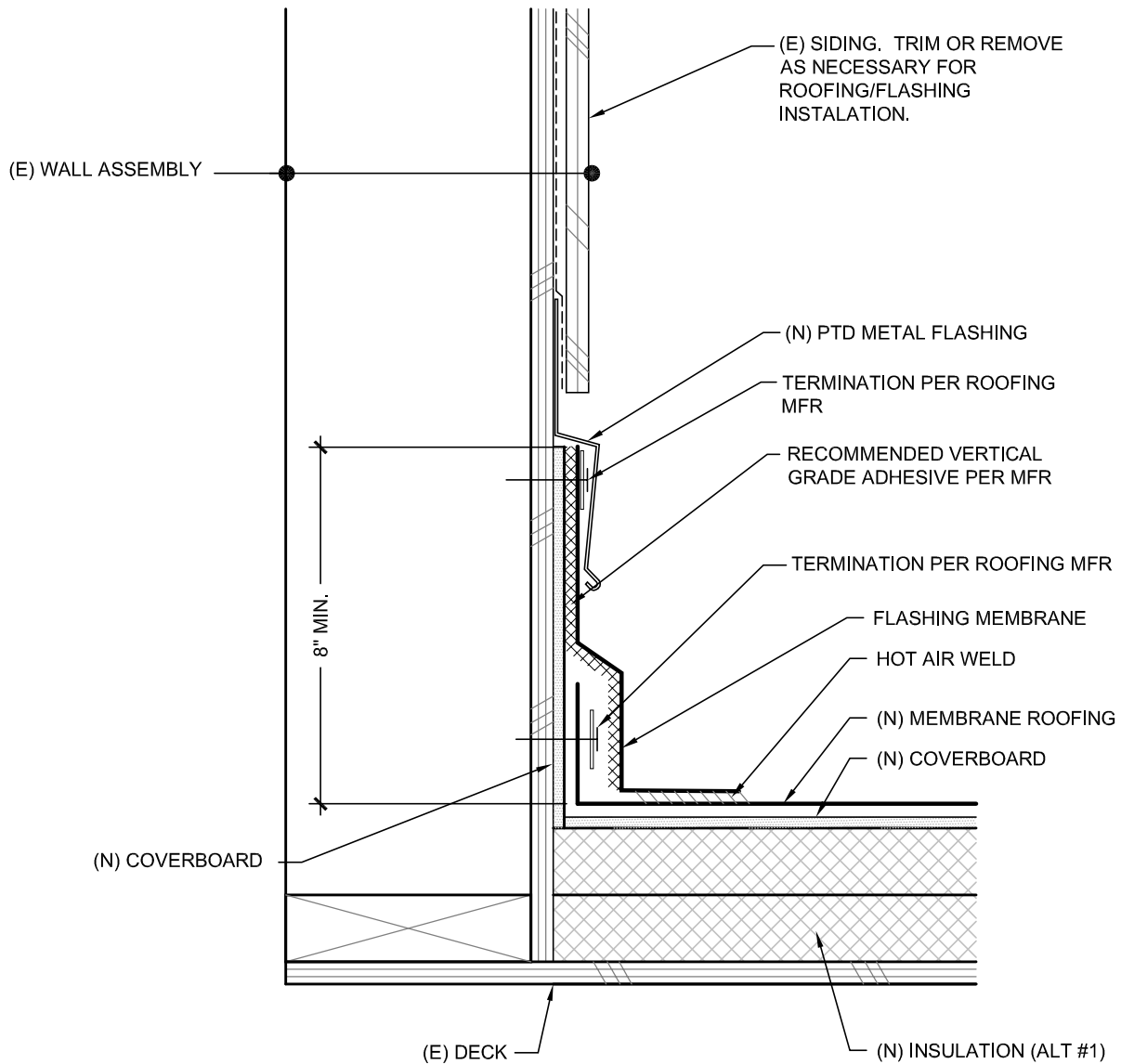
CHECKED BY: JR

FILE NAME: 1222-CURRENT

DATE: 07/27/2012



**A13**



1  
A14

**SIDEWALL TERMINATION DETAIL @ RAKE**

Scale: 3"=1'-0"

**Rowell Brokaw  
Architects**



**Rowell Brokaw Architects, P.C.**  
One East Broadway, Suite 300  
Eugene, Oregon 97401  
Voice (541) 485-1003  
Fax (541) 485-7344  
www.rowellbrokaw.com

SCALE: AS NOTED

PROJECT: UO CASANOVA CENTER ROOF REPLACEMENT

PROJECT #: 1222

DRAWN BY: CA/TB

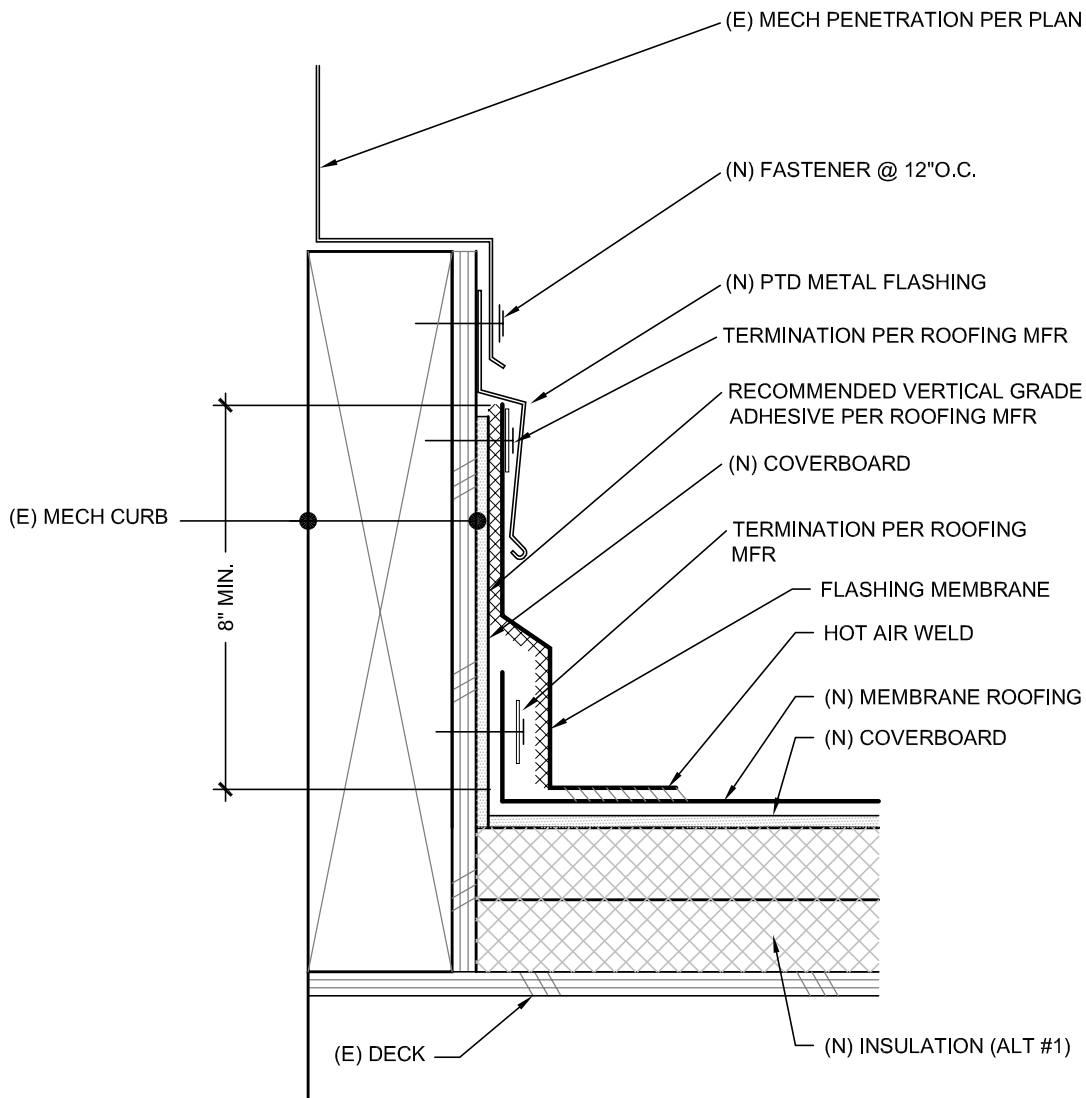
CHECKED BY: JR

FILE NAME: 1222-CURRENT

DATE: 07/27/2012



**A14**



1  
A15

TYPICAL MECHANICAL PENETRATION DETAIL

Scale: 3"=1'-0"

**Rowell Brokaw  
Architects**



**Rowell Brokaw Architects, P.C.**  
One East Broadway, Suite 300  
Eugene, Oregon 97401  
Voice (541) 485-1003  
Fax (541) 485-7344  
www.rowellbrokaw.com

SCALE: AS NOTED

PROJECT: UO CASANOVA CENTER ROOF REPLACEMENT

PROJECT #: 1222

DRAWN BY: CA/TB

CHECKED BY: JR

FILE NAME: 1222-CURRENT

DATE: 07/27/2012



**A15**