



June 2, 2017

Oregon State University  
Construction Contracts Administration  
Gill Coliseum Men's Basketball Locker Room Renovation

ADDENDUM NO. 4

THIS ADDENDUM IS BEING ISSUED for clarification and/or revisions of the drawings and specifications as noted. This document is hereby made a part of the Contract Documents to the extent as though it was originally included herein.

TECHNICAL SPECIFICATIONS:

- Item 1**      **Revised the follow specifications:**  
Section 08 80 00 - Glazing: Revise paragraph 2 (E) to read as follows:  
All-Glass Door: C.R. Laurence Co., Inc. ½-inch minimum thickness Clear Tempered Safety Glazing with beveled and polished edges. Catalogue #DR2SDU12P, Finish: Black/Bronze, top pivot 1NT401 and bottom pivot 1NT403.
- Item 2**      **REPLACE the following specifications in their entirety:**  
1. Section 22 10 06 – Plumbing Piping Specialties. Revised 04/14/2017  
2. Section 22 40 00 – Plumbing Fixtures. Revised 04/14/2017
- Item 3**      **Revised the follow specifications:**  
Section 21 13 00 – Fire Suppression Sprinklers: Revise article 2.2, paragraph A by adding item #7 as follows: 7. High Heat Sprinkler Head: Provide high heat heads at Sauna room and ceiling void space above sauna located in Coach's Lockers 102.
- Item 4**      **Revised the follow specifications:**  
Section 13 24 16 – Saunas: Revised article 2.1 by adding C. as follows: Finlandia Sauna is approved as equal for custom sauna. Finlandia heater unit must meet 208/3 phase power requirements and sized for 495 cubic feet. Club Model Heater #K10G-U3 floor mounted heater with CG170 Griffin Digital Wall Control. Interior ceiling height must be maintained at 9'-0" and custom entry door must be 3'-0" wide X 8'-0" high.

DRAWINGS:

- Item 5**      **Update Architectural Detail A5.3, detail 4:**  
Revise vertical dimension to 2'-8" to top of counter in lieu of 2'-6".



Construction Contracts Administration, Procurement, Contracts, & Materials Management (PCMM)  
Oregon State University, 644 SW 13<sup>th</sup> Ave., Corvallis, Oregon 97333  
T 541-737-4672 | F 541-737-5546

- Item 6**      **Update Architectural Detail A1.2:**  
Add General Note to state “Contractor to provide floor tile layout plan showing proposed slopes and invert elevations of floor drains.”
- Item 7**      **Update Architectural Detail A4.1 (2 updates as follows):**  
Revise interior elevation 3/A4.1 by adding the vertical 18” grad bar at HC toilet stall per accessory schedule on sheet A1.4.
- Add note to interior elevation 5/A4.1 to state “Grab bars installed on partition. Include 18” vertical grab bar per accessory schedule on sheet A1.4.”
- Item 8**      **REPLACE drawing in its entirety:**  
Sheet P1.3: Add floor drain to Sauna in Coach’s Locker Room as shown on revised sheet P1.3. Add Hose Bib’s HB-1 to Players Restroom 103 and Coach’s Restroom 101.

SUBSTITUTION REQUESTS:

- Item 9**      Section 26 51 00 Interior Lighting – approved and rejected per memo. See substitution request and supporting documentation for further details.
- Item 10**     Section 06 40 00, paragraph 2.1 (A) and Section 06 41 00, paragraph 2.1 (B) – add Advanced Cabinetry as approved manufacturer. See substitution request and supporting documentation for further details.
- Item 11**     Section 06 41 00, paragraph J(3) – Custom Cabinets and Lockers: Fiberesin Stonewood Interior Panels is approved as an equal to Trespa interior panels. Panels are used as part of custom locker fabrication. See substitution request and supporting documentation for further details.

END OF ADDENDUM NO. 4



6915 SW Macadam Avenue, Suite 200, Portland, OR 97219  
Phone: 503-892-1188 FAX: 503-892-1190

## ADDENDUM # 4

# OSU GILL COLISEUM MEN'S BASKETBALL LOCKER ROOM REMODEL

May 25, 2017

For: OSU Gill Coliseum – Men's Basketball Locker Room

---

This Addendum is issued to the above referenced project to make the following changes, additions, deletions, and/or clarifications. Notify all subcontractors affected by this addendum. It is essential that prospective bidders note the contents of this addendum and the Owner be made aware the addendum has been received. Therefore, please acknowledge receipt of this addendum on "Bid Proposal" submitted to the General Contractor.

This Addendum consists of 1 page plus attachments noted herein.

---

### Changes to Specifications:

#### FIRE SUPPRESSION

##### Section 21 13 00 – Fire Suppression Sprinklers

21 13 00 Fire Suppression Sprinklers

- A. Add high heat sprinkler head at Sauna and ceiling void space above sauna.

#### PLUMBING

##### SECTION 22 10 06 – Plumbing Piping Specialties

22 10 06 *Plumbing Piping Specialties*

- A. ADD floor drain FD-2.
- B. ADD hose bibb HB-1.

22 40 00 *Plumbing Fixtures*

- A. Delete Water Closets – Re-use existing
- B. Delete Urinals – Re-use existing

### Changes to Drawings:

#### PLUMBING

##### *Sheet P1.0*

- A. ADD hose bibb HB-1 to Plumbing Connection Schedule.

##### *Sheet P1.3*

- B. ADD floor drain FD-1 and associated piping for sauna at Coach's Lockers 102.



6915 SW Macadam Avenue, Suite 200, Portland, OR 97219  
Phone: 503-892-1188 FAX: 503-892-1190

## ADDENDUM # 4

### OSU GILL COLISEUM MEN'S BASKETBALL LOCKER ROOM REMODEL

May 25, 2017

- C. **ADD** hose bibb HB-1 and associated piping Coach's Restroom 101 and Player's Restroom 103.

END OF ADDENDUM #4

4622 m addendum #4

PLUMBING PIPING SPECIALTIES

PART 1 GENERAL

1.1 SECTION INCLUDES

- A. Floor drains.
- B. Cleanouts.
- C. Hose bibbs.
- D. Water hammer arrestors.

1.2 RELATED REQUIREMENTS

- A. Section 22 10 05 - Plumbing Piping.
- B. Section 22 40 00 - Plumbing Fixtures.
- C. Section 22 30 00 - Plumbing Equipment.
- D. Division 26 - Equipment Wiring: Electrical characteristics and wiring connections.

1.3 REFERENCE STANDARDS

- A. 36 CFR 1191 - Americans with Disabilities Act (ADA) Accessibility Guidelines for Buildings and Facilities; Architectural Barriers Act (ABA) Accessibility Guidelines; current edition.
- B. ASME A112.6.3 - Floor and Trench Drains; 2001 (R2007).
- C. ASSE 1019 - Performance Requirements for Wall Hydrant with Backflow Protection and Freeze Resistance; 2011.
- D. PDI-WH 201 - Water Hammer Arresters; 2010.

1.4 SUBMITTALS

- A. See Section 01 30 00 - Administrative Requirements, for submittal procedures.
- B. Product Data: Provide component sizes, rough-in requirements, service sizes, and finishes.
- C. Shop Drawings: Indicate dimensions, weights, and placement of openings and holes.
- D. Certificates: Certify that grease interceptors meet or exceed specified requirements.
- E. Manufacturer's Instructions: Indicate Manufacturer's Installation Instructions: Indicate assembly and support requirements.

PLUMBING PIPING SPECIALTIES

- F. Project Record Documents: Record actual locations of equipment, cleanouts, backflow preventers, water hammer arrestors.
- G. Operation Data: Indicate frequency of treatment required for interceptors.
- H. Maintenance Data: Include installation instructions, spare parts lists, exploded assembly views.
- I. Maintenance Materials: Furnish the following for Owner's use in maintenance of project.
  - 1. Extra Loose Keys for Outside Hose Bibbs: Two.

1.5 QUALITY ASSURANCE

- A. Manufacturer Qualifications: Company specializing in manufacturing the Products specified in this section with not less than three years documented experience.

1.6 DELIVERY, STORAGE, AND HANDLING

- A. Accept specialties on site in original factory packaging. Inspect for damage.

PART 2 PRODUCTS

2.1 DRAINS

- A. Floor Drain (FD-1):
  - 1. ASME A112.18.2 / CSA B1252. The tile-in shower drain shall be made of brass and PVC construction. Drain shall be for through-the-floor tile-in installation. Drain shall be for 2" and 3" PVC connection. Drain shall feature a removable grid plate and reversible collar to accommodate a variety of tile thickness. Drain shall be Kohler Model K-9136-CP. Provide mud-set tile floor system type with double membrane in players showers, and restrooms; provide single membrane in restroom 101.
- B. Floor Drain (FD-2):
  - 1. Manufacturers:
    - a. Jay R. Smith Manufacturing Company; Model 2110/2130: [www.jayrsmith.com](http://www.jayrsmith.com).
    - b. MIFAB Inc.: [www.mifab.com](http://www.mifab.com).
    - c. Wade: [www.wadedrains.com](http://www.wadedrains.com).
    - d. Zurn Industries, Inc.: [www.zurn.com](http://www.zurn.com).
    - e. Sioux Chief Finish Line; Model 833-NR/833-NQ: [www.siouxchief.com](http://www.siouxchief.com).
    - f. Substitutions: See Section 01 60 00 - Product Requirements.
  - 2. ASME A112.6.3; lacquered cast iron two piece body with double drainage flange, weep holes, reversible clamping collar, and round, adjustable cast iron strainer with acid resistant coating.

2.2 CLEANOUTS

- A. Manufacturers:
  - 1. Jay R. Smith Manufacturing Company: [www.jayrsmith.com](http://www.jayrsmith.com).

PLUMBING PIPING SPECIALTIES

2. MIFAB Inc.: [www.mifab.com](http://www.mifab.com).
3. Wade: [www.wadedrains.com](http://www.wadedrains.com).
4. Zurn Industries, Inc.: [www.zurn.com](http://www.zurn.com).
5. Sioux Chief Finish Line: [www.siouxchief.com](http://www.siouxchief.com).
6. Substitutions: See Section 01 60 00 - Product Requirements.

B. Cleanouts at Interior Finished Floor Areas (CO-2):

1. Lacquered cast iron body with anchor flange, threaded top assembly, and round gasketed scored cover in service areas and round gasketed depressed cover to accept floor finish in finished floor areas.

C. Cleanouts at Interior Finished Wall Areas (CO-3):

1. Line type with lacquered cast iron body and round epoxy coated gasketed cover, and round stainless steel access cover secured with machine screw.

D. Cleanouts at Interior Unfinished Accessible Areas (CO-4): Calked or threaded type. Provide bolted stack cleanouts on vertical rainwater leaders.

2.3 HOSE BIBBS: HB-1

A. Manufacturers:

1. Jay R. Smith Manufacturing Company: [www.jayrsmith.com](http://www.jayrsmith.com).
2. MIFAB Inc.: [www.mifab.com](http://www.mifab.com).
3. Zurn Industries, Inc.: [www.zurn.com](http://www.zurn.com).
4. Woodford Manufacturing Co.: [www.woodfordmfg.com/Woodford](http://www.woodfordmfg.com/Woodford)
5. Substitutions: See Section 01 60 00 - Product Requirements.

B. Wall Hydrants:

1. Manufacturers:
  - a. Woodford Manufacturing Co.; Model B67C: [www.woodfordmfg.com/Woodford](http://www.woodfordmfg.com/Woodford)
  - b. Zurn Industries, Inc.; Model Z-1320-C: [www.zurn.com](http://www.zurn.com).
2. ASSE 1019; with chrome plated wall plate hose thread spout, handwheel, and integral vacuum breaker.

2.4 WATER HAMMER ARRESTORS

A. Manufacturers:

1. Jay R. Smith Manufacturing Company; Model Hydrotol: [www.jayrsmith.com](http://www.jayrsmith.com).
2. MIFAB Inc.: [www.mifab.com](http://www.mifab.com).
3. Zurn Industries, Inc.: [www.zurn.com](http://www.zurn.com).
4. Precision Plumbing Products, Inc.: [www.ppcinc.net](http://www.ppcinc.net).
5. Sioux Chief: [www.siouxchief.com](http://www.siouxchief.com).
6. Substitutions: See Section 01 60 00 - Product Requirements.

B. Water Hammer Arrestors:

PLUMBING PIPING SPECIALTIES

1. Stainless steel construction, bellows type sized in accordance with PDI-WH 201, precharged suitable for operation in temperature range -100 to 300 degrees F and maximum 250 psi working pressure.

PART 3 EXECUTION

3.1 INSTALLATION

- A. Install in accordance with manufacturer's instructions.
- B. Extend cleanouts to finished floor or wall surface. Lubricate threaded cleanout plugs with mixture of graphite and linseed oil. Ensure clearance at cleanout for rodding of drainage system.
- C. Install floor cleanouts at elevation to accommodate finished floor.
- D. Install water hammer arrestors complete with accessible isolation valve on hot and cold water supply piping to lavatories, sinks, , and water closets.

END OF SECTION 22 10 06



PLUMBING FIXTURES

PART 1 GENERAL

1.1 SECTION INCLUDES

- A. Water closets.
- B. Urinals.
- C. Lavatories.
- D. Sinks.
- E. Showers.

1.2 RELATED REQUIREMENTS

- A. Section 22 10 05 - Plumbing Piping.

1.3 REFERENCE STANDARDS

- A. ANSI A117.1 - Accessible and Usable Buildings and Facilities.
- B. ASME A112.6.1M - Supports for Off-the-Floor Plumbing Fixtures for Public Use; 1997 (Reaffirmed 2002).

1.4 SUBMITTALS

- A. See Section 01 33 23 - Shop Drawings, Product Data, and Samples, for submittal procedures.
- B. Product Data: Provide catalog illustrations of fixtures, sizes, rough-in dimensions, utility sizes, trim, and finishes.
- C. Samples: Submit two lavatory supply fittings.
- D. Manufacturer's Instructions: Indicate installation methods and procedures.
- E. Manufacturer's Certificate: Certify products meet or exceed specified requirements.
- F. Maintenance Data: Include fixture trim exploded view and replacement parts lists.
- G. Waterless Urinals: Submit recommended frequency of maintenance and parts replacement, methods of cleaning, sources of replacement supplies and parts.
- H. Warranty: Submit manufacturer warranty and ensure forms have been completed in Owner's name and registered with manufacturer.

PLUMBING FIXTURES

- I. Maintenance Materials: Furnish the following for Owner's use in maintenance of project.
  - 1. Extra Faucet Washers: One set of each type and size.
  - 2. Extra Lavatory Supply Fittings: One set of each type and size.
  - 3. Extra Shower Heads: One of each type and size.
  - 4. Extra Toilet Seats: One of each type and size.
  - 5. Flush Valve Service Kits: One for each type and size.

1.5 CLOSEOUT SUBMITTALS

- A. Section 01 77 00 - Contract Closeout: Closeout procedures.
- B. Operation and Maintenance Data: Submit fixture, trim, exploded view and replacement parts lists.

1.6 QUALITY ASSURANCE

- A. Perform work in accordance with applicable codes.
- B. Manufacturer Qualifications: Company specializing in manufacturing the type of products specified in this section, with minimum three years of documented experience, and with service facilities within 100 miles of project. Commercial experience is required.
- C. Installer Qualifications: Company specializing in performing work of this section with minimum three years experience. Commercial experience is required.

1.7 REGULATORY REQUIREMENTS

- A. Products Requiring Electrical Connection: Listed and classified by Underwriters Laboratories Inc., as suitable for the purpose specified and indicated.

1.8 PRE-INSTALLATION MEETINGS

- A. Convene minimum one week prior to commencing work of this section.

1.9 DELIVERY, STORAGE, AND HANDLING

- A. Accept fixtures on site in factory packaging. Inspect for damage.
- B. Protect installed fixtures from damage by securing areas and by leaving factory packaging in place to protect fixtures and prevent use.

1.10 WARRANTY

- A. Section 01 77 00 - Contract Closeout: Product warranties.

PLUMBING FIXTURES

PART 2 PRODUCTS

2.1 FLUSH VALVE WATER CLOSETS: WC-1, WC-2 (ACCESSIBLE)

- A. Re-use existing fixtures.
- B. Water Closet Carriers:
  - 1. ASME A112.6.1M; adjustable cast iron frame, integral drain hub and vent, adjustable spud, lugs for floor and wall attachment, threaded fixture studs with nuts and washers.

2.2 LAVATORIES (LV-1) ACCESSIBLE

- A. Manufacturers:
  - 1. Kohler, Model K-2882 "Verticyl".
    - a. Vitreous China.
    - b. Under-mount.
    - c. Rectangular basin with contemporary design.
    - d. With overflow.
    - e. No faucet holes; requires wall or counter- mount faucet.
    - f. 17-1/4" (438 mm) x 13" (330 mm).
- B. Supply Faucet: ASME A112.18.1; Chicago Faucets model; single hole, dual supply for hot and cold water service. Self Sustaining Power System - water turbine generates the necessary power with flow rates 0.35 GPM (1.3 L/min) or greater to operate the faucet for 10+ years. Stainless Steel Braided Hoses(s) included. Concealed thermostatic mixing valve included. 0.35 GPM (1.3L/min) flow control insert in spout inlet. On demand IR detection for hands-free actuation and maximum water savings. 20 seconds standard maximum run time; drops to 10 seconds in high use environments for additional water savings.
- C. Accessories:
  - 1. Chrome plated 17 gage brass P-trap with clean-out plug and arm with escutcheon.
  - 2. Offset waste with perforated open strainer.
  - 3. Screwdriver stops. Brasscraft KT Series 1/4 turn ball stop.
  - 4. Supplies: Flexible braided stainless steel.
  - 5. Trap and waste insulated and offset to meet ADA compliance. Handy-Shield Trap Gear soft under-lav insulators.
  - 6. Brasscraft, Speedway, Eastman, or McGuire.

2.3 WALL HUNG URINALS (STANDARD) UR-1

- A. Re-use existing fixtures.

2.4 WALL HUNG URINALS (ACCESSIBLE) UR-2

- A. Re-use existing fixtures

PLUMBING FIXTURES

2.5 SINKS: S-1 (ACCESSIBLE)

- A. Undermount Kitchen Sink: Nantucket Sinks; Model PR3018-BL: Premium granite composite kitchen sink, 80% stone/20% resin, scratch resistant/heat resistant to 560 degrees F, hygienic non-porous surface, undermount installation clips included, designed and made in Italy, matte finish.
- B. Trim: ASME A112.18.1; chrome plated brass supply with 8 inch swing spout, vandal proof water economy aerator with maximum 2.2 gallons flow, single lever handle. Delta Model 100LF-HDF. Provide InSinkerator Model H770-SS instant hot water dispenser.
- C. Accessories:
  - 1. Chrome plated 17 gage brass P-trap with clean-out plug and arm with escutcheon.
  - 2. Offset waste with perforated open strainer.
  - 3. Screwdriver stops. Brasscraft KT Series 1/4 turn ball stop.
  - 4. Supplies: Flexible braided stainless steel.
  - 5. Trap and waste insulated and offset to meet ADA compliance. Handy-Shield Trap Gear soft under-low insulators.
  - 6. Brasscraft, Speedway, Eastman, or McGuire.

2.6 SHOWERS: SH-1

- A. Shower Enclosure: Enclosure is built in.
- B. Trim:
  - 1. Two-handle industrial exposed shower shall be of brass construction. Faucet shall feature brass valve bodies. Faucet shall also feature Velvet valves. Product shall be for 6" (152 mm) centers. Product shall include showerhead, four-arm handles, wall-mount brackets, and reversible yoke option for either top or bottom supplies. Faucet shall be Kohler Model K-7254-CP. Provide 42 inch stem height.

2.7 SHOWERS (ACCESSIBLE): SH-2

- A. Shower Enclosure: Enclosure is built in.
- B. Trim:
  - 1. Two-handle industrial exposed shower shall be of brass construction. Faucet shall feature brass valve bodies. Faucet shall also feature Velvet valves. Product shall be for 6" (152 mm) centers. Product shall include showerhead, four-arm handles, wall-mount brackets, and reversible yoke option for either top or bottom supplies. Faucet shall be Kohler Model K-7254-CP. Provide 42 inch stem height.

2.8 LAVATORY AND SINK INSULATION KIT

- A. Manufacturers:
  - 1. Substitutions: Section 01 60 00 - Product Requirements.

PLUMBING FIXTURES

2. Product Description: Where Lavatories and sinks are noted to be insulated for ADA compliance, provide the following: Safety Covers conforming to ANSI A177.1 and consisting of insulation kit of molded closed cell vinyl construction, 3/16 inch thick, white or gray color, for insulating tailpiece, P-trap, valves, and supply piping. Furnish with weep hole and angle valve access covers.

PART 3 EXECUTION

3.1 EXAMINATION

- A. Verify that walls and floor finishes are prepared and ready for installation of fixtures.

3.2 PREPARATION

- A. Rough-in fixture piping connections in accordance with minimum sizes indicated in fixture rough-in schedule for particular fixtures.

3.3 INSTALLATION

- A. Install work in accordance with all applicable codes.
- B. Install each fixture with trap, easily removable for servicing and cleaning.
- C. Provide chrome plated rigid supplies to fixtures with screwdriver stops, reducers, and escutcheons.
- D. Install components level and plumb.
- E. Install and secure fixtures in place with wall carriers and bolts.
- F. Seal fixtures to wall and floor surfaces with sealant, color to match fixture.
- G. For ADA accessible water closets, install flush valve with handle to wide side of stall.

3.4 INTERFACE WITH WORK OF OTHER SECTIONS

- A. Review millwork shop drawings. Confirm location and size of fixtures and openings before rough-in and installation.

3.5 ADJUSTING

- A. Adjust stops or valves for intended water flow rate to fixtures without splashing, noise, or overflow.

3.6 PROTECTION

- A. Protect installed products from damage due to subsequent construction operations.

PLUMBING FIXTURES

- B. Do not permit use of fixtures by construction personnel.
- C. Repair or replace damaged products before Date of Substantial Completion.

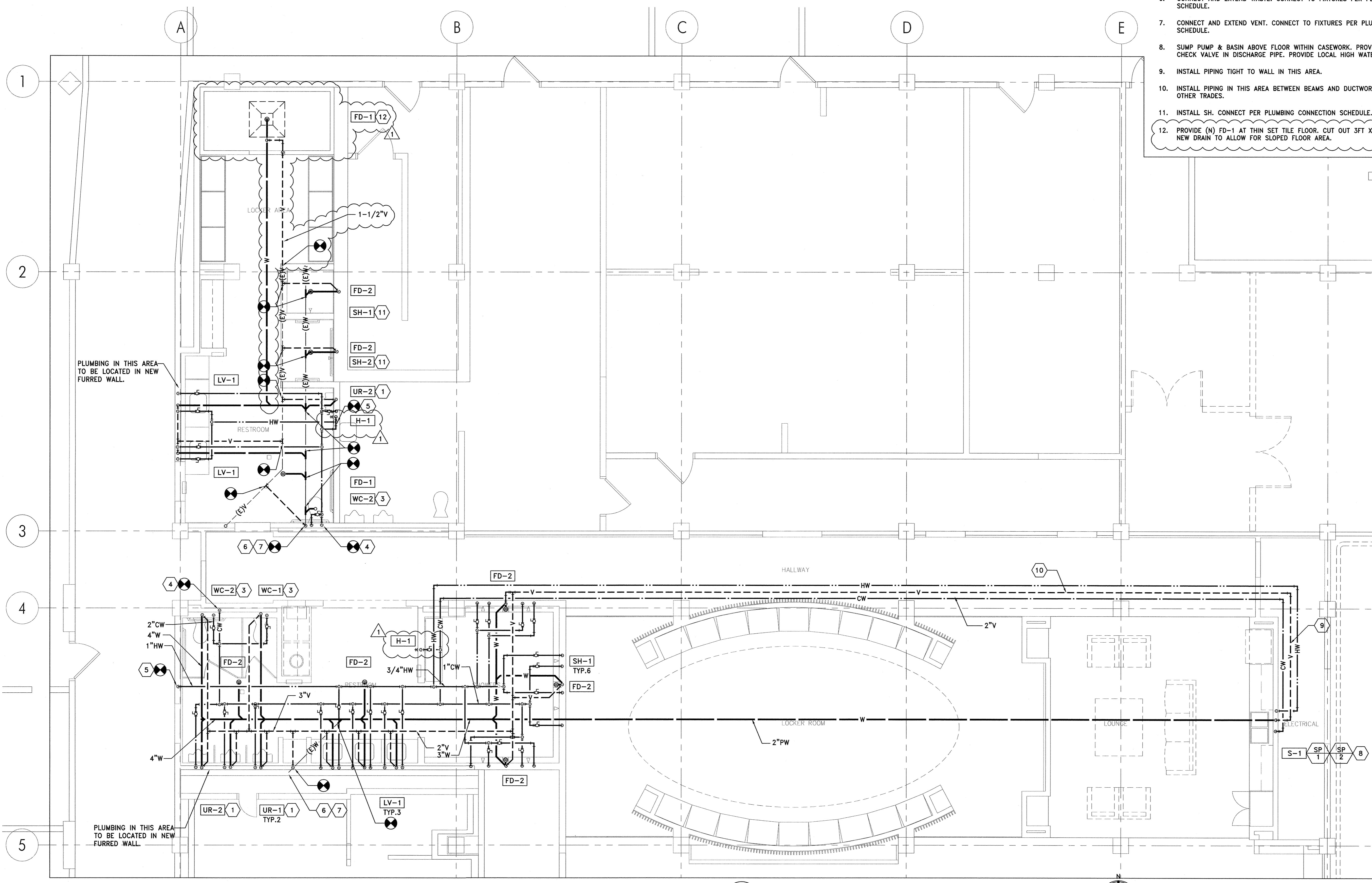
3.7 SCHEDULES

- A. Fixture Heights: Install fixtures to heights above finished floor as indicated.
  - 1. Water Closet:
    - a. Standard: 15 inches to top of bowl rim.
    - b. Accessible: 18 inches to top of seat.
  - 2. Water Closet Flush Valves:
    - a. Standard: 11 inches min. above bowl rim.
    - b. Recessed: 10 inches min. above bowl rim.
  - 3. Lavatory and Sink:
    - a. Standard: 31 inches to top of basin rim.
    - b. Accessible: 34 inches maximum to top of basin rim, or 33 1/2 inches to allow for construction tolerance.
  - 4. Shower Heads:
    - a. Adult Male: 90 inches to bottom of head.
  - 5. Urinal:
    - a. Standard: 22 inches to top of bowl rim.
    - b. Accessible: 17 inches to top of bowl rim.

END OF SECTION 22 40 00

Mark	Description	Date
DATE	04-14-17	
PROJECT NO.		
CAD DWG FILE	4622P1	
DRAWN BY	KP	
CHECKED BY	AC	

- KEYED NOTES:**
1. INSTALL SALVAGED UR. CONNECT PER PLUMBING CONNECTION SCHEDULE.
  2. INSTALL SALVAGED LV. CONNECT PER PLUMBING CONNECTION SCHEDULE.
  3. INSTALL SALVAGED WC. CONNECT PER PLUMBING CONNECTION SCHEDULE.
  4. CONNECT AND EXTEND FROM EXISTING 2" CW. CONNECT TO FIXTURES PER PLUMBING CONNECTION SCHEDULE.
  5. CONNECT AND EXTEND FROM EXISTING HW. CONNECT TO FIXTURES PER PLUMBING CONNECTION SCHEDULE.
  6. CONNECT AND EXTEND WASTE. CONNECT TO FIXTURES PER PLUMBING CONNECTION SCHEDULE.
  7. CONNECT AND EXTEND VENT. CONNECT TO FIXTURES PER PLUMBING CONNECTION SCHEDULE.
  8. SUMP PUMP & BASIN ABOVE FLOOR WITHIN CASEWORK. PROVIDE BALL VALVE & CHECK VALVE IN DISCHARGE PIPE. PROVIDE LOCAL HIGH WATER ALARM.
  9. INSTALL PIPING TIGHT TO WALL IN THIS AREA.
  10. INSTALL PIPING IN THIS AREA BETWEEN BEAMS AND DUCTWORK. COORDINATE WITH OTHER TRADES.
  11. INSTALL SH. CONNECT PER PLUMBING CONNECTION SCHEDULE.
  12. PROVIDE (N) FD-1 AT THIN SET TILE FLOOR. CUT OUT 3FT X 3FT AREA FOR NEW DRAIN TO ALLOW FOR SLOPED FLOOR AREA.



**1** ENLARGED PROPOSED FLOOR PLAN - PLUMBING  
 P1.3 SCALE: 1/4" = 1'-0"  
 0 2' 4' 8'

SUBSTITUTION REQUEST FORM

TO: Brian C. Jackson, Architect/ Stantec

PROJECT: OSU MENS BASKETBALL LOCKER ROOM

SPECIFIED ITEM: TYPE L03, LBL, BA981 Series

PLANS      E0.2   LTG   FXT   SCHED   LED VANITY LIGHT

Section      Page      Paragraph      Description

The undersigned requests consideration of the following:

PROPOSED SUBSTITUTION: ET2, E22392-10PC

Attached data includes product description, specifications, drawings, photographs, performance and test data adequate for evaluation of the request; applicable portions of the data are clearly identified.

Attached data also includes description of changes to Contract Documents which proposed substitution will require for its proper installation.

The undersigned states that the following paragraphs, unless modified on attachments, are correct:

1. The proposed substitution does not affect dimensions shown on Drawings.
2. The undersigned will pay for changes to the building design, including engineering design, detailing and construction costs caused by the requested substitution.
3. The proposed substitution will have no adverse effect on other trades, the construction schedule, or specified warranty requirements.
4. Maintenance and service parts will be locally available for the proposed substitution.

The undersigned further states that the function, appearance and quality of the Proposed Substitution are equivalent or superior to the Specified Item.

Submitted by: David Wray *David Wray*

Signature \_\_\_\_\_

Firm Northern Illumination Co. Inc.

Address 17400 SW Upper Boones Ferry  
Portland, OR 97224

Date 5/24/17

Telephone (503) 226-3633

Attachments: CUT SHEETS

For use by Design Consultant:

Accepted       Accepted as noted

Not Accepted       Received too late

By Brian Jackson

Date 5/30/17

Remarks See Attached Approvals/  
Rejections from Stantec



## Submittal Review

Project: OSU Mens Basketball Locker Room Date: Friday, May 26, 2017

Page: 1 of 1

Architect: Brain Jackson

Contractor:

Reviewed by:

---

**COMPONENTS:**

Structural

Electrical

Mechanical

Other \_\_\_\_\_

---

This review by Stantec is for general conformance with the design concept of Stantec's design of the **above component(s)** only and does not mean that Stantec has verified or approves the shop drawing(s). The Contractor remains solely responsible for the shop drawing(s) and this review by Stantec does not relieve the Contractor of the Contractor's responsibility for errors or omissions in the shop drawing(s) or for meeting all requirements of the contract documents. This review does not mean that Stantec approves the detailed design inherent in the shop drawing, responsibility for which shall remain with the Contractor submitting same, nor does this review mean that Stantec accepts any deviation of the shop drawing(s) from the contract documents. The Contractor is responsible for confirming all dimensions and correlating them at the job site, for all construction means, methods and techniques, and for coordination of construction work of all trades, including coordination of all shop drawings.

---

Substitution for Fixture Type L03	Rejected
Substitution for Fixture Type L04:	No Exceptions Taken
Substitution for Fixture Type L04A	No Exceptions Taken
Substitution for Fixture Type L05	Rejected
Substitution for Fixture Type L09	No Exceptions Taken
Substitution for Fixture Type L10	Rejected
Substitution for Fixture Type L11	No Exceptions Taken

---

REVIEWED

REVISE AND RESUBMIT

REVIEWED AS NOTED

NOT REVIEWED

Date: 26 May 2017 \_\_\_\_\_

By: Mike White \_\_\_\_\_

wm:filename



Northern Illumination Company  
 17400 SW Upper Boones Ferry Road, Suite 270  
 Portland, OR 97224

503-226-3633 503-226-3733 fax

To: Brian C. Jackson, Architect LLC  
 13640 NW Laidlaw Road  
 Portland, OR

### Submittal

Source Quote: 17-0538  
 Entry Date: 5/24/2017  
 Project: OSU MENS BASKETBALL LOCKER ROOM

Original Submittal for Prior Approval  
 1 Copy of Submittals is Attached

Qty	Type	Mfg	Description
<del>Rejected</del>	<del>L03</del>	<del>ET2</del>	<del>E22392-10PC LED VANITY LIGHT</del>
Accepted	L04	Optic Arts	FLEXDC-40-41-24-44-XX / CHW-S/H-3561 OFFERING REMOTE DRIVER. LED TAPE LIGHT W/ CHANNEL
Accepted	L04A	Optic Arts	FLEXDC-40-41-24-22-XX / CHS-C-1919 LED TAPE LIGHT W/ CHANNEL
Accepted	L09	ZANEEN	L30557-35K-CC 35K - 3500K CCT CC - CUSTOM COLOR LED PENDANT
<del>Rejected</del>	<del>L10</del>	<del>Lightfolier</del>	<del>G6SDL20835MZ10UCLW 6" LED CYLINDER</del>
Accepted	L11	Metalumen	RM4DOD-1L35K-MA-W-L4-1-W-4 LINEAR WET LOCATION WALL MOUNT

Remarks:

SUBSTITUTION REQUEST FORM

TO: Brian C. Jackson, Architect/ Stantec

PROJECT: OSU MENS BASKETBALL LOCKER ROOM

SPECIFIED ITEM: TYPE L05, Inter-Lux, E95844 Series

PLANS            E0.2   LTG   FXT   SCHED    2" LED DOWNLIGHT

Section            Page            Paragraph        Description

The undersigned requests consideration of the following:

PROPOSED SUBSTITUTION: Liton, LR2LH21BB-T35

Attached data includes product description, specifications, drawings, photographs, performance and test data adequate for evaluation of the request; applicable portions of the data are clearly identified.

Attached data also includes description of changes to Contract Documents which proposed substitution will require for its proper installation.

The undersigned states that the following paragraphs, unless modified on attachments, are correct:

1. The proposed substitution does not affect dimensions shown on Drawings.
2. The undersigned will pay for changes to the building design, including engineering design, detailing and construction costs caused by the requested substitution.
3. The proposed substitution will have no adverse effect on other trades, the construction schedule, or specified warranty requirements.
4. Maintenance and service parts will be locally available for the proposed substitution.

The undersigned further states that the function, appearance and quality of the Proposed Substitution are equivalent or superior to the Specified Item.

Submitted by: David Wray *David Wray*

Signature \_\_\_\_\_

Firm Northern Illumination Co. Inc.

Address 17400 SW Upper Boones Ferry  
Portland, OR 97224

Date 5/24/17

Telephone (503) 226-3633

Attachments: CUT SHEETS

For use by Design Consultant:

Accepted                       Accepted as noted

Not Accepted                       Received too late

By Brian Jackson

Date 5/30/17

Remarks Profile/diameter too large  
& does not have acceptable  
mounting system.



Northern Illumination Company  
 17400 SW Upper Boones Ferry Road, Suite 270  
 Portland, OR 97224

503-226-3633 503-226-3733 fax

To: Brian C. Jackson, Architect LLC  
 13640 NW Laidlaw Road  
 Portland, OR

**Submittal**

Source Quote: 17-0538  
 Entry Date: 5/24/2017  
 Project: OSU MENS BASKETBALL LOCKER ROOM

Original Submittal for Prior Approval  
 1 Copy of Submittals is Attached

Qty	Type	Mfg	Description
	L05	Liton	LR2LH21BB-T35
<i>Rejected</i>			<del>2" LED DOWNLIGHT</del>

Remarks:

SUBSTITUTION REQUEST FORM

TO: Oregon State University - Procurement, Contracts & Materials Management

PROJECT: OSU Men's Basketball Locker Room Gill Coliseum

SPECIFIED ITEM:

Section	Page	Paragraph	Description
06 40 00 / 06 41 00	<u>2</u>	<u>2.1</u>	<u>Manufacturers</u>

The undersigned requests consideration of the following:

PROPOSED SUBSTITUTION: Add Advance Cabinet Designs Inc as an approved manufacturer.

Attached data includes product description, specifications, drawings, photographs, performance and test data adequate for evaluation of the request; applicable portions of the data are clearly identified.

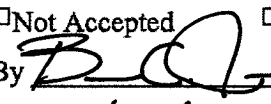
Attached data also includes description of changes to Contract Documents which proposed substitution will require for its proper installation.

The undersigned states that the following paragraphs, unless modified on attachments, are correct:

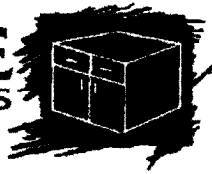
1. The proposed substitution does not affect dimensions shown on Drawings.
2. The undersigned will pay for changes to the building design, including engineering design, detailing and construction costs caused by the requested substitution.
3. The proposed substitution will have no adverse effect on other trades, the construction schedule, or specified warranty requirements.
4. Maintenance and service parts will be locally available for the proposed substitution.

The undersigned further states that the function, appearance and quality of the Proposed Substitution are equivalent or superior to the Specified Item.

Submitted by:   
 Signature \_\_\_\_\_  
 Firm Advance Cabinet Designs, Inc.  
 Address 2555 W. 7th Pl.,  
Eugene, OR 97402  
 Date 05/24/17  
 Telephone 541.465.3394

For use by Design Consultant:  
 Accepted       Accepted as noted  
 Not Accepted       Received too late  
 By  Brian C. Jackson,  
Architect LLC  
 Date 5/25/17  
 Remarks None

Attachments: Substitution Request Letter



May 24<sup>th</sup>, 2017

Oregon State University - PCMM  
644 SW 13<sup>th</sup> Ave.  
Corvallis, OR 97333

Dear Kelly:

We are interested in participating in the "Happy Valley Middle School Addition" project. Since we are not an approved manufacturer per the project specifications, we would like to provide you some information about our company and products in order to become approved.

## **I. History**

In October of 1993, Andy Michaud and Sean Eilers formed Advance Cabinet Designs, Inc. The plant moved to its current location at 2555 West 7th Place in Eugene the following year.

## **II. Product Information**

As a commercial casework shop, Advance Cabinet Designs, Inc. serves architects, contractors and institutions in Oregon and Washington. Advance Cabinet Designs, Inc. has earned a reputation for being responsive and competitive in our market.

We specialize in creating casework and reception area products that offer an option to focus on design and specialty work to deliver aesthetically pleasing product while maintaining functionality. We are repeatedly contracted by our customers for a variety of facility types and environments such as: Hospitals, libraries, medical offices, public service facilities, schools, dental offices, financial institutions, hospitality industries, and other businesses.

Some of our qualifications:

- FSC Chain of Custody Certified.
- AWI Quality Certification Program participant.
- Experience with LEED compliance.

We proudly produce work that meets or exceeds AWI standards.

**III. References – Recent School Projects Advance Cabinet Designs, Inc. has participated in**

**Contractor:** Andersen Construction  
**Project:** OSU Austin Hall – Corvallis, OR  
**Date:** September 2013 – April 2014  
Classroom casework, Computer  
counters, Built-in Benches & Booths,  
Café (LEED)  
**ACD Total:** \$253,793.00

**Contractor:** Wildish Construction  
**Project:** 4J Gilham Elementary School –  
Eugene, OR  
**Date:** April 2016 – October 2016  
Maple/ PLAM classroom casework &  
Tops  
**ACD Total:** \$194,521.00

**Contractor:** Chambers Construction  
**Project:** Pleasant Hill School District –  
Pleasant Hill, OR  
**Date:** June 2015 – July 2016  
Classroom casework, Science Lab  
**ACD Total:** \$368,963.00

**Contractor:** Chambers Construction  
**Project:** River Road Elementary School –  
Eugene, OR  
**Date:** June 2016 - Present  
Classroom Casework  
**ACD Total:** \$511,045.00

**Contractor:** Fortis Construction  
**Project:** OSU Buxton Hawley – Corvallis, OR  
**Date:** July 2016 – November 2016  
Casework, Solid Surfacing, & Wainscot  
**ACD Total:** \$70,792.00

**Contractor:** Chambers Construction  
**Project:** Marist High School – Eugene, OR  
**Date:** August 2015 – May 2016  
Classroom casework, Science lab  
**ACD Total:** \$277,755.00

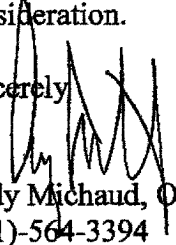
**Contractor:** Hyland Construction  
**Project:** 4J ATA Jefferson Middle School -  
Eugene, OR  
**Date:** April 2016 – Present  
Classroom casework  
**ACD Total:** \$393,950.00

**Contractor:** Fortis Construction  
**Project:** UO Gerlinger AAA – Eugene, OR  
**Date:** August 2016 – Present  
PLAM casework, Millwork, Solid  
Surface Tops, Homosote Panels  
**ACD Total:** \$66,741.00

Our performance on these projects and many others demonstrates our ability to support a broad range of projects. We look forward to the opportunity to work on your project as well.

Please feel free to contact me should you desire more information. Thank you in advance for your consideration.

Sincerely,

  
Andy Michaud, Owner  
(541)-564-3394  
andym@acdcabinets.com



**SUBSTITUTION REQUEST**  
(During the Bidding Phase)

Project: Gill Coliseum Locker Room Substitution Request Number: \_\_\_\_\_  
Brian Jackson, BCJ From: Caleb Dare  
 To: Architects Date: 5/30/17  
 Re: Trespa Phenolic Panel A/E Project Number: \_\_\_\_\_  
 Contract For: \_\_\_\_\_

Specification Title: Custom Cabinets & Lockers Description: Custom Lockers  
 Section: 064100-050517 Page: 4 Article/Paragraph: J3

Proposed Substitution: Stonewood Architectural Panels  
 Manufacturer: Fiberesin Address: 37031 E. Wisconsin Ave. Oconomowoc, WI 53066 Phone: 262-567-4427  
 Trade Name: \_\_\_\_\_ Model No.: \_\_\_\_\_

Attached data includes product description, specifications, drawings, photographs, and performance and test data adequate for evaluation of the request; applicable portions of the data are clearly identified.

Attached data also includes a description of changes to the Contract Documents that the proposed substitution will require for its proper installation.

The Undersigned certifies:

- Proposed substitution has been fully investigated and determined to be equal or superior in all respects to specified product.
- Same warranty will be furnished for proposed substitution as for specified product.
- Same maintenance service and source of replacement parts, as applicable, is available.
- Proposed substitution will have no adverse effect on other trades and will not affect or delay progress schedule.
- Proposed substitution does not affect dimensions and functional clearances.
- Payment will be made for changes to building design, including A/E design, detailing, and construction costs caused by the substitution.

Submitted by: Caleb Dare  
 Signed by: \_\_\_\_\_  
 Firm: Facades Northwest  
 Address: 2730 N Killingsworth St #101, Portland, OR, 97217  
 Telephone: 971-901-7265

A/E's REVIEW AND ACTION

- Substitution approved - Make submittals in accordance with Specification Section 01330.
- Substitution approved as noted - Make submittals in accordance with Specification Section 01330.
- Substitution rejected - Use specified materials.
- Substitution Request received too late - Use specified materials.

Approved as equal to Trespa panels used in the construction of Custom Lockers.  
 B.J.

Signed by: Brian C. Jackson, Architect LLC Date: 5/30/17

Supporting Data Attached:  Drawings  Product Data  Samples  Tests  Reports  \_\_\_\_\_



**1. Product Name**

**Stonewood Interior Architectural Panels**

**2. Manufacturer**

Fiberesin Industries Inc.  
37031 E. Wisconsin Avenue  
PO Box 88  
Oconomowoc, WI 53066  
Phone (262) 567-4427  
Fax (262) 567-4814  
Web Sites: [www.stonewoodpanels.com](http://www.stonewoodpanels.com), [www.fiberesin.com](http://www.fiberesin.com), [www.edgemold.com](http://www.edgemold.com),

**3. Product Description**

**BASIC USE AND APPLICATION**

Stonewood Interior Architectural Panels are used as interior wall panels for commercial applications such as office, medical or educational settings, installed together with clips (reference section 5).

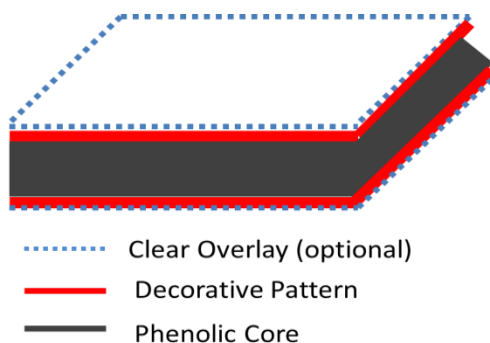
**BENEFITS**

Stonewood Interior Architectural Panels offers the strength and durability of a solid phenolic core as well as excellent durability and moisture resistance. Countless options of decorative patterns/designs are available. UL Class A and Class B fire rated options are available.

**MATERIAL**

Stonewood is manufactured with a core of phenolic resin impregnated kraft paper with a decorative face layer and protective overlay layer impregnated with melamine resin. The layup is compressed at high pressure and temperature. The surface pattern is available in numerous colors and patterns, while the core is standard black or natural brown.

Figure 1 shows schematically the build-up of a typical Stonewood panel.



*Figure 1 – Stonewood composition*

## PANEL DIMENSIONS

Stonewood Interior Architectural Panels are offered in standard 4'x8' sheets, and manufactured in different thicknesses. Standard thicknesses are: 1/8", 3/16", 1/4", 5/16", 3/8", 7/16", 1/2", 3/4", and 1".

## GREEN CHARACTERISTICS

Standard Stonewood is manufactured with fibers extracted from sustainably managed forests and contains at least 16% post-industrial wood fiber content. The Stonewood manufacturing facility has been BIFMA level® certified.

Fiberesin also offers a 100% post-consumer Stonewood product Class B fire rated only).

## 4. Installation

### STORAGE AND HANDLING

- A. Transport materials in manufacturer's original unopened containers/packages, with labels clearly identifying product name, manufacturer, color/texture, and weight.
- B. Always transport and store horizontally.
- C. Store materials in clean, dry area in accordance with manufacturer's instructions.
- D. Normal woodworking or metal working tools are applicable for sawing/drilling.
- E. For best results, use carbide-tipped saw blade and router bits with reduced cutting speed.

### INSTALLATION GUIDELINES

- A. Fiberesin recommends clips from Brooklyn Hardware, LLC ([www.panelclip.com](http://www.panelclip.com))
- B. Three types of clips: Panelclip, Kingclip, and Vclipz (Figure 2)

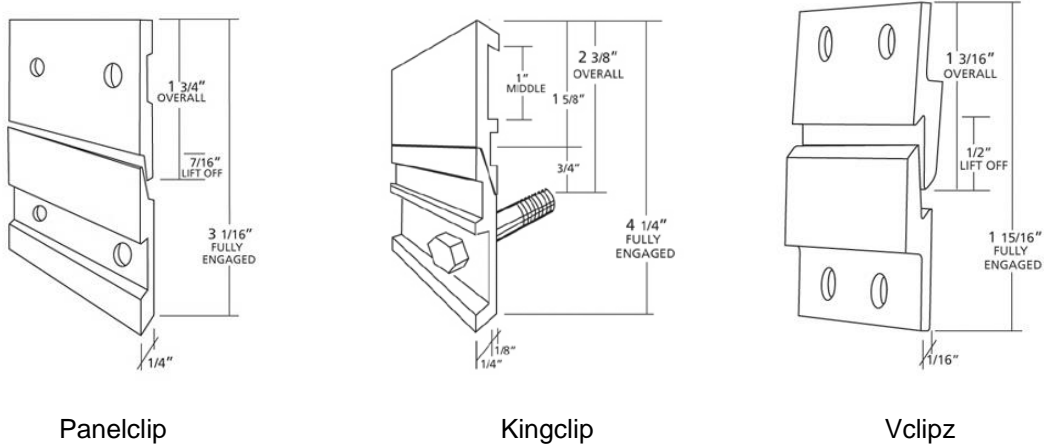


Figure 2 – Clips recommended by Fiberesin



# Make An Impression With a Vast Array of Color Exterior Design Options

**Solids** • Communicate in color. Whether you long for the subtle sophistication of muted greys and creamy whites or the bold dynamism of blacks and blues, our surfaces are available in a breadth of dazzling colors. Do more than just add color, capture a mood.



Not seeing what you want? Call 262-567-4427 or contact your local Stonewood Representative with your design ideas. Our team will guide you through the selection process.

Actual colors may vary from the color on your screen or printed copy. Contact our team to request samples.